

Airtight installation boxes

Less air – more space

Multifix Air

An airtight solution made
even more energy efficient

97%

The new Multifix Air generation
reduces air leakage by up to 97%

Saving energy all the way

Reducing air leakage is becoming increasingly important these days. So is saving time and energy when installing. Fortunately, Multifix Air does all this for you. These boxes are extremely easy to use and help you keep the indoor climate indoors – saving energy for you and your client.

Multifix Air lets you stay ahead



Your choice of installation boxes makes a big difference. When using Multifix Air, the conditioned or heated air will stay indoors instead of leaking out. This means considerably reduced energy costs for the house owner.

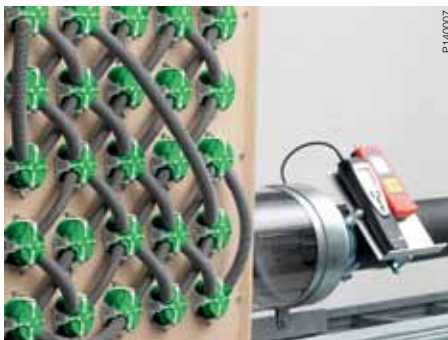
Thoroughly tested

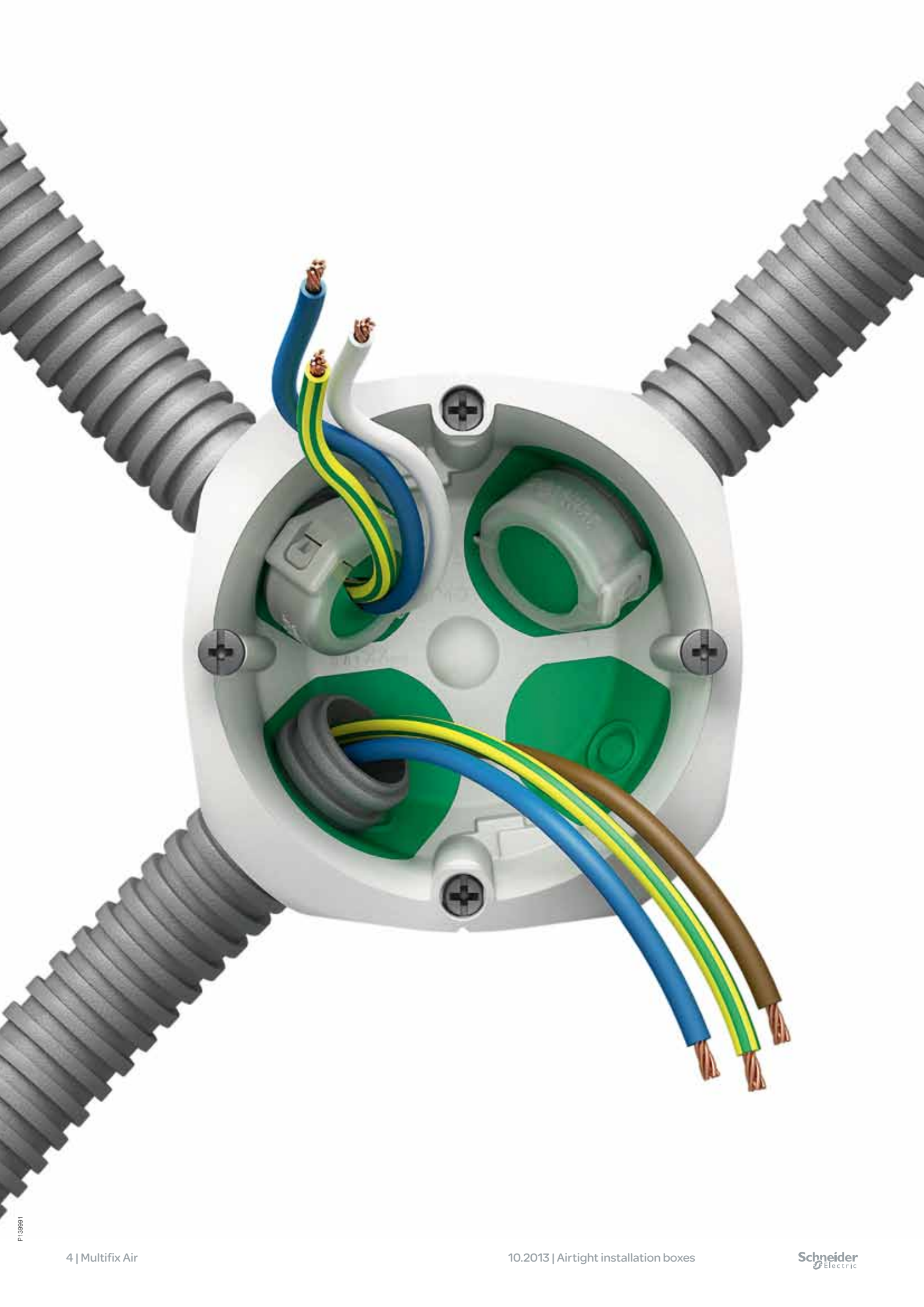
In documented tests, 50 installation boxes with wiring devices were mounted in the test module. The air pressure was measured from 10 to 70 Pascal. A Testo 425 air flow meter, a Greissinger GMH 3160 air pressure meter and an ordinary ventilation fan were used. The results were overwhelmingly in Multifix Air's favour.



Substantially reduced air leakage

Tests with 50 boxes in an air pressure of 50 Pascal showed a total leakage of 118,0 m³/h for standard boxes, as compared to 4 m³/h for Multifix Air. A reduction of air leakage by 97% compared to standard installation boxes.





P139991

Keeping you in the lead

In order to meet your needs, we have fine-tuned a number of Multifix Air functions. For example, we're setting a new market standard with the 47 mm depth, allowing for even more flexibility, work space and technical opportunities. To keep it short: Multifix Air will make your job easier.



The whole Multifix Air range now changes colour design. Look for the green and white products at your store.

Discover our green improvements

Listening to you and your colleagues helps us develop and upgrade our products. Your input has led to a number of improvements in the new Multifix Air generation. The new depth – 47 mm – is already available in single and 4-gang boxes, and 2- and 3-gang boxes will follow. We have also made the collar bigger and the box more rigid, added an improved swivel function with guiding,

toned up the screw quality even more, added some new smart accessories and introduced a 32 ampere version. And of course, the whole range is halogen-free.

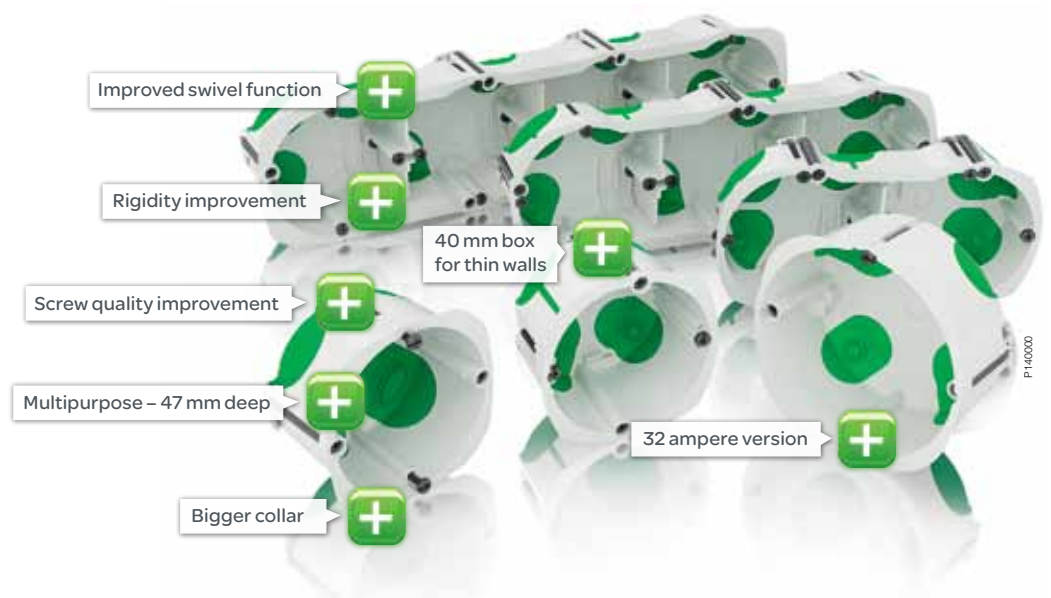
Along with the technical improvements, the Multifix Air range now also comes in a new design. Look for the green and white products at your store.



The whole Multifix Air box range is now halogen-free.



The new 47 mm multi-purpose box is apt for most installations. You will get more done with less different boxes to keep track of.





10.24.08



From now on, you don't have to use anything else

The airtight capacity of Multifix Air comes with a number of installation benefits. Since it's a multipurpose box, it can be used in all parts of the house. It even reduces noise between rooms. Handling the box means less potential trouble, since cables and screws don't risk getting lost in the hollow wall. And you'll have improved possibilities to correct any mistakes, since the box is fully re-useable. Perfect installation, every time. Getting the work done has never been easier.



Multifix Air is both airtight and soundproof – making it the natural choice when noise needs to be reduced between rooms.

One box – two types of installation

The new clever functions of Multifix Air make it perfect for airtight installations in all parts of the house – in both inner and outer walls. These boxes can actually handle up to triple plasterboards. And the new marking template is just one example of the smart accessories helping you make a quick and correct installation.





Less room for air, more workspace for you

Compared to traditional airtight boxes, the extended Multifix Air range gives you more space. The 47 mm depth not only provides enhanced workspace for your hands and cables when installing – it also makes it possible to use space consuming installation technology, like dimmers and other electronic installations. Flexible and time-saving.

Modern technology comes with new conditions. New exciting possibilities, but also increased demands for space. With the large Multifix Air box there's no problem finding room, neither for new technology nor for your hands.

The end cap is another improvement that will make your job easier. It collects all cables in a neat, airtight way and can be used over and over again. Just remember to close the end caps as soon as possible – even before mounting the airtight box – to prevent condensation water from seeping into the conduits during the building process. This is extra important if installing dimmers later on.



The end cap keeps the conduits dry inside during the building process. Make sure to put the end cap on as soon as possible.



The extended Multifix Air depth, 47 mm, makes it optimised for all kinds of installation, in all kinds of walls. No need for different boxes in different parts of the house.



The clever end cap has hinges and can be opened and closed as many times as you wish. It can even be mounted using one hand only. The end cap also helps you ensure proper strain relief for both tubes and cables.

The Multifix Air family.

Airtight solutions for every need.

All Multifix Air boxes are designed to meet the highest demands for energy saving and the requirements of the EN-standards and norms. The elastic membranes fit tightly around the conduits or cables, yet allow a high degree of flexibility, making the installation robust and enduring.

A closer look at the Multifix Air box reveals that every detail has its specific purpose aimed to make your job faster and easier. Metal claws, anti-rotating wings, integrated marking notches, and wide hiding collars help you to achieve a professional end result. And since Multifix Air is a professional range, all the screws are made of robust metal, torque resistant and suitable for power tools.

Easily installed, fully re-usable

The boxes are very easy to handle and as simple to install as to dismount. A dismantled box is fully re-usable, so mistakes are easily corrected. All safety measures are met with features such as the separation wall in double boxes and the good rigidity of the materials used. When successfully installed, the leakage of hot or cold air will definitely stop.



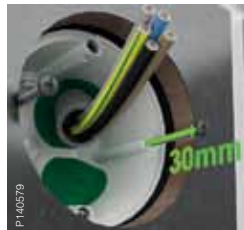
P140000



Flexible but firmly fixed
Thanks to the elastic membranes, each installed conduit or cable is safely fixed in its place, and yet flexible enough to adjust to the wanted position.



Swivel guiding
The swivel construction provides steady guiding and reversability. If you have to correct the installation, you can easily remove the box without damaging the wall, and re-use it again.



All kinds of walls, wiring devices and frames
The long screws make the boxes suitable for any type of wall, regardless of its thickness.



Knock-outs for conduits – no tools are needed
The membranes have knock-outs suitable for a conduit diameter of 16–20 mm or 20–25 mm. No tools are needed, just push the conduit through the membrane.



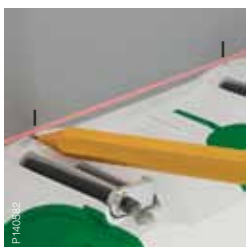
Fast and flexible screws
The screws are “high-speed”, i.e. triple-threaded, making the assembly 3 times faster. Each Phillips-head screw has a built-in stop end to prevent the loss of claws, which makes the box re-usable.



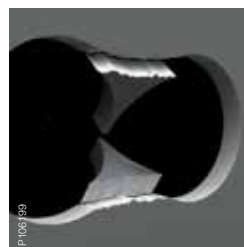
Anti-rotating function
The single boxes have anti-rotating wings that ensures a perfect grip in the wall and prevents unwanted rotation of the box.



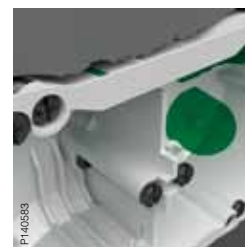
Sturdy and flameproof
All the Multifix Air boxes are flame-proof. This means that they have “survived” the 850°C glow wire test.



Fast and easy
The hole saw makes it easy to centre – just mark a fixing point and drill. You’ll get a perfect hole without rough edges in no time!



Hide imperfections
The wide and thin collar around the box hides any small mistakes in the hole-making. Thanks to its thin construction it will also minimize the gap between the wiring device and the wall. An other convenient help when mounting Multifix Air boxes is to use our dedicated Marking template.

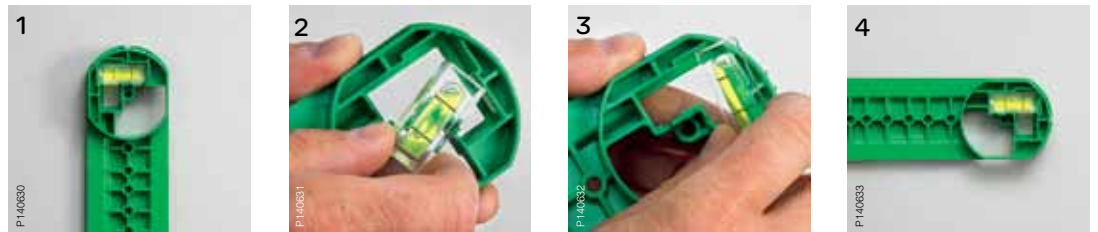


Installation tips

Our aim is to make your job easier and save *your* energy, as well as the building's. That's why we have added a number of new, smart Multifix Air accessories, like the marking template and the patented end cap.



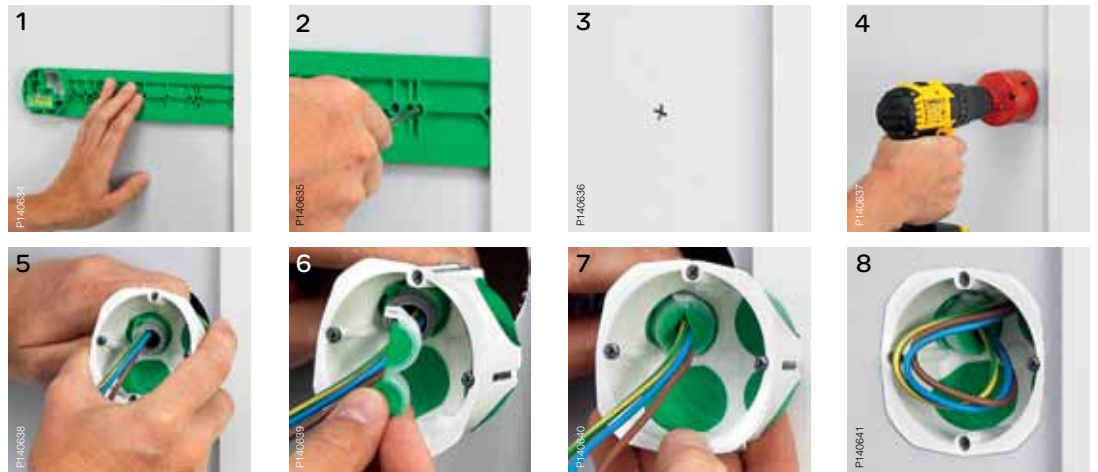
Marking template



The marking template can be used both horizontally and vertically – just move the water level.



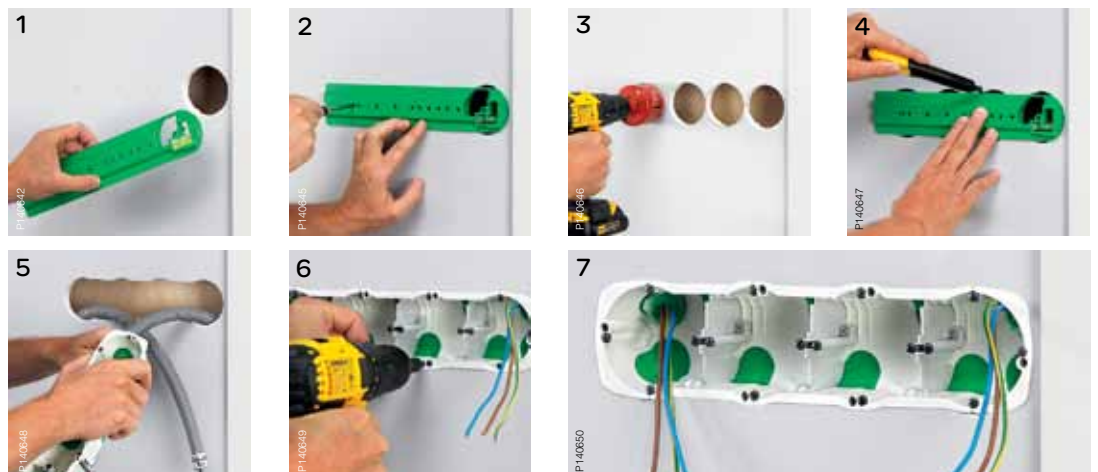
Single box installation



Installation of a single box next to a door with the help of the marking template. The end cap secures the flexible conduit and wires.



4-gang box installation



Installation of a 4-gang box.



Perhaps you have to mount a triple outlet instead of an existing single outlet? No problem. Just lead the existing wires through the marking template before drilling the new holes.

Towards a halogen-free future

The use of halogen-free electrical installation material is a standard in a growing number of countries. Due to regulations regarding fire safety, many installations with parts containing halogen are strictly prohibited. Multifix Air is just one of many halogen-free product ranges from Schneider Electric.

Halogens are chemical elements like fluorine, chlorine, bromine and iodine. In small quantities they are not only harmless but even essential for various chemical processes in the earth crust and in the oceans. But halogens are actually extremely toxic and can cause serious harm to all living organisms.

Reactions in case of fire

When exposed to fire, materials containing halogens release corrosive toxic gases which are severely harmful to people, buildings and even sensitive technical equipment. The gases react with humidity and water, and form highly corrosive acids. Ironically, this means that also the fire-fighting itself is a risk.





We know what we're talking about

Yes, Multifix Air is an impressive device, but it's just one of our many smart products. Schneider Electric is actually the only global specialist providing both strong services and smart solutions to deliver significant savings and optimise total cost of ownership.

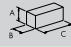





Support, service and backup. We know how crucial these services are to make your daily work easier and more efficient. That's why they are a backbone to our business. Schneider Electric can provide you with everything from single products to complete system solutions. We know what we're talking about.

Our big range of highclass wiring devices is another advantage. Odace wiring device range, lets you keep a coherent design throughout the building. And with the easy-to-use online tool, Mix & Match, we help clients boost their creative abilities – letting their own images enhance their home environment.




Learn more
at mixandmatch.schneider-electric.com



Airtight apparatus boxes							
Type	Colour	Dimensions A/B/C (mm)		Qty per package	EAN code	Ref. No.	
Airtight apparatus box, single							
Single-station apparatus box, 67x40 and 67x47, for mounting at c/c 71 mm. Airtight. Mainly intended for use in hollow outer walls. Material: PP/TPE.							
P106207		67x40 mm	White	71/39/71	50	3606485125299	IMT35001
P139502		67x47 mm	White	71/47/71	40	3606480492211	IMT35032
P139502 P119701		67x47 mm including hole saw Ø68 mm Big-pack	White	71/47/71	240	3606480618703	IMT35231
Airtight apparatus box, single, for 20 and 32A							
Single-station apparatus box 85x47 for 20 and 32 A socket outlets. With extra space for cables. Material: PP/TPE.							
P139504		85x47 mm	White	88/47/84	10	3606480492235	IMT35034
Airtight apparatus box, double							
Double-station apparatus box 67x40 for mounting at c/c 71 mm. Airtight. Mainly intended for use in hollow outer walls. Material: PP/TPE.							
P106206		67x40 mm	White	71/39/142	20	3606485125282	IMT35000
Airtight apparatus box, triple							
Triple-station apparatus box 67x40 mm for mounting at c/c 71 mm. Airtight. Mainly intended for use in hollow outer walls. Material: PP/TPE.							
P119760		67x40 mm	White	71/39/215	10	3606480302787	IMT35031
Airtight apparatus box, four-gang							
Four-gang apparatus box 67x47 mm for mounting at c/c 71 mm. Airtight. Mainly intended for use in hollow outer walls. Material: PP/TPE.							
P139503		67x47 mm	White	71/47/286	5	3606480492228	IMT35033
Airtight wall box kits							
With flush cover							
Wall box kit 67x40 mm including flush cover. Airtight. Material: PP/TPE, ABS.							
P119755		67x40 mm	White	71/39/71	10	3606480302725	IMT35025
With flush cover and lighting plug							
Wall box kit 67x40 mm including flush cover with IPX4 DCL outlet, lighting plug with E27 base and DCL plug 2P E, 6A/250 V AC. Airtight. Material: PP/TPE, ABS, PC/ABS.							
P119756		67x40 mm	White	71/39/71	10	3606480302732	IMT35026
With surface cover							
Wall box kit 67x40 mm including surface cover with IPX4 DCL outlet. Airtight. Material: PP/TPE, ABS, PC/ABS.							
P119759		67x40 mm	White	71/39/71	10	3606480302756	IMT35028
With surface cover and lighting plug							
Wall box kit 67x40 mm including surface cover with IPX4 DCL outlet, lighting plug with E27 base and DCL plug 2P E, 6A/250V AC. Airtight. Material: PP/TPE, ABS, PC/ABS.							
P119757		67x40 mm	White	71/39/71	10	3606480302749	IMT35027
		67x40 mm Big-pack	White	71/47/71	100	3606480619465	IMT35232

Airtight ceiling boxes

Type	Colour	Dimensions A/B/C (mm)		Qty per package	EAN code	Ref. No.
Without cover						
Ceiling DCL box 67x50 mm with pre-mounted suspension chimney. Airtight. Material: PP/TPE, PA6.6.						
P119765	White	71/49/71		10	3606480302718	IMT35024
Kit with flush cover and lighting plug						
Ceiling box kit 67x50 mm including flush cover with IPX4 DCL outlet, pre-mounted suspension chimney, hook, and lighting plug with E27 base and DCL plug 2P E, 6A/250 V AC. Airtight. Material: PP/TPE, PA6.6, ABS, PC/ABS, steel.						
P119762	White	71/49/71		10	3606480302688	IMT35021
Kit with surface cover						
Ceiling box kit 67x50 mm including surface cover with IPX4 DCL outlet, pre-mounted suspension chimney and hook. Airtight. Material: PP/TPE, PA6.6, ABS, PC/ABS, steel.						
P119764	White	71/49/71		10	3606480302695	IMT35022
Kit with surface cover and lighting plug						
Ceiling box kit 67x50 mm including surface cover with IPX4 DCL outlet, pre-mounted suspension chimney, hook, and lighting plug with E27 base and DCL plug 2P E, 6A/250 V AC. Airtight. Material: PP/TPE, PA6.6, ABS, PC/ABS, steel.						
P119763	White	71/49/71		10	3606480302701	IMT35023
	White	71/49/71		100	3606480619472	IMT35233
Ceiling box kit 67x50 mm including surface cover with IPX4 DCL outlet, pre-mounted suspension chimney, hook, lighting plug with E27 base, DCL plug 2P E, 6A/250 V AC and suspension kit. Material: PP/TPE, PA6.6, ABS, PC/ABS, steel.						
P125892	White	71/49/71		10	3606480568237	IMT35229





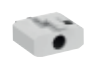






End caps

End caps for flexible conduits						
End cap for flexible conduit, intended for Ø16 mm, Ø20 mm and Ø25 mm respectively. Material: PP + SEBS.						
P138506	For Ø16 mm	Natural	19/21/9	100	3606480492259	IMT35036
	For Ø20 mm	Natural	23/25/9	100	3606480492266	IMT35037
	For Ø25 mm	Natural	28/30/9	100	3606480492273	IMT35038

Compatible accessories

Marking template						
Marking template with an integrated water-level. Suitable for c/c 71 hollow walls. Material: PS.						
P140652	Marking template	Green	61/19/300	1	3606480492327	IMT35043
Blanking plate						
Blanking plate for DCL outlet. Material: PC/ABS.						
P103888	Blanking plate	White	37/11/17	25	3606485048543	ALB71892
Cover for single box						
Cover including screws for single-station box. Material: PS.						
P104047	For 67 mm box	White	67/6.5/67	10	3606485104676	ALB71819

Compatible accessories

Type	Colour	Dimensions A/B/C (mm)	Qty per package	EAN code	Ref. No.
Cover with outlet, for wall/ceiling box					
Surface cover with IPX4 DCL outlet and blanking plate, push-in termination, and two screws. For wall and ceiling box. Material: PC/ABS.					
 P103985	White	25/80/80	25	3606485048284	ALB71817
Cover with outlet, for wall box					
Flush cover with IPX4 DCL outlet and blanking plate. For wall box. Material: ABS, PC/ABS.					
 P119759	White	64/25/64	10	3606480302763	IMT35029
Cover with outlet, for ceiling box					
Flush cover with IPX4 DCL outlet and blanking plate, and hook. For ceiling box. Material: ABS, PC/ABS, steel.					
 P119761	White	96/25/64	10	3606480302770	IMT35030
DCL outlet					
DCL IPX4 outlet with and blanking plate, push-in termination, for mounting in covers for boxes, flush or surface. Material: PC/ABS.					
 P103986	White	36/39/25	25	3606485048345	ALB71800
DCL plug					
DCL plug 2P E, 6A/250 V AC. Material: PC/ABS.					
 P103990	White	36/17/30.5	20	3606485047041	ALB68005
Gripple suspension kit					
Gripple suspension kit intended for ceiling boxes. Material: Steel.					
 P112422	—	68/14/1120	10	3606485048330	ALB71895
Suspension kit					
Suspension kit, intended for ceiling boxes. Material: Steel.					
 P118304	—	∅1.5/1700	25	3606480568244	IMT35230
Hole saw					
Hole saw for board materials, with or without spring, drill diameter 68 mm. Material: Steel, painted.					
 P104023	Red	100/67/68	1	3606485047133	ALB69895
 P119701	Black	100/67/68	1	3606485056753	ALB69892
Lubricant					
Lubricant in a plastic bottle with spout. For pulling cables.					
 P105784	—	265/83/83	1	3606485047904	ALB70900
Mounting screw					
Mounting screw with 5.6 mm screw head, suitable for mounting of Merten wiring devices. Material: Steel, zinc coated.					
 P105925	—	3/32	1 = 100 pcs	3606485104683	ALB71396

* Make the most of your energy

Schneider Electric Industries SAS
35 rue Joseph Monier
92500 Rueil-Malmaison
France
www.schneider-electric.com

As standards, specifications and designs change from time to time, please ask for confirmation of the information given in this publication.



This document has been printed
on ecological paper

Publishing: Schneider Electric Industries SAS
Design: LEON
Illustrations: LEON
Photos: LEON
Printing:

X-ON Electronics

Largest Supplier of Electrical and Electronic Components

Click to view similar products for [Electrical Enclosures](#) category:

Click to view products by [Schneider](#) manufacturer:

Other Similar products are found below :

[MR-25L+](#) [30-8739](#) [30-9715](#) [A242012LP](#) [A16N12BLP](#) [81641001](#) [9511096](#) [9511016](#) [127-906](#) [79021101](#) [73383001](#) [EKIV 17](#) [EKIV 37](#)
[19817001](#) [2327000](#) [2534100](#) [2561400](#) [18600801](#) [19001201](#) [19001301](#) [19501001](#) [19500601](#) [19701101](#) [19600901](#) [TM 0808](#) [TRH 24](#)
[A317SEAL](#) [A3735SEAL](#) [A3783SEAL](#) [G1189G\(BC\)](#) [UV 150 K](#) [UV 250 K](#) [X10 R LGR-TR](#) [X01 UT G LGR](#) [X16C LGR-TR](#) [X25C LGR-](#)
[TR](#) [T 160 OE HD LGR](#) [T 350 OE HD LGR](#) [SDB 03 PS](#) [P2018SEAL](#) [12.0000011](#) [12.0000012](#) [04.3080000](#) [04.3090000](#) [KM-326G](#) [2763-00](#)
[2765-00](#) [20500703-D101000](#) [PK-60/60M ORANGE](#) [IMT35026](#)