

Product availability: Non-Stock - Not normally stocked in distribution facility



### Main

Range of product	Modicon M171
Product or component type	Controller

### Complementary

Number of port	1 Modbus serial link - RS485
Input/output number	2 digital input(s) 4 analog input(s) 2 digital output(s) 8 (total)
Discrete input number	2
Discrete input logic	Sink or source (positive/negative)
Contacts usage	Volt-free contacts
Sensor power supply	5 V DC 12 V DC
Discrete output number	1 open collector 1 SPST
Analogue input number	2 analog input NTC 2 analog input Pt 1000, range: 4...20 mA or 0...5 V or 0...10 V
[Us] rated supply voltage	24 V AC/DC (+/- 10 %)
Display type	Without display
Mounting support	DIN rail
Width	2.76 in (70.2 mm)
Height	3.43 in (87 mm)
Depth	2.43 in (61.6 mm)


### Environment

Marking	CE
Ambient air temperature for operation	23...122 °F (-5...50 °C)
IP degree of protection	IP20

### Ordering and shipping details

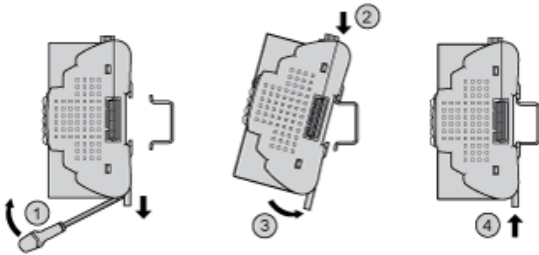
Category	22537 - M171 / M172 HVAC CONTROLLERS
Discount Schedule	PC12
GTIN	003606480752896
Nbr. of units in pkg.	1
Package weight(Lbs)	0.5899999999999997
Returnability	N
Country of origin	IT

## Offer Sustainability

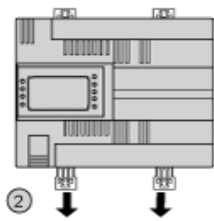
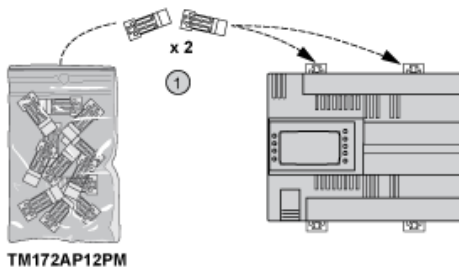
Sustainable offer status	Green Premium product
RoHS (date code: YYWW)	Compliant - since 1429 - Schneider Electric declaration of conformity  Schneider Electric declaration of conformity
REACH	Reference not containing SVHC above the threshold
Product environmental profile	Available
Product end of life instructions	Available
California proposition 65	WARNING: This product can expose you to chemicals including:
----- Substance 1	Lead and lead compounds which is known to the State of California to cause cancer and birth defects or other reproductive harm.
----- More information	For more information go to <a href="http://www.p65warnings.ca.gov">www.p65warnings.ca.gov</a>

Mounting and Clearance

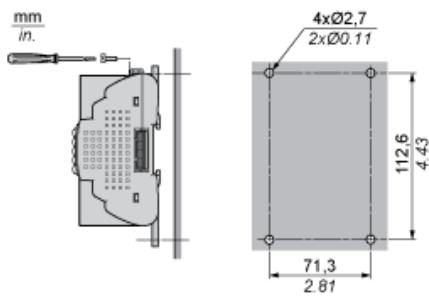
DIN Rail Mounting



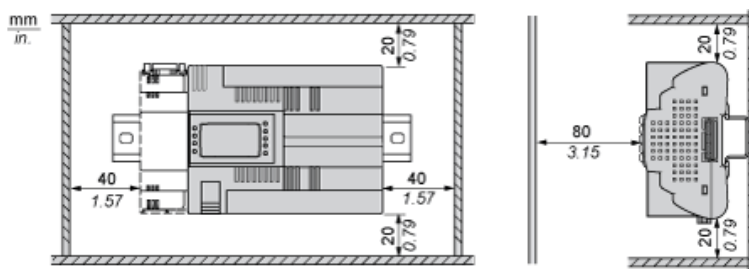
Clips for Panel Mounting



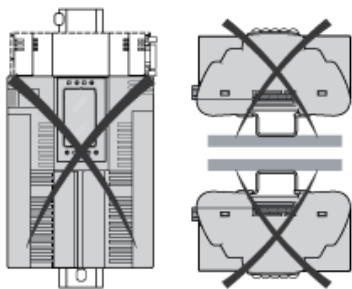
Panel Mounting



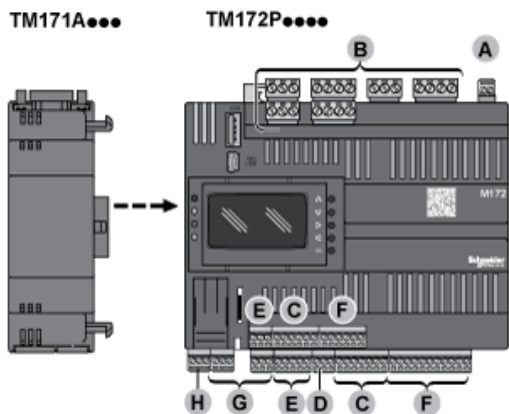
Clearance



## Incorrect Mounting Position



## Assembling a Module



## Wiring Sections and Torque

A, C, D, E, F, G, H

mm in.	0.14...1.5	0.14...1.5	0.25...1.5	0.25...0.5	2 x 0.08...0.5	2 x 0.08...0.75	2 x 0.25...0.34	2 x 0.5
mm <sup>2</sup>	26...16	26...16	22...16	22...20	2 x 28...20	2 x 28...20	2 x 24...22	2 x 20
AWG	26...16	26...16	22...16	22...20	2 x 28...20	2 x 28...20	2 x 24...22	2 x 20

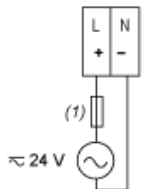
		N·m	0.22...0.25
Ø 2,5 mm (0.1 in.)	C	lb-in	1.95...2.21

B

mm in.	0.2...2.5	0.2...2.5	0.25...2.5	0.25...2.5	2 x 0.2...1	2 x 0.2...1.5	2 x 0.25...1	2 x 0.5...1.5
mm <sup>2</sup>	24...14	24...14	22...14	22...14	2 x 24...18	2 x 24...16	2 x 22...18	2 x 20...16
AWG	24...14	24...14	22...14	22...14	2 x 24...18	2 x 24...16	2 x 22...18	2 x 20...16

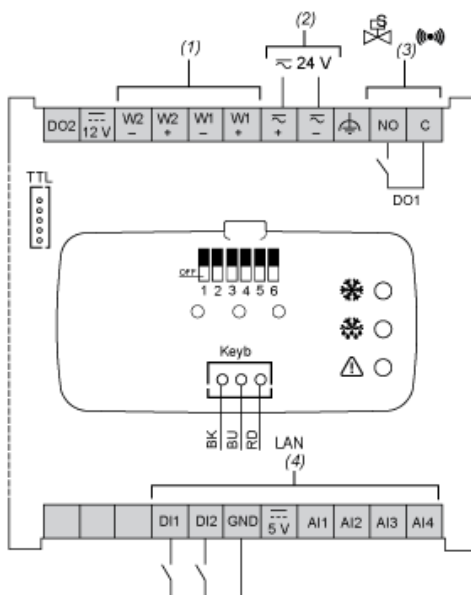
		N·m	0.5...0.6
Ø 3,5 mm (0.14 in.)	C	lb-in	4.42...5.31

Power Supply



(1) Type T fuse 3,15 A

Wiring Diagram



- (1) Electronic Expansion Valve output
- (2) Power supply 24 V ac/dc
- (3) DO1: Relay output 5 A 250 Vac (Solenoid valve/Alarm)  
C: Common - NO: Normally Open
- (4) Analog inputs  
GND - Ground

## X-ON Electronics

Largest Supplier of Electrical and Electronic Components

*Click to view similar products for [Controllers](#) category:*

*Click to view products by [Schneider](#) manufacturer:*

Other Similar products are found below :

[61FGPN8DAC120](#) [CV500SLK21](#) [70177-1011](#) [F03-03 HAS C](#) [F03-31](#) [81550401](#) [FT1A-C12RA-W](#) [88981106](#) [H2CAC24A](#) [H2CRSAC110B](#)  
[R88A-CRGB003CR-E](#) [R88ARR080100S](#) [R88A-TK01K](#) [DCN1-1](#) [DRT2ID08C](#) [DTB4896VRE](#) [DTB9696CVE](#) [DTB9696LVE](#) [E53-AZ01](#)  
[E53E01](#) [E53E8C](#) [E5C4Q40J999FAC120](#) [E5CWLQ1TCAC100240](#) [E5GNQ03PFLKACDC24](#) [B300LKL21](#) [NSCXDC1V3](#) [NSH5-232CW-3M](#)  
[NT20SST122BV1](#) [NV-CN001](#) [OAS-160-N](#) [C40PEDRA](#) [K31S6](#) [K33-L1B](#) [K3MA-F](#) [100-240VAC](#) [K3TX-AD31A](#) [89750101](#) [L595020](#)  
[SRM1-C02](#) [SRS2-1](#) [FT1A-C14SA-S](#) [G32X-V2K](#) [26546803](#) [26546805](#) [PWRA440A](#) [CPM1AETL03CH](#) [CV500SLK11](#) [3G2A5BI081](#)  
[3G2A5IA122](#) [3G2A5LK010E](#) [3G2A5OA223](#)