



Modicon M221

Programmable logic controller for
hardwired architectures



Modicon

Discover [Modicon](#)

Edge control for Industrial IoT

Modicon IIoT-native edge controllers manage complex interfaces across assets and devices or directly into the cloud, with embedded functional safety and cybersecurity. Modicon provides performance and scalability for a wide range of industrial applications up to high-performance multi-axis machines and high-available redundant processes.

Explore our offer

- [Modicon HVAC Controllers](#)
- [Modicon PLC](#)
- [Modicon Motion Controllers](#)
- [Modicon PAC](#)
- [Modicon I/O](#)
- [Modicon Networking](#)
- [Modicon Power Supply](#)
- [Modicon Wiring](#)
- [Modicon Safety](#)

Life Is On



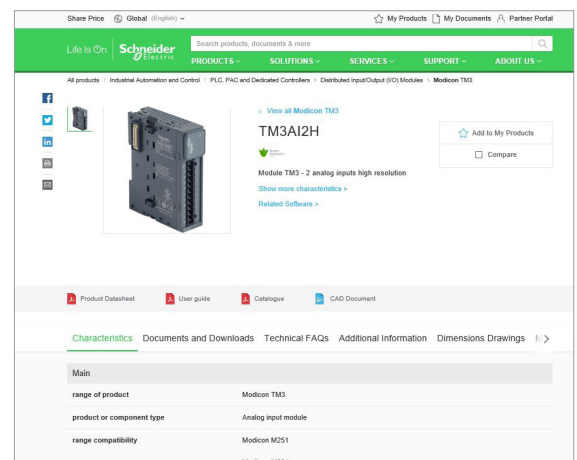
Quick access to product information

Get technical information about your product

References

Modicon TM3
I/O expansion modules for Modicon controllers
Analog I/O modules

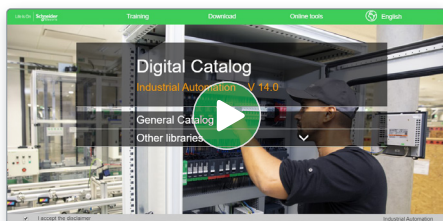
Number and type of channels	Input range	Resolution	Input format (internal (mA))	Reference	Weight (kg)
2 voltage inputs	-15...+15 VDC 0...20 mA r.t. 20 mA	16,000 or 10,000 r.s.g.	0VDC 0VDC	TM3AI2H TM3AI2HG	0.110 0.100
4 voltage inputs	-15...+15 VDC 0...20 mA r.t. 20 mA	12,000 or 10,000 r.s.g.	0VDC 0VDC	TM3AI4 TM3AI4G	0.100 0.100
4 voltage or temperature inputs	-15...+15 VDC 0...20 mA r.t. 20 mA	16,000 or 10,000 r.s.g.	0VDC 0VDC	TM3AI4T TM3AI4TG	0.110 0.100
4 differential temperature inputs	0...100 °C 0...100 °F 0...100 °C 0...100 °F	16,000 or 10,000 r.s.g.	0VDC 0VDC	TM3AI4T TM3AI4TG	0.110 0.100
8 self-diagnosing	-15...+15 VDC	12,000 or 10,000 r.s.g.	0VDC 0VDC	TM3AI8 TM3AI8G	0.100 0.110



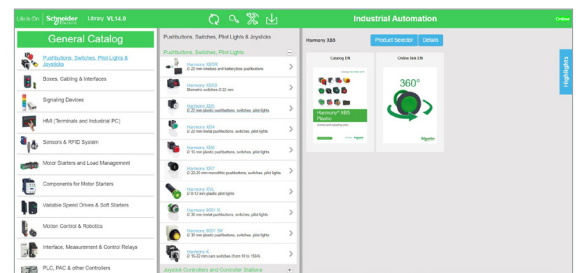
Each commercial reference presented in a catalog contains a hyperlink. Click on it to obtain the technical information of the product:

- Characteristics, Dimensions and drawings, Mounting and clearance, Connections and schemas, Performance curves
- Product image, Instruction sheet, User guide, Product certifications, End of life manual

Find your catalog



- > With just 3 clicks, you can access the Industrial Automation and Control catalogs, in both English and French
- > Consult digital automation catalogs at [Digi-Cat Online](#)

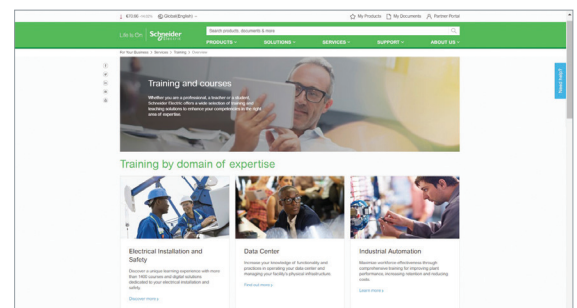


- Up-to-date catalogs
- Embedded product selectors, 360° pictures
- Optimized search by commercial references

Select your training



- > Find the right [Training](#) for your needs on our Global website
- > Locate the training center with the selector tool, using this [link](#)



General content

Modicon™ M221

Programmable logic controller for hardwired architectures

■ Introduction to EcoStruxure Machine	Page 2
■ Controllers for industrial machines	Page 4
■ General presentation	
- Empowering industrial OEMs for the digital era	Page 6
- Modicon M221: the small yet powerful logic controller for hardwired solutions.....	Page 7
- Intuitive machine programming with EcoStruxure™ Machine Expert - Basic	Page 8
■ Selection guide for Modicon™ M221 and Modicon™ M221 Book logic controllers	Pages 10 and 11
■ Presentation	
- Applications, key features.....	Page 12
- Embedded communication, Embedded functions.....	Page 13
- Options: memory card, cartridges.....	Page 13
- Remote graphic display	Pages 14 and 15
- Communication via modem and router	Page 16
- Extended I/O with Modicon TM3 I/O system	Page 17
- Control architecture for standalone machines.....	Page 18
- Communication	Page 19
- Characteristics.....	Page 19
■ Description	
- Modicon M221 logic controllers	Page 20
- TMH2GDB Remote graphic display.....	Page 20
- Modicon M221 Book logic controllers	Page 21
■ References	
- Modicon M221 logic controllers	Page 22
- Modicon M221 Book logic controllers	Page 23
- Remote graphic display, Options	Page 24
- Options, separate parts, software, cordsets.....	Page 25
■ Products reference index	Page 26

To be competitive in today's digital era, machine builders must be innovative. Smart machines, those that are better connected, more flexible, more efficient, and safe, are enabling machine builders to innovate in ways never before possible.

EcoStruxure, Schneider Electric's open, IoT-enabled architecture and platform, offers powerful solutions for the digital era. As part of this, EcoStruxure Machine brings powerful opportunities for machine builders and OEMs, empowering them to offer smart machines and compete in the new, digital era.

EcoStruxure Machine brings together key technologies for product connectivity and edge control on premises, and cloud technologies to provide analytics and digital services. EcoStruxure Machine helps you bring more innovation and added value to your customers throughout the entire machine life cycle.

Innovation at Every Level for Machines is full systems across three layers:

- Connected products
Our connected products for measuring, actuating, device level monitoring, and control adhere to open standards to provide unmatched integration opportunities and flexibility
- Edge Control
We are IIoT-ready with a proven set of tested and validated reference architectures that enable the design of end-to-end open, connected, and interoperable systems based on industry standards. Ethernet and OPC UA facilitates IT/OT convergence meaning machine builders reap benefits from web interfaces and cloud.

- Apps, Analytics & Services
Seamless integration of machines to the IT layer allows the collection and aggregation of data ready for analysis – for machine builders and end users alike this means increased uptime and the ability to find information faster for more efficient operations and maintenance.

These levels are completely integrated from shop floor to top floor. And we have cloud offers and end-to-end cybersecurity wrapped around.

EcoStruxure Machine makes it easier for OEMs/ machine builders to offer their customers smarter machines. The advent of smart machines is driven by the changing needs of end users:

- Evolving workforce
- Reducing costs
- Dynamic markets
- Shorter life cycles
- Prioritizing functional safety and cybersecurity

EcoStruxure Machine provides one solution for the whole machine life cycle:

- With Smart Design & Engineering the time to market is reduced by up to 30% using our automated engineering and the simulation capabilities
- During Commissioning & Operation of the machine, resources such as energy, material and loss can be improved, and with seamless integration to the IT world efficiency can be improved by up to 40%
- Smart Maintenance & Services reduces the time for corrective actions up to 50%

EcoStruxure™ Machine



* The Schneider Electric industrial software business and AVEVA have merged to trade as AVEVA Group plc, a UK listed company. The Schneider Electric and Life is On trademarks are owned by Schneider Electric and are being licensed to AVEVA by Schneider Electric.

Modicon M221

Programmable logic controller for hardwired architectures

Controllers for industrial machines

Applications	Type	Logic controller			Logic / Motion controller	Motion controller
	Specification	For hardwired architectures	For performance-demanding applications	For modular and distributed architectures	IIoT ready for performance machines	For automating machines/lines with 0 - 130 servo or robot axes
						
Memory		640 KB RAM, 2 MB Flash	64 MB RAM, 128 MB Flash	64 MB RAM, 128 MB Flash	192 MB RAM, 256 MB Flash	128 KB to 256 KB NV RAM, 512 MB DDR2 to 1 GB DDR3L
Supply voltage		24 V $\overline{\text{---}}$ or 100...240 V \sim	24 V $\overline{\text{---}}$ or 100...240 V \sim	24 V $\overline{\text{---}}$	24 V $\overline{\text{---}}$	24 V $\overline{\text{---}}$
Communication fieldbus and networks	Embedded	<ul style="list-style-type: none"> EtherNet/IP Adapter Modbus TCP RS 232/RS 485 Serial Line USB mini-B programming port 	<ul style="list-style-type: none"> EtherNet/IP Modbus TCP CANopen (master) and SAE J1939 Serial Line USB mini-B programming port 	<ul style="list-style-type: none"> EtherNet/IP Modbus TCP CANopen (master) and SAE J1939 Serial Line USB mini-B programming port 	<ul style="list-style-type: none"> EtherNet/IP Modbus TCP Sercos III Serial Line USB mini-B programming port 	<ul style="list-style-type: none"> EtherNet/IP Sercos III CANopen Profibus Profinet EtherCAT
	Optional	<ul style="list-style-type: none"> OPC Unified Architecture (OPC UA) 	<ul style="list-style-type: none"> Server 	<ul style="list-style-type: none"> Server 	<ul style="list-style-type: none"> Server (encrypted) Client (encrypted) (depending on reference) 	<ul style="list-style-type: none"> Server (encrypted) Client (encrypted)
		<ul style="list-style-type: none"> 1 Serial Line 	<ul style="list-style-type: none"> Ethernet Profibus DP 	<ul style="list-style-type: none"> Ethernet Profibus DP 	<ul style="list-style-type: none"> Ethernet, EtherNet/IP Adapter CANopen Master 	<ul style="list-style-type: none"> CANopen Profibus DP RT-Ethernet
Embedded I/O	Input types	Up to 40 logic inputs 2 analog inputs	Up to 24 logic inputs	–	4 fast digital inputs	Up to 20 digital inputs Up to 16 touch probe inputs Up to 4 interrupt inputs Up to 2 analog inputs
	Output types	Up to 16 relay outputs Up to 16 transistor outputs	Up to 16 transistor outputs	–	4 fast digital outputs	Up to 16 digital outputs Up to 2 analog outputs
Synchronized axes		–	–	–	Up to 24 synchronized axes	Up to 130 synchronized axes
Configuration software		EcoStruxure Machine Expert-Basic	EcoStruxure Machine Expert			
Compatible expansion I/O module ranges (Consult the catalog)	Local I/O	<ul style="list-style-type: none"> Modicon TM3 (DIA3ED2140109EN) 	<ul style="list-style-type: none"> Modicon TM3 (DIA3ED2140109EN) 	<ul style="list-style-type: none"> Modicon TM3 (DIA3ED2140109EN) 	<ul style="list-style-type: none"> Modicon TM3 (DIA3ED2140109EN) 	–
	Remote I/O	<ul style="list-style-type: none"> Modicon TM3 (DIA3ED2140109EN) 	<ul style="list-style-type: none"> Modicon TM3 (DIA3ED2140109EN) 	<ul style="list-style-type: none"> Modicon TM3 (DIA3ED2140109EN) 	<ul style="list-style-type: none"> Modicon TM3 (DIA3ED2140109EN) 	–
	Distributed I/O on Ethernet	<ul style="list-style-type: none"> Modicon TM3 (DIA3ED2140109EN) 	<ul style="list-style-type: none"> Modicon TM3 (DIA3ED2140109EN) Modicon TM5 (DIA3ED2131204EN) 	<ul style="list-style-type: none"> Modicon TM3 (DIA3ED2140109EN) Modicon TM5 (DIA3ED2131204EN) 	<ul style="list-style-type: none"> Modicon TM3 (DIA3ED2140109EN) Modicon TM5 (DIA3ED2131204EN) 	<ul style="list-style-type: none"> Modicon TM5 (DIA3ED2131204EN)
	Distributed I/O on CANopen	–	<ul style="list-style-type: none"> Modicon TM3 (DIA3ED2140109EN) 	<ul style="list-style-type: none"> Modicon TM3 (DIA3ED2140109EN) 	<ul style="list-style-type: none"> Modicon TM3 (DIA3ED2140109EN) 	<ul style="list-style-type: none"> Modicon TM3 (DIA3ED2140109EN)
	Distributed I/O on Sercos	–	–	–	<ul style="list-style-type: none"> Modicon TM5 (DIA3ED2131204EN) 	<ul style="list-style-type: none"> Modicon TM5 (DIA3ED2131204EN)
	Distributed I/O on Modbus Serial Line	<ul style="list-style-type: none"> Modicon TM3 (DIA3ED2140109EN) 	<ul style="list-style-type: none"> Modicon TM3 (DIA3ED2140109EN) 	<ul style="list-style-type: none"> Modicon TM3 (DIA3ED2140109EN) 	<ul style="list-style-type: none"> Modicon TM3 (DIA3ED2140109EN) 	–
Safety I/O	<ul style="list-style-type: none"> Modicon TM3 (DIA3ED2140109EN) 	<ul style="list-style-type: none"> Modicon TM3 (DIA3ED2140109EN) 	<ul style="list-style-type: none"> Modicon TM3 (DIA3ED2140109EN) 	<ul style="list-style-type: none"> Modicon TM3 (DIA3ED2140109EN) 	<ul style="list-style-type: none"> Safety I/Os are only supported by the Motion variant of M262 Modicon TM3 (DIA3ED2140109EN) Modicon TM5 (DIA3ED2131204EN) Modicon TM7 (DIA3ED2140405EN) 	
Controller range		Modicon M221/M221 Book	Modicon M241	Modicon M251	Modicon M262	PacDrive LMC Eco, LMC Pro2
More details on our website	Consult the catalogs	DIA3ED2140106EN	DIA3ED2140107EN	DIA3ED2140108EN	DIA3ED2180503EN	DIA7ED2160303EN
	Try the configuration tool	<p>Modicon PLC configurator</p>  <ul style="list-style-type: none"> Select your architecture of controller and I/O by Usage and application Connectivity, services and IIOT (Protocols, WeB and communication services) I/O Power supply 				

Modicon M221

Programmable logic controller for hardwired architectures

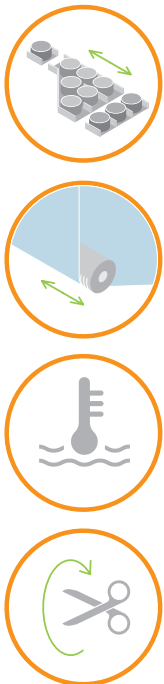
Empowering industrial OEMs for the digital era

To be competitive in today's digital era, machine builders must be innovative. Smart machines, those that are better connected, more flexible, more efficient, and safe, are enabling machine builders to innovate in ways never before possible.

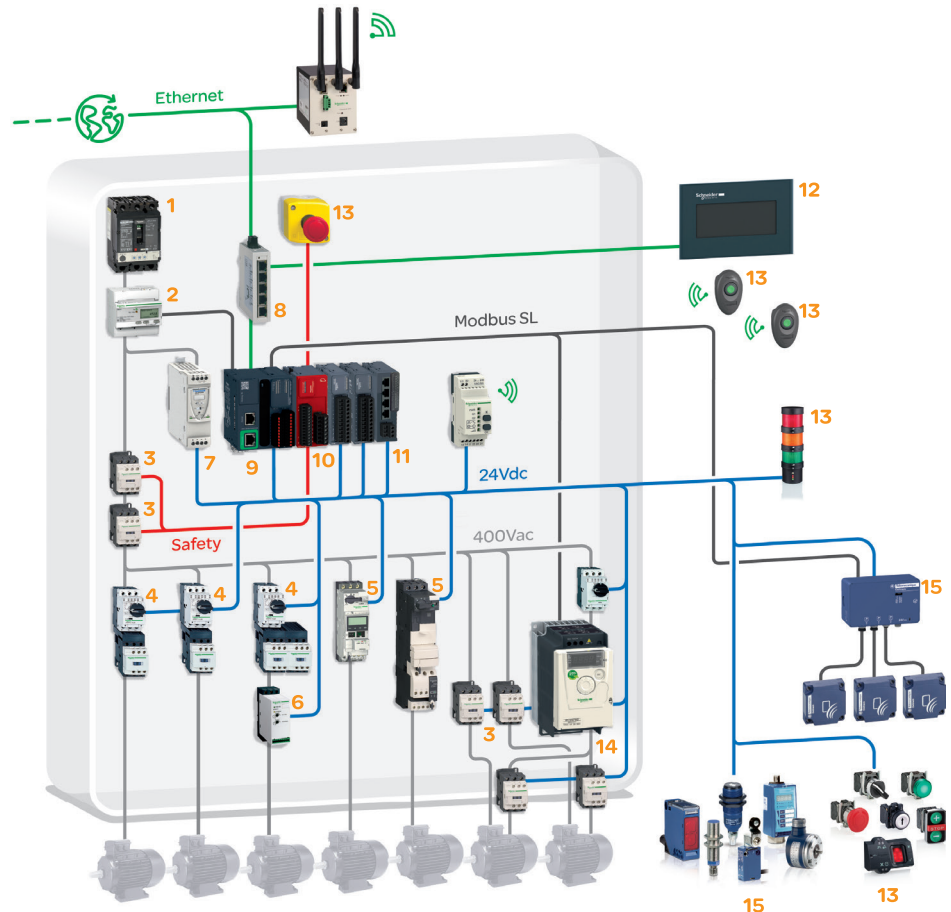
- > EcoStruxure™ Machine, our open, interoperable, IoT-enabled system architecture helps you build smarter machines and equipment faster, making your business more efficient, profitable, and sustainable
- > EcoStruxure Machine brings together key technologies for product connectivity and edge control on premises, and cloud technologies to provide analytics and digital services
- > EcoStruxure Machine helps you bring more innovation and added value to your customers throughout the entire machine life cycle

Ready-to-use architectures and function blocks

Tested, Validated, and Documented Architectures (TVDA) are just one of the ways we help you reduce design time. Whether your machines are simple or complex, Application Function Blocks (AFBs) make system design fast and easy.



Application Function Blocks (AFB)



- | | |
|---|---|
| 1 POWERPACT circuit breaker | 9 Modicon M221 Book logic controller |
| 2 Energy meter Acti 9 iEM3000 | 10 Modicon TM3 functional safety I/O module, digital/analog I/O modules |
| 3 TeSys Deca frame 2 circuit-breaker | 11 Modicon TM3 Parallel interface module |
| 4 TeSys Deca frame 3 circuit-breaker | 12 Harmony HMI |
| 5 TeSys Ultra motor starter | 13 Harmony signalling and control devices |
| 6 Multi9 circuit-breaker | 14 Altivar 312 variable speed drive |
| 7 Modicon power supply 24 V --- | 15 Telemecanique sensors : limit switches and inductive sensors |
| 8 Modicon networking (unmanaged switch) | |

Modicon M221: the small yet powerful logic controller for hardwired solutions

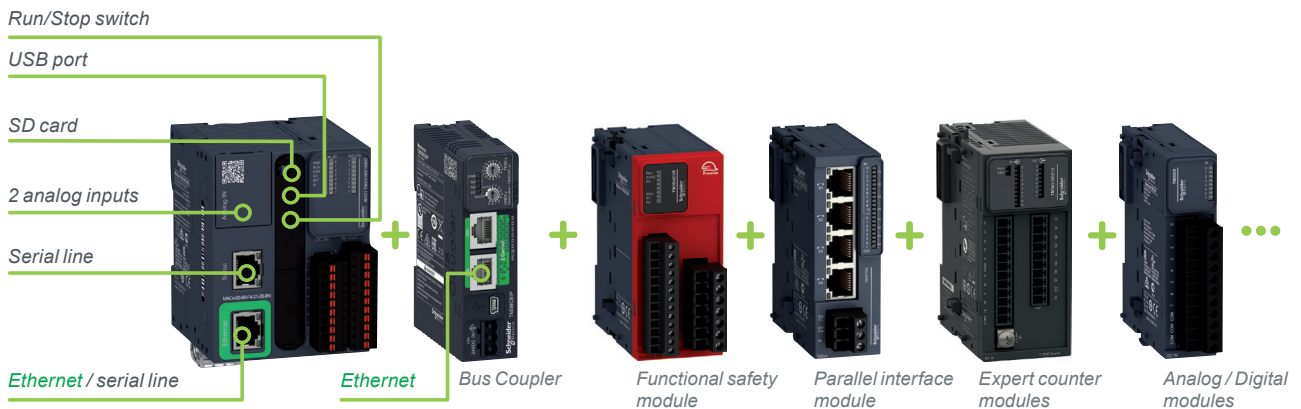
Flexible and scalable machine control

The ranges of Modicon™ controllers provide flexible and scalable machine control. Ethernet connectivity, USB port for programming, and an embedded web server: it's all included.



Everything you need is embedded

The Modicon M221 offers best-in-class performance. Available also in book format, the Modicon M221 requires minimal installation and offers tremendous versatility.



Modicon M221 Book and a broad choice of I/O extension modules

- > SD card, Run/Stop switch, USB port, 2 analog inputs, serial line, Ethernet and serial line, cartridge extension (on standard version): it's all **embedded**.
- > Thanks to its high degree of **flexibility**, it's very easy to add additional modules (safety modules, Counter module, Parallel interface module (4x Tesys motor starters), extensive line of analog and digital modules, ...), and to create distributed I/O islands over Ethernet network, keeping everything in **just one configuration**

Modicon M221

Programmable logic controller for hardwired architectures

Modicon M221: the small yet powerful logic controller for hardwired solutions

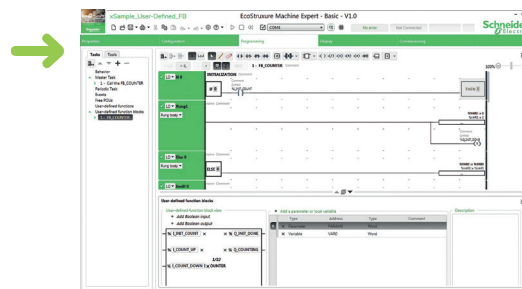
Intuitive machine programming with EcoStruxure Machine Expert - Basic

EcoStruxure Machine Expert - Basic is the universal programming software for machines automated by Modicon M221 logic controllers. Simple navigation that requires only fewer clicks delivers a more efficient engineering process.

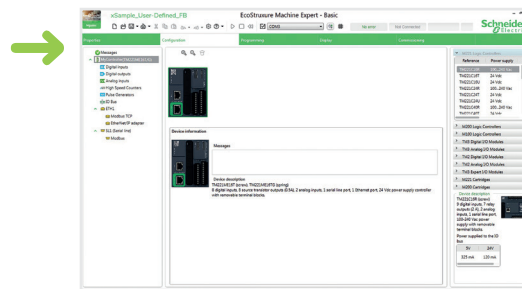
- > All programming, visualization, and commissioning are handled in just one intuitive tool that is available as a free download.
- > No training required



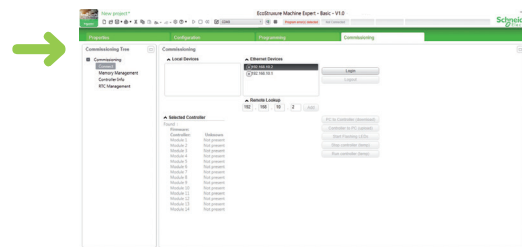
EcoStruxure Machine Expert - Basic simplifies every step in the design and commissioning of your machines



Programming



Configuration



Commissioning

Connected everywhere

For simplified maintenance, commissioning, and uploads/downloads, simply connect anytime, anywhere.

- > Modem and router offer
- > QRcode on the front of the controller

Customization and services

Our experts help you every step of the way, from perfecting machine design to on-site services of the finished machine. Global support, 24/7 hotline services, and replacement parts centers around the world enable you to deliver superior customer support and satisfaction.



Achieve benchmark performance while increasing profitability



Modicon M221

Programmable logic controller for hardwired architectures

Applications

Control of simple machines



Supply voltage

100-240 V ~	24 V ~	24 V ~	100-240 V ~	24 V ~	24 V ~	100-240 V ~	24 V ~	24 V ~	24 V ~	24 V ~	24 V ~
-------------	--------	--------	-------------	--------	--------	-------------	--------	--------	--------	--------	--------

Inputs/outputs	■ Logic inputs/outputs
	□ No. and type of inputs
	□ No. and type of outputs
	□ Connection of the logic I/O
■ Analog inputs	
□ Connection of analog inputs	

16 logic I/O	24 logic I/O	40 logic I/O	16 logic I/O	16 logic I/O	32 logic I/O
9 sink/source 24 V ~ inputs, inc. 4 high-speed inputs	9 sink/source 24 V ~ inputs, inc. 4 high-speed inputs	9 sink/source 24 V ~ inputs, inc. 4 high-speed inputs	14 sink/source 24 V ~ inputs, inc. 4 high-speed inputs	14 sink/source 24 V ~ inputs, inc. 4 high-speed inputs	14 sink/source 24 V ~ inputs, inc. 4 high-speed inputs
7 relay outputs	7 source transistor outputs, inc. 2 high-speed outputs	7 sink transistor outputs, inc. 2 high-speed outputs	10 relay outputs	10 source transistor outputs, inc. 2 high-speed outputs	10 sink transistor outputs, inc. 2 high-speed outputs
On removable screw or spring terminal block			On removable screw or spring terminal block		
2 x 0...10 V analog inputs			2 x 0...10 V analog inputs		
On dedicated removable connector			On dedicated removable connector		

I/O extension Max. number of I/O expansion modules that can be connected /with bus expansion modules

<ul style="list-style-type: none"> □ 7 Modicon TM3 expansion modules, along with limited number of outputs. □ 14 Modicon TM3 expansion modules with the use of bus expansion modules (transmitter and receiver), along with limited number of outputs. □ Possible use of Modicon TM2 expansion modules with restrictions. 	<ul style="list-style-type: none"> □ 7 Modicon TM3 expansion modules, along with limited number of outputs. □ 14 Modicon TM3 expansion modules with the use of bus expansion modules (transmitter and receiver), along with limited number of outputs. □ Possible use of Modicon TM2 expansion modules with restrictions.
--	--

Embedded communication

Ethernet link

Serial link

1 Ethernet port on TM221CE●●● controllers: Modbus TCP communication (client & server), slave Modbus TCP, DHCP Client dynamic configuration, programming, downloading, monitoring, EtherNet/IP adapter	1 Ethernet port on TM221ME●●● controllers: Modbus TCP communication (client & server), slave Modbus TCP, DHCP Client dynamic configuration, programming, downloading, monitoring, EtherNet/IP adapter
1 serial link port (RJ 45 connector) RS 232/RS 485 with + 5 V supply	1 serial link port (RJ 45 connector) RS 232/RS 485 with + 5 V supply 1 additional serial link port on TM221M●●● controllers (RJ 45) RS 485

Embedded functions

Process control

Counting

Position control

PID	PID
Up to 4 high-speed counter inputs (HSC), 100 kHz frequency	Up to 4 high-speed counter inputs (HSC), 100 kHz frequency
Position control (PTO), with trapezoidal profile and S curve able to control either:	Position control (PTO), with trapezoidal profile and S curve able to control either:
<ul style="list-style-type: none"> □ 2 axes in "pulse direction" (P/D) mode □ 1 axis in CW/CCW mode 	<ul style="list-style-type: none"> □ 2 axes in "pulse direction" (P/D) mode □ 1 axis in CW/CCW mode

Format W x H x D

3 controller sizes:	1 size only:
95 x 90 x 70 mm 3.74 x 3.54 x 2.75 in.	70 x 90 x 70 mm 2.75 x 3.54 x 2.75 in.

Options

■ Cartridges

Number of cartridge slots

■ Display unit

<ul style="list-style-type: none"> □ 3 analog I/O expansion cartridges □ 1 additional serial link communication cartridge □ 3 application cartridges <ul style="list-style-type: none"> - for control of hoisting applications - for control of packaging applications - for control of conveying applications 	<ul style="list-style-type: none"> □ 4 axes in "pulse direction" (P/D) mode □ 2 axes in CW/CCW mode
1	2
TMH2GDB remote graphic display: visualization and monitoring	TMH2GDB remote graphic display: visualization and monitoring
Mounting on ┘ symmetrical rail or panel with specific mounting kit TMAM2	Mounting on ┘ symmetrical rail or panel with specific mounting kit TMAM2

Software programming

With EcoStruxure Machine Expert - Basic software	With EcoStruxure Machine Expert - Basic software
--	--

Logic controller type

Controllers without Ethernet port

Controllers with embedded Ethernet port

Modicon M221	Modicon M221 Book																				
<table border="1"> <tr> <td>TM221C16R</td> <td>TM221C16T</td> <td>TM221C16U</td> <td>TM221C24R</td> <td>TM221C24T</td> <td>TM221C24U</td> <td>TM221C40R</td> <td>TM221C40T</td> <td>TM221C40U</td> </tr> <tr> <td>TM221CE16R</td> <td>TM221CE16T</td> <td>TM221CE16U</td> <td>TM221CE24R</td> <td>TM221CE24T</td> <td>TM221CE24U</td> <td>TM221CE40R</td> <td>TM221CE40T</td> <td>TM221CE40U</td> </tr> </table>	TM221C16R	TM221C16T	TM221C16U	TM221C24R	TM221C24T	TM221C24U	TM221C40R	TM221C40T	TM221C40U	TM221CE16R	TM221CE16T	TM221CE16U	TM221CE24R	TM221CE24T	TM221CE24U	TM221CE40R	TM221CE40T	TM221CE40U	TM221M16R	TM221M16T	TM221M32TK
TM221C16R	TM221C16T	TM221C16U	TM221C24R	TM221C24T	TM221C24U	TM221C40R	TM221C40T	TM221C40U													
TM221CE16R	TM221CE16T	TM221CE16U	TM221CE24R	TM221CE24T	TM221CE24U	TM221CE40R	TM221CE40T	TM221CE40U													
	TM221M16RG (1)	TM221M16TG (1)																			
	TM221ME16R	TM221ME16T	TM221ME32TK																		
	TM221ME16RG (1)	TM221ME16TG (1)																			

Pages

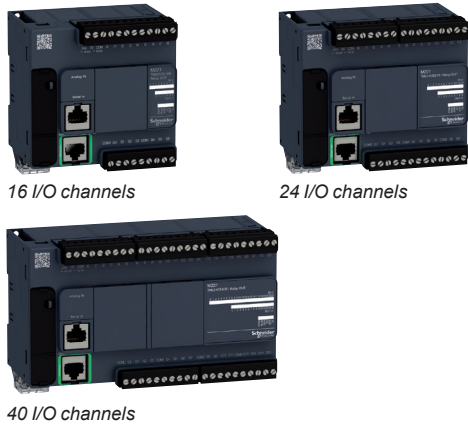
22	23
----	----

(1) Spring terminal block on references ending in the letter G.

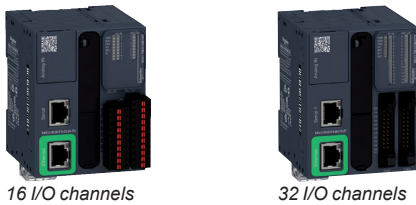
Modicon M221

Programmable logic controller for hardwired architectures

General presentation



Modicon M221 logic controllers (standard format)



Modicon M221 Book logic controllers

Presentation

Applications

Modicon M221 and M221 Book logic controllers are designed for simple machines. They can optimize the size of wall-mounted and floor-standing control system enclosures due to their compact dimensions.

- The controllers are available in 2 formats:
 - Modicon M221 controllers (TM221C●●●● references) offer excellent connection capacity and customization options without increasing the controller size, using I/O, communication, or application cartridges.
 - Modicon M221 Book controllers (TM221M●●●● references) offer very small dimensions and a wide choice of connections.
- M221 and M221 Book controllers have an embedded Ethernet port meaning they can be easily integrated in control system architectures, for remote control and maintenance of machines using applications for smartphones, tablets, and PCs.
- The wealth of functions embedded in M221 and M221 Book controllers minimizes the cost of the machine:
 - Functions embedded in the controller: Modbus serial link, USB port dedicated to programming, and simple position control functions (high speed counters and pulse train outputs trapezoidal and S-curve profile)
 - Functions embedded in Modicon TM3 extensions: functional safety modules, motor-starter control module, and remote expansion system
 - Functions embedded in the dedicated display unit
- The application is created quickly thanks to the intuitive nature of the EcoStruxure Machine Expert - Basic programming software, which also has embedded configuration of the display unit and extensions, including the functional safety modules.

Main functions

Modicon TM221C●●●	Modicon TM221M●●● (Book format)
w x h x d (mm/in.)	
<ul style="list-style-type: none"> □ 16 I/O: 95 x 90 x 70 / 3.74 x 3.54 x 2.75 □ 24 I/O: 110 x 90 x 70 / 4.33 x 3.54 x 2.75 □ 40 I/O: 163 x 90 x 70 / 6.41 x 3.54 x 2.75 	<ul style="list-style-type: none"> □ 16 I/O: 70 x 90 x 70 / 2.75 x 3.54 x 2.75 □ 32 I/O: 70 x 90 x 70 / 2.75 x 3.54 x 2.75
Supply voltage	
24 V $\overline{\text{---}}$ or 100..240 V \sim 50/60 Hz	24 V $\overline{\text{---}}$
Connection of the embedded I/O	
On removable screw or spring terminal blocks at intervals of 5.08 mm (0.20 in.) 24 V/0.25 A power supply provided by the controller for sensor inputs on TM221C●●R models	16 I/O: On removable screw or spring terminal blocks at intervals of 3.81 mm (0.15 in.) 32 I/O: On HE10 connectors with HE 10 cables/bare wires or Modicon ABE7 Telefast connection sub-bases (1)
Analog inputs	
2 embedded inputs on each TM221M●●● and TM221C●●● controller	
Embedded Ethernet communication	
Yes on TM221CE●●	Yes on TM221ME●●
Serial link	
1 embedded link	1 or 2 embedded links
Cartridges	
1 slot for 1 or 2 cartridges: <ul style="list-style-type: none"> □ I/O cartridge (analog inputs or outputs, temperature inputs) □ communication cartridge (serial link) or application cartridges (hoisting, conveying, and packaging) 	–

Hardware characteristics

M221 and M221 Book controllers each have an embedded:

- Run/Stop switch
- slot for an industrial SD memory card
- QR code for direct access to its technical documentation

(1) Modicon ABE7 Telefast pre-wired system to be ordered separately. Refer to the catalog ref. [DIA3ED2160602EN](#) or our website www.schneider-electric.com

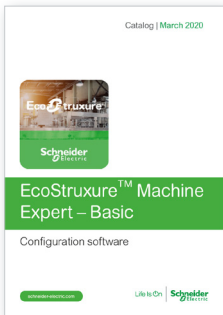
Modicon M221

Programmable logic controller for hardwired architectures

General presentation, options



EcoStruxure Machine Expert - Basic software



Please consult catalog Ref. [DIA3ED2181201EN](#)

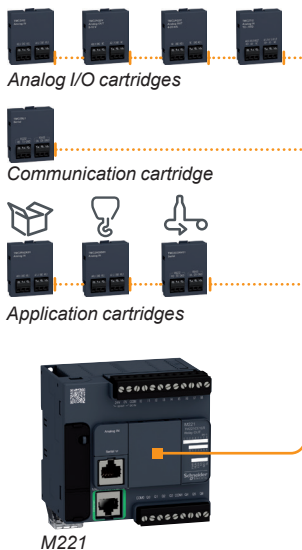
TMASD1 industrial SD memory card



M221



M221 Book



Presentation

Embedded communication

M221 and M221 Book logic controllers have three types of integrated communication port:

- Ethernet
- RS 232/RS 485 serial link
- USB mini-B programming port

Embedded functions

Each Modicon M221 and M221 Book logic controller has the following integrated functions:

- Analog (PID control)
 - Counting: Up to 4 high speed counters (HSC), 100 kHz frequency
- Controllers with transistor logic outputs (source or sink) are equipped with 2 or 4 high speed counters (1) supporting pulse generation functions.
- Position control (PTO), with trapezoidal and S-curve profile able to control either:
 - 2 or 4 axes in pulse direction (P/D) mode
 - 1 or 2 axes in CW/CCW mode
- These outputs can be associated with event-triggered inputs to feed back homing and capture information. A "Motiontask" function block (one per axis) associated with a command table can be used to program and preview intuitively all the movements of an axis in the EcoStruxure Machine Expert - Basic software.
- Pulse width modulation (PWM)
 - Pulse generator (PLS)
 - Frequency generator (FREQGEN)

Processing power

- Execution speed: 0.2 μs/Boolean instruction
- Program: 10 Boolean Kinstructions
- Number of words: 8,000. Number of internal bits: 1,024
- RAM: 640 K (256 K for internal variables and 256 K for application and client data)
- Flash memory: 2 MB (including 256 K for backing up the client application and data in the event of a power outage)

Programming

Modicon M221 and M221 Book logic controllers are programmed using EcoStruxure Machine Expert - Basic software downloadable from our website www.schneider-electric.com

Options

Memory card

The **TMASD1** industrial SD memory card, with 256 MB capacity, is available for Modicon M221 and M221 Book logic controllers. It is used for:

- backing up and transferring applications
- loading firmware
- duplicating applications between controllers
- data logging

Cartridges

One or two cartridges can be inserted on the front of TM221C●●● controllers without increasing the dimensions.

Three types of cartridge are offered:

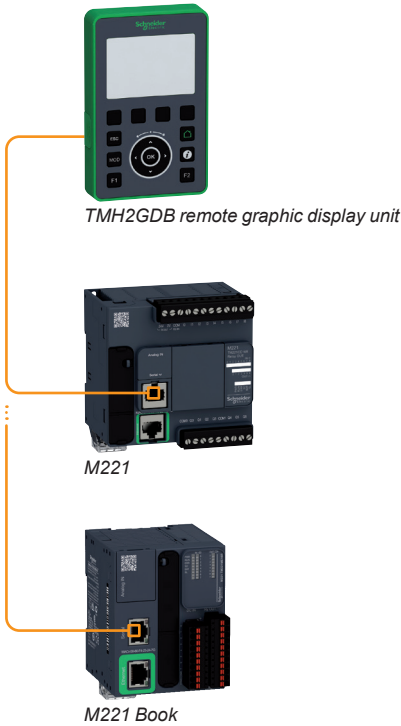
- Analog I/O cartridges
 - **TMC2AI2** for 2 analog inputs, which can be configured as voltage or current
 - **TMC2AQ2V** for 2 voltage analog outputs
 - **TMC2AQ2C** for 2 current analog outputs
 - **TMC2TI2** for 2 temperature inputs
 - Communication cartridge
 - **TMC2SL1** providing additional serial link port terminals for connection via a printer, barcode reader, etc.
 - Application cartridges
 - **TMC2HOIS01** for hoisting applications with two dedicated analog inputs for controlling a load cell
 - **TMC2PACK01** for packaging applications with two dedicated analog inputs for controlling the temperature on a packaging machine
 - **TMC2CONV01** for conveyor system applications with a serial link
- Use of an application cartridge provides direct access to application examples via the EcoStruxure Machine Expert - Basic software.

(1) 4 high-speed outputs on TM221C●40U, 2 high-speed outputs on TM221●●16T, TM221C●24T, TM221C●40T, TM221C●16U, TM221C●24U.

Modicon M221

Programmable logic controller for hardwired architectures

Remote graphic display unit for Modicon M221 and M221 Book logic controllers



Remote graphic display unit

Presentation

The **TMH2GDB** remote graphic display unit is an HMI dedicated to M221 and M221 Book logic controllers. It is mounted on the front panel of a wall-mounted or floor-standing enclosure (degree of protection IP 65) or, using mounting brackets, at the back of an enclosure on a panel or symmetrical rail.

The **TMH2GDB** display unit is ready to use: the main application parameters can be accessed, with no prior programming, as soon as it is connected to the logic controller. Customized dialog pages can, however, be easily created using predefined templates in the EcoStruxure Machine Expert - Basic software dedicated to Modicon M221 and M221 Book logic controllers.

The **TMH2GDB** remote graphic display unit is a multifunction display unit that runs alongside your machine throughout its life cycle:

- During debugging: reading the states and values of variables and providing complete diagnostics of the controller configuration
- During installation: options for setting the time and configuring the communication ports
- During runtime: an operator interface created in the EcoStruxure Machine Expert - Basic software can be used to (for example):
 - display information in the form of text, values, bargraphs, or gages
 - perform machine control actions
 - enter or modify data
 - customize buttons on the front panel
- During maintenance: the page displaying alarm messages is permanently accessible by pressing a single key. Alarm messages are stored and time-tagged in a page of the log. An icon, which is always visible, flags up the presence of at least one alarm message. Access to each page and modification of its values can be protected by a password.

Main characteristics

- Backlit monochrome STN LCD 60 x 40 mm (2.36 x 1.57 in.)
- 5 lines of 20 to 35 characters, depending on the type of page
- Title block at the top of the page
- Title block at the bottom of the page
- 10 languages available: English, French, Czech, German, Italian, Japanese, Portuguese, Simplified Chinese, Spanish, and Turkish
- Up to 4 customizable service keys
- 100 HMI pages maximum
- Dimensions on the front panel of the machine (w x h x d): 80 x 126 x 19.2 mm (3.15 x 4.96 x 0.75 in)

Conformity

- CE, cULus Listing Mark

Environmental characteristics

- Ambient operating temperature: -15...+ 50 °C (5...122 °F)

Power supply characteristics

- 5 V $\overline{\text{DC}}$ (200 mA) supplied directly by the controller
- Max. consumption: 1 W

Modicon M221

Programmable logic controller for hardwired architectures

Remote graphic display unit for Modicon M221 and M221 Book logic controllers

Remote graphic display unit (continued)

Installation and setup

The **TMH2GDB** remote graphic display unit is mounted in a 22 mm (0.87 in.) diameter hole and is connected to the SL or SL1 serial link on Modicon M221 and M221 Book logic controllers with the **XBTZ9980** and **VW3A1104R10** cable, which also supplies it with power (no other Modbus slave equipment must be connected on this link) (1).

The debug screens, including those for setting the time and configuring the communication ports, are already configured and available as soon as the display unit is connected to the logic controller (2).

The HMI (runtime) pages and alarm pages are created and configured very easily in the EcoStruxure Machine Expert - Basic programming software, from predefined pages:

- "Alarm display" template
- "Menu" template
- "Monitoring" template
- "Control panel" template
- "Bargraph" template (1 or 2 bars)
- "Gage" template

These pages constitute part of the controller application. They are transferred to and stored in the M221 and M221 Book logic controller memory, no transfer is necessary between the PC and the **TMH2GDB** graphic display unit. The latter is operational as soon as it is connected to the serial port on the logic controller.

The Home page can be selected by programming. Each HMI and alarm page can be displayed by navigating the front panel using the keys or called by a program. Alarm pages can also be displayed on a red background.

The HMI pages can be created in several languages, the language displayed on the graphic display unit can then be selected by the operator in the display configuration menu.

(1) Neither the serial link on the TMC2SL1 cartridge, nor the SL2 embedded serial link, can be used to connect the graphic display unit.

(2) When the controller has no application program, only the product reference and the controller firmware version are accessible. The controller firmware version must be V1.3 or later.

Controller Info		10/02/2012 02:57:11
Device name	TM221CE24T	
Firmware version	0.3.9.1	
Last MAST cycle	0,134 ms	
Min. MAST cycle	0,134 ms	
Max. MAST cycle	0,159 ms	
Alarm		Back

Debugging: Controller information

Ethernet		10/02/2012 02:57:47
IP Mode	0	
IP address	85.21.1.24	
Mask	255.255.255.0	
Gateway	0.0.0.0	
Device name	M221	
Apply	Edit	Refresh
		Cancel

Debugging: Configuring communication

Alarm	Monitoring	26/11/2014 10:38:24
Temperature 1	23	
Temperature 2	24	
Heating	1	
Cooling	0	
Auto/Manu	1	
Edit	Alarm	menu
		Alarm

HMI: Monitoring

Alarm	Controls	26/11/2014 10:38:40
Auto mode status		
Auto mode selected		
Oven is heating		
Cooling system is OFF		
On	Off	Menu
		Alarm

HMI: Control panel

WATER SUPPLY		14/09/2015 23:26:13
3	m	
0 10		
9	m ³	
0 10		
Edit1	Edit2	Alarm
		Home

HMI: Bargraph

Temperature		10/02/2012 02:58:14
20	25	30
----- ----- -----		
22		°C
Alarm	menu	set

HMI: Gage

Alarm	Alarm History	17/09/2015 07:44:18
TANK EMPTY	17/09/2015 07:43:55	
Conveyor blocked	17/09/2015 07:43:38	
LOW BATTERY	17/09/2015 07:41:37	
TANK EMPTY	17/09/2015 07:41:00	
Alarm	Delete	Back

HMI: Alarm display

Examples of screens

Modicon M221

Programmable logic controller for hardwired architectures

Communication via modem and router

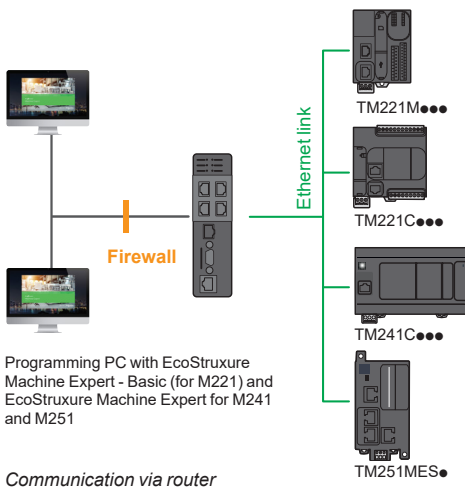
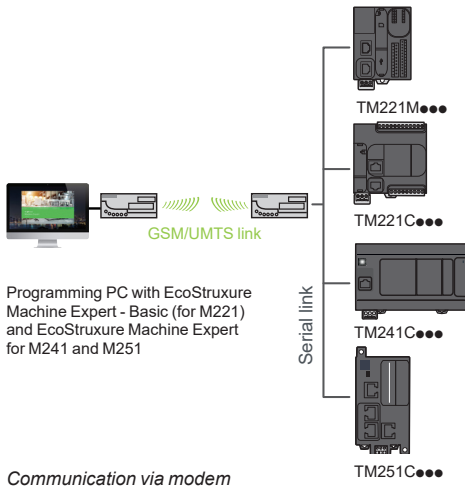
Communication via modem and router

The communication via modem and router offer is dedicated to the following applications:

- Synchronization between remote machines; direct data exchange between controllers
- Remote maintenance; access to the controller via the EcoStruxure Machine Expert - Basic programming software
- Remote control and monitoring of machines; receipt of information and sending commands on GSM/UMTS phone (1)

This offer comprises a **Schneider Electric** modem, a GSM/UMTS modem, and an **eWon** VPN router.

(1) Global System Mobile (2G)/Universal Mobile Telecommunications System (3G)

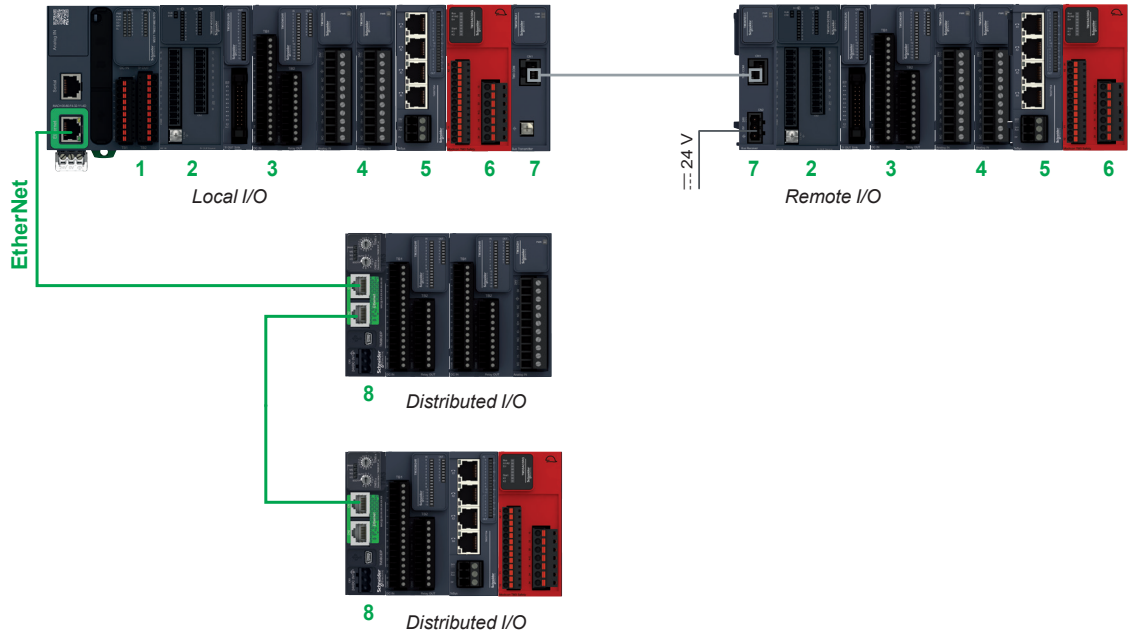


Modicon M221

Programmable logic controller for hardwired architectures

I/O extensions with Modicon TM3 I/O system

I/O extensions with Modicon TM3 I/O system



1 Modicon M221 Logic controller (TM221CE●● or TM221ME●●)

Modicon TM3 I/O system (2...8)

- 2 TM3 Expert counter module
- 3 TM3 Digital I/O module
- 4 TM3 Analog I/O module
- 5 TM3 Parallel interface module for controlling TeSys motor starters
- 6 TM3 Functional safety module
- 7 TM3 Bus expansion module (transmitter and receiver) and bus expansion cable
- 8 TM3 Bus Coupler (2x bus couplers are allowed)

Modicon TM3 expansion modules

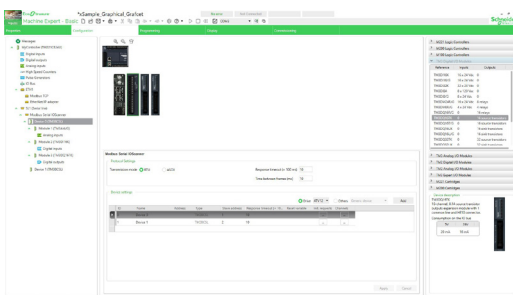
- The capacity of M221 and M221 Book logic controllers can be enhanced with the Modicon TM3 expansion module offer (1):
 - Digital I/O modules that can be used to create configurations with up to 488 digital I/O. These modules are available with the same connections as the controllers.
 - Analog I/O modules that can be used to create configurations with up to 114 analog I/O and are designed to receive, amongst other things, position, temperature, and speed sensor signals. They are also capable of controlling variable speed drives or any other device equipped with a current or voltage input.
 - Expert modules for high-speed counting (24 V $\bar{\text{---}}$ inputs), and event counting with or without event management on fast inputs/thresholds/stop.
 - Expert module: Parallel interface module to control up to 4 TeSys motor-starters, connected with RJ 45 cables to simplify wiring up the control section.
 - Functional safety modules that simplify wiring and can be configured in the EcoStruxure Machine Expert - Basic software (2).

Modicon TM3 Bus coupler

- M221 controller allows to connect up to 2x Modicon TM3 Bus Couplers on serial communication or on an Ethernet (Modbus/TCP) communication. The configuration is done thanks to Ecostruxure Machine Expert - Basic software. The TM3 bus port located on the right-hand side of the Modicon M221 controller allows connection of any of the TM3 expansion modules for local, remote, or distributed I/O configurations:
 - Local I/O: 7x Modicon TM3 expansion modules (max. configuration)
 - Remote I/O: + 7x remote modules (equals 14x TM3 modules: 7x local + 7x remote)
 - Distributed I/O: up to 2x TM3 Bus Couplers, allowing 3x TM3 I/O modules by Bus Coupler

(1) Please consult catalog Ref. [DIA3ED2140109EN](#)

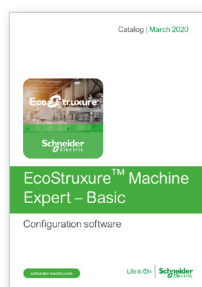
(2) Please consult catalog Ref. [DIA3ED2180701EN](#)



Bus couplers configuration



[DIA3ED2140109EN](#)



[DIA3ED2180701EN](#)

Modicon M221

Programmable logic controller for hardwired architectures

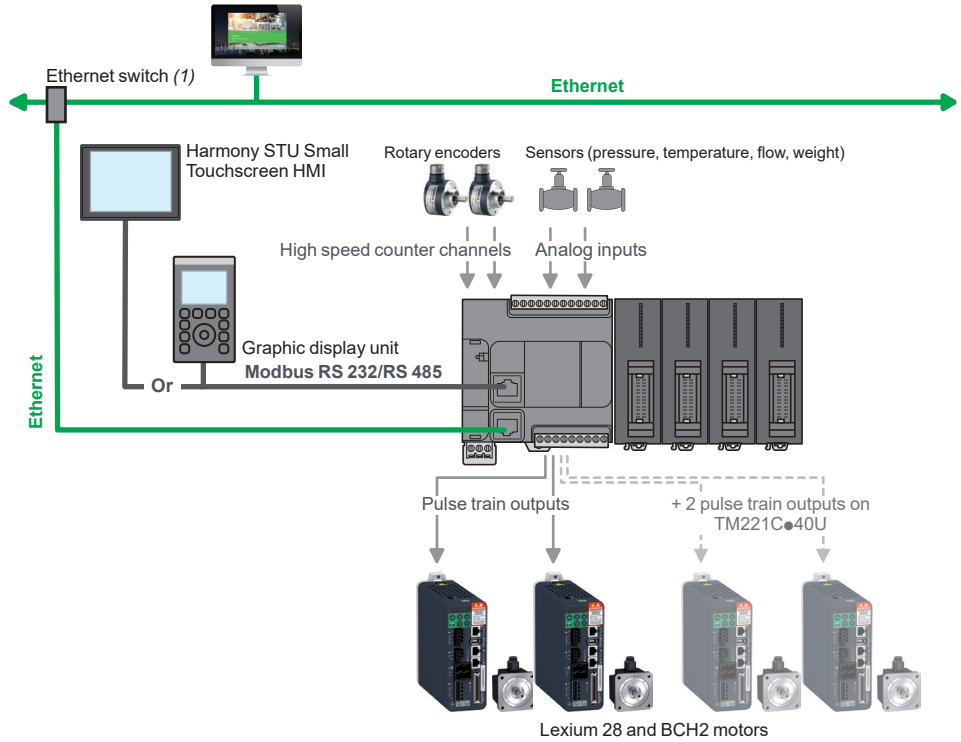
Control architecture

Control architecture for standalone machines

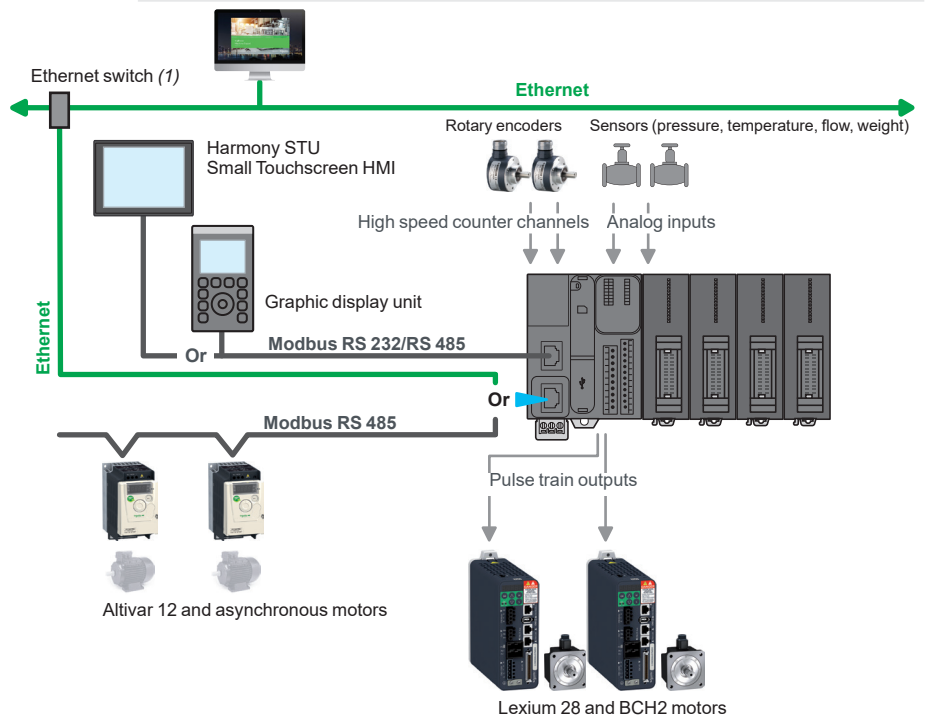
Typical applications: repetitive machines

- Packaging: recycling machines
- Textile-clothing machines
- Commercial equipment: automatic wash units, advertising hoardings, etc.
- Construction/service sector: access and entry control for automated systems
- Other sectors: woodworking, agriculture, fish farming, incubators, swimming pools, etc.

M221 (TM221C●●●●) controllers



M221 Book (TM221M●●●●) controllers



(1) Only use one switch, as Hubs are not compatible.

Modicon M221

Programmable logic controller for hardwired architectures

Embedded communication

Characteristics

Embedded communication

Communication on Ethernet network (1)

TM221CE●●● and TM221ME●●● controllers have an embedded RJ 45 Ethernet port (10/100 Mbps, MDI/MDIX) with Modbus TCP (Client/Server and IOScanner), and Ethernet IP (adapter) protocols.

- As well as the default address based on the MAC address, it is possible to assign the controller IP address via a DHCP server or via a BOOTP server.
- The Ethernet port also offers the same application upload/download, update, and debug functions when the controller is supplied with power.
- A firewall can be used to lock each communication protocol.

Serial links (1)

■ Each TM221C●●● controller has an embedded serial link that can be configured as RS 232 or RS 485. A 5 V/200 mA power supply is available on the RJ 45 connector, which then supplies the **TMH2GDB** display unit or Harmony STU (Small Touchscreen HMI).

■ Each TM221M●●● controller has one or two embedded serial links.

- The SL1 serial link, found on each M221 Book controller, can be configured as RS 232 or RS 485. A 5 V/200 mA power supply is available on the RJ 45 connector, which then supplies the **TMH2GDB** display unit, Harmony STU (Small Touchscreen HMI) (1), or other device.
- The SL2 serial link, found on TM221M16●●●, TM221M24●●● and TM221M40●●● controllers only, is configured as RS 485.

Serial links also offer application upload/download, update, and debug functions when the controller is supplied with power. Embedded in both links are the three main commercially-available protocols:

- Modbus ASCII/RTU Master or Slave
- ASCII character string
- Modbus Serial IOScanner

Software programming with power off charging function

The programming port, equipped with a USB mini-B connector, is embedded in each M221 and M221 Book controller; it is dedicated to communication with a PC equipped with EcoStruxure Machine Expert - Basic for programming, debugging, and maintenance.

In addition, it offers the ability to load an application program or update the firmware without the controller being powered by another source.

Characteristics of M221 and M221 Book logic controllers

- Certifications: CÉ, cULus, cULus Hazardous Location, RCM, EAC, LR, ABS, DNV-GL, and UKCA
- Standards: IEC/EN 61131-2, UL 508, ANSI/ISA, CSA C22.2 No. 213, No. 142, and IACS E10

Environment

- Ambient operating temperature: - 10...+ 55 °C (14...+ 131 °F)
- Storage temperature: - 25...+ 70 °C (- 13...+ 158 °F)
- Relative humidity: 10...95% (non-condensing)

Operating altitude:

- 0...2,000 m (0...6,562 ft): complete specification for temperature and insulation
- 2,000...4,000 m (6,562...13,123 ft):
- temperature derating: + 1 °C/400 m (+ 1.8 °F/1,312 ft)
- insulation losses: 150 V ⇄ /1,000 m (3,280 ft)
- Storage altitude: 0...3,000 m (0...9,842 ft)

- Immunity to mechanical stress (vibrations):
- For 1131: 5...8.4 Hz (amplitude 3.5 mm/0.138 in.); 8.4...150 Hz (acceleration 1 g)
- For merchant navy: 5...13.2 Hz (amplitude 1.0 mm/0.039 in.); 13.2...100 Hz (acceleration 0.7g)

Power supply

Two power supply types are available depending on the M221 controller model: 24 V ⇄ or 100-240 V ~ 50/60 Hz

- Voltage limit (including ripple): 19.2...28.8 V ⇄ /85...264 V ~
- Immunity to micro-cuts (class PS-2): 10 ms
- Max. consumption:
- TM221 powered with AC, depending on model: 31...41 VA without expansion modules, 46...70 VA with maximum expansion module configuration
- TM221 powered with DC, depending on model: 3.2...4.9 W without expansion modules, 10...23 W with maximum expansion module configuration

(1)

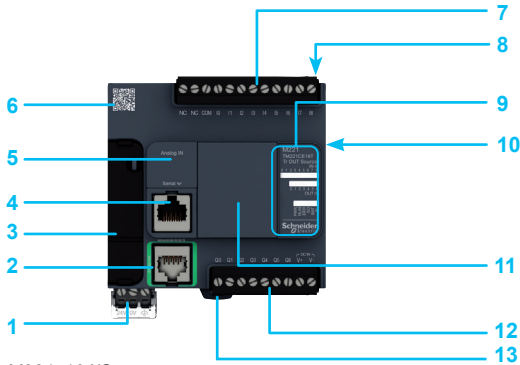
□ Connection cables and accessories for Industrial Ethernet network, consult the catalog ref. [DIA3ED2160105EN](#)
 □ Connection cables and accessories for serial link, consult the catalog ref. [DIA3ED2160106EN](#)
 □ Harmony STU (Small Touchscreen HMI), consult the catalog ref. [DIA5ED2130607EN](#)

Description

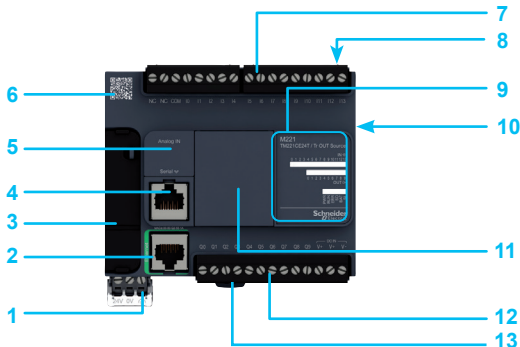
Modicon M221

Programmable logic controller for hardwired architectures

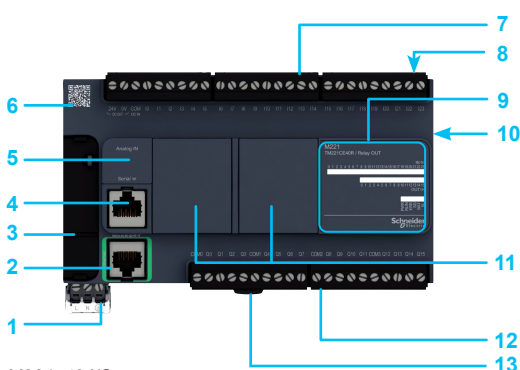
Modicon M221 logic controllers



M221: 16 I/O



M221: 24 I/O



M221: 40 I/O



TMH2GDB

Description

M221 logic controllers (TM221C●●●)

- 1 Removable screw terminal block, 3 terminals for connecting the 24 V $\overline{\text{DC}}$ or 100-240 V \sim power supply (depending on the model)
- 2 On TM221CE●●● controllers: RJ 45 connector for Ethernet network, with activity and exchange speed LED indicator
- 3 Behind the removable cover:
 - Mini-B USB connector for connecting a PC equipped with EcoStruxure Machine Expert - Basic software
 - Slot for the industrial SD memory card
 - Run/Stop switch
- 4 Serial link port (RS 232 or RS 485): RJ 45 connector
- 5 Behind a flap: dedicated removable connector for two analog inputs
- 6 QR code for access to the controller technical documentation
- 7 Connection of 24 V $\overline{\text{DC}}$ logic inputs on removable screw terminal blocks (1)
- 8 On top of the controller: slot for backup battery
- 9 LED display block showing:
 - the status of the controller and its components (battery, industrial SD memory card)
 - the status of the serial link
 - the status of the embedded I/O
- 10 On the side of the controller: TM3 bus connector for the link with a Modicon TM3 expansion module
- 11 Slot(s) for I/O cartridge(s), communication cartridge, or application cartridge(s): one on M221 controllers with 16 and 24 I/O, two on M221 controllers with 40 I/O
- 12 Connection of relay/transistor logic outputs: on removable screw terminal blocks (1)
- 13 Clip for locking on \perp symmetrical rail

(1) Removable screw terminal blocks equipped with screw terminals, supplied with M221 controller.

Graphic display unit TMH2GDB

- 1 Control screen: backlit STN graphic screen, two-tone (white/red)
- 2 Ten command buttons, two of which can be customized with the option of identifying associated functions
- 3 Rotary navigation and control wheel

On the back of the display unit:

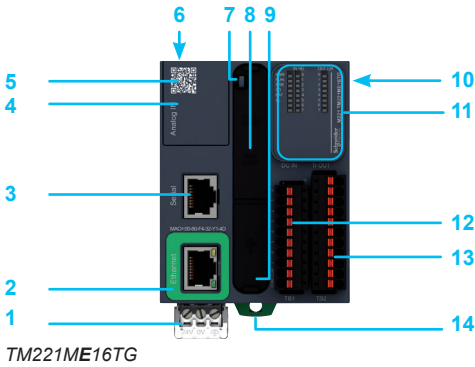
- 4 Mounting system consisting of locking nut, seal, and anti-rotation tee
- 5 RJ 45 connector for the cable connecting the graphic display unit to the Modicon M221/M221 Book logic controller

Description

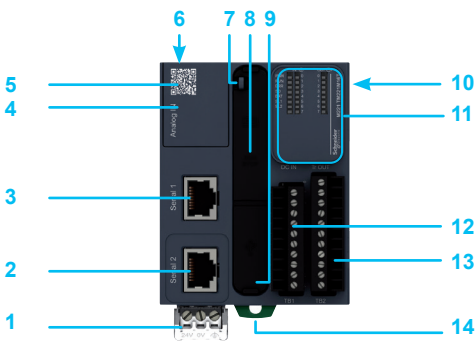
Modicon M221

Programmable logic controller for hardwired architectures

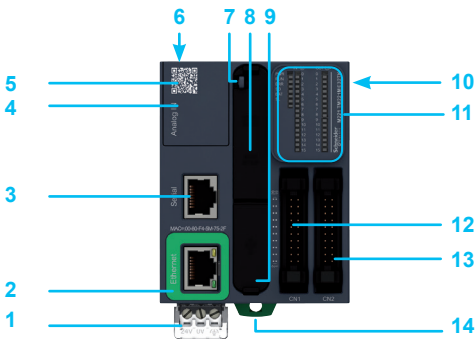
Modicon M221 Book logic controllers



TM221ME16TG



TM221M16T



TM221ME32TK



TMH2GDB

Description

M221 Book logic controllers (TM221M●●●)

- 1 Removable screw terminal block, 3 terminals for connecting the 24 V $\overline{\text{DC}}$ supply
 - 2 On TM221ME16●● and TM221ME32●● controllers: RJ 45 connector for Ethernet network, with activity and exchange speed LED indicator
On TM221M16●● and TM221M32●● controllers: RJ 45 connector for SL2 serial link
 - 3 SL1 serial link port (RJ 45 connector)
 - 4 Behind the removable cover: removable connector for two analog inputs
 - 5 QR identification code for the controller technical documentation
 - 6 Backup battery slot
- Behind the removable cover: 7, 8, and 9
- 7 Slot for the industrial SD memory card
 - 8 Run/Stop switch
 - 9 Mini-B USB connector for connecting a PC equipped with EcoStruxure Machine Expert - Basic software
 - 10 TM3 bus connector for linking to a Modicon TM3 expansion module
 - 11 LED display block showing:
 - the status of the controller and its components (battery, industrial SD memory card)
 - the status of the serial links
 - the status of the I/O
 - 12 Connection of 24 V $\overline{\text{DC}}$ logic inputs:
 - on 16-channel controllers: removable screw or spring terminal blocks (1)
 - on 32-channel controllers: HE 10 connector
 - 13 Connection of relay/transistor logic outputs:
 - on 16-channel controllers: removable screw or spring terminal blocks (1)
 - on 32-channel controllers: HE10 connector
 - 14 Clip for locking on \perp symmetrical rail

(1) Removable terminal blocks equipped with screw or spring-type terminals depending on controller type. Terminal blocks supplied with M221 Book controller.

Graphic display unit TMH2GDB

- 1 Control screen: backlit STN graphic screen, two-tone (white/red)
- 2 Ten command buttons, two of which can be customized with the option of identifying associated functions
- 3 Rotary navigation and control wheel

On the back of the display unit:

- 4 Mounting system consisting of locking nut, seal, and anti-rotation tee
- 5 RJ 45 connector for the cable connecting the graphic display unit to the Modicon M221/M221 Book logic controller

Modicon M221

Programmable logic controller for hardwired architectures

Modicon M221 logic controllers



TM221C16R, TM221C16T, TM221CE16U



TM221CE16R, M221CE16T, TM221CE16U



TM221C24R, M221C24T, TM221CE24U



TM221CE24R, TM221CE24T, TM221CE24U



TM221C40R, TM221C40T, TM221CE40U



TM221CE40R, TM221CE40T, TM221CE40U



TMC2AI2



TMC2AQ2V



TMC2AQ2C



TMC2TI2



TMC2SL1



TMC2PACK01



TMC2HOIS01



TMC2CONV01

References							
Modicon M221 logic controllers (1)							
Number of logic I/O	Logic inputs	Logic outputs	Analog inputs	Integrated communication ports (2)		Reference	Weight kg/lb
				Ethernet (RJ 45)	Serial link (RJ 45)		
■ 100-240 V ~ power supply							
16 inputs/outputs	9 sink/source 24 V $\overline{\text{---}}$ inputs, inc. 4 high-speed inputs	7 relay outputs	2 x 0...10 V inputs	–	1	TM221C16R	0.346 0.763
				1	1	TM221CE16R	0.346 0.763
24 inputs/outputs	14 sink/source 24 V $\overline{\text{---}}$ inputs, inc. 4 high-speed inputs	10 relay outputs	2 x 0...10 V inputs	–	1	TM221C24R	0.395 0.871
				1	1	TM221CE24R	0.395 0.871
40 inputs/outputs	24 sink/source 24 V $\overline{\text{---}}$ inputs, inc. 4 high-speed inputs	16 relay outputs	2 x 0...10 V inputs	–	1	TM221C40R	0.456 1.005
				1	1	TM221CE40R	0.456 1.005
■ 24 V $\overline{\text{---}}$ power supply							
16 inputs/outputs	9 sink/source 24 V $\overline{\text{---}}$ inputs, inc. 4 high-speed inputs	7 source transistor outputs, inc. 2 high-speed outputs	2 x 0...10 V inputs	–	1	TM221C16T	0.346 0.763
				1	1	TM221CE16T	0.346 0.763
24 inputs/outputs	14 sink/source 24 V $\overline{\text{---}}$ inputs, inc. 4 high-speed inputs	10 source transistor outputs, inc. 2 high-speed outputs	2 x 0...10 V inputs	–	1	TM221C24T	0.395 0.871
				1	1	TM221CE24T	0.395 0.871
40 inputs/outputs	24 sink/source 24 V $\overline{\text{---}}$ inputs, inc. 4 high-speed inputs	16 source transistor outputs, inc. 2 high-speed outputs	2 x 0...10 V inputs	–	1	TM221C40T	0.456 1.005
				1	1	TM221CE40T	0.456 1.005
16 inputs/outputs	9 sink/source 24 V $\overline{\text{---}}$ inputs, inc. 4 high-speed inputs	7 sink transistor outputs, inc. 2 high-speed outputs	2 x 0...10 V inputs	–	1	TM221C16U	0.558 1.230
				1	1	TM221CE16U	0.626 1.380
24 inputs/outputs	14 sink/source 24 V $\overline{\text{---}}$ inputs, inc. 4 high-speed inputs	10 sink transistor outputs, inc. 2 high-speed outputs	2 x 0...10 V inputs	–	1	TM221C24U	0.770 1.698
				1	1	TM221CE24U	0.570 1.257
40 inputs/outputs	24 sink/source 24 V $\overline{\text{---}}$ inputs, inc. 4 high-speed inputs	16 sink transistor outputs, inc. 4 high-speed outputs	2 x 0...10 V inputs	–	1	TM221C40U	0.630 1.389
				1	1	TM221CE40U	0.780 1.720
Options for Modicon TM221C●●●● logic controllers (3)							
Description	Function		Reference	Weight kg/lb			
I/O cartridges	2 analog inputs (12-bit resolution) configurable as:		TMC2AI2	0.025 0.055			
	- 0...10 V voltage						
	- 0...20 mA/4...20 mA current						
	Screw terminal version						
	2 analog outputs (12-bit resolution) 0...10 V voltage		TMC2AQ2V	0.025 0.055			
Screw terminal version							
2 analog outputs (12-bit resolution) 4...20 mA current		TMC2AQ2C	0.025 0.055				
Screw terminal version							
2 temperature inputs (12-bit resolution) type K, J, R, S, B, E, T, N, C, PT100, PT1000, NI100, NI1000		TMC2TI2	0.025 0.055				
Screw terminal version							
Communication cartridge	1 additional serial link on screw terminal block		TMC2SL1 (4)	0.025 0.055			
Cartridges for specific application	Hoisting application		TMC2HOIS01	0.025 0.055			
	Packaging application		TMC2PACK01	0.025 0.055			
	Conveyor system application		TMC2CONV01 (4)	0.025 0.055			

(1) M221 controllers are supplied with:
 - removable screw terminal blocks for connecting the I/O
 - a removable screw terminal block for connecting the power supply
 - a button cell backup battery (BR2032 or CR2032X)
 - a cable for connecting the analog inputs

(2) Each M221 logic controller has an embedded USB mini-B programming port.

(3) One cartridge for controllers with 16 and 24 I/O. Two cartridges maximum for controllers with 40 I/O, only one of which can be a communication cartridge.

(4) Just one cartridge per controller.

Modicon M221

Programmable logic controller for hardwired architectures

Modicon M221 Book logic controllers



References									
Modicon M221 Book logic controllers (1)									
24 V $\bar{\text{---}}$ power supply									
No. of logic I/O	Logic inputs	Logic outputs	Analog inputs	Embedded communication ports (2)			Terminal block for I/O conn. Interval (mm/in.)	Reference	Weight kg/lb
				Ethernet (RJ 45)	Serial link SL1 (RJ 45)	Serial link SL2 (RJ 45)			
16 inputs/ outputs	8 sink/source 24 V $\bar{\text{---}}$ inputs, inc. 4 high-speed inputs	8 relay outputs	2 x 0...10 V inputs	–	1	1	Screw (3.81/0.15)	TM221M16R	0.264 0.582
				–	1	1	Spring (3.81/0.15)	TM221M16RG	0.264 0.582
				1	1	–	Screw (3.81/0.15)	TM221ME16R	0.264 0.582
				1	1	–	Spring (3.81/0.15)	TM221ME16RG	0.264 0.582
16 inputs/ outputs	8 sink/source 24 V $\bar{\text{---}}$ inputs, inc. 4 high-speed inputs	8 source transistor outputs, inc. 2 high-speed outputs	2 x 0...10 V inputs	–	1	1	Screw (3.81/0.15)	TM221M16T	0.264 0.582
				–	1	1	Spring (3.81/0.15)	TM221M16TG	0.264 0.582
				1	1	–	Screw (3.81/0.15)	TM221ME16T	0.264 0.582
				1	1	–	Spring (3.81/0.15)	TM221ME16TG	0.264 0.582
32 inputs/ outputs	16 sink/source 24 V $\bar{\text{---}}$ inputs, inc. 4 high-speed inputs	16 source transistor outputs, inc. 2 high-speed outputs	2 x 0...10 V inputs	–	1	1	HE 10 connector	TM221M32TK	0.270 0.595
				1	1	–	HE 10 connector	TM221ME32TK	0.270 0.595

(1) M221 Book controllers are supplied with:

- removable terminal blocks (screw or spring-type depending on controller model) for connecting the I/O
- a removable screw terminal block for connecting the power supply
- a button cell backup battery (BR2032 or CR2032X)
- a cable for connecting the analog inputs

(2) Each M221 Book logic controller has an embedded USB mini-B programming port.

Modicon M221

Programmable logic controller for hardwired architectures

Options, separate parts



TMH2GDB



ZB5AZ905



A9A15151



DX1AP52



XBTZ9980



TMASD1



TMAM2



TMAT2PSET



TMAT2CSET



TMAT2CSET16G



TMAT2CSET24G



TMAT2CSET40G



TMAT2MSET



TMAT2MSETG



TMAHOL02

References

Remote graphic display unit, mounting accessories, cable

Designation	Description	Unit reference	Weight kg/lb
Remote graphic display unit	<ul style="list-style-type: none"> □ For data display and modification (1) □ Contains 1 bezel key ZB5AZ905 	TMH2GDB	0.170 0.37
Tightening tool	For tightening the cover on Ø 22 mm unit	ZB5AZ905	0.016 0.04
Mounting plate for symmetrical rail (Sold in lots of 4)	For clipping onto 35 mm (1.378 in.) symmetrical rail (1 hole Ø 22 mm (0.87 in.))	A9A15151	0.040 0.09
Metal bracket for panel mounting, threaded (Sold in lots of 10)	1 hole Ø 22 mm (0.87 in.) Mounted using 2 screws, 7 mm (0.28 in.) diameter	DX1AP52	0.065 0.014
Connecting cables Used between TMH2GDB remote display unit and M221/M221 Book logic controller	Equipped with an RJ 45 connector at each end Length: 2.5 m (8.2 ft)	XBTZ9980	0.230 0.51
	Equipped with an RJ 45 connector at each end Length: 1 m (3.28 ft)	VW3A1104R10	0.050 0.110

Option

Industrial SD memory card	Application backup and program transfer Capacity: 256 MB	TMASD1	0.004 0.009
---------------------------	---	--------	----------------

Separate parts

Designation	Description	Unit reference	Weight kg/lb
Mounting kit Sold in lots of 10	For plate or panel mounting of M221 and M221 Book controllers	TMAM2	0.065 0.143

Replacement parts

Designation	Description	Reference	Weight kg/lb
Set of terminal blocks for connecting the power supply on M221 and M221 Book logic controllers	8 removable screw terminal blocks	TMAT2PSET	0.127 0.280
Set of screw terminal blocks for connecting the I/O on M221 controllers	Removable screw terminal connectors: 8 different connectors for equipping a TM221C●●●● logic controller (8 x I/O)	TMAT2CSET	0.127 0.280
Set of spring terminal blocks for connecting the I/O on M221 controllers	1 x 9-way and 1 x 12-way removable spring terminal blocks for TM221C●●●	TMAT2CSET16G	0.127 0.280
	1 x 8-way, 1 x 9-way and 1 x 13-way removable spring terminal blocks for TM221C●●●	TMAT2CSET24G	0.127 0.280
	3 x 9-way and 2 x 10-way removable spring terminal blocks for TM221C●●●	TMAT2CSET40G	0.127 0.280
Set of terminal blocks for connecting the I/O on M221 Book logic controllers	4 x 10-way and 4 x 11-way removable screw terminal blocks for TM221M●●●	TMAT2MSET	0.127 0.280
	4 x 10-way and 4 x 11-way removable spring terminal blocks for TM221M●●●	TMAT2MSETG	0.127 0.280
Set of battery holders	2 spare battery holders for M221 and M221 Book controllers	TMAHOL02	0.130 0.286
Backup battery	The battery supplied with each controller is not available as a spare part in the Schneider catalog. If a replacement part is needed, use a Panasonic battery type BR2032 or a Murata battery type CR2032X.		

(1) Compatible only with M221 and M221 Book logic controllers whose firmware is version V1.3 or later. HMI pages can be configured with SoMachine Basic from version V1.3.

Modicon M221

Programmable logic controller for hardwired architectures

Programming software, expansion modules, connection cables



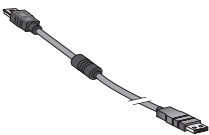
[EcoStruxure Machine Expert - Basic software](#)



[DIA3ED2180701EN](#)



[DIA3ED2140109EN](#)



TCSXCNAMUM3P



TMACBL1

References

Programming software

Description	For use with	Reference
EcoStruxure Machine Expert - Basic (1)	For Modicon M221 and M221 Book logic controllers	Only available as a download from our website www.schneider-electric.com

Modicon TM3 I/O system

Description	For use with	Reference
Modicon TM3 expansion modules (2)	For Modicon M221 and M221 Book logic controllers	Please consult our catalogue ref. DIA3ED2140109EN

Modicon TM3 Ethernet Bus Coupler (2)	For Modicon M221 and M221 Book logic controllers	Please consult our catalogue ref. DIA3ED2140109EN
--	--	---

Connection cables

Description	Use	Length	Reference	Weight kg/lb
Programming cordsets	From the PC USB port to the USB mini-B port on M221 and M221 Book controllers	3 m (0.98 ft)	TCSXCNAMUM3P (3)	0.065 0.143
		1.8 m (5.90 ft)	BMXXCAUSBH018	0.065 0.143
Cable for connecting the analog inputs embedded in M221 and M221 Book controllers	Equipped with 1 dedicated removable connector at one end and bare wires at the other end	1 m (3.28 ft)	TMACBL1	0.024 0.053

(1) Please consult catalog Ref. [DIA3ED2140109EN](#)

(2) Please consult catalog Ref. [DIA3ED2180701EN](#)

(3) Unshielded, non-grounded cable. Only for use on temporary connections. For permanent connections, use cable reference BMXXCAUSBH018.

A	
A9A15151	24
B	
BMXXCAUSBH018	25
D	
DX1AP52	24
T	
TCSXCNAMUM3P	25
TM221C16R	22
TM221C16T	22
TM221C16U	22
TM221C24R	22
TM221C24T	22
TM221C24U	22
TM221C40R	22
TM221C40T	22
TM221C40U	22
TM221CE16R	22
TM221CE16T	22
TM221CE16U	22
TM221CE24R	22
TM221CE24T	22
TM221CE24U	22
TM221CE40R	22
TM221CE40T	22
TM221CE40U	22
TM221M16R	23
TM221M16RG	23
TM221M16T	23
TM221M16TG	23
TM221M32TK	23
TM221ME16R	23
TM221ME16RG	23
TM221ME16T	23
TM221ME16TG	23
TM221ME32TK	23
TMACBL1	25
TMAHOL02	24
TMAM2	24
TMASD1	24
TMAT2CSET	24
TMAT2CSET16G	24
TMAT2CSET24G	24
TMAT2CSET40G	24
TMAT2MSET	24
TMAT2MSETG	24
TMAT2PSET	24
TMC2AI2	22
TMC2AQ2C	22
TMC2AQ2V	22
TMC2CONV01	22
TMC2HOIS01	22
TMC2PACK01	22
TMC2SL1	22
TMC2TI2	22
TMH2GDB	24
V	
VW3A1104R10	24
X	
XBTZ9980	24
Z	
ZB5AZ905	24

Life Is On



Learn more about our products at
www.se.com

The information provided in this documentation contains general descriptions and/or technical characteristics of the performance of the products contained herein. This documentation is not intended as a substitute for and is not to be used for determining suitability or reliability of these products for specific user applications. It is the duty of any such user or integrator to perform the appropriate and complete risk analysis, evaluation and testing of the products with respect to the relevant specific application or use thereof. Neither Schneider Electric nor any of its affiliates or subsidiaries shall be responsible or liable for misuse of the information contained herein.

Design: Schneider Electric
Photos: Schneider Electric

Schneider Electric Industries SAS

Head Office
35, rue Joseph Monier - CS 30323
F-92500 Rueil-Malmaison Cedex
France

DIA3ED2140106EN
February 2023 - V9.1

X-ON Electronics

Largest Supplier of Electrical and Electronic Components

Click to view similar products for [LCD Graphic Display Modules & Accessories](#) category:

Click to view products by [Schneider](#) manufacturer:

Other Similar products are found below :

[LCM-H12864GSFH-Y](#) [HG2G-V5FT22TF-W](#) [HG1G-4VT22TF-S](#) [PMB-1569](#) [PMB-1219](#) [DEM 128064E1 FGH-PW](#) [EA DIP205G-4NLED](#)
[DEM 128064E1 FGH](#) [EA DIP205B-6NLW](#) [RX320240F-FHW-V](#) [DEM 240128A1 FGH-PW](#) [RX1602N-LLW-TS](#) [PG12864WRF-KCN-H-Q](#)
[DEM 128064G1 FGH-PW](#) [EA DIP205J-4NLW](#) [RG12864A-GHC-V](#) [RG12864A-GHY-V](#) [RG12864A-TIG-V](#) [RG12864K-BIW-VBG](#)
[RG24064A-BIW-V](#) [RG24064A-GHW-V](#) [RG320240A1-BIW-V](#) [RG320240B-BIW-V](#) [RG320240B-FHW-V](#) [13892](#) [DEM 128064B SBH-PW-](#)
[N](#) [DEM 128064I FGH-PW](#) [DEM 128064P SBH-PW-N](#) [DEM 128128D FGH-PW](#) [DEM 240064B FGH-PW](#) [DEM 320240B FGH-PW-N](#)
[14972](#) [15868](#) [15932](#) [EA W240-7KHLW](#) [16239](#) [RX240128A-TIW](#) [RX240160A-FHW](#) [NHD-12232WG-EYYH-V#A](#) [NHD-160128WG-](#)
[BTGH-VZ#-1](#) [NHD-240128WG-AFTI-VZ#C5](#) [NHD-320240WG-ATMI-TZ#](#) [17344](#) [18231](#) [19192](#) [19340](#) [19653](#) [RG24064A-TIW-V](#) [20755](#)
[EA FL-14P](#)