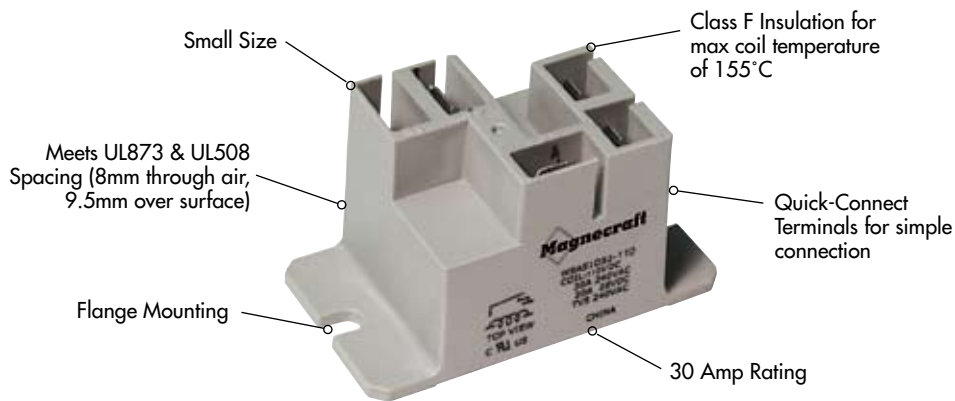


## W9A Miniature Power Relays/SPST and SPDT 30 Amp Rating (DC and AC)

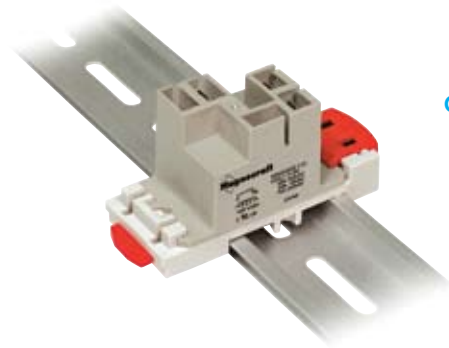


### General Specifications

(UL 508)

SPST

Contact Characteristics		Units	W9AS1
Number and type of Contacts			SPST-NO
Contact materials			Silver Alloy
Thermal (Carrying) Current		A	30
Maximum Switching Voltage		V	300V
Switching Current @ Voltage		Resistive	30A @ 240V 50/60Hz
		Resistive	30A @ 28V
		HP	2 @ 240V 50/60Hz
		HP	1 @ 125V 50/60Hz
		Pilot Duty	470 VA
Minimum Switching Requirement	Minimum	mA	100 @ 5 VDC, 12 VAC
Coil Characteristics			
Voltage Range		V	12...277
	% of Nominal	V	5...110
Operating Range			85% to 120%
			75% to 120%
Average consumption		VA	2.8
		W	1
Drop-out voltage threshold			10%
			10%
Performance Characteristics			
Electrical Life (UL 508)	Operations @ Rated Current	(Resistive)	100,000
Mechanical Life	Unpowered		10,000,000
Operating time (response time)		ms	15
Dielectric	Between coil and contact	V	2500
	Between contacts	V	1500
Environment			
Product certifications	Standard version		UL
Ambient air temperature around the device	Storage	°C	-40...+85
	Operation	°C	-40...+55
Vibration resistance	Operational	g-n	3, 10-55Hz
Shock resistance		g-n	10
Weight		grams	33

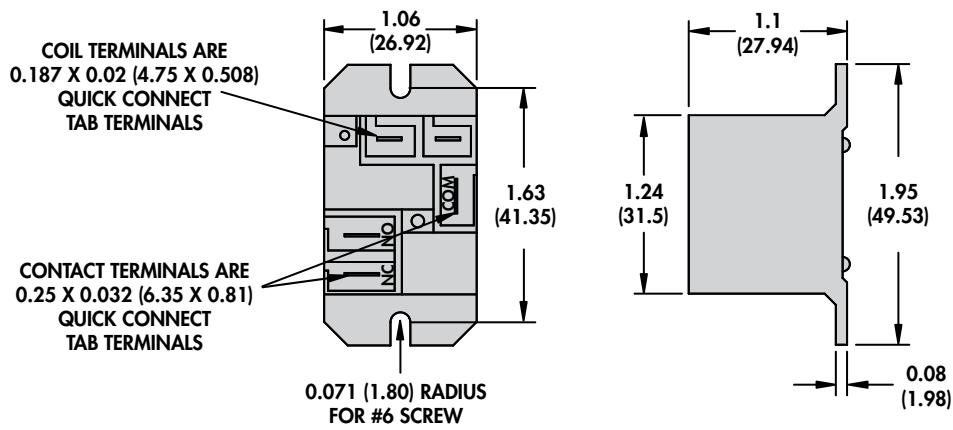
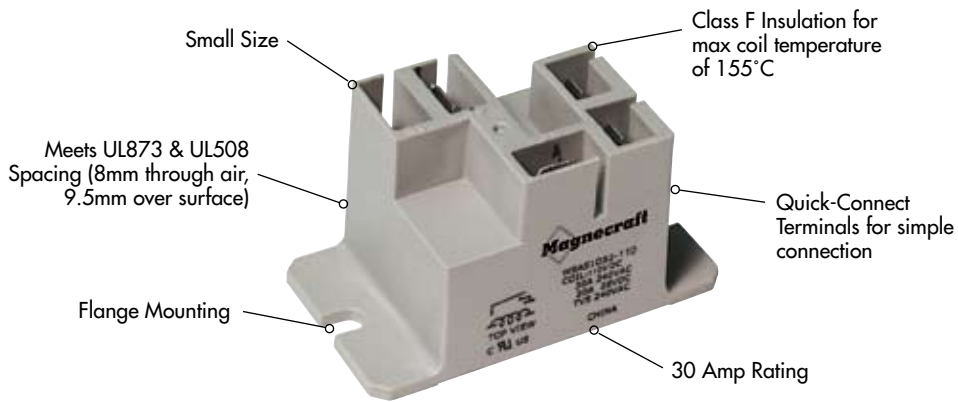


Optional DIN Rail Adapter  
(16-9ADIN-1)  
See Section 3 p.17

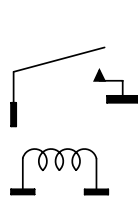
**SPDT**

Normally Open Contact	Normally Closed Contact
Silver Alloy	Silver Alloy
30	15
300V	300V
30A @ 240V 50/60Hz	15A @ 240 50/60Hz Max
30A @ 28V	10A @ 28V
2 @ 240V 50/60Hz	1/2 @ 240 V 50/60Hz
1 @ 125V 50/60Hz	1/4 @ 125 V 50/60Hz
470 VA	275 VA
100 @ 5 VDC, 12 VAC	100 @ 5 VDC, 12 VAC
12...277	
5...110	
85% to 120%	
75% to 120%	
2.8	
1	
10%	
10%	
100,000	
10,000,000	
15	
2500	
1500	
UL	
-40...+85	
-40...+55	
3, 10-55Hz	
10	
33	

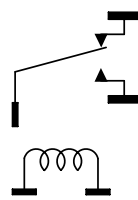
# W9A Miniature Power Relays/SPST and SPDT 30 Amp Rating (DC and AC) *continued*



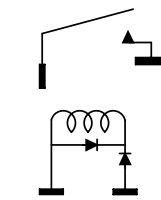
## WIRING DIAGRAMS



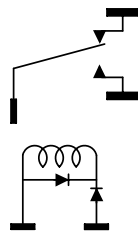
1 FORM A  
DC OPERATED  
(TOP VIEW)  
Fig. A



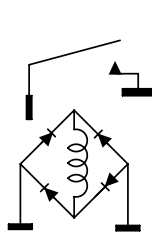
1 FORM C  
DC OPERATED  
(TOP VIEW)  
Fig. B



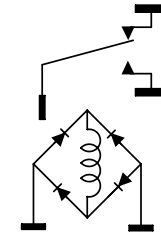
1 FORM A  
AC OPERATED  
1/2 WAVE RECTIFIED  
(TOP VIEW)  
Fig. C



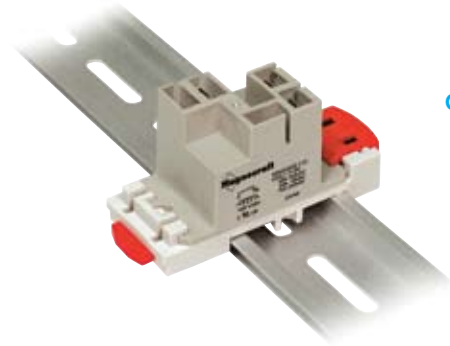
1 FORM C  
AC OPERATED  
1/2 WAVE RECTIFIED  
(TOP VIEW)  
Fig. D



1 FORM A  
AC OPERATED  
FULL WAVE RECTIFIED  
(TOP VIEW)  
Fig. E



1 FORM C  
AC OPERATED  
FULL WAVE RECTIFIED  
(TOP VIEW)  
Fig. F



Optional DIN Rail Adapter  
(16-9ADIN-1)  
See Section 3 p.17

**Standard Part Numbers**

**BOLD-FACED PART NUMBERS ARE NORMALLY STOCKED**

Nominal Input Voltage	Coil Resistance (OHMS)	Part Number	Figure	Contact Configuration
<b>SPST DC Relays</b>				
5 VDC	25 Ω	<b>W9AS1D52-5</b>	A	SPST-NO
12 VDC	144 Ω	<b>W9AS1D52-12</b>	A	SPST-NO
24 VDC	576 Ω	<b>W9AS1D52-24</b>	A	SPST-NO
110/125 VDC	12100 Ω	W9AS1D52-110	A	SPST-NO
<b>SPDT DC Relays</b>				
5 VDC	25 Ω	<b>W9AS5D52-5</b>	B	SPDT
12 VDC	144 Ω	<b>W9AS5D52-12</b>	B	SPDT
24 VDC	576 Ω	<b>W9AS5D52-24</b>	B	SPDT
110/125 VDC	12100 Ω	W9AS5D52-110	B	SPDT
<b>SPST AC Relays</b>				
24 VAC 50/60 Hz	500 Ω	<b>W9AS1A52-24</b>	E	SPST-NO
120 VAC 50/60 Hz	3000 Ω	<b>W9AS1A52-120</b>	C	SPST-NO
240 VAC 50/60 Hz	12100 Ω	W9AS1A52-240	C	SPST-NO
<b>SPDT AC Relays</b>				
24 VAC 50/60 Hz	500 Ω	<b>W9AS5A52-24</b>	F	SPDT
120 VAC 50/60 Hz	3000 Ω	<b>W9AS5A52-120</b>	D	SPDT
240 VAC 50/60 Hz	12100 Ω	<b>W9AS5A52-240</b>	D	SPDT

**Part Number Builder**

Series	Cover	Configuration	Current Type	Mount	Contact Material	Voltage
W9A	P = Enclosed dust cover S = Sealed dust cover	1 = SPST-NO 5 = SPDT	A = AC D = DC	5 = Panel Mount Flanged Cover	2 = Silver Alloy	Coil Voltage

## X-ON Electronics

Largest Supplier of Electrical and Electronic Components

*Click to view similar products for [General Purpose Relays](#) category:*

*Click to view products by [Schneider](#) manufacturer:*

Other Similar products are found below :

[PCN-105D3MH,000](#) [59641F200](#) [LY1SAC110120](#) [5X827E](#) [5X837F](#) [5X840F](#) [5X842F](#) [5X848E](#) [LY2N-AC120](#) [LY2S-AC220/240](#) [LY2-US-AC120](#) [LY3-US-AC120](#) [LY4F-UA-DC12](#) [LY4F-UA-DC24](#) [LY4F-US-AC120](#) [LY4F-US-AC240](#) [LY4F-US-DC24](#) [LY4F-VD-AC110](#) [LYQ20DC12](#) [M115C60](#) [M115N010](#) [M115N0150](#) [6031007G](#) [603-12D](#) [61211T0B4](#) [61212T400](#) [61222Q400](#) [61243B600](#) [61243C500](#) [61243Q400](#) [61311BOA2](#) [61311BOA6](#) [61311BOA8](#) [61311C0A2](#) [61311COA1](#) [61311COA6](#) [61311F0A2](#) [61311QOA1](#) [61311QOA4](#) [61311T0D6](#) [61311TOA6](#) [61311TOA7](#) [61311TOB3](#) [61311TOB4](#) [61311U0A6](#) [61312Q600](#) [61312T400](#) [61312T600](#) [61313U200](#) [61313U400](#)