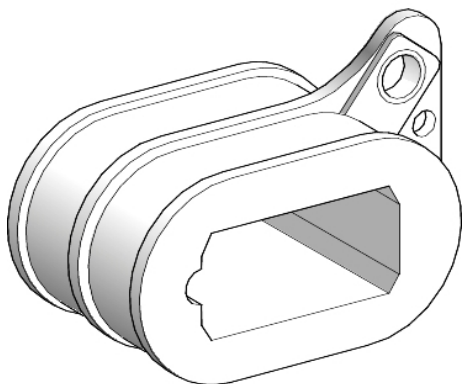


Product availability: Non-Stock - Not normally stocked in distribution facility



Main

Range	TeSys
Product or component type	Contacteur coil
Number of Poles compatible	2P
Range compatibility	TeSys CV1BG contacteur TeSys CV3BG contacteur
Control circuit type	AC/DC
Coil type	Low consumption
[Uc] control circuit voltage	48 V DC

Complementary

Average resistance	7.26 Ohm at 20 °C
Inrush power in W	130...250 W at 20 °C for 2P
Operating rate	7200 cyc/mn at 55 °C
Product weight	0.49 lb(US) (0.22 kg)

Ordering and shipping details

Category	18074 - SPARE PARTS DISCOUNT I11
Discount Schedule	I11
GTIN	00785901715375
Nbr. of units in pkg.	1
Package weight(Lbs)	0.4100000000000003
Returnability	N
Country of origin	FR

Offer Sustainability

RoHS (date code: YYWW)	Compliant - since 0801 - Schneider Electric declaration of conformity Schneider Electric declaration of conformity
REACH	Reference not containing SVHC above the threshold
California proposition 65	WARNING: This product can expose you to chemicals including:
----- Substance 1	Lead and lead compounds, which is known to the State of California to cause cancer and birth defects or other reproductive harm.
----- More information	For more information go to www.p65warnings.ca.gov

Contractual warranty

Warranty period	18 months
-----------------	-----------

X-ON Electronics

Largest Supplier of Electrical and Electronic Components

Click to view similar products for [Contactor Accessories](#) category:

Click to view products by [Schneider](#) manufacturer:

Other Similar products are found below :

[3RT1945-5AP61](#) [SZ-N2SJ](#) [YC9Z-CI6](#) [CA5-22M](#) [EHTK210](#) [MS325-SM1](#) [13222574](#) [SW182B-1](#) [SW190B-24DC-CW4](#) [SZ-CD1](#) [SZ-N8J](#)
[SZ-ZM1E](#) [YC9Z-CNA111SR](#) [YC9Z-CUA422](#) [DPEAN11](#) [3RH1911-1GA40](#) [3RH29111GA22](#) [3RT1924-5AC21](#) [3RT1924-5AK61](#) [3RT1935-](#)
[5AP61](#) [3RT1944-5AC21](#) [3RT1944-5AP61](#) [3RT1945-5AC21](#) [3TY6483-0AK6](#) [CA7-PA-01](#) [CA7-PA-10](#) [CA7-PA-11](#) [CA7-PV-S22](#) [CA7-S9](#)
[B88269X2200C101](#) [CAL5-11](#) [DB25/25A](#) [DB42](#) [DB80](#) [LDC4](#) [SZ-A11](#)