



Easy Series Automation and Control Essentials Catalog 2023

Everything you need for your fit-for-purpose control panels

www.se.com

Life Is On

Schneider
Electric

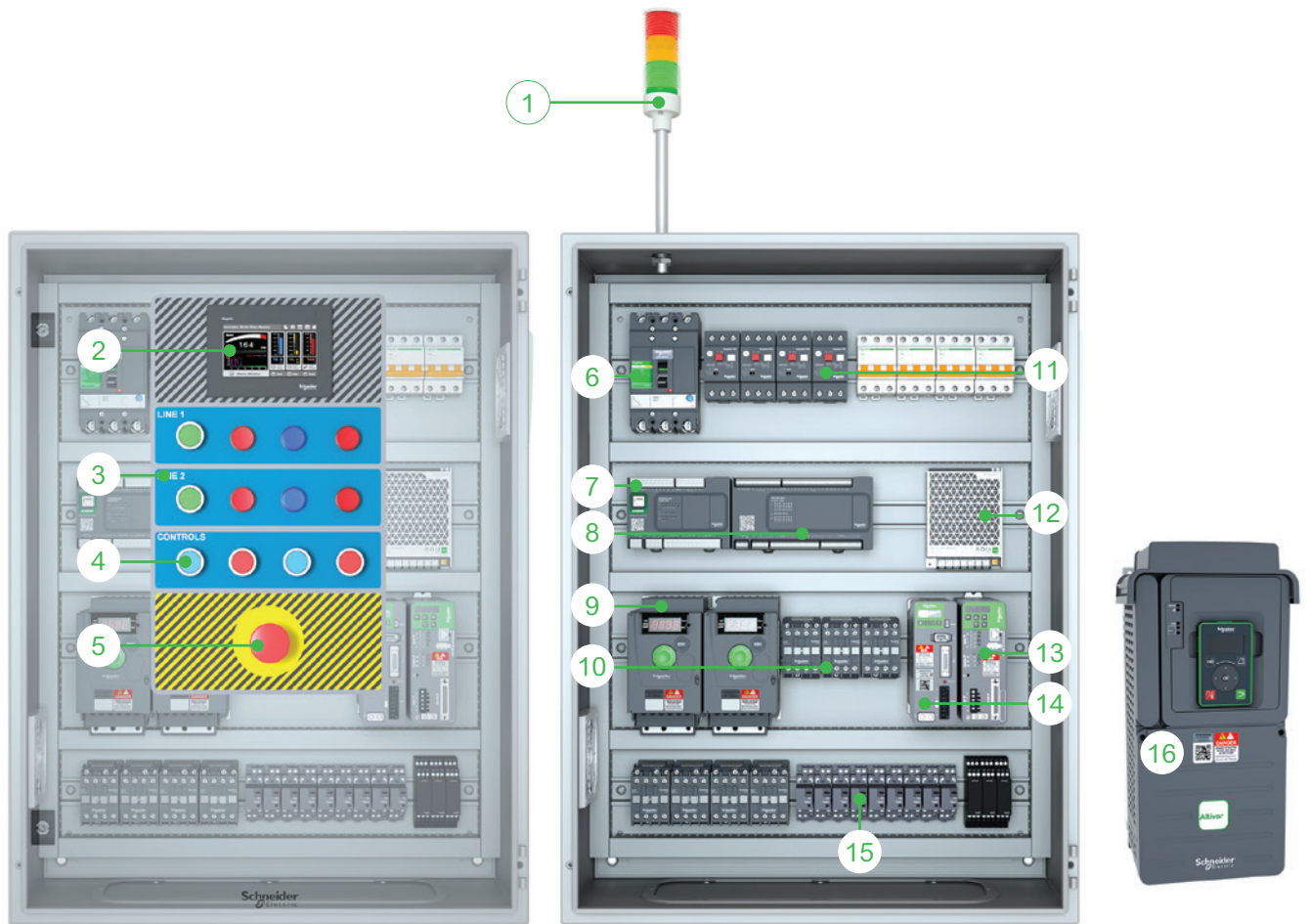


The Essentials for your control panels

Within this catalog you'll find all the components you need to deliver high core performance focused industrial control panels and machines.

The catalog will help you build your fit-for-purpose equipment faster and boost the efficiency of your industrial automation business.

New 2023 product highlights



- | | |
|--|--|
| 1 Easy Harmony XVG Tower Light | 9 Easy Altivar ATV 310 Variable Speed Drives |
| 2 Easy Harmony ET6 Touch screen panel | 10 EasyPact TVS Contactor |
| 3 Harmony Customizable Legend Panel | 11 EasyPact TVS Motor Protection Circuit Breaker |
| 4 Easy Harmony XA2 Pushbuttons | 12 Easy Modicon ABL2 Power Supply |
| 5 Easy Harmony XA2 Emergency Switching off Pushbuttons | 13 Easy Lexium 26 Servo |
| 6 EasyPact CVS Protection of Distribution System | 14 Easy Lexium 16 Servo |
| 7 Easy Modicon M200 Logic Controller | 15 Easy Harmony RXM Electromechanical Relays |
| 8 Easy Modicon M100 Logic Controller | 16 Easy Altivar ATV 610 Variable Speed Drives |

Make your everyday work smoother and easier

As a machine builder or panel builder, you need a reliable source of products to deliver high core performance focused equipment and services on time.

When working with Schneider, you've got that covered.

See for yourself!

Count on a reliable partner for your business

With Schneider Electric, a world leader in automation and control, you get reliable, robust, and affordable products for you and your customers.

Our global network of local distributors ensures high product availability and quick delivery times. So you can easily meet your deadlines.

When just enough is just right!

Save time on component selection with this catalog of automation and control essentials. Use our handy online selectors and configurators to easily find the best solution for your specific application and all the technical information you need.

Our tools help machine builders and panel builders improve the efficiency of their everyday work and build fit-for-purpose equipment with high core performance quicker.

Take advantage of learning opportunities

Gain access to our diverse learning resources, providing practical knowledge and tips, and open new opportunities for your business.

Explore the manuals, tutorials, "how to" videos, and online courses to broaden your skills and make your daily work faster and simpler.

- 1 Go to product selectors and configurators
- 2 Download the digital catalog
- 3 Explore our learning resources





Get all the products
you need from a distributor
close to you

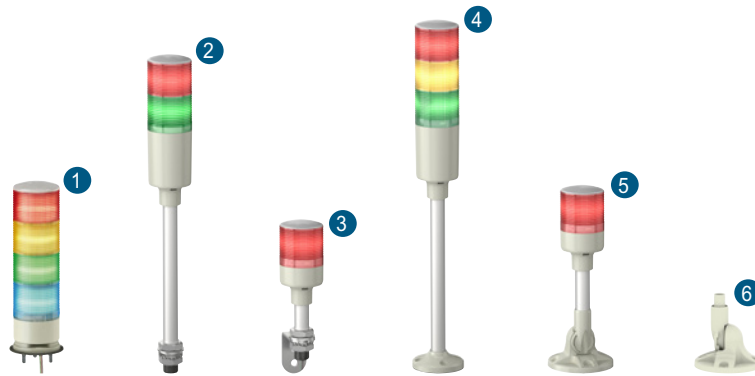
General contents

| | | |
|----|--|----|
| 01 | Easy Harmony control and signaling..... | 6 |
| 02 | Easy Harmony ET6 touch screen panel..... | 16 |
| 03 | Easy Altivar variable speed drives..... | 20 |
| 04 | Easy Harmony electromechanical relays..... | 28 |
| 05 | Easy Modicon ABL2 power supplies..... | 30 |
| 06 | Easy Lexium motion control..... | 32 |
| 07 | Easy Modicon Logic controllers..... | 50 |
| 08 | Easy Sensors - Limit switch..... | 56 |



01. Easy Harmony
pushbuttons, switches, pilot
lights and signaling devices

Easy Harmony XVG Ø 60 monolithic tower lights



| 1 With base mounting | | | | | | | |
|---|----------------------------|--|-------------------------|------------|-------------------------|---------------------------------|---------------------------------|
| Light source | | LED for steady light | | | | | |
| Colors (1) | | ● Red, ● Green | ● Red, ● Amber, ● Green | | | ● Red, ● Amber, ● Green, ● Blue | |
| Voltage | | 24 VAC/VDC | 220~240VAC | 24 VAC/VDC | 220~240VAC | | 24 VAC/VDC |
| Reference | Without buzzer, IP 53 | XVGB2W | XVGM2W | XVGB3W | XVGM3W | | XVGB4W |
| | With buzzer, IP 42 | XVGB2SW | XVGM2SW | XVGB3SW | XVGM3SW | | XVGB4SW |
| 2 With direct aluminium tube mounting | | | | | | | |
| Light source | | LED for steady light | | | | | |
| Colors (1) | | ● Red, ● Green | ● Red, ● Amber, ● Green | | | ● Red, ● Amber, ● Green, ● Blue | |
| Voltage | | 24 VAC/VDC | 220~240VAC | 24 VAC/VDC | 220~240VAC | | 24 VAC/VDC |
| Reference | Without buzzer, IP 23 | XVGB2T | XVGM2T | XVGB3T | XVGM3T | | - |
| | With buzzer, IP 23 | XVGB2ST | XVGM2ST | XVGB3ST | XVGM3ST | | XVGB4ST |
| 3 With aluminium tube mounting and L-bracket | | | | | | | |
| Light source | | LED for steady light | | | | | |
| Colors (1) | | ● Red | ● Red, ● Green | | ● Red, ● Amber, ● Green | | ● Red, ● Amber, ● Green, ● Blue |
| Voltage | | 24 VAC/VDC | 220~240VAC | 24 VAC/VDC | 220~240VAC | 24 VAC/VDC | 220~240VAC |
| Reference | Flashing light with buzzer | XVGB1SFA | XVGM1SFA | - | - | - | - |
| | Without buzzer, IP 23 | XVGB1A | XVGM1A | XVGB2 | XVGM2 | XVGB3 | XVGM3 |
| | With buzzer, IP 23 | XVGB1SA | XVGM1SA | XVGB2S | XVGM2S | XVGB3S | XVGM3S |
| Reference | Without buzzer, IP 23 | XVGB1A | XVGM1A | XVGB2 | XVGM2 | XVGB3 | XVGM3 |
| | With buzzer, IP 23 | XVGB1SA | XVGM1SA | XVGB2S | XVGM2S | XVGB3S | XVGM3S |
| Reference | Without buzzer, IP 53 | XVGB2H | XVGM2H | XVGB3H | XVGM3H | | XVGB4H |
| | With buzzer, IP 42 | XVGB2SH | XVGM2SH | XVGB3SH | XVGM3SH | | XVGB4SH |
| 5 With aluminium tube mounting and foldable bracket | | | | | | | |
| Light source | | LED for steady light | | | | | |
| Colors (1) | | ● Red | ● Red, ● Green | | ● Red, ● Amber, ● Green | | ● Red, ● Amber, ● Green, ● Blue |
| Voltage | | 24 VAC/VDC | 220~240VAC | 24 VAC/VDC | 220~240VAC | 24 VAC/VDC | 220~240VAC |
| Reference | Flashing light with buzzer | XVGB1SM-FA | XVGM1SM-FA | - | - | - | - |
| | Without buzzer, IP 53 | XVGB1MA | XVGM1MA | XVGB2M | XVGM2M | XVGB3M | XVGM3M |
| | With buzzer, IP 42 | XVGB1SMA | XVGM1SMA | XVGB2SM | XVGM2SM | XVGB3SM | XVGM3SM |
| Reference | Without buzzer, IP 53 | XVGB1MA | XVGM1MA | XVGB2M | XVGM2M | XVGB3M | XVGM3M |
| | With buzzer, IP 42 | XVGB1SMA | XVGM1SMA | XVGB2SM | XVGM2SM | XVGB3SM | XVGM3SM |
| Reference | Without buzzer, IP 53 | XVGB1MA | XVGM1MA | XVGB2M | XVGM2M | XVGB3M | XVGM3M |
| | With buzzer, IP 42 | XVGB1SMA | XVGM1SMA | XVGB2SM | XVGM2SM | XVGB3SM | XVGM3SM |
| 6 Accessories (for association) | | | | | | | |
| Color | | ● White | | | | | |
| Unit type | | Folding mounting bracket for support tube mounting | | | | Wall mounting bracket | |
| Reference | | XVGZ02 (2) | | | | XVMZ02W (3) | |

(1) The colors are listed in the same order as the mounting order of the illuminated units (from top to bottom).

(2) Compatible with XVGB●H, XVGB●SH, XVGB●M●, XVGB●SM●, XVGM●H, XVGM●SH, XVGM●M●, XVGM●SM.

(3) Compatible with XVGB●T, XVGB●ST, XVGM●T, XVGM●ST.

Note: Commercial references ending with "A" have shorter pole length.

Easy Harmony XA2 plastic pushbuttons



1 Pushbuttons with flush push, unmarked

| | | | | | | | |
|--|-----------------------|---------|----------|----------|----------|----------|---------|
| Color | ○ White | ● Black | ● Green | ● Red | ● Yellow | ● Blue | |
| Contact | NO | | | NC | NO | | |
| Connection | Screw clamp terminals | | | | | | |
| Complete product for standard mounting | Spring-return | XA2EA11 | XA2EA21 | XA2EA31 | XA2EA42 | XA2EA51 | XA2EA61 |
| | Push-push | - | XA2EH021 | XA2EH031 | XA2EH042 | XA2EH051 | - |
| Contact | NO+NC | | | | | | |
| | - | XA2EA25 | XA2EA35 | XA2EA45 | - | - | |
| Contact | NO | | | | | | |
| | - | - | - | XA2EA41 | - | - | |

2 Pushbuttons with flush push, marked

| | | | | | | |
|--|-----------------------|-----------|-------------|-------------|----------------|-----------|
| Color | ○ White | ● Black | ● Green | ● Red | ● Red | |
| Marking | A | ↑ | "I" (white) | "O" (white) | "STOP" (white) | |
| Contact | NO | | | NC | NC | |
| Connection | Screw clamp terminals | | | | | |
| Complete product for standard mounting | XA2EA3341 | XA2EA3351 | XA2EA3311 | XA2EA6511 | XA2EA4322 | XA2EA4342 |



3 Trigger action Emergency stop mushroom head pushbuttons

| | |
|--|---|
| Color | ● Red |
| Diameter of head | Ø 40 Ø 30 Ø 40 Ø 60 |
| Contact | NC Push-pull NC Turn to release |
| Connection | Screw clamp terminals |
| Complete product for standard mounting | XA2ET42 XA2ES442 XA2ES542 XA2ES642 |

4 Mushroom head pushbuttons, spring return

| | | | |
|--|-----------------------|---------|---------|
| Color | ● Black | ● Green | ● Red |
| Diameter of head | Ø 40 | Ø 40 | Ø 40 |
| Contact | NO | | NC |
| Connection | Screw clamp terminals | | |
| Complete product for standard mounting | XA2EC21 | XA2EC31 | XA2EC42 |



5 Selector switches

| | | | | | | |
|--|-----------------------|---------|---------|---------|---------|---------|
| Positions | 2 ∨ | 2 ∨ | 2 ∨ | 3 ∨ | 3 ∨ | |
| Contact | NO | | NO + NC | 2 NO | | |
| Connection | Screw clamp terminals | | | | | |
| Complete product for standard mounting | Standard handle | XA2ED21 | XA2ED41 | XA2ED25 | XA2ED33 | XA2ED53 |
| | Long handle | XA2EJ21 | - | XA2EJ25 | XA2EJ33 | XA2EJ53 |

6 Key switches

| | | | | | | | |
|--|-----------------------|---------|---------|---------|---------|---------|---------|
| Positions | 2 ∨ | 2 ∨ | 2 ∨ | 3 ∨ | 3 ∨ | 3 ∨ | |
| Contact | NO | 2 NO | | | | | |
| Connection | Screw clamp terminals | | | | | | |
| Complete product for standard mounting | Key switch (No. 455) | XA2EG21 | XA2EG43 | XA2EG63 | XA2EG73 | XA2EG33 | XA2EG03 |

Easy Harmony XA2 plastic pushbuttons

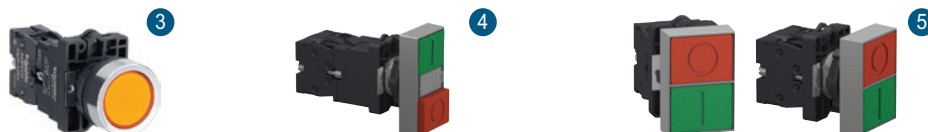


1 Pilot lights with integral LED

| Color | White | Green | Red | Amber | Blue | Yellow | Bi-color(Green/Red) | |
|--|-----------------------|------------|------------|------------|------------|------------|---------------------|------------|
| Connection | Screw clamp terminals | | | | | | | |
| Complete product for standard mounting | 12 V AC/DC | XA2EVJ1LC | XA2EVJ3LC | XA2EVJ4LC | XA2EVJ5LC | XA2EVJ6LC | XA2EVJ8LC | - |
| | 24 V AC/DC | XA2EVB1LC | XA2EVB3LC | XA2EVB4LC | XA2EVB5LC | XA2EVB6LC | XA2EVB8LC | XA2EVB34LC |
| | 30 V AC/DC | XA2EVC1LC | XA2EVC3LC | XA2EVC4LC | XA2EVC5LC | XA2EVC6LC | XA2EVC8LC | - |
| | 48 V AC/DC | XA2EVE1LC | XA2EVE3LC | XA2EVE4LC | XA2EVE5LC | XA2EVE6LC | XA2EVE8LC | - |
| | 63.5 V AC/DC | XA2EVVE1LC | XA2EVVE3LC | XA2EVVE4LC | XA2EVVE5LC | XA2EVVE6LC | XA2EVVE8LC | - |
| | 110 V AC/DC | XA2EVF1LC | XA2EVF3LC | XA2EVF4LC | XA2EVF5LC | XA2EVF6LC | XA2EVF8LC | - |
| | 220...230 V AC | XA2EVM1LC | XA2EVM3LC | XA2EVM4LC | XA2EVM5LC | XA2EVM6LC | XA2EVM8LC | XA2EVM34LC |
| | 220 V DC | XA2EVM1LC | XA2EVM3LC | XA2EVM4LC | XA2EVM5LC | XA2EVM6LC | XA2EVM8LC | - |
| | 380...400 V AC | XA2EVQ1LC | XA2EVQ3LC | XA2EVQ4LC | XA2EVQ5LC | XA2EVQ6LC | XA2EVQ8LC | - |

2 Indicators with Integral LEDs

| Connection | Screw clamp terminals | | | | |
|--|-----------------------|----------------------------|---------------------------|------------------|-------------|
| Type | - | Isolation switch indicator | Circuit breaker indicator | Ground Indicator | |
| Complete product for standard mounting | 110 V AC | - | XA2EVF34SPC | XA2EVM34SPC | XA2EVQ34SPC |
| | 220 V AC | - | XA2EVF34BPC | XA2EVM34BPC | XA2EVQ34BPC |
| | (Green/Red) 380 V AC | - | XA2EVF34GPC | XA2EVM34GPC | XA2EVQ34GPC |



3 Illuminated pushbuttons with integral LED

| Color | White | Green | Red | Yellow | Blue | Red | |
|--|-----------------------|-----------|-----------|-----------|-----------|-----------|-----------|
| Contact | NO | | | | | NC | |
| Connection | Screw clamp terminals | | | | | | |
| Complete product for standard mounting | 24 V AC/DC | XA2EW31B1 | XA2EW33B1 | XA2EW34B1 | XA2EW35B1 | XA2EW36B1 | XA2EW34B2 |
| | 220...230 V AC | XA2EW31M1 | XA2EW33M1 | XA2EW34M1 | XA2EW35M1 | XA2EW36M1 | XA2EW34M2 |
| | 380...400 V AC | XA2EW31Q1 | - | - | - | - | XA2EW34Q2 |

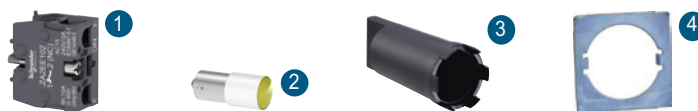
4 Double-headed pushbuttons, spring return with pilot light block

| | | |
|--|----------------|---------------|
| Complete product for standard mounting | 24 VAC/DC | XA2EW7L3741B5 |
| (Green/Red) | 220...230 V AC | XA2EW7L3741M5 |

5 Double-headed pushbuttons, spring return without pilot light block

| | |
|--|-------------|
| Complete product for standard mounting | XA2EA7A3415 |
|--|-------------|

Accessories for Easy Harmony XA2 plastic pushbuttons



1

1 Contact functions (for all XA2 pushbuttons and switches)

| | | |
|------------|-----------------------|----------|
| Type | Contact function | |
| Contact | NO | NC |
| Connection | Screw clamp terminals | |
| Reference | ZA2EE101 | ZA2EE102 |

2 Bulbs with BA 9s base fitting and associated accessories

| | | | |
|-----------|-----------------------------|------------------------------|----------------------------|
| Color | <input type="radio"/> White | <input type="radio"/> Yellow | <input type="radio"/> Blue |
| Voltage | 24 VAC/VDC | | |
| Reference | DL1LED241 | DL1LED245 | DL1LED246 |

3 Bezel tool

| | |
|-------------|----------------------------|
| Application | Tightening head fixing nut |
| Reference | ZB5AZ905 |

4 Anti-rotation plate

| | |
|-------------|-----------------------------|
| Application | Prevents head from rotation |
| Reference | ZB5AZ902 |

Easy Harmony XB2 metal pushbuttons



1 Pushbuttons with flush push, unmarked (1)

| | | | | | | |
|--|-----------------------------|-----------------------------|-----------------------------|---------------------------|------------------------------|----------------------------|
| Color | <input type="radio"/> White | <input type="radio"/> Black | <input type="radio"/> Green | <input type="radio"/> Red | <input type="radio"/> Yellow | <input type="radio"/> Blue |
| Contact | NO | | | NC | NO | |
| Connection | Screw clamp terminals | | | | | |
| Complete product for standard mounting | XB2BA11C | XB2BA21C | XB2BA31C | XB2BA42C | XB2BA51C | XB2BA61C |

2 Pushbuttons with flush push, marked (1)

| | | | | |
|--|-----------------------------|-----------------------------|-----------------------------|---------------------------|
| Color | <input type="radio"/> White | <input type="radio"/> Black | <input type="radio"/> Green | <input type="radio"/> Red |
| Marking | "Arrow" | "Arrow" | "I" (white) | "O" (white) |
| Contact | NO | | | |
| Connection | Screw clamp terminals | | | |
| Complete product for standard mounting | XB2BA3341C | XB2BA3351C | XB2BA3311C | XB2BA4322C |

3 Pushbuttons with projecting push, unmarked (1)

| | | |
|--|-----------------------------|---------------------------|
| Color | <input type="radio"/> Green | <input type="radio"/> Red |
| Contact | NO | NC |
| Connection | Screw clamp terminals | |
| Complete product for standard mounting | XB2BL31C | XB2BL42C |



1 Pushbuttons with booted push, unmarked (1)

| | | | |
|--|-----------------------------|-----------------------------|---------------------------|
| Color | <input type="radio"/> Black | <input type="radio"/> Green | <input type="radio"/> Red |
| Contact | NO | | NC |
| Connection | Screw clamp terminals | | |
| Complete product for standard mounting | XB2BP21C | XB2BP31C | XB2BP42C |

2 Mushroom head pushbuttons, spring return (1)

| | | | | | |
|--|-----------------------------|-----------------------------|---------------------------|------------------------------|-----------------------------|
| Color | <input type="radio"/> Black | <input type="radio"/> Green | <input type="radio"/> Red | <input type="radio"/> Yellow | <input type="radio"/> Black |
| Diameter of head | Ø 40 | | | Ø 60 | |
| Contact | NO | | NC | NO | |
| Connection | Screw clamp terminals | | | | |
| Complete product for standard mounting | XB2BC21C | XB2BC31C | XB2BC42C | XB2BC51C | XB2BR21C |



1 Emergency stop pushbuttons (1)(2)

| | | |
|--|---------------------------|--------------------|
| Color | <input type="radio"/> Red | |
| Diameter of head | Ø 40 | |
| Contact | NC Push -pull | NC Turn to release |
| Connection | Screw clamp terminals | |
| Complete product for standard mounting | XB2BT842C | XB2BS8442C |

2 Emergency switch off pushbuttons (1)

| | | | | |
|--|---------------------------|--------------------|-----------|-----------|
| Color | <input type="radio"/> Red | | | |
| Diameter of head | Ø 40 | Ø 30 | Ø 40 | Ø 60 |
| Contact | NC Push -pull | NC Turn to release | | |
| Connection | Screw clamp terminals | | | |
| Complete product for standard mounting | XB2BT42C | XB2BS442C | XB2BS542C | XB2BS642C |

(1) This product line will be available starting in Q3 2023.

(2) Emergency stop pushbuttons should have a maximum of 4 numbers of contact blocks, installed in 2 rows only.

Easy Harmony XB2 metal pushbuttons



Selector switches (1)

| | | | | | | | | |
|---|-----------------------|-----------------|-----------------|-----------------|-----------------|-----------------|-----------------|-----------------|
| Positions | 2 ∨ | 2 ∩ | 3 ∨ | 3 ∩ | 2 ∨ | | | |
| Contact | NO | NO + NC | NO | NO + NC | 2 NO | | | |
| Connection | Screw clamp terminals | | | | | | | |
| Complete product for standard mounting | 1 Standard handle | XB2BD21C | XB2BD25C | XB2BD41C | XB2BD45C | XB2BD33C | XB2BD53C | XB2BD73C |
| | 2 Long handle | XB2BJ21C | XB2BJ25C | - | - | XB2BJ33C | XB2BJ53C | - |

3 Key switches (No. 455) (1)

| | | | | | | | |
|---|-----------------------|-----------------|-----------------|-----------------|-----------------|-----------------|-----------------|
| Positions | 2 ∨ | 2 ∩ | 2 ∩ | 3 ∨ | 3 ∩ | 3 ∩ | |
| Connection | Screw clamp terminals | | | | | | |
| Complete product for standard mounting | NO | XB2BG21C | XB2BG41C | XB2BG61C | - | - | - |
| | 2 NO | - | - | - | XB2BG33C | XB2BG53C | XB2BG03C |
| | NO + NC | XB2BG25C | XB2BG45C | XB2BG65C | - | - | - |



Illuminated pushbuttons with integral LED (1)

| | | | | | | |
|---|-----------------------|-------------------|-------------------|-------------------|-------------------|-------------------|
| Color | ○ White | ● Green | ● Red | ● Yellow | ● Blue | |
| Contact | NO | | | | | |
| Connection | Screw clamp terminals | | | | | |
| Complete product for standard mounting | 1 24 V AC/DC | XB2BW31B1C | XB2BW33B1C | XB2BW34B1C | XB2BW35B1C | XB2BW36B1C |
| | 2 220...230 V AC | XB2BW31M1C | XB2BW33M1C | XB2BW34M1C | XB2BW35M1C | XB2BW36M1C |



Joysticks

| | | |
|---------------------|------------------|------------------|
| Return type | Spring return | Stay |
| 2 Directions | XD2PA22CR | XD2PA12CR |
| 4 Directions | XD2PA24CR | XD2PA14CR |



Buzzers

| | | |
|------------------------|-------------------|------------------|
| Characteristics | Non-illuminated 1 | Illuminated 2 |
| 24 V AC/DC | XB2BSBC | XB2BSB4LC |
| 220...230 V AC | XB2BSMC | XB2BSM4LC |

(1) This product line will be available starting in Q3 2023.

Note: For illuminated pilot lights, please refer to Easy Harmony XA2 range.

Easy Harmony XB2 metal pushbuttons



1 Pushbutton heads with flush push, unmarked

| | | | | | | |
|--|---------|---------|---------|---------|----------|---------|
| Color | ○ White | ● Black | ● Green | ● Red | ● Yellow | ● Blue |
| Push button Head for standard mounting | ZB2BA1C | ZB2BA2C | ZB2BA3C | ZB2BA4C | ZB2BA5C | ZB2BA6C |

2 Pushbutton heads with flush push, marked

| | | | | | | |
|--|-----------------|-----------|-----------|-----------|-----------|----------------|
| Color | ○ White | ● Black | ● Green | ● Red | ● Blue | |
| Marking | "Arrow" (black) | "Arrow" | "I" | "O" | "STOP" | "Double arrow" |
| Push button Head for standard mounting | ZB2BA334C | ZB2BA335C | ZB2BA331C | ZB2BA432C | ZB2BA434C | ZB2BA651C |

3 Pushbutton heads with projecting push, unmarked

| | | | | |
|--|---------|---------|---------|----------|
| Color | ● Black | ● Green | ● Red | ● Yellow |
| Push button Head for standard mounting | ZB2BL2C | ZB2BL3C | ZB2BL4C | ZB2BL5C |

4 Pushbutton head with projecting push, marked

| | |
|--|-----------|
| Color | ● Red |
| Push button Head for standard mounting | ZB2BL432C |



1 Pushbutton heads with booting push, unmarked

| | | | | | |
|--|---------|---------|---------|----------|---------|
| Color | ● Black | ● Green | ● Red | ● Yellow | ● Blue |
| Push button Head for standard mounting | ZB2BP2C | ZB2BP3C | ZB2BP4C | ZB2BP5C | ZB2BP6C |

2 Mushroom pushbutton heads, spring return

| | | | | | | |
|--|---------|---------|---------|----------|---------|---------|
| Color | ● Black | ● Green | ● Red | ● Yellow | ● Blue | |
| Push button Head for standard mounting | Ø 40 | ZB2BC2C | ZB2BC3C | ZB2BC4C | ZB2BC5C | ZB2BC6C |
| | Ø 60 | ZB2BR2C | ZB2BR3C | ZB2BR4C | - | - |



1 Emergency stop pushbutton heads (1)

| | | |
|--|-----------|-----------------|
| Color | ● Red | |
| Diameter of head | Ø 40 | |
| Release type | Push-pull | Turn to release |
| Push button head for standard mounting | ZB2BT84C | ZB2BS844C |

2 Emergency switch off pushbutton heads

| | | | | | | |
|--|-----------|-----------------|----------|----------|----------|----------|
| Color | ● Red | ● Yellow | ● Black | ● Red | | |
| Diameter of head | Ø 40 | Ø 30 | | Ø 40 | Ø 60 | |
| Release type | Push-pull | Turn to release | | | | |
| Push button head for standard mounting | ZB2BT4C | ZB2BT5C | ZB2BS42C | ZB2BS44C | ZB2BS54C | ZB2BS64C |

(1) Emergency stop pushbuttons should have a maximum of 4 numbers of contact blocks, installed in 2 rows only.

Easy Harmony XB2 metal pushbuttons



1

Selector switch heads

| | | | | | | |
|--|-------------------|---------|---------|---------|---------|---------|
| Positions | | 2 ∇ | 2 ∇ | 3 ∇ | 3 ∇ | 3 ∇ |
| Complete product for standard mounting | 1 Standard handle | ZB2BD2C | ZB2BD4C | ZB2BD3C | ZB2BD5C | ZB2BD7C |
| | 2 Long handle | ZB2BJ2C | ZB2BJ4C | ZB2BJ3C | ZB2BJ5C | ZB2BJ7C |

3 Key switch heads (No. 455)

| | | | | | | | |
|--|--|---------|---------|---------|---------|---------|---------|
| Positions | | 2 ∇ | 2 ∇ | 2 ∇ | 3 ∇ | 3 ∇ | 3 ∇ |
| Selector switch head for standard mounting | | ZB2BG2C | ZB2BG4C | ZB2BG6C | ZB2BG3C | ZB2BG5C | ZB2BG0C |



1 Illuminated pushbutton heads with flush push

| | | | | | | |
|--|--|----------|----------|----------|----------|----------|
| Color | | ○ White | ● Green | ● Red | ● Orange | ● Blue |
| Push button head for standard mounting | | ZB2BW31C | ZB2BW33C | ZB2BW34C | ZB2BW35C | ZB2BW36C |

2 Illuminated pushbutton heads with projecting push

| | | | | |
|--|--|----------|----------|----------|
| Color | | ○ White | ● Green | ● Red |
| Push button head for standard mounting | | ZB2BW11C | ZB2BW13C | ZB2BW14C |



Contact block sub-assemblies

| | | | | | | |
|----------------------|--|-----------------------|-----------|-----------|-----------|-------------|
| Contact | | 1 NO | 1 NC | 2 NO | 2 NC | 1 NO + 1 NC |
| Connection | | Screw clamp terminals | | | | |
| 1 With fixing collar | | ZB2BZ101C | ZB2BZ102C | ZB2BZ103C | ZB2BZ104C | ZB2BZ105C |
| 2 No fixing collar | | ZB2BE101C | ZB2BE102C | - | - | - |



1 Illuminated contact block sub-assemblies, BA9S bulb base with LED bulb

| | | | | | | |
|-------------|------|-----------------------|-----------|-----------|-----------|-----------|
| Color | | ● White | ● Green | ● Red | ● Orange | ● Blue |
| Connection | | Screw clamp terminals | | | | |
| 24V AC/DC | 1 NO | ZB2BWB11C | ZB2BWB31C | ZB2BWB41C | ZB2BWB51C | ZB2BWB61C |
| | 1 NC | - | ZB2BWB32C | ZB2BWB42C | ZB2BWB52C | - |
| 220-230V AC | 1 NO | ZB2BWM11C | ZB2BWM31C | ZB2BWM41C | ZB2BWM51C | ZB2BWM61C |
| | 1 NC | - | ZB2BWM32C | ZB2BWM42C | ZB2BWM52C | - |

2 Illuminated contact block sub-assemblies, BA9S bulb base without bulb

| | | | | | | |
|-----------------|--|-----------------------|-----------|-----------|-----------|--|
| Contact | | NO | NC | 2 NO | NO + NC | |
| Connection | | Screw clamp terminals | | | | |
| <380V AC direct | | ZB2BW061C | ZB2BW062C | ZB2BW063C | ZB2BW065C | |

Easy Harmony XB2 metal pushbuttons



Push-push module (1)

| | |
|-----------------------|----------|
| Push button convertor | ZB2BZ21C |
|-----------------------|----------|



BA9S LED bulbs

| Color | <input type="radio"/> White | <input checked="" type="radio"/> Green | <input type="radio"/> Red | <input type="radio"/> Orange | <input type="radio"/> Blue |
|---------------|-----------------------------|--|---------------------------|------------------------------|----------------------------|
| Connection | Screw clamp terminals | | | | |
| 24V AC/DC (2) | DL1-LED241 | DL1-LED243 | DL1-LED244 | - | - |
| 110V AC/DC | DL1-LED1101 | DL1-LED1103 | DL1-LED1104 | DL1-LED1105 | DL1-LED1106 |
| 220V AC/DC | - | DL1-LED2203 | DL1-LED2204 | DL1-LED2205 | DL1-LED2206 |

(1) Component to install before contact blocks, to convert spring return connection to push-push connection.

(2) 24V AC/DC bulbs are sold in lots of 10.

Accessories for Easy Harmony XB2 metal pushbuttons



1

EMERGENCY STOP

2

1 Empty Legend holders (1)

| | | |
|--------------------------------|------------|------------|
| Size | 30 x 40 mm | 30 x 50 mm |
| Suitable for legend plate size | 8 x 27 mm | 18 x 27 mm |
| Reference | ZB2BZ32C | ZB2BZ33C |

2 Legend plates (1)

| Marking | "STOP" | "ON" | "OFF-ON" | "EMERGENCY STOP" | "OFF-ON" | Unmarked |
|-----------|--------------------------------------|--|-----------|---|--|-----------------------------|
| Size | 8 x 27 mm | | | 18 x 27 mm | | |
| Color | <input checked="" type="radio"/> Red | <input checked="" type="radio"/> Black | | <input checked="" type="radio"/> Yellow | <input checked="" type="radio"/> Black | <input type="radio"/> White |
| Reference | ZBY02304C | ZBY02311C | ZBY02367C | ZBY04330C | ZBY502367C | ZBY5102C |



3



4



5

3 Emergency stop legend (1)

| | |
|-------------|---------------------------------------|
| Application | Legend for emergency stop push button |
| Reference | ZB2BY9330C |

4 Emergency stop guard

| | |
|-------------|---|
| Application | Guard for dia 40mm emergency stop push button |
| Reference | ZB2BZ1605C |

5 Dust protection boot (1)

| | |
|-------------|---------------------|
| Application | Dust protection cap |
| Reference | ZB2BPAC |

(1) Sold in lots of 10.



02. Easy Harmony ET6

Easy Harmony ET6 Essential Touch-screen Panels



Easy Harmony ET6 SIO models with IP65 degree of protection

| | | |
|-----------------------------------|---|--|
| Screen size | 7" ¹ | 10.1" ² |
| Screen resolution (pixels) | 800 x 480 WVGA | 1024 x 600 WSVGA |
| Touch screen or keypad | Touch screen | |
| Software | Vijeo Designer Basic V1.2 or above | |
| Memory capacity | User data memory | 256 MB (for system data , screen data and logging data storage) |
| | Backup memory | 128 KB |
| | Local logging data storage | max. 32MB |
| Communication | Serial line | 9-way male SUB-D, RS-232C (COM1) + 9-way male SUB-D, RS-422/RS485 (COM2) |
| | USB connection | 1 micro-B connector |
| Operating temperature | 0...50 °C | |
| Industrial certifications | CE, UL/cUL 61010-2-201, KC, EAC, UKCA, RCM, European RoHS/China RoHS, REACH, WEEE | |
| Cut-out (mm) | 190 x 135 | 255 x 185 |
| Dimensions (mm) | 205.5 x 150.5 x 45 | 270.5 x 200.5 x 47 |
| Reference | HMIET6401 | HMIET6501 |



Easy Harmony ET6 ETH models with IP65 degree of protection

| | | | | |
|-----------------------------------|--|--|--------------------|--------------------|
| Screen size | 7" ³ | 10.1" ⁴ | 12.1" ⁵ | 15.6" ⁶ |
| Screen resolution (pixels) | 800 x 480 WVGA | 1024 x 600 WSVGA | 1280 x 800 WXGA | 1366 x 768 FWXGA |
| Touch screen or keypad | Touch screen | | | |
| Software | Vijeo Designer Basic V1.2 or above | | | |
| Memory capacity | User data memory | 256 MB (for system data , screen data and logging data storage) | | |
| | Backup memory | 128 KB | | |
| | Local logging data storage | max. 32MB | | |
| Communication | Ethernet port | Ethernet 10/100BASE-TX | | |
| | Serial line | 9-way male SUB-D, RS-232C (COM1) + 9-way male SUB-D, RS-422/RS485 (COM2) | | |
| | USB connection | 1 type A connector + 1 micro-B connector | | |
| Operating temperature | 0...50 °C | | | |
| Industrial certifications | CE, UL/cUL 61010-2-201, KC, EAC, UKCA, RCM, European RoHS, China RoHS, REACH, WEEE | | | |
| Cut-out (mm) | 190 x 135 | 255 x 185 | 295 x 217 | 394 x 250 |
| Dimensions (mm) | 205.5 x 150.5 x 45 | 270.5 x 200.5 x 47 | 310.5 x 232.5 x 50 | 412 x 268 x 50 |
| Reference | HMIET6400 | HMIET6500 | HMIET6600 | HMIET6700 |

Easy Harmony ET6 - Programming Software and Accessories



Vijeo Designer Basic, programming software for Easy Harmony ET6 panels

| | |
|--------------------------------|--|
| Compatibility | All Easy Harmony ET6 panels (required V1.2 or above) |
| Type of Vijeo Designer license | Single-station Build Time |
| Number of stations | 1 |
| Type of support | DVD |
| License duration | Unlimited |
| Reference | To download this software, visit Schneider Electric web site, Vijeo Designer Basic |

2



Spare parts

| | |
|---------------|---------------------------------------|
| Description | Power supply connector (5 pieces/set) |
| Compatibility | All Easy Harmony ET6 |
| Reference | HMIZGPWS1 |



Connection accessories

| | | |
|------------------|---|--|
| Connection type | 1 USB micro-B connector (male) + 1 USB micro-B connector (female) ¹ | 1 USB type A connector (male) + 1 USB type A connector (female) ² |
| Description | Extension cable that attaches USB (micro-B) interface to the front panel of the cabinet | Extension cable that attaches USB (type A) interface to the front panel of the cabinet |
| Cable length (m) | 1 | 1.8 |
| Reference | HMIZSUSBB2 | XBTZGUSB |



Cables for connecting Easy Harmony ET6 panels to Schneider Electric products

| | | |
|------------------------|--|--|
| Range compatibility | Modicon M221, M241, M251, M262, M340, M218, M238, M258 | TeSys U/T starters, Altivar drives, Altistart starters, Lexium motion control, Preventa XPS MC |
| Connection type | 1 male connector RJ45 + 1 female connector 9-way Sub-D | 1 male connector RJ45 + 1 female connector 9-way Sub-D |
| Interface | RS 485 | |
| Communication protocol | - | Modbus |
| Compatibility | All Easy Harmony GXU panels | |
| Cable length (m) | 2.5 | |
| Reference | XBTZ9008 | XBTZ9008 |

Easy Harmony ET6 - Accessories



| Cables for third-party PLCs | |
|---|---|
| Third-party PLCs | Customizable cables |
| Compatibility | All Easy Harmony ET6 models |
| Connection cable | RS 422 |
| Connection type | 9-way SUB-D/flying leadsat other end 1 |
| Interface | RS 422 |
| Cable length (m) | 5 |
| Reference | XBTZG9722 |
| Connecting Easy Harmony ET6 panels via Modbus serial link | |
| Description | Modbus serial link Power supply connector |
| Compatibility | All Easy Harmony ET6 models |
| Tap-off units | 8-port Modbus splitter box LU9GC32-porttap junctionTWDXC32, and TWDXC32RJ |
| Communication protocol | Modbus |
| Connection type | 1 male connector RJ45/9-way SUB-D 2 |
| Interface | RS 485 |
| Cable length (m) | 2.5 |
| Reference | XBTZ9008 |

(1) Customized cable with Siemens PB connector 6ES7972-0Bx12-0XA0.

2



03. Easy Altivar variable speed drives

Easy Altivar 610 - IP 20 drives (Power range from 0.75 kW to 160 kW)



Three-phase supply voltage: 380...460 V 50/60 Hz, with integrated category C3 EMC filter

| ND: Normal duty (2), HD: Heavy duty (3) | | | kW | HP | kW | HP | kW | HP | kW | HP | kW | HP |
|---|------------------------------------|----|-----------------------------|------|-------------|------|-------------|-----|-------------|-----|-------------|-----|
| Motor (1) | Power indicated on rating plate | ND | 0.75 | 0.37 | 1.5 | 0.75 | 2.2 | 1.5 | 3 | 2.2 | 4 | 3 |
| | | HD | 1 | 0.5 | 2 | 1 | 3 | 2 | 4 | 3 | 5 | – |
| Easy Altivar 610 | Max. continuous output current (1) | | 2.2 | 1.5 | 4.0 | 2.2 | 5.6 | 4.0 | 7.2 | 5.6 | 9.3 | 7.2 |
| Dimensions: W x H x D (mm) | EMC plate not mounted (mm) | | 145 x 297 x 203 1 | | | | | | | | | |
| Reference | | | ATV610U07N4 | | ATV610U15N4 | | ATV610U22N4 | | ATV610U30N4 | | ATV610U40N4 | |

| ND: Normal duty (2), HD: Heavy duty (3) | | | kW | HP | kW | HP | kW | HP | kW | HP | kW | HP | | |
|---|------------------------------------|----|-----------------------------|-----|-------------|------|-----------------------------|------|-------------|------|-----------------------------|------|--|--|
| Motor (1) | Power indicated on rating plate | ND | 5.5 | 4 | 7.5 | 5.5 | 11 | 7.5 | 15 | 11 | 18.5 | 15 | | |
| | | HD | 7.5 | 5 | 10 | 7.5 | 15 | 10 | 20 | 15 | 25 | 20 | | |
| Easy Altivar 610 | Max. continuous output current (1) | | 12.7 | 9.3 | 15.8 | 12.7 | 23.5 | 16.5 | 31.7 | 23.5 | 39.2 | 31.7 | | |
| Dimensions: W x H x D (mm) | EMC plate not mounted (mm) | | 145 x 297 x 203 1 | | | | 171 x 360 x 233 2 | | | | 211 x 495 x 232 3 | | | |
| Reference | | | ATV610U55N4 | | ATV610U75N4 | | ATV610D11N4 | | ATV610D15N4 | | ATV610D18N4 | | | |

| ND: Normal duty (2), HD: Heavy duty (3) | | | kW | HP | kW | HP | kW | HP | kW | HP | kW | HP | | |
|---|------------------------------------|----|-----------------------------|------|-------------|-----------------------------|-------------|------|-----------------------------|------|-------------|----|--|--|
| Motor (1) | Power indicated on rating plate | ND | 22 | 18.5 | 30 | 22 | 37 | 30 | 45 | 37 | 55 | 45 | | |
| | | HD | 30 | 25 | 40 | 30 | 50 | 40 | 60 | 50 | 75 | 60 | | |
| Easy Altivar 610 | Max. continuous output current (1) | | 46.3 | 39.2 | 61.5 | 46.3 | 74.5 | 59.6 | 88 | 74.5 | 106 | 88 | | |
| Dimensions: W x H x D (mm) | EMC plate not mounted (mm) | | 211 x 495 x 232 3 | | | 226 x 613 x 271 4 | | | 290 x 762 x 323 5 | | | | | |
| Reference | | | ATV610D22N4 | | ATV610D30N4 | | ATV610D37N4 | | ATV610D45N4 | | ATV610D55N4 | | | |

| ND: Normal duty (2), HD: Heavy duty (3) | | | kW | HP | kW | HP | kW | HP | kW | HP | kW | HP |
|---|------------------------------------|----|-----------------------------|-----|-------------|-----|-----------------------------|-----|-------------|-----|-------------|-----|
| Motor (1) | Power indicated on rating plate | ND | 75 | 55 | 90 | 75 | 110 | 90 | 132 | 110 | 160 | 132 |
| | | HD | 100 | 75 | 125 | 100 | 149 | 125 | 178 | 149 | 216 | 178 |
| Easy Altivar 610 | Max. continuous output current (1) | | 145 | 106 | 173 | 145 | 211 | 173 | 250 | 211 | 302 | 250 |
| Dimensions: W x H x D (mm) | EMC plate not mounted (mm) | | 290 x 762 x 323 5 | | | | 320 x 852 x 390 6 | | | | | |
| Reference | | | ATV610D75N4 | | ATV610D90N4 | | ATV610C11N4 | | ATV610C13N4 | | ATV610C16N4 | |

- (1) These values are given for a nominal switching frequency of 4 kHz up to ATV610D45N4, or 2.5 kHz for ATV610D55N4...C16N4 for use in continuous operation. The switching frequency is adjustable from 2...12 kHz up to ATV610D45N4, or from 1...8 kHz for ATV610D55N4...C16N4. Above 2.5 or 4 kHz (depending on the rating), the drive will automatically reduce the switching frequency in the event of an excessive temperature rise. For continuous operation above the nominal switching frequency, derate the nominal drive current (see the derating curves on our website).
- (2) Values given for applications requiring a slight overload (up to 110 % for 60 s or 120% for 20 s).
- (3) Values given for applications requiring a slight overload (up to 150 % for 60 s).
- (4) With IP21 conformity kit.

Easy Altivar 610 - Accessories for mounting of variable speed drives



| Kit for IP 21 conformity | | |
|------------------------------------|----|----------------------|
| For use with variable speed drives | | ATV610C11N4... C16N4 |
| Power | kW | 110...160 |
| | HP | 149...216 |
| Reference | | VW3A9704 |

Easy Altivar 610 - Configuration and runtime tools, Communication buses and networks



Plain text display terminal

| | |
|----------------------|--------------------------|
| Degree of protection | IP21 |
| Display type | Backlit LCD screen white |
| Pixel resolution | 128 x 64 |
| Reference | VW3A1113 |



Remote mounting kit

| | | | | | | |
|----------------------|---|---|---|--------------------|--------------------|---------------------|
| Type of product | Remote mounting kit for plain text display terminal 1 | Tightening tool for remote mounting kit 2 | Remote mounting cordset (equipped with 2 RJ45 connectors) 3 | | | |
| Degree of protection | IP20 | – | – | – | – | – |
| Length (m) | – | – | 1 | 3 | 5 | 10 |
| Connector type | – | – | RJ45 | | | |
| Reference | VW3A1114 | ZB5AZ905 | VW3A1104R10 | VW3A1104R30 | VW3A1104R50 | VW3A1104R100 |



I/O modules (option)

| | | | |
|-----------|-----------------|-----------------|-----------------|
| I/O type | Digital inputs | 6 | – |
| | Digital outputs | 2 | – |
| | Analog inputs | 2 (1) | – |
| | Relay outputs | – | 3 (2) |
| Reference | | VW3A3203 | VW3A3204 |

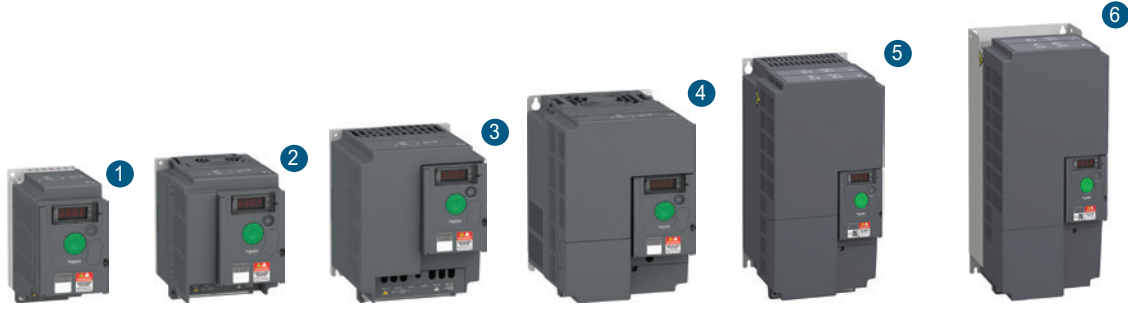


PROFIBUS DP V1 optional communication module

| | |
|-----------------------|------------------------------------|
| Electrical connection | 1 female connector SUB-D 9 |
| Transmission rate | 9.6 kbps...12 Mbps |
| Display type | 1 LED for RUN, 1 LED for bus fault |
| Bus profile | PROFIdrive, CiA 402 |
| Reference | VW3A3607 |

(1) Differential analog inputs configurable via software as current (0-20 mA/4-20 mA) or probe (PTC, PT100, or 2-wire or 3-wire PT1000) inputs. When configured as PTC probe inputs, they must never be used to protect an ATEX motor in applications in explosive atmospheres. Please refer to the "ATEX guide" on our website.
(2) NO contacts.

Easy Altivar 310 - IP 20 drives (380...460 V 50/60 Hz)



Three-phase supply voltage: 380...460 V 50/60 Hz, without EMC filter

| | | | | | | | | |
|----------------------------|-------------------------------------|----|----|---------------------|---------------------|----------------------|----------------------|----------------------|
| Motor | Power indicated on rating plate (1) | HD | kW | 0.37 | 0.75 | 1.5 | 2.2 | 3 |
| | | HP | | 0.5 | 1 | 2 | 3 | 4 |
| Easy Altivar 310 | Max. continuous output current (1) | HD | kW | 1.5 | 2.3 | 4.1 | 5.5 | 7.1 |
| | | ND | HP | | | | | 8.9 |
| Dimensions: W x H x D (mm) | | | | 72 x 143 x 130 1 | 72 x 143 x 140 1 | 105 x 143 x 151 2 | 105 x 143 x 151 2 | 140 x 184 x 151 3 |
| Reference | | | | ATV310H037N4E | ATV310H075N4E | ATV310HU15N4E | ATV310HU22N4E | ATV310HU30N4E |

| | | | | | | | | | | |
|----------------------------|---------------------------------|----|----|----------------------|----------------------|----------------------|----------------------|----------------------|----------------------|----------------------|
| Motor | Power indicated on rating plate | HD | kW | 4 | 5.5 | 7.5 | 11 | 15 | 18.5 | 22 |
| | | HP | | 5 | 7.5 | 10 | 15 | 20 | 25 | 30 |
| Easy Altivar 310 | Max. continuous output current | HD | kW | 5.5 | 7.5 | 11 | 15 | 18.5 | 22 | 30 |
| | | ND | HP | 7.5 | 10 | 15 | 20 | 25 | 30 | 40 |
| Dimensions: W x H x D (mm) | | | | 140 x 184 x 151 3 | 140 x 184 x 151 3 | 150 x 232 x 171 4 | 150 x 232 x 171 4 | 180 x 330 x 191 5 | 180 x 330 x 191 5 | 180 x 390 x 212 6 |
| Reference | | | | ATV310HU40N4E | ATV310HU55N4E | ATV310HU75N4E | ATV310HD11N4E | ATV310HD15N4E | ATV310HD18N4E | ATV310HD22N4E |

(1) These values are given for a nominal switching frequency of 4 kHz, for use in continuous operation. If operation above 4 kHz needs to be continuous, the nominal drive current should be derated by 10% for 8 kHz and 20% for 12 kHz.

Three-phase supply voltage: 380...460 V 50/60 Hz, with C3 EMC filter

| | | | | | | |
|----------------------------|---------------------------------|----|----|----------------------|----------------------|----------------------|
| Motor | Power indicated on rating plate | HD | kW | 15 | 18.5 | 22 |
| | | HP | | 20 | 25 | 30 |
| Easy Altivar 310 | Max. continuous output current | HD | kW | 18.5 | 22 | 30 |
| | | ND | HP | 25 | 30 | 40 |
| Dimensions: W x H x D (mm) | | | | 180 x 330 x 191 5 | 180 x 330 x 191 5 | 180 x 390 x 212 6 |
| Reference | | | | ATV310HD15N4EF | ATV310HD18N4EF | ATV310HD22N4EF |

(1) These values are given for a nominal switching frequency of 4 kHz, for use in continuous operation. If operation above 4 kHz needs to be continuous, the nominal drive current should be derated, for details please refer to user manual.



Easy Altivar 310 - Configuration tools



Simple Loader, Multi-Loader configuration tools and associated cable

| | | |
|------------------------|--|---|
| Description | Simple Loader tool 7 For duplicating one drive configuration on another drive. The drives must be powered-up. | Multi-Loader tool 8 For copying a configuration on a PC or drive and duplicating it on another drive. The drives do not need to be powered-up. |
| Kit composition | Simple loader tool 1 cordset with 2 connectors RJ45 | Multi loader tool 1 adaptor RJ45 female/female 4 batteries AA/LR6 1.5 V 1 cordset with 2 connectors RJ45 1 memory card SD 2 Go 1 cordset with 1 connector USB type A and 1 connector USB type mini B |
| For use with | ATV310H●●●N4E | ATV310H●●●N4E |
| Reference | VW3A8120 | VW3A8121 |

Remote display terminals and associated cordsets

| | | | | |
|-----------------------------------|---|-----------------|---|---------------------|
| Description | Remote display terminals 9 For fixing the Human-Machine interface on an enclosure door with IP 54 or IP 65 degree of protection. A remote-fixing cordset VW3A1104R●● is also required. | | Remote-fixing cordsets 10 Equipped with 2 RJ45 connectors. For connecting the VW3 A1006 or VW3A1007 remote display terminal to the Easy Altivar 310 drive. | |
| For use with | ATV310H●●●N4E | ATV310H●●●N4E | ATV310H●●●N4E | ATV310H●●●N4E |
| Degree of protection | IP 54 | IP 65 | – | – |
| Dimensions: W x H x D (mm) | 50 x 70 x 22.7 | 66 x 106 x 26.7 | Length: 1 m/3.28 ft | Length: 3 m/9.84 ft |
| Reference | VW3A1006 | VW3A1007 | VW3A1104R10 | VW3A1104R30 |

3

Easy Altivar 310 - line chokes, motor chokes and LR filter cells



| Line chokes | | | | | | | |
|----------------------------|----|-------|----------------|---------------|----------------|---------------|---------------|
| For use with | | | ATV310H037N4E | ATV310H075N4E | ATV310HU15N4E | ATV310HU22N4E | ATV310HU30N4E |
| Line current with choke | HD | 380 V | 1.1 | 1.9 | 3.5 | 5.1 | 6.6 |
| | | 460 V | 1 | 1.7 | 2.9 | 4.4 | 5.6 |
| | ND | 380 V | | | | | 8.5 |
| | | 460 V | | | | | 7.1 |
| Line current without choke | HD | 380 V | 2.1 | 3.5 | 6.5 | 8.8 | 11.1 |
| | | 460 V | 1.8 | 3.1 | 5.4 | 7.2 | 9.2 |
| | ND | 380 V | | | | | 14.2 |
| | | 460 V | | | | | 11.6 |
| Dimensions: W x H x D (mm) | | | 100 x 135 x 60 | | 130 x 155 x 90 | | |
| Reference | | | VW3A4551 | | VW3A4552 | | |

| | | | | | | | |
|----------------------------|----|-------|----------------|---------------|-----------------|---------------|---------------|
| For use with | | | ATV310HU40N4E | ATV310HU55N4E | ATV310HU75N4E | ATV310HD11N4E | ATV310HD15N4E |
| Line current with choke | HD | 380 V | 8.5 | 11.6 | 16.1 | 22 | 28.9 |
| | | 460 V | 7.7 | 9.9 | 14.2 | 18.3 | 24.4 |
| | ND | 380 V | 11.6 | 15.3 | 22.2 | 29.9 | 29 |
| | | 460 V | 9.9 | 12.8 | 18.8 | 25 | 29 |
| Line current without choke | HD | 380 V | 13.7 | 21.3 | 26.6 | 36.1 | 46.5 |
| | | 460 V | 11.4 | 14.3 | 22.4 | 30.4 | 38.5 |
| | ND | 380 V | 18 | 23 | 29.5 | 38.6 | 46.6 |
| | | 460 V | 14.9 | 19 | 24.8 | 32.5 | 38.8 |
| Dimensions: W x H x D (mm) | | | 130 x 155 x 90 | | 155 x 170 x 135 | | |
| Reference | | | VW3A4553 | | VW3A4554 | | |

| | | | | | | | |
|----------------------------|----|-------|-----------------|-----------------|-----------------|-----------------|-----------------|
| For use with | | | ATV310HD18N4E | ATV310HD22N4E | ATV310HD15N4EF | ATV310HD18N4EF | ATV310HD22N4EF |
| Line current with choke | HD | 380 V | 36.4 | 42.4 | 28.9 | 36.4 | 42.4 |
| | | 460 V | 31.6 | 36.3 | 24.4 | 31.6 | 36.3 |
| | ND | 380 V | 41.8 | 57.2 | 29 | 41.8 | 57.2 |
| | | 460 V | 35.3 | 48.3 | 29 | 35.3 | 48.3 |
| Line current without choke | HD | 380 V | 55.3 | 64.2 | 46.5 | 55.3 | 64.2 |
| | | 460 V | 45.8 | 53.2 | 38.5 | 45.8 | 53.2 |
| | ND | 380 V | 54.1 | 71.2 | 46.6 | 54.1 | 71.2 |
| | | 460 V | 45.1 | 59.2 | 38.8 | 45.1 | 59.2 |
| Dimensions: W x H x D (mm) | | HD | 180 x 210 x 160 | 180 x 210 x 160 | 155 x 170 x 135 | 180 x 210 x 160 | 180 x 210 x 160 |
| | | ND V | | 270 x 210 x 180 | | | 270 x 210 x 180 |
| Reference | | HD | VW3A4555 | VW3A4555 | VW3A4554 | VW3A4555 | VW3A4555 |
| | | ND V | - | VW3A4556 | - | - | VW3A4556 |

| Motor chokes | | | | | | |
|----------------------------|----------------|---------------|----------------|-----------------|---------------|---------------|
| For use with | | ATV310H037N4E | ATV310H075N4E | ATV310HU15N4E | ATV310HU22N4E | ATV310HU30N4E |
| HD and ND | HD | | | HD | | HD/ND |
| Losses (W) | 45 | | | 65 | | |
| Nominal current (A) | 4 | | | 10 | | |
| Dimensions: W x H x D (mm) | 100 x 135 x 60 | | | 130 x 155 x 90 | | |
| Reference | VW3A4551 | | | VW3A4552 | | |
| For use with | | ATV310HU40N4E | ATV310HU55N4E | ATV310HU75N4E | ATV310HD11N4E | |
| HD and ND | HD/ND | | HD/ND | HD/ND | | |
| Losses (W) | 75 | | 75 | 90 | | |
| Nominal current (A) | 17 | | 17 | 31 | | |
| Dimensions: W x H x D (mm) | 130 x 155 x 90 | | 130 x 155 x 90 | 155 x 170 x 135 | | |
| Reference | VW3A4553 | | VW3A4553 | VW3A4554 | | |

Motor chokes

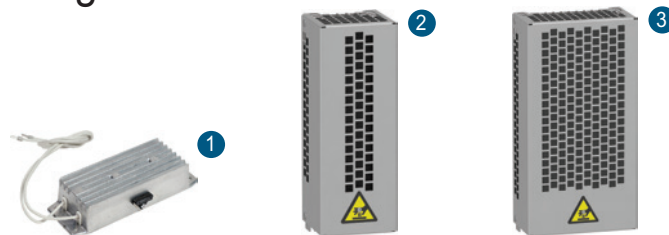
| For use with | ATV310HD15N4E(F) | ATV310HD18N4E(F) | ATV310HD22N4E(F) | |
|----------------------------|------------------|------------------|------------------|-----------------|
| HD and ND | HD/ND | | HD | ND |
| Losses (W) | 94 | | 94 | 260 |
| Nominal current (A) | 60 | | 60 | 107 |
| Dimensions: W x H x D (mm) | 180 x 210 x 160 | | 180 x 210 x 160 | 270 x 210 x 180 |
| Reference | VW3A4555 | | VW3A4555 | VW3A4556 |

LR filter cell

| | |
|----------------------------|-------------------------|
| For use with | ATV310H037N4E...HU15N4E |
| Losses (W) | 150 |
| Nominal current (A) | 10 |
| Dimensions: W x H x D (mm) | 169.5 x 340 x 123 |
| Reference | VW3A58451 |

3

Easy Altivar 310 - Braking resistors



Braking resistors

Not protected resistor (IP00) (1)

| For use with | ATV310HU15N4E | ATV310HU22N4E | ATV310HU30N4E | ATV310HU40N4E |
|-----------------------------------|---------------|---------------|---------------|---------------|
| Minimum Ohmic value (W) | 80 | 60 | 36 | 36 |
| Ohmic value at 20° C (W) | 100 | | 100 | |
| Power available at 50° C (kW) (2) | 0.028 | | 0.035 | |
| Dimensions: W x H x D (mm) | 60 x 170 x 30 | | 62 x 212 x 36 | |
| Reference | VW3A7723 ① | | VW3A7725 ① | |

Protected resistor (IP20 or 23)

| For use with | ATV310HU15N4E | ATV310HU22N4E | ATV310HU30N4E | ATV310HU40N4E |
|-----------------------------------|-----------------|---------------|---------------|---------------|
| Minimum Ohmic value (W) | 80 | 60 | 36 | 36 |
| Ohmic value at 20° C (W) | 100 | | | |
| Power available at 50° C (kW) (2) | 0.1 | | | |
| Dimensions: W x H x D (mm) | 105 x 295 x 100 | | | |
| Reference | VW3A7730 ② | | | |

Protected resistor (IP20 or 23)

| For use with | ATV310HU55N4E | ATV310HU75N4E | ATV310HD11N4E | ATV310HD15N4E |
|-----------------------------------|-----------------|---------------|-----------------|-----------------|
| Minimum Ohmic value (W) | 28 | 28 | 28 | 16 |
| Ohmic value at 20° C (W) | 60 | | 28 | 16 |
| Power available at 50° C (kW) (2) | 0.16 | | 0.3 | 0.96 |
| Dimensions: W x H x D (mm) | 105 x 345 x 100 | | 175 x 345 x 100 | 190 x 570 x 180 |
| Reference | VW3A7731 ② | | VW3A7732 ③ | VW3A7733 |

Protected resistor (IP20 or 23)

| For use with | ATV310HD18N4E | ATV310HD22N4E | ATV310HD15N4EF | ATV310HD18N4EF | ATV310HD22N4EF |
|-----------------------------------|-----------------|---------------|----------------|----------------|----------------|
| Minimum Ohmic value (W) | 10 | 10 | 16 | 10 | 10 |
| Ohmic value at 20° C (W) | 16 | | | | |
| Power available at 50° C (kW) (2) | 0.96 | | | | |
| Dimensions: W x H x D (mm) | 190 x 570 x 180 | | | | |
| Reference | VW3A7733 | | | | |

(1) For not protected resistors, add a thermal overload device.

(2) Load factor for resistors: the value of the average power that can be dissipated at 50 °C from the resistor into the casing is determined for a load factor during braking that corresponds to the majority of normal applications.

For VW3A7730...7733:

- 2 s braking with a 0.6 T_n braking torque for a 40 s cycle

- 0.8 s braking with a 1.5 T_n braking torque for a 40 s cycle

Easy Altivar 310 - Modbus serial link



Modbus serial link

Connection via splitter box and RJ45 connectors

| Description | Modbus splitter box ¹ 10 RJ45 connectors and 1 screw terminal | Cordsets for Modbus serial link ² equipped with 2 RJ45 connectors | | |
|-------------|---|---|-------------|-------------|
| Length (m) | – | 0.3 | 1 | 3 |
| Reference | LU9GC3 | VW3A8306R03 | VW3A8306R10 | VW3A8306R30 |

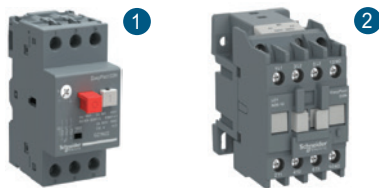


| Description | Modbus T-junction boxes ³ (with integrated cable) | | Line terminators ⁽¹⁾ ⁽²⁾ ⁴ For RJ45 connector | |
|-------------|---|--------------|---|-----------|
| Length (m) | 0.3 | 1 | – | – |
| Reference | VW3A8306TF03 | VW3A8306TF10 | VW3A8306RC | VW3A8306R |

(1) Depends on the bus architecture.

(2) Order in multiples of two.

Easy Altivar 310 - Motor starters



| Motor starters - Three-phase supply voltage, 380...460 V 50/60 Hz (2) | | | | | | | |
|---|--|---------------|---------------|---------------|------------------|------------------|------------------|
| Standard power ratings | kW | 0.37 | 0.75 | 1.5 | 2.2 | 3 | 4 |
| | HP | 0.5 | 1 | 2 | 3 | 4 | 5.4 |
| Variable speed drive | | ATV310H037N4E | ATV310H075N4E | ATV310HU15N4E | ATV310HU22N4E | ATV310HU30N4E | ATV310HU40N4E |
| Combination with control circuit | ¹ TeSys motor circuit-breaker (3) | GZ1LE07 | GZ1LE08 | GZ1LE14 | GZ1LE14 | GZ1LE16 | GZ1LE20 |
| | Operating range | 2.5 | 4 | 10 | 10 | 14 | 18 |
| | ² TeSys contactor (1) | LC1E06●●●● | LC1E06●●●● | LC1E09●●●● | LC1E09●●●● | LC1E18●●●● | LC1E18●●●● |
| Standard power ratings | kW | 5.5 | 7.5 | 11 | 15 | 18.5 | 22 |
| | HP | 7.4 | 10 | 15 | 20 | 25 | 30 |
| Variable speed drive | | ATV310HU55N4E | ATV310HU75N4E | ATV310HD11N4E | ATV310HD15N4E(F) | ATV310HD18N4E(F) | ATV310HD22N4E(F) |
| Combination with control circuit | ¹ TeSys motor circuit-breaker (3) (4) | GZ3LE25 | GZ3LE32 | GZ3LE40 | GZ3LE50 | GZ3LE65 | GZ3LE73 |
| | Operating range | 25 | 32 | 40 | 50 | 60 | 73 |
| | ² TeSys contactor (1) | LC1E25●●●● | LC1E32●●●● | LC1E40●● | LC1E50●● | LC1E65●● | LC1E80●● |

(1) For a complete list of references for TeSys contactors, please visit our local website.

(2) Motor power indicated for combination with an ATV310H●●●N4E drive with the same rating.

(3) TeSys motor circuit-breakers:

- GZ1N●●: Thermal magnetic motor circuit-breakers with pushbutton control

- CVS●●: Molded-case circuit breakers with adjustable setting.

(4) Not released yet, will be available soon.



04. Easy Harmony Electromechanical Relays

Easy Harmony RXM electromechanical relays



Easy Harmony RXM miniature plug-in relays

| Type | | With LED - Miniature relays without lockable test-button | |
|--|---------|--|-----------|
| Contact | | 2 CO | 4 CO |
| Enclosed Thermal Current (Ithe) | | 5 A | 3 A |
| Complete product | 12 VDC | RXM2LB2JD | RXM4LB2JD |
| | 24 VDC | RXM2LB2BD | RXM4LB2BD |
| | 36 VDC | - | RXM4LB2CD |
| | 48 VDC | RXM2LB2ED | RXM4LB2ED |
| | 110 VDC | RXM2LB2FD | RXM4LB2FD |
| | 24 VAC | RXM2LB2B7 | RXM4LB2B7 |
| | 120 VAC | RXM2LB2F7 | RXM4LB2F7 |
| | 230 VAC | RXM2LB2P7 | RXM4LB2P7 |

| Type | | Without LED - Miniature relays without lockable test-button | |
|--|---------|---|-----------|
| Contact | | 2 CO | 4 CO |
| Enclosed Thermal Current (Ithe) | | 5 A | 3 A |
| Complete product | 12 VDC | RXM2LB1JD | RXM4LB1JD |
| | 24 VDC | RXM2LB1BD | RXM4LB1BD |
| | 24 VAC | RXM2LB1B7 | RXM4LB1B7 |
| | 120 VAC | RXM2LB1F7 | RXM4LB1F7 |
| | 230 VAC | RXM2LB1P7 | RXM4LB1P7 |

4



| | | |
|---------------------------|----------|------------|
| For use with | RXM2 | RXM2, RXM4 |
| Screw clamp socket | RXZE1M2C | RXZE1M4C |



| | | |
|--------------------------------|----------|----------|
| For use with | RXZE1M●C | RXZE1M2C |
| Metal maintaining clamp | RXZ410 | RXZ420 |

Note: If the protection module is needed, please use RXZE● sockets with the associated protection module RXM0. You can find more details in [Harmony Electromechanical Relays catalog - RXM●AB range section](#).

A man in a grey shirt is shown in profile, interacting with a control panel on a machine. The panel features a red emergency stop button and a black control unit with a red light. The background is a factory floor with glass safety enclosures and industrial equipment. A green horizontal bar is overlaid on the image.

05. Easy Modicon power supplies

Easy Modicon ABL2K power supplies and Accessories



ABL2 regulated switch mode 24 V DC power supplies 1

| | | | | |
|--------------------------------------|----------------------|----------------------|-----------------------|-----------------------|
| Cooling design | Natural convection | | | |
| Automatic protect reset | | | | |
| Voltage switching | Automatic | | | |
| Input Voltage single-phase (47~63Hz) | 100...240 VAC | | | |
| Output Voltage | 24 V DC | | | |
| Power (W) | 35 | | 50 | |
| Output current (A) | 1.5 | | 2.2 | |
| Overload hiccup protection (%) | 110-160 | | 170-190 | |
| Reference | ABL2REM24015K | ABL2REM24020K | ABL2REM24015KQ | ABL2REM24020KQ |

| | | | | |
|--------------------------------------|----------------------|----------------------|------------------------------|-----------------------|
| Cooling design | Natural convection | | | |
| Automatic protect reset | | | | |
| Voltage switching | Automatic | | Manual | |
| Input Voltage single-phase (47~63Hz) | 100...240 VAC | | 100...120 VAC, 200...240 VAC | |
| Output Voltage | 24 V DC | | | |
| Power (W) | 100 | | 150 | |
| Output current (A) | 4.5 | | 6.5 | |
| Overload hiccup protection (%) | 110-160 | | 170-190 | |
| Reference | ABL2REM24045K | ABL2REM24065K | ABL2REM24045KQ | ABL2REM24065KQ |

| | | | | |
|--------------------------------------|------------------------------|----------------------|---------------------------------------|--|
| Cooling design | Natural convection | | Forced air cooling by built-in DC fan | |
| Automatic protect reset | | | | |
| Voltage switching | Manual | | | |
| Input Voltage single-phase (47~63Hz) | 100...120 VAC, 200...240 VAC | | | |
| Output Voltage | 24 V DC | | | |
| Power (W) | 200 | 250 | 350 | |
| Output current (A) | 8.3 | 10.5 | 14.6 | |
| Overload hiccup protection (%) | 110-150 | | | |
| Reference | ABL2REM24085K | ABL2REM24100K | ABL2REM24150K | |



Options for ABL2 power supplies

| | | | | |
|----------------------------|---|---|--|---|
| Type of mounting accessory | 4-corner bracket 2 | Clip-on mounting plate 3 | L-type accessories 4 | |
| Description | For direct mounting on back panel. Mounting screws not provided. Recommended use: M4 (6 mm/0.24 in) or M4 (8 mm/0.31 in) screws | For mounting on 35 mm (1.37 in.) DIN rail | Size: Small L | Size: Big L |
| For power supplies | ABL2REM24085K, ABL2REM24100K, ABL2REM24150K | All models | ABL2REM24015K, ABL2REM24015KQ, ABL2REM24020K, ABL2REM24020KQ, ABL2REM24045K, ABL2REM24045KQ, ABL2REM24065K, ABL2REM24065KQ | ABL2REM24085K, ABL2REM24100K, ABL2REM24150K |
| Sold in lots of | 40 | 5 (1) | 1 | 1 |
| Reference | ABL2K01 | ABL2K02 | ABL2K03A | ABL2K03B |

(1) ABL2K02 is a pack of 5 accessories usable on 35 mm (1.37 in.) L-rails. Please note that only 1 accessory is necessary for mounting a 35 to 150 W model but 2 accessories are needed for the other three models (200, 250, and 350 W).



06. Easy Lexium Motion Control

Easy Lexium 16D Motion control



Lexium 16D servo drives and BCH16 servo motors combinations - Single-phase supply voltage: 200/230 VAC

| | | | | | |
|--|-------------------------|------------------------------|------------------|------------------------------|------------------|
| Power output (kW) | | 0.1 | | 0.2 | |
| Dimensions: W x H x D (mm) | | 52 x 150 x 155.2 | | 52 x 150 x 155.2 | |
| Nominal speed of rotation (min-1) | | 3000 | | 3000 | |
| Nominal torque (N.m) | | 0.32 | | 0.64 | |
| With holding brake | | No | Yes | No | Yes |
| Inertia -without holding brake (kg.cm ²) | | 0.041 | 0.047 | 0.42 | 0.48 |
| Motor inertia type | | Low | | High | |
| Reference | Servo drive reference ① | LXM16DU01M2X LXM16MU01M2X | | LXM16DU02M2X LXM16MU02M2X | |
| | Servo motor reference ② | BCH16LB01330A5C2 | BCH16LB01330F5C2 | BCH16HD02330A5C2 | BCH16HD02330F5C2 |
| | | BCH16LB01332A5C2 | BCH16LB01332F5C2 | BCH16HD02332A5C2 | BCH16HD02332F5C2 |

| | | | | | |
|--|-------------------------|------------------------------|------------------|------------------------------|------------------|
| Power output (kW) | | 0.4 | | 0.75 | |
| Dimensions: W x H x D (mm) | | 52 x 150 x 155.2 | | 65 x 150 x 185.2 | |
| Nominal speed of rotation (min-1) | | 3000 | | 3000 | |
| Nominal torque (N.m) | | 1.27 | | 2.39 | |
| With holding brake | | No | Yes | No | Yes |
| Inertia -without holding brake (kg.cm ²) | | 0.67 | 0.73 | 1.51 | 1.64 |
| Motor inertia type | | Low | | High | |
| Reference | Servo drive reference ① | LXM16DU04M2X LXM16MU04M2X | | LXM16DU07M2X LXM16MU07M2X | |
| | Servo motor reference ② | BCH16HD04330A5C2 | BCH16HD04330F5C2 | BCH16HF07330A5C2 | BCH16HF07330F5C2 |
| | | BCH16HD04332A5C2 | BCH16HD04332F5C2 | BCH16HF07332A5C2 | BCH16HF07332F5C2 |

| | | | | | |
|--|-------------------------|------------------------------|------------------|------------------------------|------------------|
| Power output (kW) | | 1 | | 1 | |
| Dimensions: W x H x D (mm) | | 65 x 150 x 185.2 | | 65 x 150 x 185.2 | |
| Nominal speed of rotation (min-1) | | 3000 | | 3000 | |
| Nominal torque (N.m) | | 3.18 | | 3.18 | |
| With holding brake | | No | Yes | No | Yes |
| Inertia -without holding brake (kg.cm ²) | | 1.24 | 1.37 | 2.65 | 2.75 |
| Motor inertia type | | Low | | Low | |
| Reference | Servo drive reference ① | LXM16DU10M2X LXM16MU10M2X | | LXM16DU10M2X LXM16MU10M2X | |
| | Servo motor reference ② | BCH16LF10330A5C2 | BCH16LF10330F5C2 | BCH16LH10330A6C2 | BCH16LH10330F6C2 |
| | | BCH16LF10332A5C2 | BCH16LF10332F5C2 | BCH16LH10332A6C2 | BCH16LH10332F6C2 |

| | | | | | |
|--|-------------------------|--------------------------------------|--|--------------------------------------|--|
| Power output (kW) | | 1 | | | |
| Dimensions: W x H x D (mm) | | 65 x 150 x 185.2 | | | |
| Nominal speed of rotation (min-1) | | 2000 | | | |
| Nominal torque (N.m) | | 3.18 | | | |
| With holding brake | | No | | Yes | |
| Inertia -without holding brake (kg.cm ²) | | 10.88 | | 11.58 | |
| Motor inertia type | | High | | | |
| Reference | Servo drive reference ① | LXM16DU10M2X LXM16MU10M2X | | | |
| | Servo motor reference ② | BCH16HM10230A6C2 BCH16HM10232A6C2 | | BCH16HM10230F6C2 BCH16HM10232F6C2 | |

| | | | | | |
|--|-------------------------|------------------------------|------------------|------------------------------|------------------|
| Power output (kW) | | 0.85 | | 1.5 | |
| Dimensions: W x H x D (mm) | | 65 x 150 x 185.2 | | 65 x 150 x 185.2 | |
| Nominal speed of rotation (min-1) | | 1500 | | 2000 | |
| Nominal torque (N.m) | | 5.39 | | 7.16 | |
| With holding brake | | No | Yes | No | Yes |
| Inertia -without holding brake (kg.cm ²) | | 14.08 | 14.78 | 14.8 | 15.5 |
| Motor inertia type | | High | | High | |
| Reference | Servo drive reference ① | LXM16DU15M2X LXM16MU15M2X | | LXM16DU15M2X LXM16MU15M2X | |
| | Servo motor reference ② | BCH16HM08130A6C2 | BCH16HM08130F6C2 | BCH16HM15230A6C2 | BCH16HM15230F6C2 |
| | | BCH16HM08132A6C2 | BCH16HM08132F6C2 | BCH16HM15232A6C2 | BCH16HM15232F6C2 |



Easy Lexium 16D Motion control - Connection accessories



| Connectors | | | |
|---------------------|--|--|--|
| Designation | SCSI-26 connector for creating control cordsets (CN1) 1 | Connector for connection of power supply, external braking resistor and motor power output (CNP) 2 | 10-pin connector for creating encoder cordsets (CN2) For cable crossection: 2*0.5 mm ² + 3 x 2 x 0.2 mm ² 3 |
| Description | 1 x SCSI-26 connector 1 x shielded chassis 1 x connector housing 2 x screw for fix to connection port 2 x screw for connector housing | 1 x connector | 1 x IEEE1394 10-pin connector 1 x shielded chassis 1 x connector housing 2 x spring clamp for fix to connection port |
| For use with | LXM16DU01M2X, LXM16DU02M2X, LXM16DU04M2X, LXM16DU07M2X, LXM16DU10M2X, LXM16DU15M2X LXM16MU01M2X, LXM16MU02M2X, LXM16MU04M2X, LXM16MU07M2X, LXM16MU10M2X, LXM16MU15M2X | | |
| Reference | VW3M4A11 | VW3M4A21 | VW3M4A31 |



| Control cordsets and Power cordset kit | | | |
|--|--|---|---|
| Designation | Pre-assembled control cordsets dedicated to 24VDC pulse train with interface module (CN1) | Pre-assembled control cordsets dedicated to 3.3 VDC pulse train with interface module (CN1) | Power cordset shield connection plate |
| Description | 1 x pre-assembled control cordsets (Length: 1 m/3.28 ft.) 1 x interface module | 1 x pre-assembled control cordsets (Length: 1 m/3.28 ft.) 1 x interface module | 1 x grounding chassis 1 x spring clamp connector |
| For use with | LXM16DU01M2X, LXM16DU02M2X, LXM16DU04M2X, LXM16DU07M2X, LXM16DU10M2X, LXM16DU15M2X LXM16MU01M2X, LXM16MU02M2X, LXM16MU04M2X, LXM16MU07M2X, LXM16MU10M2X, LXM16MU15M2X | | |
| Reference | VW3M4A12 | VW3M4A15 | VW3M2A31 |

6



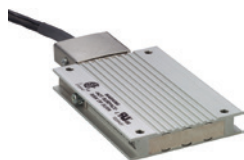
| Programming cables | |
|--------------------|--|
| Designation | Programming cables |
| Description | Transferring a configuration from a PC to the Lexium 16D servo drive via the CN3 interface (USB mini-B) on Lexium 16D servo drives |
| Length (m) | 3 1.8 |
| Reference | TCSXCNAMUM3P (1) BMXXCAUSBH018 |

(1) Unshielded, non-grounded cable. Only for use on temporary connections. For permanent connections, use cable reference BMXXCAUSBH018.



| Modbus TCP network cordsets | | | | | | | | | |
|-----------------------------|--|---------------------|---------------------|--|---------------------|---|----------------------|----------------------|--|
| Designation | Straight shielded twisted pair cordsets (conforming to EIA/TIA-568, category 5 and IEC1180/EN50173, class D standards) | | | Crossed shielded twisted pair cordsets | | Straight shielded twisted pair cordsets (conforming to UL and CSA 22.1 standards) | | | Crossed shielded twisted pair cordsets |
| Description | 2 RJ45 connectors | | | | | | | | |
| Length (m) | 2 | 5 | 12 | 5 | 15 | 2 | 5 | 15 | 5 |
| Reference | 490NT-W00002 | 490NT-W00005 | 490NT-W00012 | 490NT-C00005 | 490NT-C00015 | 490NT-W00002U | 490NT-W00005U | 490NT-W00012U | 490NT-C00005U |

Easy Lexium 16D Motion control - External braking resistor



| External braking resistors | | | | | |
|----------------------------------|----------------------|--|-------------|-------------|-------------|
| For use with Servo drives | | LXM16DU07M2X, LXM16DU10M2X, LXM16DU15M2X LXM16MU07M2X, LXM16MU10M2X, LXM16MU15M2X | | | |
| Ohmic value (W) | | 27 | | | |
| Continuous power (PPr) | | 100 | 200 | 400 | |
| Peak energy (EPk) | 115 V (Ws) | 4,200 | 9,700 | 25,500 | |
| | 230 V (Ws) | 3,800 | 7,400 | 18,100 | |
| | 400 V (Ws) | 1,900 | 4,900 | 11,400 | |
| | 480 V (Ws) | 1,900 | 4,300 | 10,500 | |
| Reference | Connection cable (m) | 0.75 | VW3A7602R07 | VW3A7603R07 | VW3A7604R07 |
| | | 2 | VW3A7602R20 | VW3A7603R20 | VW3A7604R20 |
| | | 3 | – | VW3A7603R30 | VW3A7604R30 |

| | | | | | | |
|----------------------------------|----------------------|--|-------------|-------------|-------------|-------------|
| For use with Servo drives | | LXM16DU01M2X, LXM16DU02M2X, LXM16DU04M2X, LXM16DU07M2X, LXM16DU10M2X, LXM16DU15M2X LXM16MU01M2X, LXM16MU02M2X, LXM16MU04M2X, LXM16MU07M2X, LXM16MU10M2X, LXM16MU15M2X | | | | |
| Ohmic value (W) | | 72 | | | 100 | |
| Continuous power (PPr) | | 100 | 200 | 400 | 100 | |
| Peak energy (EPk) | 115 V (Ws) | 5,500 | 14,600 | 36,600 | 4,400 | |
| | 230 V (Ws) | 3,700 | 9,600 | 24,700 | 4,400 | |
| | 400 V (Ws) | 2,500 | 6,600 | 16,200 | 2,900 | |
| | 480 V (Ws) | 2,300 | 6,000 | 15,500 | 2,900 | |
| Reference | Connection cable (m) | 0.75 | VW3A7605R07 | VW3A7606R07 | VW3A7607R07 | VW3A7608R07 |
| | | 2 | – | VW3A7606R20 | VW3A7607R20 | – |
| | | 3 | VW3A7605R30 | VW3A7606R30 | VW3A7607R30 | VW3A7608R30 |

Note: The total continuous power dissipated in the external braking resistor(s) must be less than or equal to the nominal power of the Lexium 16 servo drive.

Easy Lexium 16D Motion control - Additional EMC input filters



| Additional EMC filters | | |
|--|---|---|
| For servo drive | LXM16DU01M2X, LXM16DU02M2X, LXM16DU04M2X, LXM16MU01M2X, LXM16MU02M2X, LXM16MU04M2X | LXM16DU07M2X, LXM16DU10M2X, LXM16DU15M2X, LXM16MU07M2X, LXM16MU10M2X, LXM16MU15M2X |
| Maximum servo motor shielded cable length (1) | 25 | 25 |
| Reference | VW3A4420 | VW3A4421 |

(1) Conforming to EN 55011 class A Gr2, IEC/EN 61800-3 category C3 in environment 2. Switching frequency 8 kHz.

Easy Lexium 16D Motion control - Motor starters, Protection using class J fuses



| Motor starters - Combinations | | | | |
|-------------------------------|----------------------|--------------------------------|------------------------------|------------------------------|
| Servo drive | Nominal power (kW) | 0.1 | 0.2 | 0.4 |
| | Main number of phase | 1 | 1 | 1 |
| | Reference | ① LXM16DU01M2X LXM16MU01M2X | LXM16DU02M2X LXM16MU02M2X | LXM16DU04M2X LXM16MU04M2X |
| Circuit-breaker | Rating (A) | 10 | 10 | 10 |
| | Reference | ② GV2P14 | | |
| Contactor | Reference (1) (2) | ③ LC1K0610●● | | LC1K09●● |

| | | | | |
|-----------------|----------------------|--------------------------------|------------------------------|------------------------------|
| Servo drive | Nominal power (kW) | 0.75 | 1 | 1.5 |
| | Main number of phase | 1 | 1 | 1 |
| | Reference | ① LXM16DU07M2X LXM16MU07M2X | LXM16DU10M2X LXM16MU10M2X | LXM16DU15M2X LXM16MU15M2X |
| Circuit-breaker | Rating (A) | 10 | 10 | 14 |
| | Reference | ② GV2P14 | GV2P14 | GV2P16 |
| Contactor | Reference (1) (2) | ③ LC1K09●● | LC1K12●● | LC1D18●● |

(1) Composition of the contactors:
 LC1K0610●●: 3 poles + 1 N/O auxiliary contact
 LC1K09●●, LC1K12●●: 4 poles
 LC1D18●●: 3 poles + 1 N/O auxiliary contact + 1 N/C auxiliary contact
 Please refer to [Contractors and Protection Relays](#) page on our web site.

(2) Replace ●● with the control circuit voltage code given in the table below:

| | | | | |
|------|----------|-----------------|-------------|-----------------|
| LC1K | Volts ~ | 220 Volts ~ | 230 Volts ~ | 240 Volts ~ |
| | 50/60 Hz | M7 | P7 | U7 |
| LC1D | Volts ~ | 220/230 Volts ~ | 230 Volts ~ | 230/240 Volts ~ |
| | 50 Hz | M5 | P5 | U5 |
| | 60 Hz | M6 | – | U6 |
| | 50/60 Hz | M7 | P7 | U7 |

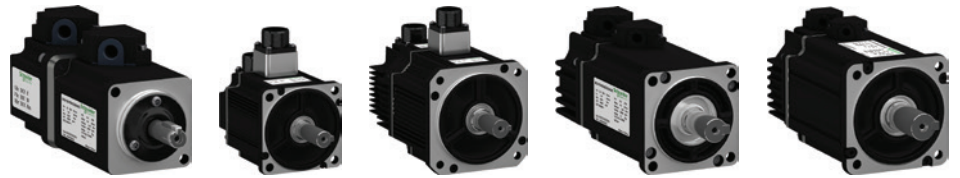
For other available voltages between 24 V and 660 V, or a DC control circuit, please contact our Customer Care Center

Protection using class J fuses (UL certification)

Mains supply voltage: 200...230 V a 50/60Hz

| Fuse to be placed upstream (A) | 5 | 5 | 20 | 20 | 25 | 40 | |
|--------------------------------|--------------------|------------------------------|------------------------------|------------------------------|------------------------------|------------------------------|------------------------------|
| Servo drive | Nominal power (kW) | 0.1 | 0.2 | 0.4 | 0.75 | 1 | 1.5 |
| | Reference | LXM16DU01M2X LXM16MU01M2X | LXM16DU02M2X LXM16MU02M2X | LXM16DU04M2X LXM16MU04M2X | LXM16DU07M2X LXM16MU07M2X | LXM16DU10M2X LXM16MU10M2X | LXM16DU15M2X LXM16MU15M2X |

Easy Lexium 16D Motion control - BCH16 servo motors



| BCH16 servo motors | | B | C | H | 16 | • | • | •• | • | • | • | • | • | C | 2 |
|--|--|---|---|---|----|---|---|----|---|---|---|---|---|---|---|
| Brushless servo motor | | | | | | | | | | | | | | | |
| Inertia | Low inertia | | | | | L | | | | | | | | | |
| | High inertia | | | | | H | | | | | | | | | |
| Flange size (mm) | 40 | | | | | | B | | | | | | | | |
| | 60 | | | | | | D | | | | | | | | |
| | 80 | | | | | | F | | | | | | | | |
| | 100 | | | | | | H | | | | | | | | |
| | 130 | | | | | | M | | | | | | | | |
| Rated output (W) | 100 | | | | | | | 01 | | | | | | | |
| | 200 | | | | | | | 02 | | | | | | | |
| | 400 | | | | | | | 04 | | | | | | | |
| | 750 | | | | | | | 07 | | | | | | | |
| | 850 | | | | | | | 08 | | | | | | | |
| | 1 kW | | | | | | | 10 | | | | | | | |
| | 1.5 kW | | | | | | | 15 | | | | | | | |
| Power supply ~ 220 V Winding type (rpm) | 1000/1500 | | | | | | | | 1 | | | | | | |
| | 2000 | | | | | | | | | 2 | | | | | |
| | 3000 | | | | | | | | | | 3 | | | | |
| Shaft end | Keyed shaft (shaft & housing IP 65) | | | | | | | | | 3 | | | | | |
| Encoder | 2500 ppr incremental encoder | | | | | | | | | | | 0 | | | |
| | 23 bit high resolution | | | | | | | | | | | | 2 | | |
| Holding brake | Without brake | | | | | | | | | | | | A | | |
| | With brake (option) | | | | | | | | | | | | | F | |
| Connections | Free leads with connectors (BCH16•B, BCH16•D, BCH16•F motors only) | | | | | | | | | | | | | 5 | |
| | MIL connectors (BCH16•H, BCH16•M, BCH16•R motors only) | | | | | | | | | | | | | | 6 |
| Mechanical motor design | Motor compatible with Asian style mounting standards | | | | | | | | | | | | | C | |
| Hardware Version | RS02 | | | | | | | | | | | | | | 2 |

Easy Lexium 16D Motion control - Connection components



Power cordsets - Shielded and Unshielded

| | | | | | | | | |
|--|----------------------------------|--|--------------|--------------|--------------|--------------|--------------|-------------|
| Designation | 1 | Equipped with one plastic connector (servo motor side), and a free lead (servo drive side) | | | | | | |
| For use | From servo drive | LXM16DU01M2X, LXM16DU02M2X, LXM16DU04M2X, LXM16DU07M2X LXM16MU01M2X, LXM16MU02M2X, LXM16MU04M2X, LXM16MU07M2X | | | | | | |
| | To servo motor | BCH16LB01330●5C2, BCH16HD02330●5C2, BCH16HD04330●5C2, BCH16HF07330●5C2, BCH16LF10330●5C2 BCH16LB01332●5C2, BCH16HD02332●5C2, BCH16HD04332●5C2, BCH16HF07332●5C2, BCH16LF10332●5C2 | | | | | | |
| For cable cross-section(mm²) | | 4G0.75 | | | | | | |
| Length (m) | | 1.5 | 3 | 5 | 10 | 15 | 20 | 25 |
| Reference | Unshielded power cordsets | VW3M5A11RA5 | VW3M5A11R03 | VW3M5A11R05 | VW3M5A11R10 | VW3M5A11R15 | VW3M5A11R20 | VW3M5A11R25 |
| | Shielded power cordsets | – | VW3M5A11R03S | VW3M5A11R05S | VW3M5A11R10S | VW3M5A11R15S | VW3M5A11R20S | – |

| | | | | | | | | |
|--|----------------------------------|--|-------------|-------------|--------------|--------------|--------------|--------------|
| Designation | 2 | Equipped with one MIL connector (servo motor side), and a free lead (servo drive side) | | | | | | |
| For use | From servo drive | LXM16DU10M2X, LXM16DU15M2X LXM16MU10M2X, LXM16MU15M2X | | | | | | |
| | To servo motor | BCH16HM08130A6C2, BCH16LH10330A6C2, BCH16HM10230A6C2, BCH16HM15230A6C2 BCH16HM08132A6C2, BCH16LH10332A6C2, BCH16HM10232A6C2, BCH16HM15232A6C2 | | | | | | |
| For cable cross-section(mm²) | | 4G2 | | | | | | |
| Length (m) | | 1.5 | 3 | 5 | 10 | 15 | 20 | 25 |
| Reference | Unshielded power cordsets | VW3M5A21RA5 | VW3M5A21R03 | VW3M5A21R05 | VW3M5A21R10 | VW3M5A21R15 | VW3M5A21R20 | VW3M5A21R25 |
| | Shielded power cordsets | VW3M5A21RA5S | – | – | VW3M5A21R10S | VW3M5A21R15S | VW3M5A21R20S | VW3M5A21R25S |

| | | | | | | | | |
|--|----------------------------------|--|--------------|--------------|--------------|--------------|--------------|--------------|
| Designation | 3 | Equipped with one MIL connector (servo motor side), and a free lead (servo drive side) Integrating brake control | | | | | | |
| For use | From servo drive | LXM16DU10M2X, LXM16DU15M2X LXM16MU10M2X, LXM16MU15M2X | | | | | | |
| | To servo motor | BCH16HM08130F6C2, BCH16LH10330F6C2, BCH16HM10230F6C2, BCH16HM15230F6C2 BCH16HM08132F6C2, BCH16LH10332F6C2, BCH16HM10232F6C2, BCH16HM15232F6C2 | | | | | | |
| For cable cross-section(mm²) | | 6G2 | | | | | | |
| Length (m) | | 1.5 | 3 | 5 | 10 | 15 | 20 | 25 |
| Reference | Unshielded power cordsets | VW3M5A22RA5 | VW3M5A22R03 | VW3M5A22R05 | VW3M5A22R10 | VW3M5A22R15 | VW3M5A22R20 | VW3M5A22R25 |
| | Shielded power cordsets | VW3M5A22RA5S | VW3M5A22R03S | VW3M5A22R05S | VW3M5A22R10S | VW3M5A22R15S | VW3M5A22R20S | VW3M5A22R25S |

Motor power connectors

| | | |
|--|--|--|
| Designation | Plastic connector 1 | MIL connector 2 |
| Use for | for creating power cordsets | |
| For use with | BCH16LB01330●5C2, BCH16HD02330●5C2, BCH16HD04330●5C2, BCH16HF07330●5C2, BCH16LF10330●5C2 | BCH16HM08130A6C2, BCH16LH10330A6C2, BCH16HM10230A6C2, BCH16HM15230A6C2 |
| | BCH16LB01332●5C2, BCH16HD02332●5C2, BCH16HD04332●5C2, BCH16HF07332●5C2, BCH16LF10330●5C2 | BCH16HM08132A6C2, BCH16LH10332A6C2, BCH16HM10232A6C2, BCH16HM15232A6C2 |
| For cable cross-section(mm²) | 4G0.75 | 4G2.0 |
| Reference | VW3M5A11 | VW3M5A21 |

Easy Lexium 16D Motion control - Connection components



| Unshielded brake control cordsets | | | | | | | |
|--|--|--|-------------|-------------|-------------|-------------|-------------|
| Designation | Equipped with one plastic connector (servo motor side), and a free lead (servo drive side) ① | | | | | | |
| For use | From servo drive | LXM16DU01M2X, LXM16DU02M2X, LXM16DU04M2X, LXM16DU07M2X LXM16MU01M2X, LXM16MU02M2X, LXM16MU04M2X, LXM16MU07M2X | | | | | |
| | To servo motor | BCH16LB01330F5C2, BCH16HD02330F5C2, BCH16HD04330F5C2, BCH16HF07330F5C2, BCH16LF10330F5C2 BCH16LB01332F5C2, BCH16HD02332F5C2, BCH16HD04332F5C2, BCH16HF07332F5C2, BCH16LF10332F5C2 | | | | | |
| For cable cross-section(mm²) | 2 x 0.5 | | | | | | |
| Length (m) | 1.5 | 3 | 5 | 10 | 15 | 20 | 25 |
| Reference | VW3M5A12RA5 | VW3M5A12R03 | VW3M5A12R05 | VW3M5A12R10 | VW3M5A12R15 | VW3M5A12R20 | VW3M5A12R25 |

| Brake connectors | | |
|--|--|--|
| Designation | Plastic connector ① | Mil connector ③ |
| Use for | for creating brake control cordsets | for creating power & brake control cordsets |
| For use with | BCH16LB01330F5C2, BCH16HD02330F5C2, BCH16HD04330F5C2, BCH16HF07330F5C2, BCH16LF10330F5C2 BCH16LB01332F5C2, BCH16HD02332F5C2, BCH16HD04332F5C2, BCH16HF07332F5C2, BCH16LF10332F5C2 | BCH16HM08130F6C2, BCH16LH10330F6C2, BCH16HM10230F6C2, BCH16HM15230F6C2 BCH16HM08132F6C2, BCH16LH10332F6C2, BCH16HM10232F6C2, BCH16HM15232F6C2 |
| For cable cross-section(mm²) | 2 x 0.5 | 6G2.0 |
| Reference | VW3M5A12 | VW3M5A22 |

| Shielded encoder cordsets | | | | | | | |
|--|---|--|-------------|-------------|-------------|-------------|-------------|
| Designation | Equipped with one plastic connector (servo motor side), and VW3M4A31 connector (servo drive side) ② | | | | | | |
| For use | From servo drive | LXM16DU01M2X, LXM16DU02M2X, LXM16DU04M2X, LXM16DU07M2X LXM16MU01M2X, LXM16MU02M2X, LXM16MU04M2X, LXM16MU07M2X | | | | | |
| | To servo motor | BCH16LB01330●5C2, BCH16HD02330●5C2, BCH16HD04330●5C2, BCH16HF07330●5C2, BCH16LF10330●5C2 | | | | | |
| For cable cross-section(mm²) | 2 x 0.5 + 3 x 2 x 0.2 | | | | | | |
| Length (m) | 1.5 | 3 | 5 | 10 | 15 | 20 | 25 |
| Reference | VW3M8A11RA5 | VW3M8A11R03 | VW3M8A11R05 | VW3M8A11R10 | VW3M8A11R15 | VW3M8A11R20 | VW3M8A11R25 |

| | | | | | | | |
|--|---|--|-------------|-------------|-------------|----|-------------|
| Designation | Equipped with one plastic connector (servo motor side), and VW3M4A31 connector (servo drive side) ② | | | | | | |
| For use | From servo drive | LXM16DU01M2X, LXM16DU02M2X, LXM16DU04M2X, LXM16DU07M2X LXM16MU01M2X, LXM16MU02M2X, LXM16MU04M2X, LXM16MU07M2X | | | | | |
| | To servo motor | BCH16LB01332●5C2, BCH16HD02332●5C2, BCH16HD04332●5C2, BCH16HF07332●5C2, BCH16LF10332●5C2 | | | | | |
| For cable cross-section(mm²) | 2 x 0.5 + 1 x 2 x 0.2 | | | | | | |
| Length (m) | 1.5 | 3 | 5 | 10 | 15 | 20 | 25 |
| Reference | VW3M8A12RA5 | VW3M8A12R03 | VW3M8A12R05 | VW3M8A12R10 | VW3M8A12R15 | – | VW3M8A12R25 |

| | | | | | | | |
|--|---|--|-------------|-------------|-------------|-------------|-------------|
| Designation | Equipped with one MIL connector (servo motor side), and VW3M4A31 connector (servo drive side) ③ | | | | | | |
| For use | From servo drive | LXM16DU10M2X, LXM16DU15M2X LXM16MU10M2X, LXM16MU15M2X | | | | | |
| | To servo motor | BCH16HM08130●6C2, BCH16LH10330●6C2, BCH16HM10230●6C2, BCH16HM15230●6C2 | | | | | |
| For cable cross-section(mm²) | 2 x 0.5 + 3 x 2 x 0.2 | | | | | | |
| Length (m) | 1.5 | 3 | 5 | 10 | 15 | 20 | 25 |
| Reference | VW3M8A21RA5 | VW3M8A21R03 | VW3M8A21R05 | VW3M8A21R10 | VW3M8A21R15 | VW3M8A21R20 | VW3M8A21R25 |

| | | | | | | | |
|--|---|--|-------------|-------------|-------------|----|-------------|
| Designation | Equipped with one MIL connector (servo motor side), and VW3M4A31 connector (servo drive side) ③ | | | | | | |
| For use | From servo drive | LXM16DU10M2X, LXM16DU15M2X LXM16MU10M2X, LXM16MU15M2X | | | | | |
| | To servo motor | BCH16HM08132●6C2, BCH16LH10332●6C2, BCH16HM10232●6C2, BCH16HM15232●6C2 | | | | | |
| For cable cross-section(mm²) | 2 x 0.5 + 1 x 2 x 0.2 | | | | | | |
| Length (m) | 1.5 | 3 | 5 | 10 | 15 | 20 | 25 |
| Reference | VW3M8A22RA5 | VW3M8A22R03 | VW3M8A22R05 | VW3M8A22R10 | VW3M8A22R15 | – | VW3M8A22R25 |



Easy Lexium 16D Motion control - Connection components



| Motor encoder connectors | | |
|--|--|--|
| Designation | Plastic connector 4 | Mil connector 3 |
| Use for | for creating encoder cordsets | |
| For use with | BCH16LB01330●5C2, BCH16HD02330●5C2, BCH16HD04330●5C2, BCH16HF07330●5C2, BCH16LF10330●5C2 BCH16LB01332●5C2, BCH16HD02332●5C2, BCH16HD04332●5C2, BCH16HF07332●5C2, BCH16LF10332●5C2 | BCH16HM08130●6C2, BCH16LH10330●6C2, BCH16HM10230●6C2, BCH16HM15230●6C2 BCH16HM08132●6C2, BCH16LH10332●6C2, BCH16HM10232●6C2, BCH16HM15232●6C2 |
| For cable cross-section(mm²) | 2 x 0.5 + 3 x 2 x 0.2 2 x 0.5 + 1 x 2 x 0.2 | |
| Reference | VW3M8A11 | VW3M8A21 |

Easy Lexium 26 servo drive and BCH2 servo motor combinations



Easy Lexium 26 servo drive and BCH2 servo motor: single-phase and 3-phase supply voltage: 200/240 VAC

| | | | | | |
|---|-----------------------|---|---|---|---|
| Power output (kW) | 0.05 | 0.1 | 0.2 | 0.3 | |
| Nominal speed of rotation (min-1) | 3000 | 3,000 | 3,000 | 1,000 | |
| Nominal torque (N.m) | 0.16 | 0.32 | 0.64 | 2.86 | |
| Max peak torque (N.m) | 0.48 | 0.96 | 1.92 | 8.59 | |
| Inertia -without holding brake (kg.cm²) | 0.054 | 0.075 | 0.16 | 6.63 | |
| Motor inertia type | Medium | Medium | Low | Medium | |
| Dimensions: W x H x D (mm) | 55 x 150 x 146 | | | | |
| Reference | Servo drive reference | LXM26DUA5M3X | LXM26DU01M3X | LXM26DU02M3X | LXM26DU04M3X |
| | Servo motor reference | With holding brake BCH2MBA533●F5C | With holding brake BCH2MB0133●F5C | With holding brake BCH2LD0233●F5C | With holding brake BCH2MM0313●F6C |
| | Without holding brake | BCH2MBA533●A5C | BCH2MB0133●A5C | BCH2LD0233●A5C | BCH2MM0313●A6C |

| | | | | | |
|---|-----------------------|---|---|---|---|
| Power output (kW) | 0.4 | 0.4 | 0.5 | 0.6 | |
| Nominal speed of rotation (min-1) | 3,000 | 3,000 | 2,000 | 1,000 | |
| Nominal torque (N.m) | 1.27 | 1.27 | 2.39 | 5.73 | |
| Max peak torque (N.m) | 3.81 | 3.81 | 7.16 | 17.19 | |
| Inertia -without holding brake (kg.cm²) | 0.27 | 0.67 | 6.63 | 6.63 | |
| Motor inertia type | Low | Low | Medium | Medium | |
| Dimensions: W x H x D (mm) | 55 x 150 x 146 | | | | |
| Reference | Servo drive reference | LXM26DU04M3X | LXM26DU04M3X | LXM26DU07M3X | LXM26DU07M3X |
| | Servo motor reference | With holding brake BCH2LD0433●F5C | With holding brake BCH2LF0433●F5C | With holding brake BCH2MM0523●F6C | With holding brake BCH2MM0613●F6C |
| | Without holding brake | BCH2LD0433●A5C | BCH2LF0433●A5C | BCH2MM0523●A6C | BCH2MM0613●A6C |

| | | | | | |
|---|-----------------------|---|---|---|---|
| Power output (kW) | 0.75 | 0.75 | 0.85 | 0.9 | |
| Nominal speed of rotation (min-1) | 3,000 | 3,000 | 1,500 | 1,000 | |
| Nominal torque (N.m) | 2.39 | 2.39 | 5.39 | 8.59 | |
| Max peak torque (N.m) | 7.16 | 7.16 | 13.8 | 25.77 | |
| Inertia -without holding brake (kg.cm²) | 1.19 | 1.54 | 13.5 | 9.7 | |
| Motor inertia type | Low | High | Medium | Medium | |
| Dimensions: W x H x D (mm) | 55 x 150 x 146 | | 55 x 150 x 177 | | |
| Reference | Servo drive reference | LXM26DU07M3X | LXM26DU07M3X | LXM26DU10M3X | LXM26DU10M3X |
| | Servo motor reference | With holding brake BCH2LF0733●F5C | With holding brake BCH2HF0733●F5C | With holding brake BCH2MM0813●F6C | With holding brake BCH2MM0913●F6C |
| | Without holding brake | BCH2LF0733●A5C | BCH2HF0733●A5C | BCH2MM0813●A6C | BCH2MM0913●A6C |

| | | | | |
|---|-----------------------|---|---|---|
| Power output (kW) | 1 | 1 | 1.5 | |
| Nominal speed of rotation (min-1) | 3,000 | 2,000 | 2,000 | |
| Nominal torque (N.m) | 3.18 | 4.77 | 7.16 | |
| Max peak torque (N.m) | 9.54 | 14.3 | 21.48 | |
| Inertia -without holding brake (kg.cm²) | 2.4 | 8.41 | 9.7 | |
| Motor inertia type | Low | High | Medium | |
| Dimensions: W x H x D (mm) | 55 x 150 x 177 | | | |
| Reference | Servo drive reference | LXM26DU10M3X | LXM26DU10M3X | LXM26DU15M3X |
| | Servo motor reference | With holding brake BCH2LH1033●F6C | With holding brake BCH2HM1023●F6C | With holding brake BCH2MM1523●F6C |
| | Without holding brake | BCH2LH1033●A6C | BCH2HM1023●A6C | BCH2MM1523●A6C |

Easy Lexium 26 servo drive and BCH2 servo motor combinations



Easy Lexium 26 servo drive and BCH2 servo motor: 3-phase supply voltage: 200/240 VAC

| | | | | | |
|---|-----------------------|---|--|--|--|
| Power output (kW) | 2.0 | 2.0 | 2.0 | 3.0 | |
| Nominal speed of rotation (min-1) | 3,000 | 2,000 | 2,000 | 1,500 | |
| Nominal torque (N.m) | 6.37 | 9.55 | 9.55 | 14.32 | |
| Max peak torque (N.m) | 19.11 | 28.65 | 28.65 | 42.97 | |
| Inertia -without holding brake (kg.cm²) | 4.26 | 13.5 | 34.68 | 53.56 | |
| Motor inertia type | Low | Medium | High | Medium | |
| Dimensions: W x H x D (mm) | 62 x 170 x 191.6 | | | 117.4 x 234 x 193 | |
| Reference | Servo drive reference | LXM26DU20M3X | LXM26DU20M3X | LXM26DU20M3X | LXM26DU30M3X |
| | Servo motor reference | With holding brake BCH2LH2033●F6C Without holding brake BCH2LH2033●A6C | BCH2MM2023●F6C BCH2MM2023●A6C | BCH2HR2023●F6C BCH2HR2023●A6C | BCH2MR3023●F6C BCH2MR3023●A6C |

| | | | | |
|---|-----------------------|---|--|--|
| Power output (kW) | 3.0 | 3.5 | 4.5 | |
| Nominal speed of rotation (min-1) | 2,000 | 2,000 | 1,500 | |
| Nominal torque (N.m) | 19.1 | 16.7 | 26.65 | |
| Max peak torque (N.m) | 57.29 | 50.3 | 71.62 | |
| Inertia -without holding brake (kg.cm²) | 53.56 | 53.56 | 73.32 | |
| Motor inertia type | Medium | Medium | Medium | |
| Dimensions: W x H x D (mm) | 117.4 x 234 x 193 | | | |
| Reference | Servo drive reference | LXM26DU30M3X | LXM26DU45M3X | LXM26DU45M3X |
| | Servo motor reference | With holding brake BCH2MR3013●F6C Without holding brake BCH2MR3013●A6C | BCH2MR3523●F6C BCH2MR3523●A6C | BCH2MR4513●F6C BCH2MR4513●A6C |

Easy Lexium 26 servo drive - Configuration tools



6

SoMove setup software

| | |
|--------------------|--|
| Description | USB/RJ45 cordset 1 Used to connect a PC to the device (Lexium Easy 26): this cable is 2.5 m/8.20 ft long and has a USB connector (PC end) and an RJ45 connector (device end) |
| Reference | TCSMCNAM3M002P |

Multi-Loader configuration tool

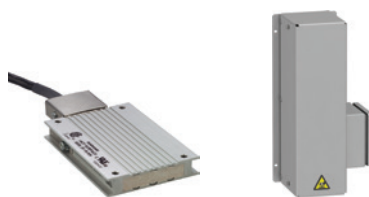
| | | |
|--------------------|---|--|
| Description | Multi-Loader configuration tool 2 Supplied with: <ul style="list-style-type: none"> ■ 1 cordset equipped with 2 RJ45 connectors ■ 1 cordset equipped with one type A USB connector and one mini B USB connector ■ 1 x 2 GB SD memory card ■ 1 x female/female RJ 45 adapter ■ 4 AA 1.5 V LFR6 round batteries | Cordset for Multi-Loader tool 3 For connecting the Multi-Loader tool to the Lexium Easy 26 servo drive in its packaging. Equipped with: <ul style="list-style-type: none"> ■ A non-locking RJ45 connector with special mechanical catch on the drive end and ■ An RJ45 connector on the Multi-Loader end |
| Reference | VW3A8121 | VW3A8126 |

Easy Lexium 26 servo drive - Accessories



| Connection accessories | | | |
|------------------------|---|---|--------------------|
| Designation | I/O connector (sold in lots of 3) | I/O terminal block module | |
| For use with | Lexium Easy 26 | Lexium Easy 26 | |
| Description | 1 Sub-D 50-pin connector for CN1 I/O interface | 2 Terminal block + Cordset (consisting of 2 Sub-D 50-pin connectors type VW3M1C12 and 0.5 m cable) for CN1 I/O interface connection | |
| Reference | VW3M1C12 | VW3M1C13 | |
| Description | 3 I/O connection cordsets Equipped with one SUB-D 50-pin connector for connection to the CN1 interface (drive end), and open end (controller end) | | |
| Use | This cable is dedicated to Schneider Electric PLCs, type Modicon M218/M221/M241/M200, for controlling Lexium Easy 26 servo drives with pulse-train-output (PTO) and pulse-train-input (PTI) signals | | |
| Length (m) | 1 | 2 | 3 |
| Reference | VW3M1C10R10 | VW3M1C10R20 | VW3M1C10R30 |

Easy Lexium 26 servo drive - Braking resistors



| External braking resistor | | | | | | |
|------------------------------|--------------------------------|------|--------------------|--------------------|--------------------|--------------------|
| Ohmic value (W) | 10 | | 27 | | | |
| Continuous power | 400 | | 100 | 200 | 400 | |
| Peak energy 230V (Ws) | 13,300 | | 3,800 | 7,400 | 18,100 | |
| Reference | Length of connection cable (m) | 0.75 | VW3A7601R07 | VW3A7602R07 | VW3A7603R07 | VW3A7604R07 |
| | | 2 | VW3A7601R20 | VW3A7602R20 | – | VW3A7604R20 |
| | | 3 | VW3A7601R30 | – | VW3A7603R30 | VW3A7604R30 |
| Ohmic value (W) | 72 | | 10 | | | 16 |
| Continuous power | 200 | | 400 | 956 | 956 | |
| Peak energy 230V (Ws) | 9,600 | | 24,700 | – | | |
| Reference | Length of connection cable (m) | 0.75 | VW3A7606R07 | VW3A7607R07 | VW3A7734 | VW3A7733 |
| | | 2 | VW3A7606R20 | VW3A7607R20 | – | – |
| | | 3 | VW3A7606R30 | VW3A7607R30 | – | – |

Note: The total continuous power dissipated in the external braking resistor(s) must be less than or equal to the nominal power of the Easy Lexium 26 servo drive.

Easy Lexium 26 servo drive - Additional EMC input filters



Additional EMC input filters

Single-phase supply voltage

| For servo drives (max. nominal power) Combination | 50 W to 750 W servo drives 1 x EMC filter and a single Lexium Easy 26 servo drive | 1 kW and 1.5 kW servo drives 1 x EMC filter and a single Lexium Easy 26 servo drive | 7.5 kW max servo drives 1 x common EMC filter and several Lexium Easy 26 servo drives |
|---|--|--|--|
| Line current (A) | 9 | 16 | 24 |
| Reference | VW3A4420 | VW3A4421 | VW3A4426 |

Three-phase supply voltage

| For servo drives (max. nominal power) Combination | 50 W to 1.5 kW, 2kW and 3kW servo drives 1 x EMC filter and a single Lexium Easy 26 servo drive | 4.5 kW servo drives 1 x EMC filter and a single Lexium Easy 26 servo drive | Up to 10 kW servo drives 1 x common EMC filter and several Lexium Easy 26 servo drives |
|---|--|---|---|
| Line current (A) | 15 | 25 | 47 |
| Reference | VW3A4422 | VW3A4423 | VW3A4424 |

Easy Lexium 26 servo drive - Protection using fuses



Combinations - circuit-breakers for single drive installation according to IEC 60364-5-52

| Servo drive | Nominal power (kW) | 0.05 | 0.1 | 0.2 | 0.4 | 0.75 |
|-----------------|----------------------|----------------|--------------|--------------|--------------|--------------|
| | Main number of phase | 1 or 3 | | | | |
| | Reference | ① LXM26DUA5M3X | LXM26DU01M3X | LXM26DU02M3X | LXM26DU04M3X | LXM26DU07M3X |
| Circuit-breaker | Rating (A) | 10 | | | | |
| | Reference | ② GV2P14 | | | | |
| Contactor | Reference (1) (2) | ③ LC1K0610●● | | | LC1K09●● | |

| Servo drive | Nominal power (kW) | 1 | 1 | 2 | 3 | 4 |
|-----------------|----------------------|----------------|--------------|--------------|--------------|--------------|
| | Main number of phase | 1 or 3 | | | 3 | |
| | Reference | ① LXM26DU10M3X | LXM26DU15M3X | LXM26DU20M3X | LXM26DU30M3X | LXM26DU45M3X |
| Circuit-breaker | Rating (A) | 10 | 14 | 18 | 18 | 23 |
| | Reference | ② GV2P14 | GV2P16 | GV2P20 | GV2P20 | GV2P21 |
| Contactor | Reference (1) (2) | ③ LC1K12●● | LC1D18●● | LC1D32●● | LC1D32●● | LC1D65●● |

(1) Composition of the contactors:

LC1 K06: 3 poles + 1 N/O auxiliary contact

LC1 D●●: 3 poles + 1 N/O auxiliary contact + 1 NIC auxiliary contact

Please refer to the "TeSys" catalog.

(2) Replace ●● with the control circuit voltage code given in the table below:

| LC1K | Volts ~ | 220 Volts ~ | 230 Volts ~ | 240 Volts ~ |
|------|----------|-----------------|-------------|-----------------|
| | 50/60 Hz | M7 | P7 | U7 |
| LC1D | Volts ~ | 220/230 Volts ~ | 230 Volts ~ | 230/240 Volts ~ |
| | 50 Hz | M5 | P5 | U5 |
| | 60 Hz | M6 | - | U6 |
| | 50/60 Hz | M7 | P7 | U7 |

For other available voltages between 24 V and 660 V, or a DC control circuit, please contact our Customer Care Center

Easy Lexium 26 servo drive - Protection using class J fuses



Protection using class J fuses (UL certification) - Mains supply voltage: 200...240 V a 50/60Hz

| | | | | | |
|--------------------------------|--------------|--------------|--------------|--------------|--------------|
| Fuse to be placed upstream (A) | 5 | 5 | 5 | 20 | 20 |
| Nominal power (kW) | 0.05 | 0.1 | 0.2 | 0.4 | 0.75 |
| Reference | LXM26DUA5M3X | LXM26DU01M3X | LXM26DU02M3X | LXM26DU04M3X | LXM26DU07M3X |
| Fuse to be placed upstream (A) | 25 | 40 | 60 | 80 | 160 |
| Nominal power (kW) | 1 | 1 | 2 | 3 | 4.5 |
| Reference | LXM26DU10M3X | LXM26DU15M3X | LXM26DU20M3X | LXM26DU30M3X | LXM26DU45M3X |

Easy Lexium 26 servo drive - Holding brake controller



Holding brake controller

| | |
|-------------|--|
| Description | 24 V $\overline{\text{---}}$ power supply Max. power 0.05 kW IP 20, for mounting on 55 mm $\overline{\text{---}}$ rail |
| Reference | VW3M3103 |

Easy Lexium 26 servo drive - BCH2 servo motors

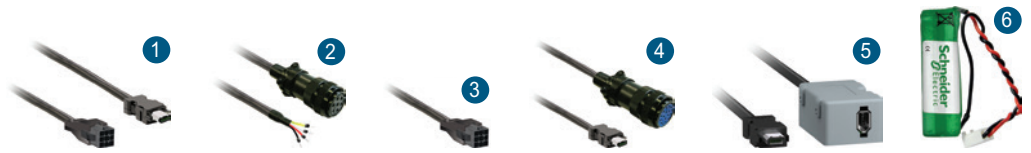


BCH2 servo motors

| Brushless servo motor | | B | C | H | 2 | • | • | •• | • | • | C | • | • | C | | |
|--|--|---|---|---|---|---|----|----|---|---|---|---|---|---|--|--|
| Inertia | Low inertia | | | | | L | | | | | | | | | | |
| | Medium inertia | | | | | M | | | | | | | | | | |
| | High inertia | | | | | H | | | | | | | | | | |
| Flange size (mm) | 40 | | | | | | B | | | | | | | | | |
| | 60 | | | | | | D | | | | | | | | | |
| | 80 | | | | | | F | | | | | | | | | |
| | 100 | | | | | | H | | | | | | | | | |
| | 130 | | | | | | M | | | | | | | | | |
| | 180 | | | | | | R | | | | | | | | | |
| Rated output (W) | 50W | | | | | | | A5 | | | | | | | | |
| | 100W | | | | | | | 01 | | | | | | | | |
| | 200W | | | | | | | 02 | | | | | | | | |
| | 300W | | | | | | | 03 | | | | | | | | |
| | 400W | | | | | | | 04 | | | | | | | | |
| | 500W | | | | | | | 05 | | | | | | | | |
| | 600W | | | | | | | 06 | | | | | | | | |
| | 750W | | | | | | | 07 | | | | | | | | |
| | 850W | | | | | | | 08 | | | | | | | | |
| | 1 kW | | | | | | | 10 | | | | | | | | |
| | 1.5 kW | | | | | | | 15 | | | | | | | | |
| | 2 kW | | | | | | | 20 | | | | | | | | |
| 3 kW | | | | | | | 30 | | | | | | | | | |
| 3.5 kW | | | | | | | 35 | | | | | | | | | |
| 4.5 kW | | | | | | | 45 | | | | | | | | | |
| Power supply ~ 220 V Winding type (rpm) | 1000/1500 | | | | | | | | 1 | | | | | | | |
| | 2000 | | | | | | | | 2 | | | | | | | |
| | 3000 | | | | | | | | 3 | | | | | | | |
| Shaft end | Keyed shaft (shaft & housing IP 65) | | | | | | | | | | 3 | | | | | |
| Encoder | High resolution single-turn absolute encoder, 20-bit resolution | | | | | | | | | | C | | | | | |
| | High resolution multi-turn absolute encoder, 20 bit resolution, 4096 turns | | | | | | | | | | M | | | | | |
| Holding brake | Without brake | | | | | | | | | | A | | | | | |
| | With brake (option) | | | | | | | | | | F | | | | | |
| Connections | Free leads with connectors (BCH2•B/•D/•F motors only) | | | | | | | | | | 5 | | | | | |
| | MIL connectors (BCH2•H/pM/•R motors only) | | | | | | | | | | 6 | | | | | |
| Mechanical motor design | Motor compatible with Asian style mounting standards | | | | | | | | | | | | | C | | |

6

Easy Lexium 26 servo drive - Connection components



Shielded power cordsets for BCH2 motors without brake

| | | | | | | |
|---------------------|------------|---|---|--------------------|--------------------|--------------------|
| Connector | | 1 Equipped with one quick connector (servo motor end), and open end (servo drive end) | 2 Equipped with one MIL connector (servo motor end), and open end (servo drive end) | | | |
| AWG/mm ² | | AWG18 / 4 x 1 | AWG16 / 4 x 1.5 | AWG12 / 4 x 4 | AWG10 / 4 x 6 | |
| Reference | Length (m) | 1.5 | VW3M5D1AR15 | – | – | |
| | | 3 | VW3M5D1AR30 | VW3M5D2AR30 | VW3M5D4AR30 | VW3M5D6AR30 |
| | | 5 | VW3M5D1AR50 | VW3M5D2AR50 | VW3M5D4AR50 | VW3M5D6AR50 |

Shielded power cordsets for BCH2 motors with brake

| | | | | | | |
|---------------------|------------|---|--|-----------------------------|-----------------------------|--------------------|
| Connector | | 1 Equipped with one quick connector (servo motor end), and open end (servo drive end) | 2 Equipped with one MIL connector (servo motor end), and a free lead (servo drive end) | | | |
| AWG/mm ² | | AWG18 / (4 x 1) + (2 x 1) | AWG16 / (4 x 1.5) + (2 x 1) | AWG12 / (4 x 4) + (2 x 1.5) | (4 x 6) + (2 x 1.5) / AWG10 | |
| Reference | Length (m) | 3 | VW3M5D1FR30 | VW3M5D2FR30 | VW3M5D4FR30 | VW3M5D6FR30 |
| | | 5 | VW3M5D1FR50 | VW3M5D2FR50 | VW3M5D4FR50 | VW3M5D6FR50 |

Motor power connector kits

| | | | | | |
|--------------|--|---|--|--|--|
| Description | | 3 Motor power connector kits (sold in lots of 3) | | 4 Power MIL connector kits | |
| For use with | | BCH2●B/●D/●F motors (flange size: 40/60/80 mm) with flying lead connection, without brake | BCH2●B/●D/●F motors (flange size: 40/60/80 mm) with flying lead connection, with brake | BCH2●H/●M motors (flange size: 100/130 mm) with or without brake | BCH2●R motors (flange size: 180 mm, from 2.0 kW to 5.5 kW) with or without brake |
| Reference | | VW3M5D1A | VW3M5D1F | VW3M5D2A | VW3M5D2B |

Shielded encoder cordsets

| | | | | | |
|--------------|------------|---|--------------------|---|--|
| Description | | 1 Equipped with one plastic connector (servo motor end), and a firewire connector (servo drive end) | | 4 Equipped with one MIL connector (servo motor end), and a firewire connector (servo drive end) | |
| For use with | | BCH2●B/●D/●F motors, for connection to CN2 interface | | BCH2●H/●M/●R motors, for connection to CN2 interface | |
| Composition | | 10 x 0.13 mm ² / 10 x 26 AWG | | 10 x 0.13 mm ² / 10 x 26 AWG | |
| Reference | Length (m) | 1.5 | VW3M8D1AR15 | – | |
| | | 3 | VW3M8D1AR30 | VW3M8D2AR30 | |
| | | 5 | VW3M8D1AR50 | VW3M8D2AR50 | |

Encoder connector kits

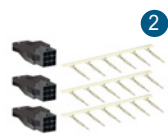
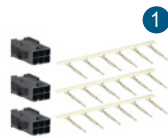
| | | | | | |
|--------------|--|--|--|--|--|
| Description | | 3 Encoder connector kits including one plastic connector (servo motor end), and a firewire connector (servo drive end) (sold in lots of 2) | | 4 Encoder connector kits including one MIL connector (servo motor end), and a firewire connector (servo drive end) (sold in lots of 2) | |
| For use with | | BCH2●B/●D/●F motors (flange: 40/60/80 mm) with flying lead connection | | BCH2●H/●M/●R motors (flange: 100/130/180 mm) with MIL connector | |
| Reference | | VW3M8D1A | | VW3M8D2A | |

Accessories for use with BCH2 motors with multi-turn absolute encoder

| | | | | | |
|--------------|--|--|--|--|--|
| Description | | 5 Battery compartment | | 6 Battery 3.6 V | |
| For use with | | BCH2 motors with multi-turn absolute encoder | | BCH2 motors with multi-turn absolute encoder and battery compartment "VW3M8BATC" | |
| Reference | | VW3M8BATC | | VW3M9BATT | |



Easy Lexium 26 servo drive - Connection components



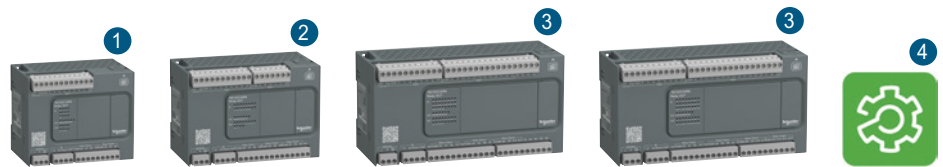
Selection of motor connector kit or encoder connector kit, according to BCH2 motor type

| Motor | 1 Motor power cable connector kit | | 2 Encoder connector kit | 3 Motor power cable | | 4 Encoder cable |
|----------------|-----------------------------------|------------|-------------------------|---------------------|-------------|-----------------|
| | Without brake | With brake | | Without brake | With brake | |
| BCH2MBA53●●5C | VW3M5D1A | VW3M5D1F | VW3M8D1A | VW3M5D1AR●● | VW3M5D1FR●● | VW3M8D1AR●● |
| BCH2MB0133●●5C | | | | | | |
| BCH2LD0233●●5C | | | | | | |
| BCH2LD0433●●5C | | | | | | |
| BCH2LF0433●●5C | | | | | | |
| BCH2HF0733●●5C | | | | | | |
| BCH2LF0733●●5C | | | | | | |
| BCH2LH1033●●6C | VW3M5D2A | VW3M5D2A | VW3M8D2A | VW3M5D2AR●● | VW3M5D2FR●● | VW3M8D2AR●● |
| BCH2LH2033●●6C | | | | | | |
| BCH2MM0813●●6C | | | | | | |
| BCH2MM0313●●6C | | | | | | |
| BCH2MM0523●●6C | | | | | | |
| BCH2MM0613●●6C | | | | | | |
| BCH2HM1023●●6C | | | | | | |
| BCH2MM0913●●6C | | | | | | |
| BCH2MM1523●●6C | | | | | | |
| BCH2MM2023●●6C | | | | | | |
| BCH2HR2023●●6C | VW3M5D2B | VW3M5D2B | VW3M8D2A | VW3M5D4AR●● | VW3M5D4FR●● | VW3M8D2AR●● |
| BCH2MR3013●●6C | | | | VW3M5D6AR●● | VW3M5D6FR●● | |
| BCH2MR3023●●6C | | | | | | |
| BCH2MR3523●●6C | | | | | | |
| BCH2MR4513●●6C | | | | | | |



07. Easy Modicon Logic Controllers

Easy Modicon M100 logic controllers



| Easy Modicon M100 logic controllers (1) | | | | |
|---|--|---|--|--|
| Number of digital I/O | 16 ¹ | 24 ² | 32 ³ | 40 ³ |
| Digital inputs | <ul style="list-style-type: none"> ■ 9 sink/source ■ 24 VDC input voltage ■ 4 fast inputs for FC ■ 3 regular inputs ■ 2 high speed inputs for HSC | <ul style="list-style-type: none"> ■ 14 sink/source ■ 24 VDC input voltage ■ 4 fast inputs for FC ■ 8 regular inputs ■ 2 high speed inputs for HSC | <ul style="list-style-type: none"> ■ 20 sink/source ■ 24 VDC input voltage ■ 4 fast inputs for FC ■ 14 regular inputs ■ 2 high speed inputs for HSC | <ul style="list-style-type: none"> ■ 24 sink/source ■ 24 VDC input voltage ■ 4 fast inputs for FC ■ 18 regular inputs ■ 2 high speed inputs for HSC |
| Digital outputs (relay outputs) | 7 | 10 | 12 | 16 |
| Serial link (2) | 1 | | | |
| Supply voltage | 110...220 VAC | | | |
| Programming software (3) | EcoStruxure Machine Expert - Basic ⁴ | | | |
| Reference | TM100C16RN | TM100C24RN | TM100C32RN | TM100C40RN |

(1) M100 controllers are supplied with:

- removable screw terminal blocks for connecting the I/O
- a removable screw terminal block for connecting the power supply
- a removable screw terminal block for the serial link

(2) Each M100 logic controller has an embedded USB mini-B programming port.

(3) PC should be equipped with Windows 7 or 10 (32-bit or 64-bit). To download this programming software, please visit our site www.se.com.

Easy Modicon M200 logic controllers



Easy Modicon M200 logic controllers (1)

| | | | | |
|---------------------------------|---|---|--|------------------|
| Supply voltage | 110...220 VAC | | | |
| Number of digital I/O | 16 | 24 | 32 | |
| Digital inputs | <ul style="list-style-type: none"> ■ 9 sink/source ■ 24 VDC input voltage ■ 4 fast inputs for FC ■ 1 regular input ■ 4 high speed inputs for HSC | <ul style="list-style-type: none"> ■ 14 sink/source ■ 24 VDC input voltage ■ 4 fast inputs for FC ■ 6 regular inputs ■ 4 high speed inputs for HSC | <ul style="list-style-type: none"> ■ 20 sink/source ■ 24 VDC input voltage ■ 4 fast inputs for FC ■ 12 regular inputs ■ 4 high speed inputs for HSC | |
| Digital outputs (relay outputs) | 7 | 10 | 12 | |
| Dimension (W x H x D) | 110 x 70 x 90 ¹ | 130 x 70 x 90 ² | 175 x 70 x 90 ³ | |
| Ethernet (RJ 45) | – | – | 1 | – |
| Serial link (2) | 1 | – | – | – |
| Reference | TM200C16R | TM200C24R | TM200CE24R | TM200C32R |

| | | | | |
|---------------------------------|--|--|--|------------------|
| Supply voltage | 110...220 VAC | | | |
| Number of digital I/O | 32 | 40 | 60 | |
| Digital inputs | <ul style="list-style-type: none"> ■ 20 sink/source ■ 24 VDC input voltage ■ 4 fast inputs for FC ■ 12 regular inputs ■ 4 high speed inputs for HSC | <ul style="list-style-type: none"> ■ 24 sink/source ■ 24 VDC input voltage ■ 4 fast inputs for FC ■ 16 regular inputs ■ 4 high speed inputs for HSC | <ul style="list-style-type: none"> ■ 36 sink/source ■ 24 VDC input voltage ■ 4 fast inputs for FC ■ 28 regular inputs ■ 4 high speed inputs for HSC | |
| Digital outputs (relay outputs) | 12 | 16 | 24 | |
| Dimension (W x H x D) | 175 x 70 x 90 ³ | – | 225 x 70 x 90 ⁴ | |
| Ethernet (RJ 45) | 1 | – | 1 | – |
| Serial link (2) | 1 | – | – | – |
| Reference | TM200CE32R | TM200C40R | TM200CE40R | TM200C60R |

| | | | | |
|-----------------------|--|---|--|--|
| Supply voltage | 24 VDC | | | |
| Number of digital I/O | 16 | | | |
| Digital inputs | <ul style="list-style-type: none"> ■ 9 sink/source ■ 24 VDC input voltage | <ul style="list-style-type: none"> ■ 4 fast inputs for FC ■ 1 regular input | <ul style="list-style-type: none"> ■ 4 high speed inputs for HSC | |
| Digital outputs | <ul style="list-style-type: none"> ■ 7 sink outputs ■ 5 regular transistor outputs ■ 2 fast outputs (PWM/PLS/PTO) | – | <ul style="list-style-type: none"> ■ 7 source outputs ■ 5 regular transistor outputs ■ 2 fast outputs (PWM/PLS/PTO) | |
| Dimension (W x H x D) | 110 x 70 x 90 ¹ | | | |
| Ethernet (RJ 45) | – | | | |
| Serial link (2) | 1 | | | |
| Reference | TM200C16U | | TM200C16T | |

7

| | | | | |
|-----------------------|---|--|---|-------------------|
| Supply voltage | 24 VDC | | | |
| Number of digital I/O | 24 | | | |
| Digital inputs | <ul style="list-style-type: none"> ■ 14 sink/source ■ 24 VDC input voltage | <ul style="list-style-type: none"> ■ 4 fast inputs for FC ■ 6 regular inputs | <ul style="list-style-type: none"> ■ 4 high speed inputs for HSC | |
| Digital outputs | <ul style="list-style-type: none"> ■ 10 sink outputs ■ 8 regular transistor outputs ■ 2 fast outputs (PWM/PLS/PTO) | – | <ul style="list-style-type: none"> ■ 10 source outputs ■ 8 regular transistor outputs ■ 2 fast outputs (PWM/PLS/PTO) | |
| Dimension (W x H x D) | 130 x 70 x 90 ² | | | |
| Ethernet (RJ 45) | – | 1 | – | 1 |
| Serial link (2) | 1 | | | |
| Reference | TM200C24U | TM200CE24U | TM200C24T | TM200CE24T |

| | | | | |
|-----------------------|--|---|--|--|
| Supply voltage | 24 VDC | | | |
| Number of digital I/O | 32 | | | |
| Digital inputs | <ul style="list-style-type: none"> ■ 20 sink/source ■ 24 VDC input voltage | <ul style="list-style-type: none"> ■ 4 fast inputs for FC ■ 12 regular inputs | <ul style="list-style-type: none"> ■ 4 high speed inputs for HSC | |
| Digital outputs | <ul style="list-style-type: none"> ■ 12 sink outputs ■ 10 regular transistor outputs ■ 2 fast outputs (PWM/PLS/PTO) | – | <ul style="list-style-type: none"> ■ 12 source outputs ■ 10 regular transistor outputs ■ 2 fast outputs (PWM/PLS/PTO) | |
| Dimension (W x H x D) | 175 x 70 x 90 ³ | | | |
| Ethernet (RJ 45) | – | | | |
| Serial link (2) | 1 | | | |
| Reference | TM200C32U | | TM200C32T | |

Easy Modicon M200 logic controllers



Easy Modicon M200 logic controllers (1)

| | | | | |
|-----------------------|--|--|-------------------------------|------------|
| Supply voltage | 24 VDC | | | |
| Number of digital I/O | 40 | | | |
| Digital inputs | ■ 24 sink/source ■ 24 VDC input voltage | ■ 4 fast inputs for FC ■ 16 regular inputs | ■ 4 high speed inputs for HSC | |
| Digital outputs | ■ 16 sink outputs ■ 14 regular transistor outputs ■ 2 fast outputs (PWM/PLS/PTO) | ■ 16 source outputs ■ 14 regular transistor outputs ■ 2 fast outputs (PWM/PLS/PTO) | | |
| Dimension (W x H x D) | 175 x 70 x 90 ³ | | | |
| Ethernet (RJ 45) | – | 1 | – | 1 |
| Serial link (2) | 1 | | | |
| Reference | TM200C40U | TM200CE40U | TM200C40T | TM200CE40T |

(1) M200 controllers are supplied with:

- removable screw terminal blocks for connecting the I/O
- a removable screw terminal block for connecting the power supply
- a removable screw terminal block for the serial link

(2) Each M200 logic controller has an embedded USB mini-B programming port.

Easy Modicon M200 logic controllers - Accessories



Cartridges for Easy Modicon M200 logic controllers (1)

| Description | Digital I/O cartridges | Communication cartridges | |
|-------------|--|--|---|
| Details | <ul style="list-style-type: none"> 2 digital inputs 2 transistor sink outputs Connection via screw terminal block | 1 additional RS232C or RS485 serial link on screw terminal block | Controllers 16IO/24IO can support 1 additional isolated RS485 serial link on screw terminal block. Controllers 32IO/40IO/60IO can support 2 additional isolated RS485 serial link on screw terminal block |
| Reference | TMCR2DM4U | TMCR2SL1 | TMCR2SL1S |

| Description | Analog I/O cartridges | | |
|-------------|--|---|--|
| Details | <ul style="list-style-type: none"> 2 analog inputs (12-bit resolution) configurable as: <ul style="list-style-type: none"> 0...10 V voltage 0...20 mA/4...20 mA current Connection via screw terminal block | <ul style="list-style-type: none"> 2 analog inputs (12-bit resolution) 0...10V/ 0...5V/ 0...20mA / 4...20mA 1 analog output (12-bit resolution) 0...10V/ 0...5V/ 0...20mA / 4...20mA Connection via screw terminal block | <ul style="list-style-type: none"> 2 temperature inputs (12 or 14-bit resolution depending on input signal) type K, J, R, S, B, E, T, N, C, PT100, PT1000, NI100, NI1000 Connection via screw terminal block |
| Reference | TMCR2AI2 | TMCR2AM3 | TMCR2TI2 |

| Description | Analog I/O cartridges | | |
|-------------|--|---|--|
| Details | <ul style="list-style-type: none"> 2 analog outputs (12-bit resolution) 0...10 V voltage Connection via screw terminal block | <ul style="list-style-type: none"> 2 analog outputs (12-bit resolution) 4...20 mA current Connection via screw terminal block | |
| Reference | TMCR2AQ2V | TMCR2AQ2C | |



Separate parts for Easy Modicon M200 logic controllers

| | | |
|-------------|-------------------------------|--------------------------|
| Description | Cartridges cover ¹ | RTC battery ² |
| Reference | TMARCOVER | TMARBAT1 |

Replacements parts for Easy Modicon M200 logic controllers ³

| | | |
|-------------|---|---|
| Description | Set of terminal blocks for connecting the I/O on M200 controllers | |
| Details | 3-way terminal block for power supply connection | 4-way terminal block for serial link connection |
| Reference | TMARTB3 | TMARTB4 |

Expansion modules

| | | |
|-------------|-------------------------------------|-------------------------------|
| Description | Modicon TM3 expansion modules | Modicon TM2 expansion modules |
| Details | Easy Modicon M200 logic controllers | |
| Reference | (2) | |

(1) One cartridge for controllers with 16 and 24 I/O. Two cartridges maximum for controllers with 32, 40 and 60 I/O, only one of which can be a communication cartridge.

(2) See our list of compatible expansion modules on next page.

Easy Modicon M200 logic controllers - Product compatibility

| Product compatibility | | | M200 logic controllers | | | |
|-----------------------|-----------------|-----------|--|-----------|-----------|-----------|
| Expansion options | | | Number and type of I/O | TM200C16R | TM200C16U | TM200C16T |
| Modicon TM3 | Digital modules | TM3DI8 | 8 x 24 V $\overline{\text{---}}$ sink/source inputs | | | |
| | | TM3DI16 | 16 x 24 V $\overline{\text{---}}$ sink/source inputs | | | |
| | | TM3DI32K | 32 x 24 V $\overline{\text{---}}$ sink/source inputs | | | |
| | | TM3DQ8R | 8 x 24 V $\overline{\text{---}}$ /240 V a relay outputs | | | |
| | | TM3DQ8T | 8 x 24 V $\overline{\text{---}}$ source transistor outputs | | | |
| | | TM3DQ8U | 8 x 24 V $\overline{\text{---}}$ sink transistor outputs | | | |
| | | TM3DQ16R | 16 x 24 V $\overline{\text{---}}$ /240 V \sim relay outputs | | | |
| | | TM3DQ16T | 16 x 24 V $\overline{\text{---}}$ source transistor outputs | | | |
| | | TM3DQ16U | 16 x 24 V $\overline{\text{---}}$ sink transistor outputs | | | |
| | | TM3DQ32TK | 32 x 24 V $\overline{\text{---}}$ source transistor outputs | | | |
| | | TM3DQ32UK | 32 x 24 V $\overline{\text{---}}$ sink transistor outputs | | | |
| | | TM3DM8R | 4 x 24 V $\overline{\text{---}}$ sink/source inputs + 4 x 24 V $\overline{\text{---}}$ /240 V \sim relay outputs | | | |
| | | TM3DM24R | 16 x 24 V $\overline{\text{---}}$ sink/source inputs + 8 x 24 V $\overline{\text{---}}$ /240 V \sim relay outputs | | | |
| | | TM3RDM16R | 8 x 24 V $\overline{\text{---}}$ sink/source inputs + 8 x 24 V $\overline{\text{---}}$ /240 V \sim relay outputs | | | |
| | | TM3RDM32R | 16 x 24 V $\overline{\text{---}}$ sink/source inputs + 16 x 24 V $\overline{\text{---}}$ /240 V \sim relay outputs | | | |
| | Analog modules | TM3AI2H | 2 voltage/current inputs | | | |
| | | TM3AI4 | 4 voltage/current inputs | | | |
| | | TM3TI4 | 4 voltage/current or temperature inputs | | | |
| | | TM3AI8 | 8 voltage/current inputs | | | |
| | | TM3TI8T | 8 temperature inputs | | | |
| | | TM3AQ2 | 2 voltage/current outputs | | | |
| | | TM3AQ4 | 4 voltage/current outputs | | | |
| | | TM3TM3 | 2 voltage/current or temperature inputs + 1 voltage/current outputs | | | |
| | | TM3AM6 | 4 voltage/current inputs + 2 voltage/current outputs | | | |

Possible to combine, up to 4 modules

Easy Modicon M200 logic controllers - Configuration

| Configuration (1)(2) | | | | | | | | |
|--------------------------------------|-------------------|-------------------------|-------------------------|-------------------------|-------------------------|-------------------------|-------------------------|-----------|
| Configuration limits | Logic controllers | | | | | | | |
| Maximum number of transistor outputs | 130 | 137 | 137 | 130 | 140 | 140 | 132 | 144 |
| Maximum number of relay outputs | 71 | 64 | 64 | 74 | 64 | 64 | 76 | 64 |
| References | TM200C16R | TM200C16T | TM200C16U | TM200C24R TM200CE24R | TM200C24T TM200CE24T | TM200C24U TM200CE24U | TM200C32R TM200CE32R | TM200C32T |
| Configuration limits | Logic controllers | | | | | | | |
| Maximum number of transistor outputs | 144 | 132 | 148 | 148 | 132 | | | |
| Maximum number of relay outputs | 64 | 80 | 64 | 64 | 88 | | | |
| References | TM200C32U | TM200C40R TM200CE40R | TM200C40T TM200CE40T | TM200C40U TM200CE40U | TM200C60R | | | |

(1) Modicon TM3 or TM2 digital I/O modules connect to Modicon M200 logic controllers with a maximum of 4 local I/O modules.

(2) The maximum number of Modicon TM3/TM2 expansion modules can be reduced by the number of transistor outputs or relay outputs used (see the table). For more information on TM3/TM2 expansion modules, please visit our website www.se.com.



08. Easy Sensor

Easy Sensor - Limit switch

Type of head | Plunger (fixing by the body) | Rotary (fixing by the body)

XCE



| Type of operator | Steel end plunger | Steel roller plunger for lateral cam movement | Steel roller plunger for traverse cam movement | Thermoplastic roller lever | Steel roller lever |
|--|-------------------|---|--|----------------------------|--------------------|
| References of complete switches with Flexible rubber cable gland suitable for cable Ø 6...9 mm | | | | | |
| 1 NO + 1 NC (form Za) | XCE110C | XCE102C | XCE103C | XCE118C | XCE119C |

Type of head | Rotary (fixing by the body) | Multi-directional

XCE



| Type of operator | Variable length thermo-plastic roller lever | Variable length metal roller lever | Round Ø 3 mm steel rod | "Cat's whisker" | Spring rod lever with thermoplastic end |
|---|---|------------------------------------|------------------------|-----------------|---|
| References of complete switches with Flexible rubber cable gland suitable for cable Ø6...9 mm | | | | | |
| 1 NO + 1 NC (form Za) | XCE145C | XCE146C | XCE154C | XCE106C | XCE181C |

Type of head | Plunger (fixing by head or body)

XCJ



| Type of operator | Steel end plunger | Steel roller plunger for lateral cam movement | Steel roller plunger for traverse cam movement | Short flat lever plunger | Long flat lever plunger | Short flat roller lever plunger | Long flat roller lever plunger | Short flat roller lever plunger, one way operation |
|---|-------------------|---|--|--------------------------|-------------------------|---------------------------------|--------------------------------|--|
| References of complete switches with Flexible rubber cable gland suitable for cable Ø6...9 mm | | | | | | | | |
| Single pole 1 C/O (form C) | XCJ110C | XCJ102C | XCJ103C | XCJ125C | XCJ126C | XCJ127C | XCJ128C | XCJ121C |

Life Is On



Learn more about automation and control solutions at www.se.com

The information provided in this documentation contains general descriptions and/or technical characteristics of the performance of the products contained herein. This documentation is not intended as a substitute for and is not to be used for determining suitability or reliability of these products for specific user applications. It is the duty of any such user or integrator to perform the appropriate and complete risk analysis, evaluation and testing of the products with respect to the relevant specific application or use thereof. Neither Schneider Electric nor any of its affiliates or subsidiaries shall be responsible or liable for misuse of the information contained herein.

Schneider Electric Industries SAS
35, rue Joseph Monier - CS 30323
F92506 Rueil-Malmaison Cedex

X-ON Electronics

Largest Supplier of Electrical and Electronic Components

Click to view similar products for [Beacon Accessories](#) category:

Click to view products by [Schneider](#) manufacturer:

Other Similar products are found below :

[8WD4400-1AC](#) [LR6-M2WJNW](#) [XVBL0B4](#) [97584080](#) [XVGB3ST](#) [XVMB2RAGSSB](#) [8LT7ALBM](#) [XVGB3](#) [XVGB3SH](#) [HBJD-CZ-4-S](#)
[XVGB4H](#) [XVGB2M](#) [XVGB4](#) [96000005](#) [96000051](#) [XVGB4S](#) [64723075](#) [64587075](#) [64733075](#) [XVGM2SW](#) [8LT7ALBB](#) [XVGB3M](#)
[XVGB4ST](#) [84330055](#) [XVGM3ST](#) [96063009](#) [63930001](#) [XVGB2W](#) [XVGB1SMFA](#) [XVGM3SH](#) [64091000](#) [XVGM2SM](#) [XVGB4SW](#)
[XVGB4M](#) [XVGB4SM](#) [97584004](#) [XVGM3W](#) [XVGM3S](#) [XVGM2W](#) [84310055](#) [XVGM1SA](#) [69935075](#) [XVGB4SH](#) [XVGB2](#) [XVGB2SW](#)
[XVGM1SFA](#) [XVGB3T](#) [XVGB3SM](#) [63445055](#) [96000047](#)