

# ZB4BA68

blue flush illuminated pushbutton head Ø22  
spring return for integral LED

Product availability: Stock - Normally stocked in distribution facility



## Main

|                                 |                                  |
|---------------------------------|----------------------------------|
| Range of product                | Harmony XB4                      |
| Product or component type       | Head for illuminated push-button |
| Device short name               | ZB4                              |
| Product compatibility           | Integral LED                     |
| Bezel material                  | Chromium plated metal            |
| Head type                       | Standard                         |
| Mounting diameter               | 0.87 in (22 mm)                  |
| Sale per indivisible quantity   | 1                                |
| Shape of signaling unit head    | Round                            |
| Type of operator                | Spring return                    |
| Operator profile                | Blue flush unmarked              |
| Operator additional information | For insertion of legend          |

## Complementary

|                                    |   |
|------------------------------------|---|
| CAD overall width                  | 1.14 in (29 mm)   |
| CAD overall height                 | 1.14 in (29 mm)   |
| CAD overall depth                  | 1.18 in (30 mm)   |
| Product weight                     | 0.06 lb(US) (0.028 kg)  |
| Resistance to high pressure washer | 1015.26 psi (7000000 Pa) at 131 °F (55 °C), distance: 0.1 m   |
| Mechanical durability              | 10000000 cycles   |
| Electrical composition code        | C4 6 contacts using single and double blocks in front mounting<br>C3 6 contacts using single blocks in front mounting<br>M1 6 contacts using single blocks in front mounting with integral LED<br>M2 6 contacts using single and double blocks in front mounting with integral LED<br>M6 2 contacts using single blocks in front mounting with integral LED and transformer<br>M10 2 contacts using single blocks in front mounting with integral LED<br>C14 2 contacts using single blocks in front mounting |

## Environment

|                                       |   |
|---------------------------------------|---|
| Protective treatment                  | TH  |
| Ambient air temperature for storage   | -40...158 °F (-40...70 °C)  |
| Ambient air temperature for operation | -40...158 °F (-40...70 °C)  |
| Overvoltage category                  | Class I conforming to IEC 60536   |
| IP degree of protection               | IP69<br>IP67<br>IP66 conforming to IEC 60529<br>IP69K   |
| NEMA degree of protection             | NEMA 13<br>NEMA 4X  |
| IK degree of protection               | IK06 conforming to EN 50102   |
| Standards                             | EN/IEC 60947-5-4<br>EN/IEC 60947-5-5<br>EN/IEC 60947-1<br>UL 508<br>EN/IEC 60947-5-1<br>CSA C22.2 No 14<br>JIS C 4520 |

|                        |  |
|------------------------|--|
| Product certifications | BV<br>UL listed<br>DNV<br>RINA<br>CSA<br>LROS (Lloyds register of shipping)<br>GL  |
| Vibration resistance   | 5 gn (f = 2...500 Hz) conforming to IEC 60068-2-6  |
| Shock resistance       | 30 gn (duration = 18 ms) half sine wave acceleration conforming to IEC 60068-2-27<br>50 gn (duration = 11 ms) half sine wave acceleration conforming to IEC 60068-2-27 |

### Ordering and shipping details

|                       |                                     |
|-----------------------|-------------------------------------|
| Category              | 22468 - PUSHBUTTONS,22MM(METAL) NEW |
| Discount Schedule     | CS2                                 |
| GTIN                  | 00785901380290                      |
| Nbr. of units in pkg. | 1                                   |
| Package weight(Lbs)   | 7.0000000000000007E-2               |
| Returnability         | Y                                   |
| Country of origin     | FR                                  |

### Offer Sustainability

|                           |  |
|---------------------------|--|
| California proposition 65 | WARNING: This product can expose you to chemicals including:   |
| ----- Substance 1         | Nickel compounds, which is known to the State of California to cause cancer, and   |
| ----- Substance 2         | Di-isodecyl phthalate (DIDP), which is known to the State of California to cause birth defects or other reproductive harm. |
| ----- More information    | For more information go to <a href="http://www.p65warnings.ca.gov">www.p65warnings.ca.gov</a>                              |

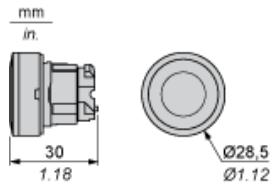
### Contractual warranty

|                 |           |
|-----------------|-----------|
| Warranty period | 18 months |
|-----------------|-----------|

---

Dimensions

---



Panel Cut-out for Pushbuttons, Switches and Pilot Lights (Finished Holes, Ready for Installation)

| Connection by Screw Clamp Terminals or Plug-in Connectors or on Printed Circuit Board   | Connection by Faston Connectors   |
|---|---|
|    |  |
| <p>(1) Diameter on finished panel or support<br/>                 (2) 40 mm min. / 1.57 in. min.<br/>                 (3) 30 mm min. / 1.18 in. min.<br/>                 (4) <math>\varnothing 22.5 \text{ mm} / 0.89 \text{ in.}</math> recommended (<math>\varnothing 22.3 \text{ mm}_0^{+0.4} / 0.88 \text{ in.}_0^{+0.016}</math>)<br/>                 (5) 45 mm min. / 1.78 in. min.<br/>                 (6) 32 mm min. / 1.26 in. min.</p> |   |

Pushbuttons, Switches and Pilot Lights for Printed Circuit Board Connection

Panel Cut-outs (Viewed from Installer's Side)



- A: 30 mm min. / 1.18 in. min.  
 B: 40 mm min. / 1.57 in. min.

## Printed Circuit Board Cut-outs (Viewed from Electrical Block Side)

Dimensions in mm



A: 30 mm min.

B: 40 mm min.

Dimensions in in.



A: 1.18 in. min.

B: 1.57 in. min.

## General Tolerances of the Panel and Printed Circuit Board

The cumulative tolerance must not exceed 0.3 mm / 0.012 in:  $T_1 + T_2 = 0.3 \text{ mm max.}$

## Installation Precautions

- Minimum thickness of circuit board: 1.6 mm / 0.06 in.
- Cut-out diameter: 22.4 mm  $\pm$  0.1 / 0.88 in.  $\pm$  0.004
- Orientation of body/fixing collar ZB4 BZ009:  $\pm 2^\circ 30'$  (excluding cut-outs marked a and b).
- Tightening torque of screws ZBZ 006: 0.6 N.m (5.3 lbf.in) max.
- Allow for one ZB4 BZ079 fixing collar/pillar and its fixing screws:
  - every 90 mm / 3.54 in. horizontally (X), and 120 mm / 4.72 in. vertically (Y).
  - with each selector switch head (ZB4 BD•, ZB4 BJ•, ZB4 BG•).

The fixing centers marked a and b are diagonally opposed and must align with those marked 4 and 5.



- (1) Panel  
(2) Printed circuit board

### Mounting of Adapter (Socket) ZBZ 01

- 1 2 elongated holes for ZBZ 006 screw access
- 2 1 hole  $\varnothing 2.4 \text{ mm} \pm 0.05 / 0.09 \text{ in.} \pm 0.002$  for centring adapter ZBZ 01
- 3 8 ×  $\varnothing 1.2 \text{ mm} / 0.05 \text{ in.}$  holes
- 4 1 hole  $\varnothing 2.9 \text{ mm} \pm 0.05 / 0.11 \text{ in.} \pm 0.002$ , for aligning the printed circuit board (with cut-out marked a)
- 5 1 elongated hole for aligning the printed circuit board (with cut-out marked b)
- 6 4 holes  $\varnothing 2.4 \text{ mm} / 0.09 \text{ in.}$  for clipping in adapter ZBZ 01

Dimensions An + 18.1 relate to the  $\varnothing 2.4 \text{ mm} \pm 0.05 / 0.09 \text{ in.} \pm 0.002$  holes for centring adapter ZBZ 01.

---

Electrical Composition Corresponding to Code C3

---



---

Electrical Composition Corresponding to Code C4

---



---

Electrical Composition Corresponding to Codes C14, SF2 and SR2

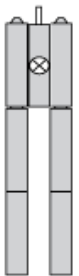
---



---

Electrical Composition Corresponding to Codes M1 and M7

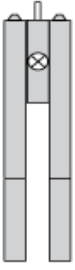
---



---

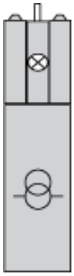
Electrical Composition Corresponding to Codes M2 and M8

---



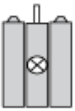
Electrical Composition Corresponding to Codes M6 and P2

---



Electrical Composition Corresponding to Codes M5, M10, MF1, MR1 and MF2

---



Legend

---

Single contact



Double contact



Light block



Possible location





## X-ON Electronics

Largest Supplier of Electrical and Electronic Components

*Click to view similar products for [Switch Actuators](#) category:*

*Click to view products by [Schneider](#) manufacturer:*

Other Similar products are found below :

[LW1B-A0L](#) [LW1B-M0](#) [680-4000-00](#) [704.012.618](#) [704.411.018I](#) [704.412.0](#) [704.633.1](#) [704.730.1](#) [704.733.0](#) [84-1221.7](#) [862.8102](#) [G6083](#)  
[9PA24](#) [A0107X](#) [A019307](#) [ADC-418G](#) [12MA7](#) [ASDHYY-B](#) [HW1F-3G](#) [HW1M-L2222](#) [HW4S-31L](#) [200-.704-00](#) [JS-10008](#) [JS-10083](#) [JS-10118](#) [JS-10133](#) [JS-10277](#) [JS-10389](#) [JS-150](#) [JS-552](#) [JS-555](#) [JS-68](#) [JS-6-B](#) [JS-91](#) [JS-94](#) [22-211.011](#) [9001KXSDC](#) [92-458.500](#) [SAPT654133](#)  
[2PA3](#) [SW53AA2](#) [302561](#) [LW2L-A0](#) [3E-10.4](#) [3E-12.0](#) [468-10243-001](#) [51-030.005](#) [JM-13](#) [JS-10120](#) [JS-138-B](#)