

# ZB5AS934

red Ø30 Emergency stop, switching off head  
Ø22 trigger and latching key release

Product availability: Non-Stock - Not normally stocked in distribution facility



## Main

|                               |  |
|-------------------------------|--|
| Range of product              | Harmony XB5                            |
| Product or component type     | Head                                   |
| Product destination           | Emergency stop push-button             |
| Device short name             | ZB5                                    |
| Bezel material                | Plastic                                |
| Head type                     | Standard                               |
| Mounting diameter             | 0.87 in (22 mm)                        |
| Sale per indivisible quantity | 1                                      |
| Shape of signaling unit head  | Round                                  |
| Type of operator              | Trigger action and mechanical latching |
| Reset                         | Key release                            |
| Operator profile              | Red mushroom Ø 30 mm unmarked          |
| Type of keylock               | Ronis 455                              |
| Key withdrawal position       | Center                                 |

## Complementary

|                             |   |
|-----------------------------|---|
| CAD overall width           | 1.18 in (30 mm)   |
| CAD overall height          | 1.18 in (30 mm)   |
| CAD overall depth           | 3.11 in (79 mm)   |
| Product weight              | 0.15 lb(US) (0.068 kg)  |
| Mechanical durability       | 300000 cycles   |
| Station name                | XALD 1...5 cut-outs<br>XALK 1...5 cut-outs  |
| Electrical composition code | C15 1 contacts using single blocks in front mounting<br>C11 3 contacts using single blocks in front mounting<br>SF1 3 contacts using single blocks in front mounting<br>C7 4 contacts using single blocks in front mounting<br>C8 4 contacts using single and double blocks in front mounting<br>C10 4 contacts using single and double blocks in front mounting<br>SR1 3 contacts using single blocks in rear mounting |

## Environment

|                                       |   |
|---------------------------------------|---|
| Protective treatment                  | TH  |
| Ambient air temperature for storage   | -40...158 °F (-40...70 °C)                                  |
| Ambient air temperature for operation | -40...158 °F (-40...70 °C)                                  |
| Overvoltage category                  | Class II conforming to IEC 60536                            |
| IP degree of protection               | IP69<br>IP67<br>IP66 conforming to IEC 60529<br>IP69K       |
| NEMA degree of protection             | NEMA 13<br>NEMA 4X  |
| Resistance to high pressure washer    | 1015.26 psi (7000000 Pa) at 131 °F (55 °C), distance: 0.1 m |
| IK degree of protection               | IK03 conforming to IEC 50102                                |


The information provided in this documentation contains general descriptions and/or technical characteristics of the performance of the products contained herein. This documentation is not intended as a substitute for and is not to be used for determining suitability or reliability of these products for specific user applications. It is the duty of any such user or integrator to perform the appropriate and complete risk analysis, evaluation and testing of the products with respect to the relevant specific application or use thereof. Neither Schneider Electric Industries SAS nor any of its affiliates or subsidiaries shall be responsible or liable for misuse of the information contained herein.

|                        |   |
|------------------------|---|
| Standards              | EN/IEC 60204-1<br>EN/IEC 60947-1<br>EN/IEC 60947-5-1<br>EN/IEC 60947-5-4<br>EN/IEC 60947-5-5<br>EN/ISO 13850<br>IEC 60364-5-53<br>JIS C 4520<br>UL 508<br>GB 14048.5<br>CSA C22.2 No 14 |
| Product certifications | BV<br>CSA<br>DNV<br>GL<br>LROS (Lloyds register of shipping)<br>RINA<br>UL listed   |
| Vibration resistance   | 5 gn (f = 2...500 Hz) conforming to IEC 60068-2-6   |
| Shock resistance       | 30 gn (duration = 18 ms) half sine wave acceleration conforming to IEC 60068-2-27<br>50 gn (duration = 11 ms) half sine wave acceleration conforming to IEC 60068-2-27                  |

### Ordering and shipping details

|                       |                                       |
|-----------------------|---------------------------------------|
| Category              | 22467 - PUSHBUTTONS,22MM(PLASTIC) NEW |
| Discount Schedule     | CS2                                   |
| GTIN                  | 00785901387640                        |
| Nbr. of units in pkg. | 1                                     |
| Package weight(Lbs)   | 0.10000000000000001                   |
| Returnability         | N                                     |
| Country of origin     | CZ                                    |

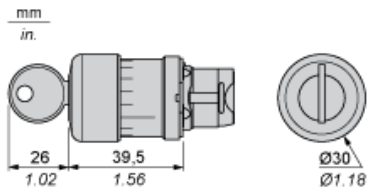
### Offer Sustainability

|                                  |  |
|----------------------------------|--|
| RoHS (date code: YYWW)           | Compliant - since 0627 - Schneider Electric declaration of conformity  <a href="#">Schneider Electric declaration of conformity</a> |
| REACH                            | Reference not containing SVHC above the threshold  |
| Product end of life instructions | Available  |
| California proposition 65        | WARNING: This product can expose you to chemicals including:   |
| ----- Substance 1                | Nickel compounds, which is known to the State of California to cause cancer, and   |
| ----- Substance 2                | Diisodecyl phthalate (DIDP), which is known to the State of California to cause birth defects or other reproductive harm.  |
| ----- More information           | For more information go to <a href="http://www.p65warnings.ca.gov">www.p65warnings.ca.gov</a>  |

### Contractual warranty

|                 |           |
|-----------------|-----------|
| Warranty period | 18 months |
|-----------------|-----------|

Dimensions



Panel Cut-out for Pushbuttons, Switches and Pilot Lights (Finished Holes, Ready for Installation)

Connection by Screw Clamp Terminals or Plug-in Connectors or on Printed Circuit Board



- (1) Diameter on finished panel or support
- (2) For selector switches and Emergency stop buttons, use of an anti-rotation plate type ZB5AZ902 is recommended.
- (3)  $\varnothing 22.5$  mm recommended ( $\varnothing 22.3 \text{ }_0^{+0.4}$ ) /  $\varnothing 0.89$  in. recommended ( $\varnothing 0.88 \text{ in. }_0^{+0.016}$ )

| Connections                                   | a in mm | a in in. | b in mm | b in in. |
|---|---------|----------|---------|----------|
| By screw clamp terminals or plug-in connector | 40      | 1.57     | 30      | 1.18     |
| By Faston connectors                          | 45      | 1.77     | 32      | 1.26     |
| On printed circuit board                      | 30      | 1.18     | 30      | 1.18     |

Detail of Lug Recess



- (1) Diameter on finished panel or support
- (2) For selector switches and Emergency stop buttons, use of an anti-rotation plate type ZB5AZ902 is recommended.
- (3)  $\varnothing 22.5$  mm recommended ( $\varnothing 22.3 \text{ }_0^{+0.4}$ ) /  $\varnothing 0.89$  in. recommended ( $\varnothing 0.88 \text{ in. }_0^{+0.016}$ )

Pushbuttons, Switches and Pilot Lights for Printed Circuit Board Connection





## Mounting of Adapter (Socket) ZBZ01•

- 1 2 elongated holes for ZBZ006 screw access
- 2 1 hole  $\varnothing$  2.4 mm  $\pm$  0.05 / 0.09 in.  $\pm$  0.002 for centring adapter ZBZ01•
- 3 8  $\times$   $\varnothing$  1.2 mm / 0.05 in. holes
- 4 1 hole  $\varnothing$  2.9 mm  $\pm$  0.05 / 0.11 in.  $\pm$  0.002, for aligning the printed circuit board (with cut-out marked a)
- 5 1 elongated hole for aligning the printed circuit board (with cut-out marked b)
- 6 4 holes  $\varnothing$  2.4 mm / 0.09 in. for clipping in adapter ZBZ01•

Dimensions An + 18.1 relate to the  $\varnothing$  2.4 mm  $\pm$  0.05 / 0.09 in.  $\pm$  0.002 holes for centring adapter ZBZ01•.

---

Electrical Composition Corresponding to Code C7

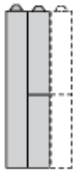
---



---

Electrical Compositions Corresponding to Code C8

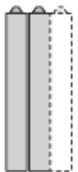
---



---

Electrical Compositions Corresponding to Code C10

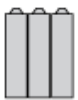
---



---

Electrical Composition Corresponding to Codes C9, C11, SF1 and SR1

---

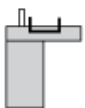


---

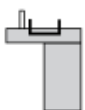
Electrical Composition Corresponding to Code C15

---

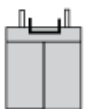
1 N/O



1 N/C



1 N/O + N/C or 1 N/O + N/O or 1 N/C + N/C





## Legend

---

Single contact



Double contact



Light block



Possible location



## X-ON Electronics

Largest Supplier of Electrical and Electronic Components

*Click to view similar products for [Keylock Switches](#) category:*

*Click to view products by [Schneider](#) manufacturer:*

Other Similar products are found below :

[89496-09](#) [89638-00](#) [58J9A90-01C02N](#) [719-0022-020](#) [719-0122-000](#) [719-0201-000](#) [719-0202-000](#) [719-0702-000](#) [84800-04](#) [88521-00](#)  
[88672-00](#) [GKNC33L](#) [GKNC3L](#) [PVA2OAH5](#) [14-136.025K](#) [14-235.022K](#) [AS6H-2K2A](#) [AS6M-2K1B](#) [1571487-1](#) [HW4K-2BF20](#) [JD7510H](#)  
[K6SLYE1.55NL327SD](#) [KH3C-20C](#) [89638-05](#) [A028301](#) [A165K-J2AL-2](#) [A165K-J2M-2](#) [A165K-J3AMR](#) [A165K-J3M](#) [205389 \(PAYGUARD](#)  
[BUTTON PAD\)](#) [2SWK131AL102](#) [30PA39-AML](#) [LW6MJ-2C64WWB](#) [AS6M-2K1A](#) [51-401.036D](#) [51-401.036K](#) [51-414.036D](#) [HW1K-](#)  
[3HF20](#) [4370039](#) [Y1112-2027CLFT](#) [4B01H322NCFQ](#) [51-155.025D](#) [51-195.025D](#) [51-378.AD](#) [51-404.036D](#) [51-405.036D](#) [1-1437597-8](#)  
[86945-05](#) [88169-05](#) [719-0204-000](#)