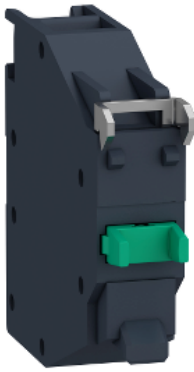


Product data sheet

Specifications



Contact block, Harmony XB4, Explosive atmosphere, NO

ZBE101GEX

Main

Range of product	Harmony XB4
Product or component type	Contact block
Device short name	ZBE
Sale per indivisible quantity	1
Contact operation	Standard
Contact block type	Single
Contacts usage	Gas protected contact
Connections - terminals	Screw clamp terminals, 2 x 1.5 mm ² without cable end Screw clamp terminals, 1 x 2.5 mm ² with cable end

Complementary

CAD overall width	38 mm
CAD overall height	10 mm
CAD overall depth	42.4 mm
Net weight	0.018 kg
Marking	Ex db eb IIC Gb
Contacts type and composition	1 NO
Positive opening	Without
Operating travel	1.657 mm (engagement point) 4.622 mm (changing state point) 4.452 mm (total travel)
Operating force	3.962 N
Mechanical durability	1000000 cycles
Tightening torque	0.8...1.2 N.m conforming to EN 60947-1
[I _{th}] conventional free air thermal current	10 A conforming to EN/IEC 60947-5-1
[U _i] rated insulation voltage	415 V
[I _e] rated operational current	1.9 A at 380 V, AC, A600 conforming to EN/IEC 60947-5-1 3 A at 240 V, AC, A600 conforming to EN/IEC 60947-5-1 6 A at 120 V, AC, A600 conforming to EN/IEC 60947-5-1 0.27 A at 250 V, DC, Q300 conforming to EN/IEC 60947-5-1 0.55 A at 125 V, DC, Q300 conforming to EN/IEC 60947-5-1 2.87 A at 24 V, DC, Q300 conforming to EN/IEC 60947-5-1
Mounting of block	Front mounting

Environment

Protective treatment	TH
Ambient air temperature for storage	-50...70 °C
Ambient air temperature for operation	-50...75 °C
Standards	EN/IEC 60079-7 EN/IEC 60079-0 EN/IEC 60079-1 EN/IEC 60079-31 UL 60079-31 UL 60079-0 CSA C22.2 No 213 UL 60079-1 ANSI/ISA 12.12.01
Product certifications	cULus
Environmental characteristic	Hazardous location class I division 2

Packing Units

Unit Type of Package 1	PCE
Number of Units in Package 1	1
Package 1 Weight	22 g
Package 1 Height	4.2 cm
Package 1 width	1 cm
Package 1 Length	3.8 cm

Offer Sustainability

Sustainable offer status	Green Premium product
REACH Regulation	REACH Declaration
REACH free of SVHC	Yes
EU RoHS Directive	Pro-active compliance (Product out of EU RoHS legal scope) EU RoHS Declaration
Toxic heavy metal free	Yes
Mercury free	Yes
RoHS exemption information	Yes
China RoHS Regulation	China RoHS declaration
Environmental Disclosure	Product Environmental Profile
Circularity Profile	End of Life Information
WEEE	The product must be disposed on European Union markets following specific waste collection and never end up in rubbish bins
California proposition 65	WARNING: This product can expose you to chemicals including: Di-isodecyl phthalate (DIDP), which is known to the State of California to cause birth defects or other reproductive harm. For more information go to www.P65Warnings.ca.gov

X-ON Electronics

Largest Supplier of Electrical and Electronic Components

Click to view similar products for [Industrial Panel Mount Indicators / Switch Indicators](#) category:

Click to view products by [Schneider](#) manufacturer:

Other Similar products are found below :

[LW1A-P1-GD](#) [LW1A-P1-W](#) [01-931.3](#) [01-152.025](#) [73.362.4028.0](#) [750-1520](#) [9001OA120](#) [A0142N5](#) [A3DT-500Y](#) [AL6M-LK3-R](#) [AL6M-P7P-A](#) [AOLQW-2B0600](#) [AP1M255-A](#) [APD106LN-G](#) [APD106LN-S](#) [APN1126-G](#) [APS122DN-W](#) [ASLWLD-G](#) [ASLWLD-R](#) [ATN2100](#) [AYLW4L-A](#) [18-237.035](#) [18-945](#) [HW1A-L1-GD](#) [HW1A-P2-GL](#) [HW1X-BM411-R](#) [HW2A-L1-GL](#) [HW2A-P1-GD](#) [HWAZ1N-OB](#) [PA2100/2](#) [PA2200/1](#) [PA2SHIELD](#) [PAMR25](#) [LA3P-1C03V-Y](#) [96-923.5](#) [A0244J2](#) [LSPD-120A](#) [LSPD-1Y](#) [LSPD-6A](#) [LSPD-6DA](#) [LSPD-6DW](#) [LSPD-6DY](#) [LSPD-6R](#) [LSPD-6W](#) [18-946](#) [AL6H-LK3-A](#) [AL6H-P4-JW](#) [AL6M-LK1-MG](#) [AP8M155-G](#) [APD106LN-W](#)