

2

3

4

5

6

7

8

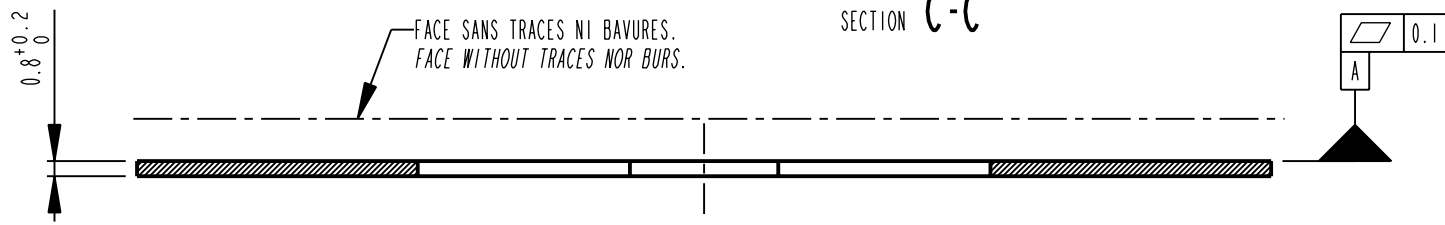
9

10

POUR LE MARQUAGE SE REFERER A LA
SPECIF DE GRAVURE
FOR MARKING REFER
TO THE ENGRAVING SPECIFICATION

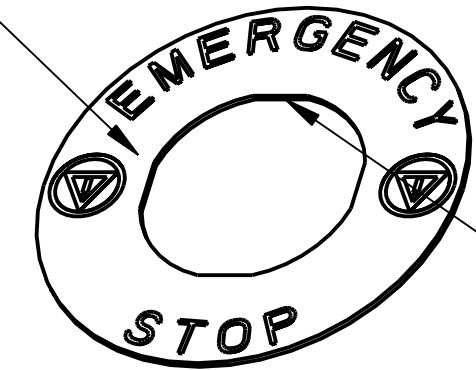
EXEMPLE DE MARQUAGE
MARKING EXAMPLE

SECTION C-C



Pas de traces de graisse ou d'huile.
No traces of grease or oil.

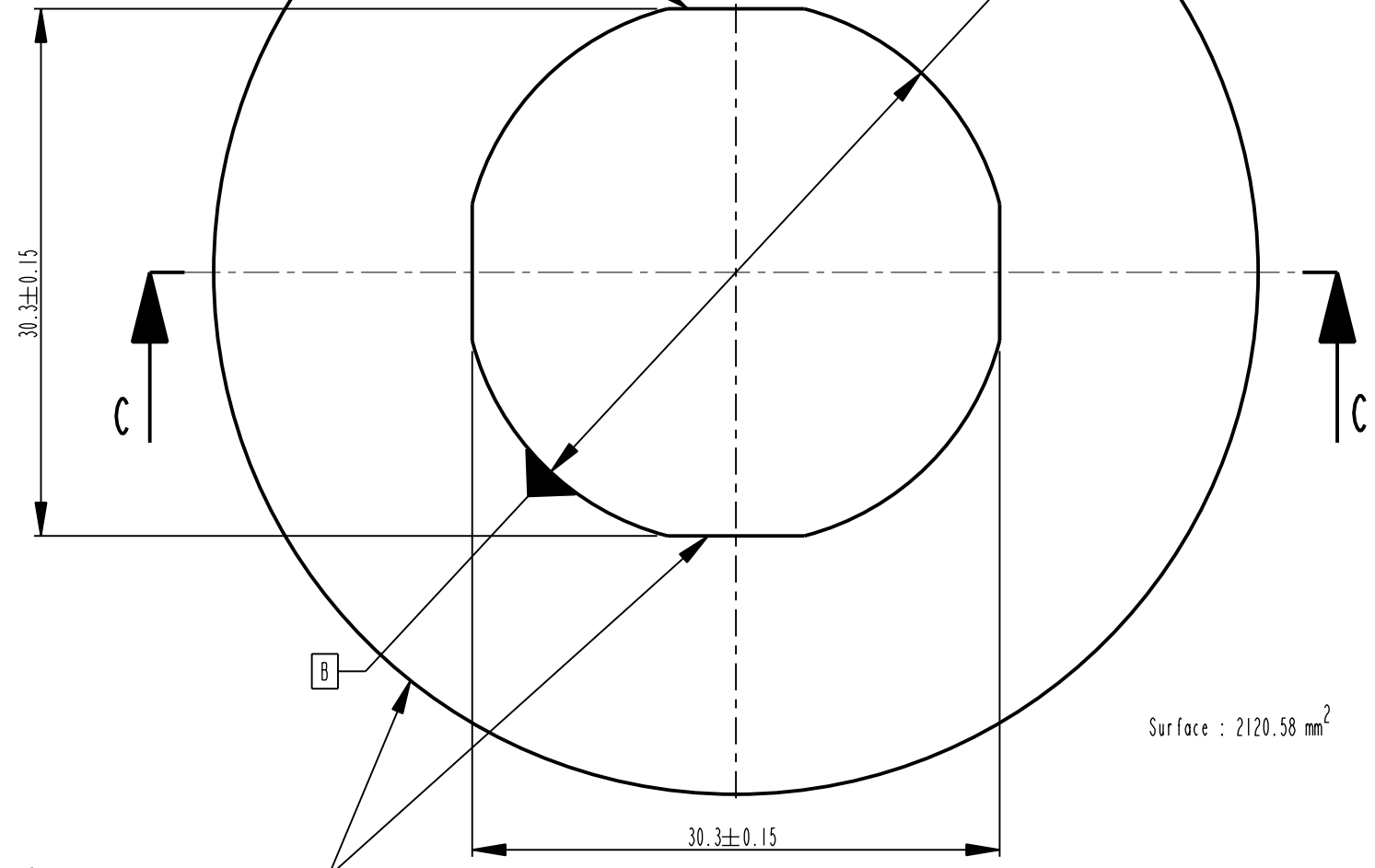
Gravure propre, sans bavures, sans copeaux apparents ni trace de fraise.
Clean engraving, without burs, apparent chips nor trace of trimming cutter.



Zone d'identification du sens de découpe.
(Voir I.0)
Identification area of the cutting direction.
(See I.0)

HORIZONTAL DU MARQUAGE
HORIZONTAL DU MARQUAGE

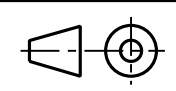
$\varnothing 31.3 \pm 0.15$
 $\varnothing 60 \pm 0.2$
 $\varnothing 0.3 B$



Découpe intérieure et extérieure nette, franche et sans bavures.
Cutting interior and external clear, frank and without burs.

Nota:
Respecter le sens de pénétration du poinçon.
Respect the direction of penetration of the punch

MARQUAGE						
AAV95381	2	1 face réf. GRAVOGRAPH 21863	YELLOW/JAUNE	BLACK/NOIR	YELLOW/JAUNE	SEE/VOIR SPECIF.
AAV95380	2	1 face réf. GRAVOGRAPH 21863	YELLOW/JAUNE	BLACK/NOIR	YELLOW/JAUNE	SEE/VOIR SPECIF.
AAV95379	2	1 face réf. GRAVOGRAPH 21863	YELLOW/JAUNE	BLACK/NOIR	YELLOW/JAUNE	SEE/VOIR SPECIF.
AAV95378	2	1 face réf. GRAVOGRAPH 21863	YELLOW/JAUNE	BLACK/NOIR	YELLOW/JAUNE	SEE/VOIR SPECIF.
AAV95377	2	1 face réf. GRAVOGRAPH 21863	YELLOW/JAUNE	BLACK/NOIR	YELLOW/JAUNE	SEE/VOIR SPECIF.
AAV95376	2	1 face réf. GRAVOGRAPH 21863	YELLOW/JAUNE	BLACK/NOIR	YELLOW/JAUNE	SEE/VOIR SPECIF.
AAV95374	2	1 face réf. GRAVOGRAPH 21863	YELLOW/JAUNE	BLACK/NOIR	YELLOW/JAUNE	SEE/VOIR SPECIF.
AAV95372	2	1 face réf. GRAVOGRAPH 21863	YELLOW/JAUNE	BLACK/NOIR	YELLOW/JAUNE	SEE/VOIR SPECIF.
AAV95371	2	1 face réf. GRAVOGRAPH 21863	YELLOW/JAUNE	BLACK/NOIR	YELLOW/JAUNE	SEE/VOIR SPECIF.
W417156810911	2	1 face réf. GRAVOGRAPH 21863	YELLOW/JAUNE	BLACK/NOIR	YELLOW/JAUNE	SEE/VOIR SPECIF.
W417156810811	2	1 face réf. GRAVOGRAPH 21863	YELLOW/JAUNE	BLACK/NOIR	YELLOW/JAUNE	SEE/VOIR SPECIF.
W417156810711	2	1 face réf. GRAVOGRAPH 21863	YELLOW/JAUNE	BLACK/NOIR	YELLOW/JAUNE	SEE/VOIR SPECIF.
W417156810611	2	1 face réf. GRAVOGRAPH 21863	YELLOW/JAUNE	BLACK/NOIR	YELLOW/JAUNE	SEE/VOIR SPECIF.
W417156810511	2	1 face réf. GRAVOGRAPH 21863	YELLOW/JAUNE	BLACK/NOIR	YELLOW/JAUNE	SEE/VOIR SPECIF.
W417156810411	2	1 face réf. GRAVOGRAPH 21863	YELLOW/JAUNE	BLACK/NOIR	YELLOW/JAUNE	SEE/VOIR SPECIF.
W417156810311	2	1 face réf. GRAVOGRAPH 21863	YELLOW/JAUNE	BLACK/NOIR	YELLOW/JAUNE	SEE/VOIR SPECIF.
W417156810211	2	1 face réf. GRAVOGRAPH 21863	YELLOW/JAUNE	BLACK/NOIR	YELLOW/JAUNE	SEE/VOIR SPECIF.
W417156810111	2	1 face réf. GRAVOGRAPH 21863	YELLOW/JAUNE	BLACK/NOIR	YELLOW/JAUNE	WITHOUT/SANS
PART NUMBER REF. INDUS.	NB. OF LAYER NB. DE COUCHE	Matiere GRAVOPLY II ep. 0.8	PRIME COAT COULEUR DE FOND	COLOR OF MARKING COULEUR DU MARQUAGE	FACE OF PENETRATION OF THE PUNCH FACE DE PENETRATION DU POINÇON	MARKING MARQUAGE



Scale: 1.000

Tolerancing Standard :

Units of measure :



PLAN ETIQ.DISPOSIT.CADEN

PLAN ETIQ.DISPOSIT.CADEN.

Number:

171568100A50

Revision:

02

Sheet:

1/1

All information and data contained in this document are the exclusive property of Schneider Electric Industries SAS and may neither be used nor disclosed without its prior written consent

State: Released for Manufacturing
Printed on 2016/10/28

X-ON Electronics

Largest Supplier of Electrical and Electronic Components

Click to view similar products for [Switch Hardware](#) category:

Click to view products by [Schneider](#) manufacturer:

Other Similar products are found below :

[893102000](#) [LZZ1A](#) [0098.9234](#) [61-9707.7](#) [61-9771.0](#) [M2PA-5011](#) [635401](#) [6PA104](#) [6PA113](#) [6PA147-E6](#) [6PA148-E6](#) [6PA32](#) [6PA9](#) [700106](#)
[700109](#) [700201A56](#) [700303A56](#) [700701264](#) [700C1GRY](#) [700C2GRN](#) [704-6001](#) [704.960.4](#) [704.960.9](#) [704.965.1](#) [704.965.2](#) [704.965.6](#)
[704.966.0](#) [7089-3](#) [71M1048](#) [757200264](#) [778000A56](#) [79215938](#) [MHU35](#) [MHU37](#) [825.003.011](#) [825.005.011](#) [825.053.011](#) [825.055.011](#)
[826.000.071](#) [827.020.011](#) [827.400.021](#) [835.900.023](#) [MML52C10C](#) [MML52E10C](#) [MML72EEK](#) [MML92HGH](#) [MML93K](#) [84211M02CNNS](#)
[84211M02LGRS](#) [84211M02LNNX3](#)