

TITLE  
**INDUCTOR,  
 COMMON MODE**

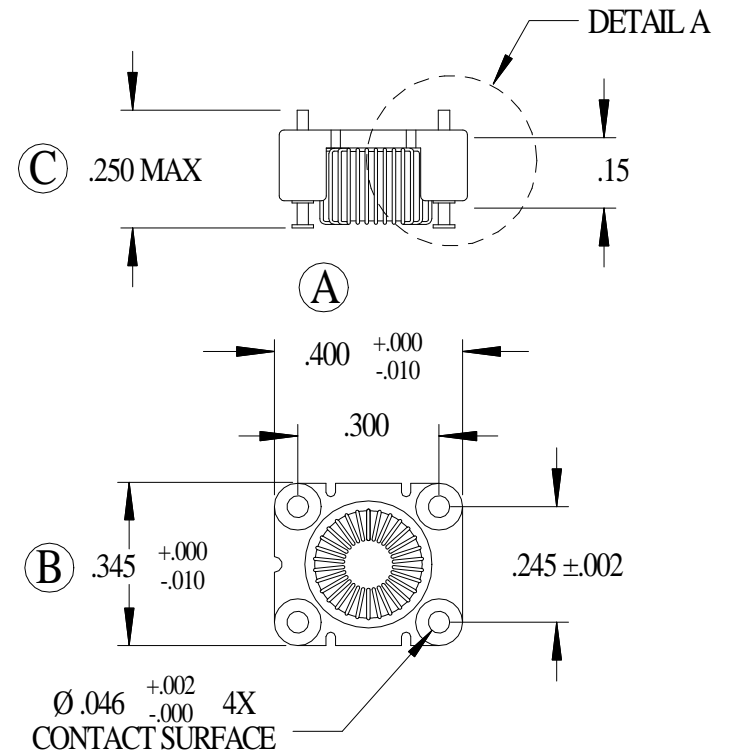
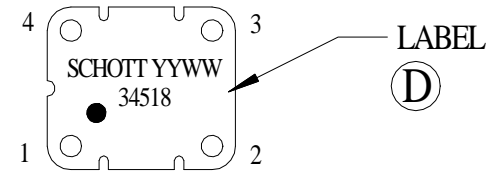
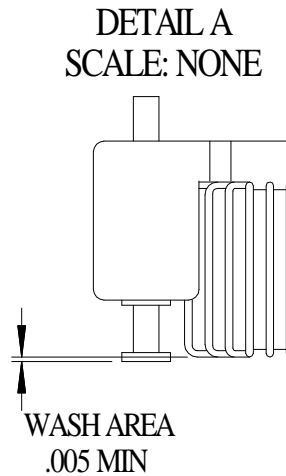
**SCHOTT** CORPORATION  
 1000 PARKERS LAKE ROAD  
 WAYZATA, MN 55391

AGENCY APPROVAL:  
 N/A

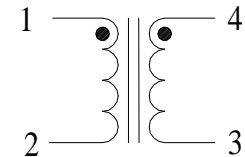
PART NUMBER  
**34518**  
 REV O PAGE 1 END

**SPECIFICATIONS**

1. INDUCTANCE: @ 20 mVrms, 100 kHz  
 1-2 = 3.29 - 6.11 mH
2. LEAKAGE INDUCTANCE: @ 20 mVrms, 100 kHz  
 1-2 tie 3&4 = 0.6 μH MAX
3. DCR: 1-2 = 1 OHM MAX  
 4-3 = 1 OHM MAX
4. HIPOT: 650 Vrms for 6 seconds, 1-4
5. TURNS RATIO: 1-2 : 4-3 = 1 : 1 ± 2%



NOTE:  
 COPLANARITY < .004 (0.10)



TOLERANCES	2 PLACE	3 PLACE	ANGLE
UNLESS OTHERWISE NOTED	± .01	± .005	± °

## **X-ON Electronics**

Largest Supplier of Electrical and Electronic Components

*Click to view similar products for [schott](#) manufacturer:*

Other Similar products are found below :

[SF70R0](#) [SF214R0](#) [SF81R0](#) [SF139R0](#) [34518TR](#) [SF129R0](#) [SF184R0](#) [SF90R0](#) [SF119R0](#)