

Push button for PCB mounting



PMS IP67



PMS Variable height, IP40

See below:

[Approvals and Compliances](#)

Description

- Switches are possible with different heights
- High-quality gold contacts
- Solder terminals

Unique Selling Proposition

- Reliable tactile feedback on input
- Simple assembly
- Long life time

Weblinks

[pdf data sheet](#), [html datasheet](#), [General Product Information](#), [CAD-Drawings](#), [Product News](#), [Detailed request for product](#)

Technical Data

Electrical Data

| | |
|--------------------------|--|
| Switching Voltage | 30 VAC/ 42 VDC |
| Switching Current | 50 mA |
| Rated Switching Capacity | 0.12 W |
| Lifetime | > 1 million actuations at Rated Switching Capacity |
| Contact Resistance | < 50 mΩ < 150 mΩ after lifetime |
| Insulation Resistance | > 100 MΩ |
| Duration of Bounce | typ. 0.15 ms |

Mechanical Data

| | |
|-------------------|--|
| Actuating Force | IP40 : 1.8 ± 0.4 N IP67 : 2.2 ± 0.4 N |
| Actuating Travel | 0.35 ± 0.1 mm |
| End Stop Strength | > 100 N |
| Lifetime | > 1 million actuations |

Climatical Data

| | |
|-----------------------|-----------------|
| Operating Temperature | -40 °C to 85 °C |
| Storage Temperature | -40 °C to 85 °C |
| IP-Protection | IP40 / IP67 |

Soldering Data

| | |
|------------------------------|--|
| Soldering Methods | Wave |
| Solderability | 245 °C / 5 sec (IEC 60068-2-58 Test Td) |
| Resistance to Soldering Heat | 260 °C / 10 sec (IEC 60068-2-58 Test Td) |

Material

| | |
|-----------------------|----------------------------|
| Sealing membrane IP67 | VMQ |
| Contact Material Gold | CuZn37 1.5 μm Ni 0.5 μm Au |
| Terminals | CuZn37 SnNi |
| Socket | Thermoplastic (PA 4.6) |
| Actuator | PA4 |
| Cover of Actuator | X 12 CrNi 17 7 |
| Elongated Button | Thermoplastic (PC) |

Approvals and Compliances

Detailed information on product approvals, code requirements, usage instructions and detailed test conditions can be looked up in [Details about Approvals](#)

SCHURTER products are designed for use in industrial environments. They have approvals from independent testing bodies according to national and international standards. Products with specific characteristics and requirements such as required in the automotive sector according to IATF 16949, medical technology according to ISO 13485 or in the aerospace industry can be offered exclusively with customer-specific, individual agreements by SCHURTER.




Application standards

Application standards where the product can be used

| Organization | Design | Standard | Description |
|--------------|--------------------------------|----------------|---|
| | Designed for applications acc. | IEC/UL 62368-1 | Audio/video, information and communication technology equipment - Part 1: Safety requirements |

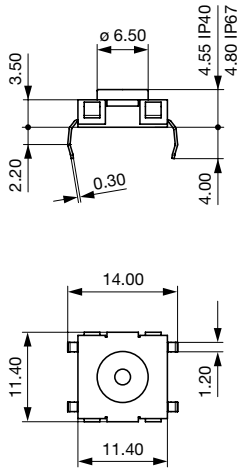
Compliances

The product complies with following Guide Lines

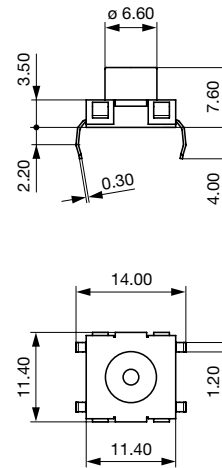
| Identification | Details | Initiator | Description |
|--|------------|-------------|---|
|  | RoHS | SCHURTER AG | Directive RoHS 2011/65/EU, Amendment (EU) 2015/863 |
|  | China RoHS | SCHURTER AG | The law SJ / T 11363-2006 (China RoHS) has been in force since 1 March 2007. It is similar to the EU directive RoHS. |
|  | REACH | SCHURTER AG | On 1 June 2007, Regulation (EC) No 1907/2006 on the Registration, Evaluation, Authorization and Restriction of Chemicals 1 (abbreviated as "REACH") entered into force. |

Dimension [mm]

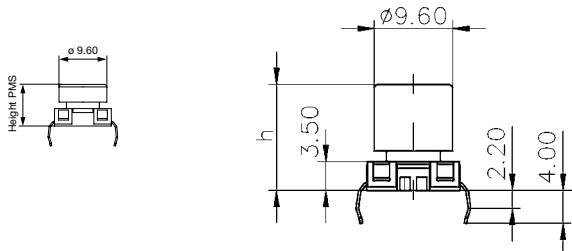
PMS PCB Base module



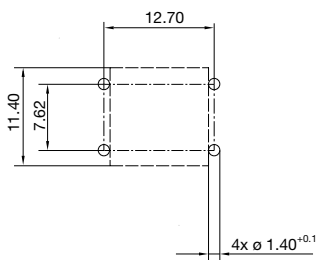
PMS PCB Variable height



PMS PCB with elongated button

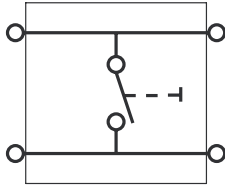


Drilling diagrams



Diagrams

Circuit Diagram SMS/PMS



All Variants

| IP Protection Class Front Side | Terminal | Type | Overall height / Color | Order Number |
|--------------------------------|----------|-----------------|---------------------------|--------------|
| IP40 | - | Short actuator | - | 1241.1602 |
| IP67 | - | Short actuator | - | 1241.1608 |
| IP40 | - | Long actuator | - | 1241.1614 |
| IP67 | - | Long actuator | - | 1241.1620 |
| IP40 | - | Height variable | 8.35 mm / yellow | 1241.1624.1 |
| IP40 | - | Height variable | 14.35 mm / yellow + black | 1241.1624.11 |
| IP40 | - | Height variable | 9.10 mm / orange | 1241.1624.2 |
| IP40 | - | Height variable | 15.10 mm / orange + black | 1241.1624.21 |
| IP40 | - | Height variable | 9.85 mm / red | 1241.1624.3 |
| IP40 | - | Height variable | 15.85 mm / red + black | 1241.1624.31 |
| IP40 | - | Height variable | 10.60 mm / blue | 1241.1624.4 |
| IP40 | - | Height variable | 16.60 mm / blue + black | 1241.1624.41 |
| IP40 | - | Height variable | 11.35 mm / green | 1241.1624.5 |
| IP40 | - | Height variable | 17.35 mm / green + black | 1241.1624.51 |
| IP40 | - | Height variable | 12.10 mm / grey | 1241.1624.6 |
| IP40 | - | Height variable | 18.10 mm / grey + black | 1241.1624.61 |
| IP40 | - | Height variable | 12.85 mm / black | 1241.1624.7 |
| IP40 | - | Height variable | 18.85 mm / black + black | 1241.1624.71 |
| IP40 | - | Height variable | 13.60 mm / white | 1241.1624.8 |
| IP40 | - | Height variable | 19.60 mm / white + black | 1241.1624.81 |
| IP67 | - | Height variable | 8.35 mm / yellow | 1241.1625.1 |
| IP67 | - | Height variable | 14.35 mm / yellow + black | 1241.1625.11 |
| IP67 | - | Height variable | 9.10 mm / orange | 1241.1625.2 |
| IP67 | - | Height variable | 15.10 mm / orange + black | 1241.1625.21 |
| IP67 | - | Height variable | 9.85 mm / red | 1241.1625.3 |
| IP67 | - | Height variable | 15.85 mm / red + black | 1241.1625.31 |
| IP67 | - | Height variable | 10.60 mm / blue | 1241.1625.4 |
| IP67 | - | Height variable | 16.60 mm / blue + black | 1241.1625.41 |
| IP67 | - | Height variable | 11.35 mm / green | 1241.1625.5 |
| IP67 | - | Height variable | 17.35 mm / green + black | 1241.1625.51 |
| IP67 | - | Height variable | 12.10 mm / grey | 1241.1625.6 |
| IP67 | - | Height variable | 18.10 mm / grey + black | 1241.1625.61 |
| IP67 | - | Height variable | 12.85 mm / black | 1241.1625.7 |
| IP67 | - | Height variable | 18.85 mm / black + black | 1241.1625.71 |
| IP67 | - | Height variable | 13.60 mm / white | 1241.1625.8 |

| IP Protection Class Front Side | Terminal | Type | Overall height / Color | Order Number |
|--------------------------------|----------|-----------------|--------------------------|--------------|
| IP67 | - | Height variable | 19.60 mm / white + black | 1241.1625.81 |

Most Popular.

Availability for all products can be searched real-time:<https://www.schurter.com/en/Stock-Check/Stock-Check-SCHURTER>

Starting with 14:50 mm the heights are realized with an additional (second) elongated button in black color

| | |
|-----------------------|---------------------------|
| Packaging unit | loose in boxes (100 pcs.) |
|-----------------------|---------------------------|

X-ON Electronics

Largest Supplier of Electrical and Electronic Components

Click to view similar products for [Switch Bezels](#) / [Switch Caps](#) category:

Click to view products by [Schurter](#) manufacturer:

Other Similar products are found below :

[896809000](#) [LW1A-B2-R](#) [LW2A-B1-G](#) [704.604.4](#) [704.955.3](#) [F1403](#) [7527](#) [760203000](#) [760503000](#) [766601000](#) [785105000](#) [785106000](#)
[79211759](#) [MG12KB](#) [MH11](#) [MH13](#) [MHU31](#) [MJ1216](#) [MJ1226](#) [MJ33](#) [MJ612](#) [MJ626](#) [MJ627](#) [9001T8BK](#) [908-1634](#) [92-343.200](#) [92-343.400](#)
[95804.920](#) [95CAP-011](#) [95CAP-112](#) [11-932.7](#) [99-901.9](#) [99-902.9](#) [99-909.4](#) [99-909.5](#) [99-920.8](#) [A0261A](#) [11-931.2](#) [11-932.5](#) [11-936](#)
[AKTSC22B](#) [AT496H](#) [AW-RF8](#) [161006](#) [1825068-6](#) [184-1872](#) [187-1872](#) [188-1471](#) [1DFBLK](#) [1D-GRY](#)