

FUSEHOLDERS

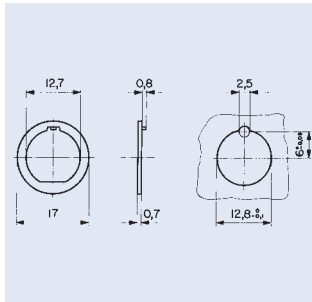
Accessories

Accessories for fuseholders



Anti-rotation washer for fuseholders for round mounting holes

Order No.
0696.0033 *

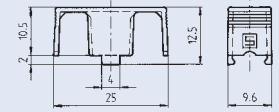


Transparent cover
0853.0551



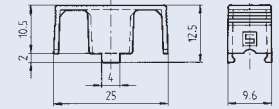
Reflow-Cover
0853.0571

Order No.
0853.0551 * / 0853.0571 *



Reflow-Cover with clamp
0853.0576

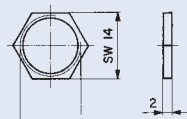
Order No.
0853.0576 *



0583.0007

Metal nut

Order No.
0098.0026 *

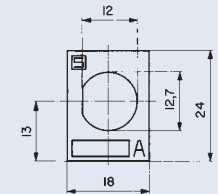


M 12,7 x 1,5
double start thread



Marking plate self-adhesive

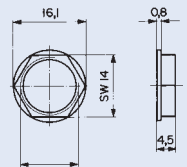
Order No.
0880.0001 *



0583.0016

Plastic-nut (max. torque 1,2 Nm)

Order No.
0098.0093 *

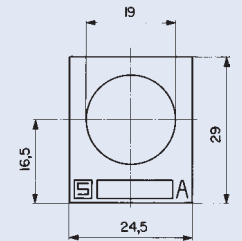


M 12,7 x 1,5
double start thread



Marking plate self-adhesive

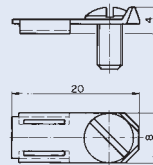
Order No.
0880.0002 *



straight

Screw-adapter for quick connect-terminals 6,3 x 0,8 mm

Order No.
0750.0141 *

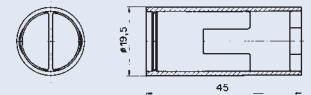


Insulating covers

a) to fuseholder types FIZ/FUL



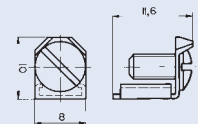
b) to fuseholders with a socket diameter of 13 mm



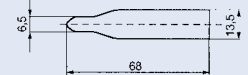
angled

Screw-adapter for quick connect-terminals 6,3 x 0,8 mm

Order No.
0750.0142 *

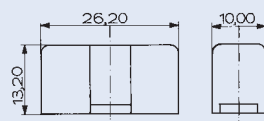


Order No.
a) 0859.0046 *
b) 0859.0080 *



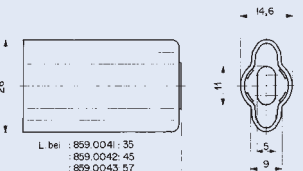
Cover for fuseholders
OG 0751.0052/62,
UHB 0031.5101, OG 0031.8001,
UH 0031.5001, 0031.5010

Order No.
0853.9561 * 1,6 W
0853.9562 * 2,5 W



Insulating cover for fuseholders FEU

Order No.
0859.0041 for FEU 0031.1653 *
0859.0042 for FEU 0031.1673 *
0031.1681 *
0859.0043 for FEU 0031.1694 *



* Packaging unit 100 pieces

X-ON Electronics

Largest Supplier of Electrical and Electronic Components

Click to view similar products for [Fuse Holder Accessories](#) category:

Click to view products by [Schurter](#) manufacturer:

Other Similar products are found below :

[BK/1A1337](#) [1A1853](#) [1A4421](#) [1A5220](#) [903-048](#) [1A1337](#) [1A4544](#) [1A5220-01](#) [CO2-10](#) [CO3-03](#) [348897](#) [B072-7007](#) [BK/1A4421](#) [X30110](#)
[09030012H](#) [09050023H](#) [00970021HXNVDL](#) [00BS0232P](#) [CO2-04](#) [BK1A1853](#) [BK9834](#) [00970053XP](#) [3566C](#) [00970053H](#) [04450718ZX900](#)
[CH10CL](#) [BP/FP-3](#) [58600000005](#) [33-012C](#) [880140](#) [00970023S](#) [880150](#) [PDM71009ZXM](#) [B109-7091-4](#) [B109-7091-6](#) [B109-7091-5](#)
[CFBAR2-M8XSP](#) [901-524](#) [CVR-RH-25100](#) [LFH60030FBC](#) [03540514Z](#) [03540526Z](#) [03540531Z](#) [03540541Z](#) [03540525Z](#) [03540537Z](#)
[03540539Z](#) [03540540Z](#) [FEH](#) [CC2/J](#)