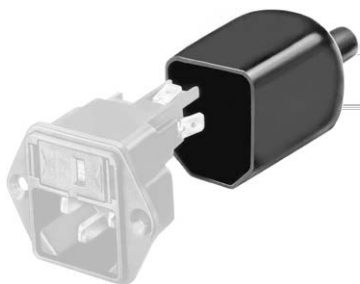


Rear Cover



E.g. DG11 with rear cover

See below:  
[Approvals and Compliances](#)

**Description**

- The terminals of the SCHURTER appliance couplers can be protected against unintentional contact by the use of an insulation cover on the rear side. ,
- The flexible rear covers are made of black PVC and can easily be mounted from the rear to the corresponding appliance couplers.
- The covers do not insulate or hold in position live parts of opposite polarity.
- The protective covers may not be worked with hot air.

**References**

Mating cover to

**Weblinks**

[pdf data sheet](#), [html datasheet](#), [General Product Information](#), [Approvals](#), [Distributor-Stock-Check](#), [Accessories](#), [Detailed request for product](#)

**Approvals and Compliances**

Detailed information on product approvals, code requirements, usage instructions and detailed test conditions can be looked up in [Details about Approvals](#)

SCHURTER products are designed for use in industrial environments. They have approvals from independent testing bodies according to national and international standards. Products with specific characteristics and requirements such as required in the automotive sector according to IATF 16949, medical technology according to ISO 13485 or in the aerospace industry can be offered exclusively with customer-specific, individual agreements by SCHURTER.



**Application standards**

Application standards where the product can be used

Organization	Design	Standard	Description
	Designed for applications acc.	IEC/UL 62368-1	Audio/video, information and communication technology equipment - Part 1: Safety requirements

**Compliances**

The product complies with following Guide Lines

Identification	Details	Initiator	Description
	RoHS	SCHURTER AG	Directive RoHS 2011/65/EU, Amendment (EU) 2015/863
	REACH	SCHURTER AG	On 1 June 2007, Regulation (EC) No 1907/2006 on the Registration, Evaluation, Authorization and Restriction of Chemicals 1 (abbreviated as "REACH") entered into force.

**All Variants**

Suitable for	Order Number
C20F, C22F, DC11, DC12, KEA, KEB1, 1092, 4707, 4721, 4723, 4793, 4798, 5130, 5200, 5220, 5707, 6200, 6202, 6205, 6220, 6600-3, 6600-4, 6600-5, 6602-4	0859.0047
FGS, KFS, KFX, 5003, 5110, 5120, 5123, 5124, 6067, 6100-3, 6100-4, 6102-3, 6102-5	0859.0048
DC12, KEC, KFA, KFB1, KFC	0859.0072
FKH, FKHD, FK1, FKID, KD, 5145, 6135, 6145, 6762, 6765	0859.0074
KEB2, KFB2, 0723, 4719, 4797	0859.0075
DD12, DD14, EC11, KE, KM, KMF	0859.0076
CD	0859.0077
CE, EC12, KE	0859.0108

Suitable for	Order Number
CG, DF11, DF12, EF11, KG	0859.0109
1061, 6010, 6015, 6061, 6062, 6063, 6065, 6066, 6067, 6100-3, 6100-4, 6102-3, 6102-5, 6110-3, 6110-4, 6120-3, 6120-5	4311.9401
1061, 6010, 6015, 6061, 6062, 6063, 6065, 6066, 6067, 6100-3, 6100-4, 6102-3, 6102-5, 6110-3, 6110-4, 6120-3, 6120-5	4311.9402
DC11, KEB1, 1060, 1062, 1064, 1065, 1066, 1074, 1092, 4707, 6200, 6202, 6205, 6220	4311.9403

For new design please use: <https://www.schurter.com/en/datasheet/RC320>

Most Popular:

Availability for all products can be searched real-time: <https://www.schurter.com/en/Stock-Check/Stock-Check-SCHURTER>

**Packaging unit** 100 Pcs

## X-ON Electronics

Largest Supplier of Electrical and Electronic Components

*Click to view similar products for [Switch Fixings](#) category:*

*Click to view products by [Schurter](#) manufacturer:*

Other Similar products are found below :

[893102000](#) [00-5150](#) [LZZ1A](#) [0098.9234](#) [M2PA-5011](#) [630155](#) [635401](#) [6PA113](#) [6PA147-E6](#) [6PA148-E6](#) [6PA32](#) [6PA9](#) [700109](#) [700303A56](#)  
[700C1GRY](#) [700C2GRN](#) [704-6001](#) [704.960.4](#) [704.960.9](#) [704.965.2](#) [704.965.6](#) [704.966.0](#) [7089-3](#) [710082-B11](#) [71M1048](#) [757200264](#)  
[764300000](#) [MHU35](#) [MHU37](#) [807039-1](#) [825.003.011](#) [825.005.011](#) [825.053.011](#) [825.055.011](#) [826.000.071](#) [827.020.011](#) [827.400.021](#)  
[835.900.023](#) [MML52C10C](#) [MML52E10C](#) [MML92HGH](#) [MML93K](#) [84211M02CNNS](#) [84212M02CNNS](#) [84217A8.0LNOS](#) [842.500.011](#)  
[843.000.011](#) [843187-000](#) [843487-000](#) [84-901](#)