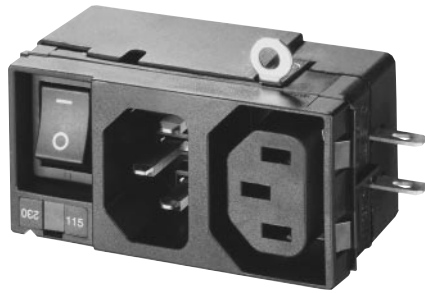


PMM / KP / 4300 AC Inlet / outlet For Pcb or Panel Mounting



NEW

Simultaneously switch equipment and peripherals on or off



PMM for panel mounting



KP for pcb mounting (see page 33)



4300 for panel mounting

- For "cold" connections 70°C, Protection Class I

PMM for panel mounting

- AC inlet/outlet with integral 1-pole or 2-pole on/off line switch, in rush max., 100A 3-4ms, followed by continuous current 5A, on/off cycles 10,000 acc. to EN 61058-1
- Simultaneously switch equipment and peripherals on or off
- Independent, 2 position voltage selector optional (voltage markings 115 and 230)
- Snap-in panel mount from rear
- Solder/quick-connect terminals .187 x .032" (4.8 x 0.8mm); solder terminals (1.5 mm²) for voltage selector
- Ground terminal screw mounts to panel (ø4mm solder lug, +0.05)
- Rear insulation cover protects against inadvertent electrical contact
- With internal connections (except voltage selector)
- Ideal for switch mode power supplies (SMPS)
- Material: thermoplastic, PA6 (UL 94V-0)
Prongs and terminals: copper-alloy, corrosion proof

UL recognition	10A/250V	File #E96454
CSA certification	10A/250V	File #LR38456
VDE approval	10A/250V	File #6090, expert report

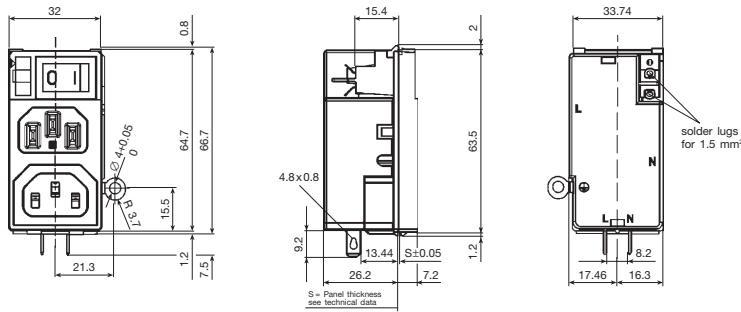
4300 for panel mounting

- Snap-in panel mount from front
- Solder/quick-connect terminals .187 x .032" (4.8 x 0.8mm)
- Available with or without internal connections between ground terminals
- Material: thermoplastic, polyamid 6.6
Prongs and terminals: brass, nickel-plated

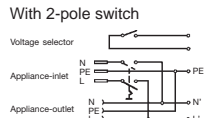
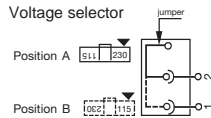
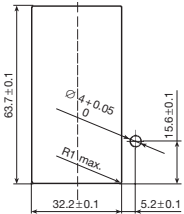
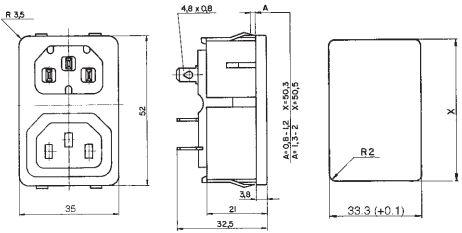
UL recognition	10A/250V	File #E103791
CSA certification	10A/250V	File #LR73165
VDE approval	10A/250V	File #3193, expert report

Standards: IEC 60536; IEC 320/C14/F; EN 60320

PMM panel mount



4300, panel mount



Order Numbers

PMM 1-pole	PMM 2-pole	Voltage selector	Panel thickness	4300	Type of Internal Connection	Terminal Type
4307.3001	4307.4001	without	0.8 mm	4300.0301	without internal connection	quick-connect .187 x .032"
4307.3211	4307.4211	with (115/230)	0.8 mm	(0712)	between ground terminals	(4.8 x 0.8mm)
4307.3004	4307.4004	without	1.5 mm	4300.0303	with internal connection	quick-connect .187 x .032"
4307.3214	4307.4214	with (115/230)	1.5 mm	(0712)	between ground terminals	(4.8 x 0.8mm)

X-ON Electronics

Largest Supplier of Electrical and Electronic Components

Click to view similar products for [AC Power Entry Modules](#) category:

Click to view products by [Schurter](#) manufacturer:

Other Similar products are found below :

[0098.0050](#) [6167.0002](#) [6609100-2](#) [7-6609955-2](#) [FKI2-50-6/M5](#) [FN361-6-06](#) [FN389-4-22](#) [FN9226B-6-02](#) [FN9233S1-10-06](#) [FN9233S1-8-06](#)
[FN9233S1B-8-06](#) [FN9233S1R-1-06](#) [FN9233S1R-12-06](#) [FN9233SB-1-06](#) [FN9233SB-12-06](#) [FN9233SB-8-06](#) [FN9233SR-10-06](#) [FN9244B-15-06HI](#) [FN9244EB-3-06](#) [FN9244EB-8-06](#) [FN9244ER-15-06](#) [FN9244ER-8-06](#) [FN9244ES1-8-06](#) [FN9244ESB-8-06](#) [FN9244R-12-06](#)
[FN9244S1-12-06](#) [FN9244S1R-3-06](#) [FN9244SB-8-06](#) [FN9244SR-6-06](#) [FN9244U-3-06](#) [FN9244U-8-06](#) [8-6609940-2](#) [PE00SSSXB](#) [Fuse-H-EUR-1](#) [Fuse-H-USA-1](#) [PM00XD000](#) [A-0701-HT-H](#) [15EJMS8](#) [1-6609941-2](#) [200JM6-2](#) [CA121003-6](#) [SK-1015\(F1-5\)](#) [161-R3015-E](#) [1-6609153-2](#) [FN323-1-05](#) [FN9233B-8-06](#) [FN9233EB-1-06](#) [FN9233ES1R-10-06](#) [FN9233R-12-06](#) [FN9233S-10-06](#)