



Description

- Panel Mount:
Snap-in or screw-on mounting from front side
- 2 Functions:
Appliance Inlet Protection class I, Line filter in standard and medical version
- Quick connect terminals 6.3 x 0.8 mm

Approvals

- VDE Certificate Number: 40035745
- UL File Number: E72928
- CCC File Number: 2006010204191430

Characteristics

- Ultra-compact design
- All single elements are already wired
- Suitable for use in equipment according to IEC/UL 60950
- Suitable for use in medical equipment according to IEC/UL 60601-1

Other versions on request

- Capacity CX 100 nF
- Medical version M80

References

Alternative: version without line filter [6100-3](#)

Weblinks

[pdf-datasheet](#), [html-datasheet](#), [General Product Information](#), [RoHS](#), [CHINA-RoHS](#), [REACH](#), [Mating Connectors](#), [e-Shop](#), [SCHURTER-Stock-Check](#), [Distributor-Stock-Check](#), [Accessories](#), [Wire Harnessing](#)

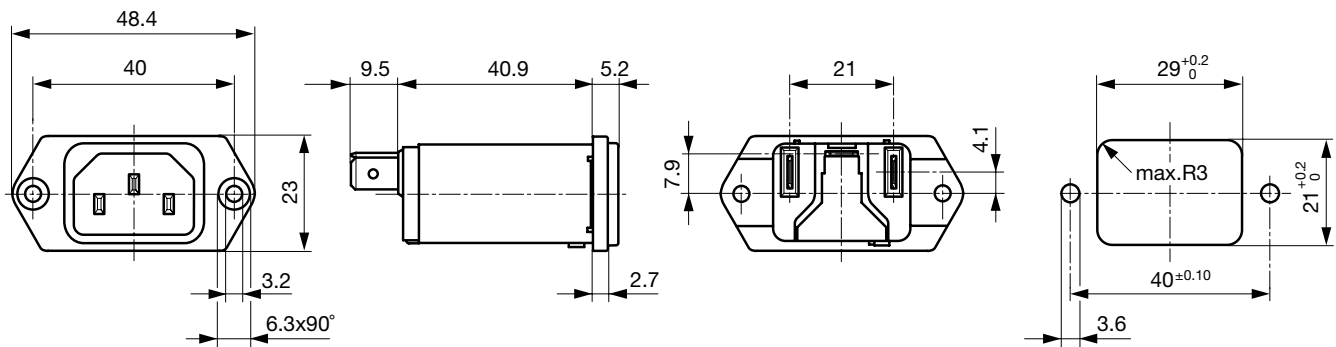
Technical Data

Ratings IEC	1 - 10A @ Ta 40 °C / 250 VAC; 50Hz
Ratings UL/CSA	1 - 15A @ Ta 40 °C / 125 VAC; 60Hz
Leakage Current	standard < 0.5 mA (250 V / 60Hz) medical < 5 µA (250 V / 60 Hz)
Dielectric Strength	> 1.7 kVDC between L-N > 2.7 kVDC between L/N-PE Test voltage (2 sec)
Allowable Operation Temp.	-25 °C to 85 °C
Climatic Category	25/085/21 acc. to IEC 60068-1
Degree of Protection	from front side IP 40 acc. to IEC 60529
Protection Class	Suitable for appliances with protection class I acc. to IEC 61140
Terminal	Quick connect terminals 6.3 x 0.8 mm
Panel Thickness s	Screw: max 5 mm Mounting screw torque max 0.5 Nm Snap-in: 0.8 mm to 3 mm
Material: Housing	Thermoplastic, black, UL 94V-0

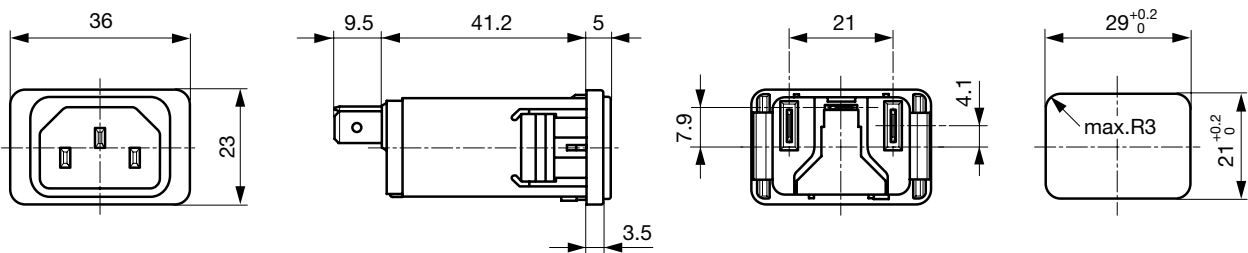
Appliance-Inlet/-Outlet	C14 acc. to IEC 60320, UL 498, CSA C22.2 no. 42 (for cold conditions) pin-temperature 70 °C, 10A, Protection Class I
Line Filter	Standard and Medical Version, IEC 60939, UL 1283, CSA C22.2 no. 8 Technical Details
MTBF	> 3'100'000h acc. to MIL-HB-217 F

Dimension

Screw-on mounting



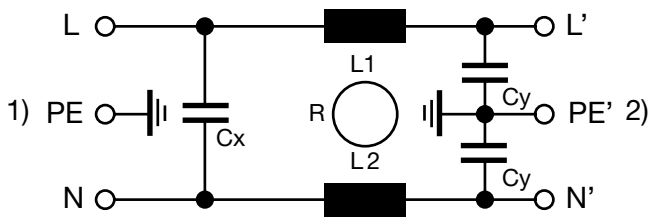
Snap-in mounting

**Technical Data of Filter-Components**

Rated Current [A]	Filter-Type	Inductances L [mH]	Capacitance CX [nF]	Capacitance CY [nF]	R [MΩ]
1	Standard Version	2 x 11	47	2.2	-
2	Standard Version	2 x 4	47	2.2	-
3	Standard Version	2 x 2.5	47	2.2	-
4	Standard Version	2 x 1.6	47	2.2	-
6	Standard Version	2 x 0.7	47	2.2	-
8	Standard Version	2 x 0.6	47	2.2	-
10	Standard Version	2 x 0.4	47	2.2	-
15	Standard Version	2 x 0.1	47	2.2	-
1	Medical Version (M5)	2 x 11	47	-	1
2	Medical Version (M5)	2 x 4	47	-	1
3	Medical Version (M5)	2 x 2.5	47	-	1
4	Medical Version (M5)	2 x 1.6	47	-	1
6	Medical Version (M5)	2 x 0.7	47	-	1
8	Medical Version (M5)	2 x 0.6	47	-	1
10	Medical Version (M5)	2 x 0.4	47	-	1
15	Medical Version (M5)	2 x 0.1	47	-	1
10	Standard and Medical Version	2 x 0.4	47	2.2	1

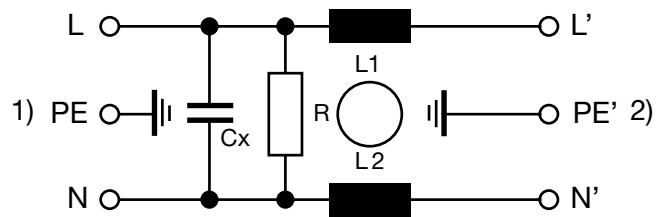
Diagrams

Standard version



1) Line
2) Load

Medical version



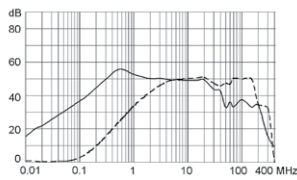
1) Line
2) Load

Attenuation Loss

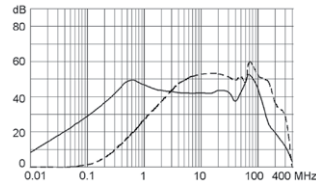
---- differential mode ____ common mode

Standard version

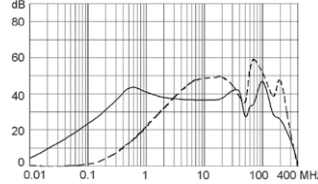
1 A



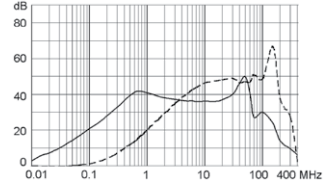
2 A



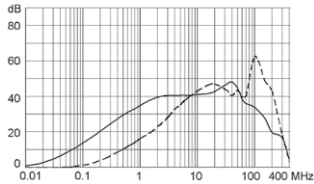
3 A



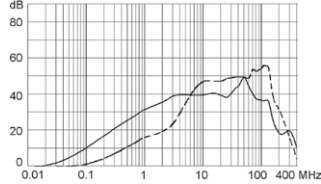
4 A



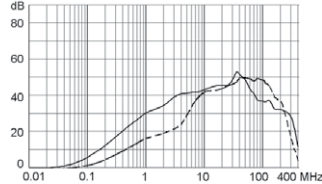
6 A



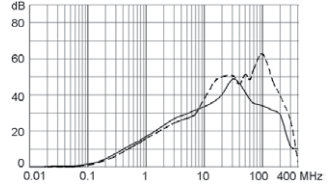
8 A



10 A

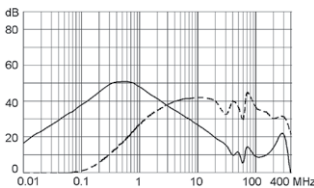


15 A

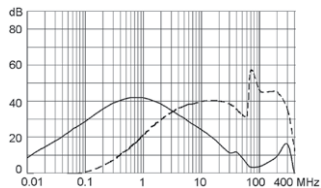


Medical version (M5)

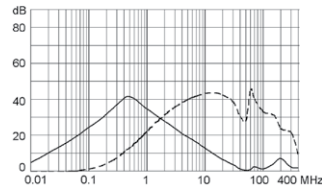
1 A



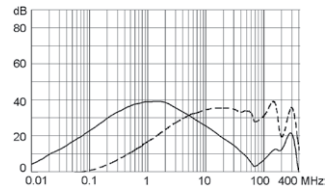
2 A



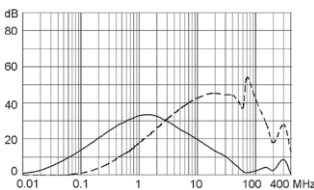
3 A



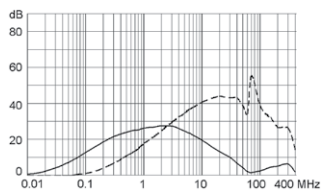
4 A



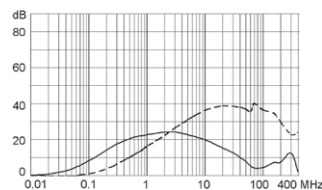
6 A



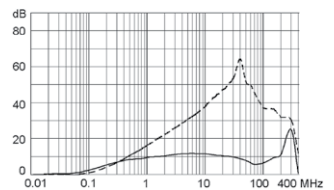
8 A



10 A



15 A



All Variants

Rated Current [A]	Filter-Type	Panel mounting	Order Number	
1	Standard Version	Snap-in	5110.0143.1	■
2	Standard Version	Snap-in	5110.0243.1	■
3	Standard Version	Snap-in	5110.0343.1	■
4	Standard Version	Snap-in	5110.0443.1	■
6	Standard Version	Snap-in	5110.0643.1	■
8	Standard Version	Snap-in	5110.0843.1	
10	Standard Version	Snap-in	5110.1043.1	■
15	Standard Version	Snap-in	5110.1543.1	■
1	Standard Version	Screw	5110.0133.1	■
2	Standard Version	Screw	5110.0233.1	
3	Standard Version	Screw	5110.0333.1	■
4	Standard Version	Screw	5110.0433.1	
6	Standard Version	Screw	5110.0633.1	■
8	Standard Version	Screw	5110.0833.1	
10	Standard Version	Screw	5110.1033.1	■
15	Standard Version	Screw	5110.1533.1	■
1	Medical Version (M5)	Snap-in	5110.0143.3	
2	Medical Version (M5)	Snap-in	5110.0243.3	
3	Medical Version (M5)	Snap-in	5110.0343.3	
4	Medical Version (M5)	Snap-in	5110.0443.3	
6	Medical Version (M5)	Snap-in	5110.0643.3	
8	Medical Version (M5)	Snap-in	5110.0843.3	
10	Medical Version (M5)	Snap-in	5110.1043.3	■
15	Medical Version (M5)	Snap-in	5110.1543.3	■
1	Medical Version (M5)	Screw	5110.0133.3	
2	Medical Version (M5)	Screw	5110.0233.3	
3	Medical Version (M5)	Screw	5110.0333.3	
4	Medical Version (M5)	Screw	5110.0433.3	
6	Medical Version (M5)	Screw	5110.0633.3	■
8	Medical Version (M5)	Screw	5110.0833.3	
10	Medical Version (M5)	Screw	5110.1033.3	■
15	Medical Version (M5)	Screw	5110.1533.3	■

■ Most Popular.

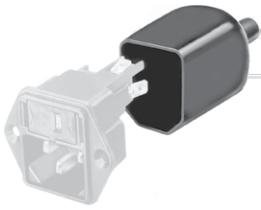
Availability for all products can be searched real-time:<http://www.schurter.com/en/Stock-Check/Stock-Check-SCHURTER>

Packaging unit

10 Pcs

Accessories

Description



Assorted Covers
Rear Cover



Wire Harness
Wire harness for SCHURTER products



Cord retaining kits
Cord retaining strain relief

Mating Outlets/Connectors

Category / Description



Appliance Outlet Overview complete

IEC Appliance Outlet F, Screw-on Mounting, Front Side, Solder Terminal	4787
IEC Appliance Outlet F, Snap-in Mounting, Front Side, Solder or Quick-connect Terminal	4788
IEC Appliance Outlet F or H, Screw-on Mounting, Front Side, Solder, PCB or Quick-connect Terminal	5091

Appliance Outlet further types to 5110



Connector Overview complete

IEC Connector C15A, Rewireable, Straight	0102
IEC Connector C15A, Rewireable, Straight	0102-G
IEC Connector C15A, Rewireable, Angled	0112
IEC Connector C13, Rewireable, Angled	4012
IEC Connector C13, Rewireable, Straight	4022

Connector further types to 5110

X-ON Electronics

Largest Supplier of Electrical and Electronic Components

Click to view similar products for [schurter](#) manufacturer:

Other Similar products are found below :

[4420.0380](#) [4310.0028](#) [0034.7115](#) [0001.1007.PT](#) [0034.3406](#) [0034.9889](#) [7040.3140](#) [FMAC-0934-3610](#) [FMAD-0931-0810](#) [FMW-65-0005](#)
[1241.3663](#) [1241.2506](#) [1301.9211](#) [DC11.0001.301](#) [9632.5100](#) [FMBC-0994-1000](#) [CE20.6100.151](#) [3-101-015](#) [4400.0344](#) [4420.0361](#)
[4752.4000](#) [5500.2605.01](#) [3404.2330.11](#) [3405.0176.11](#) [KD13.1101.105](#) [DC12.5102.101](#) [4303.1061](#) [4420.0210](#) [4430.1129](#) [4430.1892](#) [DKIP-](#)
[0229-1005](#) [091132B](#) [5500.2267](#) [6162.0083](#) [8020.5081](#) [5120.1006.0.21](#) [5130.2101](#) [CD24.4101.151](#) [CD44.4199.151](#) [AS168X-CB2H030](#)
[6136.0137.0210](#) [FMBC-A91C-1610](#) [FMAC-0932-2510](#) [1068.1012.1110001](#) [TA35-CFTBLJ04C0](#) [1241.2903.002](#) [1241.6623.1124000](#)
[1241.3008](#) [0001.2535](#) [KD13.1101.151.21](#)