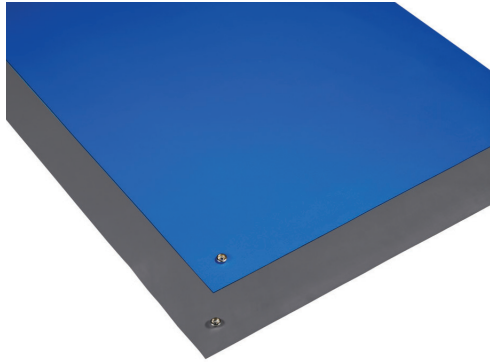


# 8800 Series Dissipative Rubber Mats and Rolls

8800 Series Dissipative Rubber Mats and Rolls meet ANSI/ESD S20.20 required limit and the recommendation of work surface standard ANSI/ESD S4.1. The product is constructed using a top color layer of static dissipative neoprene rubber laminated to a bottom black layer of conductive neoprene rubber. Both layers are made from vulcanized synthetic rubber, which offers resistance to oil, grease and most common solvents. They offer increased resistance to heat and hot solder as compared to vinyl or olefin materials. Non-standard sizes are available on a custom order basis. Compatible with Continuous or Constant Monitors.



Properties	Typical Value	Test Method
Material	Top and bottom layers - Neoprene	
*Thickness	0.065" (1.7 mm)	
Hardness	65 Shore A	
Color Top Layer Resistances		
Surface to Ground (Rtg)	1 x 10 <sup>6</sup> to < 1 x 10 <sup>9</sup> ohms	ANSI/ESD S4.1 & ESD TR53
Surface to Surface (Rtt)	1 x 10 <sup>6</sup> to < 1 x 10 <sup>9</sup> ohms	ANSI/ESD S4.1 & ESD TR53
Tolerance	Width +/- 0.250" Length +/- 0.250"	
*Color	Blue and Gray	

\*Color, texture and thickness may vary between lots and mills.

### RoHS 2, REACH, and Conflict Minerals Statement

None of the RoHS 2 restricted materials or REACH substances of very high concern as of 2014/12/17, or Conflict Minerals are intentionally added in manufacturing this product. Ref: European Union Directive 2011/65/EU and Regulation (EC) No. 1907/2006/CE. See [SCS Warranty, Limitation of Liability and Remedies](#)

### Table Mat Kit Item Numbers

Size	Blue	Gray
2' x 4' (0.6 m x 1.2 m)	<a href="#">8811</a>	<a href="#">8810</a>
3' x 4' (0.9 m x 1.2 m)	<a href="#">8831</a>	<a href="#">8830</a>
2' x 3' (0.6 m x 0.9 m)	<a href="#">88A1</a>	<a href="#">88A0</a>

### Table Mat Kit Includes:

- 1 Table Mat, size as specified
- 1 [3048](#) Wrist Strap Grounding System
- 2 [3034](#) Snap Fasteners (installed)

### Floor Mat Kit Item Numbers

Size	Blue	Gray
4' x 6' (1.2 m x 1.8 m)	<a href="#">8871</a>	<a href="#">8870</a>

### Floor Mat Kit Includes:

- 1 Table Mat, size as specified
- 1 [3040](#) 15' (4.6 m) Ground Cord
- 2 [3034](#) Snap Fasteners (installed)

### Runner Item Numbers

Size	Blue	Gray
2' x 40' (0.6 m x 12.2 m)	<a href="#">8801</a>	<a href="#">8800</a>
2.5' x 40' (0.8 m x 12.2 m)	<a href="#">8821</a>	<a href="#">8820</a>
3' x 40' (0.9 m x 12.2 m)	<a href="#">8851</a>	<a href="#">8850</a>
4' x 40' (1.2 m x 12.2 m)	<a href="#">8891</a>	<a href="#">8890</a>

### Hardware not included with Runners

Made in the United States of America with Globally Sourced Materials.  
Specifications and procedures subject to change without notice.

### Table Roll Item Numbers

Size	Blue	Gray
2' x 24' (0.6 m x 7.3 m)	<a href="#">8841</a>	<a href="#">8840</a>
3' x 24' (0.9 m x 7.3 m)	<a href="#">8861</a>	<a href="#">8860</a>

### Table Roll Includes:

- 1 Table Roll, size as specified
- 2 [3040](#) 15' (4.6 m) Ground Cord
- 5 [3034](#) Snap Fasteners (not installed)

### Floor Runner Item Numbers

Size	Blue	Gray
4' x 24' (1.2 m x 7.3 m)	<a href="#">8881</a>	<a href="#">8880</a>

### Floor Runner Includes:

- 1 Floor Runner, size as specified
- 1 [3040](#) 15' (4.6 m) Ground Cord
- 2 [3034](#) Snap Fasteners

## 8800 SERIES DISSIPATIVE RUBBER MATS AND ROLLS

926 JR Industrial Drive, Sanford, NC 27332  
WEB SITE: [StaticControl.com](http://StaticControl.com)  
PHONE (919) 718-0000

**DRAWING  
NUMBER**  
8800

**DATE**  
August  
2015



## X-ON Electronics

Largest Supplier of Electrical and Electronic Components

*Click to view similar products for [scs manufacturer](#):*

Other Similar products are found below :

[CTC331-WW](#) [7001024](#) [732](#) [8810](#) [963E-X](#) [2220](#) [2383](#) [960](#) [1/6PLDES1200](#) [AMWS61M](#) [2205](#) [4270-9R](#) [AFM2436L1VGR-F](#) [100618](#)  
[230811](#) [8021](#) [SV-CS1](#) [724-PSEU](#) [770760](#) [770758](#) [2384](#) [AFM36720L1VGR](#) [AMWS](#) [CTA101](#) [CGC151M](#) [150812](#) [SAR-L](#)  
[LABELDISPNSR](#) [SV-SH33](#) [81768](#) [770069](#) [770067](#) [770077](#) [CTM082](#) [8203](#) [15058](#) [1PLDES300](#) [2126R](#) [24X125](#) [3033](#) [CTM048-21](#) [8253](#)  
[8204](#) [SAR-S](#) [150Z46](#) [130068](#) [817912](#) [CTA212](#) [81748](#) [CTM051](#) [300630](#)