

# CBA<sup>®</sup>

## RA-4961-DSQ

### Wireless Outdoor PIR Sensor Manual



- For use with RA-4961 series receivers
- Wirelessly monitor driveways, walkways or other areas
- Up to 1,000ft (305m) transmission range\*
- Programmable activation time
- Programmable sensing range up to 40ft (12m)
- Runs on batteries for a convenient, wireless installation
- Adjustable mounting angle

\* Transmission range will vary depending on installation and operating environment.

# CBA Wireless Outdoor PIR Sensor

## Specifications:

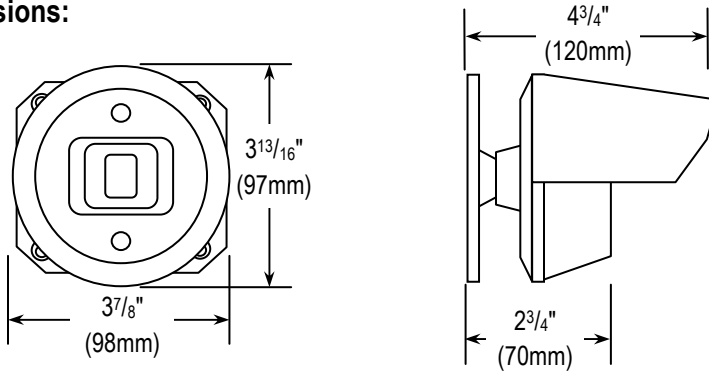
<b>Model number</b>		<b>RA-4961-DSQ</b>
<b>Frequency</b>		914.8MHz
<b>Transmission range*</b>		Up to 1,000ft (305m)
<b>Channels</b>		1
<b>Power supply</b>		4x AA Batteries (Not included)
<b>Current draw</b>	<b>Standby</b>	70µA
	<b>Max</b>	18mA
<b>Estimated battery life</b>		300 days (3 triggers/day)
<b>Low battery indicator</b>		Zone LED on receiver blinks continuously
<b>PIR sensor range</b>		13' (4m) / 23' (7m) / 26' (8m) / 39' (12m)
<b>PIR sensor detection angle</b>		12° (with lens cover) / 15° (without cover)
<b>IP rating</b>		IP45
<b>Operating temperature</b>		-4°~140° F (-20°~60° C)
<b>Dimensions</b>		3 7/8" x 3 13/16" x 4 3/4" (98x97x120 mm)

\*Transmission range will vary depending on installation and operating environment.

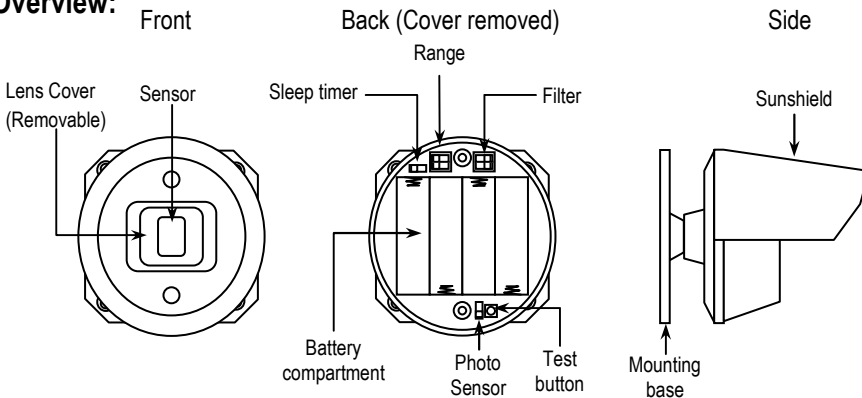
## Parts List:

1x Wireless Outdoor PIR Sensor      4x Screws      4x Screw anchors      1x Manual

## Dimensions:

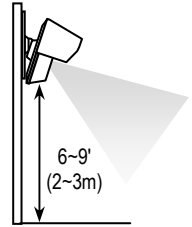


## Overview:



## Installation:

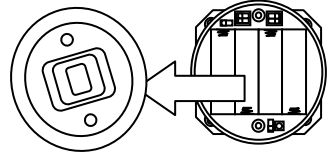
1. Select the location where the sensor will be mounted.
2. The sensor should be mounted 6~9 feet (2~3 meter) above ground, have a clear view of the desired detection area, and be safe from water.
3. Use the four included mounting screws to mount the sensor to the surface.
4. Point the sensor toward the desired detection area (lens cover can be removed to widen the detection angle).



## Programming the Sensor:

### Removing the Cover

1. To access programming functions, the cover of the sensor must be removed.
2. Remove the sunshield from the sensor.
3. Using a screwdriver, remove the screws from the front of the sensor and remove the cover.



### Programming the DIP Switches

1. Use the DIP Switches to program various functions.
2. Refer to the guide below for DIP switch programming.

**a. Sleep Timer** – The sensor will not reactivate for the set amount of time after the sensor is triggered.

7s\*   30s

**b. Range** – The range of the sensor can be set for varying installation environments.

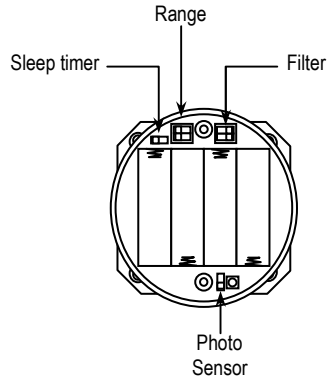
13' (4m)	<input type="checkbox"/> <input type="checkbox"/> <input type="checkbox"/>	23' (7m)	<input type="checkbox"/> <input type="checkbox"/> <input type="checkbox"/>
26' (8m)	<input type="checkbox"/> <input type="checkbox"/> <input type="checkbox"/>	39' (12m)*	<input type="checkbox"/> <input type="checkbox"/> <input type="checkbox"/>

**c. Filter** – The detection speed of the sensor can be set for varying object speeds.

1.5~3<sup>1</sup>/<sub>6</sub>s   3~6<sup>1</sup>/<sub>6</sub>s\*    
 (0.5~1 m/s) (1~2 m/s)

**d. Photo Sensor** – When ON the sensor will be inactive during the day or when near a bright light source.

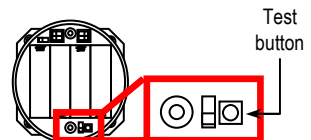
ON\*  OFF



\*Default Setting

## Pairing the Sensor:

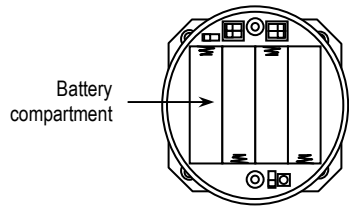
1. Follow the pairing instructions for the RA-4961-K1Q receiver or RA-4961-VPQ wireless receiver to enter pairing mode. (Refer to the RA-4961-K1Q or RA-4961-VPQ manual for detailed pairing instructions).
2. Press the "Test" button. This will activate the sensor for pairing.
3. The receiver will beep once and cycle to the next channel to confirm successful pairing.



# CBA Wireless Outdoor PIR Sensor

## Installing Batteries:

1. Remove the sunshield from the sensor.
2. Using a screwdriver, remove the screws from the front of the sensor and remove the cover.
3. Place 4x AA batteries (not included) in the battery compartment, making sure to observe correct polarity.
4. Replace the cover and screws.
5. Replace the sunshield.



**Note:** Low battery is indicated on the receiver. Refer to the RA-4961-K1Q or RA-4961-VPQ for more information.

## Also Available from SECO-LARM:



## FCC COMPLIANCE STATEMENT:

**FCC ID: YAHDWS-100**

THIS DEVICE COMPLIES WITH PART 15 OF THE FCC RULES. OPERATION IS SUBJECT TO THE FOLLOWING TWO CONDITIONS: (1) THIS DEVICE MAY NOT CAUSE HARMFUL INTERFERENCE AND (2) THIS DEVICE MUST ACCEPT ANY INTERFERENCE RECEIVED, INCLUDING INTERFERENCE THAT MAY CAUSE UNDESIRE OPERATION. Notice: The changes or modifications not expressly approved by the party responsible for compliance could void the user's authority to operate the equipment. IMPORTANT NOTE: To comply with the FCC RF exposure compliance requirements, no change to the antenna or the device is permitted. Any change to the antenna or the device could result in the device exceeding the RF exposure requirements and void user's authority to operate the device.

**LIMITED WARRANTY:** This SECO-LARM product is warranted against defects in material and workmanship while used in normal service for one (1) year from the date of sale to the original customer. SECO-LARM's obligation is limited to the repair or replacement of any defective part if the unit is returned, transportation prepaid, to SECO-LARM. This Warranty is void if damage is caused by or attributed to acts of God, physical or electrical misuse or abuse, neglect, repair or alteration, improper or abnormal usage, or faulty installation, or if for any other reason SECO-LARM determines that such equipment is not operating properly as a result of causes other than defects in material and workmanship. The sole obligation of SECO-LARM and the purchaser's exclusive remedy, shall be limited to the replacement or repair only, at SECO-LARM's option. In no event shall SECO-LARM be liable for any special, collateral, incidental, or consequential personal or property damage of any kind to the purchaser or anyone else.

**NOTICE:** The information and specifications printed in this manual are current at the time of publication. However, the SECO-LARM policy is one of continual development and improvement. For this reason, SECO-LARM reserves the right to change specifications without notice. SECO-LARM is also not responsible for misprints or typographical errors. Trademarks are the property of SECO-LARM USA Inc. or their respective owners.

Copyright © 2015 SECO-LARM U.S.A., Inc. All rights reserved. This material may not be reproduced or copied, in whole or in part, without the written permission of SECO-LARM.

## SECO-LARM® U.S.A., Inc.

16842 Millikan Avenue, Irvine, CA 92606  
Phone: (949) 261-2999 | (800) 662-0800

Website: [www.seco-larm.com](http://www.seco-larm.com)  
Email: [sales@seco-larm.com](mailto:sales@seco-larm.com)



MiRA-4961-DSQ\_150916.doc

## **X-ON Electronics**

Largest Supplier of Electrical and Electronic Components

*Click to view similar products for [SECO-LARM](#) manufacturer:*

Other Similar products are found below :

[CA151T](#) [ST-2406-5A](#) [SL-1301-BAQ/C](#) [SD-7202GC-PT](#) [SL-1301-BAQ/B](#) [E-936-S45RRGQ](#) [SA-027WQ](#) [82-12781](#) [E-941SA-1200](#) [SD-7201GCPE1Q](#) [SK-990AQ](#) [SM-200Q/BR](#) [SS-090-2H0](#) [SM-226R-3Q](#) [SM-4103-TQ/W](#) [E-941SA-300RQ](#) [SL-126Q/C](#) [SS-090-2H1](#) [SK-91ERSD](#) [SR-1212-C2ALQ](#) [SM-4201-LQ](#) [CA-1615-06LQ](#) [SD-7202GC-PEQ](#) [SS-074Q/BG](#) [CA-1515Q](#) [NE-SE01-020Q](#) [SM-216Q/GY](#) [SL-126Q/R](#) [SK-1011-SDQ](#) [SM-205Q/BR](#) [SM-226RQ](#) [SM-4601-LQ](#) [SL-126Q/A](#) [SL-126Q/B](#) [SS-073Q](#) [NJ-P101M-PQ](#) [SL-1312-SA/R](#) [SS-040Q](#) [WHITE](#) [SM-4102-TQ/W](#) [CA-1610-3FLQ](#) [SM-4601-L3Q](#) [SM-4303-TQ/W](#) [SM-226L-3Q](#) [SM-204Q/W](#) [CA-1616Q](#) [SM-4301-TQW](#) [SM-4105-LQ/W](#) [SL-1301-BAQ/R](#) [SM-300Q/W](#) [SM-226LQ](#)