



Kittenbot Meowbit Card-sized Retro Game Computer

SKU 102991182

Meowbit is a card-sized graphical retro game computer with allows you coding with Makecode arcade and Python. In other words, it can use combines game programming with hardware devices.

Meowbit is a card-sized graphical programming video game console designed for teenagers. It contains 1.8' full-color screen, 6 x programmable buttons ,1 x buzzer, built-in light sensor, temperature sensor, SD card slot (For external storage), multiplayer connector and edge connector. Especially the edge connector could access most micro:bit expansion boards. We recommend using Robot:bit for Mewobit, it can help you create a robot quickly.

Features

- 160 x 128 full-color TFT LCD provides a more vivid interactive interface
- Easy to use graphical programming, learning while playing experience through game programming
- Cross-cutting functions including hardware and software
- Abundant hardware resources made infinite possibility possible
- Support multi-platform including Makecode arcade, Kittenblock, scratch3.0, MicroPython; support multi-language
- Support diagraming, showing the data changing of the sensors more intuitive



160x128 Full-color LCD



Graphical Game Programming



Cross-cutting Functions



Abundant Hardware Resources



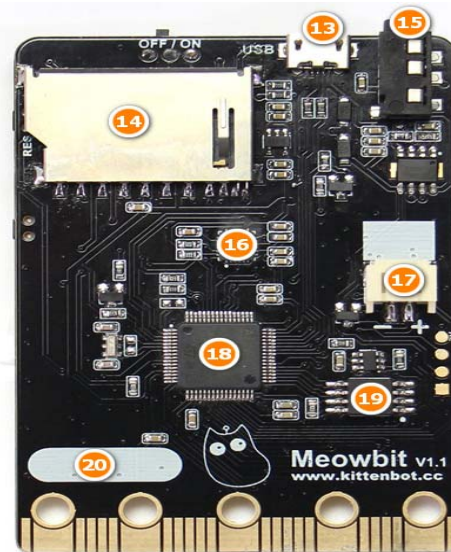
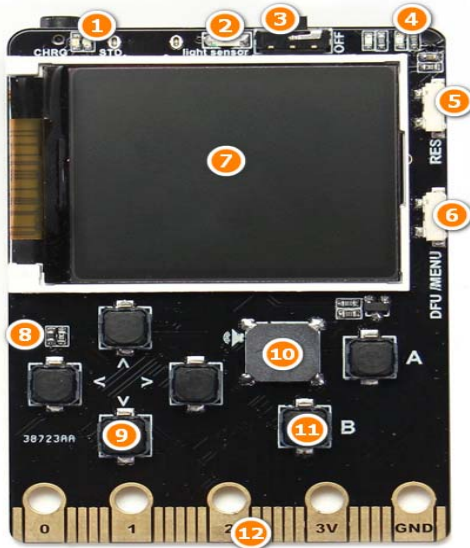
Support Multi-Language



Support Diagramming

Hardwares

- | | |
|--|--|
| <ol style="list-style-type: none"> 1. Charging/work indicator 2. Light sensor 3. Power switch 4. Programmable led x 2 5. Reset 6. DFU mode button 7. 160 x 128 TFT color screen 8. Temperature sensor 9. Direction button x 4 10. Buzzer | <ol style="list-style-type: none"> 11. Button A/B 12. Compatible with micro:bit's 40 PINs Goldfinger 13. USB program download port / charging port 14. SD card slot (Use for store programs or extend wireless modules) 15. Multiplayer Connector 16. mp6050 gyroscope 17. 3.7V lithium battery package interface 18. MCU 19. 2MByte SPI-flash (default download Unicode character table) 20. Signature area |
|--|--|

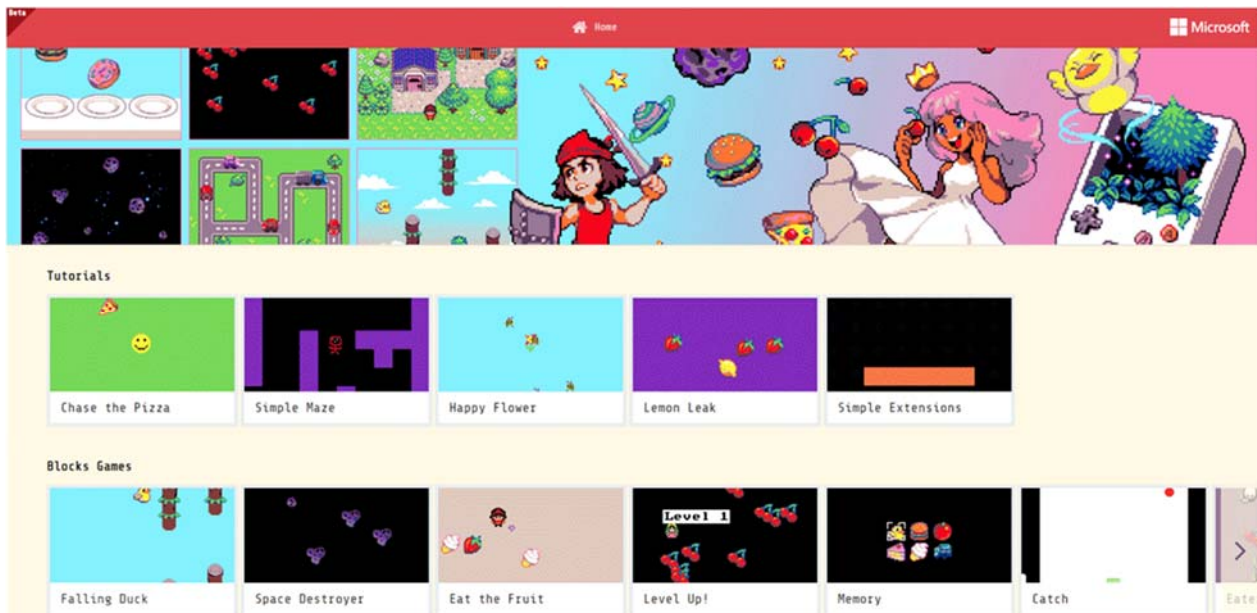


Parameters

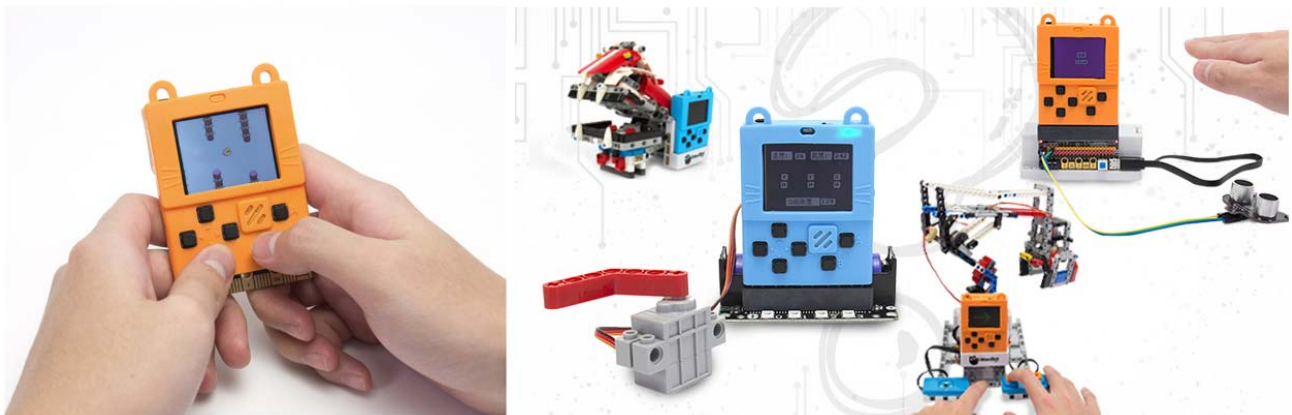
- MCU : STM32F401RET6, 32-bit ARM Cortex M4 core
- Operating voltage: 3.3V
- Supply voltage : USB(5V), Lithium battery pack(3.7~4.2V)
- Output current: 500mA(max)
- Dimensions: 52x76x12(mm)
- MacOS, Windows7 and above

Programming mode

- Makecode Arcade graphical programming mode
- MicroPython programming mode



Scenarios



Part List

- Meowbit x 1
- Silicone Sleeve for Meowbit x 1
- **Not included:** 6x40x20mm 3.7V 450mAh Lithium Ion Battery with JST 2.0mm PH, 2-Pin connectorx1



ECCN/HTS

ECCN	3A991.a
HSCODE	8543709990
USHSCODE	85177000



X-ON Electronics

Largest Supplier of Electrical and Electronic Components

Click to view similar products for [Single Board Computers](#) category:

Click to view products by [Seeed Studio](#) manufacturer:

Other Similar products are found below :

[MANO882VPGGA-H81](#) [SSD3200W-S-SLC-INN](#) [AmITX-SL-G-Q170](#) [IB100](#) [CM3-BT4-E3845](#) [MVME61006E-2173R](#) [20-101-0738](#) [PCE-4128G2-00A1E](#) [RSB-4220CS-MCA1E](#) [SHB230DGGA-RC](#) [IB909AF-5650](#) [CM2-BT2-E3825-ETT](#) [AmITX-BT-I-E3815](#) [PICO841VGA-E3827](#) [IMB210VGGA](#) [MI981AF](#) [RSB-4221CS-MCA1E](#) [PCE-9228G2I-00A1E](#) [PCE-5029VG-00A1E](#) [AIMB-275G2-00A1E](#) [IB915F-3955](#) [IB909F-5010](#) [MI958F-16C](#) [Nitrogen7](#) [UPS-P-8G-64GB-PACK](#) [S2600WFT](#) [IB915AF-6300](#) [S2600STB](#) [BBS2600BPS](#) [IB915F-6100](#) [Nit6QP_MAX](#) [MI990VF-X28-E](#) [MI990VF-6820](#) [MI991AF-C236](#) [94AC6636](#) [BANANA PI BPI-M4](#) [BLKNUC7I3DNHNC1978015](#) [BLKNUC7I5DNK1E 960791](#) [IOT-LS1012A-OXALIS](#) [NITX-300-ET-DVI](#) [94AC6633](#) [CS-OMEGA-08](#) [MICROSOM I2 + WIFI/BT](#) [HUMMINGBOARD-I1 PRO + WIFI/BT](#) [HUMMINGBOARD-I2EX BASE + WIFI/BT](#) [HUMMINGBOARD-I2 PRO](#) [HUMMINGBOARD-I2 PRO + WIFI/BT](#) [HUMMINGBOARD-I4 PRO + WIFI/BT](#) [RT5350F-OLINUXINO-EVB](#) [VT60800013001-T](#)