

# GrovePi+ SKU 103010002

GrovePi+ are compatible with Pi 2, please check the details from Dexter's [blog](#).

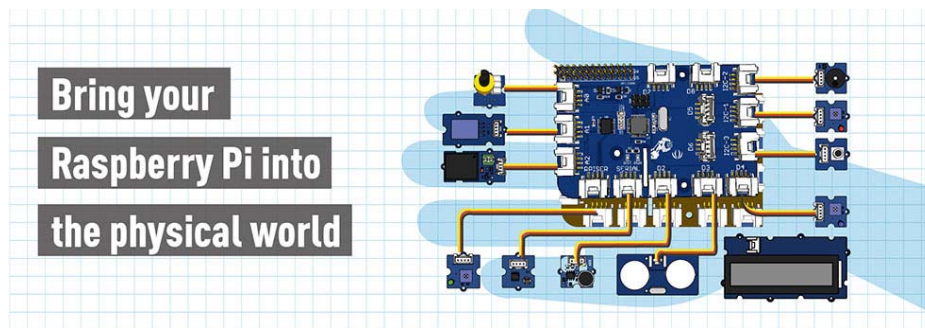
**GrovePi+**

**GrovePi+**  
The bridge  
Between  
Raspberry Pi &  
Grove family

Web enables your world!

Humidity, Relay, Temperature, Ultrasonic, LED, Light Sensor, Rotary Angle

The graphic features a blue background with a grid pattern. On the left, the text "GrovePi+ The bridge Between Raspberry Pi & Grove family" is displayed in a bold, sans-serif font. Below this, a dark grey box contains the slogan "Web enables your world!". To the right, a 3D rendering of the GrovePi+ board is shown. Surrounding the board are several circular icons connected by white lines, representing various sensors and components: Humidity (globe with leaf), Relay (battery with lightning bolt), Temperature (thermometer), Ultrasonic (sound waves), LED (light bulb), Light Sensor (sun), and Rotary Angle (circular arrow).



## What is GrovePi+

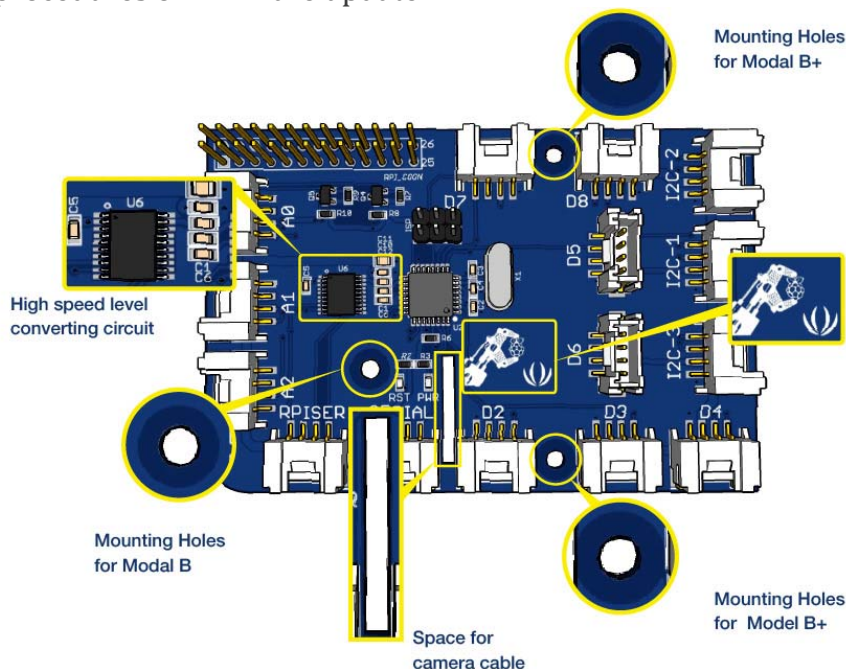
GrovePi+ is add-on board with 15 Grove 4-pin interfaces that brings Grove sensors to the Raspberry Pi. It is the newest version compatible with Raspberry Pi model B/B+/A+/2/3 perfectly.

GrovePi+ is an easy-to-use and modular system for hardware hacking with the Raspberry Pi, no need for soldering or breadboards: plug in your Grove sensors and start programming directly. Grove is an easy to use collection of more than 100 inexpensive plug-and-play modules that sense and control the physical world. By connecting Grove Sensors to Raspberry Pi, it empowers your Pi in the physical world. With hundreds of sensors to choose from Grove families, the possibilities for interaction are endless.

**NOTE: The Raspberry Pi board is not included.**

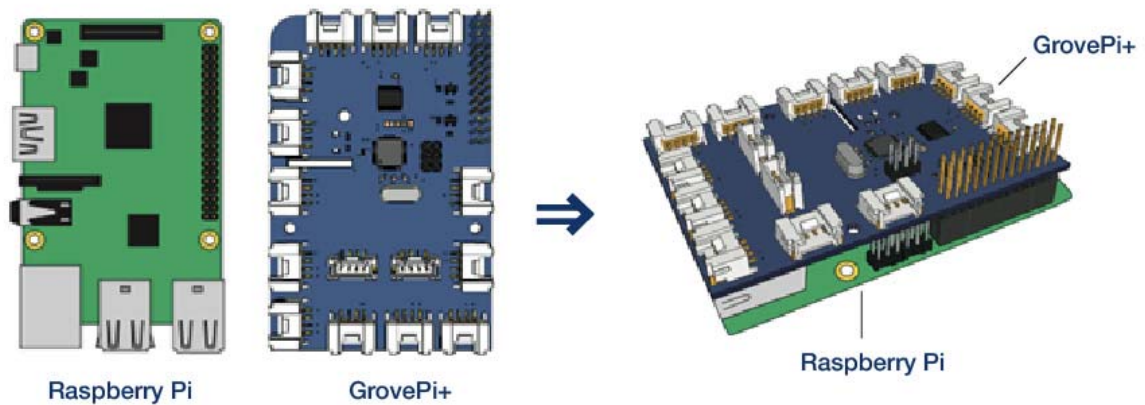
## What is New

- Compatible with Raspberry Pi model B/B+/A+/2/3 perfectly
- Faster SPI and higher reliability UART connections
- Easier to assemble camera cables and LCD cables
- Simplified procedures of firmware update



## How to use

- Step 1 - Slip the GrovePi+ board over your Raspberry Pi
- Step 2 - Connect the Grove modules to the GrovePi+ board
- Step 3 - Upload your program to Raspberry Pi
- Step 4 - Begin taking in the world data



## Technical Details

Dimensions	88mm x 58mm x 23mm
Weight	G.W 51g
Battery	Exclude
<b>7 digital Ports</b>	
<b>3 analog Ports</b>	
<b>3 I2C ports</b>	
<b>1 Serial port connect to GrovePi</b>	

## 1 Serial port connect to Raspberry Pi

Grove header Vcc output Voltage	5Vdc
---------------------------------	------

### Part List

Grove Pi+	1
-----------	---

### ECCN/HTS

ECCN	Not Available
------	---------------

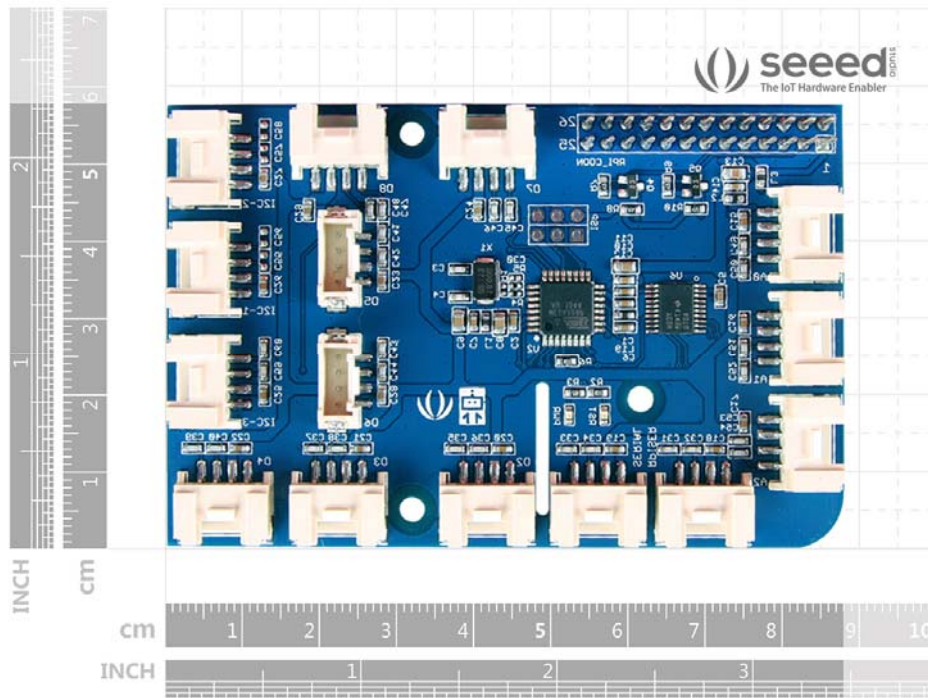
HSCODE	8517709000
--------	------------

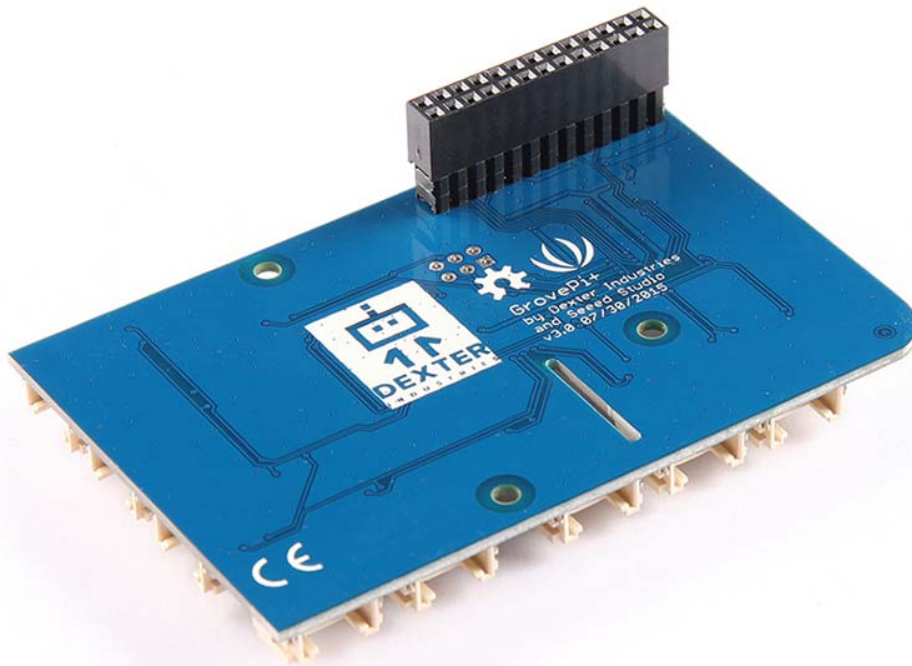
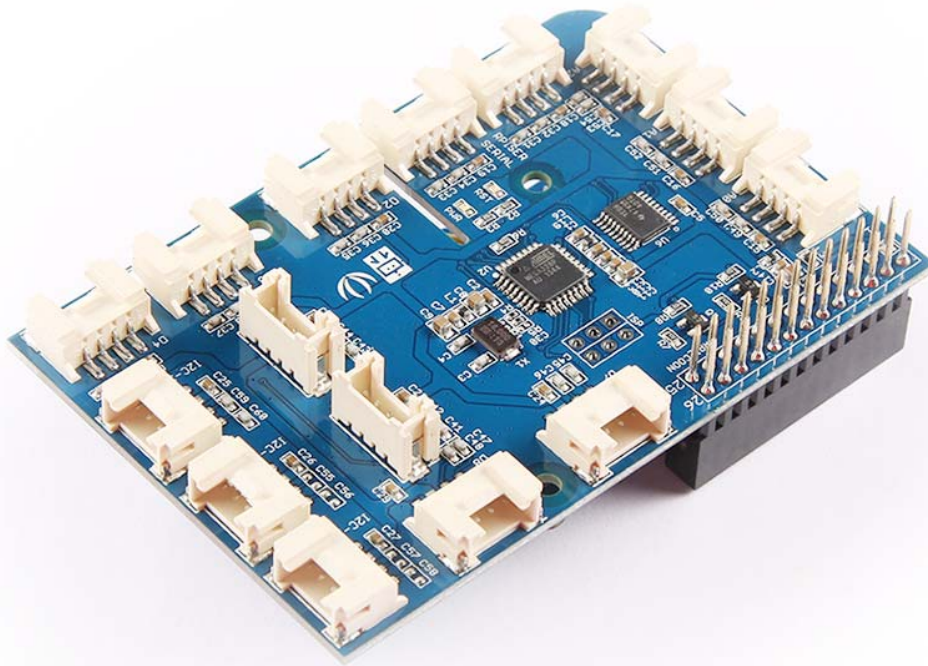
### Certification

RoHS	Compliant
------	-----------

## Documents

- Programming the GrovePi+
- More Grove Sensors Compatible with Raspberry Pi





## **X-ON Electronics**

Largest Supplier of Electrical and Electronic Components

*Click to view similar products for [Seeed Studio Accessories](#) category:*

*Click to view products by [Seeed Studio](#) manufacturer:*

Other Similar products are found below :

[101990565](#) [114992282](#) [114992268](#) [101990647](#) [103060000](#) [101020004](#) [101020006](#)

[101020012](#) [101020018](#) [101020028](#) [101020038](#) [101020045](#) [101020049](#) [101020052](#)

[101020055](#) [101020056](#) [101020058](#) [101020472](#) [101020580](#) [101020603](#) [101990007](#)

[101990028](#) [101990053](#) [101990058](#) [101990059](#)