



Grove - RJ45 Adapter User Manual

Release date: 2015/9/22

Version: 1.0

Wiki: [http://seedstudio.com/wiki/Grove - RJ45 Adapter](http://seedstudio.com/wiki/Grove_-_RJ45_Adapter)

Bazaar: <http://www.seedstudio.com/depot/Grove-RJ45-Adapter-p-1426.html>

Document Revision History

Revision	Date	Author	Description
1.0	Sep 22, 2015	Jiankai.li	Create file

Contents

Document Revision History	2
1. Introduction	2
2. Feature	3
3. Interface Function	4
4. Usage	5
5. Resource	6

Disclaimer

For physical injuries and possessions loss caused by those reasons which are not related to product quality, such as operating without following manual guide, natural disasters or force majeure, we take no responsibility for that.

Under the supervision of Seeed Technology Inc., this manual has been compiled and published which covered the latest product description and specification. The content of this manual is subject to change without notice.

Copyright

The design of this product (including software) and its accessories is under tutelage of laws. Any action to violate relevant right of our product will be penalized through law. Please consciously observe relevant local laws in the use of this product.

1. Introduction

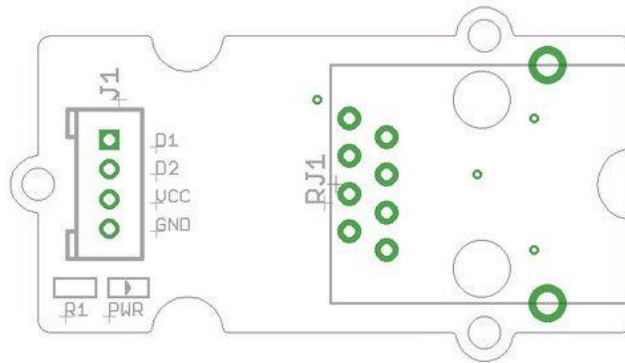
The Grove-RJ45 Adapter is a module which can convert a standard Grove connector to a RJ45 connector. Universal 4-Pin Grove cables can not meet the requirements when Arduino remote connect and control Grove module. Through two RJ45 adapter and a cable, It is able to achieve communication between Arduino and Grove module. This help solve the problem that Arduino and Grove are not convenient to connect because of the distance issue.



2. Feature

- Standard Grove Connector and RJ45 Connector
- Applications Widely
- Easy to use

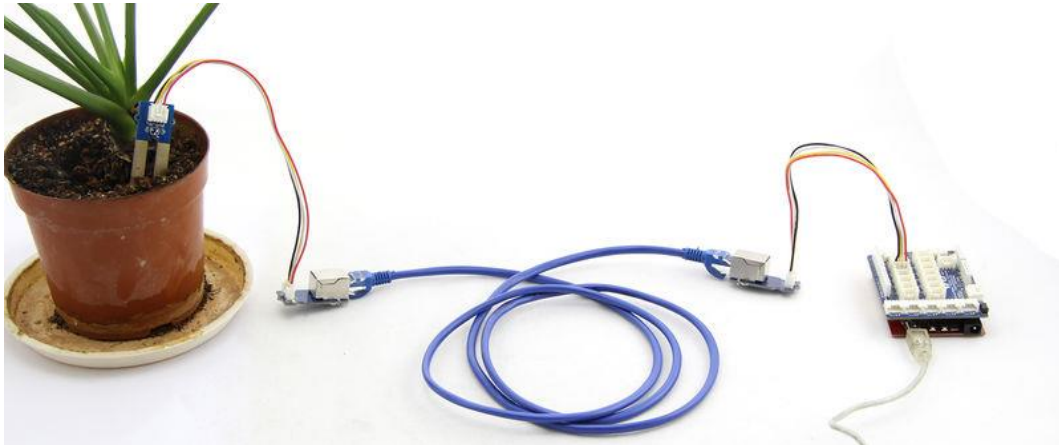
3. Interface Function



Grove Connector	R45 Connector
VCC	A7
GND	A8
D1	A5
D2	A4

4. Usage

If you want to use the Moisture Sensor to real-time detect the moisture of soil in your garden, but you do not want to go to the garden personally. How to do it? Using two RJ45 adapter and a long network cable, you can solve this problem. The Hardware Installation should be:



You may need to write the code by yourself for the special applications. But we can guarantee that you can always know the soil moisture of plants by observing the output data of the moisture sensor.

You may want to ask why not use a long Grove cable instead of two Grove - RJ45 and a network cable, the reason is the network cable has a weak attenuation.

5. Resource

- [Grove - RJ45 Adapter Eagle File](#)

X-ON Electronics

Largest Supplier of Electrical and Electronic Components

Click to view similar products for [Ethernet Development Tools](#) category:

Click to view products by [Seeed Studio](#) manufacturer:

Other Similar products are found below :

[XAUI-RISER-B](#) [KSZ8081RNB-EVAL](#) [KSZ8863FLL-EVAL](#) [KSZ8873MLL-EVAL](#) [PD-IM-7648M](#) [PD-IM-7648T4](#) [PD70101EVB15F-12](#)
[PD70101EVB6F](#) [PD70211EVB50FW-5](#) [PD70211EVB72FW-12](#) [EV09H26A](#) [EV44F42A](#) [DP83620-EVK/NOPB](#) [WIZ550S2E-232-EVB](#)
[DFR0272](#) [A000024](#) [DFR0125](#) [UKIT-006GP](#) [UKIT-003FE](#) [UKIT-002GB](#) [UKIT-001FE](#) [EVB-KSZ9477](#) [OM-E-ETH](#) [UP-POE-A20-0001](#)
[2971](#) [3785](#) [ASX00006](#) [ASX00021](#) [ASX00026](#) [XTIB-E](#) [ESP32-ETHERNET-KIT-VE](#) [EVB-KSZ9897-1](#) [KSZ9031MNX-EVAL](#) [AC164121](#)
[AC164132](#) [AC320004-5](#) [AC320004-6](#) [AC320004-7](#) [DM320114](#) [DM990004](#) [EV02N47A](#) [EV44C93A](#) [EVB-KSZ8563](#) [EVB-KSZ9477-1](#)
[EVB-KSZ9893](#) [EVB-LAN7430](#) [EVB-LAN7431-EDS](#) [EVB-LAN7800LC-1](#) [EVB-LAN7850](#) [EVB-LAN9252-3PORT](#)