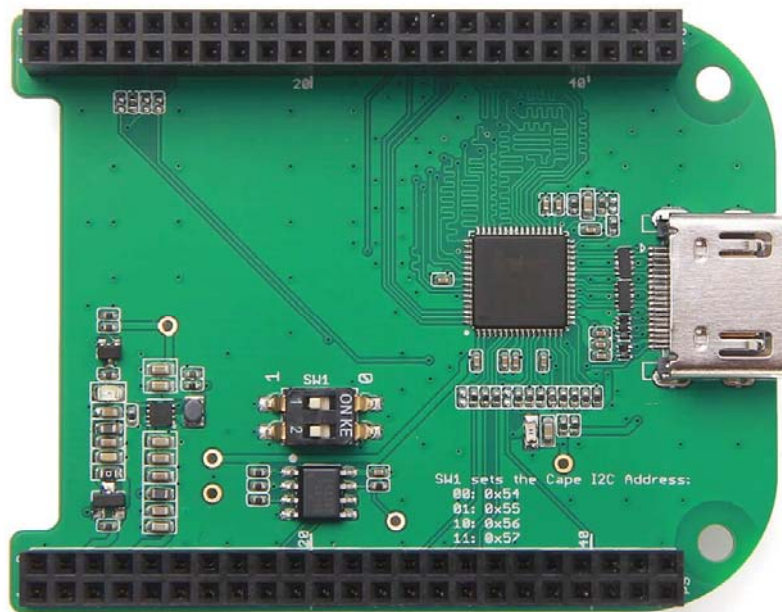


BeagleBone Green HDMI Cape



BeagleBone Green HDMI Cape is a general integrated HDMI connector for expanding your BeagleBone to a rich variety of peripherals such as computer monitor, video projector, digital television, or digital audio device. This board features a standard HDMI receptacle that can be connected to a monitor with a standard HDMI-to-HDMI cable. All HD signals are supported, and the output resolution is 1280x720. It also can be used to transmit audio information. This product will make your applications based on BeagleBone board more versatile for different circumstances.

Features

- Plug and play.
- Adapter to different input signal.
- 720P(1280x720) output resolution.

Specifications

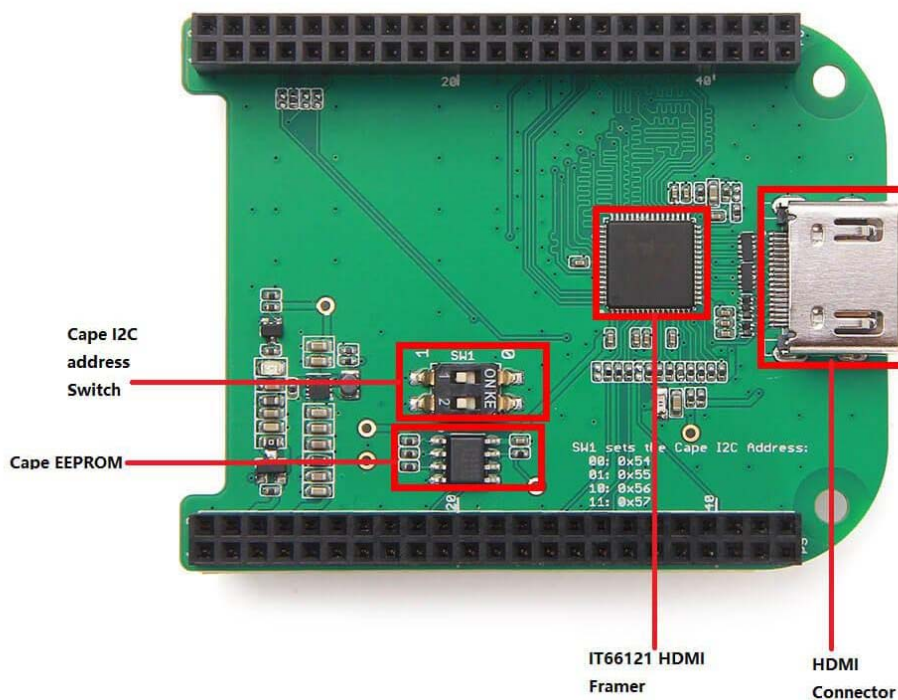
Parameter	Value
Input voltage	5V/3.3V
Maximum operating current	80 mA
HDMI version	Version 1.2
Maximum Output resolution	1280x720 @60Hz
Audio transmission	Available
Chip	IT66121 HDMI Framer(Datasheet)

Platforms Supported

Application ideas

You can expand your BeagleBone to more multimedia peripherals such computer monitor, video projector, digital television, or digital audio device.

Hardware Overview



IT66121 HDMI Framer

- HDMI Transmitter

Cape I2C address Switch

- To switch between different cape address identifier.

Cape EEPROM

- EEPROM memory for this cape.

HDMI Connector

Parts list

Parts name	Quantity
BeagleBone Green HDMI Cape	1

Getting Started

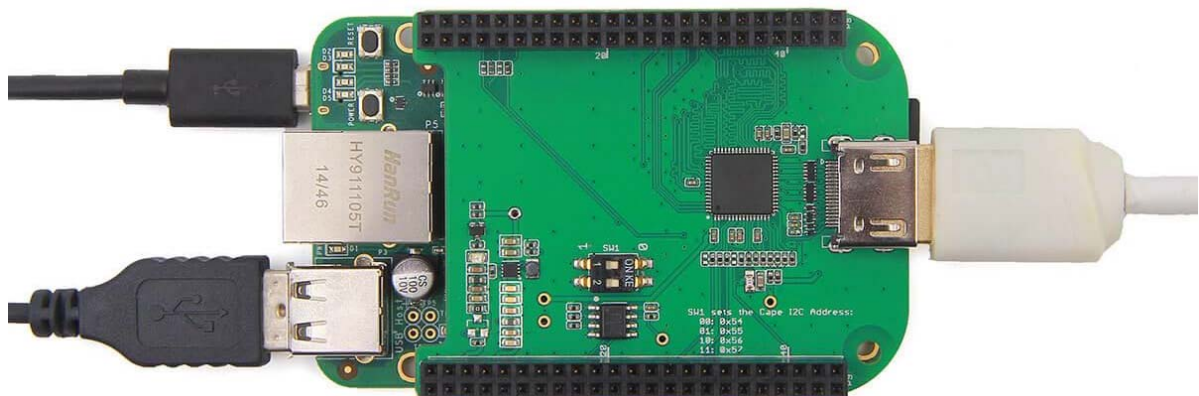
This part will show you how to start with this product in a few steps.

Preparations

- BeagleBone Green board x 1.
- USB cable (type A to micro type B) x 1.
- Standard HDMI cable(type A to type A) x 1.

Hardware Connection

- Step 1. Please follow below picture to connect the hardware.



- Step 2. Plug USB cable(type C end) to your PC.

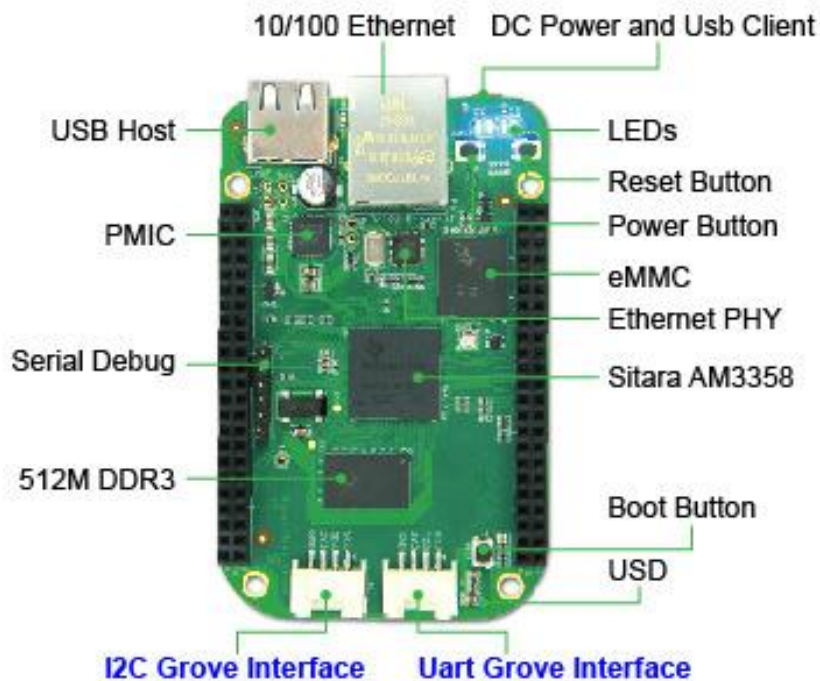
Software

- Step 1. Please download [Debian 8.10 2018-02-01 4GB SD SeeedStudio IoT](#) image from [beaglebone.org](#).
- Step 2. Please use the [Etcher](#) to burn images to SD cards.
- Step 3. We can see the linux command line on the screen.
- Step 4. If we want to use the graphic UI. Please follow below instructions to install lxde.

```
1sudo apt-get update
2sudo apt-get install lxde lxde-core lxde-icon-theme
```

Trouble shooting

1. No BeagleBone desktop operation system is shown on the computer monitor? Try one of following steps.
 - Power down the monitor and restart it.
 - Press RESET button on BeagleBone Green board.
 - Press POWER button on BeagleBone Green board and then press it again.



2. The computer mouse does not work(not powered)?
 - Press RESET button on BeagleBone Green board and wait it to launch.
3. How disassemble BeagleBone Green HDMI Cape quickly?

- Pull(with your hand) the end with HDMI receptacle out first, then pull the other end out. Repeat previous two steps again if it is necessary.
4. If the Ixde Graphic keeps asking the wicd password, please follow below instructions.
- Step 1. Please ignore it.
 - Step 2. Open the terminal, run below commands.

```
1rm /etc/resolv.conf
2ln -s /run/resolvconf/resolv.conf
3rm /var/lib/wicd/resolv.conf.orig
4ln -s /run/resolvconf/resolv.conf /var/lib/wicd/resolv.conf.orig
5sudo service wicd start
6sudo reboot
```
 - Step 3. Please use the wicd graphic tool to connect to wifi.
 - Step 4. We can use wifi, SSH tools.

Demo

This [video](#) shows how to use BeagleBone Green HDMI Cape to surfing Internet and play audio.

Resources

- [Schematic files](#)
https://raw.githubusercontent.com/SeeedDocument/BeagleBone_Green_HDMI_Cape/master/res/Schematic_Files.zip

Tech Support

Please submit any technical issue into our [forum](#) or drop mail to techsupport@seeed.cc.

X-ON Electronics

Largest Supplier of Electrical and Electronic Components

Click to view similar products for [Seeed Studio](#) manufacturer:

Other Similar products are found below :

[102990004](#) [114991125](#) [110990440](#) [308010014](#) [114990196](#) [AIR QUALITY SENSOR V1.3](#)

[GROVE-HEELIGHT SENSOR](#) [GROVE LED BAR V2.0](#) [GREEN LED BLE](#) [113990194](#)

[101020193](#) [103020137](#) [104990382](#) [103990021](#) [110060702](#) [316040004](#) [114991375](#)

[110991029](#) [110990049](#) [110060862](#) [102990383](#) [103990283](#) [317990279](#) [109990366](#)