

Grove - LED Matrix Driver (HT16K33)

SKU 105020074

LED Matrix is low cost and usually used to display simple numbers and images. The Grove - LED Matrix Driver is the I2C based product which allows you to control the LED matrix with our prepared and easy-to-use libraries, or you can create your own library to control it to satisfy your need. The 8*8 LED Matrix can be assembled and unassembled from the driver board easily, so it is convenient to change different color LED matrix display based on your need.

Attention

This module do not contain a the RED LED Matrix, it's only a drive board.

Note

We've Released the [Grove Selection Guide](#) and hope to help you find the Grove suit you best.

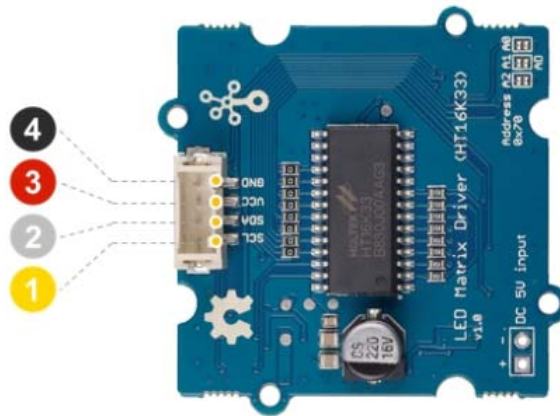
Feature

- Integrated RC oscillator
- R/W address auto increment
- Max. 8 x 8 patterns
- I2C-bus interface

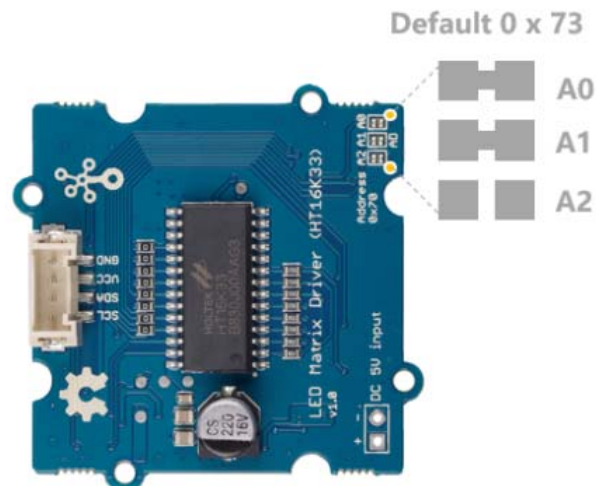
Typical Application

- Industrial control indicators
- Digital clocks, thermometers, counters, multimeters
- Combo sets
- VCR sets
- Instrumentation readouts
- Other consumer applications
- LED Displays

Pin Out

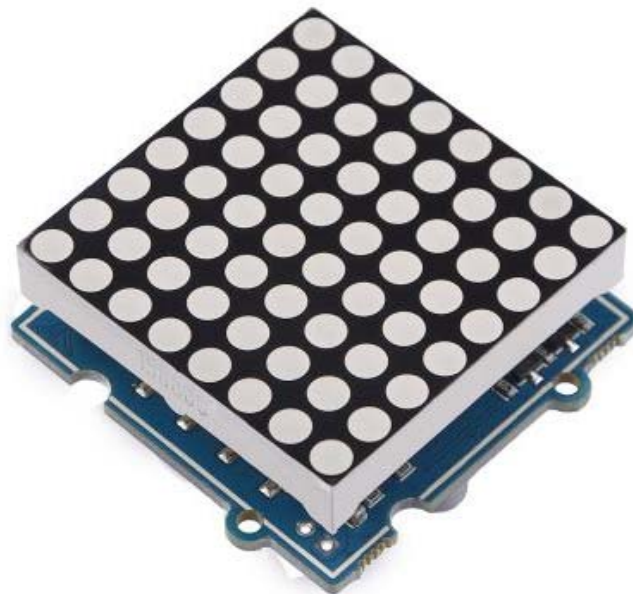
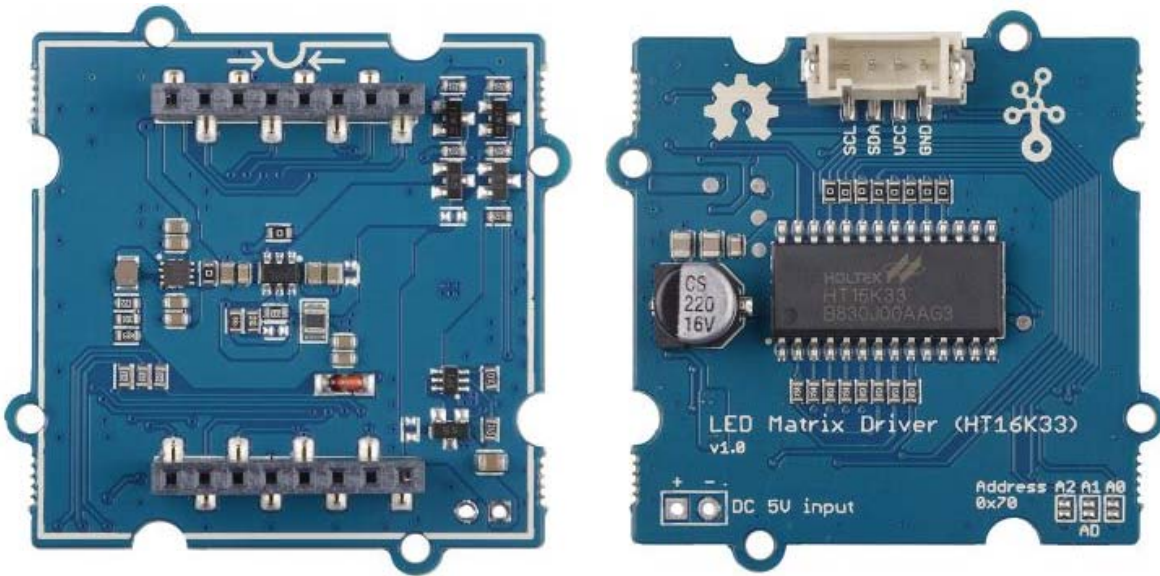


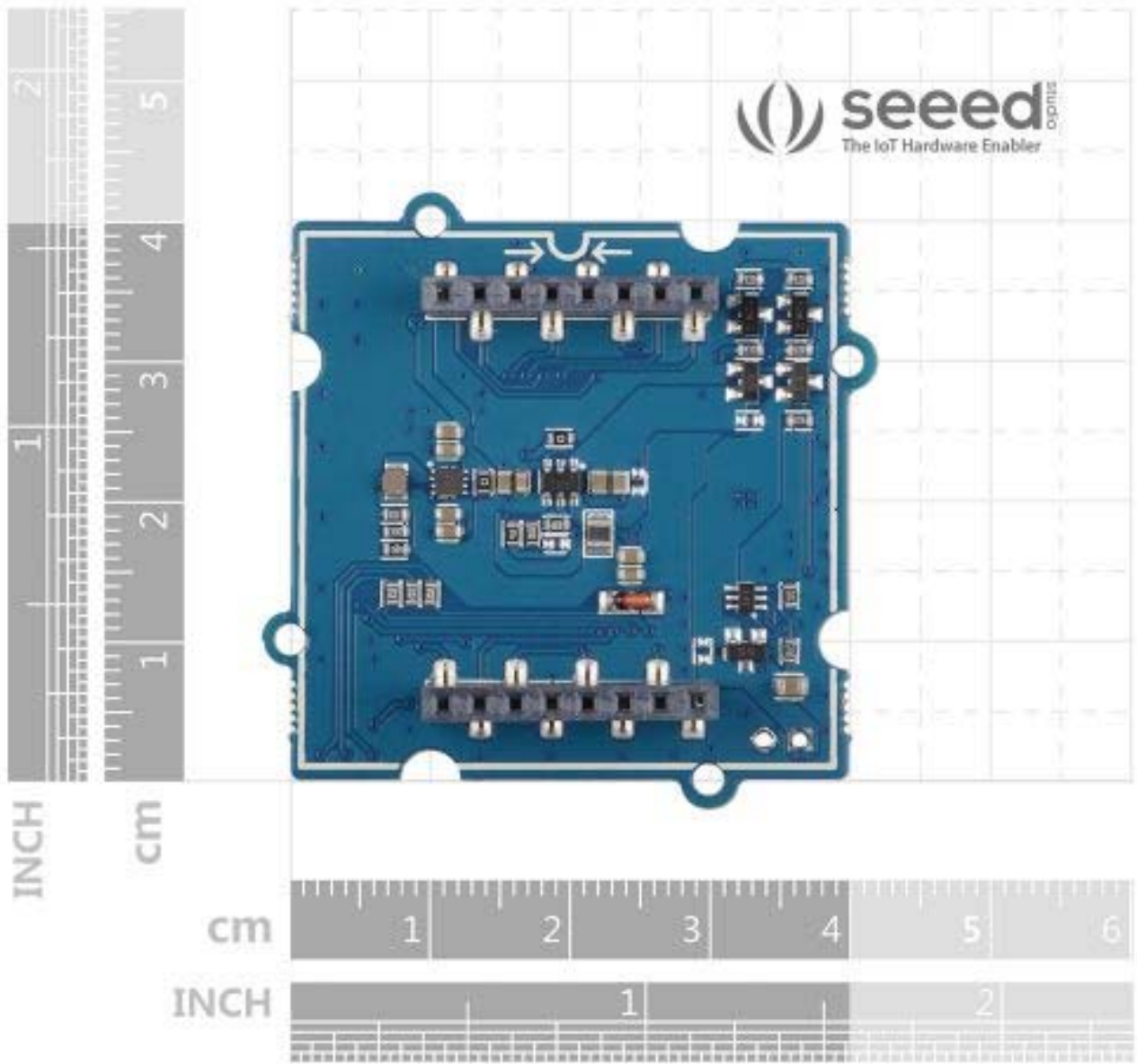
- ④ GND: connect this module to the system GND
- ③ VCC: you can use 5V or 3.3V for this module
- ② SDA: I²C serial data
- ① SCL: I²C serial clock



ECCN/HTS

ECCN	EAR99
HSCODE	9405990000
UPC	





X-ON Electronics

Largest Supplier of Electrical and Electronic Components

Click to view similar products for [LED Lighting Development Tools](#) category:

Click to view products by [Seeed Studio](#) manufacturer:

Other Similar products are found below :

[MIC2870YFT EV 1278.1010](#) [ADP1660CB-EVALZ](#) [ADP8860DBCP-EVALZ](#) [AS1119-DB](#) [HV9919BDB1](#) [LM2796TLEV](#)
[LM3404MREVAL](#) [LP55231SQEVM](#) [ADM8843EB-EVALZ](#) [ADM8845EB-EVALZ](#) [ADP8861DBCB-EVALZ](#) [TDGL014](#) [MIC2873YCS-EV](#)
[TPS92010EVM-631](#) [ISL97682IRTZEVALZ](#) [UCC25710EVM-654](#) [LM3508TLEV](#) [LM3549SQEV/NOPB](#) [LM3552SDEV](#) [LP3943ISQEV](#)
[EA6358NH](#) [TPS61158EVM-565](#) [TPS61187EVM-528](#) [TLC5929EVM-118](#) [ZLED7020Kit-D1 V2.0](#) [XRP7613EVB](#) [MAX16836EVKIT](#)
[MAX16834EVKIT+](#) [MAX16826EVKIT](#) [MAX16824EVKIT+](#) [MAX16823EVKIT+](#) [MAX16822BEVKIT+](#) [MAX16821BEVKIT+](#)
[MAX16820EVKIT+](#) [MAX16803EVKIT+](#) [NCL30081LEDGEVB](#) [STEVAL-ILL002V4](#) [MAX16833EVKIT+](#) [MAX16839EVKIT+](#)
[TPS92315EVM-516](#) [KIT12XS6EVM](#) [DC994A](#) [ISL78171EVAL1Z](#) [TLC59282EVM-118](#) [MAX6956EVKIT+](#) [TWR-MC36XSDEVB](#)
[OM13321,598](#) [DC805A](#) [DC381A](#)