

Adjustable DC&DC Power Converter (1V - 12V&1.5A)

SKU 105030005

Description



According to the United State Government Statement released on June 15, 2018, an additional tariff will be charged for this product shipped to the USA starting July 6th, 2018.

This is a DC/DC step-down voltage regulator that converts input voltage between 4.5V and 16V into a smaller voltage between 1V and 12V, capable of driving a 1.5A load with excellent line and load regulation.

In some projects, you might need different voltages (1-12V) for your devices. Without this kind of DC power source, you'll find it time-consuming to buy a new one. The delay of project is so annoying. No worries! This module can accelerate prototyping, because you can get the voltage you need (such as 1.2V, 1.8V, 3.3V, 5V and 9V) as easy as blinking eyes.

Features

Wide Output Voltage Range

Ensured 1.5A Output Load Current

Input Voltage Range Up to 16V

Excellent Line and Load Regulation

Low Power Standby Mode

Precise potentiometer for voltage adjustment

Thermal Shutdown and over-current protection

Specification

Input Voltage: 4.5-16V

Output Voltage: 1V - 12VDC

Heating consumption: 0.5-1200mW

Load resistance: can adjust

Max. Output Current: 1.5A

Output Ripple: $\leq 100\text{mV}$

Switching Frequency: 500KHz

Operating Temperature: -40°C to $+125^{\circ}\text{C}$

Dimensions: 36mm*30mm*10mm(l*w*h)

Technical Details

Dimensions	145mm x 85mm x 10mm
Weight	G.W 10g
Battery	Exclude

Part List

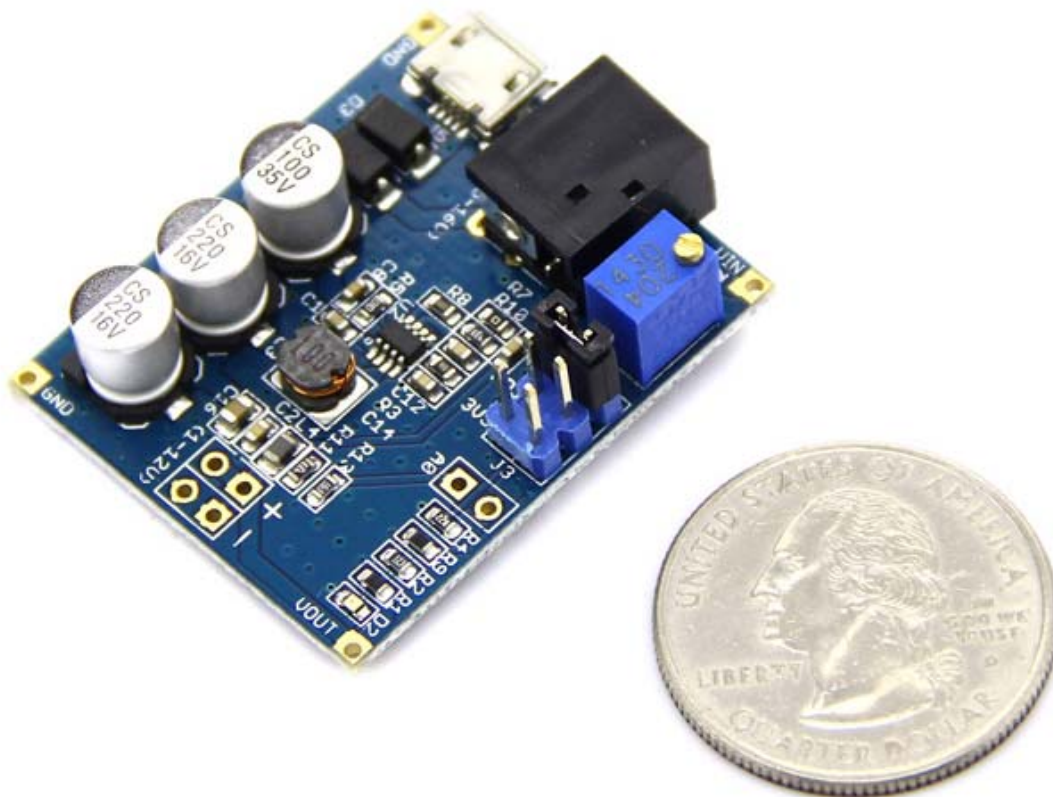
Adjustable DC&DC Power Converter (1V - 12V&1.5A)	1
---	---

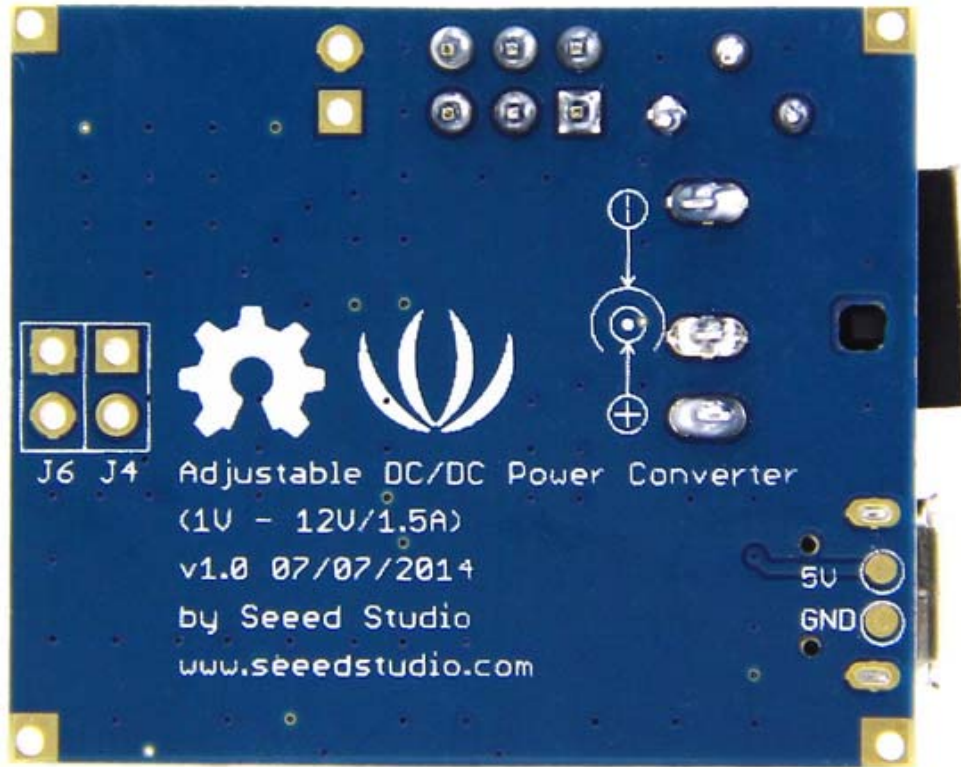
ECCN/HTS

ECCN	EAR99
HSCODE	8504909090

Certification

RoHS	Compliant
------	-----------





X-ON Electronics

Largest Supplier of Electrical and Electronic Components

Click to view similar products for [Power Management IC Development Tools](#) category:

Click to view products by [Seeed Studio](#) manufacturer:

Other Similar products are found below :

[EVAL6482H-DISC](#) [EVAL-ADM1060EBZ](#) [EVAL-ADM1073MEBZ](#) [EVAL-ADM1166TQEBZ](#) [EVAL-ADM1168LQEBZ](#) [EVAL-ADM1171EBZ](#) [EVAL-ADM1276EBZ](#) [EVB-EN5319QI](#) [EVB-EN5365QI](#) [EVB-EN6347QI](#) [EVB-EP5348UI](#) [MIC23158YML](#) [EV MIC23451-AAAYFL](#) [EV MIC5281YMME](#) [EV ADM00513](#) [ADM8611-EVALZ](#) [ADM8612-EVALZ](#) [ADM8613-EVALZ](#) [ADM8615-EVALZ](#) [ADP1046ADC1-EVALZ](#) [ADP1055-EVALZ](#) [ADP122-3.3-EVALZ](#) [ADP130-0.8-EVALZ](#) [ADP130-1.2-EVALZ](#) [ADP130-1.5-EVALZ](#)