

Brushless Motor Shield (TB6605FTG)

SKU 105030027

The Brushless Motor Shield (TB6605FTG) is a brushless motor driver for Arduino compatible system. It supports 9V ~ 24V DC input and can continuously and continuously output large current to drive the brushless motor. With the onboard potentiometer, you can adjust the motor speed easily. This shield offers a variety of modes to choose from, you can use the four onboard switches to switch functions.

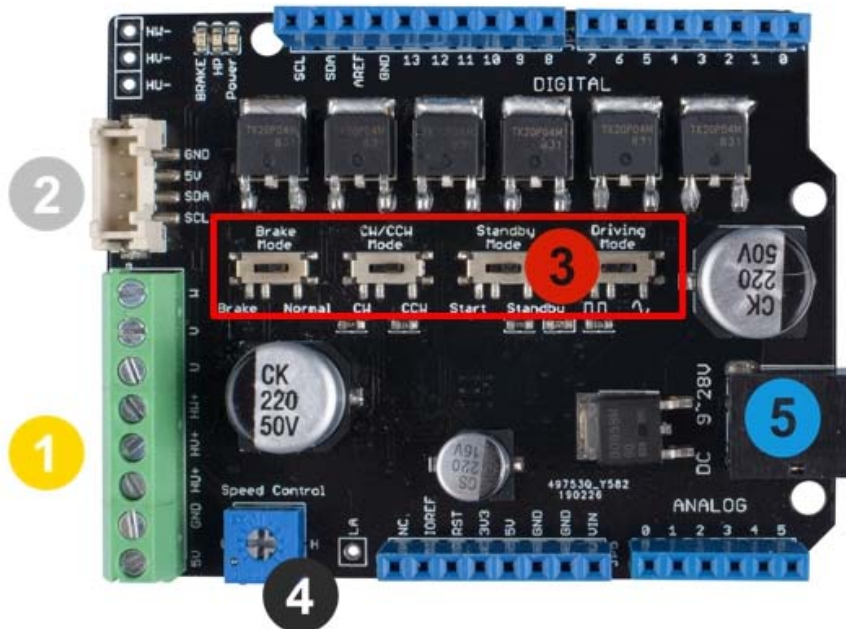
With the onboard Grove I2C interface, you can work with other grove modules with this shield easily, for instance, you can use a [Grove - LCD RGB Backlight](#) to display the Motor speed.

We also released the [TB6605 BLDC Motor Kit for Arduino](#), which is based on this shield and contains an LCD and a high-quality brushless motor to display the Motor speed.

Feature

- Wide input voltage range: 9V ~ 24V
- I2C interface
- Hardware adjustable speed control(On-board Potentiometer)
- Multiple modes available: CW/CCW, Brake/Normal, Sine wave/Square wave

Hardware Overview



1 BLDC Motor Interface

2 Grove I2C Interface:

Connect with other grove module

3 Function switch:

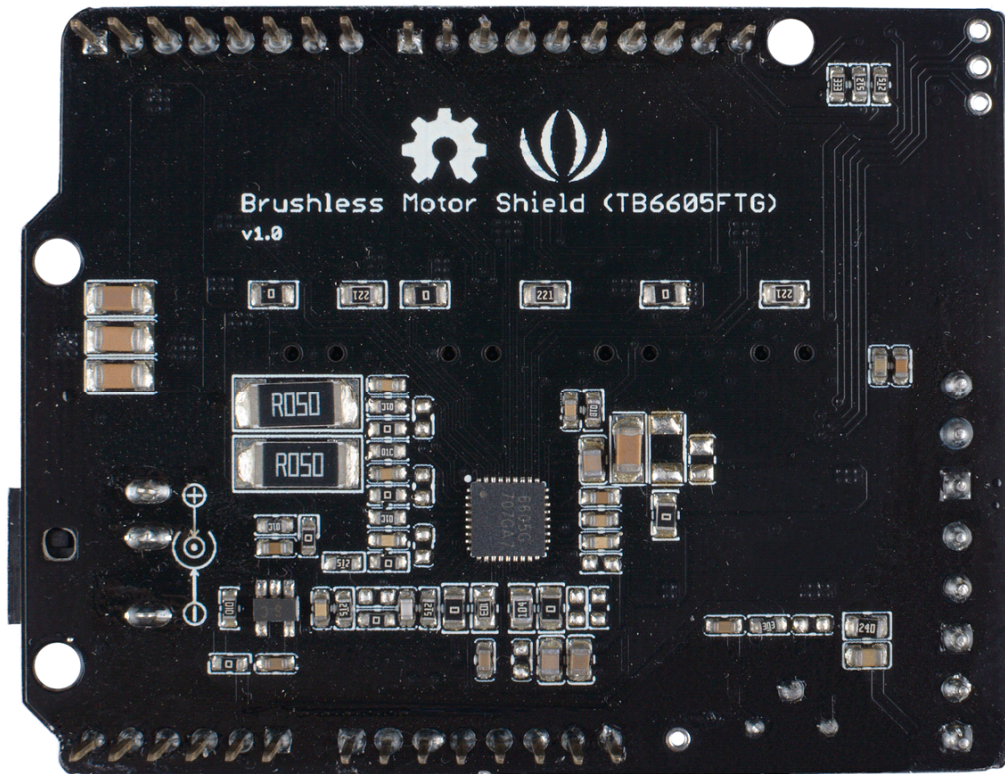
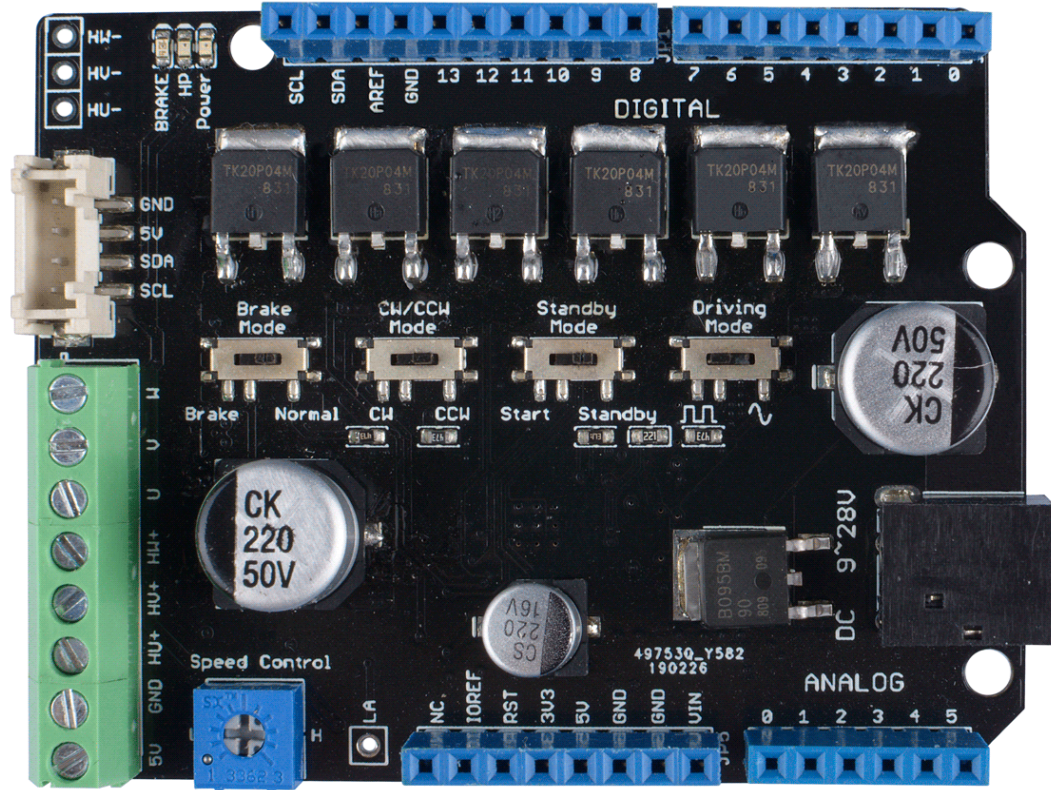
Brake/Normal; CW/CCW; Start/Standby; Sine wave/Square wave

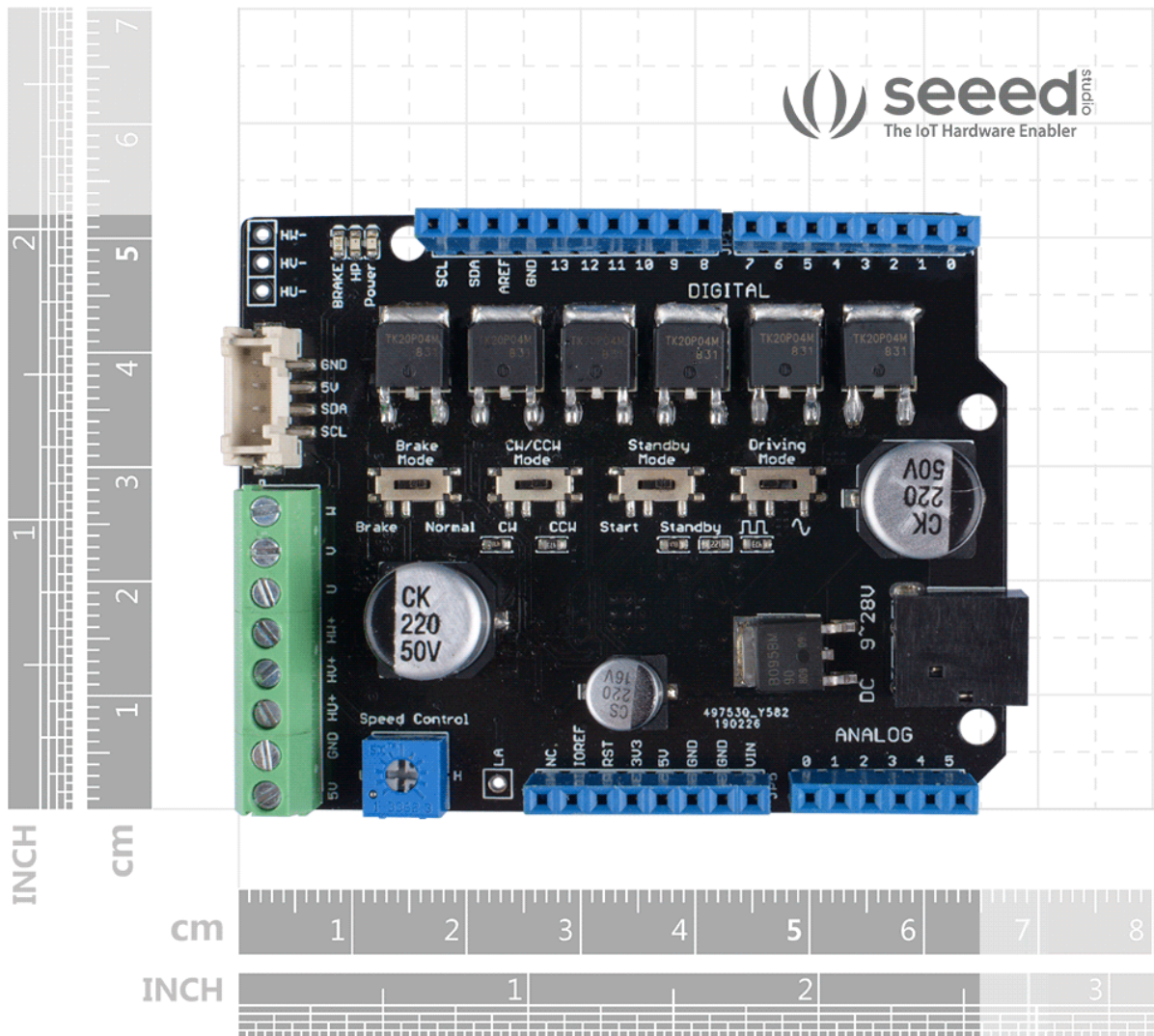
4 Potentiometer:

Speed control

5 DC Power Input:

9V~24V





X-ON Electronics

Largest Supplier of Electrical and Electronic Components

Click to view similar products for [Power Management IC Development Tools](#) *category:*

Click to view products by [Seeed Studio](#) *manufacturer:*

Other Similar products are found below :

[EVAL6482H-DISC](#) [EVAL-ADM1060EBZ](#) [EVAL-ADM1073MEBZ](#) [EVAL-ADM1166TQEBZ](#) [EVAL-ADM1168LQEBZ](#) [EVAL-ADM1171EBZ](#) [EVAL-ADM1276EBZ](#) [EVB-EN5319QI](#) [EVB-EN5365QI](#) [EVB-EN6347QI](#) [EVB-EP5348UI](#) [MIC23158YML EV](#) [MIC23451-AAAYFL EV](#) [MIC5281YMME EV](#) [ADM00513](#) [ADM8611-EVALZ](#) [ADM8612-EVALZ](#) [ADM8613-EVALZ](#) [ADM8615-EVALZ](#) [ADP1046ADC1-EVALZ](#) [ADP1055-EVALZ](#) [ADP122-3.3-EVALZ](#) [ADP130-0.8-EVALZ](#) [ADP130-1.2-EVALZ](#) [ADP130-1.5-EVALZ](#) [ADP130-1.8-EVALZ](#) [ADP160UJZ-REDYKIT](#) [ADP166UJ-EVALZ](#) [ADP1712-3.3-EVALZ](#) [ADP1714-3.3-EVALZ](#) [ADP1715-3.3-EVALZ](#) [ADP1716-2.5-EVALZ](#) [ADP1740-1.5-EVALZ](#) [ADP1752-1.5-EVALZ](#) [ADP1754-1.5-EVALZ](#) [ADP1828LC-EVALZ](#) [ADP1870-0.3-EVALZ](#) [ADP1871-0.6-EVALZ](#) [ADP1873-0.6-EVALZ](#) [ADP1874-0.3-EVALZ](#) [ADP1876-EVALZ](#) [ADP1879-1.0-EVALZ](#) [ADP1882-1.0-EVALZ](#) [ADP1883-0.6-EVALZ](#) [ADP197CB-EVALZ](#) [ADP199CB-EVALZ](#) [ADP2102-1.25-EVALZ](#) [ADP2102-1.2-EVALZ](#) [ADP2102-1.875EVALZ](#) [ADP2102-1.8-EVALZ](#)