



# Grove - FM Receiver

Release date : 9/20/2015

Version : 1.0

Wiki: [http://www.seeedstudio.com/wiki/Grove - FM Receiver](http://www.seeedstudio.com/wiki/Grove_-_FM_Receiver)

Bazaar: <http://www.seeedstudio.com/depot/Grove-FM-Receiver-p-1841.html>

## Document Revision History

---

Revision	Date	Author	Description
1.0	Sep 21, 2015	Victor.He	Create file

## Contents

Document Revision History.....	2
1. Introduction .....	2
2. Features.....	3
3. Interface functions .....	4
4. Usage.....	6
5. Resource.....	7

### *Disclaimer*

*For physical injuries and possessions loss caused by those reasons which are not related to product quality, such as operating without following manual guide, natural disasters or force majeure, we take no responsibility for that.*

*Under the supervision of Seeed Technology Inc., this manual has been compiled and published which covered the latest product description and specification. The content of this manual is subject to change without notice.*

### *Copyright*

*The design of this product (including software) and its accessories is under tutelage of laws. Any action to violate relevant right of our product will be penalized through law. Please consciously observe relevant local laws in the use of this product.*

## 1. Introduction

---

Grove - FM Receiver is a wideband FM receiver module, this module is based on SX6119, it can offers true single-chip voice FM receiver, which is built-in amplifier, VCO, filter and demodulator. The multifunction button provides greater convenience for users to control.

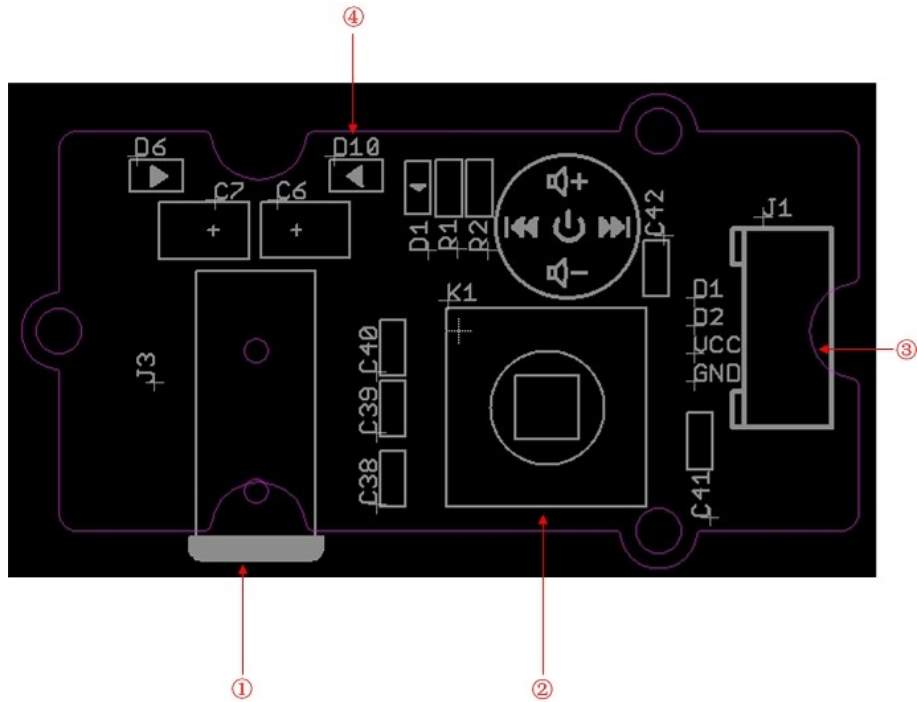
## 2. Features

---

- Grove interface
- FM receiver with a tuning range of 64 MHz to 108 MHz covering Eastern Europe (OIRT), Japan, Europe and US bands
- Lower power consumption
- Multifunction button
- LED Indicator
- Headsets interface

### 3. Interface functions

---



① : Headsets interface:It can drive 16 ohm or 32 ohm earphone or audio.

② : Multifunction button : Change volume and select channel

Center : Open FM/Close FM ( Keeping press 1S )

Up : volume add

Down : volume sub

Left : searching down

Right : searching up

③ : Grove Interface

④ : LED Indicator

FM Close : LED off

FM Open : LED light

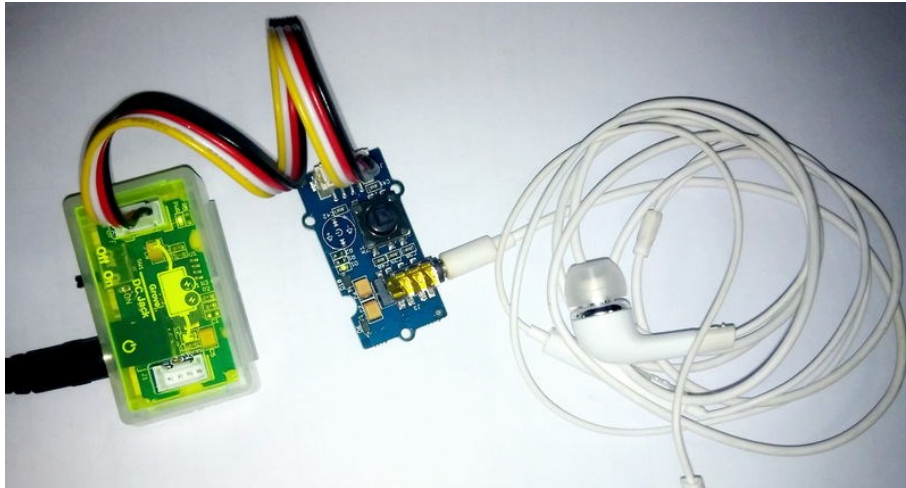
FM Searching : LED flash



## 4. Usage

---

1 ) Part lists : Grove - USB Power, Grove - FM Receiver, Mini Cable, Audio.



## 5. Resource

---

[Grove - FM Receiver Eagle File](#)

[Schematic in pdf](#)

[Datasheet of SX6119](#)

## X-ON Electronics

Largest Supplier of Electrical and Electronic Components

*Click to view similar products for [Sub-GHz Development Tools](#) category:*

*Click to view products by [Seeed Studio](#) manufacturer:*

Other Similar products are found below :

[EVAL-ADF7021DBJZ](#) [EVAL-ADF7021-NDBZ2](#) [EVAL-ADF7021-VDB3Z](#) [EVAL-ADF7023DB3Z](#) [MICRF219A-433 EV](#) [MICRF220-433 EV](#) [AD6679-500EBZ](#) [EVAL-ADF7901EBZ](#) [EVAL-ADF790XEBZ](#) [110976-HMC453QS16G](#) [STEVAL-IKR002V7D](#) [MAX2602EVKIT+](#) [MAX1472EVKIT-315](#) [MAX1479EVKIT-315](#) [STEVAL-IKR002V3D](#) [MAX7042EVKIT-315+](#) [MAX2902EVKIT#](#) [MAX9947EVKIT+](#) [MAX1470EVKIT-315](#) [SKY66188-11-EK1](#) [SKY66013-11-EVB](#) [EVAL-ADF7023DB5Z](#) [DRF1200/CLASS-E 1096](#) [1097](#) [1098](#) [MDEV-900-PRO](#) [DVK-SFUS-1-GEVK](#) [DVK-SFUS-API-1-GEVK](#) [US-SIGFOX-GEVB](#) [STEVAL-IKR002V2D](#) [107755-HMC454ST89](#) [DM182017-2](#) [110961-HMC453ST89](#) [DM182017-1](#) [3179](#) [DC689A](#) [DC1513B-AB](#) [3229](#) [3230](#) [3231](#) [3232](#) [DC1250A-AA](#) [DC1513B-AC](#) [DC1513B-AD](#) [DC1513B-AA](#) [TEL0075](#) [131903-HMC921LP4E](#) [EU-SIGFOX-GEVB](#) [856512-EVB](#)