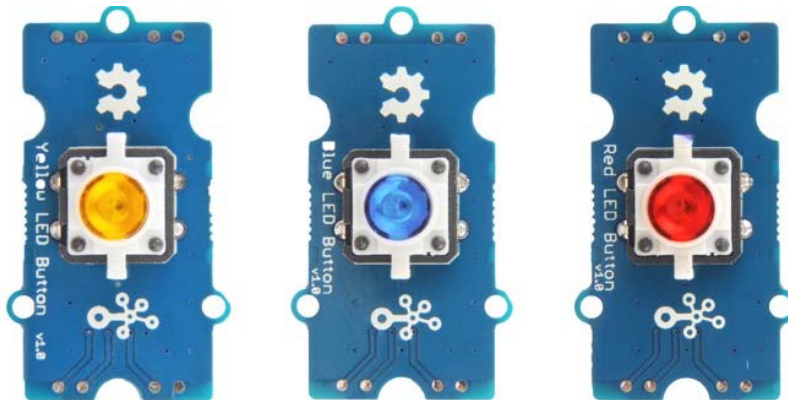




Grove - Blue LED Button

SKU 111020046

Description



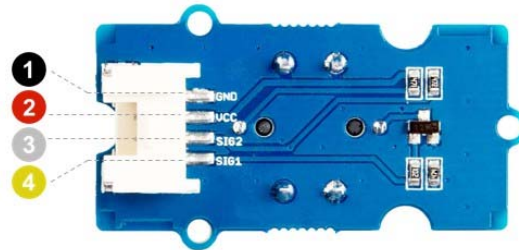
The Grove - LED Button is composed of Grove - Yellow Button, Grove - Blue LED Button and Grove - Red LED Button.

The Grove - Blue LED Button is stable and reliable with a 100 000 times long life. With the build-in LED, you can apply it to many interesting projects, it is really useful to use the LED to show the status of the button. We use a high-quality N-Channel MOSFET to control the LED to ensure the high switching speed and a low consumption. All in all, you want some really awesome button? Here you go ...

Features

- Long operating life
- Easy to use
- Grove Digital interface

Pin Map



- ❶ GND: connect this module to the system GND
- ❷ VCC: you can use 5V or 3.3V for this module
- ❸ SIG2: output the button status, default high
- ❹ SIG1: input the LED control signal, default low

Technical Details

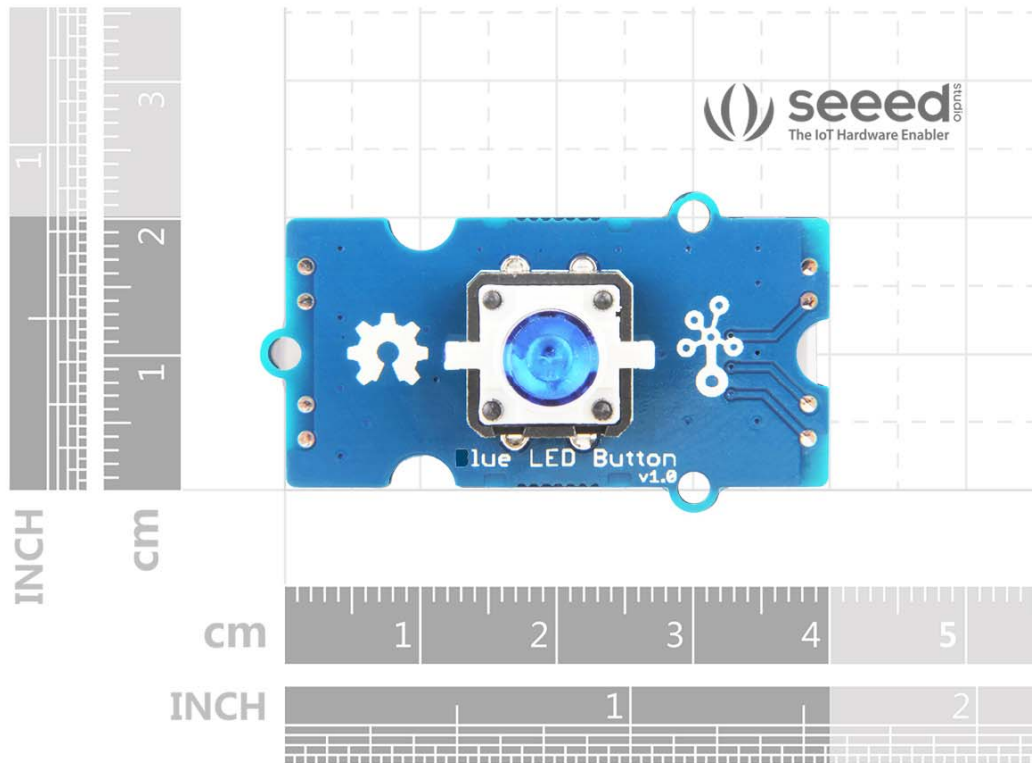
Dimensions	40mm x 20mm x 16mm
Weight	G.W 10.30g
Battery	Exclude
Operating voltage	3.3V/5V
Press Resistance	<100mΩ
Release Resistance	>100MΩ

Part List

Grove - Blue LED Button	1
Grove cable	1

ECCN/HTS

ECCN	EAR99
HSCODE	8536500000



X-ON Electronics

Largest Supplier of Electrical and Electronic Components

Click to view similar products for [Seeed Studio Accessories](#) category:

Click to view products by [Seeed Studio](#) manufacturer:

Other Similar products are found below :

[101990565](#) [114992282](#) [114992268](#) [101990647](#) [103060000](#) [101020004](#) [101020006](#)

[101020012](#) [101020018](#) [101020028](#) [101020038](#) [101020045](#) [101020049](#) [101020052](#)

[101020055](#) [101020056](#) [101020058](#) [101020472](#) [101020580](#) [101020603](#) [101990007](#)

[101990028](#) [101990053](#) [101990058](#) [101990059](#)