



# Water Pressure Sensor G1/4 1.2Mpa

SKU 114991178



## Description

This is a pressure measuring sensor. You can use it in clean, non-corrosive gas and liquid.

## Features

Compact, Easy to Install

High Sealing Performance

High Quality Hall Effect Sensor

RoHS Compliant

## Specifications

Working Voltage: DC 5±0.5V

Working Current: ≤10mA (DC 5V)

Working Voltage: DC 0.5~4.5V

Working Pressure Rate Range: 0~1.2Mpa

Max. Pressure: 2.4Mpa

Destructive pressure: 3.0Mpa

Working Temperature: -20~+ 105°C

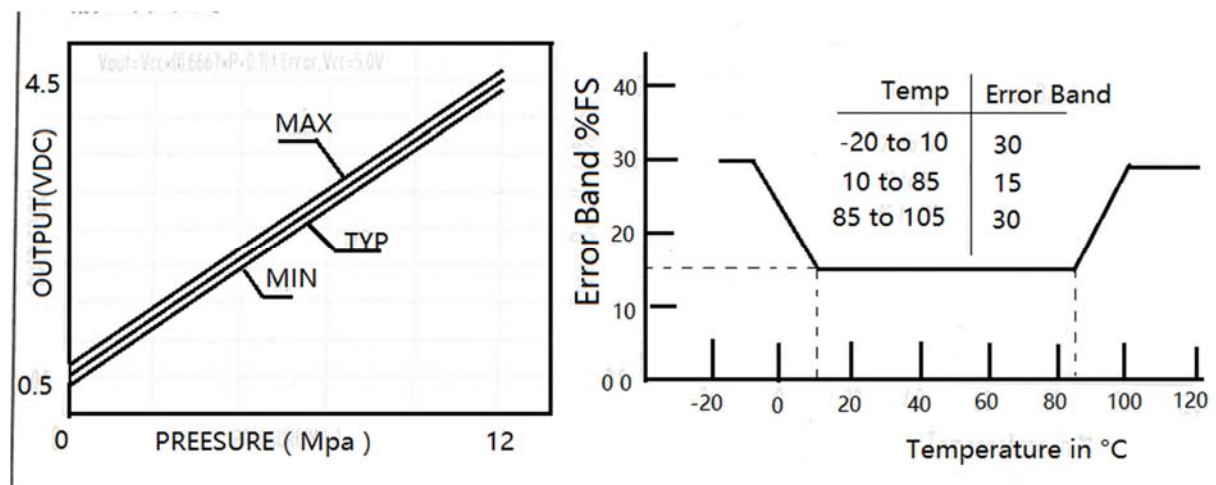
Storage Temperature: -20~+ 105°C

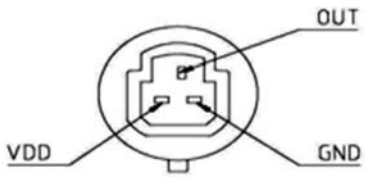
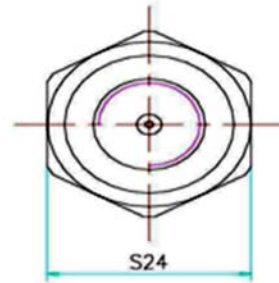
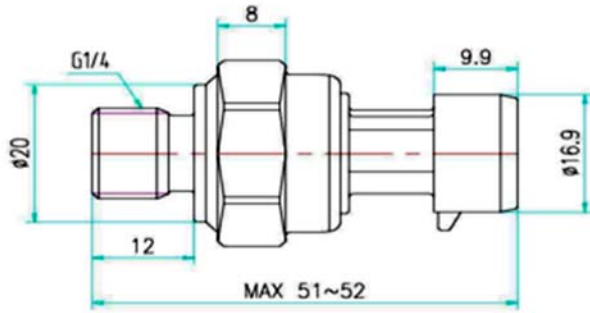
Measurement Accuracy: ±1.5%FS

Response Time: ≤2.0ms

IP65

Cycle Life: 1,000,000 pcs





**引线定义:**

**VCC: RED (电源+)**

**OUT: BLUE (信号输出)**

**GND: BLACK (电源-)**

## Partlist

1 x Water Pressure Sensor

## **X-ON Electronics**

Largest Supplier of Electrical and Electronic Components

*Click to view similar products for [Multiple Function Sensor Development Tools](#) category:*

*Click to view products by [Seeed Studio](#) manufacturer:*

Other Similar products are found below :

[PTC04\\_sensors\\_multi\\_calibration\\_board](#) [RD-KL25-AGMP01](#) [PTC-04-DB-ACT](#) [PTC-04-DB-SPI01](#) [PTC-04-DB-HALL05](#) [FRDM-K22F-SA9500](#) [PTC-04-DB-HALL01](#) [PTC-testbench-Magnetic](#) [GP30-DEV-KIT-F01](#) [EV\\_ICM-20649](#) [MULTI-SENSE-GEVB](#) [FRDM-STBC-SA9500](#) [BRKT-STBC-SA9500](#) [3397](#) [STEVAL-MKIT01V1](#) [EVAL-CN0411-ARDZ](#) [SEN0004](#) [KT-TVOC-200-TB200A](#) [KT-NmHc-200-TB200A](#) [PIM520](#) [PIM518](#) [PIM519](#) [PIM510](#) [103030375](#) [AKX00026](#)