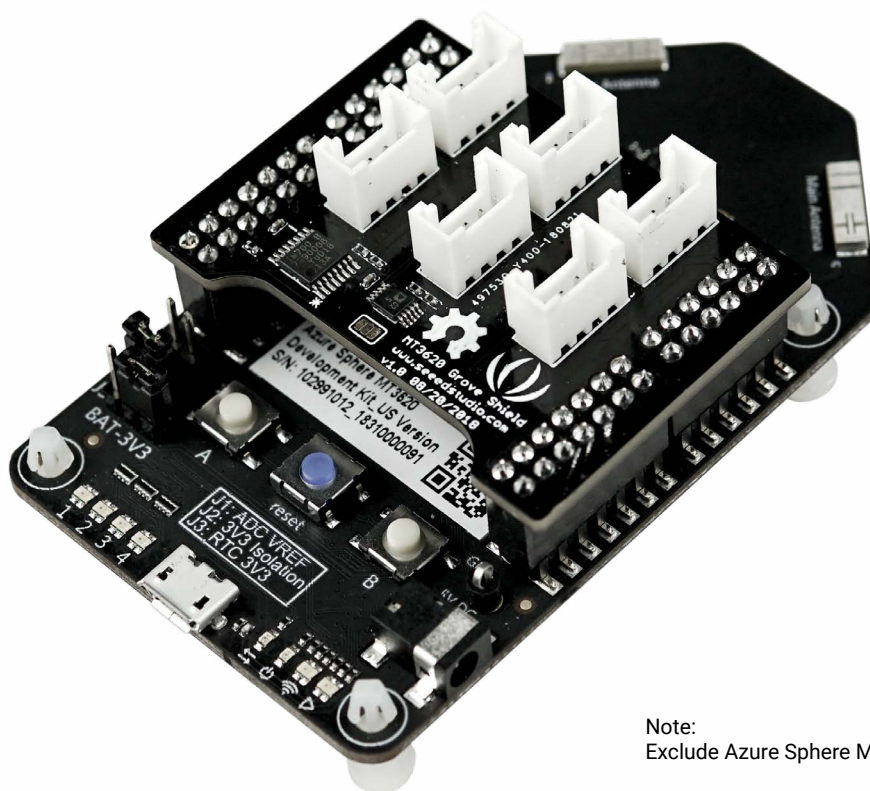


MT3620 Grove Shield



Note:
Exclude Azure Sphere MT3620 development board

Overview

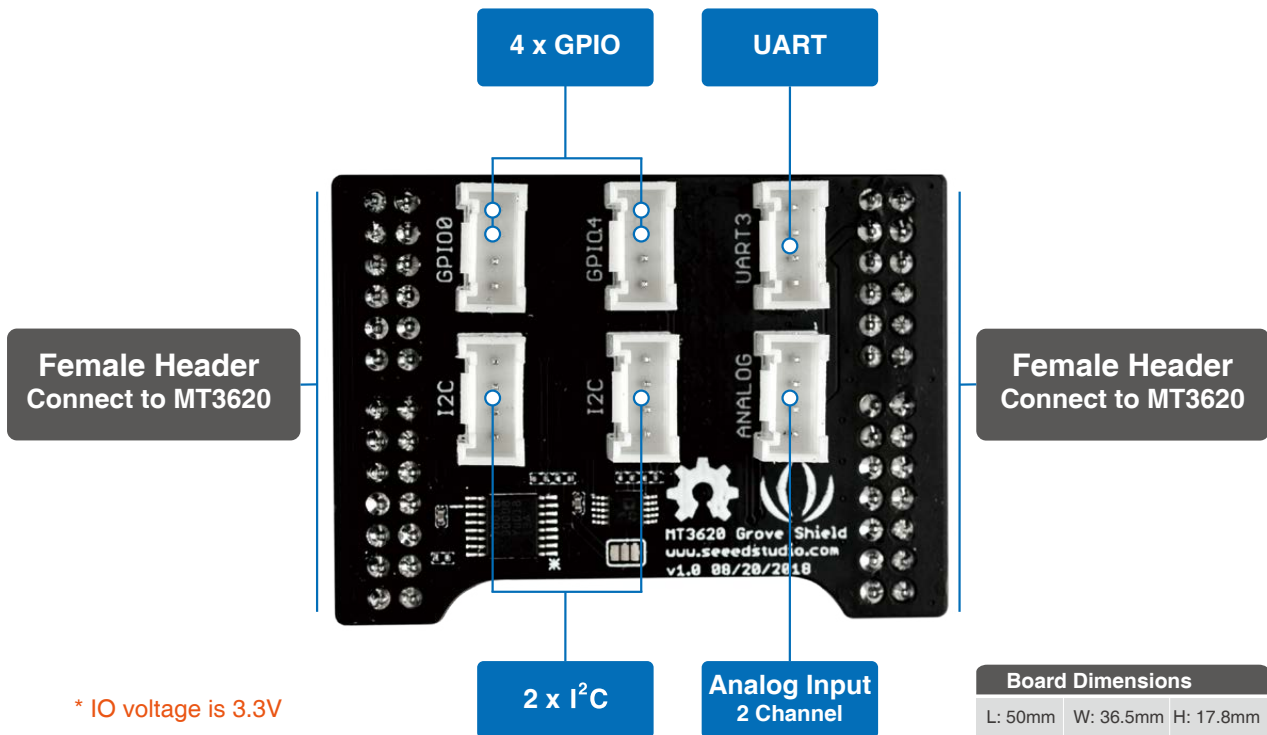
Azure Sphere MT3620 Development Kit comes with four 2.54mm headers for hardware resources extension from MT3620. MT3620 Grove Shield is an add-on breakout board designed for MT3620 Development kit, which enable users to quickly apply sensors modules - [Seeedstudio Groves](#) on MT3620 Development Kit

Azure Sphere SDK has not yet supported ADC and I2C on MT3620. The shield serves as an interface between MT3620 UART port and the external I2C device, like the I2C temperature sensor. The basic function of the shield is helping developer get connected to I2C external device. By using an I2C compatible ADC chip , developer can read the analog data from the shield analog port.

Features

- Master I2C-bus controller with UART interface
- 12-bit ADC, I2C-compatible serial interface
- 6 Grove connectors
 - 1 x UART
 - 2 x I2C
 - 1 x Analog
 - 4 x GPIO

Diagram



Specification

UART to I2C	NXP SC18IM700IPW,128 <ul style="list-style-type: none">• Master I2C-bus controller with UART interface
ADC	ADI AD7992BRMZ-1 <ul style="list-style-type: none">• 12-Bit ADC with I2C-Compatible
IO Voltage	3.3V DC
Operating Temperature	-40~85°C
Dimensions	L:50mm*W:36.5mm*H:17.8mm

For more product information, please visit: www.seeed.cc

X-ON Electronics

Largest Supplier of Electrical and Electronic Components

Click to view similar products for [WiFi Modules \(802.11\)](#) category:

Click to view products by [Seeed Studio](#) manufacturer:

Other Similar products are found below :

[WISE-1520ITB-TDA1E](#) [SX-PCEAN2C-SP](#) [BCM43602KMLG](#) [7265.NGWG.W](#) [ENW-49801A1JF](#) [WH-M2SD50NBT](#) [SX-680-2700-SP](#)
[RN171-IRM481](#) [FXX-3061-MIX](#) [9668C52W10E](#) [EWM-W162M201E](#) [ISM43340-L77-TR](#) [BCM4352KMLG](#) [BCM43520KMLG](#)
[BCM43217KMLG](#) [7265.NGWWB.W](#) [PPC-WL-KIT02-R11](#) [RC-CC2640-A](#) [M113DH3200PS3Q0](#) [M113DH3200US3Q0](#) [SX-PCEAN2c](#) [WT-](#)
[01S](#) [WT8266-S3](#) [ESP-07S](#) [WT8266-S6](#) [ESP-12S](#) [WT-01F](#) [WT8266-S5](#) [ESP-12F](#) [WT32-S1](#) [ESP-WROOM-02UC](#) [ESP-WROOM-02DC](#) [WT-](#)
[01N](#) [ESP32-WROOM-32UC](#) [ESP32-WROOM-32DC](#) [ESP-01](#) [ESP-01S](#) [ESP32-WROOM-32\(16MB\)](#) [ESP32-WROVER-E\(8MB\)](#) [ESP32-](#)
[WROVER-IB\(16MB\)](#) [ESP32-WROVER-E\(16MB\)](#) [ESP32-WROVER-IB\(8MB\)](#) [ESP32-WROOM-32D\(16MB\)](#) [ESP32-WROOM-32U\(8MB\)](#)
[ESP32-WROOM-32U\(16MB\)](#) [ESP32-WROOM-32\(8MB\)](#) [ESP-WROOM-02\(4MB\)](#) [ESP-WROOM-02D\(4MB\)](#) [ESP32-WROVER-E\(4MB\)](#)
[ESP32-WROVER-B\(16MB\)](#) [ESP32-WROVER\(IPEX 4MB\)](#) [EAR00370](#) [EAR00373](#)