



SEFRAM 9816B

4 inputs data logger thermometer, Bluetooth® interface

Record to 4 simultaneous temperatures with thermocouple type K, J, E, T, N, R, S.

New

SEFRAM 9816B is the new data logger thermometer with 4 inputs. It's compatible with K, J, E, N, R, S thermocouple types. The tilt stand makes the measurement viewing easy when the thermometer is set down on a desk. The large LCD backlight screen enable to read the data in any environment. The fast sample rate allows to capture fast temperature changes.

SEFRAM 9816B is provided with USB interface enable to collect and process the data with provided software PC. SEFRAM 9816B is further provided with Bluetooth® interface permitting to operate your device, process and view records compatible with Smartphones : iOS and Android APP available to free download from APP store.

Application

- Compact and easy to use
- High precision in measurement
- Alarms setup possible

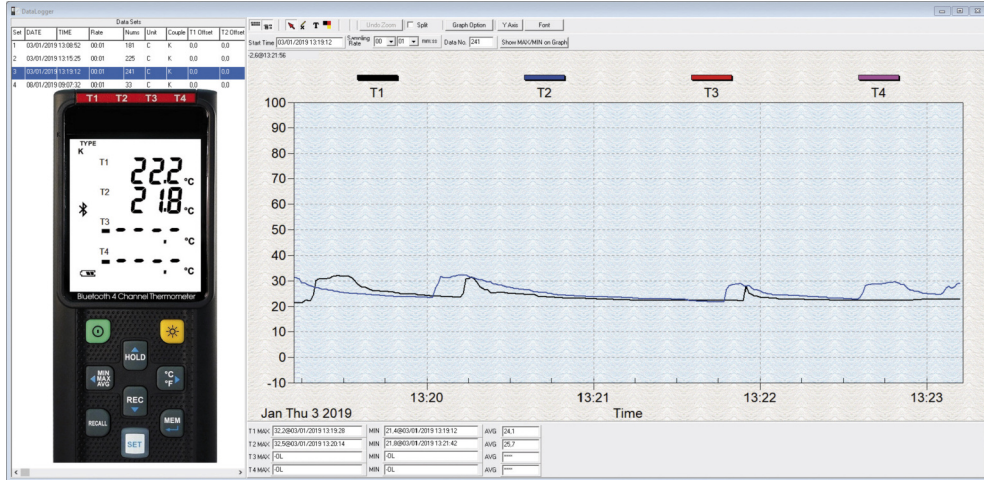
Features

- T1-T2 function
- Hold function
- Alarm function
- Adjustable auto-power off time
- Fast response time with high accuracy
- Thermocouple type K, J, E, T, N, R, S
- Min / Max / Avg measurement each channel
- USB interface, PC software provided
- Bluetooth® interface compatible with Smartphones : iOS and Android APP available to free download from APP store
- Large backlight LCD screen : all channels displayed simultanously
- 32,000 data logger records each channel
- Recall function (to 100 instant save-readings storage)



SEFRAM 9816B

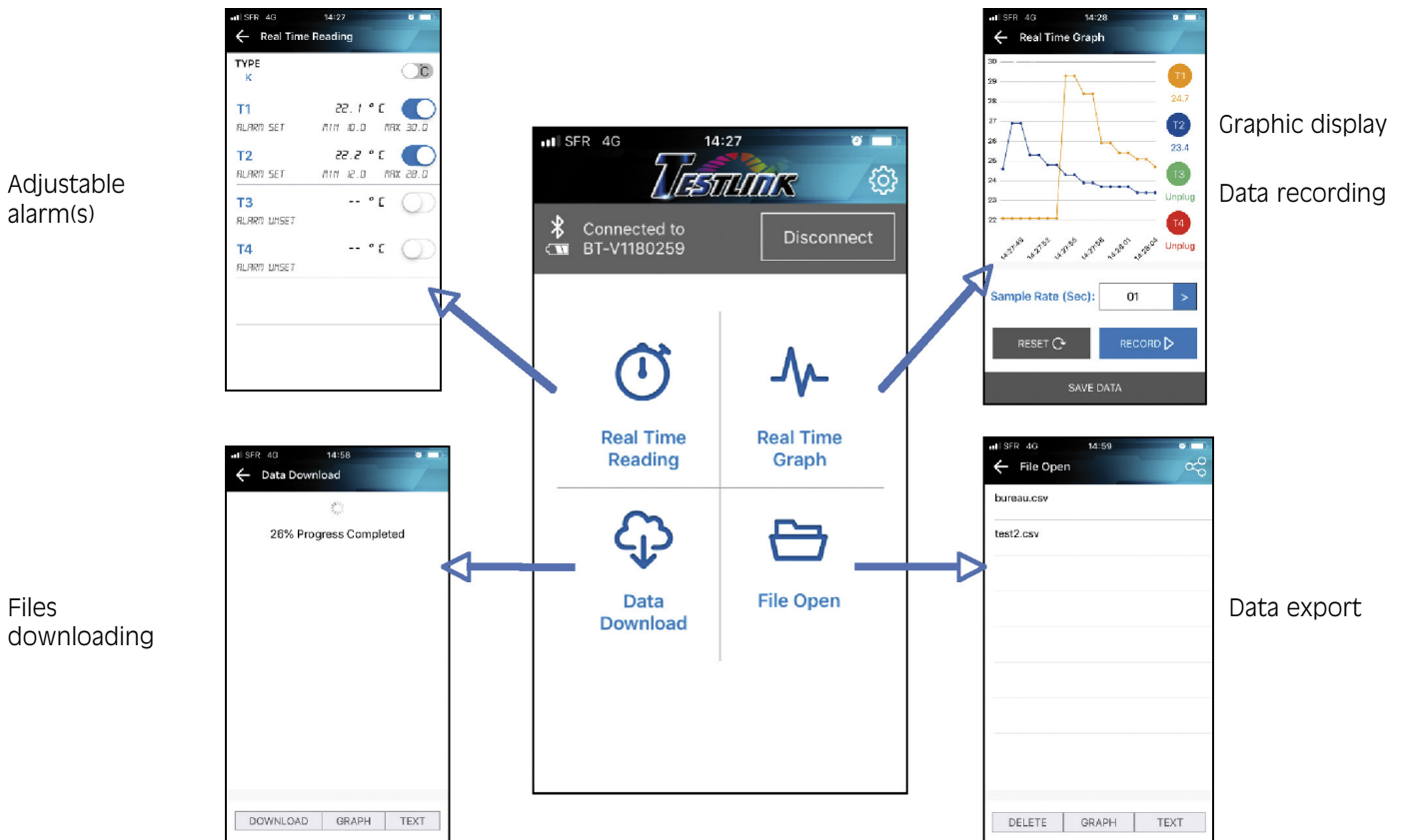
A free data processing software provided with your device



- Remote control via USB interface
- Graphic display for each channel
- Min/Max/Avg indicators for each channel
- Graphic or tabular data saves

This software enable to collect real time data via USB interface, which will preserve the batteries and the storage capacity of your device.

Bluetooth application in free download on iOS® and Android® : Testlink



Technical specifications		SEFRAM 9816B
Temperature range		K: -200°C ~1372°C (- 328°F ~ 2501°F)
		J: -200°C~1000°C (- 328°F ~ 1832°F)
		E: -200°C~750°C (- 328°F ~ 1382°F)
		T: -200°C~400°C (-328 °F ~ 752°F)
		N: -200°C ~1300°C(- 328°F ~ 2372°F)
Resolution		R, S: 0°C ~1767°C(32°F ~ 3212°F)
		Types K, J, E, T, N
		0.1°C < 600°C / 0.1°F < 1000°F
		1°C ≥ 600°C / 1°F ≥ 1000°F
		Types R, S
Accuracy		0.2°C < 600°C / 0.5°F < 1000°F
		1°C ≥ 600°C / 1°F ≥ 1000°F
		J-, K-, E-, T-, N- type: ±(0.1% of reading+0.7°C)
		±(0.1% of reading+1.3°F)
		below -100 ° C ≥ -148 °F
Temperature coefficient		±(0.5% of reading +0.7°C) ±(0.5% of reading +1.3°F)
		R- and S-: ± (0,2% of reading +1,4 °C)
		±(0.2% of reading+2.5°F)
		0.01% of reading + 0.05°C(0.0028°F) per °C (<18°C(64°F) or >28°C(82°F))
		2 time per second
Sample rate		UM-4 or AAA 1.5V battery x 4
Battery type		Bluetooth® OFF : Approx. 120 hours
Battery lifetime		Bluetooth® ON : Approx. 30 hours
		0°C to 50°C (32°F to 122°F)
Operation temperature		10 to 90%RH (no condensing)
Operation humidity		-20°C to 60°C (-4°F to 140°F)
Storage temperature		10 to 75% HR
Storage humidity		187mm (L) x 75mm (W) x 29mm (H)
Dimensions		Approx. 290g
Weight		1 year
Warranty		

Standard accessories : Battery 1.5V AAA x 4 pcs, Windows software, micro USB cable, K type bead probe x 2 pcs, carrying case.



FTSEFRAM9816BAN00 - Specifications can be updated without notice



32, rue Edouard Martel - B.P. 55 - 42009 - St Etienne cedex 2
Tel. +33 (0).4.77.59 36 81
 Fax. +33 (0).4.77.57.23.23
 Website : www.sefram.fr - e-mail : sales@sefram.fr

For assistance and ordering



X-ON Electronics

Largest Supplier of Electrical and Electronic Components

Click to view similar products for [Environmental Test Equipment](#) category:

Click to view products by [Sefram](#) manufacturer:

Other Similar products are found below :

[CW40](#) [F150C10E3DRT](#) [F150LRS](#) [2740212](#) [2837806](#) [4328074](#) [4366444](#) [S-11](#) [382153](#) [700PTP-1](#) [12420](#) [H115](#) [H300](#) [F150-SLC50](#)
[DEM701](#) [HS115](#) [12008761](#) [DT-9851M](#) [DT-321S](#) [WY-HIC401BC802JK](#) [NT-311](#) [NT-312](#) [A13T](#) [A37](#) [VICTOR 230D](#) [A61](#) [W22940](#)
[6921734990129](#) [6921734990112](#) [STHT0-77365](#) [SEFRAM9892](#) [1100-PT100001](#) [STHT77649-1](#) [STHT77648-1](#) [STHT1-77409](#) [MAGNES DO](#)
[ST-140](#) [AKCELEROMETR DO ST-140](#) [LM120A](#) [1-77-023](#) [1-77-132](#) [UT305S](#) [TM-751](#) [SEFRAM9891](#) [STHT77498-1](#) [FMHT0-77422](#) [0-](#)
[77-030](#) [STHT0-77363](#) [EL-PDF-1-002](#) [STHT77065-0](#) [FLK-SMFT-1000/PRO](#)