

# Notes:

**1. Allow clearance for finger squeeze access from the two sides shown.**

**2. No tracks or vias in the shaded "KEEP OUT" AREA.**

**3. No other track or signal within .02" of any contact pad.**

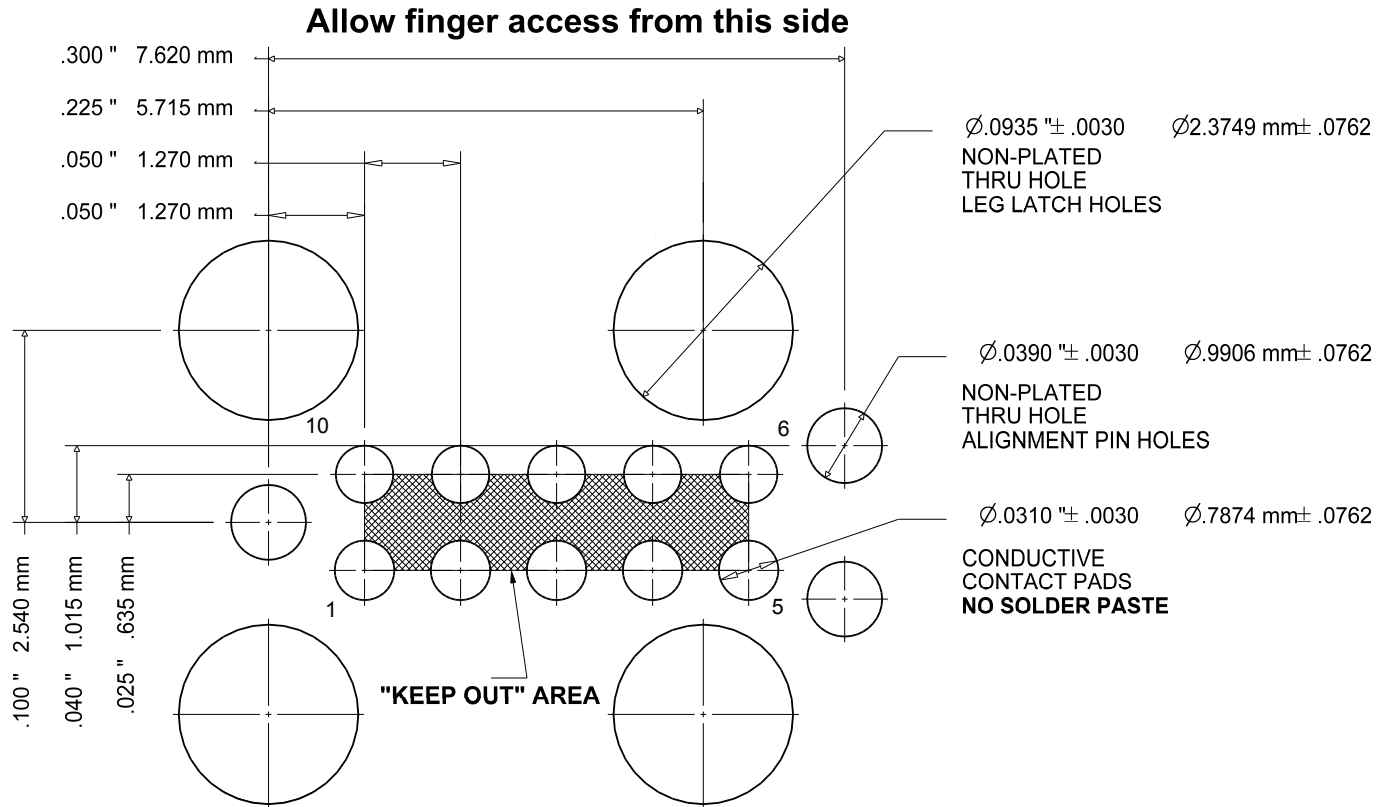
**4. Do not allow solder paste on the contact pads. It is essential to eliminate any hole in the solder paste-mask (solder stencil) layer. If this is not possible make the contact pads thru-hole with a finished hole size of .008" or less.**

**5. Leg and alignment holes may be plated and used as vias but ensure minimum finished hole size meets specified tolerances.**

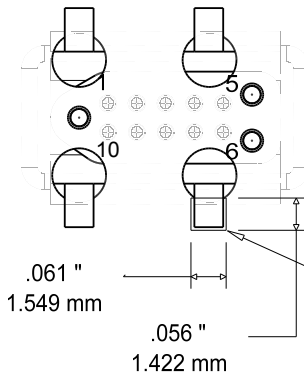
**6. To prevent purchasing confusion, please specify DNL in your BOM.**

## PCB Footprint for J-LINK Needle Adapter

ZONE	A		12/2/10	MS
------	---	--	---------	----



PCB BOTTOM VIEW



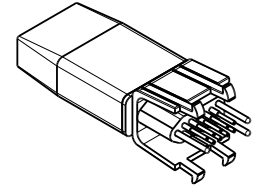
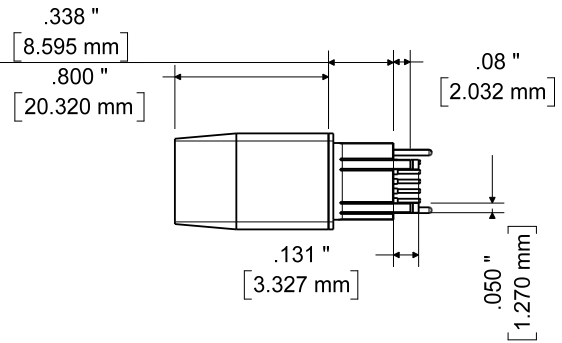
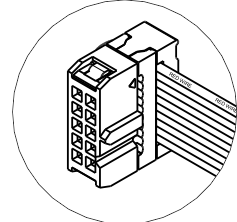
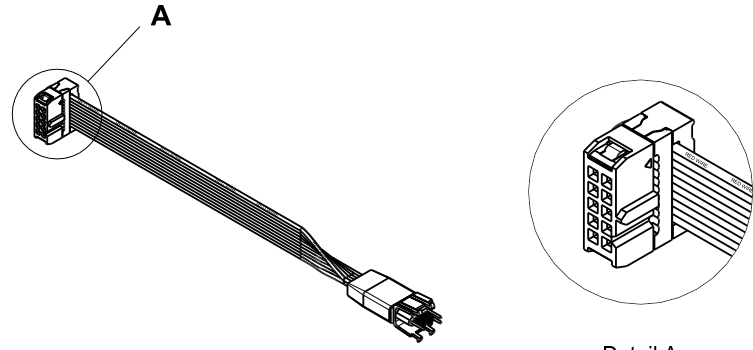
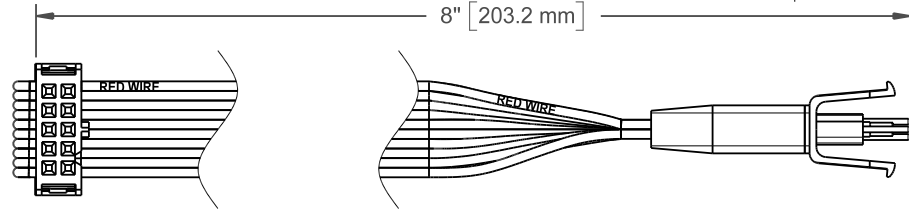
ALLOW A .061 x .056 SQUARE AREA OF CLEARANCE FOR EACH FOOT

Allow finger access from this side

SIZE <b>A</b>	FSCM NO.	DWG NO.	REV <b>A</b>
SCALE 7:1	SHEET 1 of 3		

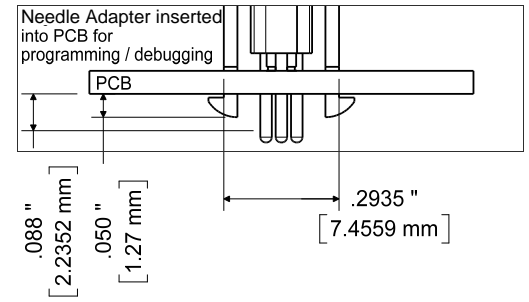
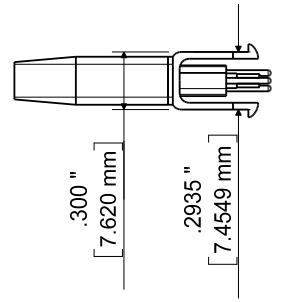
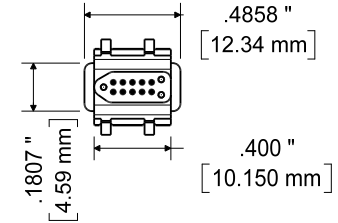
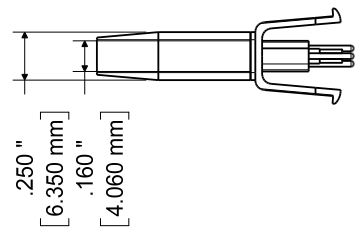
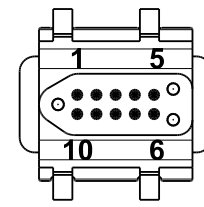
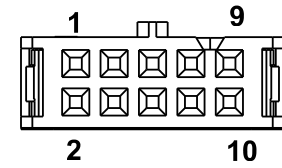
**NOTE:**  
Dimensions subject to change

ZONE	A		12/2/10	MS
------	---	--	---------	----



END VIEW  
2x5 0.1" PITCH  
IDC CONNECTOR

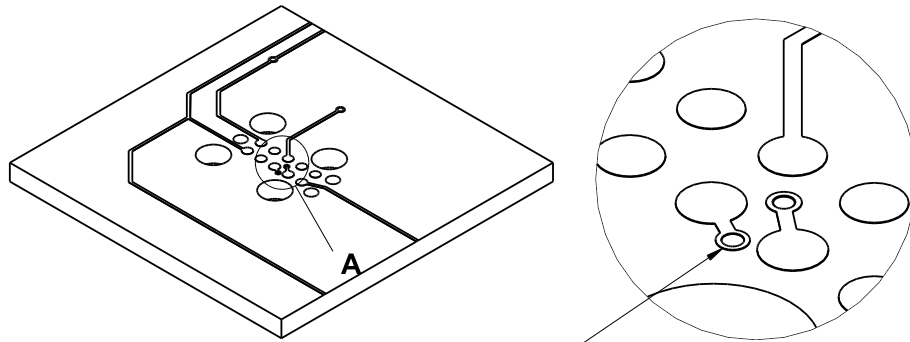
END VIEW  
10 PIN  
CONNECTOR



Protected by U.S. Patent Nos. 7,878,834, 8,057,248, International Patent Pending.

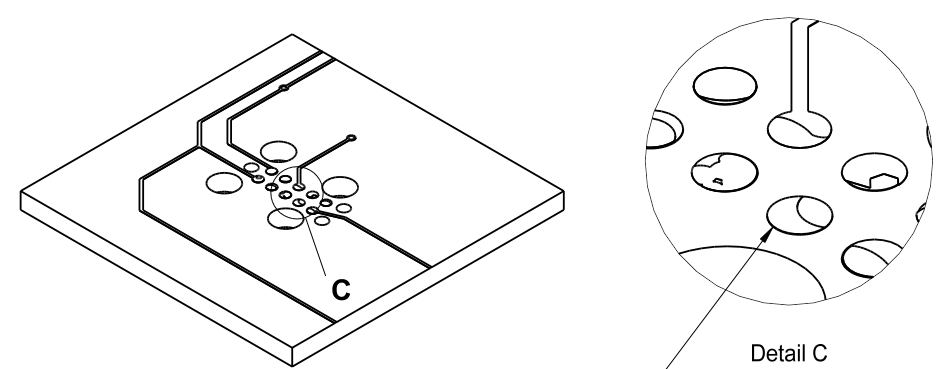
SIZE <b>A</b>	FSCM NO.	DWG NO.	REV <b>A</b>
SCALE		SHEET 2 OF 3	

# Layout Problems to Avoid



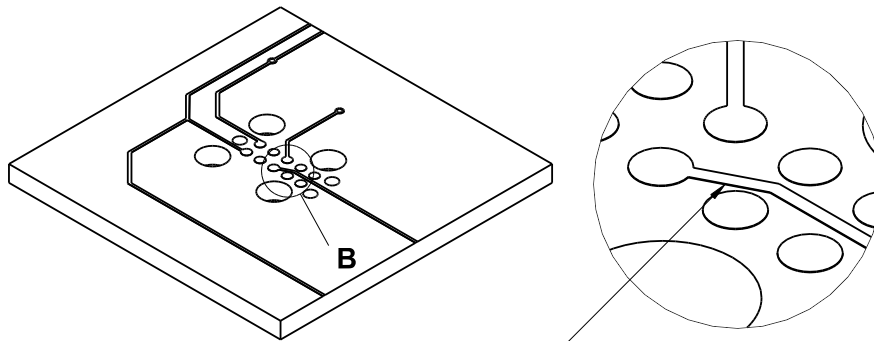
Detail A

Vias between contact pads



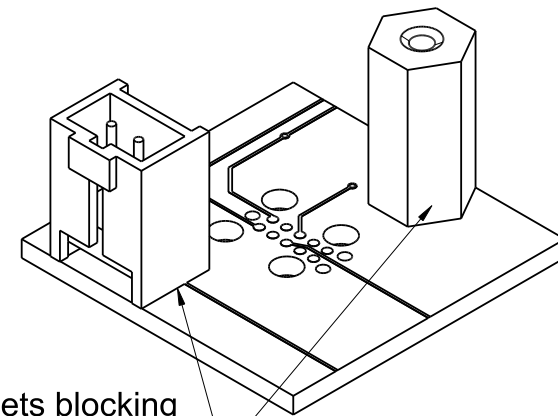
Detail C

Do not deposit solder paste on contact pads. View Solder Paste Mask (Solder Stencil) layer in pad-stack and eliminate any hole.



Detail B

Traces less than .02" away from contact pad or in "KEEP OUT" area



Large componets blocking finger access to the Needle-Adapter's leg tabs.

## X-ON Electronics

Largest Supplier of Electrical and Electronic Components

*Click to view similar products for [Sockets & Adapters](#) category:*

*Click to view products by [Segger Microcontroller](#) manufacturer:*

Other Similar products are found below :

[6508-0-00-01-00-00-33-0](#) [AC164348](#) [1262](#) [22827](#) [AC164353](#) [TDGL015](#) [SA247](#) [SM64TQ-ACTEL-1](#) [70-0036](#) [8.06.03](#) [DS91230+](#) [SMPA-ISP-ACTEL-3-KIT](#) [16017](#) [LFVDBGF](#) [KIT 70601-3](#) [SM132CQ-ACTEL](#) [IPC0181](#) [IPC0175](#) [IPC0165](#) [AC164397](#) [conga-Thin MITX/eDP to DP Adapter](#) [SLG46621V-SKT](#) [SLG46722V-SKT](#) [ML-ADP-EVN](#) [ASA.01](#) [ASA.09](#) [ASA.12](#) [ASA.14](#) [TOOLSTICK990MPP](#) [C305000ACP2](#) [110-83-320-41-605101](#) [110-83-632-41-605101](#) [110-83-640-41-605101](#) [110-83-628-41-605101](#) [116-83-306-41-001101](#) [PA0003](#) [PA0007](#) [PA0009](#) [PA0035](#) [PA0085](#) [PA0096](#) [IPC0079](#) [ATARD-DBGADPT](#) [80-000286](#) [ATSTK600-RC46](#) [ATSTK600-RC88](#) [ATSTK600-SC06](#) [ATSTK600-RC78](#) [SPC560PADPT64S](#) [AC164345](#)