



- +
- +
- +
- +

+

- +
- +

» Measurement+Patch Adapter

J-Link Measurement+Patch Adapter

The J-Link Patch Adapter allows easy customized wiring between J-Link and targets that do not provide a standard debug connector that fits to any of the adapters available for J-Link (e.g. the Discovery Boards from ST Microelectronics). It comes with a set of colored jumper wires, allowing easy differentiation of the debug signals. The J-Link Patch Adapter also provides test points for all debug signals to allow easy access to them for checking signal integrity. It has a standard 20-pin 0.1" socket towards the J-Link debug probe and a standard 20-pin 0.1" header on the target side, so it can be plugged-in directly to J-Link, maintaining a 1:1 connection. For increased flexibility VTref on pin 1 and the target supply voltage on pin 19 can be interrupted by means of two jumpers.



[Click to enlarge](#)



[Click to enlarge](#)

J-Link Measurement+Patch Adapter in use



[Click to enlarge](#)

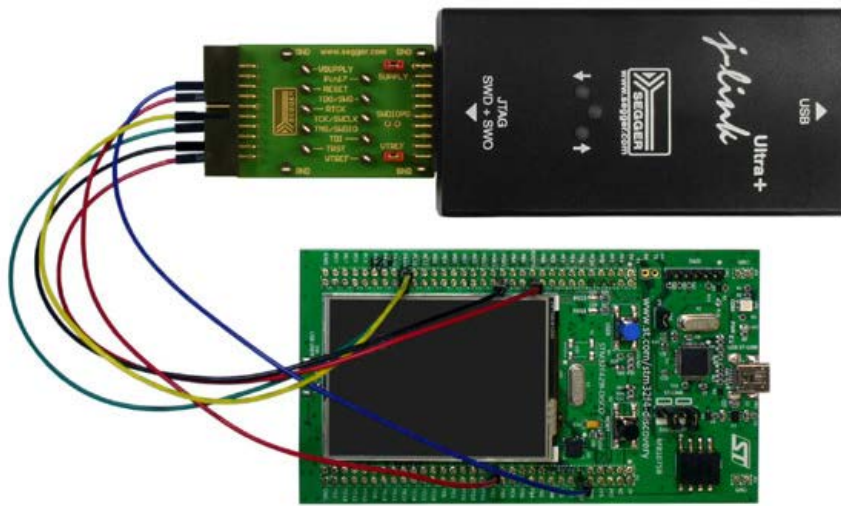
 **Head office Germany**

Phone: +49-2103-2878-0
 Fax: +49-2103-2878-28
 E-mail: info@segger.com
www.segger.com

 **US office**

Phone: +1-978-874-0299
 Fax: +1-978-874-0599
 E-mail: info@segger-us.com
www.segger-us.com





[Click to enlarge](#)

[Imprint](#) [Disclaimer](#) [Sitemap](#)

[back to top](#)

X-ON Electronics

Largest Supplier of Electrical and Electronic Components

Click to view similar products for [segger microcontroller manufacturer](#):

Other Similar products are found below :

[SD Card Adapter](#) [5.05.10](#) [8.06.03](#) [5.16.01](#) [FLASHER PORTABLE](#) [5.50.01.US](#) [US POWER ADAPTER FOR FLASHER 5/ST7](#) [5.17.01](#)
[8.20.00](#) [6.68.18](#) [8.06.17](#) [J-Link ARM-14 Adapter](#) [8.06.13](#) [6.32.32](#) [6.30.00](#) [6.68.20](#) [8.06.21](#) [8.07.10](#) [8.14.28](#) [8.06.14](#) [J-LINK SUPPLY](#)
[ADAPTER](#) [6.68.19](#) [8.06.24](#) [8.06.13](#) [J-LINK MEASUREMENT+PATCH ADAPTER](#) [8.06.23](#) [5.09.01](#) [FLASHER STM8](#) [6.37.04](#) [6.37.01](#)
[JTAG Isolator](#) [J-Link RX Adapter](#) [J-Link TI-CTI-20 Adapter](#) [8.06.18](#) [5.17.01](#) [FLASHER PRO](#) [8.07.00](#) [JTAG ISOLATOR](#) [6.90.00](#) [8.06.09](#) [J-](#)
[LINK MICROCHIP ADAPTER](#) [8.06.05](#) [10-PIN NEEDLE ADAPTER](#) [8.06.22](#) [8.06.25](#) [Flasher STM8](#) [8.06.26](#) [8.18.00](#) [8.06.05](#) [8.06.03](#) [J-](#)
[LINK 14PIN TIADAPTER](#) [8.06.06](#) [J-LINK TI CTI20ADAPTER](#) [5.16.02](#) [8.06.19](#) [5.07.01](#) [FLASHER ARM](#) [J-Link PRO](#) [8.06.28](#) [Flasher](#)
[ARM](#) [J-Link ULTRA+](#) [8.16.28](#) [J-LINK ULTRA+](#)