

# Thermal Printer

Product Catalog 2018-2019



# Why direct thermal?

Direct thermal printers are widely used in everyday life, including medical devices, self-service technology, point-of-sale, mobile applications, and more.

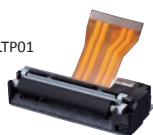
## EFT-POS



**EFT-POS (Electronic Funds Transfer at Point of Sale) is expanding market with rise in demand!**

SII offers best solution of thermal printing to EFT-POS market since its dawn. SII Thermal Printer has contributed to spread thermal printing technology in EFT-POS market and became our bestseller mechanism.

LTP01



2 inch

Low Voltage

Small-footprint

LTP02



## POS/ECR



**Using thermal printer in ECR (Electronic Cash Register) has been started in European market and Now spread throughout the world!**

In recent years, thermal printer is widely used for ECR market expected higher cost-effective, and for POS market expected sophisticated-features & heavy-duty.



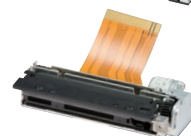
RP-E10

2 to 3 inch

High speed printing

Small-footprint

CAPD Series



LTPD Series

## Medical Measuring



**Best for data and chart printing, what is more easy maintenance and quiet!**

SII Thermal Printer is quiet, cleanness and easy maintenance which has been adapted for the medical and the measurement equipment for long time.



DPU-414

2 to 4 inch

Quiet

Chart printing



DPU-D2

# Thermal Printer Product Catalog

Direct thermal technology produces an image by applying a heating element to specially treated thermal paper. Unlike other printing formats, it operates with few moving parts and does not consume toner or ribbons. This translates into reliable long-life performance and reduced maintenance costs.

With precision engineering Seiko Instruments continues to build on direct thermal's advantages.

We offer a complete line of reliable high performance printers with flexible, small footprint designs that help streamline the integration process. Rely on dependable Seiko Instruments printers and components to tackle even the toughest thermal printing requirements.



**Reliable SII's thermal printers are the best matches with the KIOSK terminals printing receipt and ticket and so on!**

SII's wide-variety of product line helps any printing demands on self-service terminal / ATM / ticketing applications.



CAPM347



LTP04  
(With auto cutter)

2 to 3 inch

High reliability

Auto cutter



**Demand of Mobile printing is expanding in various applications!**

Mobile printing has become a critical tool in industrial, logistics and retail market.

With utilizing smartphone or tablet PC, it will be widely expanding its business field more over.



MP-A40



MP-B20

2 to 4 inch

Compact & light-weight

Wireless

## CONTENTS

- 1 Why direct thermal printing
- 3 Product Classification Table
- 4 Peripherals Guide

- 5 Low Voltage  
LTPD245/345, CAPD245/345  
LTP01 Series, LTP02 Series  
LTPJ245

- 10 24 Volt  
LTP04, LTPD247/347  
CAPD247/347, CAPM Series  
CAP9000 Series

- 15 POS Printer  
RP-E10 Series, RP-D10 Series

- 17 Mobile Printer  
MP-A40 Series, MP-B20  
DPU-S Series

- 20 Standalone Printing Unit  
DPU-414

- 21 Panel-mount Printing Unit  
DPU-D Series

- 22 Serial Printer  
MTP Series

- 23 Other Models Line up  
LTPU245, LTPZ series, LTPV series  
LTPC series, LTPH245  
LTP8235, LTP1245  
STP411, SAM-1245  
CAPG247/LTPG247, LTP2000 series  
LTPF series, APU-G247

- 26 Thermal Paper List

# Product Classification Table

## Line Thermal Printer Mechanism

Classification	Product	Paper width (mm)	Resolution (dots/mm)	Product category
Low voltage	CAPD245	58	8	Easy paper operation mechanism
	CAPD345	80	8	
	LTPD245	58	8	
	LTPD345	80	8	
	LTP01	58	8	
	LTP02	58	8	
	LTPJ245	58	8	
24 volt	LTP04	80	8	Easy paper operation mechanism
	CAPD247	58	8	
	CAPD347	80	8	
	LTPD247	58	8	
	LTPD347	80	8	
	CAPM347	58 / 60 / 80 / 83	8	
	CAPM347	58 / 60 / 80 / 83	8	Loading mechanism
	CAP9247	58 / 60	8	
CAP9347	80 / 82.55	8		

## Serial Printer Mechanism

Classification	Product	Paper width (mm)	Resolution (dots/mm)	Dot composition (H×W)
Low voltage	MTP102-16B	38	–	7 × 110
	MTP201-20B	58	–	7 × 138
	MTP201-24B	58	–	7 × 166
	MTP401-40B	80	–	7 × 278
	MTP201-G166	58	–	8 × 166

## Printer Unit

Classification	Product	Paper width (mm)	Resolution (dots/mm)	Dot composition (H×W)
Mobile printer	MP-B20	58	8	–
	MP-A40	80 / 100 / 105 / 112	8	–
	DPU-S245	58	8	–
	DPU-S445	112	8	–
POS printer	RP-E10/E11	58 / 80	8	–
	RP-D10	58 / 80	8	–
Standalone printer unit	DPU-414	112	–	9 × 320
Panel-mount printer unit	DPU-D2	58	8	–
	DPU-D3	80	8	–

# Peripherals Guide

## Printer Mechanism

Classification	Product	Auto cutter	Interface	CPU	Winder unit
Low voltage	CAPD245	Included	IFD501-01UK IFD501-01SK	PTD50P01	-
	CAPD345	Included			
	LTPD245	-			
	LTPD345	-			
	LTP01	-	-	-	-
	LTP02-245-13	-	-	PT02-5SU	-
	LTP02-245-A1	-	-	-	-
	LTP02-245-C1	-	-	PT02-3U	-
	LTPJ245	-	-	-	-
24 volt	LTP04	ACU04	-	-	-
	CAPD247	Included	IFD001-01UK IFD001-01SK	PTD00P01	-
	CAPD347	Included			
	LTPD247	-			
	LTPD347	-	-	-	-
	CAPM347	Included	IFM201-01UK	PTM20P01	-
	CAP9247	Included	-	-	-
	CAP9347	Included	-	-	-
Serial Printer	MTP102	-	-	-	-
	MTP201	-	-	-	-
	MTP401	-	-	-	-

## Printer Unit

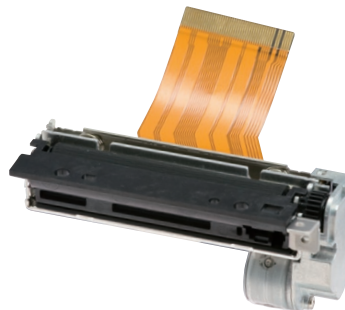
Product category	Product	Power supply	Battery pack	Battery charger	Power cable	Other
Mobile printer	MP-B20	-	BP-B0326	-	-	Cradle CDL-B01K-1
	MP-A40	PW-D0940-W2	BP-A0720	PWC-A071-A1 (single) PWC-A074-A1 (quad)	CB-JP04-18A	Car charger CC-A12-A
					CB-US04-18A	
					CB-CE01-18B	
	DPU-S245	PW-D0940-W2	BP-L0716	PWC-L07C1	CB-UK01-20A	Carrying case CVR-C01-1
					CB-JP04-18A	
					CB-US04-18A	
					CB-CE01-18B	
	DPU-S445	PW-D0940-W2	BP-L0725	PWC-L07C1	CB-CH01-20A	Carrying case CVR-B01-1
					CB-UK01-20A	
					CB-JP04-18A	
					CB-US04-18A	
CB-CE01-18B						
POS printer	RP-E10 / E11 RP-D10	PW-E2427-W1 (Outside the US)	-	-	CB-JP07-20A	Wall mounting kit WLK-B01-1
		PW-E2427-W2 (US only)			CB-US05-20A	
		CB-CE04-20A				
		CB-UK03-20A				
Standalone printer unit	DPU-414	PW-C0725-W2-U	BP-4005	-	-	-
		PW-C0725-W2-E				
		PW-C0725-W2-C				
		PW-C0725-W2-K				
		PW-C0725-W2-B				

Thermal Printer Mechanism

# LTPD245/345



LTPD345 (Horizontal)



LTPD245 (Vertical)

- High performance in compact design
- Max. printing speed (LTPD245) : 100mm/sec
- Platen latch function
- Label printing \*Under specific conditions only.

Low Voltage

24 Volt

POS Printer

Mobile Printer

Model		LTPD245	LTPD345
Printing	Method	Thermal line dot printing	
	Number of dots/line	384	576
	Resolution (dots/mm)	8	
	Paper width (mm)	58 <sup>+0</sup> <sub>-1</sub>	80 <sup>+0</sup> <sub>-1</sub>
	Printing width (mm)	48	72
	Speed (mm/sec) max	100	80
	Paper path	Curved	
Detection	Head temperature	By thermistor	
	Platen position	By mechanical switch	
	Out of paper	By photo interrupter	
Power supply (V)	Operation voltage (V <sub>dd</sub> )	2.7 to 3.6 / 4.75 to 5.25	
	Operation voltage (V <sub>p</sub> )	4.75 to 9.5	
Peak current (A)	Head	3.66 (9.5V / 64dots) / 5.49 (9.5V / 96dots)	3.60 (9.5V / 64dots) / 5.40 (9.5V / 96dots)
	Motor	0.6	
Service Life	Pulse activation (pulse)	100 million	
	Abrasion resistance (km)	50 <sup>*1</sup>	
Operating temperature (°C)	-10 to 50 <sup>*1 *3</sup>		
Dimensions (W×D×H mm)	Horizontal	69.0 × 30.0 × 15.0 <sup>*2</sup>	91.0 × 30.0 × 15.0 <sup>*2</sup>
	Vertical	69.0 × 15.0 × 30.0 <sup>*2</sup>	91.0 × 15.0 × 30.0 <sup>*2</sup>
Mass (g)	Approx. 40		Approx. 58

\*1 Use recommended thermal papers. \*2 Excluding protrusion. \*3 -30°C to 70°C. Supported by designated conditions only.

### Interface

Model	IFD501-01UK	IFD501-01SK	
CPU	PTD50P01		
Thermal printer	LTPD245, LTPD345, CAPD245, CAPD345		
Operating voltage (V)	V <sub>p</sub> : 4.75 to 9.5		
Character matrix (H×W dots)	16 dots characters: 16 × 8, 16 × 16 24 dots characters: 24 × 12, 24 × 24		
Character type	Extended graphics character set	Yes	Yes
	Katakana character set	Yes	Yes
	Codepage 1252	Yes	Yes
	Optional font	Yes	Yes
	Downloaded character	Yes	Yes
	User-defined character	Yes	Yes
JIS 1 & 2 level kanji	Yes	Yes	
Communication interface	USB (2.0)	Serial (RS-232C)	
Dimensions (W×D×H mm)	69.0 × 50.0 × 14.0		
Software <sup>*4</sup>	Printer driver, Linux <sup>®</sup>		

\*4 Please see official homepage "www.sii-ps.com" for details.

### CPU

Model	PTD50P01
Thermal printer	LTPD245, LTPD345, CAPD245, CAPD345
Package form	120pin QFP
Operating voltage (V)	V <sub>p</sub> : 4.75 to 9.5, V <sub>cc</sub> : 3.0 to 3.6
Input frequency (MHz)	12 +/- 0.01%
Configuration	C-MOS LSI
Communication interface	Parallel, Serial, USB
Character type	Extended graphics character set, Codepage 1252 Other characters is available with CGs <sup>*5</sup> or external ROM
Character matrix (H×W dots)	16 dots characters: 16 × 8, 16 × 16 24 dots characters: 24 × 12, 24 × 24
Dimensions (W×D×H mm)	16.0 × 16.0 × 1.7
Software <sup>*6</sup>	Printer driver, Linux <sup>®</sup>

\*5 CG ROM: Japanese \*6 Please see official homepage "www.sii-ps.com" for details.

Standalone Printer Unit

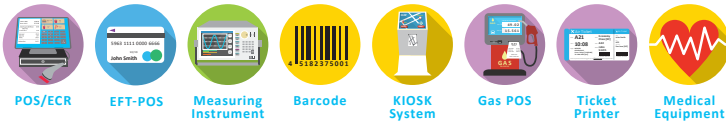
Panel-Mount Printer Unit

Serial Printer

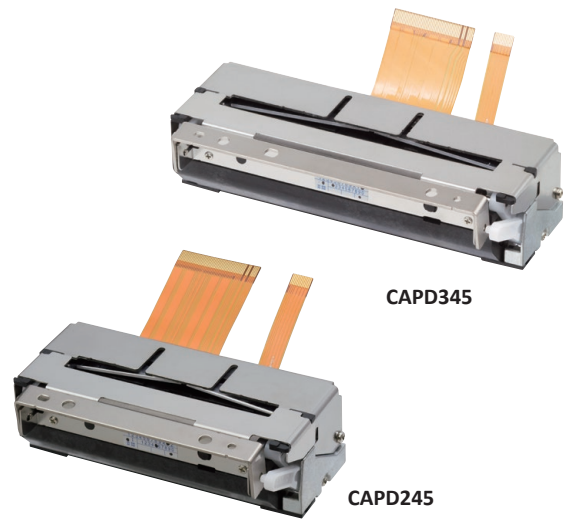
Other Models Line up

Thermal Printer Mechanism

# CAPD245/345



- Built-in auto-cutter
- Jam-free cutter design
- Max. printing speed (CAPD245) : 100mm/sec
- Platen latch function



Model		CAPD245	CAPD345
Printing	Method	Thermal line dot printing	
	Number of dots/line	384	576
	Resolution (dots/mm)	8	
	Paper width (mm)	58 <sup>+0</sup> <sub>-1</sub>	80 <sup>+0</sup> <sub>-1</sub>
	Printing width (mm)	48	72
	Speed (mm/sec) max	100	80
Detection	Paper path	Curved	
	Head temperature	By thermistor	
	Platen position	By mechanical switch	
	Out of paper	By photo interrupter	
Power supply (V)	Operation voltage (Vdd)	2.7 to 3.6 / 4.75 to 5.25	
	Operation voltage (Vp)	4.75 to 9.5	6.5 to 9.5
Peak current (A)	Head	3.66 (9.5V / 64dots) / 5.49 (9.5V / 96dots)	
	Cutter	0.7	
Auto cutter	Method	Slide type	
	Paper thickness (μm)	54 to 80 <sup>-1</sup>	
	Cutting type	Full cut / Partial cut (Leave center point)	
	Operating time (sec/cycle) max	Approx. 1.0	
	Cutting pitch (mm) min	10	
Service Life	Cut frequency (cut/min) max	30	
	Pulse activation (pulse)	100 million	
	Abrasion resistance (km)	50 <sup>-1</sup>	
Operating temperature (°C)	-10 to 50		
Dimensions (W×D×H mm)	83.1 × 35.4 × 26.9 <sup>*2</sup>	105.1 × 35.4 × 27.2 <sup>*2</sup>	
Mass (g)	Approx. 125	Approx. 148	

\*1 Use recommended thermal papers. \*2 Excluding mounting part.

## Interface / CPU <sup>\*3</sup>

	Model
USB interface board	IFD501-01UK
Serial interface board	IFD501-01SK
CPU	PTD50P01
Software <sup>*4</sup>	Printer driver, Linux®

<sup>\*3</sup> Interface boards and CPU are mutual options with LTPDX45 series. <sup>\*4</sup> Please see official homepage "www.sii-ps.com" for details.

- Low Voltage
- 24 Volt
- POS Printer
- Mobile Printer
- Standalone Printer Unit
- Panel-Mount Printer Unit
- Serial Printer
- Other Models Line up

Thermal Printer Mechanism

# LTP01 Series



- Max. printing speed: 75mm/sec
- Compact and light-weight
- Compatible model with LTPZ245 (Horizontal)



LTP01-245

Model	LTP01-245		
		without platen detecting switch	with platen detecting switch
Printing	Method	Thermal line dot printing	
	Number of dots/line	384	
	Resolution (dots/mm)	8	
	Paper width (mm)	58 <sup>*1</sup> <sub>-1</sub>	
	Printing width (mm)	48	
	Speed (mm/sec) max	75	
	Paper path	Curved	
Detection	Head temperature	By thermistor	
	Platen position	—	By mechanical switch
	Out of paper	By photo interrupter	
Power supply (V)	Operation voltage (V <sub>dd</sub> )	3.0 to 3.6 / 4.75 to 5.25	
	Operation voltage (V <sub>p</sub> )	4.75 to 9.5	
Peak current (A)	Head	3.76 (9.5V / 64 dots)	
	Motor	0.6	
Service Life	Pulse activation (pulse)	100 million	
	Abrasion resistance (km)	50 <sup>*1</sup>	
Operating temperature (°C)	0 to 50		
Dimensions (W×D×H mm)	69.8 × 32.7 × 15.3 <sup>*2</sup>		70.3 × 32.7 × 15.3 <sup>*2</sup>
Mass (g)	Approx. 44		

\*1 Use recommended thermal papers. \*2 Excluding protrusion.

Low Voltage

24 Volt

POS Printer

Mobile Printer

Standalone Printer Unit

Panel-Mount Printer Unit

Serial Printer

Other Models Line up



Thermal Printer Mechanism

# LTP02 Series



- Max. printing speed: 100mm/sec
- Extremely compact design for mobile terminal
- Light weight only 28g



LTP02-245

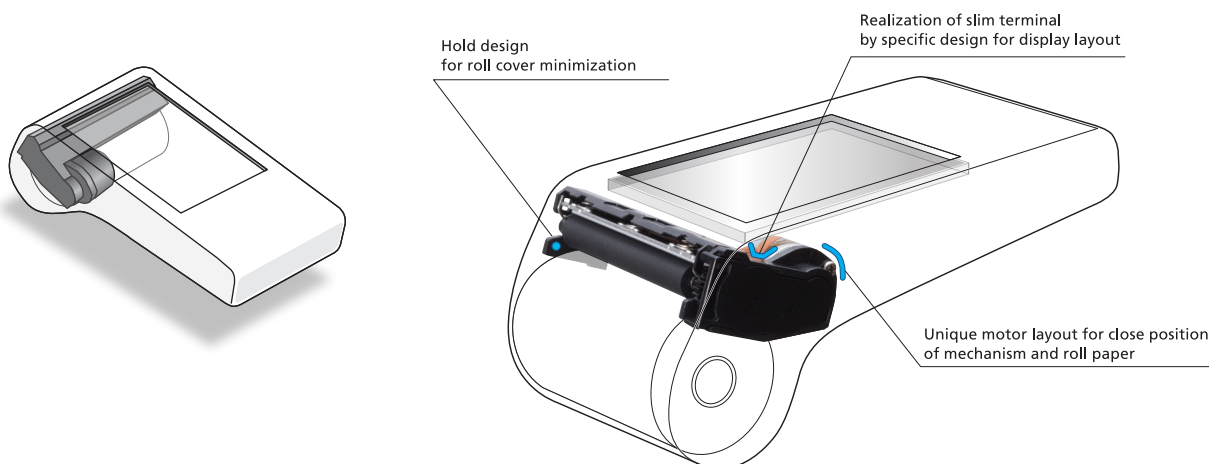
Model	LTP02-245			
	Standard model (LTP02-245-13)	High speed model (LTP02-245-A1)	Low energy model (LTP02-245-C1)	
Printing	Method	Thermal line dot printing		
	Number of dots/line	384		
	Resolution (dots/mm)	8		
	Paper width (mm)	58 <sup>±0</sup> <sub>1</sub>		
	Printing width (mm)	48		
	Speed (mm/sec) max	100	120 (9.0V) 165 (12.0V)	85
Detection	Paper path	Curved		
	Head temperature	By thermistor		
Power supply (V)	Out of paper	By photo interrupter		
	Operation voltage (V <sub>dd</sub> )	3.0 to 3.6		
Peak current (A)	Operation voltage (V <sub>p</sub> )	5.5 to 9.5	5.5 to 9.5, 10.8 to 12.6	3.0 to 4.2
	Head	2.64 (9.5V / 45 dots)	3.02 (12.6V / 48 dots)	5.99 (4.2V / 129 dots)
Service Life	Motor	0.6	0.6	1.0
	Pulse activation (pulse)	100 million	50 million	100 million
Operating temperature (°C)	Abrasion resistance (km)	50 <sup>±1</sup>		
		-10 to 50		
Dimensions (W×D×H mm)	67.3 × 18.1 × 30.0 <sup>±2</sup>			
Mass (g)	Approx. 28			

\*1 Use recommended thermal papers. \*2 Excluding protrusion.

## CPU

Model	PT02-55U	PT02-3U
Thermal printer	LTP02-245-13	LTP02-245-C1
Package form	48pin LQFP	
Operating voltage (V)	V <sub>p</sub> : 5.5 to 9.5, V <sub>cc</sub> : 3.0 to 3.6	V <sub>p</sub> : 3.0 to 4.2, V <sub>cc</sub> : 3.0 to 3.6
Input frequency (MHz)	16 +/- 0.01%	
Configuration	C-MOS LSI	
Communication interface	USB input / output (Device / Printer class / Full speed)	
Operating temperature (°C)	-10 to 50	
Storage temperature (°C)	-30 to 70	
Dimensions (W×D×H mm)	9.0 × 9.0 × 1.5	

Smart design to contribute reducing terminal size!



Thermal Printer Mechanism

# LTPJ245



EFT-POS



Portable Printer

- Max. printing speed: 75mm/sec
- Compact and light-weight
- Front open mechanism with latch function



LTPJ245

Model		LTPJ245
Printing	Method	Thermal line dot printing
	Number of dots/line	384
	Resolution (dots/mm)	8
	Paper width (mm)	58 <sup>+0</sup> <sub>-1</sub>
	Printing width (mm)	48
	Speed (mm/sec) max	75
	Paper path	Straight
Detection	Head temperature	By thermistor
	Out of paper	By photo interrupter
Power supply (V)	Operation voltage (V <sub>dd</sub> )	3.0 to 3.6
	Operation voltage (V <sub>p</sub> )	5.5 to 9.5
Peak current (A)	Head	2.49 (9.5V / 45dots)
	Motor	0.6
Service Life	Pulse activation (pulse)	100 million
	Abrasion resistance (km)	50 <sup>*1</sup>
Operating temperature (°C)		-10 to 50
Dimensions (W×D×H mm)		68.5 × 36.5 × 22.0 <sup>*2</sup>
Mass (g)		Approx. 38

\*1 Use recommended thermal papers. \*2 Excluding protrusion.

Low Voltage

24 Volt

POS Printer

Mobile Printer

Standalone Printer Unit

Panel-Mount Printer Unit

Serial Printer

Other Models Line up

## Thermal Printer Mechanism

# LTP04



POS/ECR



EFT-POS



Measuring Instrument



Portable Printer



Medical Equipment

- Max. printing speed: 250mm/sec
- Heavy-duty: 150km, 2mil. cuts
- Easy maintenance  
: Major parts are replaceable without tools



LTP04 / ACU04  
(Platen released)



LTP04 / ACU04

Model		LTP04-347
Printing	Method	Thermal line dot printing
	Number of dots/line	576
	Resolution (dots/mm)	8
	Paper width (mm)	80 <sup>+0</sup> <sub>-1</sub>
	Printing width (mm)	72
	Speed (mm/sec) max	250
Detection	Head temperature	By thermistor
	Platen position	By mechanical switch
	Out of paper	By photo sensor
Power supply (v)	Operation voltage (Vdd)	3.0 to 3.6
	Operation voltage (Vp)	21.6 to 26.4
Peak current (A)	Head	16.7 (26.4V / 384 dots)
	Motor	1.0
Service Life	Pulse activation (pulse)	150 million <sup>*1</sup>
	Abrasion resistance (km)	150 <sup>*1</sup>
Operating temperature (°c)		0 to 50
Dimensions (W × D × H mm)		127.6 × 83.0 × 44.1 (55.95 with auto cutter) <sup>*2</sup>
Mass (g)		Approx. 400

\*1 Use recommended thermal papers. \*2 Excluding protrusion

### Auto cutter

Model		ACU04-37
Thermal printer		LTP04-347
Cutting	Method	Slide type
	Paper width (mm)	80 <sup>+0</sup> <sub>-1</sub>
	Paper thickness (μm)	60 to 80 <sup>*3</sup>
	Cutting type	Partial cut (Leave center point)
	Operating time (sec/cycle) max	0.4 (24V)
	Cutting pitch (mm) min	10
	Cut frequency (cut/min) max	30
Operating voltage (v)	Motor	21.6 to 26.4
	Detector (control switch)	3.0 to 5.0
Starting current (A)		1.3
Life (Cut)		2,000,000 <sup>*4</sup>
Dimensions (W × D × H mm)		95.6 × 39.0 × 16.2
Mass (g)		Approx. 100

\*3 Use recommended thermal papers \*4 Depending upon specified conditions.

Low Voltage

24 Volt

POS Printer

Mobile Printer

Standalone Printer Unit

Panel-Mount Printer Unit

Serial Printer

Other Models Line up

## Thermal Printer Mechanism

## LTPD247/347



POS/ECR



Measuring Instrument



Barcode



Label



Medical Equipment

- High performance in compact design
- Max. printing speed: 200mm/sec
- Platen latch function
- Label printing \*Under specific conditions only.



LTPD347

LTPD247  
(Horizontal)

Model		LTPD247	LTPD347
Printing	Method	Thermal line dot printing	
	Number of dots/line	432	576
	Resolution (dots/mm)	8	
	Paper width (mm)	58 <sup>+0</sup> <sub>-1</sub>	80 <sup>+0</sup> <sub>-1</sub>
	Printing width (mm)	54	72
	Speed (mm/sec) max	200	
Detection	Paper path	Curved	
	Head temperature	By thermistor	
	Platen position	By mechanical switch	
	Out of paper	By photo interrupter	
Power supply (V)	Operation voltage (V <sub>dd</sub> )	2.7 to 3.6 / 4.75 to 5.25	
	Operation voltage (V <sub>p</sub> )	21.6 to 26.4	
Peak current (A)	Head	2.61 (26.4V / 144dots) / 5.23 (26.4V / 288dots)	
	Motor	0.44	0.52
Service Life	Pulse activation (pulse)	100 million	
	Abrasion resistance (km)	100 <sup>11</sup>	
Operating temperature (°C)		-10 to 50	
Dimensions (W×D×H mm)	Horizontal	71.0 × 30.0 × 15.0 <sup>12</sup>	91.0 × 30.0 × 15.0 <sup>12</sup>
	Vertical	71.0 × 15.0 × 30.0 <sup>12</sup>	91.0 × 15.0 × 30.0 <sup>12</sup>
Mass (g)		Approx. 56	Approx. 64

\*1 Use recommended thermal papers. \*2 Excluding protrusion.

## Interface

Model	IFD001-01UK	IFD001-01SK
CPU	PTD00P01	
Thermal printer	LTPD247, LTPD347, CAPD247, CAPD347	
Operating voltage (V)	V <sub>p</sub> : 21.6 to 26.4	
Character matrix (H×W dots)	16 dots characters: 16 × 8, 16 × 16	
	24 dots characters: 24 × 12, 24 × 24	
Character type	Extended graphics character set	Yes
	Katakana character set	Yes
	Codepage 1252	Yes
	Optional font	Yes
	Downloaded character	Yes
	User-defined character	Yes
JIS 1 & 2 level kanji	Yes	Yes
Communication interface	USB (2.0)	Serial (RS-232C)
Dimensions (W×D×H mm)	69.0 × 50.0 × 14.0	
Software <sup>4</sup>	Printer driver, OPOS, POS for .NET, Linux <sup>®</sup>	

\*4 Please see official homepage "www.sii-ps.com" for details.

## CPU

Model	PTD00P01
Thermal printer	LTPD247, LTPD347, CAPD247, CAPD347
Package form	120pin QFP
Operating voltage (V)	V <sub>p</sub> : 21.6 to 26.4, V <sub>cc</sub> : 3.0 to 3.6
Input frequency (MHz)	12 +/- 0.01%
Configuration	C-MOS LSI
Communication interface	Parallel, Serial, USB
Character type	Extended graphics character set, Codepage 1252 Other characters is available with CGs*5 or external ROM
Character matrix (H×W dots)	16 dots characters: 16 × 8, 16 × 16 24 dots characters: 24 × 12, 24 × 24
Dimensions (W×D×H mm)	16.0 × 16.0 × 1.7
Software <sup>6</sup>	Printer driver, OPOS, POS for .NET, Linux <sup>®</sup>

\*5 CG ROM: Japanese \*6 Please see official homepage "www.sii-ps.com" for details.

Low Voltage

24 Volt

POS Printer

Mobile Printer

Standalone Printer Unit

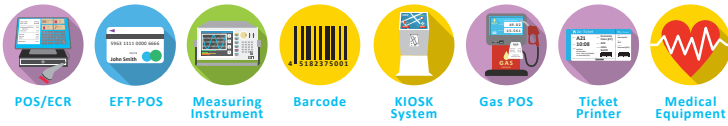
Panel-Mount Printer Unit

Serial Printer

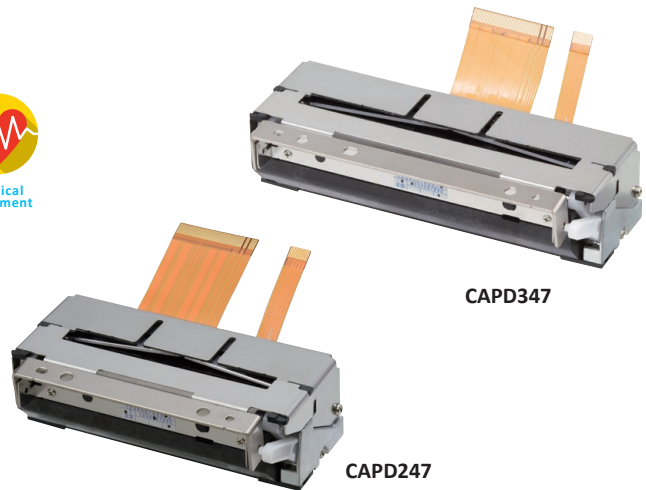
Other Models Line up

Thermal Printer Mechanism

# CAPD247/347



- Built-in auto-cutter
- Jam-free cutter design
- Max. printing speed: 200mm/sec
- Platen latch function



Model		CAPD247	CAPD347
Printing	Method	Thermal line dot printing	
	Number of dots/line	432	576
	Resolution (dots/mm)	8	
	Paper width (mm)	58 <sup>+0</sup> <sub>-1</sub>	80 <sup>+0</sup> <sub>-1</sub>
	Printing width (mm)	54	72
	Speed (mm/sec) max	200	
Detection	Paper path	Curved	
	Head temperature	By thermistor	
	Platen position	By mechanical switch	
	Out of paper	By photo interrupter	
Power supply (v)	Cutter home position	By photo interrupter	
	Operation voltage (Vdd)	2.7 to 3.6 / 4.75 to 5.25	
Peak current (A)	Operation voltage (Vp)	21.6 to 26.4	
	Head	2.61 (26.4V / 144dots) / 5.23 (26.4V / 288dots)	
	Motor	0.44	0.52
Auto cutter	Cutter	0.64	
	Method	Slide type	
	Paper thickness (μm)	54 to 91 <sup>-1</sup>	
	Cutting type	Full cut / Partial cut (Leave center point)	
	Operating time (sec/cycle) max	Approx. 0.5	
	Cutting pitch (mm) min	10	
Service Life	Cut frequency (cut/min) max	30	
	Pulse activation (pulse)	100 million	
	Abrasion resistance (km)	100 <sup>-1</sup>	
Operating temperature (°C)	-10 to 50		
Dimensions (W×D×H mm)	83.1 × 35.4 × 26.9 <sup>*2</sup>	105.1 × 35.4 × 27.2 <sup>*2</sup>	
Mass (g)	Approx. 131	Approx. 154	

\*1 Use recommended thermal papers. \*2 Excluding mounting part.

### Interface / CPU \*3

	Model
USB interface board	IFD001-01UK
Serial interface board	IFD001-01SK
CPU	PTD00P01
Software*4	Printer driver, OPOS, POS for .NET, Linux®

\*3 Interface boards and CPU are mutual options with LTPDX47 series.  
\*4 Please see official homepage "www.sii-ps.com" for details.

Low Voltage

24 Volt

POS Printer

Mobile Printer

Standalone Printer Unit

Panel-Mount Printer Unit

Serial Printer

Other Models Line up

## Thermal Printer Mechanism

## CAPM Series



POS/ECR



Measuring Instrument



Barcode



KIOSK System



Ticket Printer



Gaming

- Max. printing speed: 300mm/sec
- Build in auto paper cutter
- Head open design for easy paper operation
- Heavy-duty: 200km, 2mil. cuts
- Wide operating temperature: -20°C to 60°



CAPM347

Model	CAPM347			
	Easy paper operation model	Loading model		
		Regular thermal paper	Regular thermal paper	Thick thermal paper
Printing	Method	Thermal line dot printing		
	Number of dots/line	640		
	Resolution (dots/mm)	8		
	Paper width (mm)	58 <sup>+0</sup> <sub>-1</sub> / 60 <sup>+0</sup> <sub>-1</sub> / 80 <sup>+0</sup> <sub>-1</sub> / 83 <sup>+0</sup> <sub>-1</sub>		
	Printing width (mm)	54 / 56 / 72 / 80		
	Speed (mm/sec) max	300 <sup>*1</sup>	300 <sup>*1</sup>	280 <sup>*1</sup>
Detection	Head temperature	By thermistor		
	Head position	By mechanical switch		
	Out of paper	By photo interrupter		
	Mark position	By photo interrupter <sup>*1</sup>		
	Cutter home position	By photo interrupter		
Power supply (v)	Operation voltage (Vdd)	2.7 to 3.6 / 4.75 to 5.25		
	Operation voltage (Vp)	21.6 to 26.4		
Peak current (A)	Head / Motor / Cutter	5.6 (26.4V / 144dots) / 1.2 / 1.1		
Auto Cutter	Method	Slide type		
	Paper thickness (μm) <sup>*1</sup>	54 to 90 <sup>*2</sup>	54 to 90 <sup>*2</sup>	100 to 150 <sup>*2</sup>
	Cutting type	Full cut / Partial cut (Leave center point)		
Service Life	Pulse activation (pulse)	200 million	200 million	100 million
	Abrasion resistance (km)	200 <sup>*2</sup>	200 <sup>*2</sup>	100 <sup>*2</sup>
	Paper cutting (cut)	2,000,000 <sup>*2</sup>	2,000,000 <sup>*2</sup>	1,000,000 <sup>*2</sup>
	Operating temperature (°C)	-20 to 60 <sup>*1</sup>	-20 to 60 <sup>*1</sup>	-20 to 60 <sup>*1</sup>
Dimensions (W×D×H mm)	110.0 × 61.0 × 53.4		110.0 × 61.0 × 55.9	
Mass (g)	Approx. 500			

\*1 Under specified condition. \*2 Use recommended thermal papers.

## Interface

Model	IFM201-01UK
CPU	PTM20P01
Thermal printer	CAPM347
Operating voltage (v)	Vp: 21.6 to 26.4
Character matrix (H×W dots)	16 dots characters: 16 × 8, 16 × 16 24 dots characters: 24 × 12, 24 × 24
Character type	Extended graphics character set, Katakana character set, Codepage (437, 850, 852, 858 and 1252), JIS 1st and 2nd level Kanji, NEC special characters, NEC selection of IBM extensions, IBM extensions, Downloaded character, User-defined character, Optional font
Communication interface	USB (2.0)
Dimensions (W×D×H mm)	60.0 × 80.0 × 14.0
Software <sup>*3</sup>	Printer driver, OPOS, POS for .NET, Linux <sup>®</sup>

\*3 Please see official homepage "www.sii-ps.com" for details.

## CPU

Model	PTM20P01
Thermal printer	CAPM347
Package form	144pin QFP
Operating voltage (v)	Vp: 21.6 to 26.4, Vdd: 3.0 to 3.6
Input frequency (MHz)	12 +/- 0.01%
Configuration	C-MOS LSI
Communication interface	Parallel, Serial, USB
Character type	Extended graphics character set, Other characters is available with CGs <sup>*4</sup> or external ROM
Character matrix (H×W dots)	16 dots characters: 16 × 8, 16 × 16 24 dots characters: 24 × 12, 24 × 24
Dimensions (W×D×H mm)	22.0 × 22.0 × 1.7
Software <sup>*5</sup>	Printer driver, OPOS, POS for .NET, Linux <sup>®</sup>

\*4 CG ROM: Japanese \*5 Please see official homepage "www.sii-ps.com" for details.



Loading Model



Easy Paper Operation Model

Low Voltage

24 Volt

POS Printer

Mobile Printer

Standalone Printer Unit

Panel-Mount Printer Unit

Serial Printer

Other Models Line up

Thermal Printer Mechanism

# CAP9000 Series



Barcode



KIOSK System



Ticket Printer

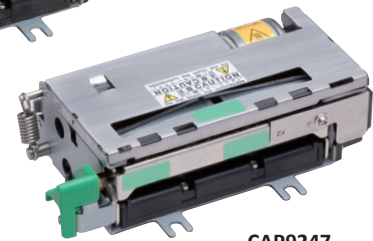


Gaming

- Max printing speed: 250mm/sec
- Compact 2", 3" heavy-duty mechanism
- Support thick paper: up to 155 $\mu$ m\*<sup>1</sup>  
(Straight path model only)
- Operation temperature: -20°C to 60°C



CAP9347



CAP9247

Model		CAP9247	CAP9347
Printing	Method	Thermal line dot printing	
	Number of dots/line	448	640
	Resolution (dots/mm)	8	
	Paper width (mm)	58 <sup>+0</sup> <sub>-1</sub> / 60 <sup>+0</sup> <sub>-1</sub>	80 <sup>+0</sup> <sub>-1</sub> / 82.55 <sup>+0</sup> <sub>-1</sub>
	Printing width (mm)	54 / 56	76 / 80
	Speed (mm/sec) max	250	
Detection	Paper path	Curved / Straight	
	Head temperature	By thermistor	
	Out of paper	By photo interrupter	
	Mark position	By photo interrupter	
	Platen position	By mechanical switch	
Power supply (V)	Operation voltage (Vdd)	4.75 to 5.25	
	Operation voltage (Vp)	21.6 to 26.4	
Peak current (A)	Head	5.9 (26.4V / 128 dots)	
	Motor	1.0	
	Cutter	1.2	
Auto cutter	Method	Slide type	
	Paper thickness ( $\mu$ m)	57 to 155* <sup>1</sup>	
	Cutting type	Full cut / Partial cut (Leave center point)	
	Operating time (sec/cycle) max	2	
	Cutting pitch (mm)min	10	
Service Life	Cut frequency (cut/min) max	30	
	Pulse activation (pulse)	150 million	
	Abrasion resistance (km)	150* <sup>1</sup>	
	Paper cutting (cut)	1,000,000* <sup>1</sup>	
Operating temperature (°C)		-20 to 60	
Dimensions (W×D×H mm)		89.5 × 50.0 × 30.0* <sup>2</sup>	112.0 × 50.0 × 30.0* <sup>2</sup>
Mass (g)		Approx. 131	Approx. 290

\*1 Use recommended thermal papers. \*2 Excluding protrusion.

Low Voltage

24 Volt

POS Printer

Mobile Printer

Standalone Printer Unit

Panel-Mount Printer Unit

Serial Printer

Other Models Line up

POS Printer

# RP-E10 Series



POS/ECR



Measuring Instrument



Barcode



KIOSK System



Medical Equipment



Gaming

RP-E10



- **RP-E10: Paper top-exit /**  
**RP-E11: Paper front-exit (IPX1)**
- **Compact cube: 129mm × 129mm × 129mm**
- **Max printing speed: 350mm/sec**
- **High Reliability: 150km, 2 million cuts**
- **Wide variety of driver and utility software suite**
- **Large LED indicator (Multi-color)**

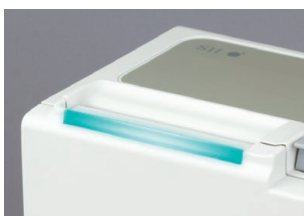
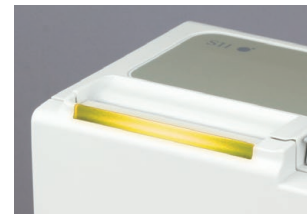
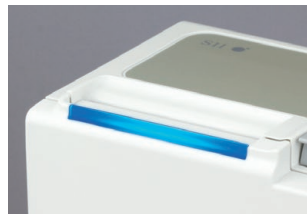
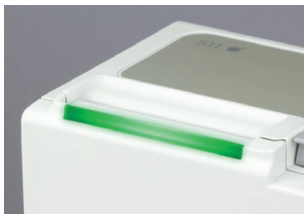
Model	RP-E10 (Receipt top-exit)	RP-E11 (Receipt front-exit)
Method	Thermal line dot printing	
Number of dots/line	576	
Resolution (dots/mm)	203 (8 dots / mm)	
Paper width (mm)	58 <sup>+0</sup> <sub>-1</sub> / 80 <sup>+0</sup> <sub>-1</sub>	
Printing width (mm)	54 / 72	
Speed (mm/sec) max	350	
Outside diameter of paper roll (mm) max	φ 83	
Inside diameter of paper roll (mm)	φ 12	
Character matrix (H×W dots)	24 × 12, 24 × 24, 16 × 8, 16 × 16	
Character dimensions (H×W mm)	3.0 × 1.5, 3.0 × 3.0, 2.0 × 1.0, 2.0 × 2.0	
Type of Paper	Roll paper, Timing mark roll paper (Built-in timing mark sensor)	
Character type	Code page: 14pages, Optional font, Downloaded character, User-defined character, JIS 1 & 2 level kanji, Special character	
Bar code	UPC-A/E, JAN (EAN) 8/13, ITF, CODABAR, CODE39, CODE93, CODE128, QR Code, PDF417, MaxiCode, Data Matrix	
Power supply (v)	Specified AC adapter, External power (DC24V +/- 5%)	
Communication interface	USB, Serial, Powered USB, Ethernet	
Input buffer	16k bytes	
Command	ESC/POS™ conformity, Markup Language	
Cutting	Methods	Slide type
	Cutting type	Full cut, Partial cut (Leave center point)
Operating temperature (°C)	5 to 45	
Service life (km)	Abrasion resistance (km)	150 <sup>*1</sup>
	Paper cutting (cut)	2,000,000 <sup>*1</sup>
Dimensions (W×D×H mm)	129.0 × 129.0 × 129.0 <sup>*2</sup>	
Mass (g)	Approx. 1300	
Standard	FCC, CE, VCCI, etc.	
Option	Wall mounting kit, Back plate	
Cash drawer	2 drivers (24V / 1A)	
Body color	2 colors: White / Black	
Software <sup>*3</sup>	Printer driver, OPOS, POS for .NET, Linux®, Android™ (SDK), iOS (SDK)	

\*1 Use recommended thermal papers. \*2 Excluding protrusion. \*3 Please see official homepage "www.sii-ps.com" for details.

## RP-E10 DISPLAY

### Stand-by mode

Selectable color options include green, blue, aqua, and off (for lower power consumption).



### Error status

Error notifications are displayed in yellow, purple, and red, using various flashing patterns. An optional buzzer sound is also available with variable settings to enhance error notifications.

Low Voltage

24 Volt

POS Printer

Mobile Printer

Standalone Printer Unit

Panel-Mount Printer Unit

Serial Printer

Other Models Line up



POS Printer

# RP-D10 Series



- Dual purpose: Paper top-exit and front-exit (IPx1)
- Compact cube: 129mm × 129mm × 129mm
- Max printing speed: 200mm/sec
- Energy saving: ENERGY STAR® compliant
- Paper saving: Receipt top space = 2mm (min.)
- Wide variety of driver and utility software suite



Model		RP-D10
Printing	Method	Thermal line dot printing
	Number of dots/line	576
	Resolution (dots/mm)	203 (8 dots / mm)
	Paper width (mm)	58 <sup>+0</sup> / 80 <sup>+0</sup> <sub>-1</sub>
	Printing width (mm)	54 / 72
	Speed (mm/sec) max	200
	Outside diameter of paper roll (mm) max	φ 83
	Inside diameter of paper roll (mm)	φ 12
	Character matrix (H×W dots)	24 × 12, 24 × 24, 16 × 8, 16 × 16
Character dimensions (H×W mm)	3.0 × 1.5, 3.0 × 3.0, 2.0 × 1.0, 2.0 × 2.0	
Type of Paper	Roll paper	
Character type	Code page: 14pages, Optional font, Downloaded character, User-defined character, JIS 1 & 2 level kanji, Special character	
Bar code	UPC-A/E, JAN (EAN) 8/13, ITF, CODABAR, CODE39, CODE93, CODE128, QR Code, PDF417, MaxiCode, Data Matrix	
Power supply (v)	Specified AC adapter, External power (DC24V +/- 5%)	
Communication interface	USB, Serial, Powered USB, Ethernet, Bluetooth®	
Input buffer	4k bytes	
Command	ESC/POS™ conformity, Markup Language	
Cutting	Methods	Slide type
	Cutting type	Full cut, Partial cut (Leave center point)
Operating temperature (°C)	5 to 45	
Service life (km)	Abrasion resistance (km)	100 <sup>*1</sup>
	Paper cutting (cut)	1,500,000 <sup>*2</sup>
Dimensions (W×D×H mm)	129.0 × 129.0 × 129.0 <sup>*3</sup>	
Mass (g)	Approx. 850	
Standard	FCC, CE, VCCI, etc.	
Option	Wall mounting kit, Back plate	
Cash drawer	2 drivers (24V / 1A)	
Body color	2 colors: White / Black	
Software <sup>*4</sup>	Printer driver, OPOS, POS for .NET, Linux®, Android™ (SDK), iOS (SDK)	

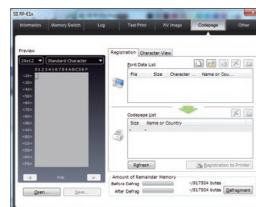
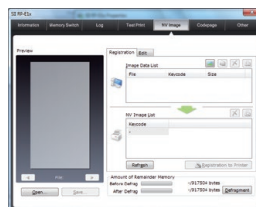
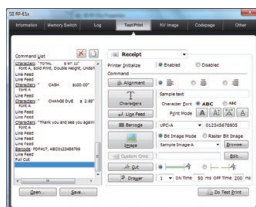
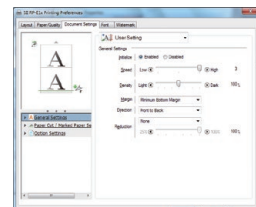
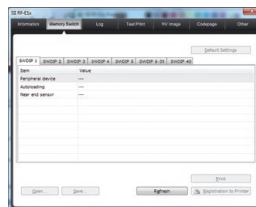
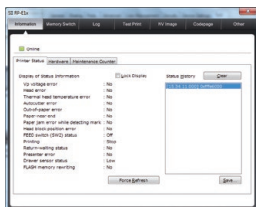
\*1 Use recommended thermal papers. \*2 Vary according to thermal paper. \*3 Excluding protrusion. \*4 Please see official homepage "www.sii-ps.com" for details.

## RP-E10 / RP-D10 SOFTWARE TOOLS

Convenient software tools available for assisting application development.

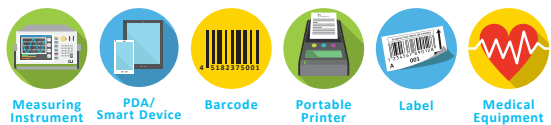
### Utility soft (Build on the Windows® driver)

Memory SW setting, LOG management, USB serial ID setting, NV image registration, Code page registration



Mobile Printer

# MP-A40 Series



MP-A40



## High Reliability

- Drop rating: 2.0m (6.6feet) multiple
- IP rating: IP54
- Operating temperature: -20°C to 50°C

## Wide variety of driver and SDK for mobile equipment

## Simple operation

## Stylish design

Made for

Model	MP-A40
Method	Thermal line dot printing
Number of dots/line	832
Resolution (dots/mm)	8
Paper width (mm)	80 <sup>*1</sup> / 100 <sup>*1</sup> / 105 <sup>*1</sup> / 112 <sup>*1</sup>
Printing width (mm)	104
Speed (mm/sec) max	105
Outside diameter of paper roll (mm) max	φ 58
Character matrix (H×W dots)	24 × 12, 24 × 24, 16 × 8, 16 × 16
Character dimensions (H×W mm)	3.0 × 1.5, 3.0 × 3.0, 2.0 × 1.0, 2.0 × 2.0
Type of Paper	Roll paper, Label roll paper
Character type	Code page : 17pages, Katakana character, Option font, Downloaded character, User-dened character, JIS 1 & 2 level kanji
Bar code	UPC-A/E, JAN(EAN)8/13, ITF, CODE39, CODABAR, CODE93, CODE128, PDF417, QR Code, MaxiCode, Data Matrix, GS1 Databar
Power supply (v)	Option : Specied AC adapter, Li-Ion battery
Communication interface	USB, Bluetooth®, WLAN <sup>*1</sup>
Input buffer	4K bytes
Command	ESC/POS™ conformity, CPCL conformity, Markup Language
Cutting	Tear bar
Drop rating	2.0m (6.6feet) multiple <sup>*2</sup>
IP rating	IP54 <sup>*2</sup>
Operating temperature (°C)	-20 to 50
Service life (km)	50 <sup>*3</sup>
Dimensions (W×D×H mm)	156 × 152 × 71 <sup>*4</sup>
Mass (g)	Approx. 760 <sup>*5</sup>
Standard	FCC, CE, VCCI
Option	AC adapter, Battery pack, Battery charger (single/quad), AC cable, USB cable, Serial cable, Car charger, Strap
Software <sup>*6</sup>	Printer driver, Windows® CE(SDK), Android™(SDK), iOS(SDK)

\*1 Selected model. \*2 test performance by specied condition. \*3 Use recommended thermal papers. \*4 Excluding protrusion \*5 Including battery, excluding roll paper \*6 Please see official homepage "www.sii-ps.com" for details.

Low Voltage

24 Volt

POS Printer

Mobile Printer

Standalone Printer Unit

Panel-Mount Printer Unit

Serial Printer

Other Models Line up

Mobile Printer

# MP-B20



- Compact & Light Weight
- Max printing speed: 80mm/sec
- Simple Operation & Stylish Design
- Charging battery by USB (No AC adapter required)
- Cradle option



MP-B20



Model		MP-B20
Printing	Method	Thermal line dot printing
	Number of dots/line	384
	Resolution (dots/mm)	8
	Paper width (mm)	58 <sup>+0</sup> <sub>-1</sub>
	Printing width (mm)	48
	Speed (mm/sec) max	80
	Outside diameter of paper roll (mm) max	φ 48
	Character matrix (H×W dots)	24 × 12, 24 × 24, 16 × 8, 16 × 16
	Character dimensions (H×W mm)	3.0 × 1.5, 3.0 × 3.0, 2.0 × 1.0, 2.0 × 2.0
Type of Paper	Roll paper	
Character type	Code page(17pages), Optional font, Downloaded character, User-defined character, JIS 1&2 Level Kanji, Special character	
Bar code	UPC-A/E, JAN(EAN)8/13, ITF, CODE39, CODABAR, CODE93, CODE128 PDF417, QR Code, MaxiCode, Data Matrix, GS1 Databar	
Power supply (v)	Li-Ion battery	
Communication interface	USB,Bluetooth®	
Input buffer	4K bytes	
Command	ESC/POS™ conformity	
Cutting	Tear bar	
Falling resistance	1.5m <sup>-1</sup>	
Operating temperature (°c)	-10 to 50	
Service life (km)	50 <sup>±2</sup>	
Dimensions (W×D×H mm)	79.0 × 110.0 × 44.0 <sup>±3</sup>	
Mass (g)	Approx. 180 <sup>±4</sup>	
Standard	FCC, CE, VCCI	
Bundled item	USB cable, Battery, Belt clip	
Option	Cradle for charging	
Software <sup>5</sup>	Printer driver, Windows®, Android™(SDK), iOS(SDK)	

\*1 This number is test result based on SII procedures, not guaranteed value. \*2 using specified thermal paper \*3 Excluding protrusion \*4 with battery, without paper roll \*5 Please see official homepage "www.sii-ps.com" for details.



Cradle option

Low Voltage

24 Volt

POS Printer

Mobile Printer

Standalone Printer Unit

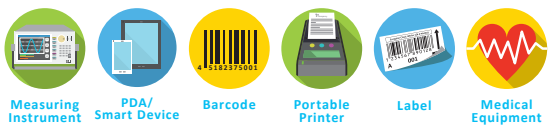
Panel-Mount Printer Unit

Serial Printer

Other Models Line up

Mobile Printer

# DPU-S Series



- Max printing speed: 100mm/sec (DPU-S245)  
90mm/sec (DPU-S445)
- Interface: Bluetooth®, USB, Serial
- Compact and light-weight
- Easy paper operation
- Wide variety of driver and utility software suite

DPU-S445



DPU-S245



Model	DPU-S245	DPU-S445
Method	Thermal line dot printing	
Number of dots/line	384	832
Resolution (dots/mm)	8	
Paper width (mm)	58 <sup>+0</sup> <sub>-1</sub>	112 <sup>+0</sup> <sub>-1</sub>
Printing width (mm)	48	104
Speed (mm/sec) max	100	90
Outside diameter of paper roll (mm) max	φ 38	φ 50
Character matrix (H×W dots)	24 × 12, 24 × 24, 16 × 8, 16 × 16	
Character dimensions (H×W mm)	3.0 × 1.5, 3.0 × 3.0, 2.0 × 1.0, 2.0 × 2.0	
Number of columns	24, 12, 32, 16	52, 26, 69, 34
Type of Paper	Roll paper, Label roll paper	Roll paper, Label roll paper, Cut sheet paper
Character type	Extended graphics character set, Katakana character set, CP1252, Optional font, Downloaded character, User-defined character, JIS 1 & 2 level kanji	
Bar code	UPC-A/E, JAN (EAN) 8/13, ITF, CODE39, CODABAR, CODE128, PDF417, QR Code, MaxiCode, Data Matrix	
Power supply (V)	Li-Ion battery, Specified AC adapter	
Communication interface	Bluetooth® <sup>*1</sup> , USB, Serial	
Input buffer	4K bytes	
Command	ESC/P™ conformity	
Cutting	Tear bar	
Operating temperature (°C)	-10 to 50	0 to 50
Service life (km)	50 <sup>*2</sup>	
Dimensions (W×D×H mm)	83 × 130 × 45 <sup>*3</sup>	145.0 × 135.0 × 58.0 <sup>*3</sup>
Mass (g)	Approx. 280 <sup>*4</sup>	Approx. 490 <sup>*4</sup>
Standard	FCC, CE, VCCI, CCC <sup>*5</sup>	
Option	AC adapter, Battery pack, Battery charger, AC cable, USB cable, Serial cable, Carrying case	
Software <sup>*6</sup>	Printer driver, Windows® CE (SDK), Android™ (SDK), iOS (SDK)	

\*1 Only Bluetooth® model. \*2 Use recommended thermal papers. \*3 Excluding protrusion. \*4 Including battery, excluding roll paper. \*5 DPU-S445-00B-E model only. \*6 Please see official homepage "www.sii-ps.com" for details.

## Serial interface specification

Item	Specification
Baud rate	1200, 2400, 4800, 9600, 19200, 38400, 57600, 115200 bps
Data bit	7bits, 8bits
Parity bit	Odd, Even, or None
Stop bit	1bit, 2bits
Control method	H/W BUSY, Xon/Xoff

## USB interface specification

USB printer-class 2.0 conformity

## Bluetooth® interface specification

Based on Bluetooth® Ver. 2.1 + EDR

## Easy paper operation



DPU-S245

DPU-S445

## Cut sheet paper



DPU-S445

Low Voltage

24 Volt

POS Printer

Mobile Printer

Standalone Printer Unit

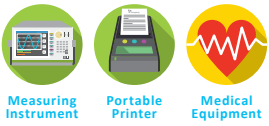
Panel-Mount Printer Unit

Serial Printer

Other Models Line up

Standalone Printer Unit

# DPU-414



- Max printing speed: 52.5 character/sec
- Available international character
- Interface: Serial and parallel



DPU-414

Model		DPU-414-50B
Printing	Method	Thermal serial dot printing
	Number of dots/line (H×W)	9 × 320
	Paper width (mm)	112 <sup>*1</sup>
	Printing width (mm)	89.6
	Speed (character/sec) max	52.5
	Character matrix (H×W dots)	9 × 7
	Character size (H×W mm)	2.5 × 1.9, 2.5 × 0.9 (Condensed)
	Number of columns	40, 80 (Condensed)
Character type	Extended graphics character set, Alphanumeric, International characters, Katakana character set	
Power supply (V)	Option: Specified AC adapter, Ni-MH battery	
Battery	Without (option)	
Communication interface	Parallel (36pins Amphenol), Serial (9pins D-SUB)	
Input buffer	28K bytes	
Command	ESC/P™ conformity	
Cutting	Tear bar	
Operating temperature (°C)	0 to 40	
Service life (line)	500,000 <sup>*1</sup>	
Dimensions (W×D×H mm)	160.0 × 170.0 × 66.5 (printer unit only) <sup>*2</sup>	
Mass (g)	Approx. 580 (without Battery)	
Standard	FCC, CE, VCCI, CCC	
Option	AC adapter, Battery	

\*1 Use recommended thermal papers. \*2 Excluding protrusion.

## Serial interface specification

Item	Specification
Baud rate	75, 110, 150, 300, 600, 1200, 2400, 4800, 9600, 19200bps
Data bit	7bits, 8bits
Parity bit	Odd, Even, or None
Stop bit	1bit
Control method	H/W BUSY, Xon/Xoff

## Parallel interface specification

Item	Specification
Synchronization	Synchronized with STROBE signal
Handshaking	Synchronized with ACK and BUSY signal
Signal level	TTL level

Low Voltage

24 Volt

POS Printer

Mobile Printer

Standalone Printer Unit

Panel-Mount Printer Unit

Serial Printer

Other Models Line up

Panel-Mount Printer Unit

# DPU-D Series



Measuring Instrument



Barcode



Medical Equipment

- Max printing speed: 100mm/sec (DPU-D2)  
80mm/sec (DPU-D3)
- Small and compact design
- Panel-mount type
- Easy paper operation



DPU-D2



DPU-D3

Model		DPU-D2-00A	DPU-D3-00A
Printing	Method	Thermal line dot printing	
	Number of dots/line	384	576
	Resolution (dots/mm)	8	
	Paper width (mm)	58 <sup>+0</sup> <sub>-1</sub>	80 <sup>+0</sup> <sub>-1</sub>
	Printing width (mm)	48	72
	Speed (mm/sec) max	100 (8.5V)	80 (8.5V)
	Character matrix (H×W dots)	24 × 24, 24 × 12, 16 × 16, 16 × 8	
	Character size (H×W mm)	3.0 × 3.0, 3.0 × 1.5, 2.0 × 2.0, 2.0 × 1.0	
	Number of columns	16, 32, 24, 48	24, 48, 36, 72
Character type		Extended graphics character, Katakana character set, CP1252, Optional font, Downloaded character, User-defined character, JIS 1 & 2 level kanji	
Bar code		UPC-A/E, JAN (EAN) 8/13, ITF, CODE39, CODABAR, CODE93, CODE128, PDF417, QR Code, MaxiCode, Data Matrix	
Power supply (V)		Driving voltage (5.0 to 9.0)	
Communication interface		Serial / USB	
Input buffer		4,096 bytes	
Command		ESC/POS™ conformity	
Cutting		Tear bar	
Operating Temperature (°C)		-10 to 50	
Service life (km)		50 <sup>*1</sup>	
Dimensions (W×D×H mm)		80.0 × 68.8 × 85.5 <sup>*2</sup>	102.0 × 68.8 × 85.5 <sup>*2</sup>
Mass (g)		Approx. 180	Approx. 210
Software <sup>*3</sup>		Printer Driver	

\*1 Use recommended thermal papers. \*2 Excluding protrusion. \*3 Please see official homepage "www.sii-ps.com" for details.

## Serial interface specification

Item	Specification
Baud rate <sup>*3</sup>	9600, 19200, 38400, 115200
Data bit	8 bits
Parity bit <sup>*3</sup>	Odd, Even or None
Stop bit	1 bit
Control method <sup>*3</sup>	BUSY, Xon/Xoff

\*3 Select by utility software.

## USB interface specification

USB printer-class 2.0 conformity

Low Voltage

24 Volt

POS Printer

Mobile Printer

Standalone Printer Unit

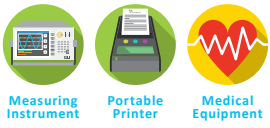
Panel-Mount Printer Unit

Serial Printer

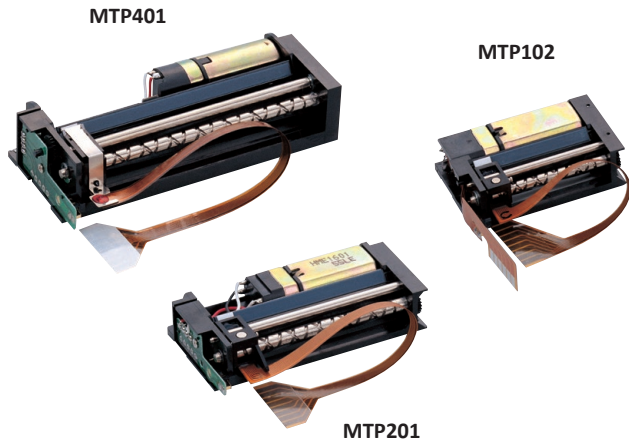
Other Models Line up

Serial Printer

# MTP Series



- Extremely compact and light-weight
- High reliability
- Shuttle head type



Model	MTP102-16B	MTP201-20B	MTP201-24B	MTP401-40B	MTP201-G166	
Printing	Type	Character			Graphic	
	Method	Thermal serial dot printing				
	Paper width (mm)	38 <sup>+0</sup> <sub>-1</sub>	58 <sup>+0</sup> <sub>-1</sub>		80 <sup>+0</sup> <sub>-1</sub>	58 <sup>+0</sup> <sub>-1</sub>
	Printing width (mm)	26.4	45.9	46	66.7	46
	Speed (line/sec) max	1.2	1.0	0.9	0.5	0.9
	Paper path	Curved				
	Character matrix (H×W dots)	7 × 5				
	Character size (H×W mm)	2.4 × 1.2	2.4 × 1.6	2.4 × 1.4	2.4 × 1.2	2.4 × 1.4
	Number of columns	16	20	24	40	24
	Direction	Left to right				
	Timing	Synchronized with the tachogenerator				
	Line spacing (mm)	3.8			2.8	
	Character spacing (dot)	2			0	
Detection	Mechanical switch					
Power supply (V)	4.0 to 6.0					
Peak current (A)	3.2 (5V on)					
Service life (Lines)	500,000 <sup>*1</sup>					
Operating temperature (°C)	0 to 50					
Dimensions (W×D×H mm)	48.0 × 31.0 × 13.8 <sup>*2</sup>	70.0 × 34.0 × 14.4 <sup>*2</sup>		91.5 × 35.5 × 20.0 <sup>*2</sup>	70.0 × 34.0 × 14.4 <sup>*2</sup>	
Mass (g)	Approx. 35	Approx. 40		Approx. 50	Approx. 40	

\*1 Use recommended thermal papers. \*2 Excluding protrusion.

Low Voltage

24 Volt

POS Printer

Mobile Printer

Standalone Printer Unit

Panel-Mount Printer Unit

Serial Printer

Other Models Line up

Thermal Printer Mechanism

## LTPU245 Low Voltage



- Max. printing speed: 75mm/sec
- Extremely compact design
- Light weight only 30g
- Platen latch function



LTPU245

Low Voltage

24 Volt

POS Printer

Mobile Printer

Standalone Printer Unit

Panel-Mount Printer Unit

Serial Printer

Other Models Line up

Thermal Printer Mechanism

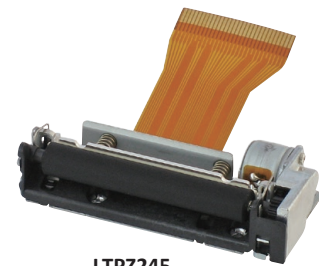
## LTPZ Series Low Voltage



- Max. printing speed: 75mm/sec
- Compact and light-weight
- Operating temperature: -20°C to 50°C



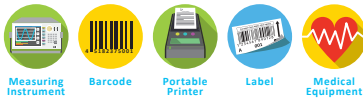
LTPZ245  
(Vertical)



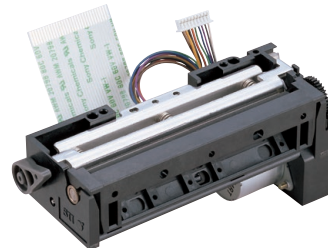
LTPZ245  
(Horizontal)

Thermal Printer Mechanism

## LTPV Series Low Voltage



- Max printing speed: 85mm/sec
- Platen latch function
- Label printing
- Support thick paper: up to 135µm



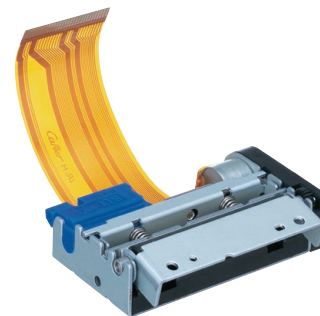
LTPV345

Thermal Printer Mechanism

## LTPC Series Low Voltage



- Max printing speed: 65mm/sec
- Easy paper operation
- Lineup of head resolution: 6 dots/mm and 8 dots/mm



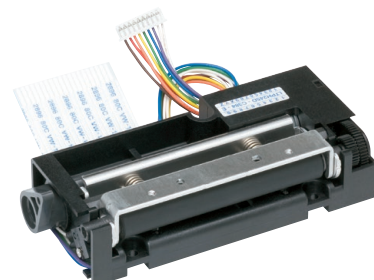
LTPC245

Thermal Printer Mechanism

## LTPH245 Low Voltage



- Max printing speed: 62.5mm/sec
- Easy paper operation
- Platen latch function
- Operating temperature: -30°C to 70°C

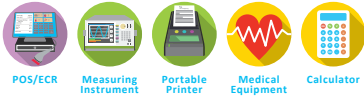


LTPH245

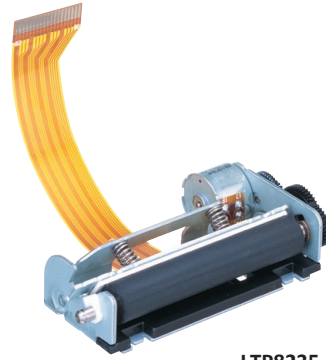


Thermal Printer Mechanism

## LTP8235 Low Voltage



- Max printing speed: 60mm/sec
- Compact and light-weight
- Resolution: 6 dots/mm
- Loading type



LTP8235

Thermal Printer Mechanism

## LTP1245 Low Voltage



- Max printing speed: 62.5mm/sec
- Compact and light-weight
- Paper feed knob model available
- Straight and curved path models available
- Operating temperature: -30°C to 70°C



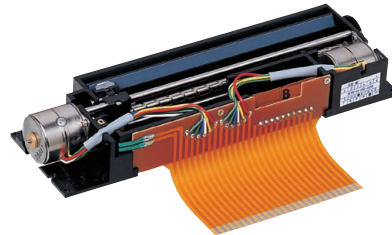
LTP1245

Thermal Printer Mechanism

## STP411 Low Voltage



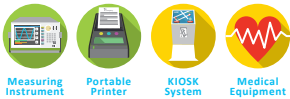
- Compact and light-weight
- High-quality and high reliability
- Individual motors for moving head and feeding paper.
- Quiet printing by stepping motor.



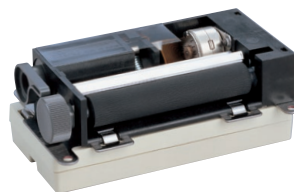
STP411-320

Sub-assembled printer Unit

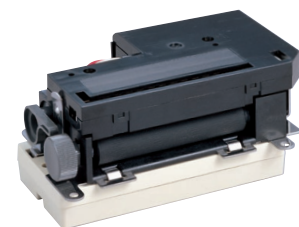
## SAM-1245 Low Voltage



- Max printing speed: 60mm/sec
- Compact and light-weight
- Available built-in auto cutter model



SAM-1245



SAM-1245  
(with autocutter model)

Low Voltage

24 Volt

POS Printer

Mobile Printer

Standalone Printer Unit

Panel-Mount Printer Unit

Serial Printer

Other Models Line up

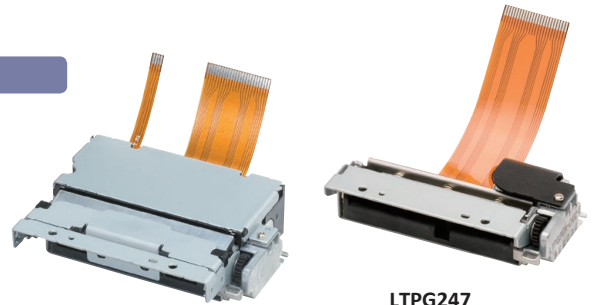
Thermal Printer Mechanism

## CAPG247/ LTPG247

24V



- Max printing speed: 150mm/sec
- Platen latch function
- Windows® driver



CAPG247  
(with autocutter model)

LTPG247

Thermal Printer Mechanism

## LTP2000 Series

24V



- Max printing speed (LTP2242) : 90mm/sec
- Straight and curved path models available
- Label printing
- Support thick paper: up to 135µm (Straight path model only)



LTP2242

LTP2342

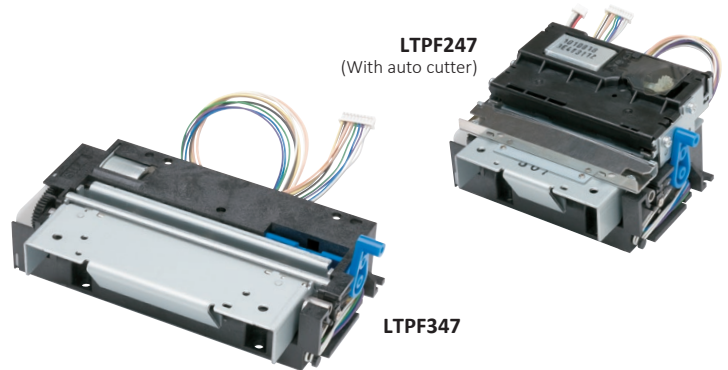
Thermal Printer Mechanism

## LTPF Series

24V



- Max printing speed: 220mm/sec
- Platen latch function
- Auto cutter option (Slide type) available



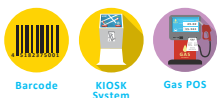
LTPF247  
(With auto cutter)

LTPF347

Sub-assembled Printer Unit

## APU-G247

24V



- Max. printing speed: 150mm/sec
- Roll paper capacity: up to φ83mm
- Easy paper operation
- Interface: Serial or USB model



APU-G247

Low Voltage

24 Volt

POS Printer

Mobile Printer

Standalone Printer Unit

Panel-Mount Printer Unit

Serial Printer

Other Models Line up

# Recommended thermal paper

Seiko Instruments Inc. recommends the following paper to best print.

Printer	Thermal paper	Specification					
		Paper width (mm)	External diameter (mm)	Internal diameter (mm)	Length (m)	Roll/Box	Core
CAPD245, LTPD245, LTPU245, LTPJ245 LTPA245, LTPC245, CAPC245, LTPH245	TP-322L	58	30	9	(9)	10	
CAPD345, LTPD345, LTPV345	TP-V341L	80	48	9	(28)	10	
LTPV445	TP-341L-1	112	48	9	(28)	10	
CAPD247, LTPD247, LTP01,LTP02, LTPG247, LTPF247	TP-211C-1	58	48	12	(25)	10	✓
LTP04, CAPD347, LTPD347, LTPF347	TP-312C-1	80	48	12	(25)	10	✓
LTP2242	TP-521C	60	48	12	(25)	10	✓
	TP-252C-1	60	50	12	(28)	10	✓
LTP2342	TP-312C-1	80	48	12	(25)	10	✓
LTP2442	TP-451C-1	112	48	12	(25)	10	✓
DPU-S245	TP-S245L-1	58	38	9	(19)	10	
DPU-S445	TP-341L-1	112	48	9	(28)	10	
RP-B10, RP-E10, RP-D10	TP-E23C-1	58	80	12	(65)	10	✓
	TP-B10CH	80	80	12	(65)	10	✓
DPU-3445	TP-341L-1	112	48	9	(28)	10	
	TP-343L-3 (High proof paper)	112	48	9	(28)	10	
DPU-D2	TP-211C-1	58	48	12	(25)	10	✓
DPU-D3	TP-312C-1	80	48	12	(25)	10	✓
DPU-12	TP-201C-1	58	38	9	(18)	10	✓
DPU-30	TP-211C-1	58	48	12	(25)	10	✓
DPU-411, DPU-412, DPU-414	TP-411L-3	112	48	9	(28)	10	
	TP-411L-4	112	48	9	(28)	10	
DPU-H245	TP-H241L	58	25	9	(7)	10	
DPU-E247	TP-E23C-1	58	80	12	(65)	10	✓
APU-G247	TP-E23C-1	58	80	12	(65)	10	✓
APU-F247	TP-E23C-1	58	80	12	(65)	10	✓
SAM-1245	TP-322L	58	30	9	(9)	10	
MTP102	TP-102C-4	38	28	11.2	(8)	10	✓
MTP201	TP-251L	58	48	9	(28)	10	
	TP-202L-4	58	25	9	(7)	10	
MTP401	TP-312C-1	80	48	12	(25)	10	✓
	TP-401L-4	80	40	9	(20)	10	
STP211	TP-211C-1	58	48	12	(25)	10	✓
	TP-211C-3	58	48	12	(25)	10	✓
STP312	TP-312C-1	80	48	12	(25)	10	✓
	TP-312C-3	80	48	12	(25)	10	✓
STP411	TP-451C-1	112	48	12	(25)	10	✓
	TP-451C-3	112	48	12	(25)	10	✓

Low Voltage

24 Volt

POS Printer

Mobile Printer

Standalone Printer Unit

Panel-Mount Printer Unit

Serial Printer

Other Models Line up

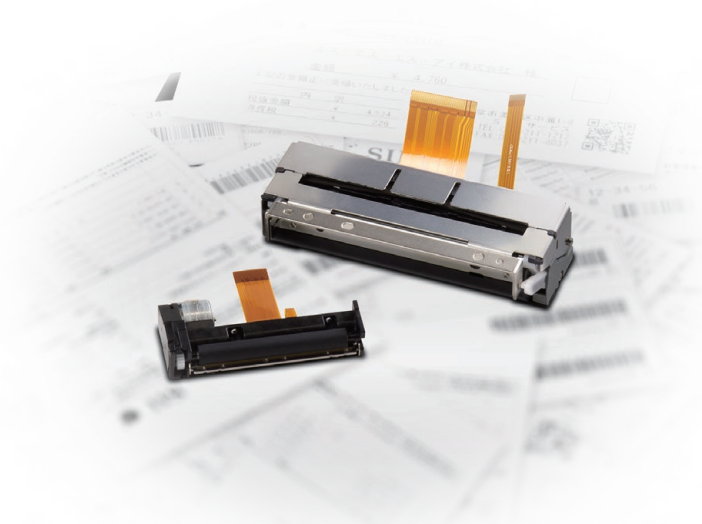


# Anytime, Anywhere!!

SII Thermal Printer

## Thermal Printer

Product Catalog 2018-2019



<http://www.sii-ps.com>



### SAFETY PRECAUTIONS

1. This catalog provides a summary of product specifications. Before using each product, please thoroughly read the technical manual, user's manual, and other manuals which have been prepared by us.
2. The products listed in this catalog are not allowed to be used as part of any life-support system or any other equipment or system which requires extremely high reliability, without our permission in writing.
3. When using each product, thoroughly understand the specifications of the product, observe the descriptions and markings for prevention and avoidance of danger, on your products and in the documents such as the manual, and advise and guide your customers (users).

### GENERAL NOTES

1. Because of our continuous research for improvements, the contents in this catalog may be changed without prior notice.
2. Since the photo of each product is printed, the color of the photo may be different from that of the real product. Before use, please check the actual color of the product.
3. Concerning the use of information, drawings, etc. in this catalog, we shall not guarantee the industrial property, intellectual property, and other rights of a third party or grant their licenses. Accordingly, we will not assume responsibility for violation of the third party's rights attributable to such use.
4. No part of this catalog may be reprinted, reproduced or used for other purposes without our written permission.
5. Warranty is limited to the product unit delivered. We will be exempted from responsibility for any damage which may be caused by any defect of this product.

- ⚠ iPad, iPhone, iPod are trademarks of Apple Inc., registered in the U.S. and other countries.
- ⚠ iOS is a trademark or registered trademark of Cisco in the U.S. and other countries and is used under license.
- ⚠ ESC/POS™ and ESC/P™ are registered trademarks of SEIKO EPSON Corporation.
- ⚠ Windows™ and Windows Mobile™ are the registered trademarks of Microsoft Corporation (USA).
- ⚠ Android™ is a trademark of Google Inc.
- ⚠ Linux® is a registered trademark of Linus Torvalds in the United States and / or other countries.
- ⚠ Company and product names are trademarks or registered trademarks of their respective companies.
- ⚠ We have completed making all of our printers compliant with the RoHS directive.

Printed in Feb.2018



**Seiko Instruments Inc.**

Print System Div.

8, Nakase 1-chome, Mihama-ku  
Chiba-shi, Chiba 261-8507, Japan

Telephone:+81-43-211-1106 Facsimile:+81-43-211-8037

**Seiko Instruments U.S.A., Inc.**

21221 S. Western Ave., Suite 250, Torrance, CA 90501, USA.  
Telephone:+1-310-517-7778 Facsimile:+1-310-517-7779

**Seiko Instruments GmbH**

Siemensstrasse 9 D-63263 Neu-Isenburg, Germany  
Telephone:+49-6102-297-0 Facsimile:+49-6102-297-222  
E-mail : [info@seiko-instruments.de](mailto:info@seiko-instruments.de)

**Official site** <http://www.sii-ps.com>

**Seiko Instruments (H.K.) Ltd.**

4-5 / F, Wylar Center 2, 200 Tai Lin Pai Road, Kwai Chung,  
N.T., Kowloon, Hong Kong  
Telephone:+852-2494-5160 Facsimile:+852-2424-0901

**Seiko Instruments Taiwan Inc.**

12F, No.101, Sec.2, Nanking E.Rd.,  
Taipei 104, Taiwan, R.O.C.  
Telephone:+886-2-2563-5001 Facsimile:+886-2-2563-5580

## X-ON Electronics

Largest Supplier of Electrical and Electronic Components

*Click to view similar products for [Printers category](#):*

*Click to view products by [Seiko manufacturer](#):*

Other Similar products are found below :

[897252-000](#) [CU0620-000](#) [F39639-000](#) [FTP-648MCL570](#) [PTMBL1912A](#) [PWC-L07A1-W1-E](#) [DPU-V445-10B-E](#) [D-SCE-12-50-S1-4](#) [D-SCE-3.2-50-S1-4](#) [IF2302-01UK-E](#) [IF9001-01P-E](#) [IFC-001K](#) [2000P-RIBBON-4AG-MED](#) [206868-000](#) [OP-LH200A-E](#) [LB1256-E](#) [LM-1/4-TUBE-WE](#) [308-LE](#) [SMS-V-19-9](#) [ACUH205A-E](#) [1813390001](#) [FTP-040P001](#) [FTP-628CU601R](#) [PW-C0725-W2-U](#) [HANDHELD-TMS-3.9-9](#) [3045950001](#) [351013-000](#) [RH-48-00-E](#) [4775630001](#) [TSK-508406-2.5CS8982](#) [TTC-PRINTER-PRINthead-300](#) [HW-762254-5-9](#) [IF2301-01B](#) [IFC-001K-E](#) [IFH001-01B](#) [LM-1/2-TUBE-WE](#) [DPU-D3-01A-E](#) [D-SCE-12-50-9](#) [D-SCE-4.8-50-4](#) [094514-000](#) [E64127-000](#) [ED4839-000](#) [T200-IDENT-DR4-DRIVEROLLER](#) [CP3963-000](#) [2000P-RIBBON-4AG-NAR](#) [2000P-RIBBON-WH-MED](#) [U001023895X1](#) [FTP-624Y002](#) [ED4098-000](#) [NC-LSC05](#)