



**LTPH245
LINE THERMAL PRINTER MECHANISM
TECHNICAL REFERENCE**

U00055332011

LTPH245 LINE THERMAL PRINTER MECHANISM TECHNICAL REFERENCE

Document Number U00055332011

| | |
|------------------|---------------|
| First Edition | December 1999 |
| Second Edition | May 2000 |
| Third Edition | December 2000 |
| Fourth Edition | March 2001 |
| Fifth Edition | August 2001 |
| Sixth Edition | December 2001 |
| Seventh Edition | March 2003 |
| Eighth Edition | March 2005 |
| Ninth Edition | July 2006 |
| Tenth Edition | April 2007 |
| Eleventh Edition | October 2009 |
| Twelfth Edition | May 2012 |

Copyright © 1999-2012 by Seiko Instruments Inc.
All rights reserved.

Seiko Instruments Inc. (hereinafter referred to as "SII") has prepared this technical reference for use by SII personnel, licensees, and customers. The information contained herein is the property of SII and shall not be reproduced in whole or in part without the prior written approval of SII.

SII reserves the right to make changes without notice to the specifications and materials contained herein and shall not be responsible for any damages (including consequential) caused by reliance on the materials presented, including but not limited to typographical, arithmetic, or listing errors.

SII ● is a trademark of Seiko Instruments Inc.

PREFACE

This technical reference describes the specifications and basic operating procedures for the LTPH series thermal printer mechanism (hereinafter referred to as “printer”).

The LTPH245 series (RoHS compliance) has the following models.

- LTPH245D-C384-E
- LTPH245E-C384-E

This technical reference usually describes information common to any printer unless otherwise specified. If the information is different depending on the model, specific model name is mentioned clearly.

Chapter 1 “Precautions” describes safety, design, and handling precautions. Read it thoroughly before designing so that you are able to use the product properly.

SII has not investigated the intellectual property rights of the sample circuits included in this technical reference. Fully investigate the intellectual property rights of these circuits before using. In particular, SII reserves the industrial property rights for the Heat Storage Simulation described in Chapter 3. Using it for the other printer is infringement on the industrial property rights.

TABLE OF CONTENTS

| Section | | Page |
|---------------------------------|---|------|
| CHAPTER 1 PRECAUTIONS | | |
| 1.1 | SAFETY PRECAUTIONS | 1-1 |
| 1.2 | DESIGN AND HANDLING PRECAUTIONS | 1-2 |
| 1.2.1 | Design Precautions | 1-2 |
| 1.2.2 | Handling Precautions | 1-4 |
| 1.2.3 | Precautions on Discarding | 1-4 |
| CHAPTER 2 FEATURES | | |
| CHAPTER 3 SPECIFICATIONS | | |
| 3.1 | GENERAL SPECIFICATIONS | 3-1 |
| 3.2 | HEAT ELEMENT DIMENSIONS | 3-3 |
| 3.3 | PAPER FEED CHARACTERISTICS..... | 3-4 |
| 3.4 | STEP MOTOR CHARACTERISTICS..... | 3-5 |
| 3.4.1 | Motor Drive Circuit..... | 3-6 |
| 3.4.2 | Motor Timing..... | 3-8 |
| 3.4.3 | Precautions for Driving the Motor..... | 3-10 |
| 3.5 | THERMAL HEAD | 3-12 |
| 3.5.1 | Structure of the Thermal Head..... | 3-12 |
| 3.5.2 | Printed Position of the Data..... | 3-14 |
| 3.5.3 | Head Resistance | 3-15 |
| 3.5.4 | Head Voltage..... | 3-16 |
| 3.5.5 | Peak Current | 3-16 |
| 3.5.6 | Thermal Head Electrical Characteristics..... | 3-17 |
| 3.5.7 | Timing Chart..... | 3-18 |
| 3.6 | CONTROLLING THE HEAD ACTIVATION (DST) PULSE WIDTH..... | 3-19 |
| 3.6.1 | Calculation of Head Activation Pulse Width | 3-19 |
| 3.6.2 | Calculation of Applied Energy | 3-19 |
| 3.6.3 | Calculation of Head Activation Voltage | 3-20 |
| 3.6.4 | Calculation of Head Resistance | 3-20 |
| 3.6.5 | Determination of Activation Pause Time and Activation Pulse Period..... | 3-21 |
| 3.6.6 | Head Activation Pulse Term Coefficient..... | 3-21 |
| 3.6.7 | Head Storage Coefficient | 3-22 |
| 3.6.8 | Calculation Sample for the Head Activation Pulse Width | 3-23 |
| 3.6.9 | Thermistor Resistance | 3-24 |
| 3.6.10 | Detecting Abnormal Temperatures of the Thermal Head..... | 3-26 |
| 3.7 | OUT-OF-PAPER SENSOR | 3-27 |

| Section | Page |
|---------|------------------------------------|
| 3.8 | PLATEN POSITION SENSOR 3-28 |
| 3.8.1 | General Specification 3-28 |
| 3.8.2 | Sample External Circuit 3-28 |
| 3.9 | MODEL CODE LABEL 3-29 |

CHAPTER 4 CONNECTING EXTERNAL CIRCUITS

| | |
|-----|--|
| 4.1 | THERMAL HEAD CONTROL TERMINALS 4-1 |
| 4.2 | MOTOR AND SENSOR TERMINALS 4-3 |
| 4.3 | CAUTION IN CONNECTION 4-4 |

CHAPTER 5 DRIVE METHOD

| | |
|-----|-------------------------------------|
| 5.1 | THERMAL HEAD DRIVE TIMING 5-1 |
| 5.2 | MOTOR DRIVE TIMING 5-2 |

CHAPTER 6 HOUSING DESIGN GUIDE

| | |
|-------|--|
| 6.1 | SECURING THE PRINTER 6-1 |
| 6.1.1 | Printer Mounting Method 6-1 |
| 6.1.2 | Mounting Platen Block 6-2 |
| 6.1.3 | Precautions for Securing the Printer 6-4 |
| 6.2 | LAYOUT OF PRINTER AND PAPER 6-5 |
| 6.3 | WHERE TO MOUNT THE PAPER HOLDER 6-5 |
| 6.4 | SETTING THE PAPER 6-5 |
| 6.5 | POSITIONING THE PAPER CUTTER 6-6 |
| 6.6 | OUTER CASE STRUCTURE 6-7 |

CHAPTER 7 APPEARANCE AND DIMENSIONS

CHAPTER 8 LOADING/UNLOADING PAPER AND CLEANING

| | |
|-------|---|
| 8.1 | LOADING/UNLOADING PAPER PRECAUTIONS 8-1 |
| 8.2 | CLEANING PROCEDURE AND PRECAUTIONS 8-3 |
| 8.2.1 | PRECAUTIONS 8-3 |
| 8.2.2 | PROCEDURE 8-3 |

FIGURES

| Figure | | Page |
|--------|---|------|
| 3-1 | Heat Element Dimensions | 3-3 |
| 3-2 | Print Area | 3-3 |
| 3-3 | Sample Drive Circuit | 3-6 |
| 3-4 | Input Voltage Signals for the Sample Drive Circuit | 3-7 |
| 3-5 | Motor Start/Stop Timing | 3-8 |
| 3-6 | Motor Drive Timing Chart (in use at temperature over -5°C) | 3-10 |
| 3-7 | Motor Drive Timing Chart (in use at temperature under -5°C) | 3-11 |
| 3-8 | Thermal Head Block Diagram | 3-14 |
| 3-9 | Printed Position of the Data | 3-15 |
| 3-10 | Timing Chart | 3-18 |
| 3-11 | Thermistor Resistance vs. Temperature | 3-24 |
| 3-12 | Sample External Circuit of the Out-of-Paper Sensor | 3-27 |
| 3-13 | Sample External Circuit of the Platen Position Sensor | 3-28 |
| 3-14 | Model Code Label | 3-29 |
| | | |
| 4-1 | Thermal Head Control Terminals | 4-1 |
| 4-2 | Motor and Sensor Terminals | 4-3 |
| | | |
| 5-1 | Example of Timing Chart of the Thermal Head Driving | 5-1 |
| 5-2 | Example of Motor Drive Timing Chart | 5-3 |
| | | |
| 6-1 | How to secure the printer | 6-1 |
| 6-2 | How to secure the Platen Block | 6-2 |
| 6-3 | Mounting Position of the Platen Block | 6-3 |
| 6-4 | Paper Path | 6-5 |
| 6-5 | Paper Cutter Mounting Position | 6-6 |
| 6-6 | The Blade of the Paper Cutter | 6-6 |
| 6-7 | Sample Outer Case Structure | 6-7 |
| | | |
| 7-1 | Appearance and Dimensions (LTPH245D-C384-E) | 7-2 |
| 7-2 | Printer Main Body Appearance and Dimensions (LTPH245D-C384-E) | 7-3 |
| 7-3 | Appearance and Dimensions (LTPH245E-C384-E) | 7-4 |
| 7-4 | Printer Main Body Appearance and Dimensions (LTPH245E-C384-E) | 7-5 |
| 7-5 | Platen Block Appearance and Dimensions | 7-6 |
| | | |
| 8-1 | Loading Paper (1) | 8-1 |
| 8-2 | Loading Paper (2) | 8-2 |
| 8-3 | Cleaning Procedure | 8-3 |

TABLES

| Table | | Page |
|-------|--|------|
| 3-1 | General Specifications | 3-1 |
| 3-2 | Sample Motor Drive Frequency | 3-4 |
| 3-3 | General Specifications of the Motor | 3-5 |
| 3-4 | Excitation Sequence..... | 3-7 |
| 3-5 | Acceleration Steps | 3-12 |
| 3-6 | Blocks and Activated Heat Elements | 3-15 |
| 3-7 | Head Resistance Ranks..... | 3-15 |
| 3-8 | Head Voltage..... | 3-16 |
| 3-9 | Thermal Head Electrical Characteristics..... | 3-17 |
| 3-10 | Activation Pulse Width..... | 3-23 |
| 3-11 | Temperature and Thermistor Resistance | 3-25 |
| 3-12 | Out-of-Paper Sensor | 3-27 |
| 4-1 | Recommended Connectors | 4-1 |
| 4-2 | Thermal Head Control Terminal Assignments..... | 4-2 |
| 4-3 | Motor and Sensor Terminals Assignments | 4-3 |

CHAPTER 1

PRECAUTIONS

Read through this manual to design and operate the printer properly.
Pay special attention to the precautions noted in each section.

1.1 SAFETY PRECAUTIONS

Follow these precautions when designing a product using the printer, and include any necessary precautions and warning labels to ensure the safe operation of your product by users.

- **Preventing the thermal head from overheating**
When electricity is continuously supplied to the thermal head heat element by a CPU or other malfunction, the thermal head may overheat, causing smoke and fire.
Follow the method described in **Section 3.6.10** to monitor the temperature of the thermal head to prevent overheating.
Turn the printer off immediately if any abnormal conditions occur.
- **Preventing the user from touching the thermal head and motor**
Warn the user not to touch the thermal head, its periphery or motor as they are hot during and immediately after printing. Failure to follow this instruction may lead to personal injury including burns.
Also, allow cooling by designing clearance between the head, motor and the outer case.
- **Preventing the user from touching the rotary drive portion**
Design the product so that the motor does not operate when the outer case and platen block are open. The user could be caught in the motor when the drive gear is exposed.

1.2 DESIGN AND HANDLING PRECAUTIONS

To maintain the initial level of performance of the printer and to prevent future problems from occurring, observe the following precautions.

1.2.1 Design Precautions

- If too much energy is applied to the thermal head, it may overheat and become damaged. Always use the printer with the specified amount of energy. Do not apply a pulse of 2V and 20 nsec or higher to each signal terminal of the thermal head.
- Use C-MOS IC chips (74HC240 or equivalent) for interfacing the CLK, LATCH, DAT and DST signals of the thermal head.
- When turning the power on or off, always DISABLE (put in "Low" state) the DST terminals.
- To prevent the thermal head from being damaged by static electricity:
 - Fix the printer to the Frame Ground (FG) with the FG connector as shown in **Figure 7-2**.
 - Connect the GND terminal (SG) to FG through 1 MΩ resistor so that the electric potential of the SG of the thermal head and the FG of the printer are equal.
- Keep the Vp power off when not printing to prevent the thermal head from becoming electrically corroded. In addition, design the printer so that the signal GND of the thermal head and the frame GND of the printer mechanism become the same electric potential.
- Wire resistance should be 50 mΩ or less (however the less the better) between the power supply and the Vp, and the GND terminals on the thermal head controller. Maintain a considerable distance from signal lines to reduce electrical interference.
- The surge voltage between Vp and GND should not exceed 10 V.
- As a noise countermeasure, connect the capacitor noted below between the Vdd and GND terminals near the thermal head control connector.

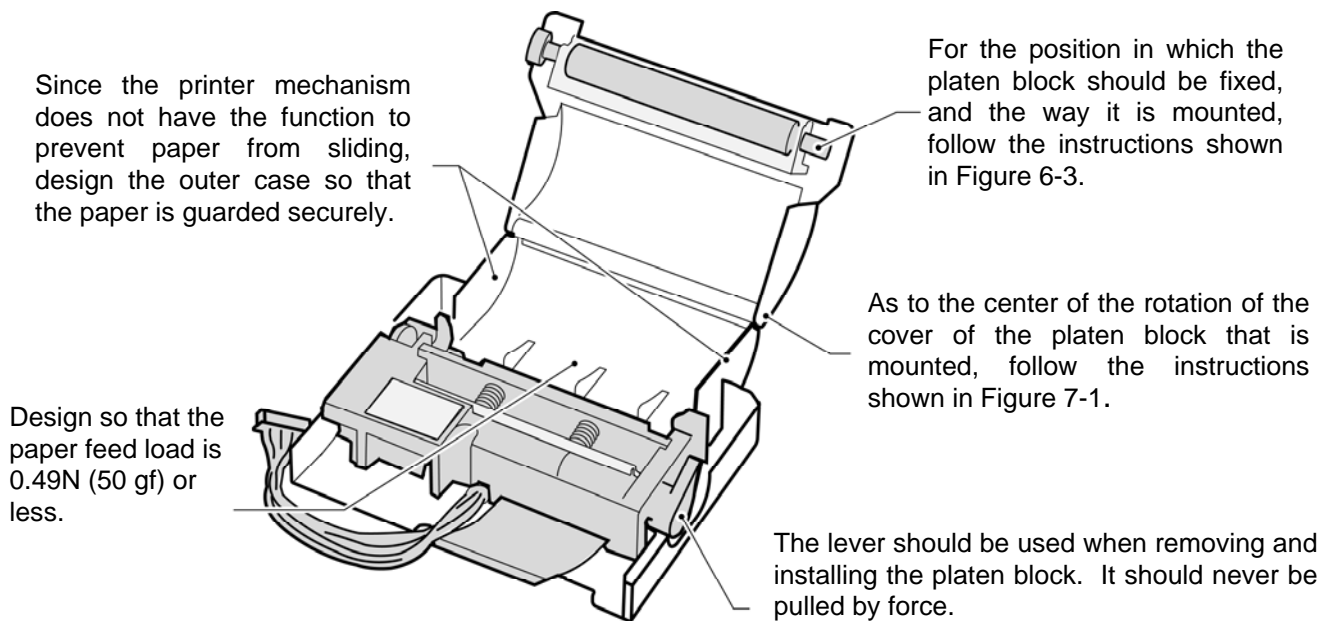
Vp ↔ GND: approximately 10μF
Vdd ↔ GND: approximately 1μF

- When turning the power on or off, perform the Vp and Vdd simultaneously or in the order of 1) and 2) as follows:

At power ON: 1) Vdd (5 V) → 2) Vp
At power OFF: 1) Vp → 2) Vdd (5 V)

- Always monitor the output of the platen position sensor and out-of-paper sensor. Incorrect activation of the thermal head may damage and reduce the longevity of the thermal head and the platen.
Design the outer case so that the out-of-paper sensor is not affected by light from outside. Since a reflection type photo interrupter is used in the out-of-paper sensor, the sensor may be affected by light from outside.

- Allow for movement of the FFC when designing the outer case because the FFC will shift 1 to 2 mm from the thermal head moving. Also, design the outer case so that it prevents the paper feed out from being caught in the platen.
- Surface of thermal paper may get scratched by backward feed. The backward feed may cause paper skew and jams depending on paper roll layout and designing of paper holder. Be sure to confirm performance with your product before using the backward feed.
- To prevent deterioration in printing quality due to backlash of the paper feed system, the motor should be driven 40 steps in a reverse direction and then 40 steps in the normal direction during initialization, a time after backward feeding and a time after setting/releasing the platen block.
- If printing at a high print ratio for longer length, non-printing area may be colored. Verify the performance with your actual device.



1.2.2 Handling Precautions

To maintain the initial level of performance of the printer and to prevent future problems from occurring, observe the following precautions.

Also, include any necessary precautions to ensure the safe operation of your product by users.

- To protect the heat elements, ICs, etc. from static electricity, discharge all static electricity before handling the printer.
Pay special attention to the thermal head control terminals when handling.
- Do not apply stress to the thermal head control terminals: Doing so may damage the connectors and FFC (Flexible Flat Cable).
- Using anything other than the specified paper may cause the following:
 - Poor printing quality
 - Abrasion of the thermal head
 - The thermal surface of the paper and the thermal head may stick together
 - Excessive noise
 - Fading print
 - Corroded thermal head
- Always print or feed with the specified paper inserted to protect the platen, thermal head, and reduction gear.
- Do not hit or scratch the surface of the thermal head with sharp or hard objects as it may damage the heat element.
- If the thermal head remains in contact with the platen, the platen may become deformed and deteriorate print quality.
If the platen is deformed, the uneven surface of the platen can be recovered by feeding paper for a while.
- Never connect or disconnect cables with the power on. Always power off the printer first.
- When printing a black or checkered pattern at a high print rate in a low temperature or high humidity environment, the vapor from the paper during printing may cause condensation to form on the printer or may soil the paper.
If water condenses on the printer, keep the thermal head away from water drops as it may corrode the thermal head, and turn printer power off until it dries.
- Prevent contact with water and do not operate with wet hands as it may damage the printer or cause a short circuit or fire.
- Never use the printer in a dusty place, as it may damage the thermal head and paper feeder.
- Do not use the printer in corrosive gas and siloxane atmosphere as it may cause contact failure.

1.2.3 Precautions on Discarding

When discarding used printers, discard them according to the disposal regulations and rules of each respective district.

CHAPTER 2

FEATURES

The LTPH245 Line Thermal Printer Mechanism is a compact, high-speed thermal line dot printing mechanism. It can be used with a measuring instrument and analyzer, a POS, a communication device, or a data terminal device. Since the printer can be battery driven, it can easily be mounted onto a portable device such as a hand-held terminal.

The LTPH245 has the following features:

- **Battery drive**
Since the range of operating voltage of 4.2V to 8.5V is wide, four to six Ni-Cd batteries or Ni-MH batteries or two Lithium-ion batteries can also be used.
- **Compact and light weight**¹
The mechanism is compact and light: 76.8 mm in width, 38 mm in depth, 16 mm in height, and approximately 46 g in weight.
- **Improved operability**
The platen roller can be released easily by lever operation allowing easy paper installation and head cleaning.
- **High resolution printing**
A high-density print head of 8 dots/mm produces clear and precise printing.
- **Longevity**
The mechanism is maintenance-free with a long life of 50 km print length and/or 100 million pulses.
- **High speed printing**²
A maximum print speed of 200 dot lines per second (25 mm per second) at 5 V, 450 dot lines per second (56.25 mm per second) at 7.2 V, and 500 dot lines per second (62.5 mm per second) at 8.0 V are attainable.
- **Low current consumption**
The printer can be driven on low discharge current lithium-ion batteries due to low current consumption. Continuous printing can be also performed.

- **Low noise**

Thermal line dot printing is used to guarantee low-noise printing.

- **Realizing easy design of outer case**

The printer mechanism is designed to fit easily into the outer case, allowing for reduced number of outer case parts.

¹ The external dimensions exclude those of the lever and platen frame. 46 g in weight includes all parts.

² Print speed differs depending on working and environmental conditions.

CHAPTER 3
SPECIFICATIONS

3.1 GENERAL SPECIFICATIONS

Table 3-1 General Specifications

| Item | Specification |
|---|--|
| Print method | Thermal dot line printing |
| Dots per line | 384 dots |
| Resolution | 8 dots/mm |
| Print width | 48 mm |
| Maximum printing speed | 200 dot lines/s (25.0 mm/s) (at 5 V) ¹ 450 dot lines/s (56.25 mm/s) (at 7.2 V) ¹ 500 dot lines/s (62.5 mm/s) (at 8.0 V) ¹ |
| Paper feed pitch | 0.125 mm |
| Head temperature detection | Via thermistor |
| Platen position detection | Via mechanical switch |
| Out-of-paper detection | Via photo interrupter |
| Operating voltage range V _P line (for head and motor drive) V _{dd} line (for head logic) | 4.2 V to 8.5 V ⁷ (equivalent to four through six Ni-Cd or Ni-MH batteries, or two lithium-ion batteries) 4.5 V to 5.5 V |
| Current consumption For driving the head (V _P) For driving the motor (V _P) For head logic (V _{dd}) | Average: 1.5 A (at 5 V), 2.2 A (at 7.2 V), 2.6 A (at 8.5 V) ² Maximum: 1.6 A (at 5 V), 2.3 A (at 7.2 V), 2.7 A (at 8.5 V) ² Maximum 0.46 A Maximum 0.01 A |

¹ Maximum printing speed is attained with the following conditions:

- When the driving voltage is 5 V, the character size is a 24-dot font, the line spacing is 16 dots, the temperature of the head is 60°C or more, and the number of simultaneously activated dots is 64 dots or less
- When the driving voltage is 7.2 V, the temperature of the head is 40°C or more, and the number of simultaneously activated dots is 64 dots or less
- When the driving voltage is 8.0 V, the temperature of the head is 30°C or more, and the number of simultaneously activated dots is 64 dots or less.

² When the number of simultaneously activated dots is specified as 64.

Table 3-1 General Specifications (Continued)

| Item | Specification |
|--|---|
| Operating temperature range | -30°C to 70°C ³ No condensation |
| Storage temperature range | -35°C to 75°C ³ No condensation |
| Life span (at 25°C and rated energy) Activation pulse resistance Abrasion resistance | 100 million pulses or more (print ratio=12.5%) 50 km or more |
| Paper width | 58. ₁ ⁺⁰ mm |
| Paper feeding force | 0.49N (50 gf) or more |
| Paper holding force | 0.78N (80 gf) or more |
| Dimensions (width×depth×height) | 76.8 × 38.0 × 16.0 mm (excluding lever) |
| Mass | Approximately 46 g |
| Recommended thermal paper ⁵ | TF50KS-E2D (59 μm paper) from Nippon Paper Industries TP50KJ-R (65 μm paper) from Nippon Paper Industries AP50KS-E (65 μm paper) from Nippon Paper Industries HP220A (65 μm paper) from Mitsubishi Paper Industries PD160R-N (75 μm paper) ⁴ from Oji Paper Industries (Normal Thermal Paper) from Koehler AG F5041 (75 μm paper) from Mitsubishi Hitec Paper AF50KS-E (75 μm paper) from Jujo thermal Ltd. |

³ Outside this range, printing may blot or be light.

⁴ When the print ratio is high, this thermal paper may generate a noise during printing.

⁵ The paper roll should be placed facing the thermal surface outward (See **Figure 6-3**). Also, do not use paper with edges that are pasted or have turnups at the start of the roll. If they need to be used unavoidably, replace with new paper roll as soon as possible before the entire roll is used up.

3.2 HEAT ELEMENT DIMENSIONS

The printer contains a thermal head with 384 heat elements (dot-size).

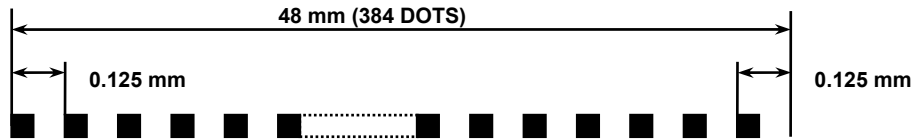


Figure 3-1 Heat Element Dimensions

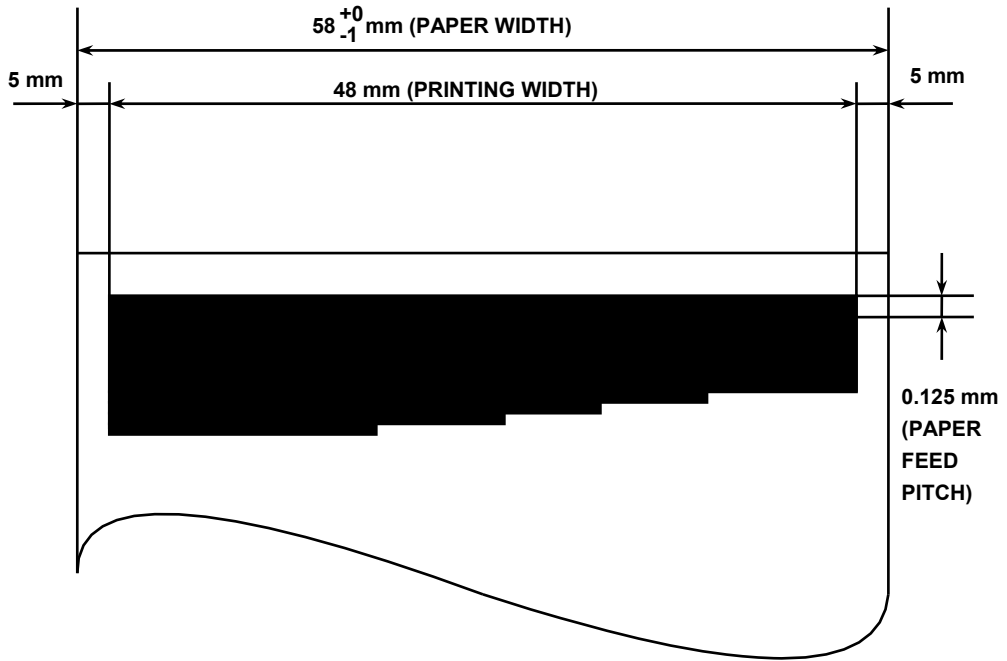


Figure 3-2 Print Area

3.3 PAPER FEED CHARACTERISTICS

- Paper is fed in a forward direction when the motor shaft is rotating in the normal direction (clockwise) when seen from the motor gear side.
- The motor is driven by a 2-2 phase excitation, constant current chopper method and feeds paper 0.125 mm (equivalent to a single dot pitch) every two steps of the motor drive signal.
- To prevent deterioration in printing quality due to backlash of the paper feed system, the motor should be driven 40 steps in a reverse direction and then 40 steps in the normal direction during initialization, a time after backward feeding and a time after setting/releasing the platen block.
- During paper feeding, the motor should be driven lower than the value obtained by equation (1).

Equation (1):

$$V_p \times 165 - 220 \text{ (pps) (max.1000 (pps))}$$

- During printing, the motor drive frequency should be adjusted according to working conditions such as voltage, temperature, number of activated dots, etc. (For details, see **CHAPTER 5 DRIVE METHOD.**)
- Do not print while the motor is rotating in the reverse direction.

Table 3-2 Sample Motor Drive Frequency

| Operating Voltage | Drive Frequency (Paper feed) |
|-------------------|---------------------------------|
| 4.2 V | 473 pps |
| 5 V | 605 pps |
| 6 V | 770 pps |
| 7.2 V | 968 pps |
| 8 V | 1000 pps |
| 8.5 V | 1000 pps |

3.4 STEP MOTOR CHARACTERISTICS

Table 3-3 General Specifications of the Motor

| Item | Specification |
|------------------------------|--|
| Type | PM |
| Number of phases | 4-phase |
| Drive method | Bipolar chopper |
| Excitation | 2-2 phase |
| Winding resistance per phase | 14 Ω \pm 10% |
| Rated voltage | 4.2 - 8.5 V |
| Rated current | 0.23 A/phase, 0.15A/phase ¹ |
| Maximum current consumption | 0.46 A |
| Drive frequency | 50 - 1000 pps (according to drive voltage) |

¹ See 3.4.3 Precautions for Driving the Motor.

3.4.1 Motor Drive Circuit

(1) Sample Drive Circuit

Sample drive circuits for the motor are shown in **Figure 3-3**.

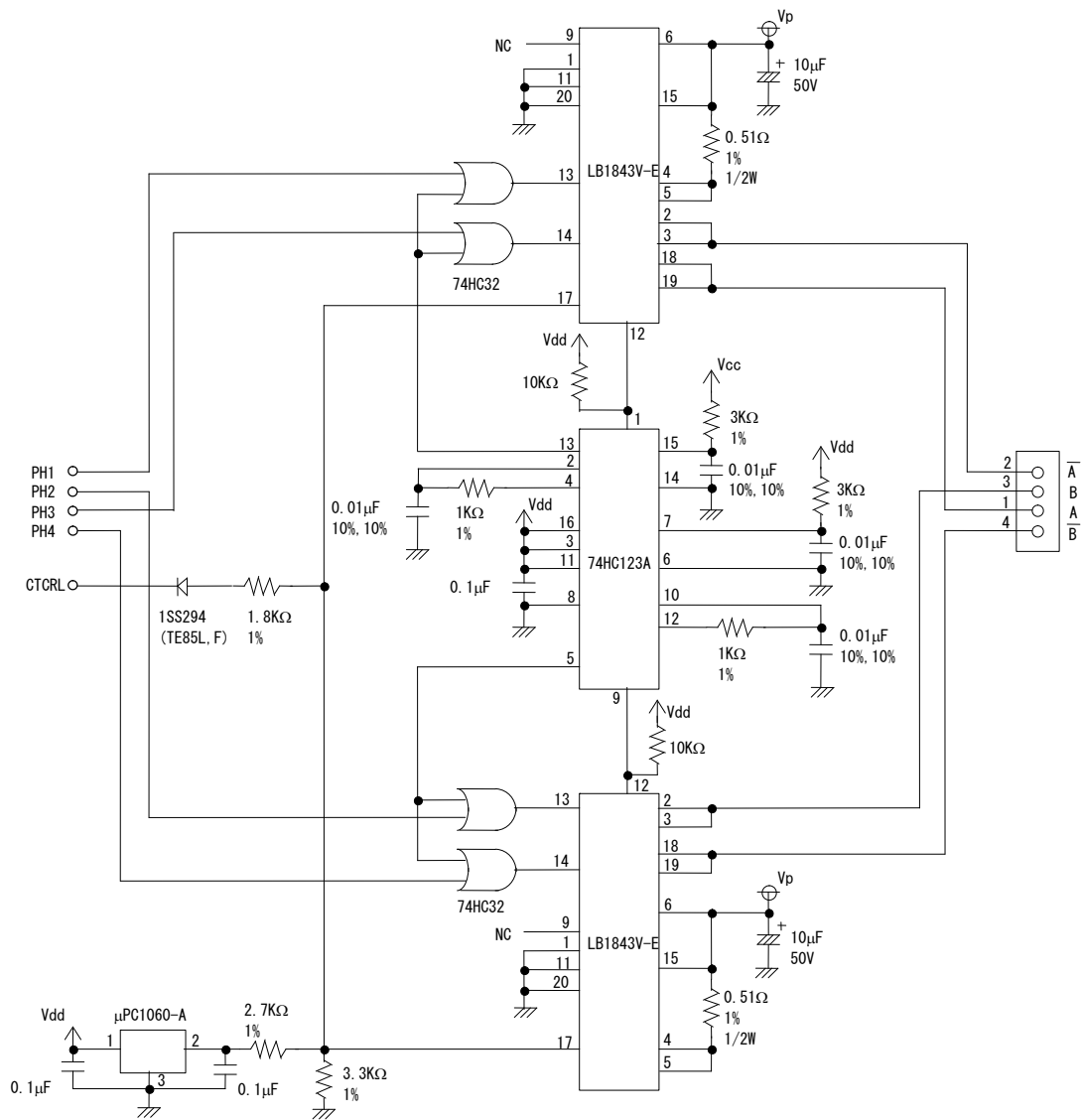


Figure 3-3 Sample Drive Circuit

(2) Excitation Sequence

As shown in **Table 3-4**, the printer feeds paper in the normal direction when the motor is excited in the order of step 1, step 2, step 3, step 4, step 1, step 2, On the other hand, to rotate the motor in a reverse direction, drive the motor in the reverse order of: step 4, step 3, step 2, step 1, step 4, step 3,

Table 3-4 Excitation Sequence

| Signal Name | Sequence | | | |
|----------------|----------|--------|--------|--------|
| | Step 1 | Step 2 | Step 3 | Step 4 |
| \overline{A} | Low | High | High | Low |
| B | High | High | Low | Low |
| A | High | Low | Low | High |
| \overline{B} | Low | Low | High | High |

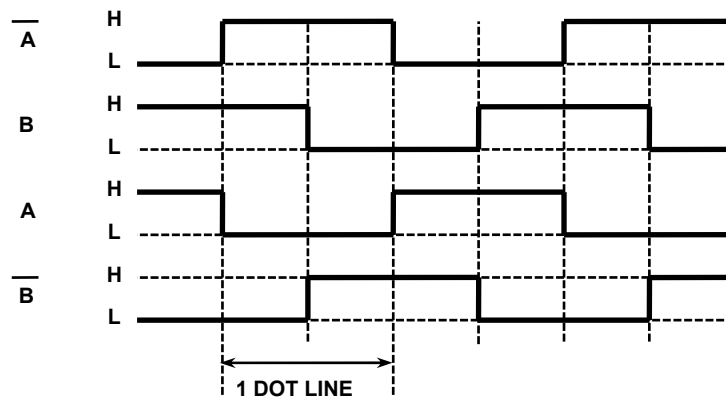


Figure 3-4 Input Voltage Signals for the Sample Drive Circuit

3.4.2 Motor Timing

Refer to the timing chart in **Figure 3-5** when designing the control circuit and/or software for starting and stopping the motor. Also take note of the following precautions:

Precautions for Designing the Motor Control Circuit and Software

(1) Stop step

- To stop the motor, excite for a single step period with a phase that is the same as the final one in the printing step.

(2) Pause state

- In the pause state, do not excite the step motor to prevent the motor from overheating. Even when the step motor is not excited, it maintains a holding force to prevent paper from sliding.

(3) Start step

- To restart the motor from the stop step, shift the motor into the printing sequence.
- To restart the motor from the pause (no excitation) state, shift the motor into the printing sequence after outputting a single step of a phase that is the same as that of the stop step.

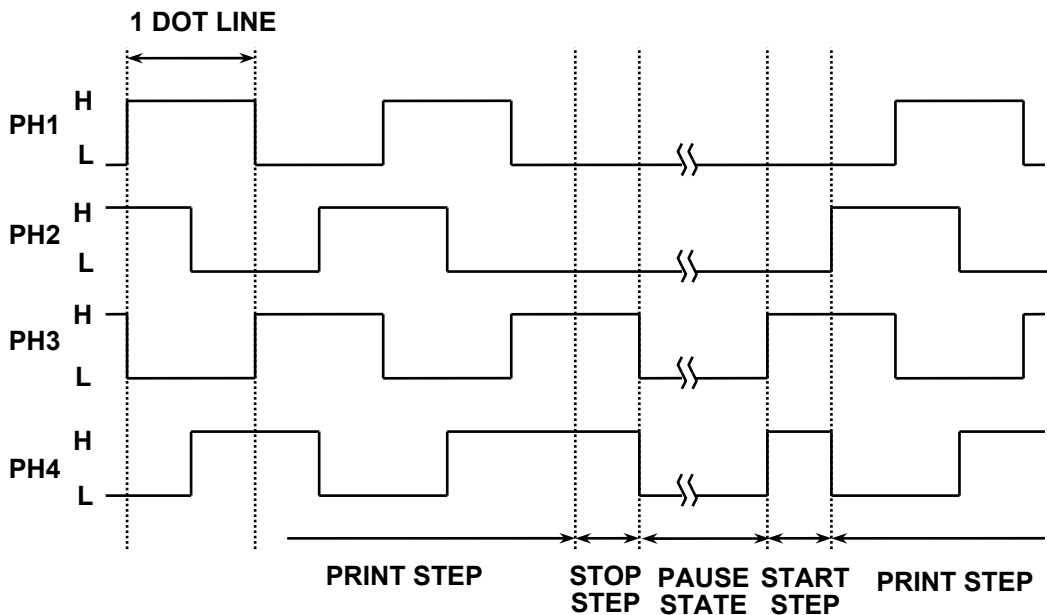


Figure 3-5 Motor Start/Stop Timing

(4) Others

- Do not print paper in intermittent feed mode. Doing so may deteriorate the printing quality due to irregular paper feeding pitch.
- To print characters and bit images, always follow the start step and stop step.
- When rotating the motor in the reverse direction (when rotating from CW to CCW, or vice versa), input the start step using the first step time shown in **Table 3-5 Acceleration Steps**. Furthermore, we recommend that you drive the motor for the first step time at a constant speed during the period of the backlash absorption step.
- Frequent, normal/reverse rotations will reduce the longevity of the printer's driving system. In addition, after normal/reverse rotation, note that the writing start position has shifted due to a backlash of the driving system or elasticity transformation of the platen rubber.
- When the motor step is stopped in the dot lines where head activation was performed, the thermal head may stick to the surface of the paper and cause paper feed problems. Therefore, stop the motor drive in the dot lines where head activation is not performed.

3.4.3 Precautions for Driving the Motor

(1) Motor Current Control

When the motor speed decreases during printing because of the division drive method, the contents of print data, or input data transfer speed, noise and overheating of the motor may occur due to over-torque of the motor.

To prevent these symptoms from occurring, control the motor current as follows:

First, activate the motor with the 1st setting current in each motor drive step.

Change the activation current to the 2nd setting current after activating the motor with the 1st setting current for T1.

T1 is defined from each period of the motor drive step and Vp voltage as follows:

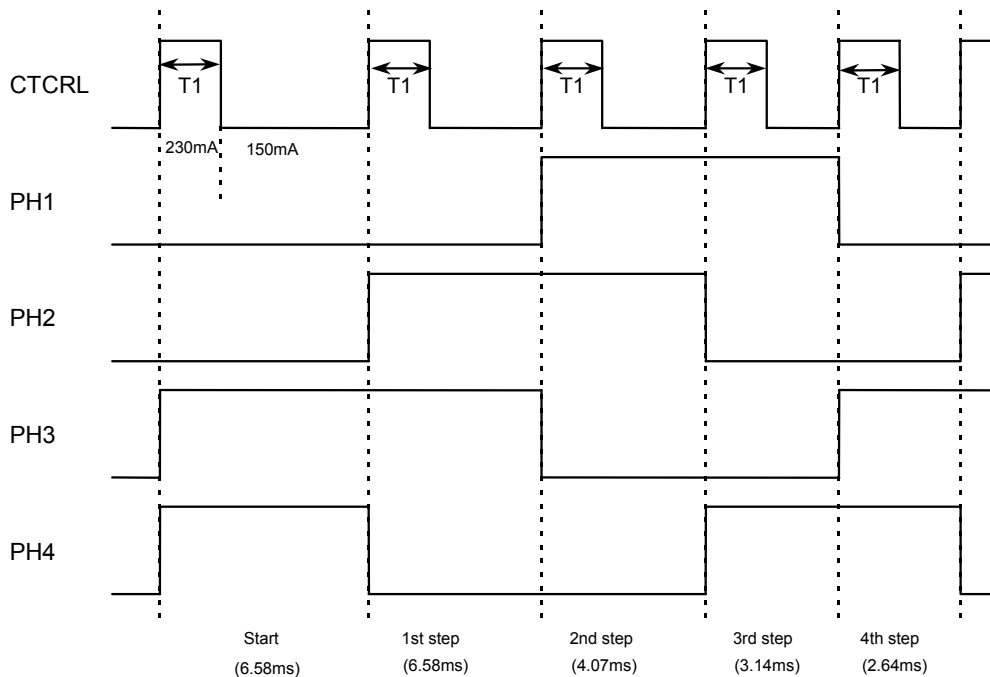
How to define T1 (unit: μ s)

When Vp is under 7.2 V :

T1: Compare the following two values and adopt the smaller one.
(Each period of the motor drive step - 500) and 925.9

When Vp is 7.2 V or more :

T1: Compare the following two values and adopt the smaller one.
(Each period of the motor drive step - 500) and $(1000000 / (3600 - Vp \times 350))$



Set the 1st setting current at CTCRL="High": 0.23 (A)
Set the 2nd setting current at CTCRL="Low": 0.15 (A)

Figure 3-6 Motor Drive Timing Chart (in use at temperature over -5°C)

In use at temperature below -5°C

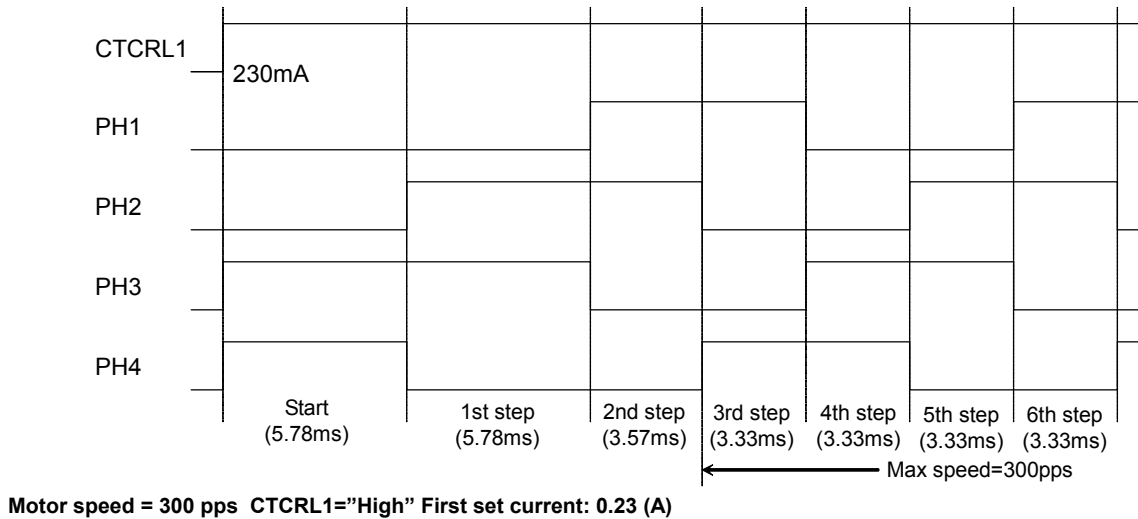


Figure 3-7 Motor Drive Timing Chart (in use at temperature below -5°C)

(2) Acceleration Control

When driving the motor, acceleration control is needed to start paper feeding. When the motor is to be driven at the maximum motor drive frequency that is calculated using equation (1), the motor may come out of step under heavy load.

Drive the motor to the maximum driving speed that is calculated using equation (1), according to the acceleration steps in **Table 3-5**.

The method for accelerating the motor is as follows;

1. Output start step (6580 (μs)) for the time calculated using equation (1)
2. Output first step for the first acceleration step time
3. Output second step for the second acceleration step time
4. Output nth step for the nth step acceleration time
5. After outputting the time calculated using equation (1), the motor is driven at a constant speed.

The printer can print during acceleration.

Set the maximum drive speed to 300 pps (3333 μs) for printing at lower than -5°C.

When accelerating it again after decreasing the speed, follow the method shown below.

When the step time is T_m (the reciprocal number of the frequency calculated using equation (1)), compare T_m with the time that was taken in the previous step.

- (1) In case $T_m >$ time that was taken in the previous step (i.e. decreasing speed) the closest acceleration step time to T_m and the acceleration step time that is larger than T_m , are output.
- (2) In case $T_m <$ time that was taken in the previous step (i.e. reacceleration time) the next closest acceleration step time to the previous step time or T_m , which is longer, is output.

Table 3-5 Acceleration Steps

| Number of Steps | Speed (pps) | Step Time (μs) |
|------------------------|--------------------|--------------------------------------|
| start | — | 6580 |
| 1 | 152 | 6580 |
| 2 | 246 | 4066 |
| 3 | 318 | 3140 |
| 4 | 379 | 2636 |
| 5 | 433 | 2311 |
| 6 | 493 | 2028 |
| 7 | 547 | 1828 |
| 8 | 597 | 1675 |
| 9 | 644 | 1553 |
| 10 | 687 | 1456 |
| 11 | 728 | 1374 |
| 12 | 768 | 1302 |
| 13 | 805 | 1242 |
| 14 | 840 | 1191 |
| 15 | 874 | 1144 |
| 16 | 907 | 1103 |
| 17 | 939 | 1065 |
| 18 | 970 | 1031 |
| 19 | 1000 | 1000 |

3.5 THERMAL HEAD

3.5.1 Structure of the Thermal Head

As shown in **Figure 3-7**, the thermal head of the printer consists of 384 heat elements, and head drivers to drive the heat elements.

Serial printing data input from the DAT terminal is transferred to the shift register synchronously with the CLK signal, then stored in the latch register with the timing of the LATCH signal.

Inputting the head activation signal (DST 1 to 6) activates heat elements in accordance with the printing data stored in the latch register.

A maximum of six division printing is available for the printer.

Table 3-7 shows the relationship between DST signals and heat elements.

Table 3-6 Blocks and Activated Heat Elements

| Block Number | Heat Element Number | Dots / DST |
|--------------|---------------------|------------|
| 1 | 1 - 64 | 64 |
| 2 | 65 - 128 | 64 |
| 3 | 129 - 192 | 64 |
| 4 | 193 - 256 | 64 |
| 5 | 257 - 320 | 64 |
| 6 | 321 - 384 | 64 |

3.5.2 Printed Position of the Data

Data dots from 1 to 384 which are transferred through DAT are printed as shown in **Figure 3-8**.

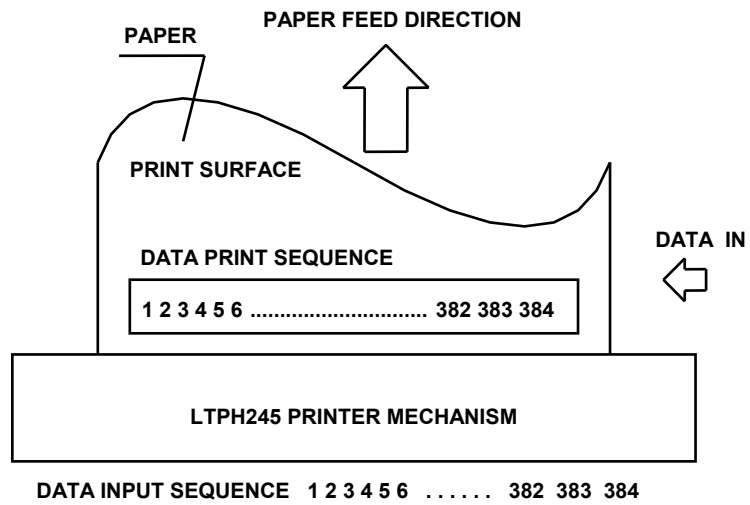


Figure 3-9 Printed Position of the Data

3.5.3 Head Resistance

The LTPH245 head resistance is $176 \Omega \pm 4 \%$.

3.5.4 Head Voltage

The LTPH245 has a built-in head driver IC and control IC. **Table 3-7** shows the head voltage.

Table 3-4 Head Voltage

| Item | | Voltage Range |
|--------------------|-----|---------------|
| Head drive voltage | Vp | 4.2 to 8.5 V |
| Head logic voltage | Vdd | 4.5 to 5.5 V |

3.5.5 Peak Current

Since the peak current (maximum current) may reach the values calculated using equation (2) when the thermal head is driven, make sure that the allowable current for the cable material and the voltage drop on the cables are well within the specified range.

Equation (2):

$$I_p = \frac{N \times V_p}{R_H}$$

- I_p: Peak current (A)
- N: Number of dots that are driven simultaneously
- V_p: Head drive voltage (V)
- R_H: Head resistance (Ω)

3.5.6 Thermal Head Electrical Characteristics

Table 3-9 Thermal Head Electrical Characteristics

(Vdd=4.5 to 5.5V, Ta=0 to 50°C)

| Item | Simbol | Conditions | Rated Values | | | Unit | |
|----------------------|--------|------------------------------|-------------------------------------|-----|---------|------|----|
| | | | MIN | TYP | MAX | | |
| Head resistance | RH | | 169 | 176 | 183 | Ω | |
| Head drive voltage | Vp | | 4.2 | - | 8.5 | V | |
| Head drive current | Ip | max. common activated dot 64 | 2.5 | 2.6 | 2.7 | A | |
| Logic block voltage | Vdd | | 4.5 | 5.0 | 5.5 | V | |
| Logic block current | Idd | Ta=25°C | Waiting for activation | - | - | 0.5 | mA |
| | | | fclk=4MHz,DAT=fixed | - | - | 6 | mA |
| | | | fclk=4MHz,DAT=1/2fclk | - | - | 10 | mA |
| "High" input voltage | Vih | CLK,DAT,LATCH,DST | 0.8×Vdd | - | Vdd | V | |
| "Low" input voltage | Vil | CLK,DAT,LATCH,DST | 0 | - | 0.2×Vdd | V | |
| "High" input current | CLK | lih | Ta=25°C Vdd=5.0(V) Vih=5.0(V) | - | - | 3 | μA |
| | DAT | | | - | - | 0.5 | μA |
| | LATCH | | | - | - | 3 | μA |
| | DST | | | - | - | 55 | μA |
| "Low" input current | CLK | lil | Ta=25°C Vdd=5.0(V) Vil=0(V) | - | - | -3 | μA |
| | DAT | | | - | - | -0.5 | μA |
| | LATCH | | | - | - | -3 | μA |
| | DST | | | - | - | -0.5 | μA |
| Driver leak current | I leak | Vp=7(V), for 1 bit | - | - | 1.0 | μA | |
| CLK frequency | fclk | | - | - | 4 | MHz | |
| CLK pulse width | t1 | See the Timing Chart | 80 | - | - | ns | |
| DAT setup-time | t2 | See the Timing Chart | 50 | - | - | ns | |
| DAT hold time | t3 | See the Timing Chart | 50 | - | - | ns | |
| LATCH setup time | t4 | See the Timing Chart | 120 | - | - | ns | |
| LATCH pulse width | t5 | See the Timing Chart | 120 | - | - | ns | |
| LATCH hold time | t6 | See the Timing Chart | 120 | - | - | ns | |
| DST setup time | t7 | See the Timing Chart | 120 | - | - | ns | |

3.5.7 Timing Chart

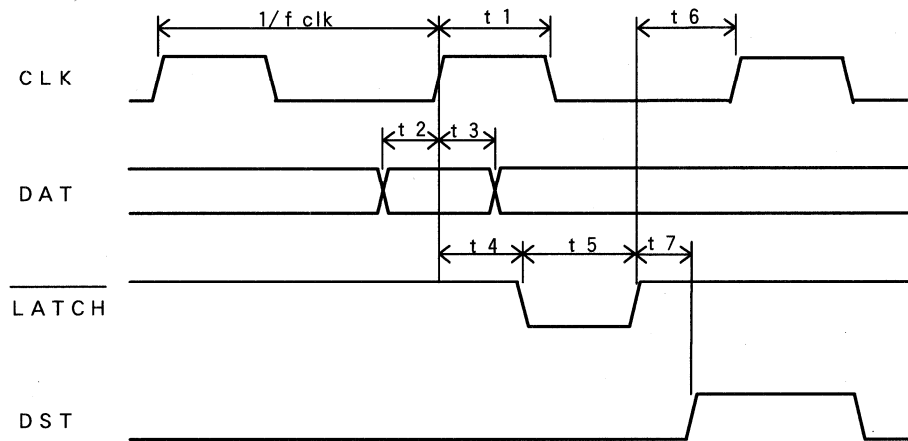


Figure 3-10 Timing Chart

3.6 CONTROLLING THE HEAD ACTIVATION (DST) PULSE WIDTH

3.6.1 Calculation of Head Activation Pulse Width

Head activation pulse width is calculated using the following equation (3).

To execute high quality printing using the printer, the value that is calculated using the following equation (3) must be adjusted according to the environment the printer is used in. Calculate each value used according to the steps in **Sections 3.6.2 to 3.6.7** and control them so that the pulse width with the t value obtained by substituting each value into the equation (3) is applied.

Printing using too high of a voltage or too long of a pulse width may shorten the life of the thermal head.

Equation (3):

$$t = \frac{E \times R}{V^2} \times C \times D$$

t : Head pulse width (ms)

E : Applied energy (mj)

See **Section 3.6.2.**

V : Applied voltage (V)

See **Section 3.6.3.**

R : Head resistance (Ω)

See **Section 3.6.4.**

C : Head pulse term coefficient

See **Section 3.6.6.**

D : Heat storage coefficient

See **Section 3.6.7.**

3.6.2 Calculation of Applied Energy

Applied energy should be in accordance with the temperature of the thermal head and the environment the printer is used in.

The thermal head has a built-in thermistor. Measure the temperature using thermistor resistance. Standard applied energy is based on a temperature of 25°C. Calculate the printing energy using equation (4) and the temperature coefficient.

Equation (4):

$$E = (0.260 - T_C \times (T_X - 25))$$

T_X : Detected temperature using the thermistor ($^{\circ}\text{C}$)¹

T_C : Temperature coefficient 0.003373

1 The thermistor resistance value at T_X ($^{\circ}\text{C}$). See **Section 3.6.9.**

3.6.3 Calculation of Head Activation Voltage

Calculate the applied voltage using equation (5).

Equation (5):

$$V = V_p \times 0.98 - 1.26$$

V_p : Head activation voltage (V)

3.6.4 Calculation of Head Resistance

A drop in voltage occurs depending on the wiring resistance. Calculate the head resistance using equation (6).

Equation (6):

$$R = \frac{(RH + 25 + (R_C + r_C) \times N)^2}{RH}$$

- RH : Head resistance 178.5 (Ω)
- 25 : Wiring resistance in the thermal head (Ω)
- R_C : Common terminal wiring resistance in the thermal head: 0.2 (Ω)
- r_C : Wiring resistance between V_P and GND (Ω)¹
- N : Number of dots driven simultaneously

¹ It indicates a series resistance of wire and relay switching circuits used between the FFC terminals and power supply.

3.6.5 Determination of Activation Pause Time and Activation Pulse Period

Dot lines may be activated in succession to the same thermal dot in order to protect thermal head elements. Determine the activation period (the time from the preceding activation start to the current activation start) which conforms to equation (7) to reserve the pause time.

Equation (7):

$$W > t + 0.5(\text{ms})$$

W : Activation period of 1-dot line (ms)

3.6.6 Head Activation Pulse Term Coefficient

Make adjustments using the head activation pulse term coefficient (equal motor drive frequency) as the printing density changes by the printing speed. According to equations (8), calculate compensation coefficient C of the heat pulse.

Equation (8):

$$C = 1 - 2.6/(5.0 + w)$$

w = 2000 / motor drive frequency

3.6.7 Heat Storage Coefficient

In high speed printing, a difference in temperature arises between the rise in temperature of the thermal head due to head activation and the temperature detected by the thermistor. Therefore, the activation pulse must be corrected by simulating a rise in the temperature of the thermal head.

No correction is needed when the print ratio is low. When correction is not needed, set "1" as the heat storage coefficient.

The heat storage coefficient is calculated as follows:

- 1) Prepare the heat storage software counters to simulate heat storage.

- (a) Heat storage due to head activation

The heat storage counter counts up in each print period as follows.

$$T' = T + \frac{N}{6}$$

T : Heat storage counter value

N : Number of the activated dots

- (b) Radiation

The heat storage counter value is multiplied by the radiation coefficient in each 2 msec.

$$T' = T \times K$$

K : Radiation coefficient 0.996

- 2) Calculate the heat storage coefficient with the following equation (9).

Equation (9)

$$D = 1 - \frac{T}{31936}$$

3.6.8 Calculation Sample for the Head Activation Pulse Width

Table 3-10 lists the calculation sample of the head activation pulse width that was calculated using equation (3) and the values obtained using equations (4) to (8).

Table 3-10 Activation Pulse Width

| Head Drive Voltage (V) | Thermistor Temperature°C | Motor Drive Frequency (PPS) | | | | | | | | | |
|------------------------|--------------------------|-----------------------------|------|------|------|------|------|------|------|------|------|
| | | 100 | 200 | 300 | 400 | 500 | 600 | 700 | 800 | 900 | 1000 |
| 4.2 | 0 | 9.91 | | | | | | | | | |
| | 10 | 8.94 | | | | | | | | | |
| | 20 | 7.97 | | | | | | | | | |
| | 30 | 7.00 | | | | | | | | | |
| | 40 | 6.03 | | | | | | | | | |
| | 50 | 5.06 | 4.67 | | | | | | | | |
| | 60 | 4.09 | 3.77 | | | | | | | | |
| | 70 | 3.12 | 2.87 | 2.70 | | | | | | | |
| 5.0 | 0 | 6.10 | | | | | | | | | |
| | 10 | 5.51 | | | | | | | | | |
| | 20 | 4.91 | 4.53 | | | | | | | | |
| | 30 | 4.31 | 3.98 | | | | | | | | |
| | 40 | 3.71 | 3.42 | 3.22 | | | | | | | |
| | 50 | 3.11 | 2.87 | 2.70 | | | | | | | |
| | 60 | 2.52 | 2.32 | 2.18 | 2.08 | 2.00 | | | | | |
| | 70 | 1.92 | 1.77 | 1.66 | 1.58 | 1.52 | 1.47 | | | | |
| 6.0 | 0 | 3.79 | 3.50 | 3.29 | | | | | | | |
| | 10 | 3.42 | 3.15 | 2.96 | | | | | | | |
| | 20 | 3.05 | 2.81 | 2.64 | | | | | | | |
| | 30 | 2.68 | 2.47 | 2.32 | 2.21 | | | | | | |
| | 40 | 2.30 | 2.13 | 2.00 | 1.90 | 1.83 | | | | | |
| | 50 | 1.93 | 1.78 | 1.68 | 1.60 | 1.53 | 1.48 | | | | |
| | 60 | 1.56 | 1.44 | 1.35 | 1.29 | 1.24 | 1.20 | 1.17 | | | |
| | 70 | 1.19 | 1.10 | 1.03 | 0.98 | 0.94 | 0.91 | 0.89 | | | |
| 7.2 | 0 | 2.41 | 2.22 | 2.09 | 1.99 | 1.91 | | | | | |
| | 10 | 2.17 | 2.00 | 1.88 | 1.79 | 1.72 | 1.67 | | | | |
| | 20 | 1.94 | 1.79 | 1.68 | 1.60 | 1.54 | 1.49 | | | | |
| | 30 | 1.70 | 1.57 | 1.47 | 1.40 | 1.35 | 1.31 | 1.27 | 1.24 | | |
| | 40 | 1.46 | 1.35 | 1.27 | 1.21 | 1.16 | 1.12 | 1.09 | 1.07 | 1.05 | |
| | 50 | 1.23 | 1.13 | 1.07 | 1.01 | 0.97 | 0.94 | 0.92 | 0.90 | 0.88 | |
| | 60 | 0.99 | 0.92 | 0.86 | 0.82 | 0.79 | 0.76 | 0.74 | 0.72 | 0.71 | |
| | 70 | 0.76 | 0.70 | 0.66 | 0.62 | 0.60 | 0.58 | 0.56 | 0.55 | 0.54 | |
| 8.0 | 0 | 1.87 | 1.72 | 1.62 | 1.54 | 1.48 | 1.43 | 1.39 | | | |
| | 10 | 1.68 | 1.55 | 1.46 | 1.39 | 1.34 | 1.29 | 1.26 | 1.23 | 1.20 | |
| | 20 | 1.50 | 1.39 | 1.30 | 1.24 | 1.19 | 1.15 | 1.12 | 1.10 | 1.07 | |
| | 30 | 1.32 | 1.22 | 1.14 | 1.09 | 1.05 | 1.01 | 0.98 | 0.96 | 0.94 | 0.93 |
| | 40 | 1.14 | 1.05 | 0.99 | 0.94 | 0.90 | 0.87 | 0.85 | 0.83 | 0.81 | 0.80 |
| | 50 | 0.95 | 0.88 | 0.83 | 0.79 | 0.76 | 0.73 | 0.71 | 0.69 | 0.68 | 0.67 |
| | 60 | 0.77 | 0.71 | 0.67 | 0.64 | 0.61 | 0.59 | 0.57 | 0.56 | 0.55 | 0.54 |
| | 70 | 0.59 | 0.54 | 0.51 | 0.48 | 0.47 | 0.45 | 0.44 | 0.43 | 0.42 | 0.41 |
| 8.5 | 0 | 1.62 | 1.49 | 1.40 | 1.34 | 1.28 | 1.24 | 1.21 | 1.18 | | |
| | 10 | 1.46 | 1.35 | 1.27 | 1.21 | 1.16 | 1.12 | 1.09 | 1.06 | 1.04 | |
| | 20 | 1.30 | 1.20 | 1.13 | 1.07 | 1.03 | 1.00 | 0.97 | 0.95 | 0.93 | 0.91 |
| | 30 | 1.14 | 1.05 | 0.99 | 0.94 | 0.91 | 0.88 | 0.85 | 0.83 | 0.82 | 0.80 |
| | 40 | 0.98 | 0.91 | 0.85 | 0.81 | 0.78 | 0.76 | 0.73 | 0.72 | 0.70 | 0.69 |
| | 50 | 0.83 | 0.76 | 0.72 | 0.68 | 0.66 | 0.63 | 0.62 | 0.60 | 0.59 | 0.58 |
| | 60 | 0.67 | 0.62 | 0.58 | 0.55 | 0.53 | 0.51 | 0.50 | 0.49 | 0.48 | 0.47 |
| | 70 | 0.51 | 0.47 | 0.44 | 0.42 | 0.40 | 0.39 | 0.38 | 0.37 | 0.36 | 0.36 |
| 80 | 0.35 | 0.32 | 0.30 | 0.29 | 0.28 | 0.27 | 0.26 | 0.26 | 0.25 | 0.25 | |

Note)

The above table shows values for recommended 65 μ thermal paper, resistance rank B, Rc+rc=0.20, and N=64. In the shaded area, the drive pulse width exceeds the allowable activation pulse width or the activation pulse width exceeds the motor drive frequency. Therefore, use the motor drive frequency shown in the unshaded areas.

3.6.9 Thermistor Resistance

The resistance of the thermistor at the operating temperature T_x (°C) is determined using the following equation (10).

Equation (10):

$$R_X = R_{25} \times \text{EXP} \left\{ B \times \left(\frac{1}{273 + T_x} - \frac{1}{298} \right) \right\}$$

R_x : Resistance at operating temperature T_x (°C)

R_{25} : 15 k Ω \pm 5% (25°C)

B : 3450 k \pm 3%

T_x : Operating temperature (°C)

EXP (A): The Ath power of natural logarithm e (2.71828)

[Rating]

Operating temperature range: -40°C to +125°C

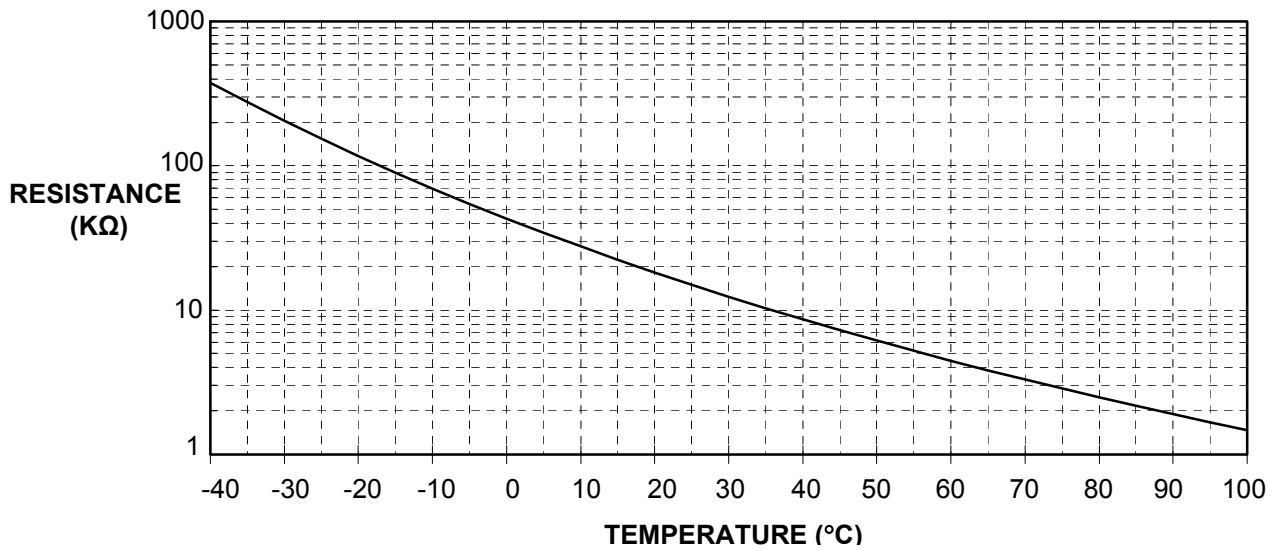


Figure 3-11 Thermistor Resistance vs. Temperature

Table 3-11 Temperature and Thermistor Resistance

| Temperature (°C) | Thermistor Resistance (kΩ) | Temperature (°C) | Thermistor Resistance (kΩ) |
|-----------------------------|---------------------------------------|-----------------------------|---------------------------------------|
| -40 | 375.54 | 40 | 8.63 |
| -35 | 275.40 | 45 | 7.26 |
| -30 | 204.55 | 50 | 6.14 |
| -25 | 153.76 | 55 | 5.22 |
| -20 | 116.89 | 60 | 4.46 |
| -15 | 89.82 | 65 | 3.83 |
| -10 | 69.71 | 70 | 3.30 |
| -5 | 54.61 | 75 | 2.86 |
| 0 | 43.17 | 80 | 2.48 |
| 5 | 34.42 | 85 | 2.17 |
| 10 | 27.66 | 90 | 1.90 |
| 15 | 22.40 | 95 | 1.67 |
| 20 | 18.27 | 100 | 1.47 |
| 25 | 15.00 | | |
| 30 | 12.40 | | |
| 35 | 10.31 | | |

3.6.10 Detecting Abnormal Temperatures of the Thermal Head

To protect the thermal head and to ensure personal safety, abnormal thermal head temperatures must be detected by both hardware and software as follows:

- **Detecting abnormal temperatures by software**

Design software that will deactivate the heat elements if the thermal head thermistor (TH) detects a temperature 80 °C or higher (thermistor resistance $R_{TH} \leq 2.48 \text{ k}\Omega$), and reactivate the heat elements when a temperature of 60 °C or lower ($R_{TH} \geq 4.46 \text{ k}\Omega$) is detected. If the thermal head continues to be activated at a temperature higher than 80 °C, the life of the thermal head may be shortened significantly.

- **Detecting abnormal temperatures by hardware**

If the control unit (CPU) malfunctions, the software for detecting abnormal temperatures may not function properly, resulting in overheating of the thermal head. Overheating of the thermal head may cause damage to the thermal head or injury.

Always use hardware in conjunction with software for detecting abnormal temperatures to ensure personal safety. (If the control unit malfunctions, it may be impossible to prevent damage to the thermal head even if a detection of abnormal temperature is detected by hardware.)

Using a window comparator circuit or similar sensor, design hardware that detects the following abnormal conditions:

- (a) Overheating of the thermal head (approximately 100 °C or higher ($R_{TH} \leq 1.47 \text{ k}\Omega$)).
- (b) Faulty thermistor connection (the thermistor may be open or short-circuited).

If (a) and (b) are detected, immediately deactivate the heat elements. Reactivate the heat elements after the temperature of the thermal head has returned to normal.

3.7 OUT-OF-PAPER SENSOR

The printer has a built-in out-of-paper sensor (reflection type photo interruptor) to detect whether paper is present or not.

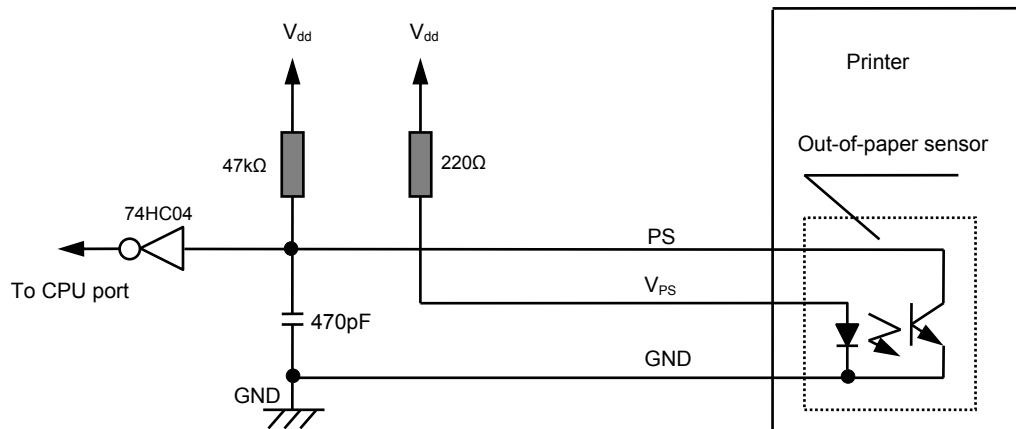
An external circuit should be designed so that it detects output from the Out-of-paper sensor and does not activate the thermal head and motor when there is no paper. Doing not so may cause damage to the thermal head or platen roller or shorten the life of the head significantly. If the motor is driven when it is out-of paper, a load is put on the reduction gear and the life of the gear may be shortened.

Table3-12 shows about the out-of-paper sensor used for this printer.

Table 3-12 Out-of-Paper Sensor

| Item | Specification |
|--------------|-----------------------|
| Type | CNB1001 (Rank S) |
| Manufacturer | Panasonic Corporation |

Figure3-12 shows sample external circuit of the out-of-paper sensor.



*The PS signal is "High" when there is no paper.

Figure 3-12 Sample External Circuit of the Out-of-Paper Sensor

3.8 PLATEN POSITION SENSOR

The printer has a platen position sensor to detect whether or not the platen block is set. The platen position sensor is a switch type sensor shown in Figure 3-13. The platen position sensor switch is closed when the platen block is set and is open when the platen block is released.

Design the control circuit so that the motor is not driven and the thermal head is not activated when the platen block is open by detecting output of the platen position sensor.

3.8.1 General Specification

Maximum rating: DC30V, 0.5A
Connection resistance: 200 mΩ or less

3.8.2 Sample External Circuit

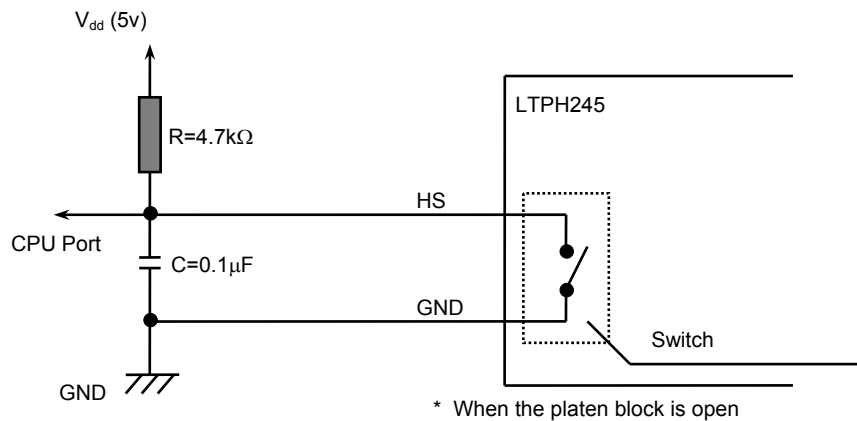


Figure 3-13 Sample External Circuit of the Platen Position Sensor

- Note that there is a time lag between operation of the platen position sensor and completion of pressurization to thermal head.
- To prevent a malfunction due to chattering of the switch, be sure to use the capacitor shown in Figure 3-13.

3.9 Model Code Label

Figure 3-14 shows that the printer is the LTPH245D-C384-E which is made in September 2004. See **Figure 7-1** LTP1245D-C384-E Appearance and Dimensions for labeling position.

- (1) Manufactured year: 2004
- (2) Model code: LTP1245D-C384-E
- (3) Manufactured month: September (X: October, Y: November, Z: December)

| | | | | | | | | | | | | | | |
|---|---|---|---|---|---|---|---|---|---|---|---|---|---|---|
| 1 | 2 | 3 | ● | 5 | 6 | 7 | 8 | 9 | 0 | | | | | |
| L | T | P | H | 2 | 4 | 5 | D | - | C | 3 | 8 | 4 | - | E |
| 1 | 2 | 3 | 4 | 5 | 6 | 7 | 8 | ● | X | Y | Z | | | |

Figure 3-14 Model Code Label

CHAPTER 4

CONNECTING EXTERNAL CIRCUITS

The printer has a FFC (Flexible Flat Cable) type connector and normal type connector (model No.51021-0900) made by Molex Co., Ltd. to connect to the external circuits.

Use the recommended connectors listed in **Table 4-1** to connect the printer firmly to the external circuits.

Table 4-1 Recommended Connectors

| No. | External Circuit Functions | Number of Pins | Recommended Connectors (in the external circuit side) |
|-----|---|----------------|---|
| 1 | Thermal head control | 20 | Molex Co., Ltd. 52044-2045 (horizontal type) 52045-2045 (vertical type) 5597-20APB7F (horizontal type) 5597-20CPB7F (vertical type) |
| 2 | Motor control Out-of-paper sensor Platen position detection | 9 | Molex Co., Ltd. 53047-0910 (vertical type) 53048-0910 (horizontal type) 51047-0900 (transmission type) |

4.1 THERMAL HEAD CONTROL TERMINALS

Figure 4-1 shows the terminals configuration of the FFC thermal head control terminals.

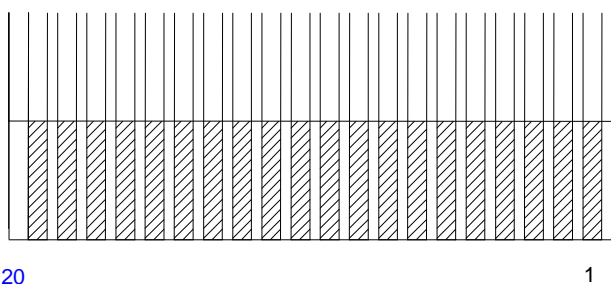


Figure 4-1 Thermal Head Control Terminals

Table 4-2 Thermal Head Control Terminal Assignments

| Terminal Number | Signal Name | Input/Output | Function |
|------------------------|--------------------|---------------------|--|
| 1 | Vp | Input | Thermal head drive voltage |
| 2 | Vp | Input | Thermal head drive voltage |
| 3 | GND | - | GND |
| 4 | GND | - | GND |
| 5 | GND | - | GND |
| 6 | DAT | Input | Print data input (serial input) |
| 7 | CLK | Input | Synchronizing signal for print data transfer |
| 8 | LATCH | Input | Print data latch (memory storage) |
| 9 | DST6 | Input | Thermal head print activation instruction signal |
| 10 | DST5 | Input | Thermal head print activation instruction signal |
| 11 | DST4 | Input | Thermal head print activation instruction signal |
| 12 | DST3 | Input | Thermal head print activation instruction signal |
| 13 | DST2 | Input | Thermal head print activation instruction signal |
| 14 | DST1 | Input | Thermal head print activation instruction signal |
| 15 | TH | - | Thermistor |
| 16 | Vdd | Input | Logic power supply (5V) |
| 17 | GND | - | GND |
| 18 | GND | - | GND |
| 19 | Vp | Input | Thermal head drive voltage |
| 20 | Vp | Input | Thermal head drive voltage |

4.2 MOTOR AND SENSOR TERMINALS

Figure 4-2 shows the terminals of the motor control, out-of-paper sensor and platen position sensor.

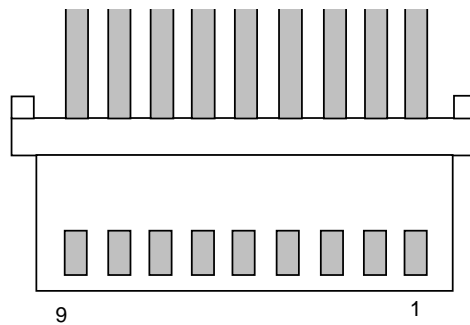


Figure 4-2 Motor and Sensor Terminals

Table 4-3 Motor and Sensor Terminals Assignments

| Terminal Number | Signal Name | Function |
|-----------------|-------------|--|
| 1 | A | Motor drive signal |
| 2 | \bar{A} | Motor drive signal |
| 3 | B | Motor drive signal |
| 4 | \bar{B} | Motor drive signal |
| 5 | V_{PS} | LED anode (Power supply side of the out-of-paper sensor) |
| 6 | PS | Photo-transistor (Collector output of a photo-transistor) |
| 7 | GND | Out-of-paper sensor GND |
| 8 | GND | Platen position sensor GND |
| 9 | HS | Platen position sensor output |

4.3 CAUTION IN CONNECTION

Pay attention to the following during installation of the printer.

- Always remove or install the thermal head controls vertically while holding the reinforcement portion of the FFC.
- Do not bend the FFC. If the FFC must be bent unavoidably, try to do so without removing the reinforcement sheet from the reinforcement portion of the FFC.
- Always remove or install the motor and sensor connector vertically while holding the connector housing.

If the connectors are not connected properly, it may damage the printer, cables or connectors.

CHAPTER 5
DRIVE METHOD

5.1 THERMAL HEAD DRIVE TIMING

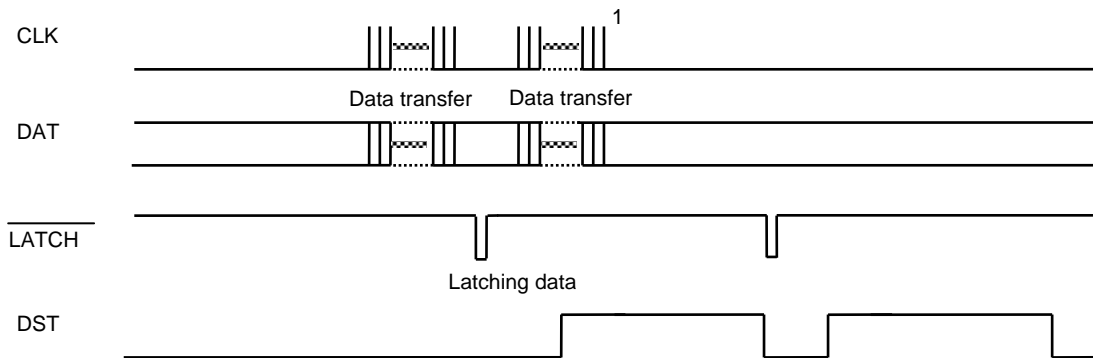
● **Input of print data**

Input of DAT and CLK transfer the print data to the shift register in the serial input. "High" means printing and "Low" means no-printing in DAT. DAT data is read in at the rising edge of the CLK inputs. The transferred line of data is stored in the latch register by turning LATCH to "Low".

● **Input of the head activation pulse**

Setting the DST on "High" drives the heat elements of the thermal head. Select the block to be activated and drive for the time calculated using the formula shown in "**3.6 CONTROLLING THE HEAD ACTIVATION (DST) PULSE WIDTH**", then set the DST to "Low".

Figure 5-1 shows the example of timing chart of the thermal head driving.



1: The print data for next dot line can be transferred immediately after storing the print data into the latch register.

Figure 5-1 Example of Timing Chart of the Thermal Head Driving

5.2 MOTOR DRIVE TIMING

To print, the phase of motors need to be synchronized with that of the thermal head. As example, the print method which divides one dot line to two groups; the block 1,3, and 5 and the block 2,4, and 6, and prints each group data for each step of the motor is described below.

The basic pulse width of the motor drive pulse, T_m , is a value (unit: msec) of the reciprocal number of the driving frequency calculated using equation (1) of "3.3 PAPER FEED CHARACTERISTICS".

- **Pause State**
Transfer the print data to the thermal head according to "5.1 THERMAL HEAD DRIVE TIMING".
- **Start up phase**
Excite the phase which is output just before the motor stops for the time of the start up step shown in Table 3-5.
- **1st line, 1st step**
Drive the motor by one step (1st step). The step time should be the acceleration 1st step time or T_m , whichever is longer.
Set DST for the block 1, 3, and 5 to "High" in synchronization with the motor drive.
After setting DST to "High", set DST to "Low" when the driving time calculated in "3.6 CONTROLLING THE HEAD ACTIVATION (DST) PULSE WIDTH" has passed.
Move to the 2nd step after completion of the 1st step time of the motor and the activation of blocks 1, 3, 5.
- **1st line, 2nd step**
Drive the motor by one step (2nd step). As to how much step time is output, compare T_m with the time that was taken in the previous step.
(1) In case $T_m <$ the time that was taken in the previous step,
the next closest acceleration step time to the previous step time or T_m , which is longer, is output.
(2) in case $T_m >$ the time that was taken in the previous step,
the closest acceleration step time to T_m and the acceleration step time that is larger than T_m , are output.
Set DST for blocks 2, 4, and 6 to "High" in synchronization with the motor drive. After setting DST to "High", set DST to "Low" after completion of the head activation time. Transfer the print data of the next dot line to the thermal head after completion of printing for blocks 2, 4, and 6.
Move to the 2nd dot line after completion of the 2nd step time of the motor and the transfer of print data for the next dot line.

- **2nd line, 1st step**

Drive the motor by one step (3rd step). As to how much step time is output, compare T_m with the time that was taken in the previous step.

(1) in case $T_m <$ the time that was taken in the previous step

the next closest acceleration step time to the previous step time or T_m , which is longer, is output.

(2) in case $T_m >$ the time that was taken in the previous step

the closest acceleration step time to T_m and the acceleration step time that is larger than T_m , are output.

Activate blocks 1, 3, and 5 in the same manner as the 1st line.

- **2nd line, 2nd step**

Drive the motor by one step (4th step). As to how much step time is output, compare T_m with the time that was taken in the previous step.

(1) in case $T_m <$ the time that was taken in the previous step

the next closest acceleration step time to the previous step time or T_m , which is longer, is output.

(2) in case $T_m >$ the time that was taken in the previous step

the closest acceleration step time to T_m and the acceleration step time that is larger than T_m , are output.

Activate blocks 2, 4, and 6 in the same manner as the 1st dot line, then transfer the next dot line data.

Print each line in the same manner continuously.

Figure 5-2 shows an example of the motor drive timing chart.

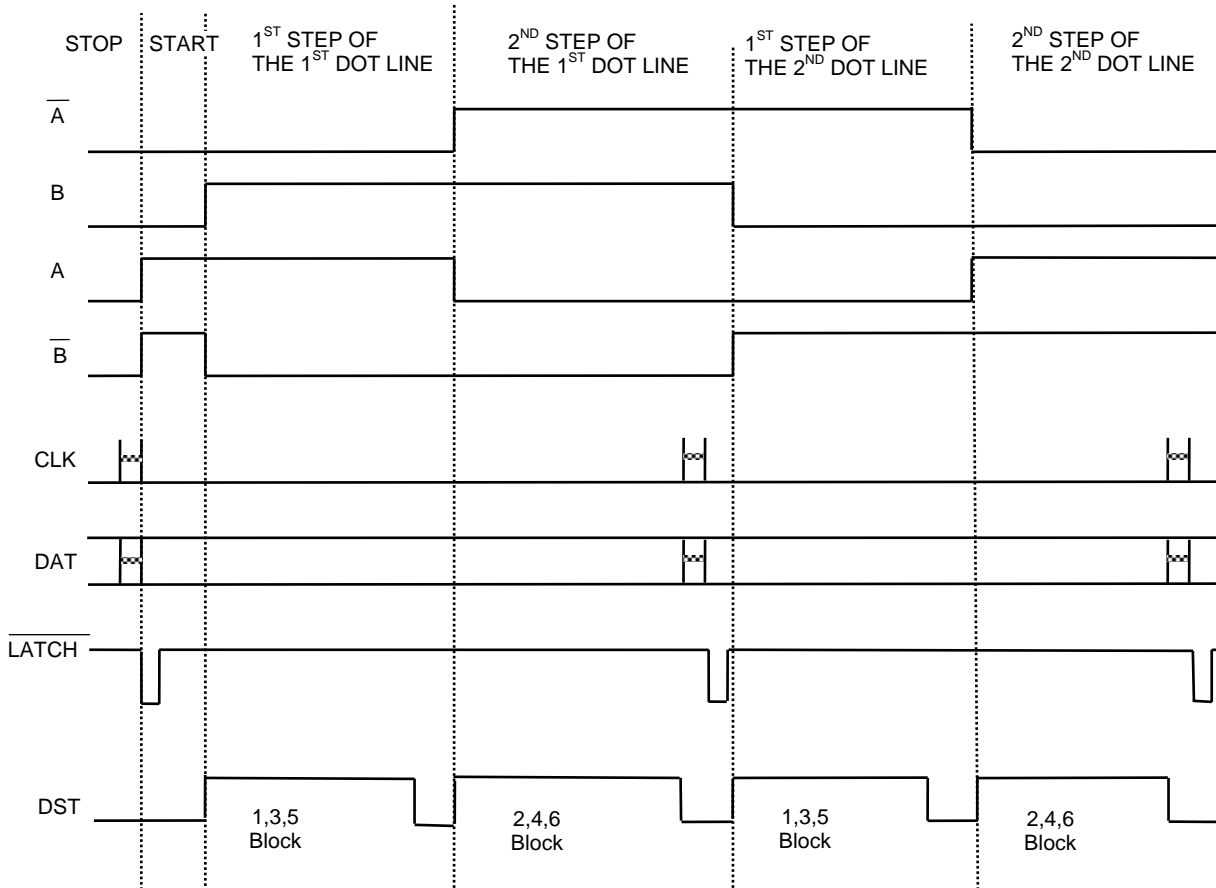


Figure 5-2 Example of Motor Drive Timing Chart

CHAPTER 6
HOUSING DESIGN GUIDE

6.1 SECURING THE PRINTER

The main body of the printer and platen must be secured to the outer case separately with screws.

6.1.1 Printer Mounting Method

Secure the printer in the 3 locations shown below (a,b,c). Holes A and B are used for positioning the main body of the printer.

See "**CHAPTER 7 APPEARANCE AND DIMENSIONS**" for locations and dimensions.

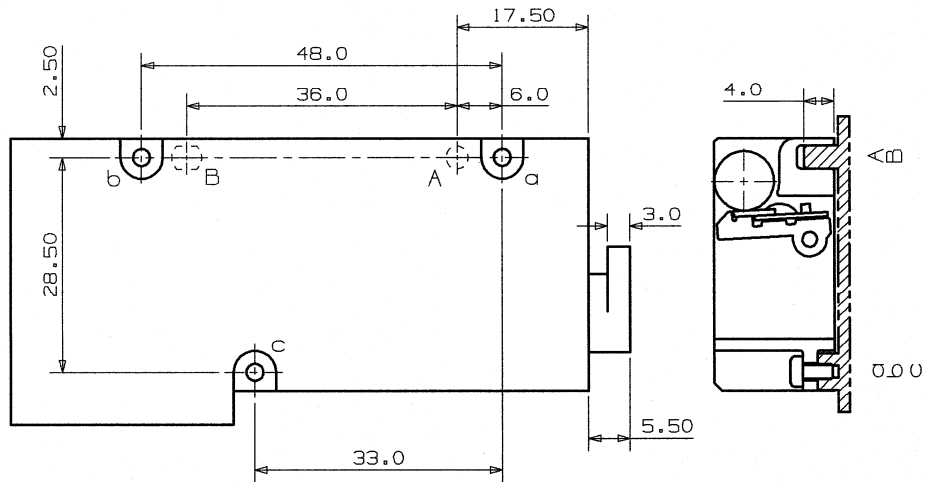


Figure 6-1 How to Secure the Printer

Recommended Screws

The recommended mounting screws are as follows:

- 1) Screw: M2.0 cross-recessed pan head machine screw
- 2) Screw: Pan head tapping screw 2.0 to secure resinated material

6.1.2 Mounting Platen Block

Secure the platen block in the 2 locations shown below (a, b). Holes A and B are used for positioning the outer case. Perform positioning of the outer case using A and B.

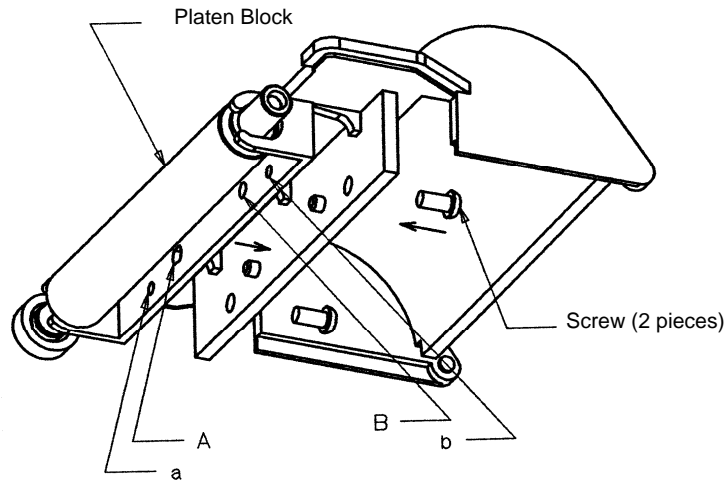


Figure 6-2 How to Secure the Platen Block

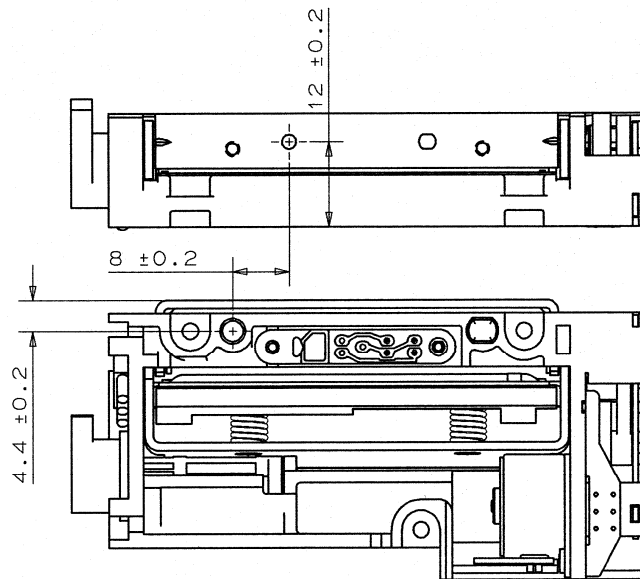
Recommended Screws

The recommended mounting screws are as follows:

Screw: M2.0 cross-recessed pan head machine screw

The nominal size of the screw should be the wall thickness of the outer case plus 2 mm. To secure the platen block to the wall of a thickness of 2 mm, screws of the nominal size of 4 mm should be used.

The positioning of the platen roller is performed on the printer mechanism side. However, if the platen block is not mounted correctly, the platen roller may be pulled by the outer case. This may cause failure when installing and detaching the platen as well as printing failures. Therefore, mount the platen block correctly.



Unit: mm

Figure 6-3 Mounting Position of the Platen Block

Ensure proper clearance for fitting of the frame unit that fastens the printer and the frame unit that fastens the platen block. Also make sure that excessive stress is not applied to the printer mounted in the equipment.

6.1.3 Precautions for Securing the Printer

Pay attention to the following when designing the case and securing the printer. Failure to follow these instructions may cause deterioration of print quality, paper skew, paper jam, noise or damage.

- Prevent excessive force or torsion when securing the printer.
- Remove the platen block before securing the printer.
- The bracket for the platen block is made of aluminum. Secure it with an appropriate torque.
- Design the case so that the thermal head control terminals can move 1 to 2 mm to compensate for the head moving.
- If the FFC for the thermal head control touches the bottom of the outer case, the FFC will disconnect and/or short-circuit. Leave a space of approximately 0.3 mm between the bottom of the outer case where the FFC passes through and the bottom of the printer mechanism.
- Secure the platen block to the printer correctly as shown in Figure 7-1. The platen block should not be used in any other way than as described in Figure 7-1.
- The shipping inspection of the main body of the printer and platen block is performed in combination of them packed for the shipping. Therefore, do not change the combination of the main body of the printer and platen block when installing them to the outer case.

6.2 LAYOUT OF PRINTER AND PAPER

- The printer can be laid out as shown in **Figure 6-4** according to the loading direction of the paper.
- Design the paper outlet with an angle of 60 to 90°.
- Design the paper inlet with an angle of 90° or more.

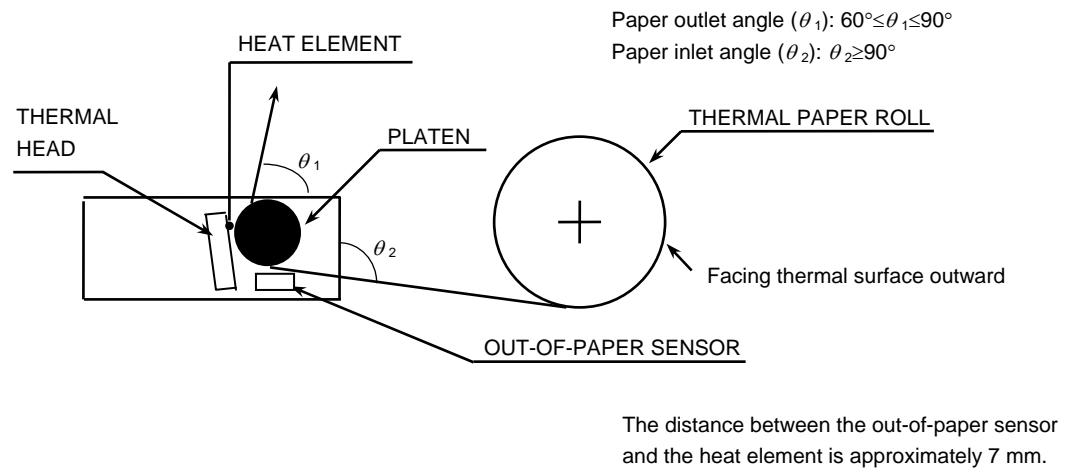


Figure 6-4 Paper Path

6.3 WHERE TO MOUNT THE PAPER HOLDER

When determining the layout of the paper holder, note the following:

- Hold the paper so that the paper is straight to the paper inlet without any horizontal shifting, and the center axis of the paper roll is parallel with the printer.
- Keep the paper feed force to 0.49N (50 gf) or less.
- Mount the platen block to the paper holder cover.
For the rotation support point, see **CHAPTER 7 APPEARANCE AND DIMENSIONS**.

6.4 SETTING THE PAPER

Follow these precautions when setting the paper.

- Be sure to use the recommended paper described in this technical reference.
- Place the paper roll into the holder facing the thermal surface outward. Also, do not use paper with edges that are pasted or have turnups at the start of the roll. If they need to be used unavoidably, replace with new paper roll as soon as possible before the entire roll is used up.
- Keep the paper feed force to 0.49N (50 gf) or less.

6.5 POSITIONING THE PAPER CUTTER

Design the position of the paper cutter so that the paper cutter is within the recommended range as shown below.

If the distance between the edge of the paper cutter and position reference hole A of the printer is less than 6.9 mm, the paper cutter may interfere with the platen block when it is opened or closed. If the distance between them is more than 7.5 mm, the paper is not pressed against the cutter edge and it is difficult to cut. Therefore, position the paper cutter so the distance between the edge of the paper cutter and the position reference hole A of the printer is from 6.9 to 7.5 mm.

Figure 6-5 shows the recommended position

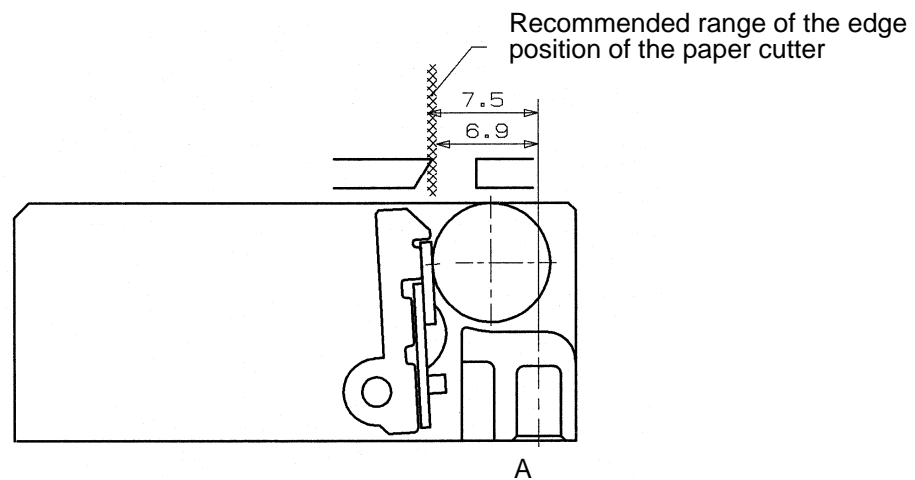


Figure 6-5 Paper Cutter Mounting Position

- Use a cutter with a sharp edge so that paper can be cut easily without excessive force.

Figure 6-6 shows the shape of the blade of the paper cutter that should be used.

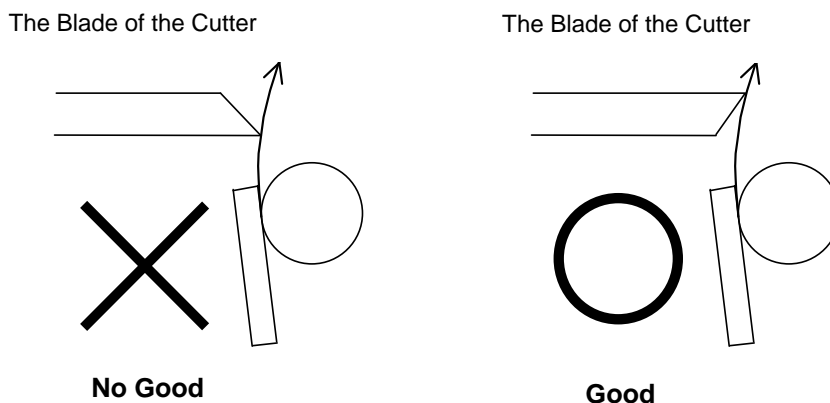
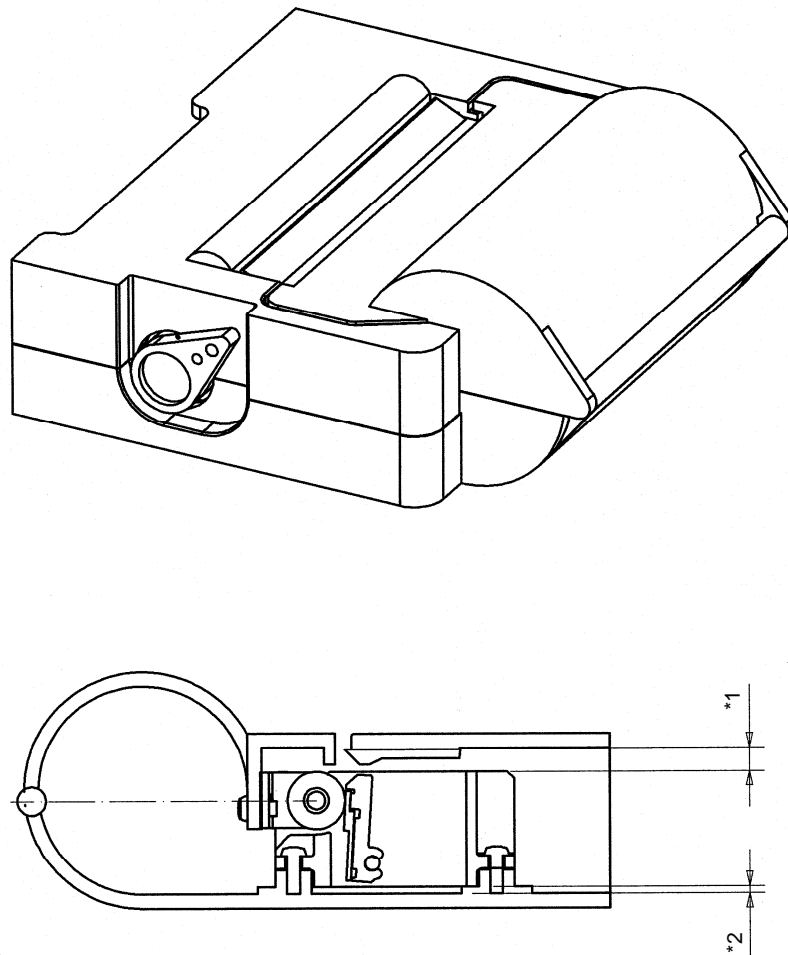


Figure 6-6 The Blade of the Paper Cutter

In the left cutter of **Figure 6-6**, the cut paper may be caught by the blade of the cutter and rolled inside. Therefore, use a cutter with the shape of a blade that will not catch the cut paper as in **Figure 6-6** to the right.

6.6 OUTER CASE STRUCTURE

Figure 6-7 shows a sample of an outer case.



*1 Provide a gap of a few mm between the printer and the outer case to allow for cooling of the thermal head.

*2 When the FFC contacts bottom of the outer case strongly, disconnection and short circuit may occur. Provide a gap between the printer main body and the outer case.

Figure 6-7 Sample Outer Case Structure

CHAPTER 7

APPEARANCE AND DIMENSIONS

Figure 7-1 and **7-2** show the appearance and external dimensions of the LTPH245D-C384-E.

Figure 7-3 and **7-4** show the appearance and external dimensions of the LTPH245E-C384-E.

Figure 7-5 shows the appearance and dimensions of the platen block used for both LTPH245D-C384-E and LTPH245E-C384-E.

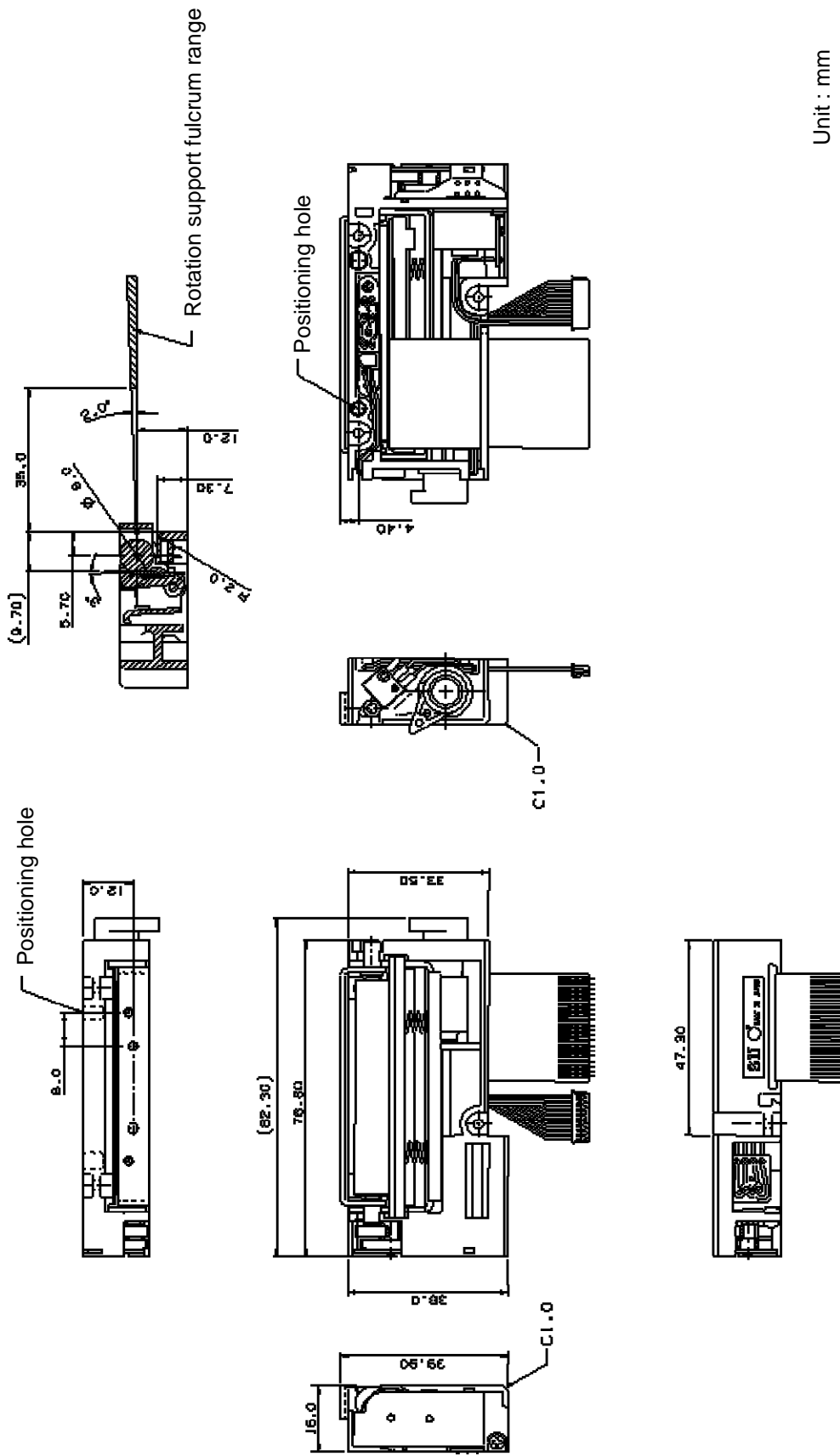
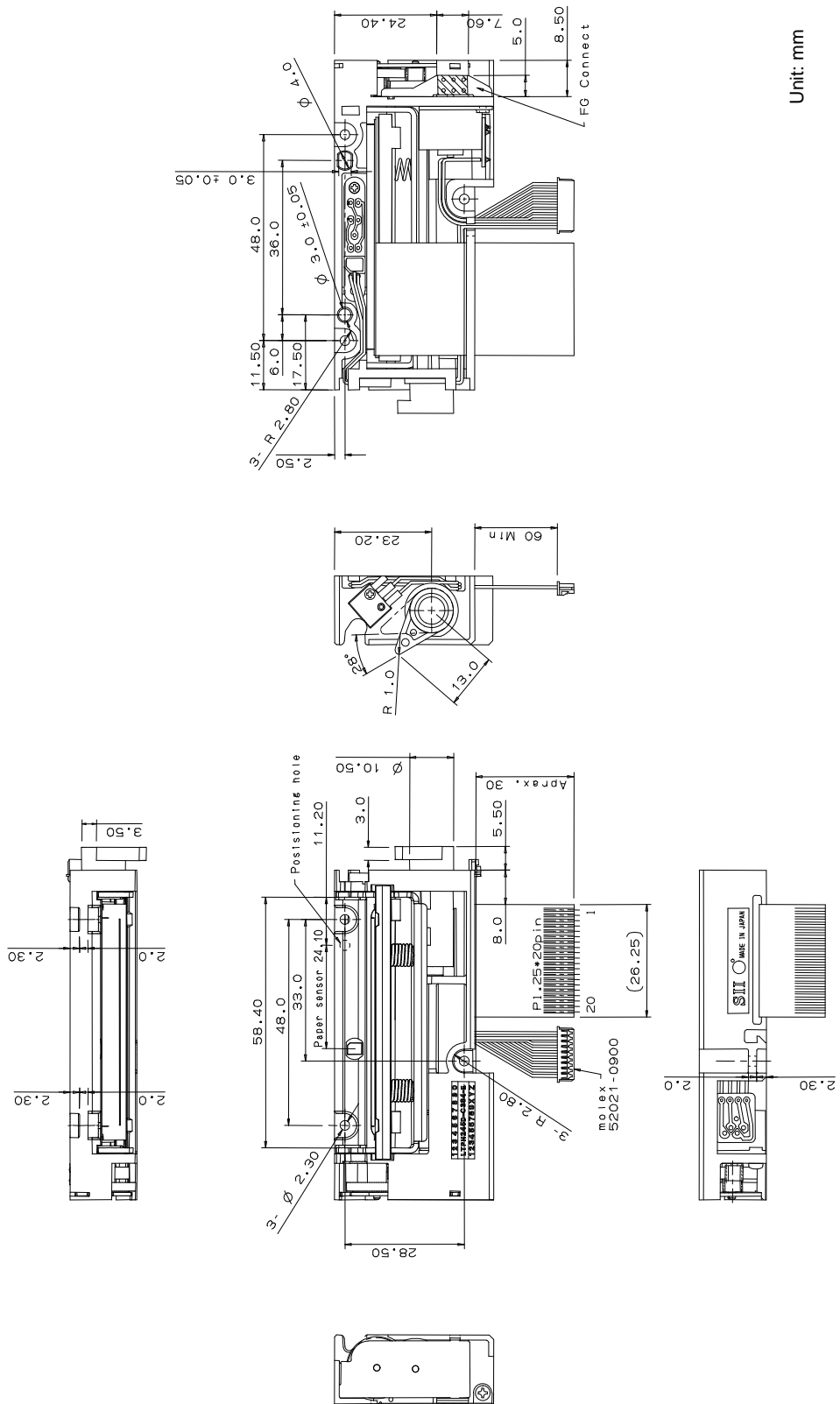
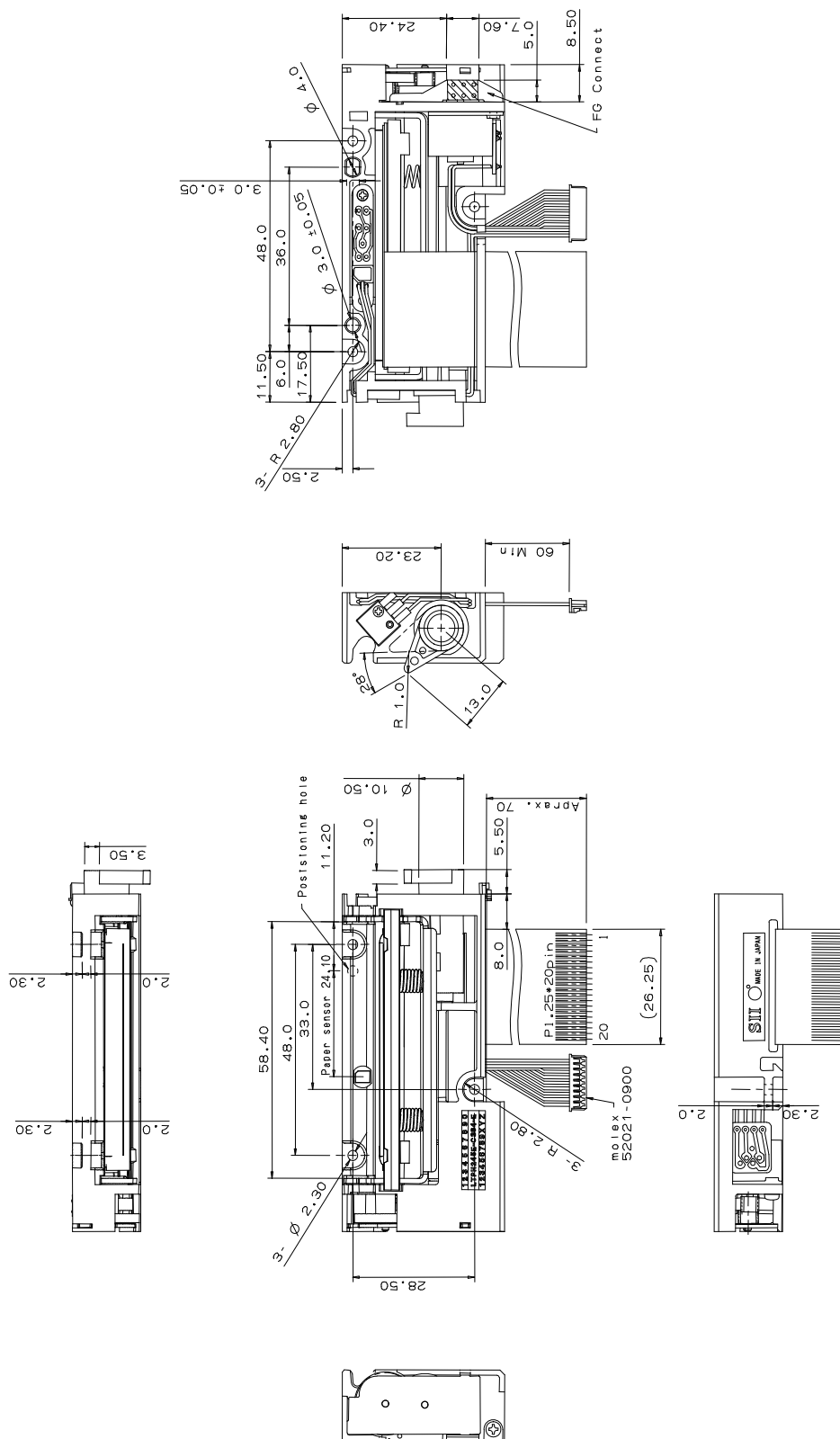


Figure7-1 Appearance and Dimensions (LTPH245D-C384-E)



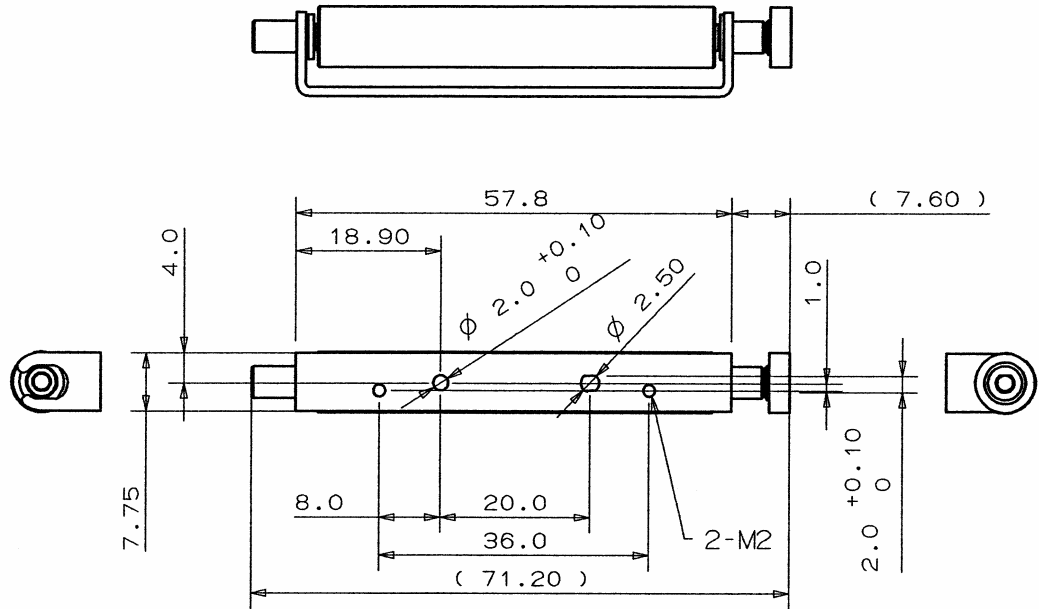
Unit: mm

Figure7-2 Printer Main Body Appearance and Dimensions (LTPH245D-C384-E)



Unit : mm

Figure7-4 Printer Main Body Appearance and Dimensions (LTPH245E-C384-E)



Unit: mm

Figure7-5 Platen Block Appearance and Dimensions

CHAPTER 8
LOADING/UNLOADING PAPER AND CLEANING

8.1 LOADING/UNLOADING PAPER PRECAUTIONS

1) Loading paper

- Turn the release lever in the direction of the arrow shown in **Figure 8-1**.

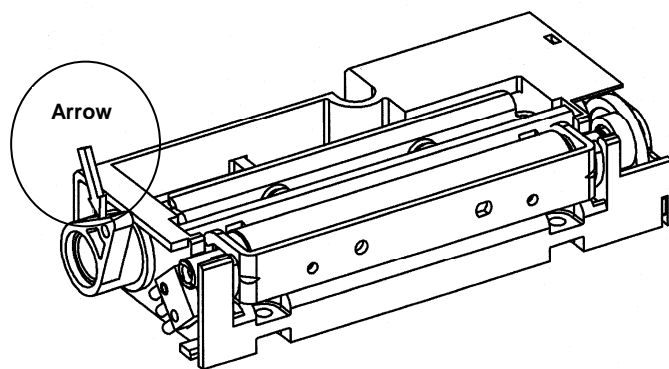


Figure 8-1 Loading Paper (1)

- After confirming that the platen block has separated from the printer mechanism, lift the platen block up.

- Insert the paper vertically into the printer. (See **Figure 8-2**). Pull the paper through the paper outlet and replace the platen block into the printer mechanism. Make sure that the platen block locks with a click.
- Opening the platen block exposes the reduction gear which can be damaged if touched. Therefore, take care not to damage the gear when inserting the paper. Moreover, make sure there is no foreign matter on the gear.

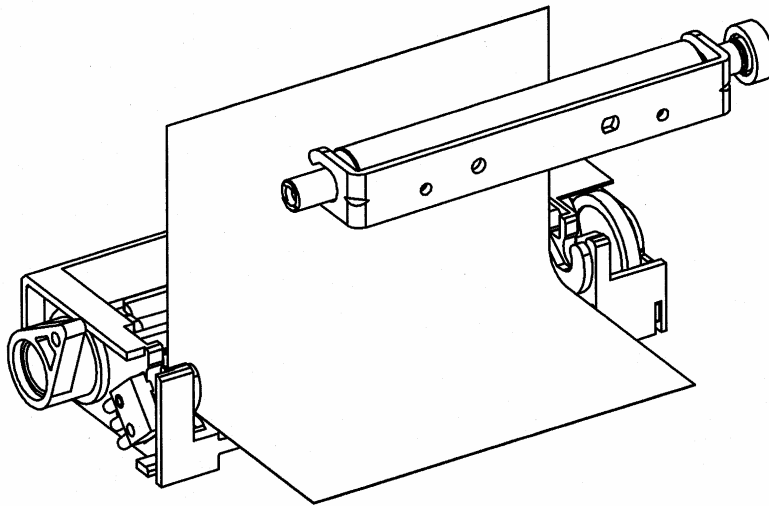


Figure 8-2 Loading Paper (2)

- The out-of-paper sensor may not operate properly if covered with foreign matter. Therefore, if you find foreign matter on the sensor, remove it and clean the sensor.
- If the paper skews, feed the paper so that it returns to normal, first, then take it out and set it again.

2) Unloading paper

- Open the platen block and remove the paper.

3) Removing jammed paper

- Open the platen block and remove any jammed paper.
- Do not pull the paper by force.

8.2 CLEANING PROCEDURE AND PRECAUTIONS

When foreign matter adheres between the thermal head and platen roller, it may cause print failure. If accumulation of paper powder or foreign matter is seen, or print quality seems to have deteriorated, clean the thermal head and platen roller.

8.2.1 PRECAUTIONS

- 1) Do not clean the printer immediately after printing because thermal head and its periphery are hot during and after printing.
- 2) Do not use sandpaper, cutter knives etc. when cleaning. They will damage the heat elements.

8.2.2 PROCEDURE

- 1) Turn the release lever in the direction of the arrow shown in **Figure 8-1**. After confirming that the platen block has separated from the printer mechanism, lift the platen block up.
- 2) Clean the heat elements and platen roller surface using alcohol and a cotton swab.
- 3) Wait until the alcohol dries and close the platen block.

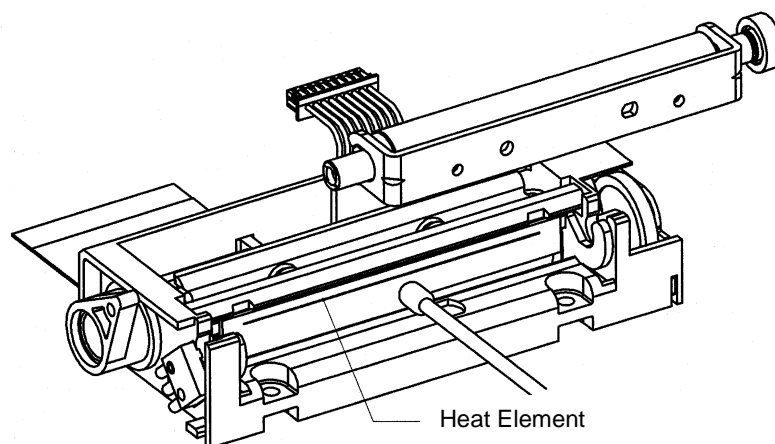


Figure 8-3 Cleaning Procedure

X-ON Electronics

Largest Supplier of Electrical and Electronic Components

Click to view similar products for [Printers category](#):

Click to view products by [Seiko manufacturer](#):

Other Similar products are found below :

[897252-000](#) [CU0620-000](#) [F39639-000](#) [FTP-648MCL570](#) [PTMBL1912A](#) [PWC-L07A1-W1-E](#) [DPU-V445-10B-E](#) [D-SCE-12-50-S1-4](#) [D-SCE-3.2-50-S1-4](#) [IF2302-01UK-E](#) [IF9001-01P-E](#) [IFC-001K](#) [2000P-RIBBON-4AG-MED](#) [206868-000](#) [OP-LH200A-E](#) [LB1256-E](#) [LM-1/4-TUBE-WE](#) [308-LE](#) [SMS-V-19-9](#) [ACUH205A-E](#) [1813390001](#) [FTP-040P001](#) [FTP-628CU601R](#) [PW-C0725-W2-U](#) [HANDHELD-TMS-3.9-9](#) [3045950001](#) [351013-000](#) [RH-48-00-E](#) [4775630001](#) [TSK-508406-2.5CS8982](#) [TTC-PRINTER-PRINthead-300](#) [HW-762254-5-9](#) [IF2301-01B](#) [IFC-001K-E](#) [IFH001-01B](#) [LM-1/2-TUBE-WE](#) [DPU-D3-01A-E](#) [D-SCE-12-50-9](#) [D-SCE-4.8-50-4](#) [094514-000](#) [E64127-000](#) [ED4839-000](#) [T200-IDENT-DR4-DRIVEROLLER](#) [CP3963-000](#) [2000P-RIBBON-4AG-NAR](#) [2000P-RIBBON-WH-MED](#) [U001023895X1](#) [FTP-624Y002](#) [ED4098-000](#) [NC-LSC05](#)