

Power Modules: Variants Explanation



FORMS-1014 / Rev. 06

Content

1. General Information

2. MiniSKiiP® Lid Options

3. Thermal Interface Materials

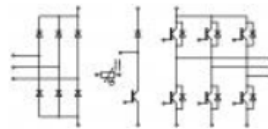
FORMS-1014 / Rev. 06

Variants Explanation: General Information

Online Shop Variants:

Customers can choose from a range of product variants regarding:

- Pressure lid type for MiniSKiiP® modules: standard or slim lids
- Thermal Interface Materials (TIM): thermal paste or Phase Change Material (PCM)



SKiiP 11NAB12T4V1

MiniSKiiP® 1

V_{ces} 1200 V

I_{cnom} 8 A

Part Number: 25231580

Net unit weight: 0.03 kg

Tariff Number: 85412900

Country of Origin: Germany

Manufacturer: SEMIKRON

[datasheet](#)

[More about variants](#)

Choose variant

- M20: item+Std. Lid
- M10: item+Slim Lid
- M25: item +Std. Lid+HpTp
- M21: item+Std. Lid+P12
- M15: item +Slim Lid+HpTp
- M11: item+Slim Lid+P12
- M00: module only
- M01: item+P12

Variant Code	Module only	Module + Slim Lid	Module + Standard Lid
No TIM applied	M00	M10	M20
Paste P12	M01	M11	M21
Paste HpTp	M05	M15	M25
PCM HALA P8	M04	-	-

FORMS-1014 / Rev. 06

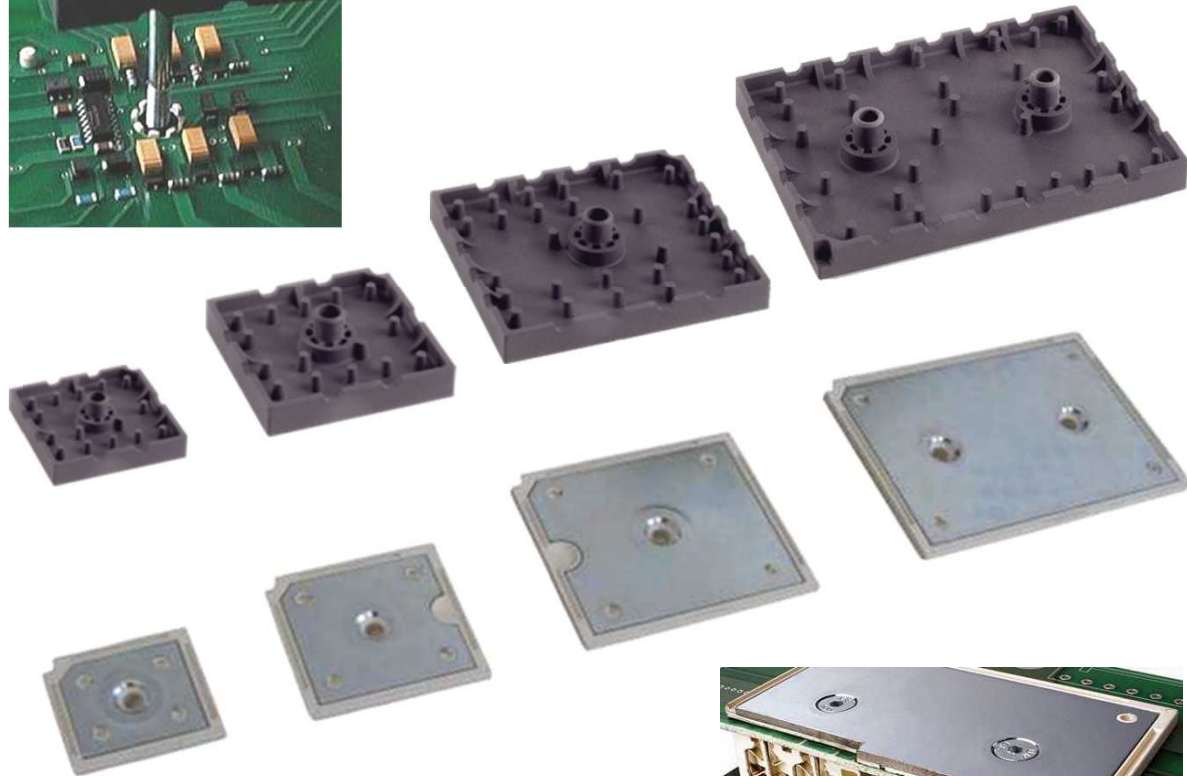
Variants Explanation: MiniSKiiP® Lid Options

- Standard Lid:

Lid height of 6.5 mm.
Ample space for SMD components (max. height 3.5 mm)



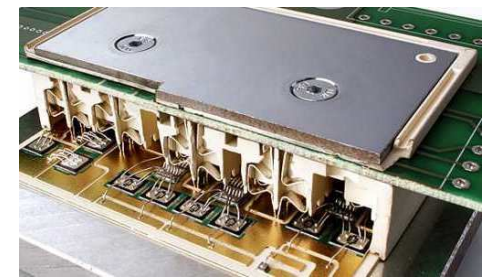
Standard Lid 6.5 mm



- Slim Lid:

Lid height of 2.8 mm.
Slim solution for minimum height requirement

Slim Lid 2.8 mm



Variants Explanation: Thermal Interface Materials

- With P12:

For a fast and easy assembly of the module on the heat sink with an optimum thickness of thermal paste layer.

- With HpTp:

Improved thermal paste with a better performance

$$\lambda_{\text{paste}} = 2.5 \text{ W/(mK)}$$

- With HALA P8:

PCM with excellent conductive property which is solid at room temperature and silicone free.



X-ON Electronics

Largest Supplier of Electrical and Electronic Components

Click to view similar products for [IGBT Modules category](#):

Click to view products by [Semikron manufacturer](#):

Other Similar products are found below :

[F3L100R07W2E3_B11](#) [F3L15R12W2H3_B27](#) [F3L400R07ME4_B22](#) [F3L400R12PT4_B26](#) [F4-100R12KS4](#) [F4-50R07W2H3_B51](#) [F4-75R12KS4_B11](#) [FB15R06W1E3](#) [FB20R06W1E3_B11](#) [FD1000R33HE3-K](#) [FD300R06KE3](#) [FD300R12KE3](#) [FD300R12KS4_B5](#) [FD400R12KE3](#) [FD400R33KF2C-K](#) [FD401R17KF6C_B2](#) [FD-DF80R12W1H3_B52](#) [FF100R12KS4](#) [FF1200R17KE3_B2](#) [FF150R12KE3G](#) [FF200R06KE3](#) [FF200R06YE3](#) [FF200R12KT3](#) [FF200R12KT3_E](#) [FF200R12KT4](#) [FF200R17KE3](#) [FF300R06KE3_B2](#) [FF300R12KE4_E](#) [FF300R12KS4HOSA1](#) [FF300R12ME4_B11](#) [FF300R12MS4](#) [FF300R17ME4](#) [FF450R12ME4P](#) [FF450R17IE4](#) [FF600R12IE4V](#) [FF600R12IP4V](#) [FF800R17KE3](#) [FF800R17KP4_B2](#) [FF900R12IE4V](#) [MIXA30W1200TED](#) [MIXA450PF1200TSF](#) [FP06R12W1T4_B3](#) [FP100R07N3E4](#) [FP100R07N3E4_B11](#) [FP10R06W1E3_B11](#) [FP10R12W1T4_B11](#) [FP10R12YT3](#) [FP10R12YT3_B4](#) [FP150R07N3E4](#) [FP15R12KT3](#)