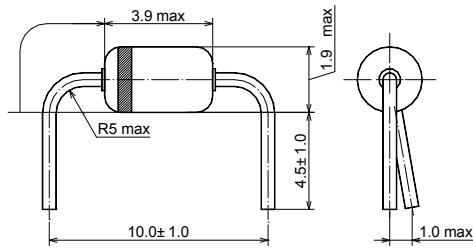


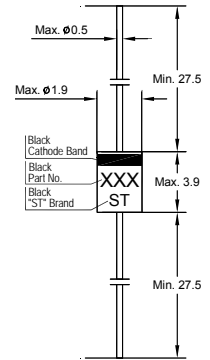
# ST60P, ST60S

## Silicon Schottky Barrier Diode

Characteristics equivalent to  
1N60P and 1N60S



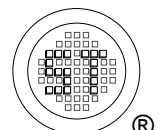
**Glass case DO-35-1  
Dimensions in mm**



**Glass Case DO-35  
Dimensions in mm**

### Absolute Maximum Ratings ( $T_a = 25^\circ\text{C}$ )

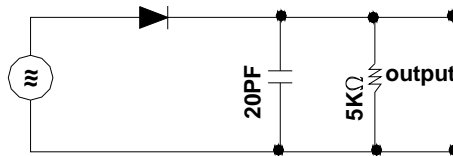
Parameter	Symbol	Value	Unit
Peak Reverse Voltage	$V_{RM}$	45	V
Reverse Voltage	$V_R$	20	V
Average Rectified Output Current	$I_O$	50	mA
Peak Forward Current	$I_{FM}$	150	mA
Surge Forward Current	$I_{surge}$	500	mA
Junction Temperature	$T_j$	175	$^\circ\text{C}$
Storage Temperature Range	$T_{Stg}$	- 55 to + 175	$^\circ\text{C}$



# ST60P, ST60S

## Characteristics at $T_a = 25^\circ\text{C}$

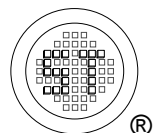
Parameter	Symbol	Min.	Max.	Unit
Forward Current at $V_F = 1\text{ V}$	$I_F$	4	-	mA
Forward Voltage at $I_F = 1\text{ mA}$ at $I_F = 5\text{ mA}$	$V_F$	- -	0.5 0.7	V
Reverse Current at $V_R = 10\text{ V}$	$I_R$	- -	50 100	$\mu\text{A}$
Rectification Efficiency at $V_i = 2\text{ Vrms}$ , $R = 5\text{ K}\Omega$ , $C = 20\text{ pF}$ , $f = 40\text{ MHz}$	$\eta$	55	-	%



Input 2Vrms

Rectification Efficiency Measurement Circuit

Disclaimer: Our company reserve the right to make modifications, enhancements, improvements, corrections or other changes to improve product design, functions and reliability, anytime without notice. Semtech Electronics Limited makes no warranties, representations or warranties regarding the suitability of its products for any particular purpose, and does not accept any liability arising from the application or use of any product or circuit such as: Apply to medical, military, aircraft, space or life support equipment and expressly waive any and all liability, including but not limited to special, consequential or collateral damage.



## X-ON Electronics

Largest Supplier of Electrical and Electronic Components

*Click to view similar products for [Schottky Diodes & Rectifiers](#) category:*

*Click to view products by [Semtech](#) manufacturer:*

Other Similar products are found below :

[MA4E2039](#) [MMBD301M3T5G](#) [RB160M-50TR](#) [D83C](#) [BAS16E6433HTMA1](#) [BAS 3010S-02LRH E6327](#) [BAT 54-02LRH E6327](#)  
[NRVBAF360T3G](#) [NSR05F40QNXT5G](#) [NTE555](#) [JANS1N6640](#) [SS3003CH-TL-E](#) [GA01SHT18](#) [CRS10I30A\(TE85L,QM](#) [MBRA140TRPBF](#)  
[MBRB30H30CT-1G](#) [BAT 15-04R E6152](#) [JANTX1N5712-1](#) [DMJ3940-000](#) [SB007-03C-TB-E](#) [NRVBB20100CTT4G](#) [NRVBM120LT1G](#)  
[NTSB30U100CT-1G](#) [CRG04\(T5L,TEMQ\)](#) [ACDBA1100LR-HF](#) [ACDBA1200-HF](#) [ACDBA240-HF](#) [ACDBA3100-HF](#) [CDBQC0530L-HF](#)  
[ACDBA260LR-HF](#) [ACDBA1100-HF](#) [10BQ015-M3/5BT](#) [NRVBM120ET1G](#) [VSSB410S-M3/5BT](#) [1N5819T-G](#) [PDS1040Q-13](#) [B160BQ-13-F](#)  
[SDM05U20CSP-7](#) [BAS 70-07 E6433](#) [B140S1F-7](#) [HSM560Je3/TR13](#) [DDB2265-000](#) [ZHCS506QTA](#) [HSM190Je3/TR13](#) [B330AF-13](#)  
[ACDBUC0230-HF](#) [SDM1U100S1F-7](#) [MBR10200CTF-G1](#) [CDLL5712](#) [DMF2822-000](#)