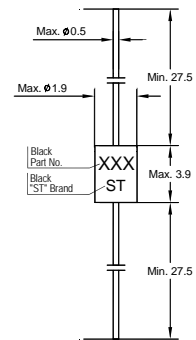


DB3, DB4, DC34

Silicon Bidirectional Trigger Diodes

These diacs are intended for use in thyristor phase control, circuits for lamp-dimming, universal-motor speed controls, and heat controls.



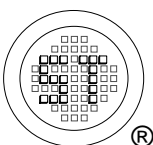
Glass Case DO-35
Dimensions in mm

Absolute Maximum Ratings ($T_a = 25^\circ\text{C}$)

Parameter	Symbol	Value	Unit
Power Dissipation ($T_a = 65^\circ\text{C}$)	P_{tot}	150	mW
Repetitive Peak On-state Current ($t_p = 20 \mu\text{s}$, $f = 100 \text{ Hz}$)	I_{TRM}	2	A
Operating Junction and Storage Temperature Range	T_j, T_{stg}	- 40 to + 125	$^\circ\text{C}$

Characteristics at $T_a = 25^\circ\text{C}$

Parameter	Symbol	Min.	Max.	Unit
Breakover Voltage at $C = 22 \text{ nF}$, see diagram 1	DB3	28	36	V
	DC34	30	38	
	DB4	35	45	
Breakover Voltage Symmetry at $C = 22 \text{ nF}$, see diagram 1	$[+V_{\text{BO}} - -V_{\text{BO}}]$	-	3	V
Dynamic Breakover Voltage at $\Delta I = [I_{\text{BO}} \text{ to } I_{\text{F}} = 10 \text{ mA}]$	$ \Delta V \pm $	5	-	V
Output Voltage See diagram 2	V_{O}	5	-	V
Breakover Current at $C = 22 \text{ nF}$	I_{BO}	-	50	μA
Leakage Current at $V_{\text{B}} = 0.5 V_{\text{BO max}}$	I_{B}	-	10	μA
Rise Time See diagram 3	t_{r}	-	2	μs



SEMTECH ELECTRONICS LTD.
Subsidiary of Sino-Tech International (BVI) Limited



Dated : 08/08/2009

Diagram 1: Current-voltage characteristics

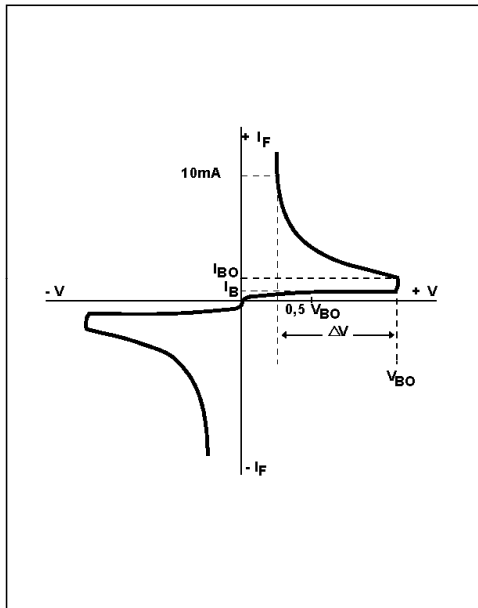


Diagram 2: Test circuit for output voltage

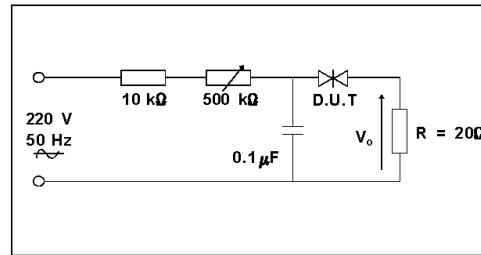


Diagram 3: Test circuit see diagram 2. Adjust R for $I_p=0.5A$

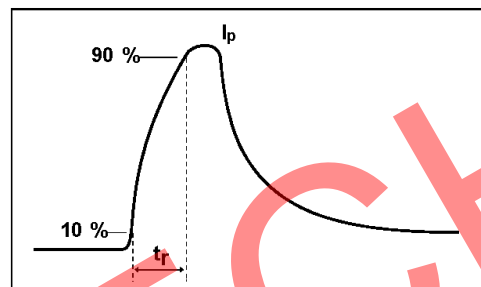


Fig. 1: Power dissipation versus ambient temperature (maximum values)

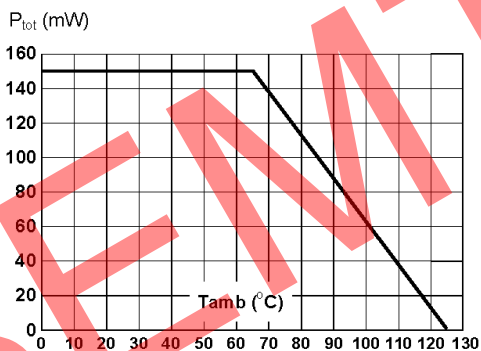


Fig. 2: Relative variation of V_{BO} versus junction temperature (typical values)

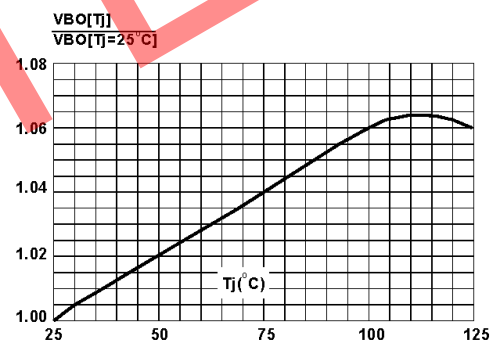
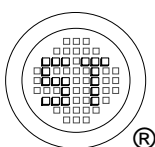
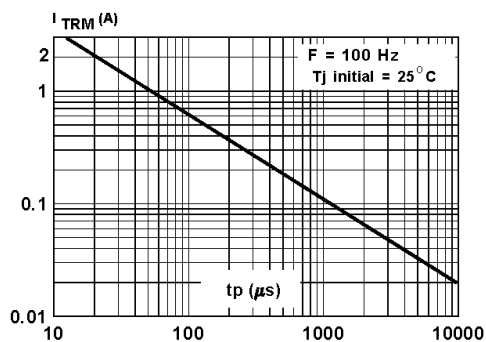


Fig. 3: Peak pulse current versus pulse duration (maximum values)



X-ON Electronics

Largest Supplier of Electrical and Electronic Components

Click to view similar products for [Diacs](#) category:

Click to view products by [Semtech](#) manufacturer:

Other Similar products are found below :

[DB3-TP](#) [DLDB3](#) [DLDB4](#) [NTE6407](#) [DB3TG](#) [DB3](#) [DB4](#) [DB4](#) [NTE6412](#) [DB4](#) [NTE6408](#) [NTE6411](#) [BEP0080SB](#) [BEP0300SC](#) [BEP3500SB](#)
[TISP4350H3BJR-S](#) [2SC2983](#) [DB3](#) [K1050E70](#) [K1100E70](#) [K1200E70](#) [K1400E70](#) [K1500E70](#) [K2000E70](#) [K2200E70](#) [K2200G](#) [K2400G](#)
[P0080EAL](#) [P0080SBLRP](#) [P0720ECLRP1](#) [P1500SALRP](#) [P2600EAL](#) [P2600EBL](#) [P3100SCLRP](#) [P3203ABL](#) [P3500SBLRP](#)
[SDP0240T023G6RP](#) [P4500SCLRP](#) [LLDB3](#) [DB3](#) [DB3](#) [DB3](#) [DB4](#) [SMDB3](#) [TMMDB3](#) [TMMDB3TG](#) [LLDB3](#) [SODDB3T](#) [RHG](#)