

LoRa IOT Starter Kits

User's Guide

WIRELESS, SENSING & TIMING PRODUCTS

Table of contents

| Section | Page |
|--------------------------------------------------|------|
| 1. Goal of this Kit | 3 |
| 2. Contents of the development kit | 3 |
| 3. Getting Started..... | 4 |
| 3.1. Connection to an Ethernet Network | 4 |
| 3.2. Connection using an Ethernet Cable | 6 |
| 4. RaspberryPI software | 9 |
| 4.1. RaspberryPI command line access | 9 |
| 4.2. Access using PuTTY | 10 |
| 4.3. Access using UNIX terminal console | 11 |
| 5. Application Software Locations..... | 12 |
| 6. Starting / Stopping the demon scripts..... | 13 |
| 7. Server MySQL database | 14 |
| 7.1. Cleanup..... | 14 |
| 7.2. MySQL server users | 15 |
| 8. Updates and Upgrades..... | 16 |
| 9. End-devices firmware | 16 |
| 9.1. LoRaMote | 16 |
| 9.2. mbed | 16 |
| 9.3. How-to upgrade the RaspberryPi SD card..... | 16 |
| 10. Ordering Information..... | 17 |
| 11. Troubleshooting..... | 17 |

WIRELESS, SENSING & TIMING PRODUCTS

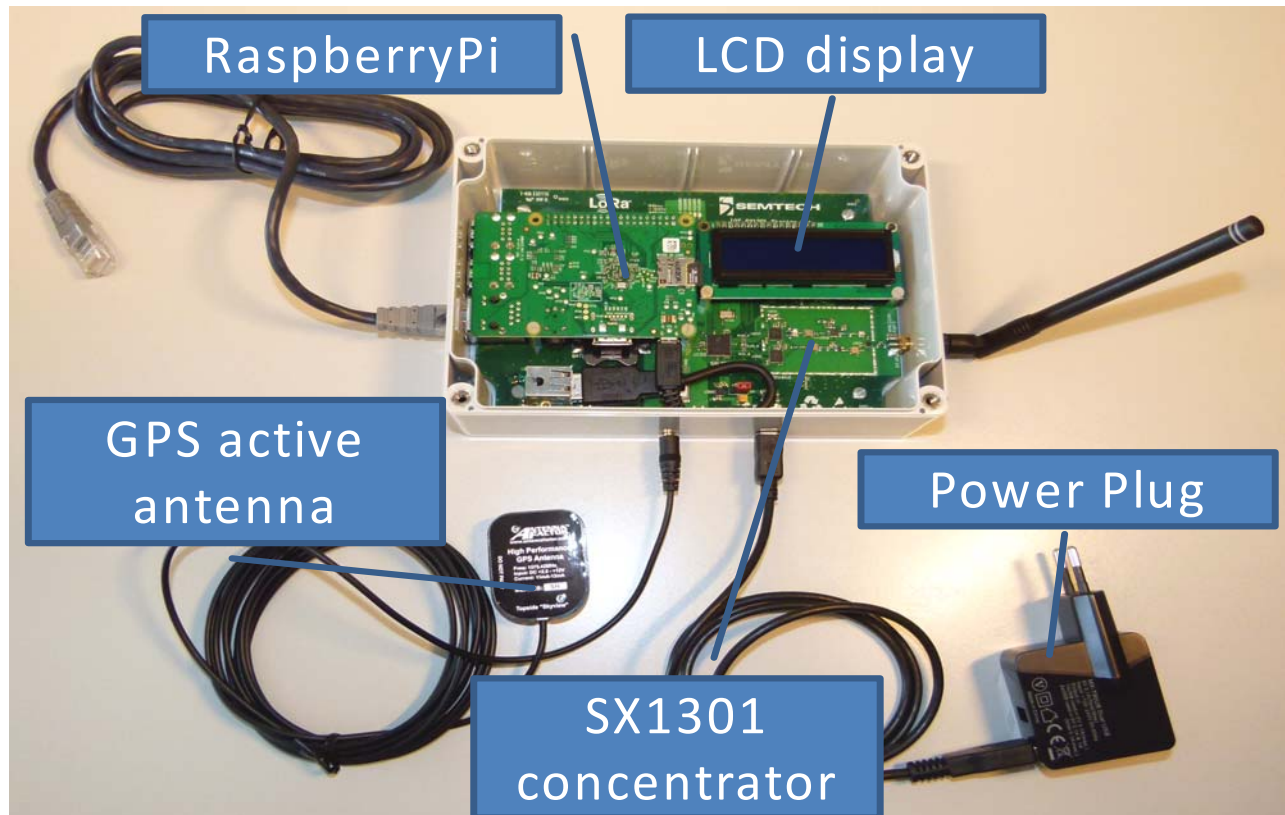
1. Goal of this Kit

This kit is designed to offer a self-contained Plug'n Play local loop for all IOT object designers, allowing them to verify that their design is able to connect to a public IOT network following the LoRaWAN specification.

No connection to an Ethernet network is required, simplifying the setup. A simple cross over Ethernet cable can be used to access the kit.

2. Contents of the development kit

- ◆ RaspberryPi B+ with its LoRa IOT shield unit and pre-installed micro SD card
- ◆ SX1301-based concentrator reference design
- ◆ Active GPS antenna
- ◆ USB cables
- ◆ Power adapter
- ◆ Example end-point: LoRaMote or MBED shield unit. It is provided as a reference to confirm the functionality of this setup.



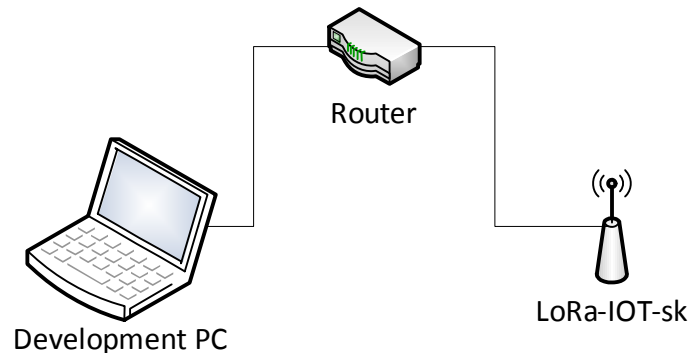
3. Getting Started

Two ways to get connected to the starter kit are possible.

- ◆ Connection to an Ethernet network composed of a router and a DHCP server.
- ◆ Connection using an Ethernet cable connected between the development PC and the starter kit.

3.1. Connection to an Ethernet Network

1) Plug the simplified network setup as per the picture below. It must be connected to the same network as the one your development PC is connected to.



2) When all ready, power it up and wait about 2mn for the device to boot-up.

3) Look-up the LCD screen to see the IP address that the RaspberryPi was given by the DHCP server.

4) On your PC, launch a web browser session and type this IP address into the web browser address bar.

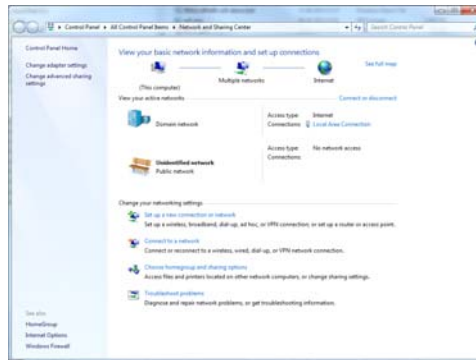
5) The following page will appear:



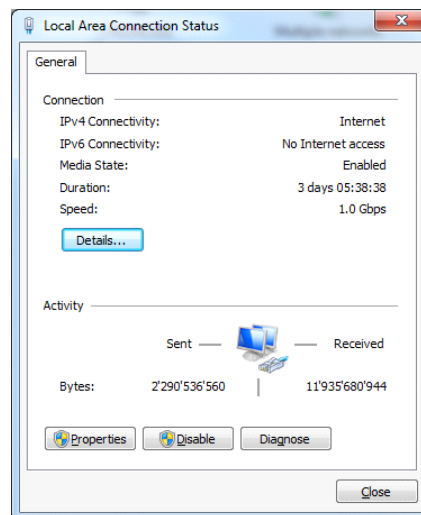
WIRELESS, SENSING & TIMING PRODUCTS

3.2. Connection using an Ethernet Cable

- 1) Connect the RaspberryPi to your PC using an Ethernet cable.
- 2) On the PC, go to Network settings.

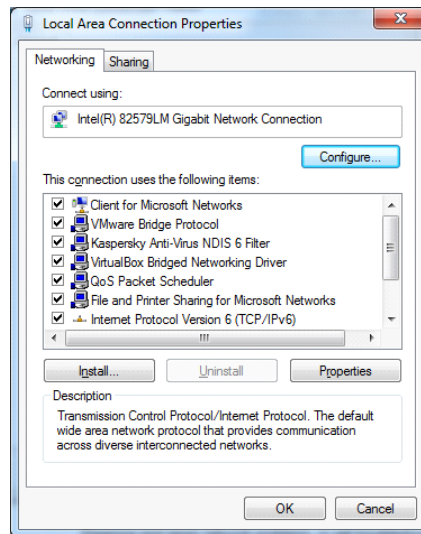


- 3) Click on "Local Area Connection"

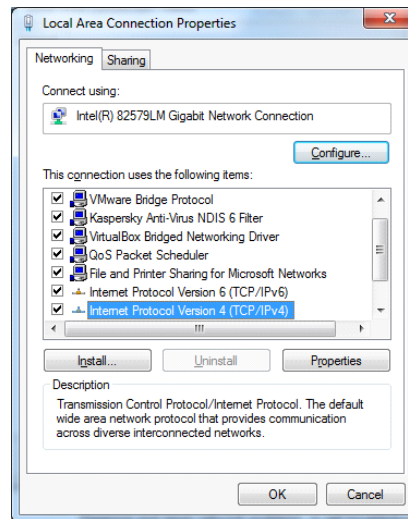


WIRELESS, SENSING & TIMING PRODUCTS

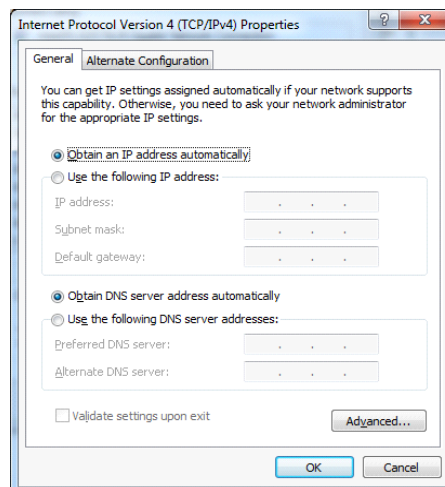
4) Click on "Properties"



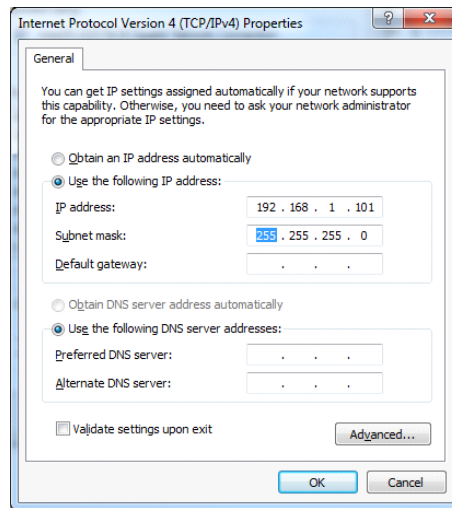
5) Select "Internet Protocol Version 4 (TCP/IPv4)"



6) Click "Properties" button



7) Select "Use the following IP address:"



8) Enter the IP address like 192.168.1.XXX where XXX is different from 100 as it is the Raspberry static IP address.

9) Click the "OK" button.

10) Click the "OK" button on "Local Area Connection Properties" window.

11) Close "Local Area Connection Status".

12) Please follow the same steps as on previous chapter starting from step 4.

REMARK: Don't forget to replace the IP address for 192.168.1.100 instead of the one assigned by DHCP

A local network has been successfully deployed on your bench. Any proprietary end-point design can now try and connect to the network.





4. RaspberryPI Software

The LoRaWAN server and gateway software run on the RaspberryPI.

Once the RaspberryPI has boot up the LCD screen will show information about the LoRaWAN server and gateway applications status, the percentage of used disk space on the SD card as well as the DHCP and static IP addresses.



The indications meaning of the LCD first line are:

- ◆ G: Indicates if the gateway application is running  or not 
- ◆ S: Indicates if the LoRaWAN server application is running  or not 
- ◆ D: Used disk space in percent

The second line displays the DHCP assigned IP address as well as the static IP address. Each one is displayed every 5 seconds when both are available.

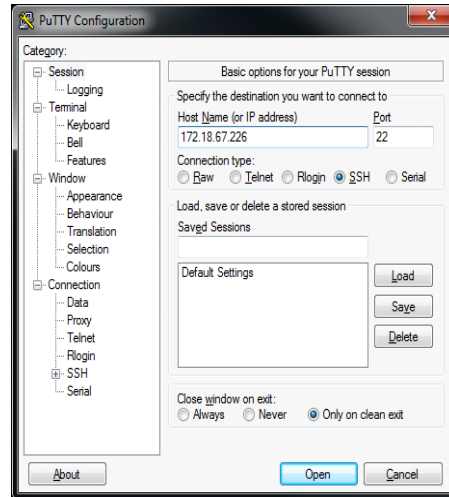
4.1. RaspberryPI Command Line Access

To access the RaspberryPI one must use an SSH client such PuTTY on Windows platforms or a terminal console on UNIX based systems.

The RaspberryPI user name is `lora` and the password `lora`.

4.2. Access Using PuTTY

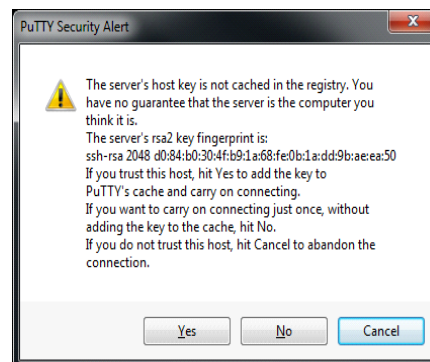
1) Launch PuTTY



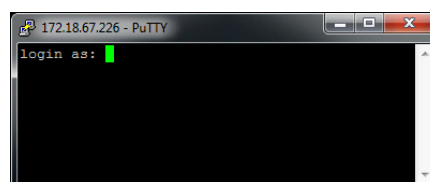
2) Enter the IP address displayed on the RaspberryPI LCD display

3) Click the “Open” button

4) If a security alert window is displayed Please click on “Yes” button.



5) The login prompt is then displayed

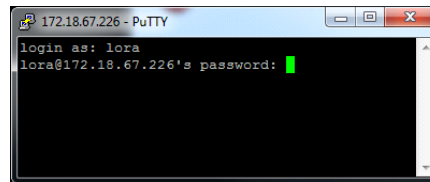


WIRELESS, SENSING & TIMING PRODUCTS

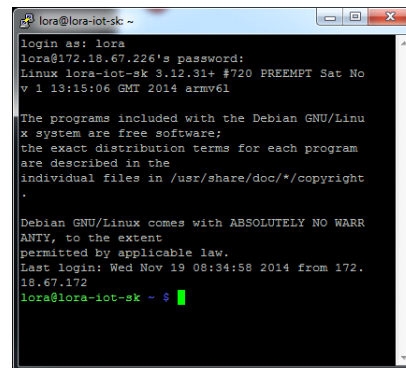
6) Please enter `lora` as username



7) Please enter `lora` as password

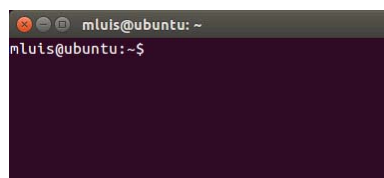


8) You are now logged on



4.3. Access Using UNIX Terminal Console

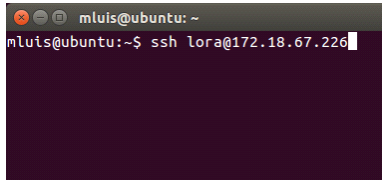
1) Launch a terminal console



WIRELESS, SENSING & TIMING PRODUCTS

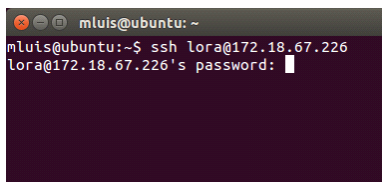
2) Please enter the following command in the terminal window

```
$ ssh lora@RaspberryPi-IP-address
```



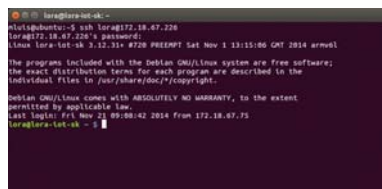
```
m Luis@ubuntu: ~  
m Luis@ubuntu:~$ ssh lora@172.18.67.226
```

3) After pressing the Enter key, enter the password Lora



```
m Luis@ubuntu:~$ ssh lora@172.18.67.226  
lora@172.18.67.226's password:
```

4) You are now logged on



```
lora@lora-net-ik ~  
m Luis@ubuntu:~$ ssh lora@172.18.67.226  
lora@172.18.67.226's password:  
Linux lora-lot-ik 3.12.31+ #720 PREEMPT Sat Nov 1 13:15:06 GMT 2014 armv6l  
The programs included with the Debian GNU/Linux system are free software;  
the exact distribution terms for each program are described in the  
individual files in /usr/share/doc/*/copyright.  
Debian GNU/Linux comes with ABSOLUTELY NO WARRANTY, to the extent  
permitted by applicable law.  
Last login: Fri Nov 1 09:58:42 2014 from 172.18.67.75  
lora@lora-lot-ik ~
```

5. Application Software Locations

All the software applications used by the RaspberryPI to run the IOT starter kit are located under `/opt/lora-net`.

This directory contains 4 directories:

- ◆ gateway, this directory contains the

- 1) lora_gateway, SX1301 control library source code

https://github.com/Lora-net/lora_gateway.git

This source code has been adapted to use the RaspberryPI hardware SPI as well as the control of the SX1301 board reset pin.

- 2) packet_forwarder, gateway application source code

https://github.com/Lora-net/packet_forwarder.git

The configuration JSON files have been modified in order to use the GPS module as well as the network server connection parameters.

- 3) lr-nwk-gw, gateway script to start/stop/restart the daemon.

- ◆ misc, contains the Python and shell scripts need for the LCD management.
- ◆ server, contains the precompiled LoRaWAN network server as well as the script to start/stop/restart the daemon
- ◆ www, contains the web server pages

6. Starting / Stopping the Demon Scripts

To control the server and gateway daemons the following commands must be issued:

- Starting
The server: `sudo /etc/init.d/lr-nwk-srv start`
The gateway: `sudo /etc/init.d/lr-nwk-gw start`
- Stopping
The server: `sudo /etc/init.d/lr-nwk-srv stop`
The gateway: `sudo /etc/init.d/lr-nwk-gw stop`
- Restarting
The server: `sudo /etc/init.d/lr-nwk-srv restart`
The gateway: `sudo /etc/init.d/lr-nwk-gw restart`
- Getting the demon status
The server: `sudo /etc/init.d/lr-nwk-srv status`
The gateway: `sudo /etc/init.d/lr-nwk-gw status`

The 2 daemons output their logs to files located in the /tmp directory.

The LCD "G:" and "S:" indicate the 2 daemons status

7. Server MySQL Database

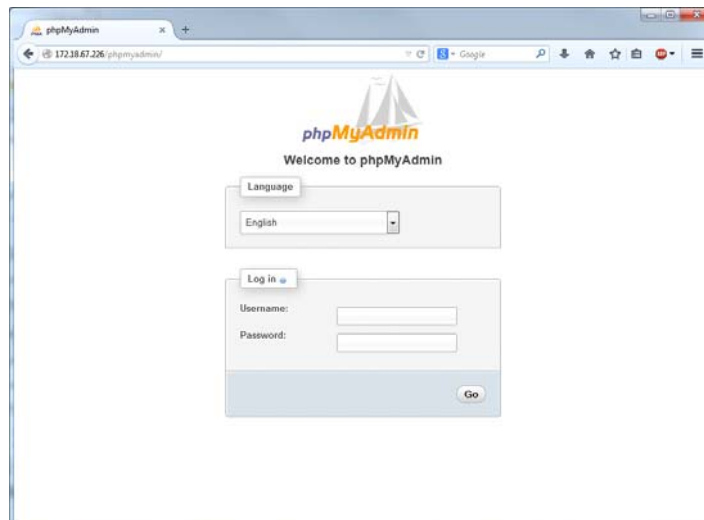
The RaspberryPI disk usage will increase over the time by recording all the end-devices frames onto the MySQL database.

It is advisable that once the disk usage displayed on the RaspberryPI LCD screen is getting close to 90% of disk usage that the database is cleaned up.

7.1. Cleanup

It is possible to clean-up the database for a fresh-start.

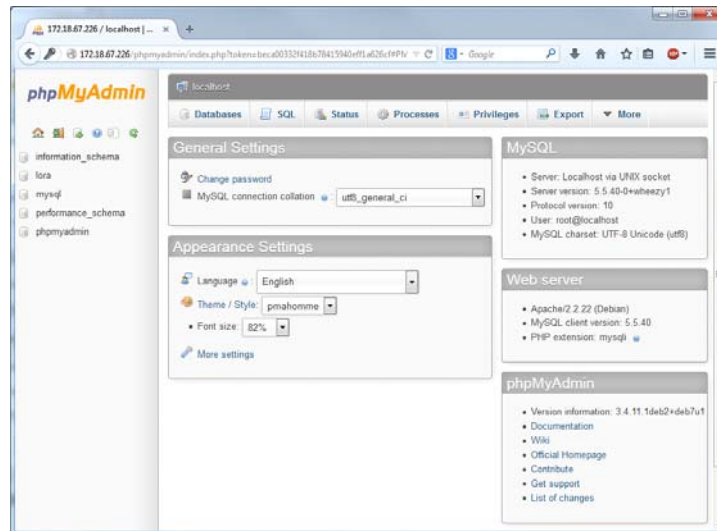
- 1) Please stop the server application as described in chapter “Starting / Stopping the demon scripts”
- 2) Open a web browser
- 3) Type the IOT Starter Kit IP address followed by the following text “/phpmyadmin” to the web browser address bar.



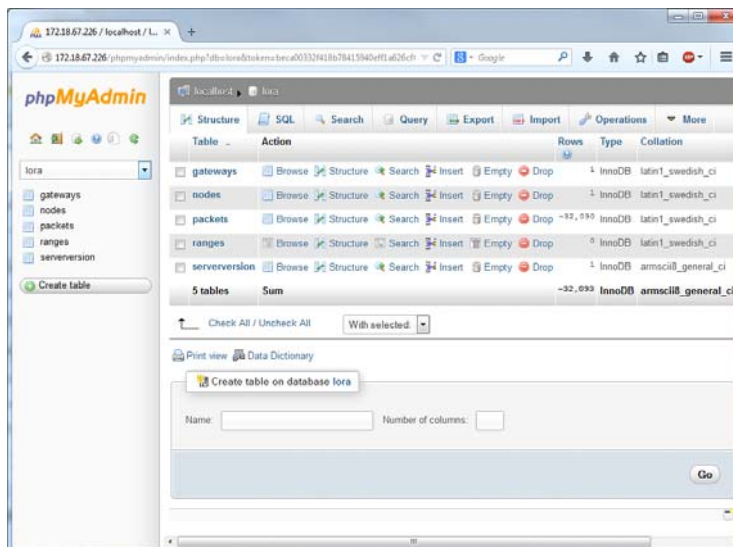
- 4) The user name is `root` and password is also `root`

WIRELESS, SENSING & TIMING PRODUCTS

5) Click “Go” button



6. Click “lora” database on the left of the window



7) Click on “Empty” (trash can icon) link for each table

7.2. MySQL Server Users

Three more users have been defined (in addition to the root user) to access the database:

- ◆ loraadmin, has full access to the database (password: loraadmin)
- ◆ lorarw, has the right to read and update the tables (password: lorarw). The server uses this user to access the database.
- ◆ loraro, has the right to only read the tables (password: loraro). Used by the web server to access the tables.

8. Updates and Upgrades

Semtech will issue some releases of the network software under the form of a new RaspberryPi image file to be programmed onto a SD card. Please ask your Semtech representative for an update.

The current delivery of the IOT kits contains the following versions of the different components:

- ◆ LoRaWAN specification R3.0 (production)
- ◆ Server release v1.4.2 (Semtech's example network server implementation)
- ◆ LoRaMote end-point firmware v3.0
- ◆ mbed platform end-point firmware (not yet available)

9. End-devices Firmware

9.1. LoRaMote

LoRaWAN firmware projects are available as source code in GitHub at the following address:

<https://github.com/Lora-net/LoRaMac-node.git>

The firmware must be configured to use activation by personalization and the NwkSKey and AppSKey must be modified to:

- ◆ NwkSKey:
{0x11, 0x22, 0x33, 0x44, 0x55, 0x66, 0x77, 0x88, 0x99, 0xAA, 0xBB, 0xCC, 0xDD, 0xEE, 0xFF, 0x00}
- ◆ AppSKey:
{0x11, 0x22, 0x33, 0x44, 0x55, 0x66, 0x77, 0x88, 0x99, 0xAA, 0xBB, 0xCC, 0xDD, 0xEE, 0xFF, 0x00}

These keys correspond to the application server implemented in this demo. They are hardcoded and compiled in the LoRaWAN server and can't be changed in this release.

9.2. mbed

LoRaWAN firmware projects aren't yet available at the time of this document release. Please check:

<http://www.mbed.org>

as sources will be provided by Semtech soon.

9.3. How-to Upgrade the RaspberryPi SD Card

To upgrade the SD card you can follow the instructions described in the following link:

<http://www.raspberrypi.org/documentation/installation/installing-images/>

The image to be used is the one that you get from Semtech.

10. Ordering Information

Option 1: LoRaMote with integrated antenna

- ◆ A variety of sensors to select from
- ◆ GPS is built-in
- ◆ Download sources for Keil and Ride on:
<https://github.com/Lora-net/LoRaMac-node>

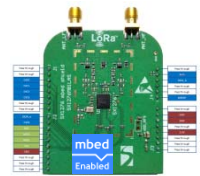
Ordering Code: IOT868STKLM1



Option 2: MBED shield unit plugged onto MBED Freedom platform

- ◆ MBED-enabled, with online development environment
- ◆ Multiple ARM vendors to select from
- ◆ Download sources on:
<http://mbed.org/components/SX1276MB1xAS/>

Ordering Code: IOT868STKMB1



11. Troubleshooting

Q: The IP address I type doesn't lead me to the corresponding landing page.

A: It is probably because the Raspberry Pi device did not get a DHCP lease from the network router (this depends of companies' network policies, please talk to your IT manager). If it is not possible to whitelist this device, the fall back solution is to use the second connection option described in "Connection using an Ethernet cable connected between the development PC and the starter kit." chapter.

© Semtech 2015

All rights reserved. Reproduction in whole or in part is prohibited without the prior written consent of the copyright owner. The information presented in this document does not form part of any quotation or contract, is believed to be accurate and reliable and may be changed without notice. No liability will be accepted by the publisher for any consequence of its use. Publication thereof does not convey nor imply any license under patent or other industrial or intellectual property rights. Semtech assumes no responsibility or liability whatsoever for any failure or unexpected operation resulting from misuse, neglect improper installation, repair or improper handling or unusual physical or electrical stress including, but not limited to, exposure to parameters beyond the specified maximum ratings or operation outside the specified range.

SEMTECH PRODUCTS ARE NOT DESIGNED, INTENDED, AUTHORIZED OR WARRANTED TO BE SUITABLE FOR USE IN LIFE-SUPPORT APPLICATIONS, DEVICES OR SYSTEMS OR OTHER CRITICAL APPLICATIONS. INCLUSION OF SEMTECH PRODUCTS IN SUCH APPLICATIONS IS UNDERSTOOD TO BE UNDERTAKEN SOLELY AT THE CUSTOMER'S OWN RISK. Should a customer purchase or use Semtech products for any such unauthorized application, the customer shall indemnify and hold Semtech and its officers, employees, subsidiaries, affiliates, and distributors harmless against all claims, costs damages and attorney fees which could arise.

Contact information

Semtech Corporation
Wireless, Sensing & Timing Products Division
200 Flynn Road, Camarillo, CA 93012
Phone: (805) 498-2111 Fax: (805) 498-3804
E-mail: sales@semtech.com
support_rf@semtech.com
Internet: <http://www.semtech.com>

X-ON Electronics

Largest Supplier of Electrical and Electronic Components

Click to view similar products for [Sub-GHz Development Tools](#) category:

Click to view products by [Semtech](#) manufacturer:

Other Similar products are found below :

[EVAL-ADF7021DBJZ](#) [EVAL-ADF7021-NDBZ2](#) [EVAL-ADF7021-VDB3Z](#) [EVAL-ADF7023DB3Z](#) [MICRF219A-433 EV](#) [MICRF220-433 EV](#) [AD6679-500EBZ](#) [EVAL-ADF7901EBZ](#) [EVAL-ADF790XEBZ](#) [110976-HMC453QS16G](#) [STEVAL-IKR002V7D](#) [MAX2602EVKIT+](#) [MAX1472EVKIT-315](#) [MAX1479EVKIT-315](#) [STEVAL-IKR002V3D](#) [MAX7042EVKIT-315+](#) [MAX2902EVKIT#](#) [MAX9947EVKIT+](#) [MAX1470EVKIT-315](#) [SKY66188-11-EK1](#) [SKY66013-11-EVB](#) [EVAL-ADF7023DB5Z](#) [DRF1200/CLASS-E 1096](#) [1097](#) [1098](#) [MDEV-900-PRO](#) [DVK-SFUS-1-GEVK](#) [DVK-SFUS-API-1-GEVK](#) [US-SIGFOX-GEVB](#) [STEVAL-IKR002V2D](#) [107755-HMC454ST89](#) [DM182017-2](#) [110961-HMC453ST89](#) [DM182017-1](#) [3179](#) [DC689A](#) [DC1513B-AB](#) [3229](#) [3230](#) [3231](#) [3232](#) [DC1250A-AA](#) [DC1513B-AC](#) [DC1513B-AD](#) [DC1513B-AA](#) [TEL0075](#) [131903-HMC921LP4E](#) [EU-SIGFOX-GEVB](#) [856512-EVB](#)