

LL4148PF

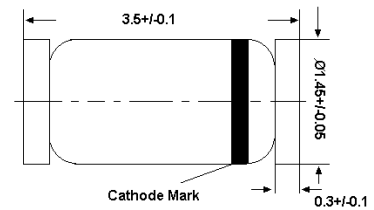
Silicon Epitaxial Planar Switching Diode

Fast switching diode in MiniMELF case especially suited for automatic surface mounting

Features

- Lead Free

LL-34



Glass case MiniMELF
Dimensions in mm

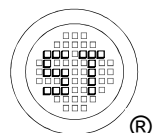
Absolute Maximum Ratings ($T_a = 25^\circ\text{C}$)

Parameter	Symbol	Value	Unit
Peak Reverse Voltage	V_{RM}	100	V
Reverse Voltage	V_R	75	V
Average Rectified Forward Current	$I_{F(AV)}$	200	mA
Non-repetitive Peak Forward Surge Current	I_{FSM}	0.5	A
at $t = 1$ s		1	
at $t = 1$ ms		4	
at $t = 1$ μ s			
Power Dissipation	P_{tot}	500	mW
Junction Temperature	T_j	175	$^\circ\text{C}$
Storage Temperature Range	T_{stg}	- 65 to + 175	$^\circ\text{C}$

Thermal Characteristics

Parameter	Symbol	Max.	Unit
Thermal Resistance from Junction Ambient ¹⁾	$R_{\theta JA}$	300	$^\circ\text{C/W}$

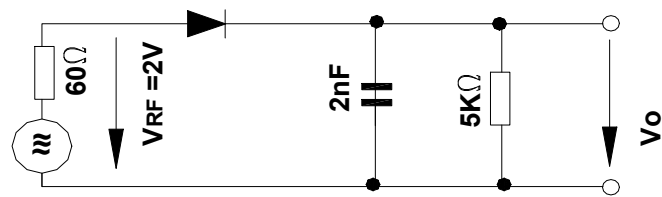
¹⁾Valid provided that electrodes are kept at ambient temperature.



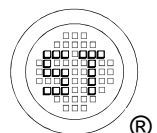
LL4148PF

Characteristics at $T_a = 25^\circ\text{C}$

Parameter	Symbol	Min.	Max.	Unit
Reverse Breakdown Voltage tested with 100 μA Pulses	$V_{(BR)R}$	100	-	V
Forward Voltage at $I_F = 10 \text{ mA}$	V_F	-	1	V
Leakage Current at $V_R = 20 \text{ V}$ at $V_R = 75 \text{ V}$ at $V_R = 20 \text{ V}, T_j = 150^\circ\text{C}$	I_R I_R I_R	- - -	25 5 50	nA μA μA
Capacitance at $V_R = 0, f = 1 \text{ MHz}$	C_{tot}	-	4	pF
Voltage Rise when Switching on tested with 50 mA Forward Pulses $t_p = 0.1 \text{ s}$, Rise Time < 30 ns, $f_p = 5$ to 100 KHz	V_{fr}	-	2.5	V
Reverse Recovery Time at $I_F = 10 \text{ mA}$, $I_{rr} = 0.1 \times I_R$, $V_R = 6 \text{ V}$, $R_L = 100 \Omega$	t_{rr}	-	4	ns
Rectification Efficiency at $f = 100 \text{ MHz}$, $V_{RF} = 2 \text{ V}$	η_V	0.45	-	-



Rectification Efficiency Measurement Circuit



LL4148PF

Electrical Characteristics Curves

Fig 1. Forward Characteristics

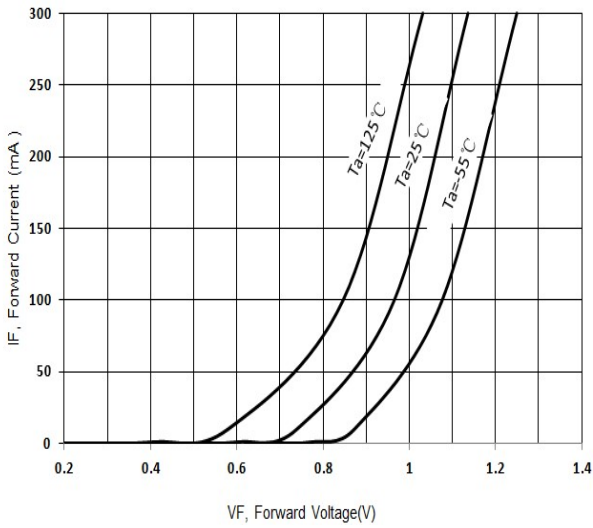


Fig 2. Reverse Characteristics

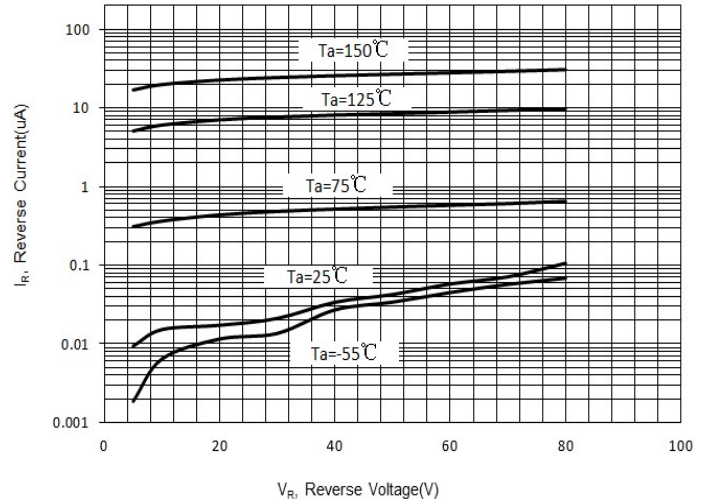


Fig 3. Junction Capacitance

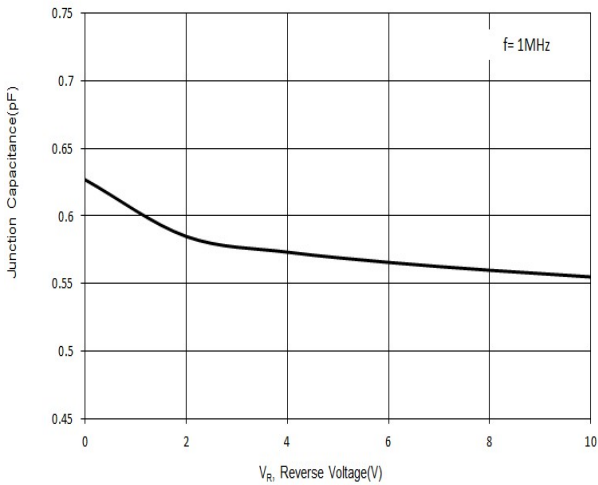
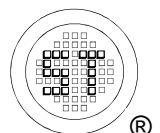
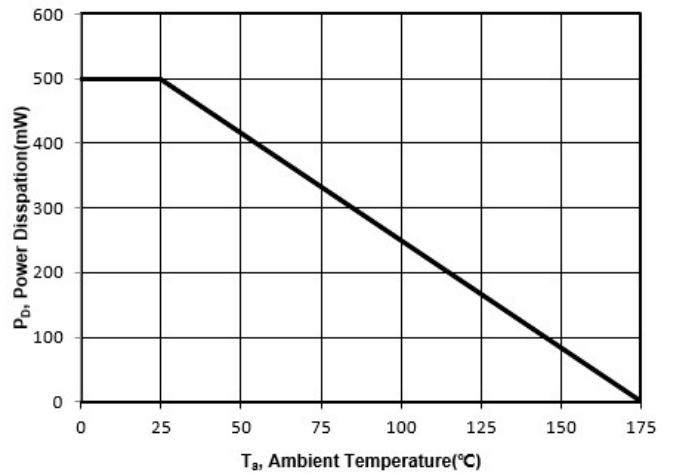


Fig 4. Power Derating Curves



X-ON Electronics

Largest Supplier of Electrical and Electronic Components

Click to view similar products for [Diodes - General Purpose, Power, Switching category](#):

Click to view products by [Semtech manufacturer](#):

Other Similar products are found below :

[MCL4151-TR3](#) [MMBD3004S-13-F](#) [RD0306T-H](#) [1N3611](#) [NTE156A](#) [NTE574](#) [NTE6244](#) [1SS193,LF](#) [1SS400CST2RA](#) [SDAA13](#)
[SHN2D02FUTW1T1G](#) [LS4151GS08](#) [1N4449](#) [1N456A](#) [1N4934-E3/73](#) [1N914BTR](#) [RFUH20TB3S](#) [D291S45T](#) [BAV300-TR](#) [BAW56DWQ-](#)
[7-F](#) [BAW56M3T5G](#) [BAW75-TAP](#) [MM230L-CAA](#) [IDW40E65D1](#) [JAN1N3600](#) [JAN1N4454UR-1](#) [LL4151-GS18](#) [SMMSD4148T3G](#)
[BYW95B/A52A](#) [NSVDAN222T1G](#) [CDSZC01100-HF](#) [LL4150-M-08](#) [1N4454-TR](#) [BAV70HDW-7](#) [BAS28-7](#) [JANTX1N6640](#) [BAW56HDW-](#)
[13](#) [BAS28 TR](#) [VS-HFA04SD60STR-M3](#) [NSVM1MA152WKT1G](#) [1SS388-TP](#) [RGP30D-E3/73](#) [VS-8EWF02S-M3](#) [BAV99TQ-13-F](#)
[BAV99HDW-13](#) [MMDB30-E28X](#) [IDP20C65D2XKSA1](#) [LS4148](#) [IDV15E65D2](#) [NSVM1MA152WAT1G](#)