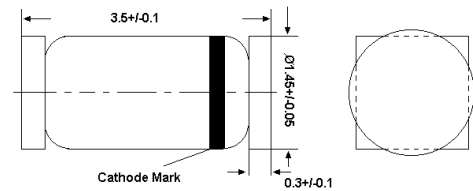


LS4148

Silicon Epitaxial Planar Switching Diode

Fast switching diode in QuadroMELF case
 especially suited for automatic surface mounting.
 Identical electrically to standard JEDEC 1N4148

LS-34

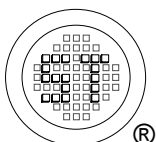


QuadroMELF
 Dimensions in mm

Absolute Maximum Ratings ($T_a = 25^\circ\text{C}$)

Parameter	Symbol	Value	Unit
Peak Reverse Voltage	V_{RM}	100	V
Reverse Voltage	V_R	75	V
Average Rectified Forward Current	$I_{F(AV)}$	200	mA
Forward Current	I_F	300	mA
Repetitive Peak Forward Current	I_{FRM}	500	mA
Non-repetitive Peak Forward Surge Current	at $t = 1$ s	0.5	A
	at $t = 1$ ms	1	
	at $t = 1$ μ s	4	
Power Dissipation	P_{tot}	500 ¹⁾	mW
Junction Temperature	T_j	175	$^\circ\text{C}$
Storage Temperature Range	T_{stg}	- 65 to + 175	$^\circ\text{C}$

¹⁾ Valid provided that electrodes are kept at ambient temperature.



SEMTECH ELECTRONICS LTD.
 Subsidiary of Sino-Tech International (BVI) Limited

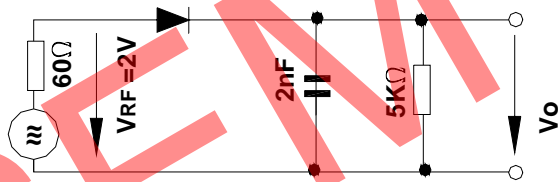


LS4148

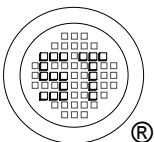
Characteristics at $T_a = 25^\circ\text{C}$

Parameter	Symbol	Min.	Max.	Unit
Reverse Breakdown Voltage tested with 100 μA Pulses	$V_{(BR)R}$	100	-	V
Forward Voltage at $I_F = 10 \text{ mA}$	V_F	-	1	V
Reverse Leakage Current at $V_R = 20 \text{ V}$ at $V_R = 75 \text{ V}$ at $V_R = 20 \text{ V}, T_j = 150^\circ\text{C}$	I_R I_R I_R	- - -	25 5 50	nA μA μA
Capacitance at $V_R = 0, f = 1 \text{ MHz}$	C_{tot}	-	4	pF
Voltage Rise when Switching ON tested with 50mA Forward Pulses $t_p = 0.1 \text{ s}$, Rise Time < 30 ns, $f_p = 5 \text{ to } 100 \text{ KHz}$	V_{fr}	-	2.5	V
Reverse Recovery Time at $I_F = 10 \text{ mA}$ to $I_R = 1 \text{ mA}$, $I_{rr} = 0.1 \times I_R$, $V_R = 6 \text{ V}$, $R_L = 100 \Omega$	t_{rr}	-	4	ns
Thermal Resistance Junction to Ambient Air	R_{thA}	-	0.35 ¹⁾	K/mW
Rectification Efficiency at $f = 100 \text{ MHz}$, $V_{RF} = 2 \text{ V}$	η_v	0.45	-	-

¹⁾ Valid provided that electrodes are kept at ambient temperature.

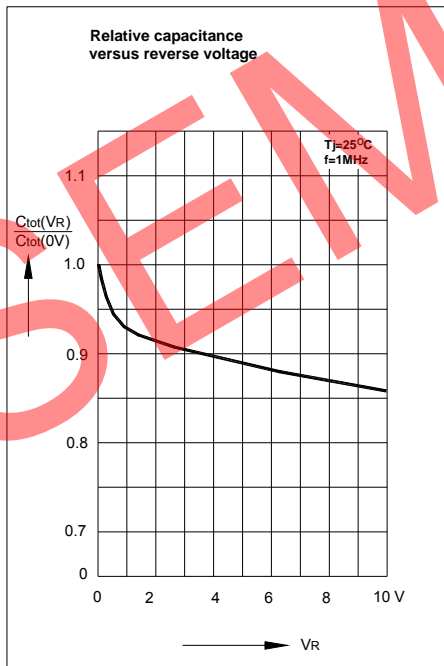
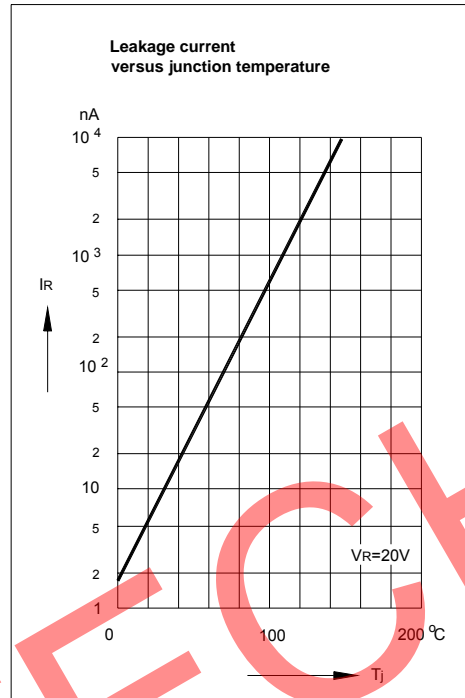
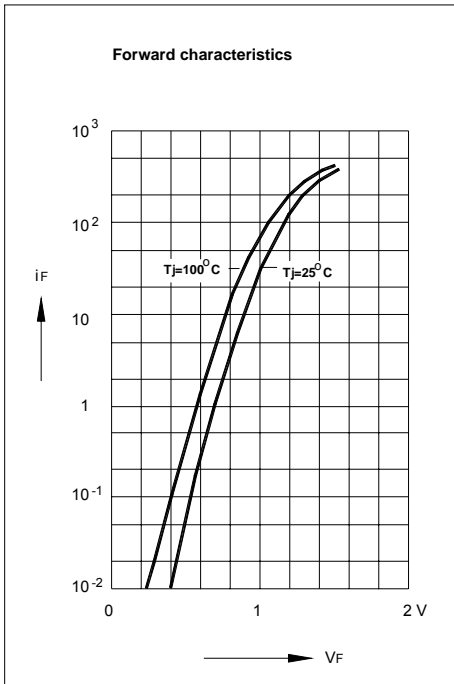


Rectification Efficiency Measurement Circuit

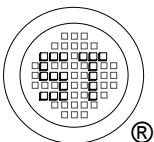


SEMTECH ELECTRONICS LTD.
Subsidiary of Sino-Tech International (BVI) Limited





SEMTECH



SEMTECH ELECTRONICS LTD.
 Subsidiary of Sino-Tech International (BVI) Limited



X-ON Electronics

Largest Supplier of Electrical and Electronic Components

Click to view similar products for [Diodes - General Purpose, Power, Switching category:](#)

Click to view products by [Semtech manufacturer:](#)

Other Similar products are found below :

[MCL4151-TR3](#) [MMBD3004S-13-F](#) [RD0306T-H](#) [DSE010-TR-E](#) [BAV17-TR](#) [BAV19-TR](#) [1N3611](#) [NTE156A](#) [NTE574](#) [NTE6244](#) [1SS181-TP](#) [1SS193,LF](#) [1SS400CST2RA](#) [SDAA13](#) [SHN2D02FUTW1T1G](#) [LS4151GS08](#) [FC903-TR-E](#) [1N4449](#) [1N456A](#) [1N4934-E3/73](#) [1N914B](#) [1N914BTR](#) [1SS226-TP](#) [RFUH20TB3S](#) [D291S45T](#) [BAV300-TR](#) [BAW56DWQ-7-F](#) [BAW75-TAP](#) [MM230L-CAA](#) [IDW40E65D1](#) [JAN1N3600](#) [JAN1N4153-1](#) [JAN1N4454-1](#) [JAN1N4454UR-1](#) [LL4151-GS18](#) [053684A](#) [SMMSD4148T3G](#) [707803H](#) [NSVDAN222T1G](#) [CDSZC01100-HF](#) [LL4150-M-08](#) [1N4454-TR](#) [BAV70HDW-7](#) [BAS28-7](#) [JANTX1N6640](#) [BAW56HDW-13](#) [BAS28 TR](#) [VS-HFA04SD60STR-M3](#) [NSVM1MA152WKT1G](#) [1SS388-TP](#)