

# MM3Z2V0~MM3Z75

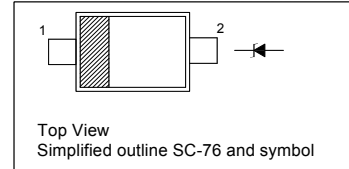
## Silicon Planar Zener Diodes

### Features

- Total power dissipation : max. 300 mW
- Small plastic package suitable for surface mounted design
- Tolerance approximately  $\pm 5\%$

### PINNING

| PIN | DESCRIPTION |
|-----|-------------|
| 1   | Cathode     |
| 2   | Anode       |

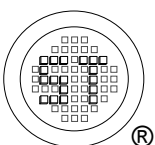


### Absolute Maximum Ratings ( $T_a = 25\text{ }^\circ\text{C}$ )

| Parameter                 | Symbol    | Value         | Unit             |
|---------------------------|-----------|---------------|------------------|
| Power Dissipation         | $P_{tot}$ | 300           | mW               |
| Junction Temperature      | $T_j$     | 150           | $^\circ\text{C}$ |
| Storage Temperature Range | $T_{stg}$ | - 55 to + 150 | $^\circ\text{C}$ |

### Characteristics at $T_a = 25\text{ }^\circ\text{C}$

| Parameter                                  | Symbol          | Max. | Unit               |
|--|-----------------|------|--------------------|
| Thermal Resistance Junction to Ambient Air | $R_{\theta JA}$ | 417  | $^\circ\text{C/W}$ |
| Forward Voltage at $I_F = 10\text{ mA}$    | $V_F$           | 0.9  | V                  |



**SEMTECH ELECTRONICS LTD.**



ISO/TS 16949 : 2009  
Certificate No. 160713000



ISO14001 : 2004  
Certificate No. 7116



ISO 9001 : 2008  
Certificate No. 90719410



BS-OHSAS 18001 : 2007  
Certificate No. 7116



IECQ QC 080000  
Certificate No. PRC-HSPM-1485-1

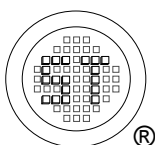
Dated: 16/03/2015 Rev: 01

# MM3Z2V0~MM3Z75

## Characteristics at $T_a = 25\text{ }^\circ\text{C}$

| Type    | Marking Code | Zener Voltage Range <sup>1)</sup> |                 |                     | Dynamic Impedance             |                     | Reverse Leakage Current         |                 |
|---------|--------------|-----------------------------------|-----------------|---------------------|-------------------------------|---------------------|---------------------------------|-----------------|
|         |              | $V_{znom}$<br>(V)                 | $V_{ZT}$<br>(V) | at $I_{ZT}$<br>(mA) | $Z_{ZT}$<br>Max. ( $\Omega$ ) | at $I_{ZT}$<br>(mA) | $I_R$<br>Max. ( $\mu\text{A}$ ) | at $V_R$<br>(V) |
| MM3Z2V0 | B0           | 2.0                               | 1.8...2.15      | 5                   | 100                           | 5                   | 120                             | 0.5             |
| MM3Z2V2 | C0           | 2.2                               | 2.08...2.33     | 5                   | 100                           | 5                   | 120                             | 0.7             |
| MM3Z2V4 | 1C           | 2.4                               | 2.28...2.56     | 5                   | 100                           | 5                   | 120                             | 1               |
| MM3Z2V7 | 1D           | 2.7                               | 2.5...2.9       | 5                   | 110                           | 5                   | 120                             | 1               |
| MM3Z3V0 | 1E           | 3.0                               | 2.8...3.2       | 5                   | 120                           | 5                   | 50                              | 1               |
| MM3Z3V3 | 1F           | 3.3                               | 3.1...3.5       | 5                   | 130                           | 5                   | 20                              | 1               |
| MM3Z3V6 | 1H           | 3.6                               | 3.4...3.8       | 5                   | 130                           | 5                   | 10                              | 1               |
| MM3Z3V9 | 1J           | 3.9                               | 3.7...4.1       | 5                   | 130                           | 5                   | 5                               | 1               |
| MM3Z4V3 | 1K           | 4.3                               | 4...4.6         | 5                   | 130                           | 5                   | 5                               | 1               |
| MM3Z4V7 | 1M           | 4.7                               | 4.4...5         | 5                   | 130                           | 5                   | 2                               | 1               |
| MM3Z5V1 | 1N           | 5.1                               | 4.8...5.4       | 5                   | 130                           | 5                   | 2                               | 1.5             |
| MM3Z5V6 | 1P           | 5.6                               | 5.2...6         | 5                   | 80                            | 5                   | 1                               | 2.5             |
| MM3Z6V2 | 1R           | 6.2                               | 5.8...6.6       | 5                   | 50                            | 5                   | 1                               | 3               |
| MM3Z6V8 | 1X           | 6.8                               | 6.4...7.2       | 5                   | 30                            | 5                   | 0.5                             | 3.5             |
| MM3Z7V5 | 1Y           | 7.5                               | 7...7.9         | 5                   | 30                            | 5                   | 0.5                             | 4               |
| MM3Z8V2 | 1Z           | 8.2                               | 7.7...8.7       | 5                   | 30                            | 5                   | 0.5                             | 5               |
| MM3Z9V1 | 2A           | 9.1                               | 8.5...9.6       | 5                   | 30                            | 5                   | 0.5                             | 6               |
| MM3Z10  | 2B           | 10                                | 9.4...10.6      | 5                   | 30                            | 5                   | 0.1                             | 7               |
| MM3Z11  | 2C           | 11                                | 10.4...11.6     | 5                   | 30                            | 5                   | 0.1                             | 8               |
| MM3Z12  | 2D           | 12                                | 11.4...12.7     | 5                   | 35                            | 5                   | 0.1                             | 9               |
| MM3Z13  | 2E           | 13                                | 12.4...14.1     | 5                   | 35                            | 5                   | 0.1                             | 10              |
| MM3Z15  | 2F           | 15                                | 13.8...15.6     | 5                   | 40                            | 5                   | 0.1                             | 11              |
| MM3Z16  | 2H           | 16                                | 15.3...17.1     | 5                   | 40                            | 5                   | 0.1                             | 12              |
| MM3Z18  | 2J           | 18                                | 16.8...19.1     | 5                   | 45                            | 5                   | 0.1                             | 13              |
| MM3Z20  | 2K           | 20                                | 18.8...21.2     | 5                   | 50                            | 5                   | 0.1                             | 15              |
| MM3Z22  | 2M           | 22                                | 20.8...23.3     | 5                   | 55                            | 5                   | 0.1                             | 17              |
| MM3Z24  | 2N           | 24                                | 22.8...25.6     | 5                   | 60                            | 5                   | 0.1                             | 19              |
| MM3Z27  | 2P           | 27                                | 25.1...28.9     | 2                   | 70                            | 2                   | 0.1                             | 21              |
| MM3Z30  | 2R           | 30                                | 28...32         | 2                   | 80                            | 2                   | 0.1                             | 23              |
| MM3Z33  | 2X           | 33                                | 31...35         | 2                   | 80                            | 2                   | 0.1                             | 25              |
| MM3Z36  | 2Y           | 36                                | 34...38         | 2                   | 90                            | 2                   | 0.1                             | 27              |
| MM3Z39  | 2Z           | 39                                | 37...41         | 2                   | 100                           | 2                   | 0.1                             | 30              |
| MM3Z43  | 3A           | 43                                | 40...46         | 2                   | 130                           | 2                   | 0.1                             | 33              |
| MM3Z47  | 3B           | 47                                | 44...50         | 2                   | 150                           | 2                   | 0.1                             | 36              |
| MM3Z51  | 3C           | 51                                | 48...54         | 2                   | 180                           | 2                   | 0.1                             | 39              |
| MM3Z56  | 3D           | 56                                | 52...60         | 2                   | 200                           | 2                   | 0.1                             | 43              |
| MM3Z62  | 3E           | 62                                | 58...66         | 2                   | 215                           | 2                   | 0.1                             | 47              |
| MM3Z68  | 3F           | 68                                | 64...72         | 2                   | 240                           | 2                   | 0.1                             | 52              |
| MM3Z75  | 3H           | 75                                | 70...79         | 2                   | 265                           | 2                   | 0.1                             | 56              |

<sup>1)</sup>  $V_{ZT}$  is tested with pulses (20 ms).

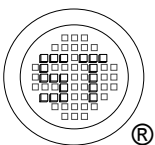
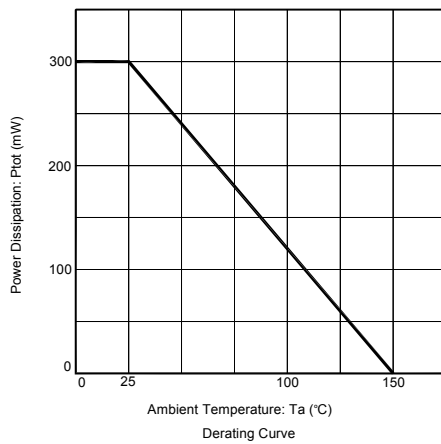
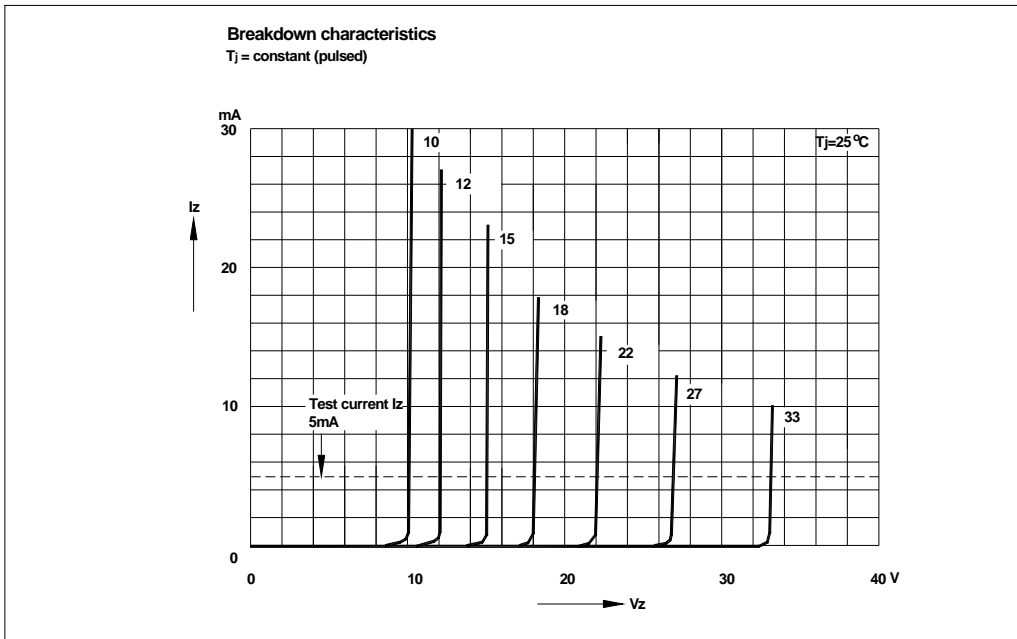
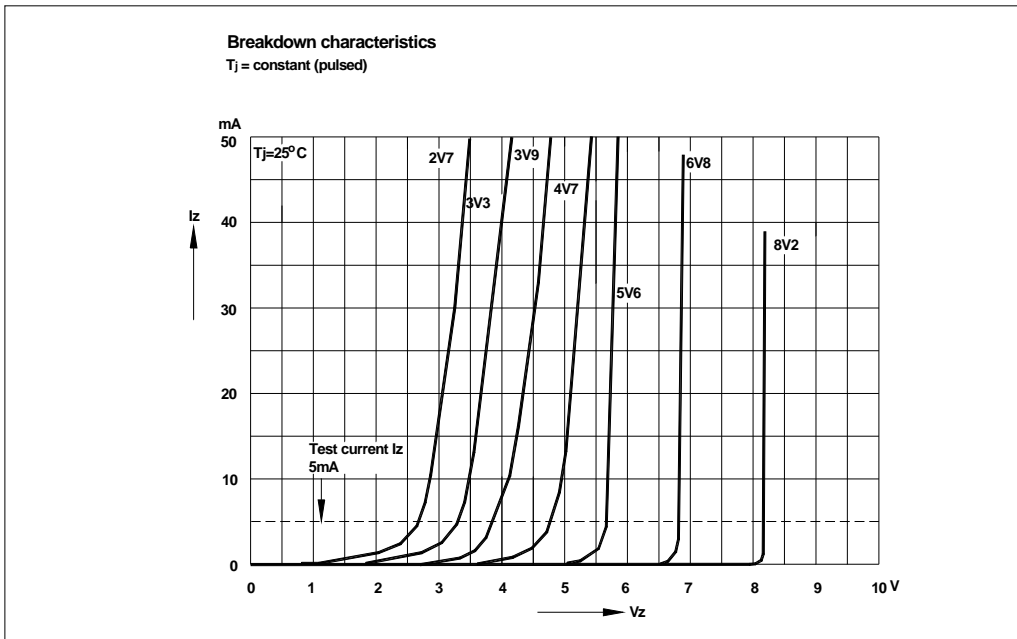


**SEMTECH ELECTRONICS LTD.**



Dated: 16/03/2015 Rev: 01

# MM3Z2V0~MM3Z75



**SEMTECH ELECTRONICS LTD.**



ISO/TS 16949 : 2009  
Certificate No. 160713000



ISO14001 : 2004  
Certificate No. 7116



ISO 9001 : 2008  
Certificate No. 50719410



BS-OHSAS 18001 : 2007  
Certificate No. 7116



IECQ QC 080000  
Certificate No. PRC-HSPM-1485-1

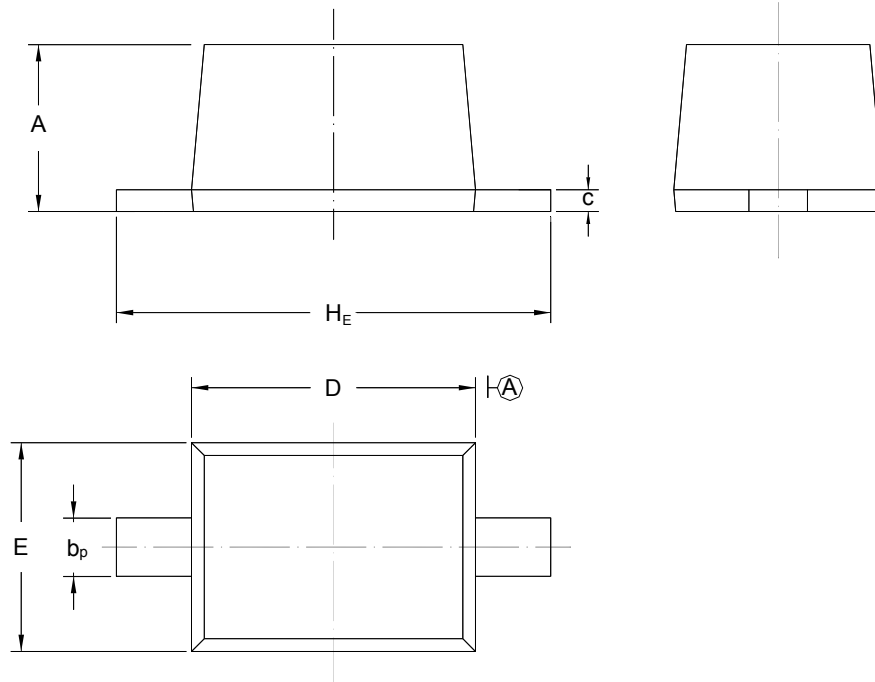
Dated: 16/03/2015 Rev: 01

# MM3Z2V0~MM3Z75

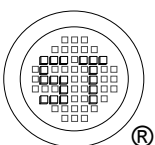
## PACKAGE OUTLINE

Plastic surface mounted package; 2 leads

SC-76



| UNIT | A            | b <sub>p</sub> | C            | D            | E            | H <sub>E</sub> |
|------|--------------|----------------|--------------|--------------|--------------|----------------|
| mm   | 1.10<br>0.80 | 0.40<br>0.25   | 0.15<br>0.10 | 1.80<br>1.60 | 1.35<br>1.15 | 2.80<br>2.30   |



**SEMTECH ELECTRONICS LTD.**



ISO/TS 16949 : 2009  
Certificate No. 160713000



ISO14001 : 2004  
Certificate No. 7116



ISO 9001 : 2008  
Certificate No. 50719410



BS-OHSAS 18001 : 2007  
Certificate No. 7116



IECQ QC 080000  
Certificate No. PRC-HSPM-1485-1

Dated: 16/03/2015 Rev: 01

## X-ON Electronics

Largest Supplier of Electrical and Electronic Components

*Click to view similar products for [Zener Diodes](#) category:*

*Click to view products by [Semtech](#) manufacturer:*

Other Similar products are found below :

[RKZ13B2KG#P1](#) [DL5234B](#) [EDZTE6113B](#) [1N4682](#) [1N4691](#) [1N4693](#) [1N4732A](#) [1N4736A](#) [1N4750A](#) [1N4759ARL](#) [1N5241B](#) [1N5365B](#)  
[1N5369B](#) [1N747A](#) [1N959B](#) [1N964B](#) [1N966B](#) [1N968B](#) [1N972B](#) [NTE5121A](#) [NTE5147A](#) [NTE5152A](#) [NTE5155A](#) [NTE5164A](#)  
[JANS1N4974US](#) [1N4692](#) [1N4700](#) [1N4702](#) [1N4704](#) [1N4711](#) [1N4714](#) [1N4737A](#) [1N4745ARL](#) [1N4752A](#) [1N4752ARL](#) [1N4760ARL](#)  
[1N5221B](#) [1N5236B](#) [1N5241BTR](#) [1N5242BTR](#) [1N5350B](#) [1N5352B](#) [1N961BRR1](#) [1N964BRL](#) [RKZ5.1BKU#P6](#) [3SMAJ5946B-TP](#)  
[3SMAJ5950B-TP](#) [3SMBJ5925B-TP](#) [441774C](#) [BZX84C3V9](#)