

MMFTP6401-HAF

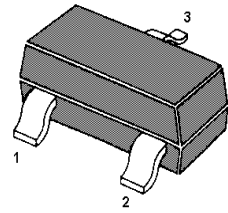
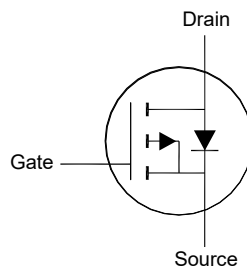
P-Channel Enhancement Mode MOSFET

Features

- Surface-mounted package
- Halogen and Antimony Free(HAF), RoHS compliant

Application

- Portable appliances
- Low power DC to DC Converter



1.Gate 2.Source 3.Drain
TO-236 Plastic Package

Absolute Maximum Ratings(at $T_a = 25^\circ\text{C}$ unless otherwise specified)

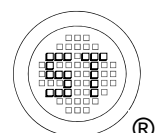
Parameter	Symbol	Value	Unit
Drain-Source Voltage	$-V_{DS}$	12	V
Gate-Source Voltage	V_{GS}	± 10	V
Drain Current	$-I_D$	4.3	A
Peak Drain Current, Pulsed ¹⁾	$-I_{DM}$	34	A
Power Dissipation ²⁾	P_D	1.3	W
Operating Junction and Storage Temperature Range	T_J, T_{stg}	- 55 to + 150	$^\circ\text{C}$

Thermal Resistance Ratings

Parameter	Symbol	Max.	Unit
Thermal Resistance from Junction to Ambient ²⁾	$R_{\theta JA}$	100	$^\circ\text{C/W}$

¹⁾ Pulse Test: Pulse Width $\leq 100 \mu\text{s}$, Duty Cycle $\leq 2\%$, Repetitive rating, pulse width limited by junction temperature $T_{J(\text{MAX})}=150^\circ\text{C}$.

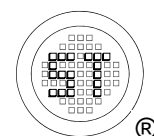
²⁾ Device mounted on FR-4 substrate PC board, 2oz copper, with 1-inch square copper plate in still air.



MMFTP6401-HAF

Characteristics at $T_a = 25^\circ\text{C}$ unless otherwise specified

Parameter	Symbol	Min.	Typ.	Max.	Unit
STATIC PARAMETERS					
Drain-Source Breakdown Voltage at $-I_D = 250 \mu\text{A}$	$-V_{(BR)DSS}$	12	-	-	V
Drain-Source Leakage Current at $-V_{DS} = 12 \text{ V}$	$-I_{DSS}$	-	-	1	μA
Gate Leakage Current at $V_{GS} = \pm 8 \text{ V}$	I_{GSS}	-	-	± 100	nA
Gate-Source Threshold Voltage at $V_{DS} = V_{GS}$, $-I_D = 250 \mu\text{A}$	$-V_{GS(th)}$	0.4	-	0.95	V
Drain-Source On-State Resistance at $-V_{GS} = 4.5 \text{ V}$, $-I_D = 4.3 \text{ A}$ at $-V_{GS} = 2.5 \text{ V}$, $-I_D = 2.5 \text{ A}$ at $-V_{GS} = 1.8 \text{ V}$, $-I_D = 2 \text{ A}$	$R_{DS(on)}$	-	-	50 85 125	m Ω
DYNAMIC PARAMETERS					
Gate Resistance at $V_{DS} = 0 \text{ V}$, $f = 1 \text{ MHz}$	R_g	-	3.6	-	Ω
Forward Transconductance at $-V_{DS} = 5 \text{ V}$, $-I_D = 4 \text{ A}$	g_{FS}	-	10.5	-	S
Input Capacitance at $-V_{DS} = 10 \text{ V}$, $V_{GS} = 0 \text{ V}$, $f = 1 \text{ MHz}$	C_{iss}	-	794	-	pF
Output Capacitance at $-V_{DS} = 10 \text{ V}$, $V_{GS} = 0 \text{ V}$, $f = 1 \text{ MHz}$	C_{oss}	-	92	-	pF
Reverse Transfer Capacitance at $-V_{DS} = 10 \text{ V}$, $V_{GS} = 0 \text{ V}$, $f = 1 \text{ MHz}$	C_{rss}	-	63	-	pF
Total Gate Charge at $-V_{DS} = 10 \text{ V}$, $-I_D = 1 \text{ A}$, $-V_{GS} = 4.5 \text{ V}$ at $-V_{DS} = 10 \text{ V}$, $-I_D = 1 \text{ A}$, $-V_{GS} = 2.5 \text{ V}$	Q_g	-	8.9 5.8	-	nC
Gate-Source Charge at $-V_{DS} = 10 \text{ V}$, $-I_D = 1 \text{ A}$, $-V_{GS} = 4.5 \text{ V}$	Q_{gs}	-	2	-	nC
Gate-Drain Charge at $-V_{DS} = 10 \text{ V}$, $-I_D = 1 \text{ A}$, $-V_{GS} = 4.5 \text{ V}$	Q_{gd}	-	2.7	-	nC
Turn-On Delay Time at $-V_{DS} = 10 \text{ V}$, $-V_{GS} = 5 \text{ V}$, $-I_D = 1 \text{ A}$, $R_G = 4.7 \Omega$	$t_{d(on)}$	-	8.8	-	ns
Turn-On Rise Time at $-V_{DS} = 10 \text{ V}$, $-V_{GS} = 5 \text{ V}$, $-I_D = 1 \text{ A}$, $R_G = 4.7 \Omega$	t_r	-	9	-	ns
Turn-Off Delay Time at $-V_{DS} = 10 \text{ V}$, $-V_{GS} = 5 \text{ V}$, $-I_D = 1 \text{ A}$, $R_G = 4.7 \Omega$	$t_{d(off)}$	-	34	-	ns
Turn-Off Fall Time at $-V_{DS} = 10 \text{ V}$, $-V_{GS} = 5 \text{ V}$, $-I_D = 1 \text{ A}$, $R_G = 4.7 \Omega$	t_f	-	18	-	ns
Body-Diode PARAMETERS					
Body Diode Voltage at $-I_S = 1.3 \text{ A}$, $V_{GS} = 0 \text{ V}$	$-V_{SD}$	-	-	1.2	V
Body-Diode Continuous Current	$-I_S$	-	-	4.3	A
Body Diode Reverse Recovery Time at $-I_S = 1 \text{ A}$, $di/dt = 100 \text{ A} / \mu\text{s}$	t_{rr}	-	8	-	ns
Body Diode Reverse Recovery Charge at $-I_S = 1 \text{ A}$, $di/dt = 100 \text{ A} / \mu\text{s}$	Q_{rr}	-	2.3	-	nC



Electrical Characteristics Curves

Fig. 1 Typical Output Characteristics

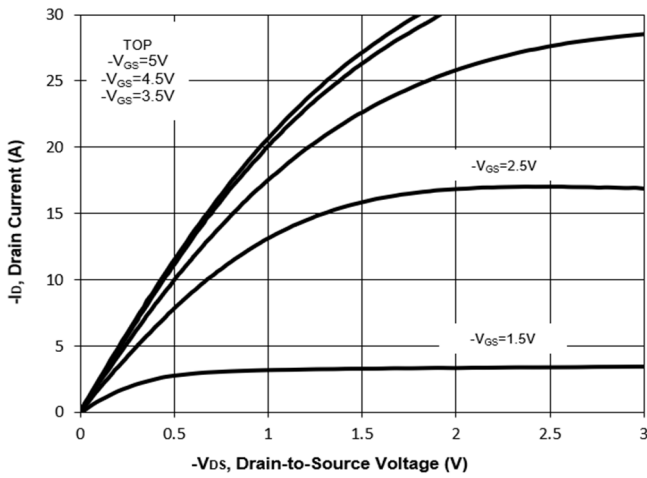


Fig. 2 Typical Transfer Characteristics

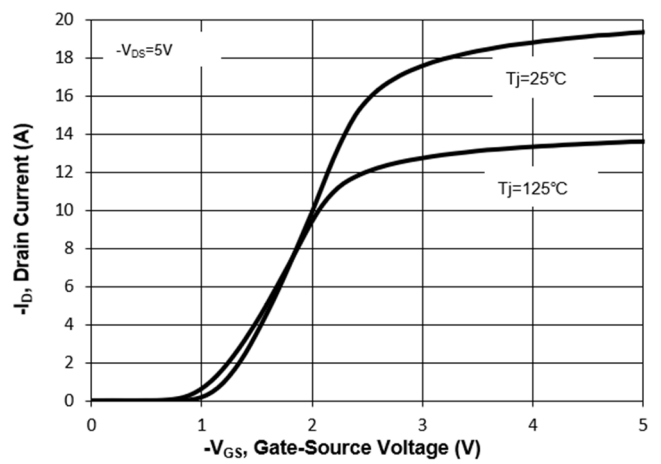


Fig. 3 on-Resistance vs. Drain Current

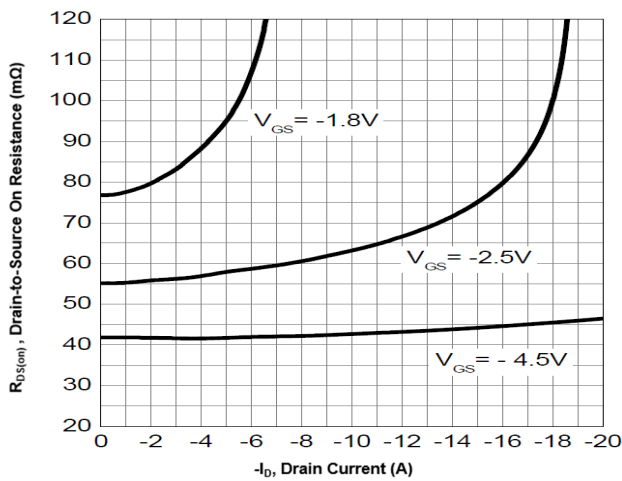


Fig. 4 on-Resistance vs. Gate Voltage

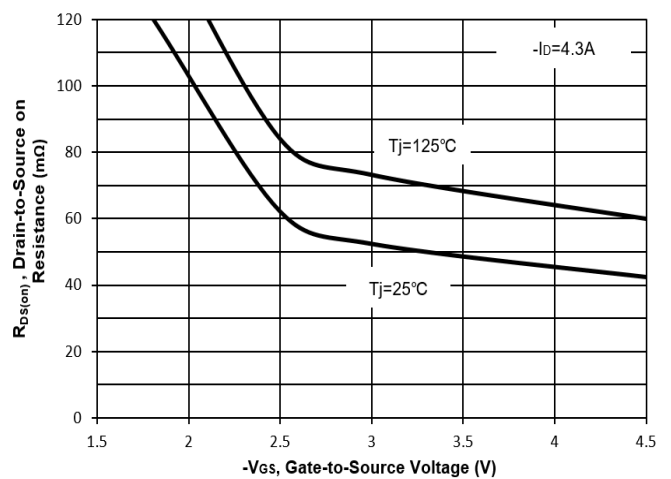


Fig. 5 on-Resistance vs. Tj

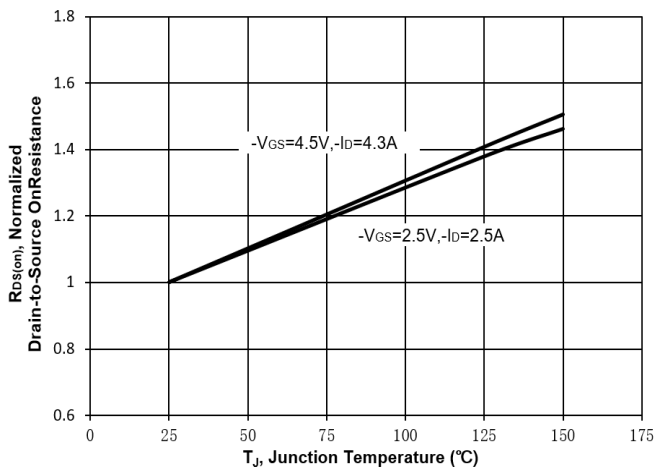
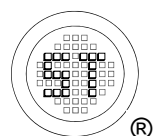
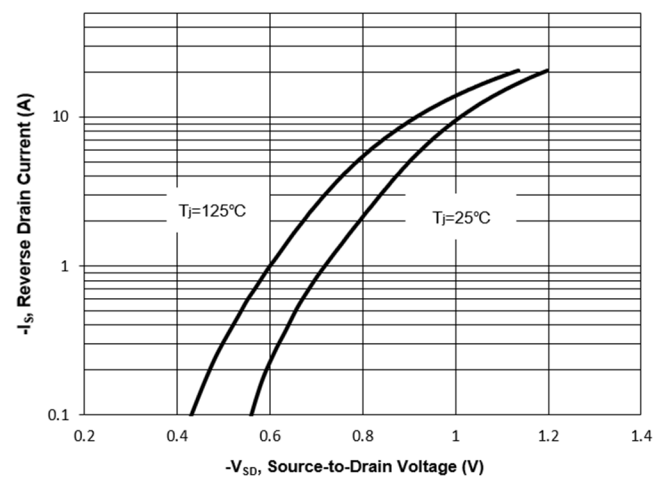


Fig. 6 Typical Forward Characteristics



Electrical Characteristics Curves

Fig. 7 Typical Junction Capacitance

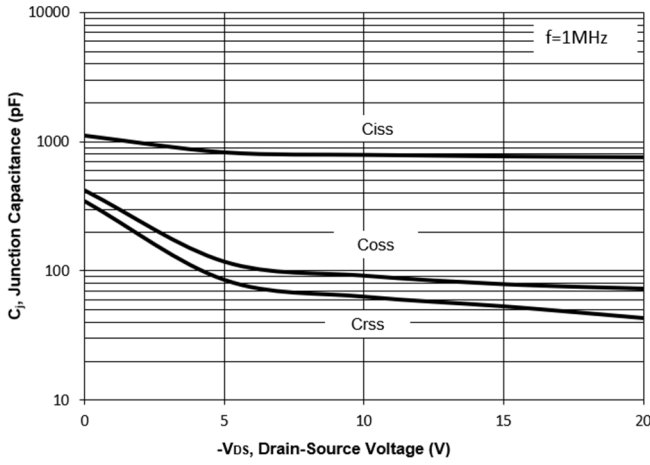


Fig. 8 Drain-Source Leakage Current vs. T_J

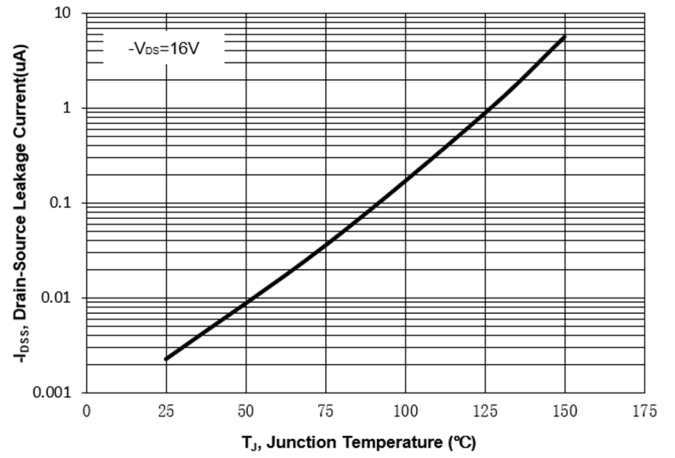


Fig. 9 V_{(BR)DSS} vs. Junction Temperature

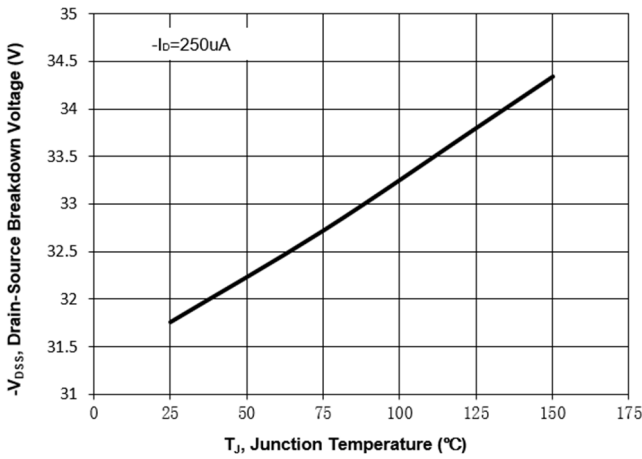


Fig. 10 Gate Threshold Variation vs. T_J

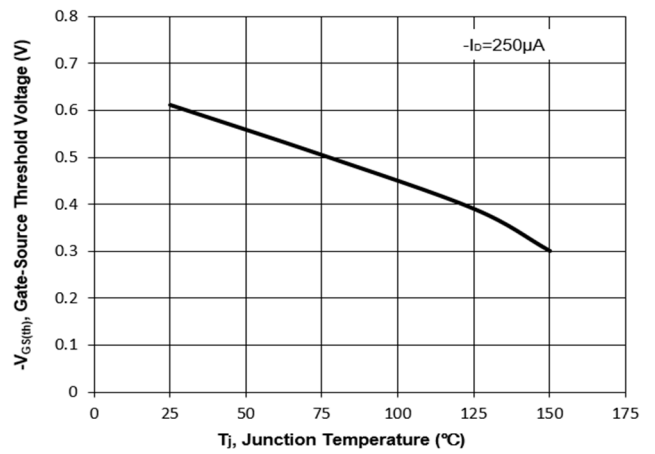
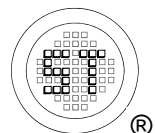
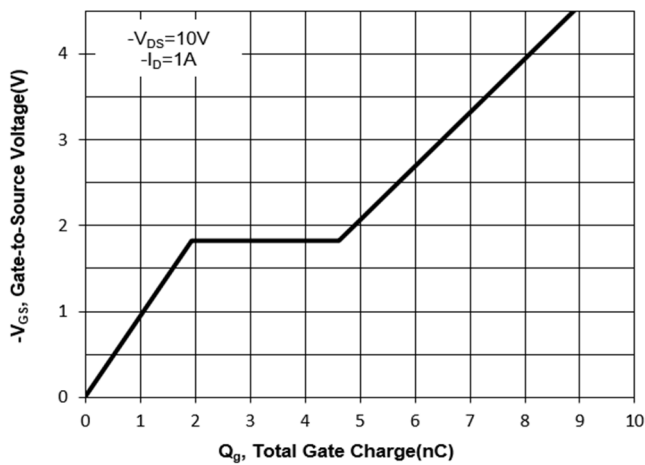


Fig. 11 Gate Charge



Test Circuits

Fig.1-1 Switching times test circuit

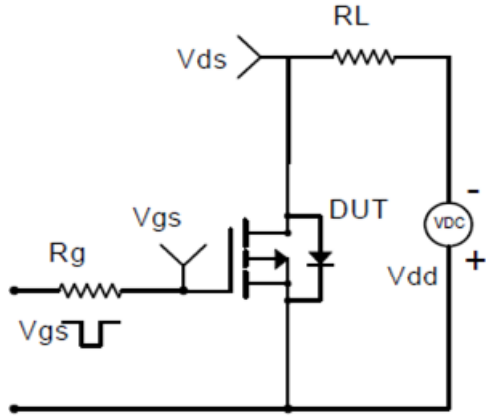


Fig.1-2 Switching Waveform

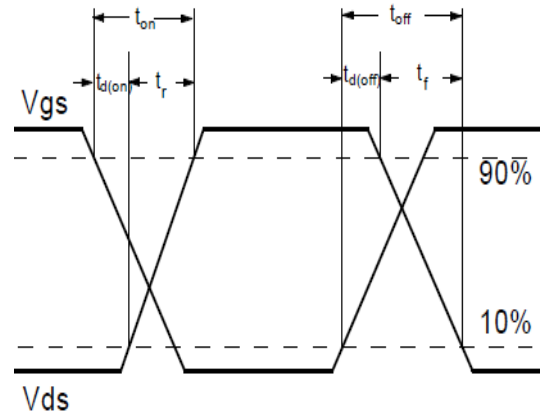


Fig.2-1 Gate charge test circuit

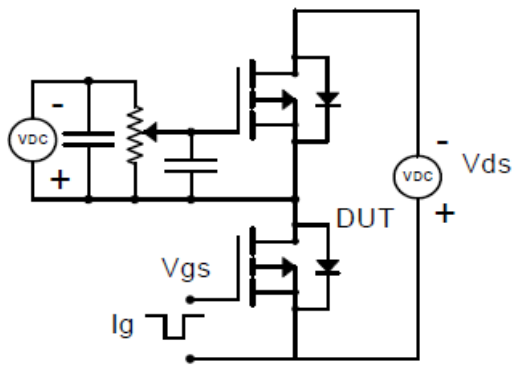
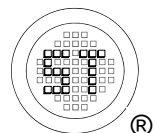
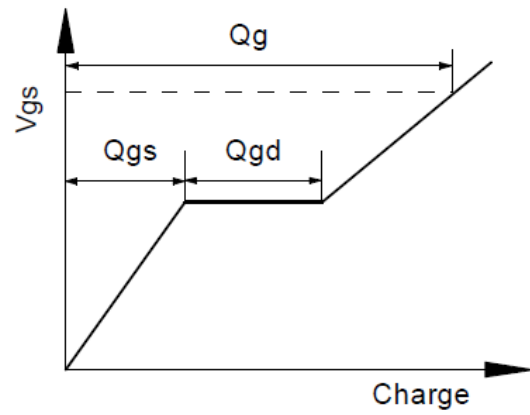


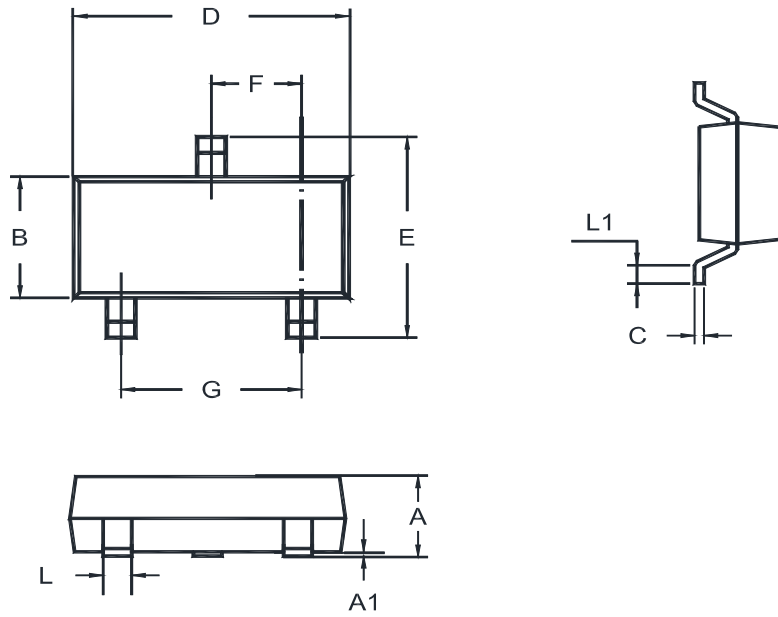
Fig.2-2 Gate charge waveform



MMFTP6401-HAF

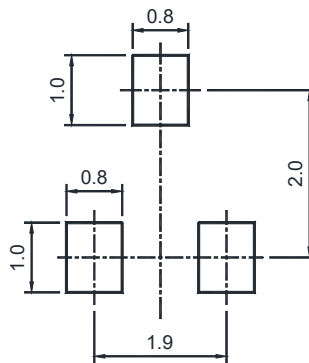
Package Outline (Dimensions in mm)

TO-236



Unit	A	A1	B	C	D	E	F	G	L	L1
mm	1.20	0.100	1.40	0.19	3.04	2.6	1.02	2.04	0.51	0.2
	0.89	0.013	1.20	0.08	2.80	2.2	0.89	1.78	0.37	MIN

Recommended Soldering Footprint

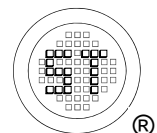
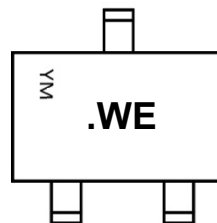


Packing information

Package	Tape Width (mm)	Pitch		Reel Size		Per Reel Packing Quantity
		mm	inch	mm	inch	
TO-236	8	4 ± 0.1	0.157 ± 0.004	178	7	3,000

Marking information

- " WE " = Part No.
- " • " = HAF (Halogen and Antimony Free)
- "YM" = Date Code Marking
- "Y" = Year
- "M" = Month
- Font type: Arial



X-ON Electronics

Largest Supplier of Electrical and Electronic Components

Click to view similar products for [MOSFET](#) category:

Click to view products by [Semtech](#) manufacturer:

Other Similar products are found below :

[614233C](#) [648584F](#) [MCH3443-TL-E](#) [MCH6422-TL-E](#) [NTNS3A92PZT5G](#) [IRFD120](#) [IRFF430](#) [JANTX2N5237](#) [2N7000](#) [AOD464](#)
[2SK2267\(Q\)](#) [2SK2545\(Q,T\)](#) [405094E](#) [423220D](#) [MIC4420CM-TR](#) [VN1206L](#) [614234A](#) [715780A](#) [SSM6J414TU,LF\(T](#) [751625C](#)
[IPS70R2K0CEAKMA1](#) [BSF024N03LT3 G](#) [PSMN4R2-30MLD](#) [TK31J60W5,S1VQ\(O](#) [2SK2614\(TE16L1,Q\)](#) [DMN1017UCP3-7](#)
[EFC2J004NUZTDG](#) [FCAB21350L1](#) [P85W28HP2F-7071](#) [DMN1053UCP4-7](#) [NTE2384](#) [NTE2969](#) [NTE6400A](#) [DMC2700UDMQ-7](#)
[DMN2080UCB4-7](#) [DMN61D9UWQ-13](#) [US6M2GTR](#) [DMN31D5UDJ-7](#) [SSM6P54TU,LF](#) [DMP22D4UFO-7B](#) [IPS60R3K4CEAKMA1](#)
[DMN1006UCA6-7](#) [DMN16M9UCA6-7](#) [STF5N65M6](#) [IRF40H233XTMA1](#) [IPSA70R950CEAKMA1](#) [IPSA70R2K0CEAKMA1](#) [STU5N65M6](#)
[C3M0021120D](#) [DMN6022SSD-13](#)