

## POWER DISCRETES

### Description

Quick reference data

$$V_R = 800 \text{ \& } 1000V$$

$$I_F = 1.8A$$

$$t_{rr} = 300nS$$

$$I_R = 1\mu A$$

### Features

- ◆ Low reverse recovery time
- ◆ Glass passivated for hermetic sealing
- ◆ Low switching losses
- ◆ Soft, non-snap off, recovery characteristic
- ◆ Avalanche capability

## Absolute Maximum Ratings

Electrical specifications @  $T_A = 25^\circ C$  unless otherwise specified.

	Symbol	PF8	PF0	Units
Working Reverse Voltage	$V_{RWM}$	800	1000	V
Repetitive Reverse Voltage	$V_{RRM}$	800	1000	V
Surge Reverse Voltage	$V_{RSM}$	900	1100	V
Average Forward Current @ $55^\circ C$ , lead length 0.375"	$I_{F(AV)}$	1.8		A
Non-Repetitive Surge Current ( $t_p = 8.3mS$ @ $V_R$ & $T_{JMAX}$ )	$I_{FSM}$	50		A
Storage Temperature Range	$T_{STG}$	-55 to +175		$^\circ C$

**POWER DISCRETES**
**Electrical Specifications**

 Electrical specifications @  $T_A = 25^\circ\text{C}$  unless otherwise specified.

	Symbol	PF8/PF0	Units
Average Forward Current max. (pcb mounted)	$I_{F(AV)}$	0.85	A
Average Forward Current max. L = 10mm	$I_{F(AV)}$	1.8	A
Forward Voltage Drop max. @ $I_F = 1.5\text{A}$ , $T_J = 25^\circ\text{C}$	$V_F$	1.35	V
Reverse Current max. @ $V_{RWM}$ , $T_J = 25^\circ\text{C}$ @ $V_{RWM}$ , $T_J = 100^\circ\text{C}$	$I_R$ $I_R$	1 15	$\mu\text{A}$
Reverse Recovery Time max. 0.5A $I_F$ to 1.0A $I_{RM}$ recovers to 0.25mA $I_{RM(REC)}$	trr	300	nS
Junction Capacitance typ. @ $V_R = 5\text{V}$ , $f = 1\text{MHz}$	$C_j$	18	pF

**Thermal Characteristics**

	Symbol	PF8/PF0	Units
Thermal Resistance-Junction to Lead Lead length = 0" Lead length = 0.375"	$R_{\theta JL}$	19 47	$^\circ\text{C/W}$

**POWER DISCRETES**

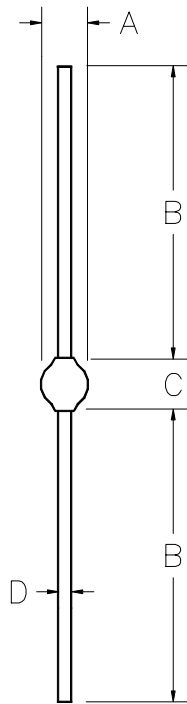
**Ordering Information**

Part Number	Description
PF8/PF0	Axial leaded hermetically sealed <sup>(1)</sup>

Note:

(1) Available in bulk and tape and reel packaging. Please consult factory for quantities.

**Outline Drawing**



Dimensions					
DIM <sup>N</sup>	Inches		Millimeters		Note
	MIN	MAX	MIN	MAX	
A	-	0.150	-	3.81	-
B	1.014	-	26	-	-
C	-	0.180	-	4.57	-
D	-	0.032	-	0.82	-

Weight = 369mg

**Contact Information**

Semtech Corporation  
 Power Discrettes Products Division  
 200 Flynn Road, Camarillo, CA 93012  
 Phone: (805)498-2111 FAX (805)498-3804

## X-ON Electronics

Largest Supplier of Electrical and Electronic Components

*Click to view similar products for [Rectifiers](#) category:*

*Click to view products by [Semtech](#) manufacturer:*

Other Similar products are found below :

[70HFR40](#) [RL252-TP](#) [150KR30A](#) [1N5397](#) [NTE5841](#) [NTE6038](#) [SCF5000](#) [1N4002G](#) [1N4005-TR](#) [JANS1N6640US](#) [481235F](#)  
[RRE02VS6SGTR](#) [067907F](#) [MS306](#) [70HF40](#) [T110HF60](#) [T85HFL60S02](#) [US2JFL-TP](#) [A1N5404G-G](#) [CRS04\(T5L,TEMQ\)](#) [ACGRA4007-HF](#)  
[ACGRB207-HF](#) [CLH03\(TE16L,Q\)](#) [ACGRC307-HF](#) [ACEFC304-HF](#) [NTE6356](#) [NTE6359](#) [NTE6002](#) [NTE6023](#) [NTE6039](#) [NTE6077](#)  
[85HFR60](#) [40HFR60](#) [1N1186RA](#) [70HF120](#) [85HFR80](#) [D126A45C](#) [SCF7500](#) [D251N08B](#) [SCHJ22.5K](#) [SM100](#) [SCPA2](#) [SCH10000](#) [SDHD5K](#)  
[VS-12FL100S10](#) [ACGRA4001-HF](#) [D1821SH45T PR](#) [D1251S45T](#) [NTE5990](#) [NTE6358](#)