



Quick Start Guide EK-P4

Quick Start Guide EK-P4

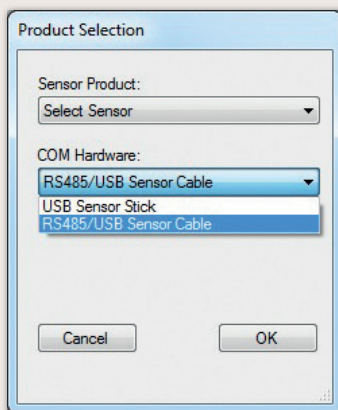
1 Install FTDI USB driver for the sensor cable.
(<http://www.ftdichip.com/Drivers/VCP.htm>)

2 Install software after download from: www.sensirion.com/USB-viewer

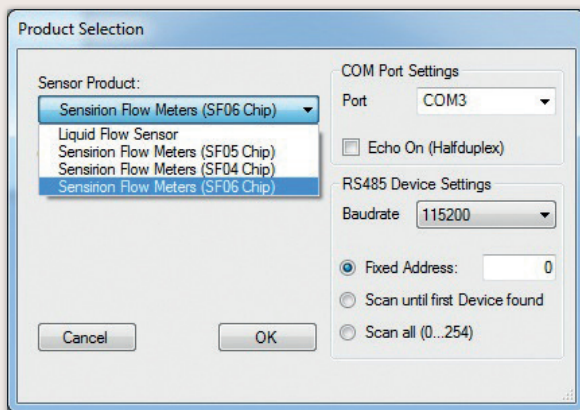
3 Connect the USB sensor cable to the sensor PCB and the PC.

4 Start up the USB RS485 Sensor Viewer.

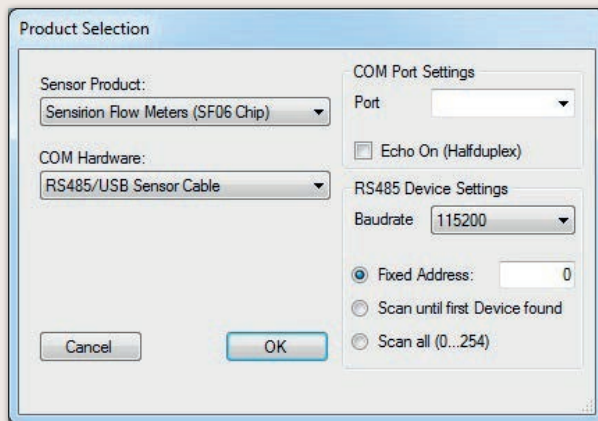
5 Under COM Hardware, select «RS485/USB Sensor cable».



6 Select the sensor product «Sensirion Flow Meters (SF06 Chip)».

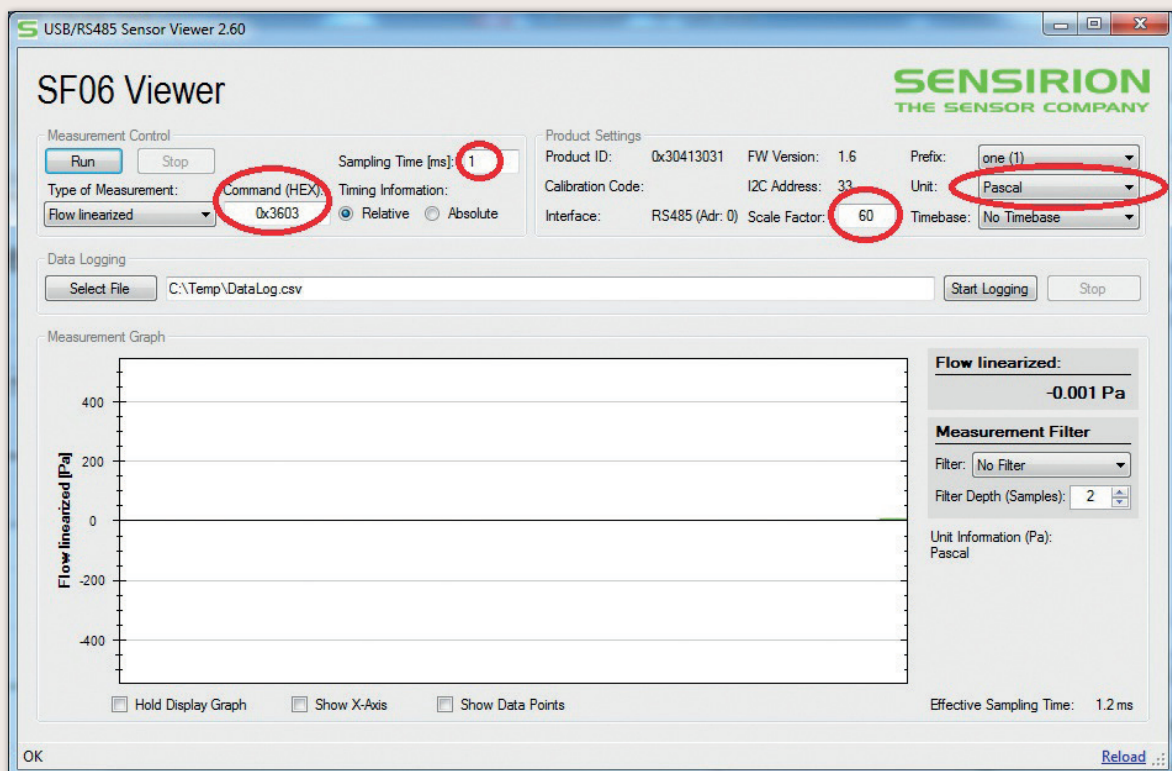


7 Select **COM port** and press «OK». Highest COM port is most often correct.



8 The SF06 Viewer appears. Adjust the **following settings** first:

- Change units to «Pascal».
- Set scale factor to 60.
- Set sampling time to 1ms or more.
- Enter command HEX 0x3603.



9 Press «Run».

For more information about Sensirion's differential pressure sensors of the SDP3x series, please visit www.sensirion.com/sdp3x or contact our technical customer support team:

SENSIRION AG

Laubisruetistrasse 50

8712 Staefa

Switzerland

Phone + 41 44 306 40 00

Fax + 41 44 306 40 30

info@sensirion.com

www.sensirion.com

X-ON Electronics

Largest Supplier of Electrical and Electronic Components

Click to view similar products for [Pressure Sensor Development Tools](#) category:

Click to view products by [Sensirion](#) manufacturer:

Other Similar products are found below :

[MPRSS0001PG00001CB](#) [1075](#) [MIKROE-2293](#) [166](#) [SEN0068](#) [EVALSHNBV01TOBO1](#) [MIKROE-2550](#) [SEN-09673](#) [SEN0066](#)
[DPP101G000](#) [DPP901G000](#) [2651](#) [3965](#) [4258](#) [4414](#) [4494](#) [4633](#) [4816](#) [NPA-201-EV](#) [EVAL-CN0295-EB1Z](#) [SEN0251](#)
[MPRLS0001PG0000SAB](#) [MPRLS0015PA0000SAB](#) [MPRLS0025PA00001AB](#) [MPRLS0300YG00001BB](#) [SEK001](#) [KP254PS2GOKITTOBO1](#)
[KP215F1701PS2GOKITTOBO1](#) [KP236PS2GOKITTOBO1](#) [KP275PS2GOKITTOBO1](#) [MAXREFDES82#](#) [DPP101A000](#) [MERITREK](#)
[MIKROE-3328](#) [MIKROE-3411](#) [MIKROE-3466](#) [MIKROE-3566](#) [MIKROE-3603](#) [MIKROE-4127](#) [MIKROE-4142](#) [MIKROE-4149](#) [MIKROE-](#)
[4190](#) [MIKROE-4294](#) [MIKROE-1489](#) [MIKROE-1817](#) [MIKROE-1880](#) [MIKROE-2065](#) [MIKROE-2237](#) [MIKROE-3020](#) [MIKROE-3030](#)