

Features

- ❑ Transient protection for high-speed data lines
 - IEC 61000-4-2 (ESD) ±15kV (Air)
 - ±8kV (Contact)
 - IEC 61000-4-4 (EFT) 40A (5/50 ns)
 - Cable Discharge Event (CDE)
- ❑ Package optimized for high-speed lines
- ❑ Ultra-small package (0.6mm×0.3mm×0.3mm)
- ❑ Protects one data, control or power line
- ❑ Low capacitance: 4.0 pF (Typical)
- ❑ Low leakage current: 0.1uA @ V_{RWM} (Typical)
- ❑ Low clamping voltage
- ❑ Each I/O pin can withstand over 1000 ES
D strikes for ±8kV contact discharge
- ❑ ROHS compliant

Description

TT2401MAX is a low-capacitance Transient Voltage Suppressor (TVS) designed to provide electrostatic discharge (ESD) protection for high-speed data interfaces. With typical capacitance of 4.0 pF only, TT2401MAX is designed to protect parasitic-sensitive systems against over-voltage and over-current transient events. It complies with IEC 61000-4-2 (ESD), Level 4 (±15kV air, ±8kV contact discharge), IEC 61000-4-4 (electrical fast transient - EFT) (40A, 5/50 ns), very fast charged device model (CDM) ESD and cable discharge event (CDE), etc.

TT2401MAX uses ultra-small DFN0603 package. Each TT2401MAX device can protect one high-speed data line. It offers system designers flexibility to protect single data line where space is a premium concern.

Applications

- ❑ Serial ATA
- ❑ PCI Express
- ❑ Desktops, Servers and Notebooks
- ❑ Cellular Phones
- ❑ MDDI Ports
- ❑ Display Ports
- ❑ Digital Visual Interfaces (DVI)

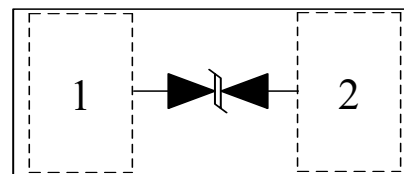
Mechanical Characteristics

- ❑ DFN0603-2L package
- ❑ Flammability Rating: UL 94V-0
- ❑ Marking: Part number
- ❑ Packaging: Tape and Reel

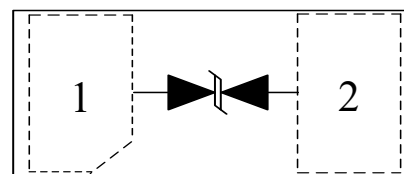
7 fW jh8 jU fUa



D]b'7 cbZ[i fU]cb



OR



DFN0603-2L
(Top View)

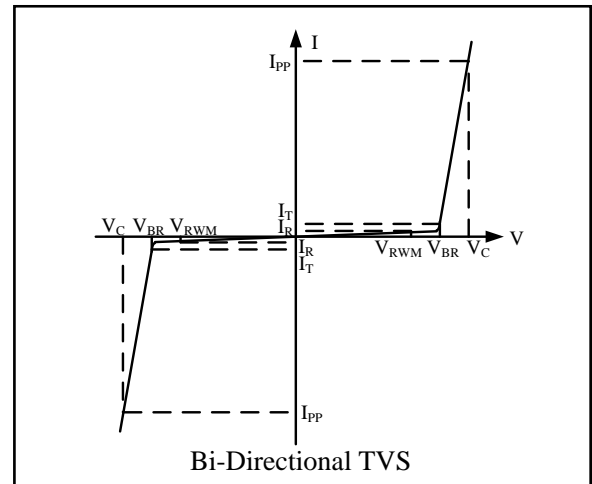
service@jy-electronics.com.cn

Absolute Maximum Rating

Symbol	Parameter	Value	Units
I_{PP}	Peak Pulse Current (8/20 μ s)	1	A
P_{PK}	Peak Pulse Power (8/20 μ s)	30	W
V_{ESD}	ESD per IEC61000-4-2 (Air)	± 10	kV
	ESD per IEC61000-4-2 (Contact)	± 10	
HBM	Human body model	± 2500	V
CDM	Charged device model	± 1000	V
MM	Machine model	± 200	V
T_{OPT}	Operating Temperature	-55/+125	$^{\circ}$ C
T_{STG}	Storage Temperature	-55/+150	$^{\circ}$ C

Electrical Characteristics (T = 25 $^{\circ}$ C)

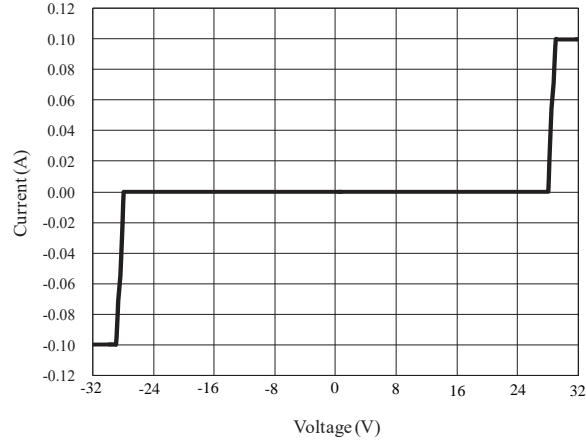
Symbol	Parameter
V_{RWM}	Nominal Reverse Working Voltage
I_R	Reverse Leakage Current @ V_{RWM}
V_{BR}	Reverse Breakdown Voltage @ I_T
I_T	Test Current for Reverse Breakdown
V_C	Clamping Voltage @ I_{PP}
I_{PP}	Maximum Peak Pulse Current
C_{ESD}	Parasitic Capacitance
V_R	Reverse Voltage
f	Small Signal Frequency



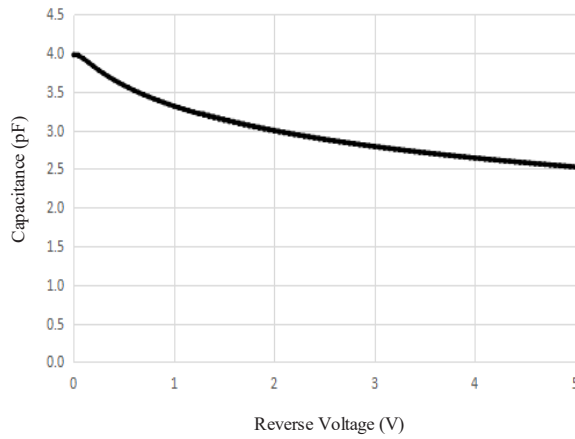
Symbol	Test Condition	Minimum	Typical	Maximum	Units
V_{RWM}				24.0	V
I_R	$V_{RWM} = 24V, T = 25^{\circ}C$ Between I/O and I/O		0.1	1.0	μ A
V_{BR}	$I_T = 1mA$ Between I/O and I/O	26			V
V_C	$I_{PP} = 1A, t_p = 8/20\mu s$ Between I/O and I/O			40	V
C_{ESD}	$V_R = 0V, f = 1MHz$ Between I/O and I/O		4	6	pF



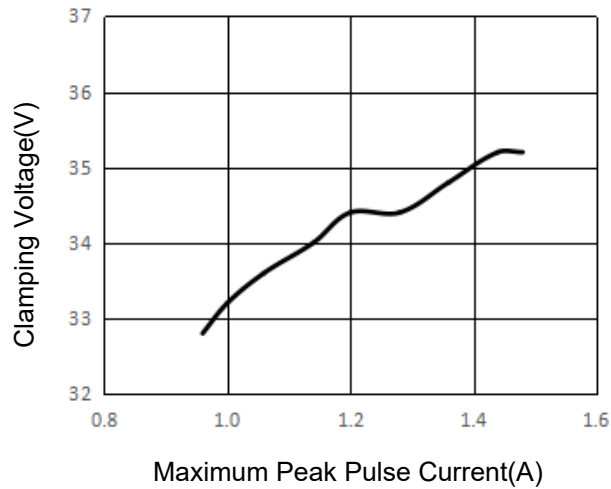
Reverse Current vs. Reverse Voltage



Capacitance vs. Reverse Voltage



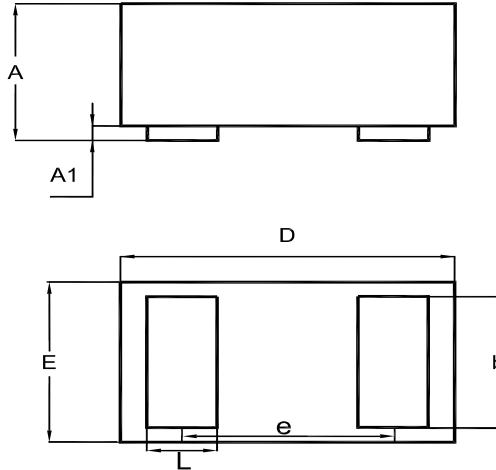
Clamping Voltage vs. Maximum Peak Pulse Current





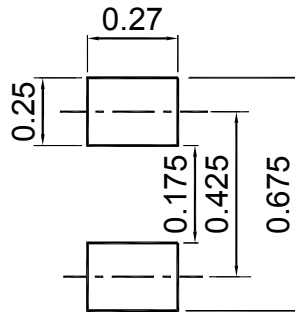
Package Outline

- DFN0603-2L package
- MSL-1



UNIT	A	A1	b	D	E	e	L
mm	0.27	0	0.21	0.57	0.28	0.355	0.14
	0.33	0.025	0.29	0.65	0.35		0.22

Recommended Soldering Footprint

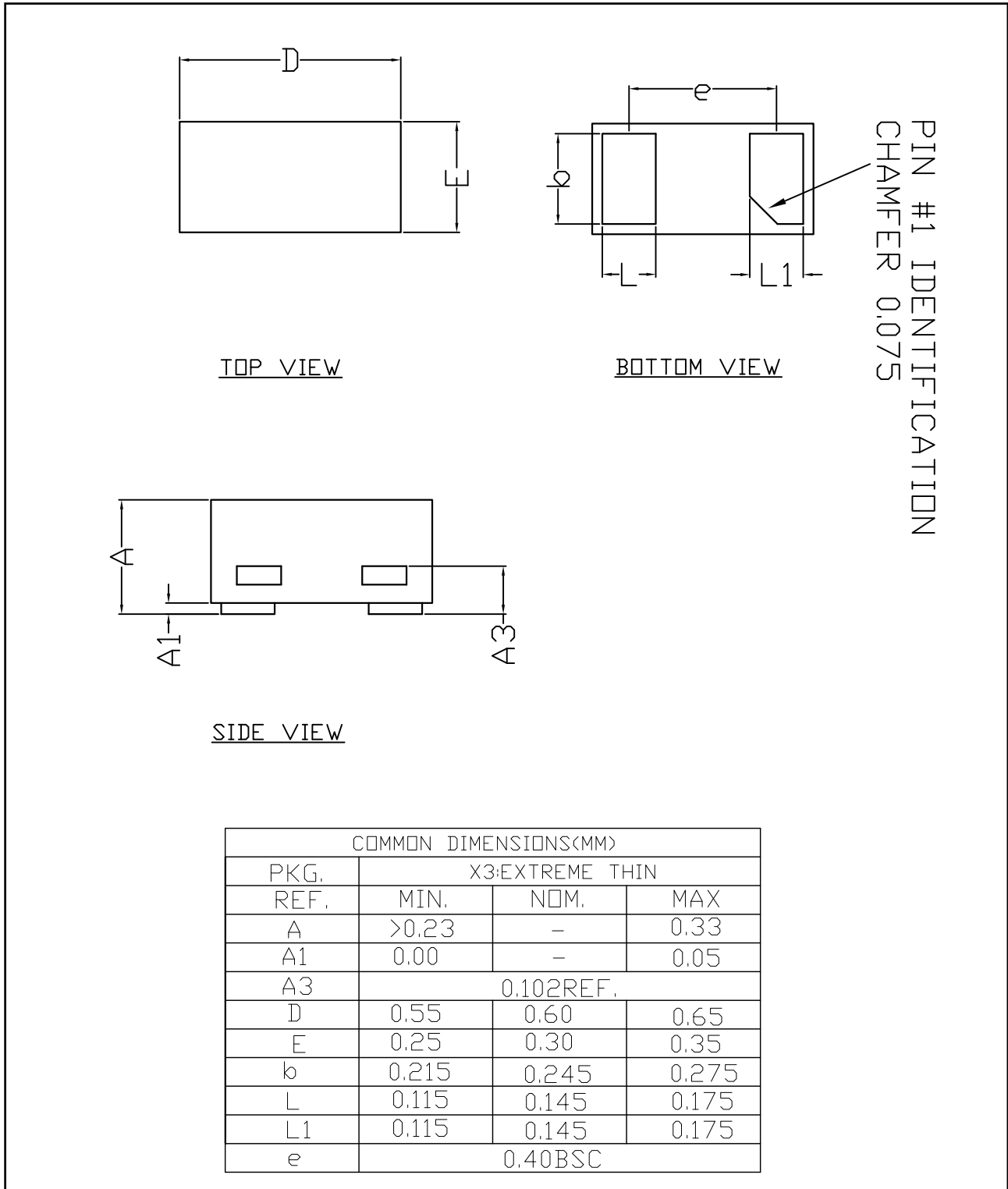


Packing information

Package	Tape Width (mm)	Pitch		Reel Size		Per Reel Packing Quantity
		mm	inch	mm	inch	
DFN0603	8	4 ± 0.1	0.157 ± 0.004	178	7	10,000

Package Outline

- DFN0603 package
- 2 leads
- MSL-1



X-ON Electronics

Largest Supplier of Electrical and Electronic Components

Click to view similar products for [ESD Suppressors / TVS Diodes](#) category:

Click to view products by [Shenzhen JingYang](#) manufacturer:

Other Similar products are found below :

[60KS200C](#) [D18V0L1B2LP-7B](#) [D5V0F4U5P5-7](#) [NTE4902](#) [P4KE27CA](#) [P6KE11CA](#) [P6KE8.2A](#) [SA60CA](#) [SA64CA](#) [SMBJ12CATR](#)
[SMBJ33CATR](#) [SMBJ6.5A](#) [SMBJ8.0A](#) [ESD101-B1-02ELS E6327](#) [ESD112-B1-02EL E6327](#) [ESD7451N2T5G](#) [19180-510](#) [CPDT-5V0USP-](#)
[HF](#) [3.0SMCJ33CA-F](#) [3.0SMCJ36A-F](#) [HSPC16701B02TP](#) [JANTX1N6126A](#) [D3V3Q1B2DLP3-7](#) [D55V0M1B2WS-7](#) [SCM1293A-04SO](#)
[ESD200-B1-CSP0201 E6327](#) [SM12-7](#) [CEN955 W/DATA](#) [VESD12A1A-HD1-GS08](#) [CPDQC5V0-HF](#) [D1213A-01LP4-7B](#) [ESD101-B1-02EL](#)
[E6327](#) [AOZ8808DI-03](#) [5KP15A](#) [5KP48A](#) [5KP90A](#) [ESD3V3D7-TP](#) [15KPA36A-LF](#) [P4KE56CA](#) [P4KE68A](#) [P4KE91CATR](#) [P6KE120A](#)
[P6KE13CA](#) [P6KE43CA](#) [P6KE6.8CA](#) [P6KE8.2](#) [P6SMBJ20CA](#) [JANTX1N6072A](#) [SR2835ESKG](#) [SA90CA](#)