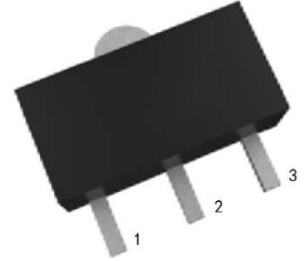


3-Terminal Positive Voltage Regulator

FEATURE

- Maximum output current of 200mA
- Output voltage of 3.3V
- Thermal overload protection
- Short circuit current limiting



1: OUT 2: GND 3: IN
SOT-89 PLASTIC PACKAGE

ABSOLUTE MAXIMUM RATINGS (Operating temperature range applies unless otherwise specified)

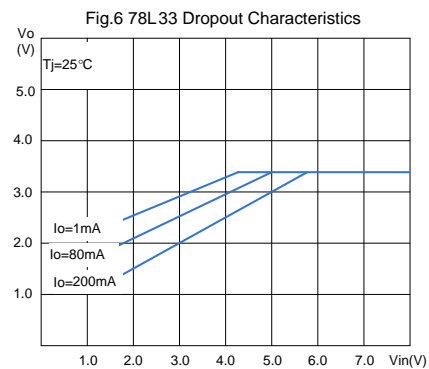
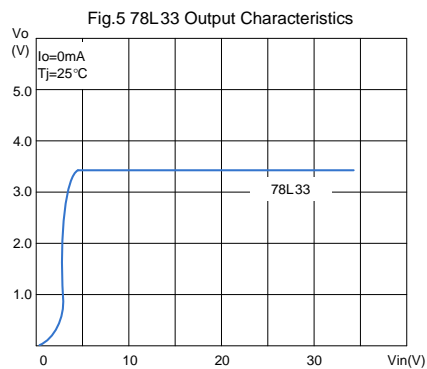
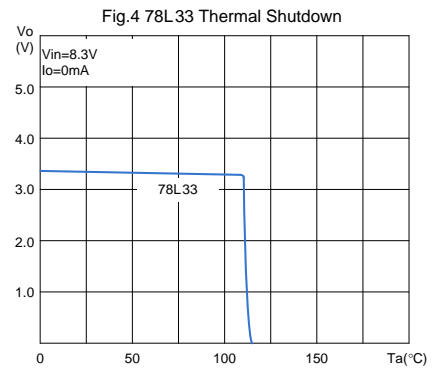
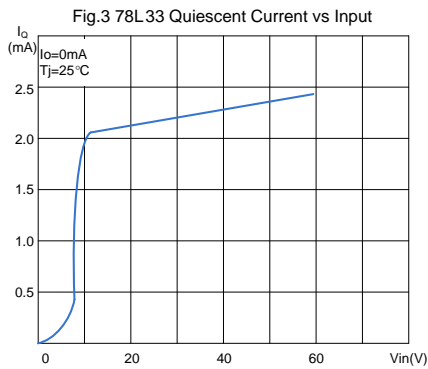
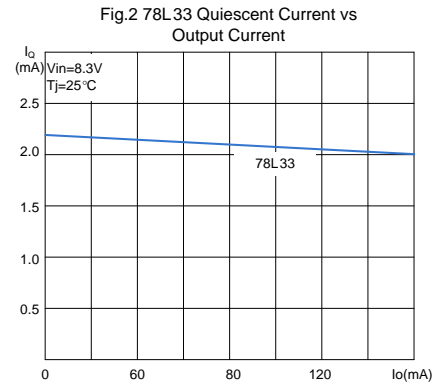
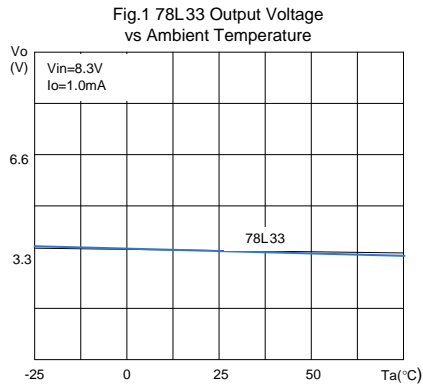
CHARACTERISTICS	SYMBOL	VALUE	UNITS
Input voltage	V _{IN}	30	V
Output Current	I _{OUT}	200	mA
Junction Temperature	T _J	+125	°C
Operating Temperature	T _{OPR}	-20~+120	°C
Storage Temperature Range	T _{STG}	-40~+150	°C

ELECTRICAL CHARACTERISTICS

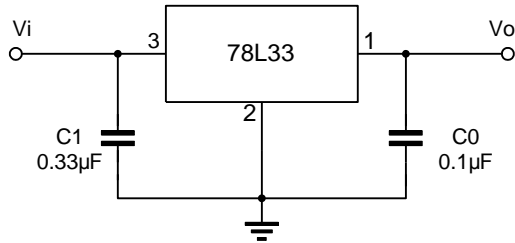
(V_I=8.3V, I_o=80mA, 0<T_j<125°C, C₁=0.33μF, C_o=0.1μF, unless otherwise specified)(Note 1)

Characteristic	Symbol	Test conditions	MIN	TYP	MAX	UNI
Output Voltage	V _O	T _j =25°C	3.168	3.3	3.432	V
		5.3V≤V _I ≤20V, I _O =1mA~80mA	3.135		3.465	V
		I _O =1mA~140mA	3.135		3.465	V (note 2)
Load Regulation	ΔV _o	T _j =25°C, I _O =1mA~200mA		10	60	mV
		T _j =25°C, I _O =1mA~80mA		7	30	mV
Line regulation	ΔV _o	5.3V≤V _I ≤20V, T _j =25°C		7	150	mV
		6.3V≤V _I ≤20V, T _j =25°C		4	100	mV
Quiescent Current	I _q	T _j =25°C		2.0	5.5	mA
Quiescent Current Change	ΔI _q	6.3V≤V _I ≤20V			1.5	mA
	ΔI _q	1mA≤I _O ≤80mA			0.1	mA
Output Noise Voltage	V _N	10Hz≤f≤100kHz, T _j =25°C		40		μV
Temperature coefficient of V _o	ΔV _o /ΔT	I _o =5mA		0.45		mV/°C
Ripple Rejection	RR	6.3V≤V _I ≤16.3V, f=120Hz, T _j =25°C	40	49		dB
Dropout Voltage	V _d			1.7		V

TYPICAL PERFORMANCE CHARACTERISTICS



TYPICAL APPLICATION

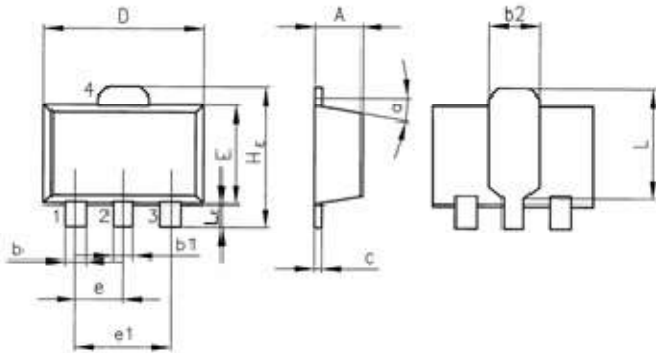


Note 1: The Maximum steady state usable output current and input voltage are very dependent on the heating sinking and/or lead temperature length of the package. The data above represent pulse test conditions with junction temperatures as indicated at the initiation of test.

Note 2: Power dissipation P_D.

Outline Dimension

Unit: mm



SOT-89			
Symbol	min	typ	max
A	1.4	---	1.6
b	0.35	---	0.55
b1	0.4	---	0.65
b2	---	1.6	---
c	0.35	---	0.45
D	4.4	---	4.6
E	2.35	---	2.55
e	---	1.5	---
e1	---	3	---
HE	---	4.15	---
L	---	2.7	---
LE	---	1.0	---
a	---	5°	---

X-ON Electronics

Largest Supplier of Electrical and Electronic Components

Click to view similar products for [Linear Voltage Regulators](#) category:

Click to view products by [Shikues](#) manufacturer:

Other Similar products are found below :

[LV56831P-E](#) [LV5684PVD-XH](#) [MCDTSA6-2R](#) [L7815ACV-DG](#) [PQ3DZ53U](#) [LV56801P-E](#) [TLE42794G](#) [L78L05CZ/1SX](#) [L78LR05DL-MA-E](#) [636416C](#) [714954EB](#) [BA033LBSG2-TR](#) [LV5680P-E](#) [L78M15CV-DG](#) [L79M05T-E](#) [TLS202A1MBVHTSA1](#) [L78LR05D-MA-E](#) [NCV317MBTG](#) [NTE7227](#) [LV5680NPVC-XH](#) [LT1054CN8](#) [MP2018GZD-5-Z](#) [MP2018GZD-33-Z](#) [MIC5281-3.3YMM](#) [MC78L06BP-AP](#) [TA48LS05F\(TE85L,F\)](#) [TA78L12F\(TE12L,F\)](#) [TC47BR5003ECT](#) [TCR2LN12,LF\(S](#) [TCR2LN28,LF\(S](#) [TCR2LN30,LF\(S](#) [TCR3DF295,LM\(CT](#) [TCR3DF40,LM\(CT](#) [BA178M20CP-E2](#) [L78M12ABDT](#) [LM7812SX/NOPB](#) [LR645N3-G-P003](#) [LR645N3-G-P013](#) [ZXTR2005P5-13](#) [SCD7812BTG](#) [TCR3DF335,LM\(CT](#) [ZXTR2012K-13](#) [TLE42994E V33](#) [ZXTR2008K-13](#) [ZXTR2005K-13](#) [L88R05DL-E](#) [ADP3300ARTZ-2.7RL7](#) [LM120K-15/883](#) [IFX54441LDVXUMA1](#) [LM317D2T-TR](#)