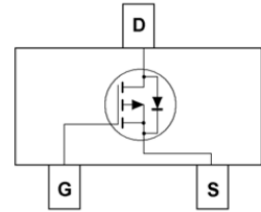
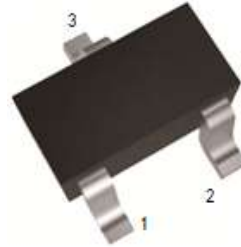


P-Channel Enhancement Mode MOSFET

- -25V/-4.2A, $R_{DS(ON)} = 130\text{m}\Omega(\text{MAX}) @ V_{GS} = -10\text{V}$.
 $R_{DS(ON)} = 150\text{m}\Omega(\text{MAX}) @ V_{GS} = -4.5\text{V}$.
 $R_{DS(ON)} = 180\text{m}\Omega(\text{MAX}) @ V_{GS} = -2.5\text{V}$.
- Super High dense cell design for extremely low $R_{DS(ON)}$
- Reliable and Rugged
- SC-59 for Surface Mount Package

Applications

- Power Management
 Portable Equipment and Battery Powered Systems.



1 : Gate 2 : Source 3 : Drain

Absolute Maximum Ratings $T_A = 25^\circ\text{C}$ Unless Otherwise noted

Parameter	Symbol	Limit	Units
Drain-Source Voltage	V_{DS}	-25	V
Gate-Source Voltage	V_{GS}	± 12	V
Drain Current-Continuous	I_D	-4.2	A

Electrical Characteristics $T_A = 25^\circ\text{C}$ Unless Otherwise noted

Parameter	Symbol	Test Conditions	Min	Typ.	Max	Units
Off Characteristics						
Drain to Source Breakdown Voltage	BVDSS	$V_{GS} = 0\text{V}, I_D = -250\mu\text{A}$	-25	-	-	V
Zero-Gate Voltage Drain Current	IDSS	$V_{DS} = -24\text{V}, V_{GS} = 0\text{V}$	-	-	-1	μA
Gate Body Leakage Current, Forward	IGSSF	$V_{GS} = 12\text{V}, V_{DS} = 0\text{V}$	-	-	100	nA
Gate Body Leakage Current, Reverse	IGSSR	$V_{GS} = -12\text{V}, V_{DS} = 0\text{V}$	-	-	-100	nA
On Characteristics						
Gate Threshold Voltage	$V_{GS(th)}$	$V_{GS} = V_{DS}, I_D = -250\mu\text{A}$	-0.7	-	-1.3	V
Static Drain-source On-Resistance	$R_{DS(ON)}$	$V_{GS} = -10\text{V}, I_D = -4.2\text{A}$	-	-	130	$\text{m}\Omega$
		$V_{GS} = -4.5\text{V}, I_D = -4.0\text{A}$	-	-	150	$\text{m}\Omega$
		$V_{GS} = -2.5\text{V}, I_D = -1.0\text{A}$	-	-	180	$\text{m}\Omega$
Drain-Source Diode Characteristics and Maximum Ratings						
Drain-Source Diode Forward Voltage	VSD	$V_{GS} = 0\text{V}, I_S = -1.0\text{A}$			-1.0	V

Typical Characteristics

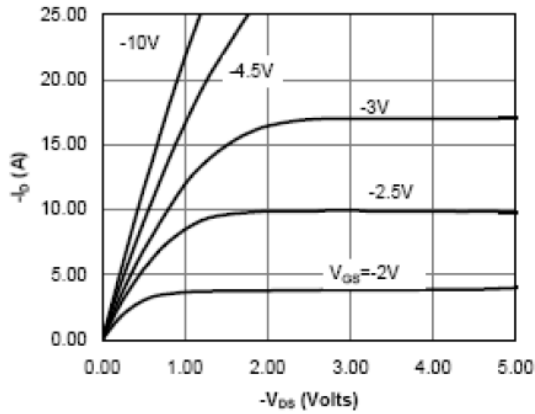


Fig 1: On-Region Characteristics

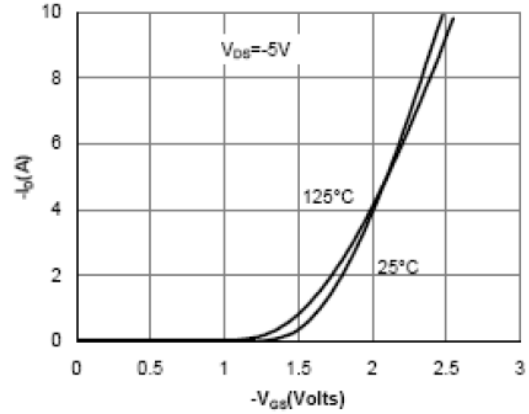


Figure 2: Transfer Characteristics

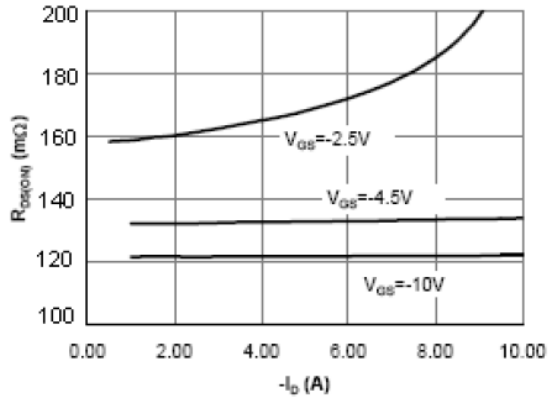


Figure 3: On-Resistance vs. Drain Current and Gate Voltage

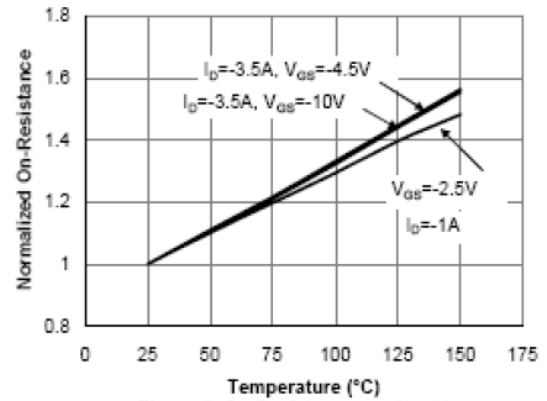


Figure 4: On-Resistance vs. Junction Temperature

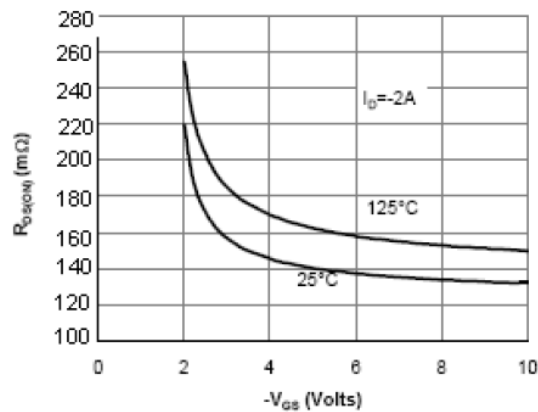


Figure 5: On-Resistance vs. Gate-Source Voltage

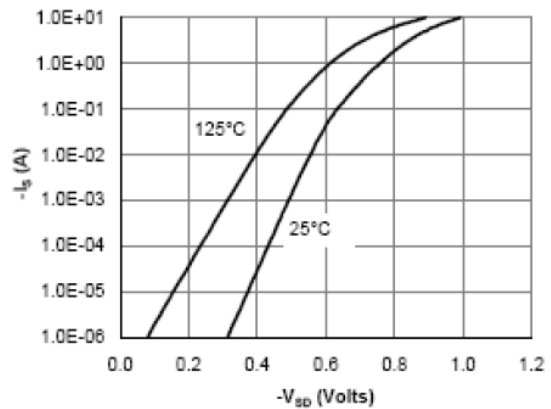
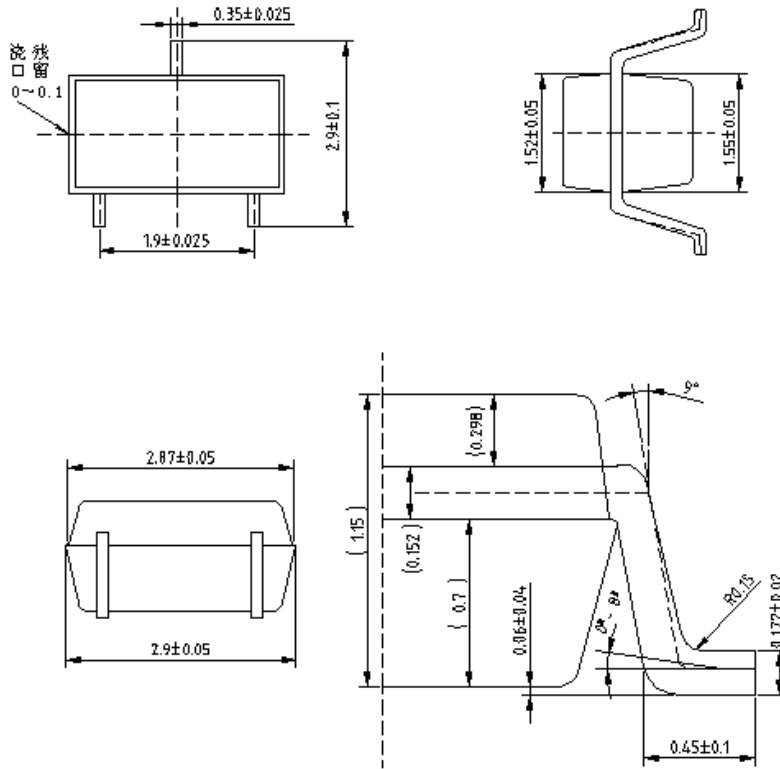


Figure 6: Body-Diode Characteristics

Package Outline Dimensions (UNIT: mm) SC-59



X-ON Electronics

Largest Supplier of Electrical and Electronic Components

Click to view similar products for [MOSFET](#) category:

Click to view products by [Shikues](#) manufacturer:

Other Similar products are found below :

[614233C](#) [648584F](#) [MCH3443-TL-E](#) [MCH6422-TL-E](#) [FDPF9N50NZ](#) [FW216A-TL-2W](#) [FW231A-TL-E](#) [APT5010JVR](#) [NTNS3A92PZT5G](#)
[IRF100S201](#) [JANTX2N5237](#) [2SK2464-TL-E](#) [2SK3818-DL-E](#) [FCA20N60_F109](#) [FDZ595PZ](#) [STD6600NT4G](#) [FSS804-TL-E](#) [2SJ277-DL-E](#)
[2SK1691-DL-E](#) [2SK2545\(Q,T\)](#) [D2294UK](#) [405094E](#) [423220D](#) [MCH6646-TL-E](#) [TPCC8103,L1Q\(CM](#) [367-8430-0972-503](#) [VN1206L](#)
[424134F](#) [026935X](#) [051075F](#) [SBVS138LT1G](#) [614234A](#) [715780A](#) [NTNS3166NZT5G](#) [751625C](#) [873612G](#) [IRF7380TRHR](#)
[IPS70R2K0CEAKMA1](#) [RJK60S3DPP-E0#T2](#) [RJK60S5DPK-M0#T0](#) [APT5010JVFR](#) [APT12031JFLL](#) [APT12040JVR](#) [DMN3404LQ-7](#)
[NTE6400](#) [JANTX2N6796U](#) [JANTX2N6784U](#) [JANTXV2N5416U4](#) [SQM110N05-06L-GE3](#) [SIHF35N60E-GE3](#)