

## ● FEATURES

- Extremely low  $V_F$ .
- Low stored charge, majority carrier conduction.
- Low power loss/high efficient

## ● APPLICATIONS

- For Use In Low Voltage, High Frequency Inverters.
- Free Wheeling, And Polarity Protection Applications.

## ● ORDERING INFORMATION



Type No.	Marking	Package Code
B5817WS	SJ	SOD-323
B5818WS	SK	SOD-323
B5819WS	SL	SOD-323

## ● MAXIMUM RATING @ $T_a=25^{\circ}\text{C}$ unless otherwise specified

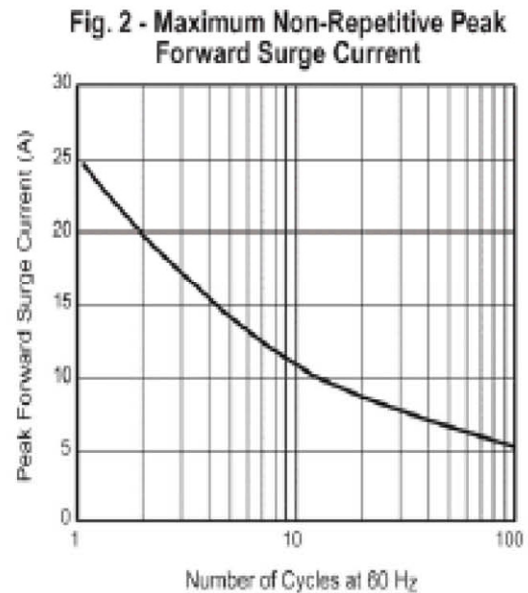
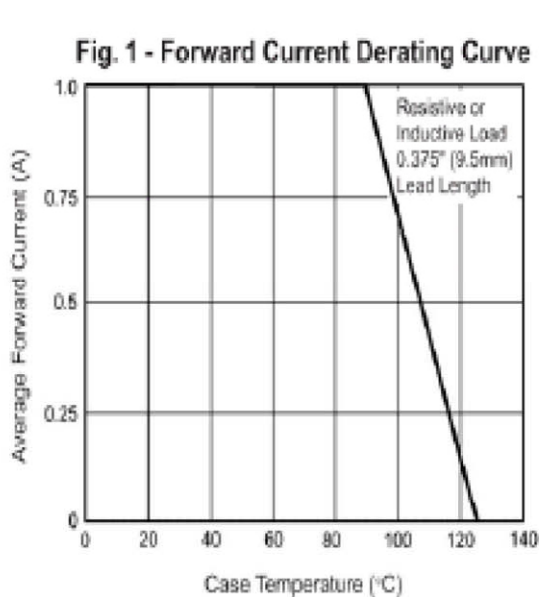
Parameter	symbol	B5817WS	B5818WS	B5819WS	Unit
Non-Repetitive Peak reverse voltage	$V_{RM}$	20	30	40	V
Peak repetitive Peak reverse voltage	$V_{RRM}$				
Working Peak Reverse voltage	$V_{RWM}$	20	30	40	V
DC Reverse Voltage	$V_R$				
RMS Reverse Voltage	$V_{R(RMS)}$	14	21	28	V
Average Rectified output Current	$I_o$	1			A
Peak forward surge current@=8.3ms	$I_{FSM}$	20			A
Power Dissipation	$P_d$	250			mW
Thermal Resistance Junction to Ambient	$R_{\theta JA}$	500			$^{\circ}\text{C}/\text{W}$
Storage temperature	$T_{STG}$	-65~+150			$^{\circ}\text{C}$



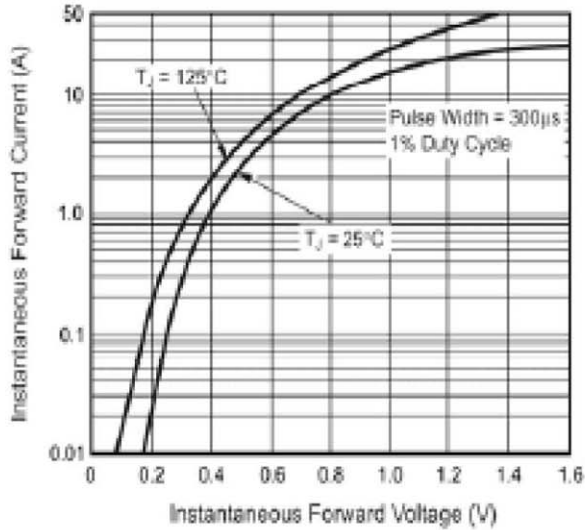
● ELECTRICAL CHARACTERISTICS @ Ta=25°C unless otherwise specified

Parameter	Symbol	Test Condition	MIN	MAX	UNIT
Reverse breakdown voltage	$V_{(BR)}$	$I_R=1mA$	B5817WS	20	V
			B5818WS	30	
			B5819WS	40	
Reverse voltage leakage current	$I_R$	$V_R=20V$	B5817WS	1	mA
		$V_R=30V$	B5818WS		
		$V_R=40V$	B5819WS		
Forward voltage	$V_F$	B5817WS	$I_F=1A$	0.45	V
			$I_F=3A$	0.75	
		B5818WS	$I_F=1A$	0.55	
			$I_F=3A$	0.875	
		B5819WS	$I_F=1A$	0.6	
			$I_F=3A$	0.9	
Diode capacitance	$C_D$	$V_R=4V, f=1MHz$		120	pF

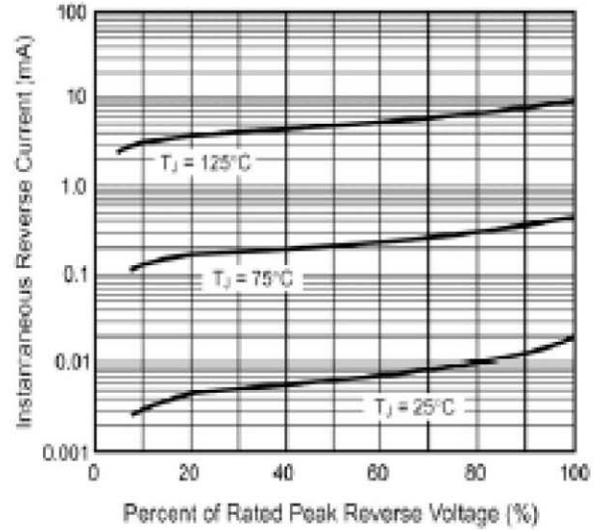
● TYPICAL CHARACTERISTICS @ Ta=25°C unless otherwise specified



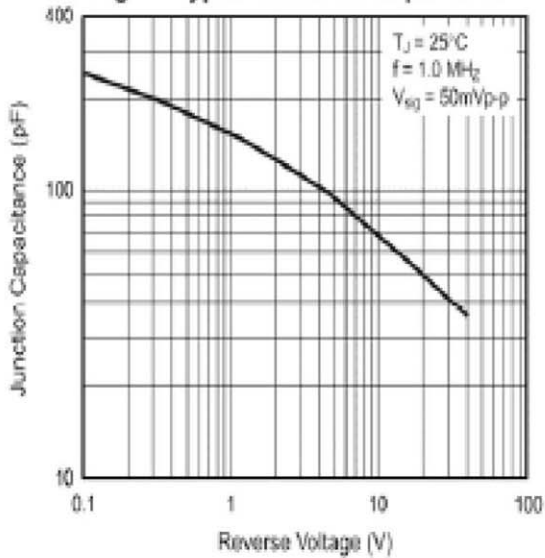
**Fig. 3 - Typical Instantaneous Forward Characteristics**



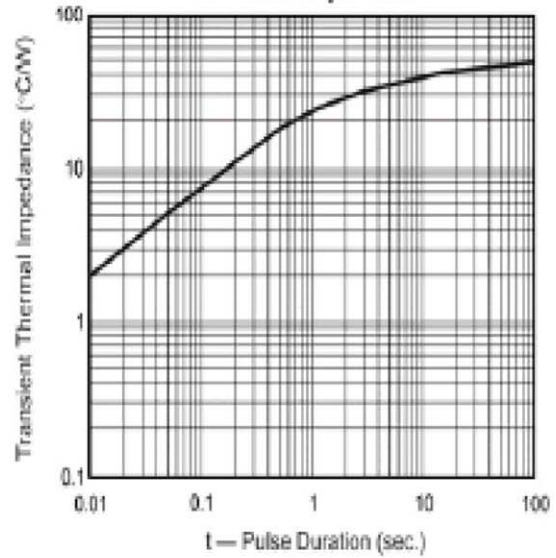
**Fig. 4 - Typical Reverse Characteristics**



**Fig. 5 - Typical Junction Capacitance**

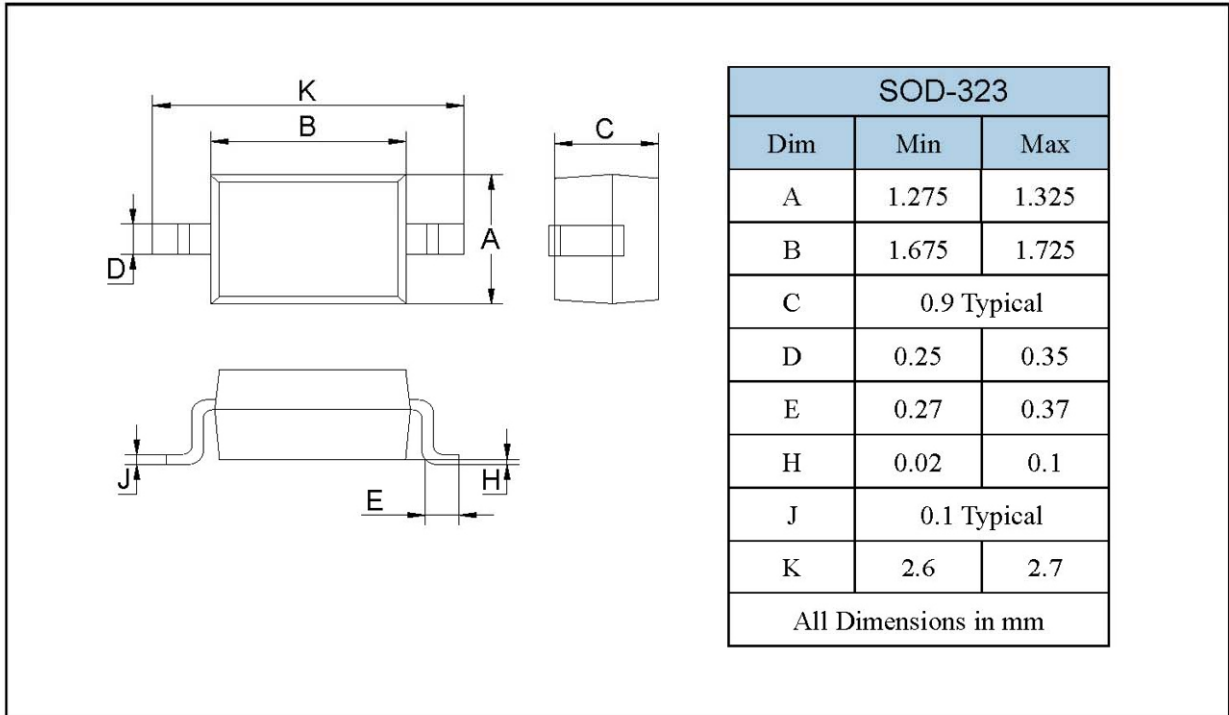


**Fig. 6 - Typical Transient Thermal Impedance**

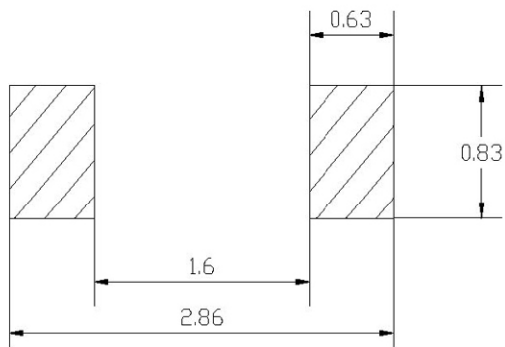


## PACKAGE OUTLINE

Plastic surface mounted package



## SOLDERING FOOTPRINT



Unit : mm

## PACKAGE INFORMATION

Device	Package	Shipping
B5817WS-B5819WS	SOD-323	3000/Tape&Reel



## X-ON Electronics

Largest Supplier of Electrical and Electronic Components

*Click to view similar products for [Schottky Diodes & Rectifiers](#) category:*

*Click to view products by [Shikues](#) manufacturer:*

Other Similar products are found below :

[MA4E2039](#) [MA4E2508M-1112](#) [MBR10100CT-BP](#) [MBR1545CT](#) [MMBD301M3T5G](#) [GS1JE-TP](#) [RB160M-50TR](#) [BAS 3010S-02LRH E6327](#)  
[BAT 54-02LRH E6327](#) [NSR05F40QNXT5G](#) [NSVR05F40NXT5G](#) [NTE555](#) [JANS1N6640](#) [SB07-03C-TB-H](#) [SB1003M3-TL-W](#)  
[SBAT54CWT1G](#) [SBM30-03-TR-E](#) [SK310-T](#) [SK33A-TP](#) [SK34B-TP](#) [SS3003CH-TL-E](#) [PDS3100Q-7](#) [GA01SHT18](#) [CRS10I30A\(TE85L,QM](#)  
[MA4E2501L-1290](#) [MBRB30H30CT-1G](#) [BAS 70-02L E6327](#) [DMJ3940-000](#) [SB007-03C-TB-E](#) [SB10015M-TL-E](#) [SB1003M3-TL-E](#) [SK32A-](#)  
[TP](#) [SK33B-TP](#) [SK35A-TP](#) [SK38B-LTP](#) [SK38B-TP](#) [NTE505](#) [NTSB30U100CT-1G](#) [VS-6CWQ10FNHM3](#) [CRG04\(T5L,TEMQ\)](#)  
[ACDBA1100LR-HF](#) [ACDBA1200-HF](#) [ACDBA140-HF](#) [ACDBA2100-HF](#) [ACDBA240-HF](#) [ACDBA3100-HF](#) [CDBQC0530L-HF](#) [BAT54-](#)  
[13-F](#) [ACDBA340-HF](#) [ACDBA260LR-HF](#)