

Silicon Epitaxial Planar Diodes

High Voltage Switching Diode

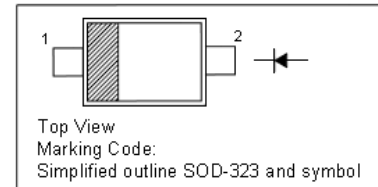
Features

- Fast switching speed
- Surface mount package ideally suited for automatic insertion

| | BAV19WS | BAV20WS | BAV21WS |
|---------|---------|---------|---------|
| MARKING | A8 | T2 | T3 |

PINNING

| PIN | DESCRIPTION |
|-----|-------------|
| 1 | Cathode |
| 2 | Anode |



Absolute Maximum Ratings ($T_a = 25\text{ }^{\circ}\text{C}$)

| Parameter | Symbol | Value | Unit |
|---|--|-------------------|--------------------|
| Repetitive Peak Reverse Voltage | BAV19WS BAV20WS BAV21WS | 120 200 250 | V |
| Reverse Voltage | BAV19WS BAV20WS BAV21WS | 100 150 200 | V |
| Average Rectified Forward Current | $I_{F(AV)}$ | 200 | mA |
| Forward Continuous Current | I_{FM} | 400 | mA |
| Repetitive Peak Forward Current | I_{FRM} | 625 | mA |
| Non-Repetitive Peak Forward Surge Current | at $t = 1\text{ }\mu\text{s}$ at $t = 1\text{ s}$ | 2.5 0.5 | A |
| Power Dissipation | P_{tot} | 200 | mW |
| Operating and Storage Temperature Range | T_j, T_{stg} | - 65 to + 150 | $^{\circ}\text{C}$ |

Characteristics at $T_a = 25\text{ }^{\circ}\text{C}$

| Parameter | Symbol | Min. | Max. | Unit |
|--|-------------------------------|-------------------|-------------------|------|
| Reverse Breakdown Voltage at $I_R = 100\text{ }\mu\text{A}$ | BAV19WS BAV20WS BAV21WS | 120 200 250 | - - - | V |
| Reverse Current at $V_R = 100\text{ V}$ at $V_R = 150\text{ V}$ at $V_R = 200\text{ V}$ | BAV19WS BAV20WS BAV21WS | - - - | 100 100 100 | nA |
| Forward Voltage at $I_F = 100\text{ mA}$ at $I_F = 200\text{ mA}$ | V_F | - - | 1 1.25 | V |
| Total Capacitance at $V_R = 0, f = 1\text{ MHz}$ | C_T | - | 5 | pF |
| Reverse Recovery Time at $I_F = I_R = 30\text{ mA}, I_{RR} = 0.1 \times I_R, R_L = 100\text{ }\Omega$ | t_{rr} | - | 50 | ns |

SHIKE MAKE CONSCIOUS PRODUCT

CONSCIOUS PRODUCTS BEGIN WITH CONSCIOUS PEOPLE

REV.07



www.shike.tw

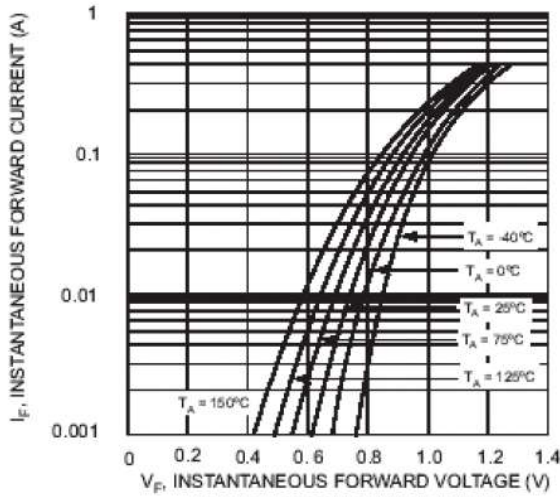


Fig. 1 Typical Forward Characteristics

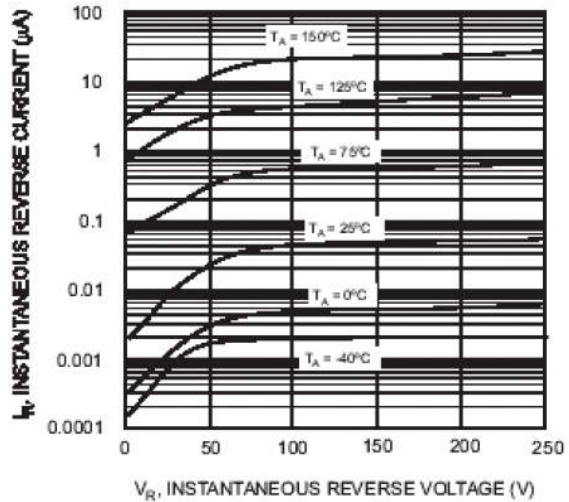


Fig. 2 Typical Reverse Characteristics

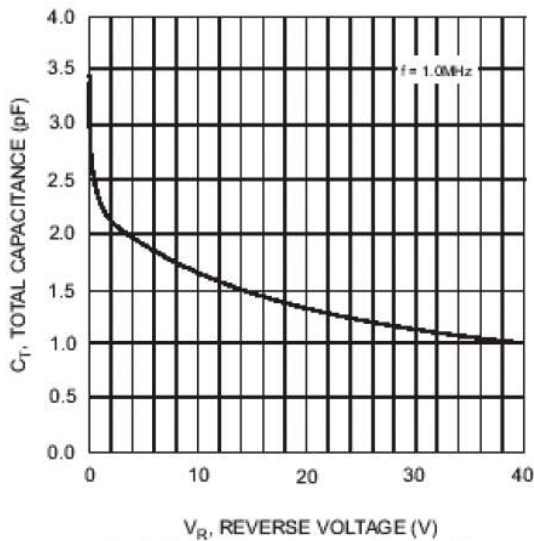


Fig. 3 Typical Capacitance vs. Reverse Voltage

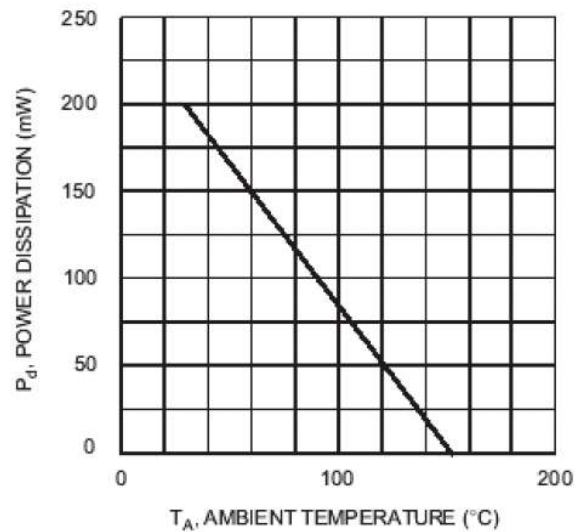


Fig. 4 Power Derating Curve, Total Package

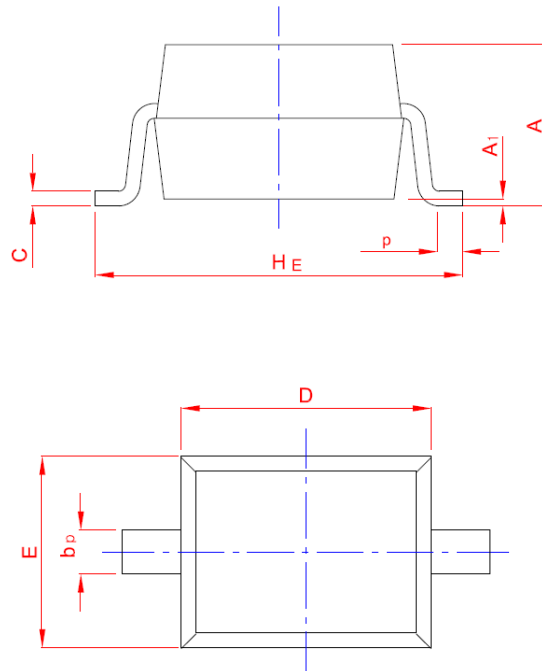
SHIKE MAKE CONSCIOUS PRODUCT
CONSCIOUS PRODUCTS BEGIN WITH CONSCIOUS PEOPLE



PACKAGE OUTLINE

Plastic surface mounted package;

2 leads



| UNIT | A | b _p | C | D | E | H _E | A ₁ | L _p |
|------|------|----------------|------|------|------|----------------|----------------|----------------|
| mm | 1.20 | 0.40 | 0.15 | 1.80 | 1.35 | 2.80 | 0.10 | 0.50 |
| | 0.90 | 0.25 | 0.10 | 1.60 | 1.15 | 2.30 | 0.01 | 0.20 |

SHIKE MAKE CONSCIOUS PRODUCT

CONSCIOUS PRODUCTS BEGIN WITH CONSCIOUS PEOPLE

REV.07



www.shike.tw

X-ON Electronics

Largest Supplier of Electrical and Electronic Components

Click to view similar products for [Diodes - General Purpose, Power, Switching category:](#)

Click to view products by [Shikues manufacturer:](#)

Other Similar products are found below :

[MMBD3004S-13-F](#) [RD0306T-H](#) [DSE010-TR-E](#) [BAV17-TR](#) [BAV19-TR](#) [1N3611](#) [NTE156A](#) [NTE574](#) [NTE6244](#) [1SS181-TP](#) [1SS193,LF](#)
[1SS400CST2RA](#) [SDAA13](#) [SHN2D02FUTW1T1G](#) [LS4151GS08](#) [1N4449](#) [1N456A](#) [1N4934-E3/73](#) [1N914B](#) [1N914BTR](#) [1SS226-TP](#)
[RFUH20TB3S](#) [D291S45T](#) [BAV300-TR](#) [BAW56DWQ-7-F](#) [BAW75-TAP](#) [MM230L-CAA](#) [IDW40E65D1](#) [JAN1N3600](#) [LL4151-GS18](#)
[053684A](#) [SMMSD4148T3G](#) [707803H](#) [NSVDAN222T1G](#) [CDSZC01100-HF](#) [LL4150-M-08](#) [BAV199E6433HTMA1](#) [BAS28-7](#)
[BAW56HDW-13](#) [BAS28 TR](#) [VS-HFA04SD60STR-M3](#) [NSVM1MA152WKT1G](#) [RGP30D-E3/73](#) [BAV99TQ-13-F](#) [BAS21DWA-7](#) [NTE6250](#)
[NTE582-4](#) [NTE582-6](#) [MMDB30-E28X](#) [VS-HFA04SD60SL-M3](#)