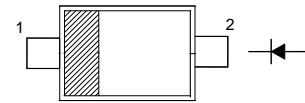


## Silicon Epitaxial Planar Diodes

High Voltage Switching Diode

### Features

- Fast switching speed
- Surface mount package ideally suited for automatic insertion



Top View

1 Cathode 2 Anode

Simplified outline SOD-523 and symbol

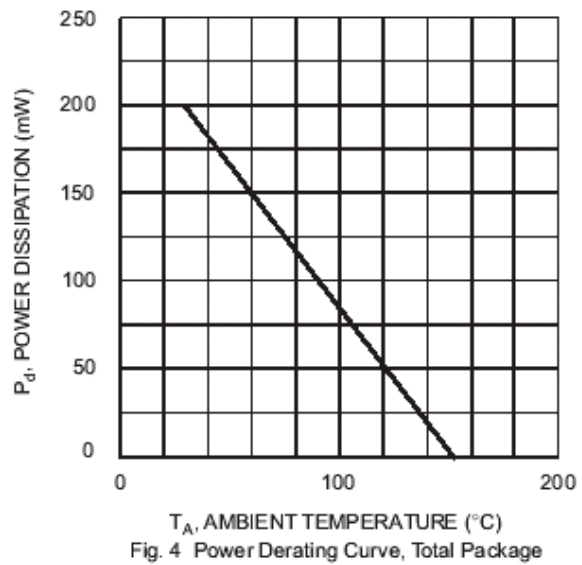
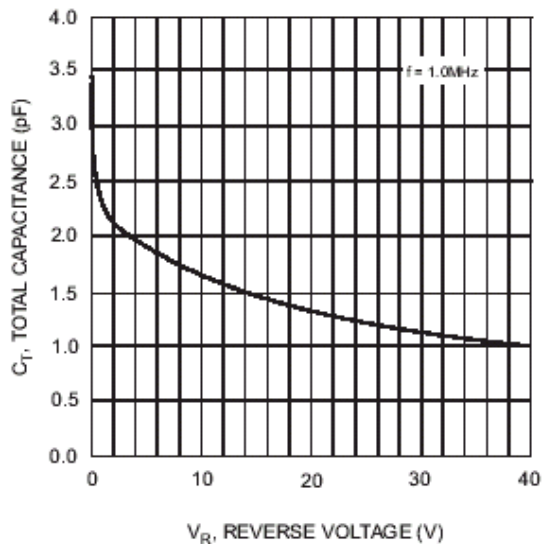
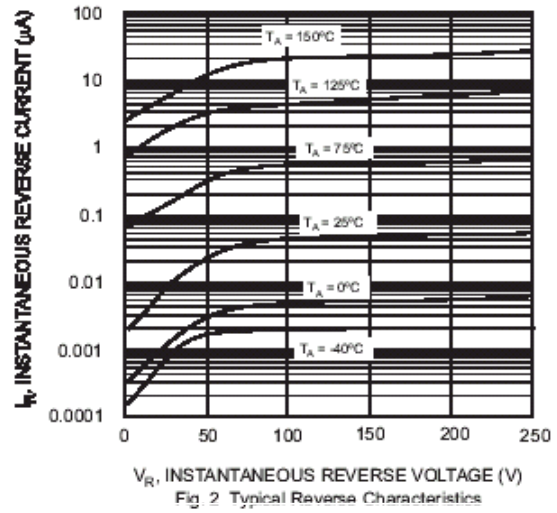
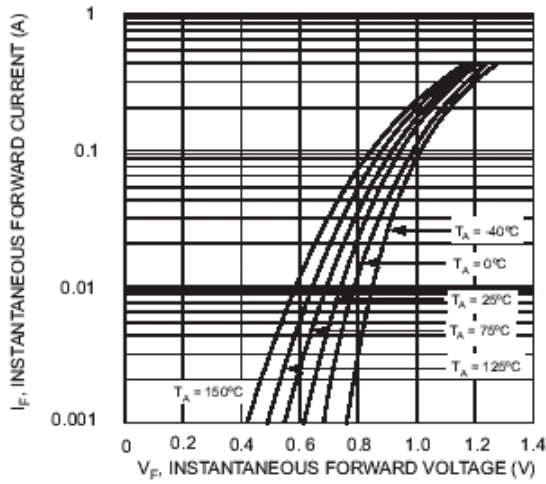
| TYPE    | BAV19WT | BAV20WT | BAV21WT |
|---------|---------|---------|---------|
| MARKING | A8      | T2      | T3      |

### Absolute Maximum Ratings ( $T_a = 25\text{ }^\circ\text{C}$ )

| Parameter                                 | Symbol         | Value                          | Unit             |
|---|----------------|--------------------------------|------------------|
| Repetitive Peak Reverse Voltage           | $V_{RRM}$      | 120                            | V                |
|   |                | 200                            |                  |
|   |                | 250                            |                  |
| Reverse Voltage                           | $V_R$          | 100                            | V                |
|   |                | 150                            |                  |
|   |                | 200                            |                  |
| Average Rectified Forward Current         | $I_{F(AV)}$    | 200                            | mA               |
| Forward Continuous Current                | $I_{FM}$       | 400                            | mA               |
| Repetitive Peak Forward Current           | $I_{FRM}$      | 625                            | mA               |
| Non-Repetitive Peak Forward Surge Current | $I_{FSM}$      | at $t = 1\ \mu\text{s}$<br>2.5 | A                |
|   |                | at $t = 1\ \text{s}$<br>0.5    |                  |
| Power Dissipation                         | $P_{tot}$      | 200                            | mW               |
| Operating and Storage Temperature Range   | $T_j, T_{stg}$ | - 65 to + 150                  | $^\circ\text{C}$ |

### Characteristics at $T_a = 25\text{ }^\circ\text{C}$

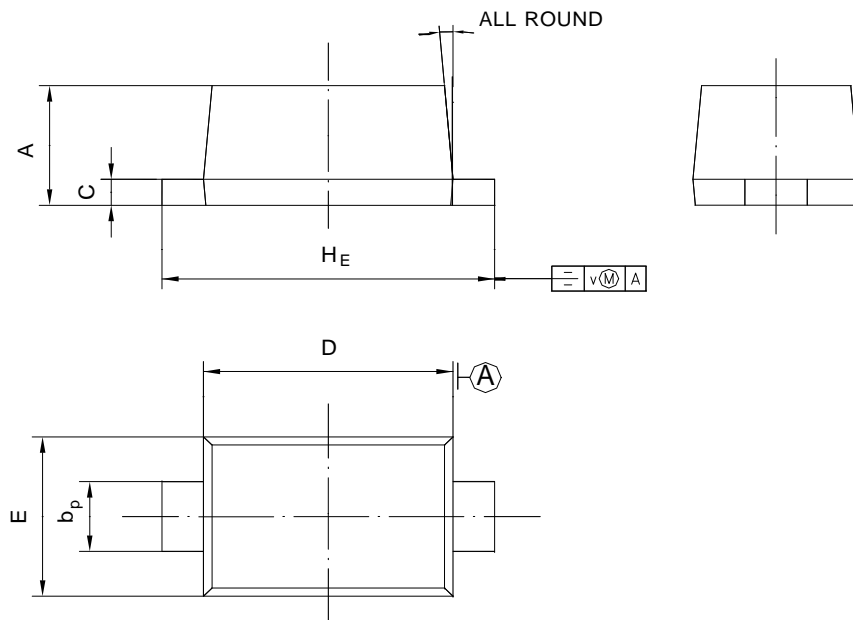
| Parameter   | Symbol      | Min. | Max. | Unit |
|---|-------------|------|------|------|
| Reverse Breakdown Voltage<br>at $I_R = 100\ \mu\text{A}$  | $V_{(BR)R}$ | 120  | -    | V    |
|   |             | 200  | -    |      |
|   |             | 250  | -    |      |
| Reverse Current<br>at $V_R = 100\ \text{V}$<br>at $V_R = 150\ \text{V}$<br>at $V_R = 200\ \text{V}$ | $I_R$       | -    | 100  | nA   |
|   |             | -    | 100  |      |
|   |             | -    | 100  |      |
| Forward Voltage<br>at $I_F = 100\ \text{mA}$<br>at $I_F = 200\ \text{mA}$                           | $V_F$       | -    | 1    | V    |
|   |             | -    | 1.25 |      |
| Total Capacitance<br>at $V_R = 0, f = 1\ \text{MHz}$  | $C_T$       | -    | 5    | pF   |
| Reverse Recovery Time<br>at $I_F = I_R = 30\ \text{mA}, I_{RR} = 0.1 \times I_R, R_L = 100\ \Omega$ | $t_{rr}$    | -    | 50   | ns   |



## PACKAGE OUTLINE

Plastic surface mounted package; 2 leads

SOD-523



| UNIT | A            | b <sub>p</sub> | C              | D            | E            | H <sub>E</sub> | V   |    |
|------|--------------|----------------|----------------|--------------|--------------|----------------|-----|----|
| mm   | 0.70<br>0.60 | 0.4<br>0.3     | 0.135<br>0.100 | 1.25<br>1.15 | 0.85<br>0.75 | 1.7<br>1.5     | 0.1 | 5° |

## X-ON Electronics

Largest Supplier of Electrical and Electronic Components

*Click to view similar products for [Diodes - General Purpose, Power, Switching category](#):*

*Click to view products by [Shikues manufacturer](#):*

Other Similar products are found below :

[MCL4151-TR3](#) [MMBD3004S-13-F](#) [RD0306T-H](#) [RD0506LS-SB-1H](#) [RGP30G-E373](#) [DSE010-TR-E](#) [BAQ333-TR](#) [BAQ335-TR](#) [BAQ33-GS18](#) [BAS1602VH6327XT](#) [BAV17-TR](#) [BAV19-TR](#) [BAV301-TR](#) [BAW27-TAP](#) [HSC285TRF-E](#) [NSVBAV23CLT1G](#) [NTE525](#) [1SS181-TP](#) [1SS184-TP](#) [1SS193,LF](#) [1SS193-TP](#) [1SS400CST2RA](#) [SBAV99LT3G](#) [SDAA13](#) [LL4448-GS18](#) [SHN2D02FUTW1T1G](#) [LS4150GS18](#) [LS4151GS08](#) [SMMD7000LT3G](#) [FC903-TR-E](#) [1N4449](#) [1N4934-E3/73](#) [1SS226-TP](#) [APT100DL60HJ](#) [RFUH20TB3S](#) [RGP30G-E354](#) [RGP30M-E3/73](#) [D291S45T](#) [MCL4151-TR](#) [BAS 16-02V H6327](#) [BAS 21U E6327](#) [BAS 28 E6327](#) [BAS33-TAP](#) [BAS 70-02V H6327](#) [BAV300-TR](#) [BAV303-TR3](#) [BAW27-TR](#) [BAW56DWQ-7-F](#) [BAW56M3T5G](#) [BAW75-TAP](#)